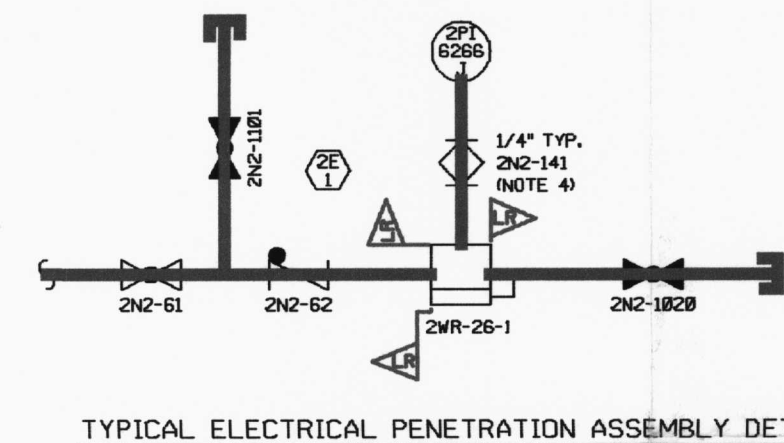


PENETRATION							
PENETRATION NUMBER	WIRE RUN	SUPPLY ISOLATION	SUPPLY CHECK VENT VALVES	SUPPLY CHECK	VENT	PRESSURE INDICATOR	INDICATOR ISOLATION
UPPER SOUTH ELECTRICAL PENETRATION ROOM							
2E-1	2WR-26-1	2N2-61	2N2-110L	2N2-62	2N2-182B	2P1-6265J	2N2-141
2E-4	2WR-42-1	2N2-43	2N2-110R	2N2-44	2N2-181L	2P1-6265A	2N2-132
2E-5	2WR-43-3	2N2-45	2N2-110S	2N2-46	2N2-181R	2P1-6265B	2N2-133
2E-6	2WR-28-1	2N2-47	2N2-110T	2N2-48	2N2-181S	2P1-6265C	2N2-134
2E-7	2WR-25-3	2N2-49	2N2-113A	2N2-184	2N2-181A	2P1-6265D	2N2-135
2E-8	2WR-25-5	2N2-51	2N2-110B	2N2-52	2N2-181S	2P1-6265E	2N2-136
2E-9	2WR-27-1	2N2-53	2N2-110T	2N2-54	2N2-181B	2P1-6265F	2N2-137
2E-10	2WR-44-1	2N2-55	2N2-114B	2N2-185	2N2-181T	2P1-6265G	2N2-138
2E-11	2WR-41-1	2N2-57	2N2-114L	2N2-186	2N2-181B	2P1-6265H	2N2-139
2E-14	2WR-26-7	2N2-59	2N2-111B	2N2-60	2N2-181B	2P1-6265I	2N2-140
LOWER SOUTH ELECTRICAL PENETRATION ROOM							
2E-22	2WR-23-1	2N2-83	2N2-111L	2N2-84	2N2-183B	2P1-6265B	2N2-122
2E-23	2WR-24-1	2N2-85	2N2-111R	2N2-86	2N2-183L	2P1-6265C	2N2-123
2E-24	2WR-23-2	2N2-87	2N2-111S	2N2-88	2N2-183R	2P1-6265D	2N2-124
2E-25	2WR-26-3	2N2-89	2N2-114R	2N2-187	2N2-183S	2P1-6265E	2N2-125
2E-27	2WR-21-1	2N2-81	2N2-111S	2N2-82	2N2-182S	2P1-6265A	2N2-121
2E-28	2WR-28-1	2N2-97	2N2-114S	2N2-188	2N2-183T	2P1-6265I	2N2-129
2E-32	2WR-21-3	2N2-91	2N2-111T	2N2-92	2N2-183A	2P1-6265F	2N2-126
2E-33	2WR-42-3	2N2-101	2N2-111B	2N2-182	2N2-183S	2P1-6265K	2N2-131
2E-34	2WR-43-1	2N2-93	2N2-111S	2N2-194	2N2-183S	2P1-6265G	2N2-127
2E-35	2WR-43-5	2N2-95	2N2-114A	2N2-191	2N2-183B	2P1-6265H	2N2-128
2E-36	2WR-27-3	2N2-99	2N2-112L	2N2-198	2N2-183B	2P1-6265J	2N2-130
UPPER NORTH ELECTRICAL PENETRATION ROOM							
2E-41	2WR-25-2	2N2-24	2N2-112R	2N2-25	2N2-180R	2P1-6265A	2N2-184
2E-42	2WR-43-2	2N2-26	2N2-112S	2N2-27	2N2-180S	2P1-6265B	2N2-185
2E-43	2WR-42-2	2N2-28	2N2-112A	2N2-29	2N2-180A	2P1-6265C	2N2-186
2E-44	2WR-41-2	2N2-30	2N2-114S	2N2-198	2N2-180S	2P1-6265D	2N2-187
2E-45	2WR-26-2	2N2-32	2N2-112B	2N2-33	2N2-180B	2P1-6265E	2N2-188
2E-50	2WR-25-6	2N2-48	2N2-114B	2N2-191	2N2-181B	2P1-6265I	2N2-192
2E-51	2WR-25-4	2N2-38	2N2-112B	2N2-39	2N2-180B	2P1-6265H	2N2-191
2E-53	2WR-40-2	2N2-36	2N2-112S	2N2-37	2N2-180B	2P1-6265G	2N2-189
2E-54	2WR-27-2	2N2-34	2N2-113B	2N2-35	2N2-180T	2P1-6265F	2N2-189
LOWER NORTH ELECTRICAL PENETRATION ROOM							
2E-55	2WR-21-4	2N2-64	2N2-113L	2N2-65	2N2-182L	2P1-6267A	2N2-113
2E-59	2WR-22-2	2N2-66	2N2-113R	2N2-67	2N2-182R	2P1-6267B	2N2-114
2E-60	2WR-22-1	2N2-68	2N2-113S	2N2-69	2N2-182S	2P1-6267C	2N2-115
2E-61	2WR-26-4	2N2-70	2N2-113A	2N2-71	2N2-182A	2P1-6267D	2N2-116
2E-63	2WR-21-2	2N2-72	2N2-113S	2N2-73	2N2-182S	2P1-6267E	2N2-117
2E-66	2WR-43-4	2N2-78	2N2-113B	2N2-79	2N2-182B	2P1-6267H	2N2-120
2E-67	2WR-42-4	2N2-76	2N2-114T	2N2-192	2N2-182T	2P1-6267G	2N2-119
2E-71	2WR-27-4	2N2-74	2N2-113B	2N2-75	2N2-182B	2P1-6267F	2N2-118



- NOTES:
1. DELETED.
 2. LOCAL ALARMS FOR EACH ROOM SHALL HAVE AUDIBLE AND VISUAL ALARM WITH AN ACKNOWLEDGE SWITCH.
 3. ASTERISK (*) DENOTES EQUIP. SUPPLIED BY VENDORS.
 4. VALVE 2N2-115 IS A 1/4\"/>
 5. PENETRATION NO. 2256-BB30S
 6. PENETRATION NO. 2137-BB29B
 7. PENETRATION NO. 2111-BB17

LEGEND	
LINE COLOR	SYSTEM/AMR REPORT
	CONTAINMENT PENETRATIONS/02-R-2005-B6
	LICENSE RENEWAL BOUNDARY
ARKANSAS NUCLEAR ONE	
UNIT 2	
RUSSELLVILLE, ARKANSAS	
PIPING & INSTRUMENT DIAGRAM	
ELECTRICAL PENETRATION NITROGEN	
PRESSURIZATION SYSTEM	
DRAWING NO.	SHEET
M-2239	2
REVISION	0

2 BASED ON M-2239 SH 2 REV 141