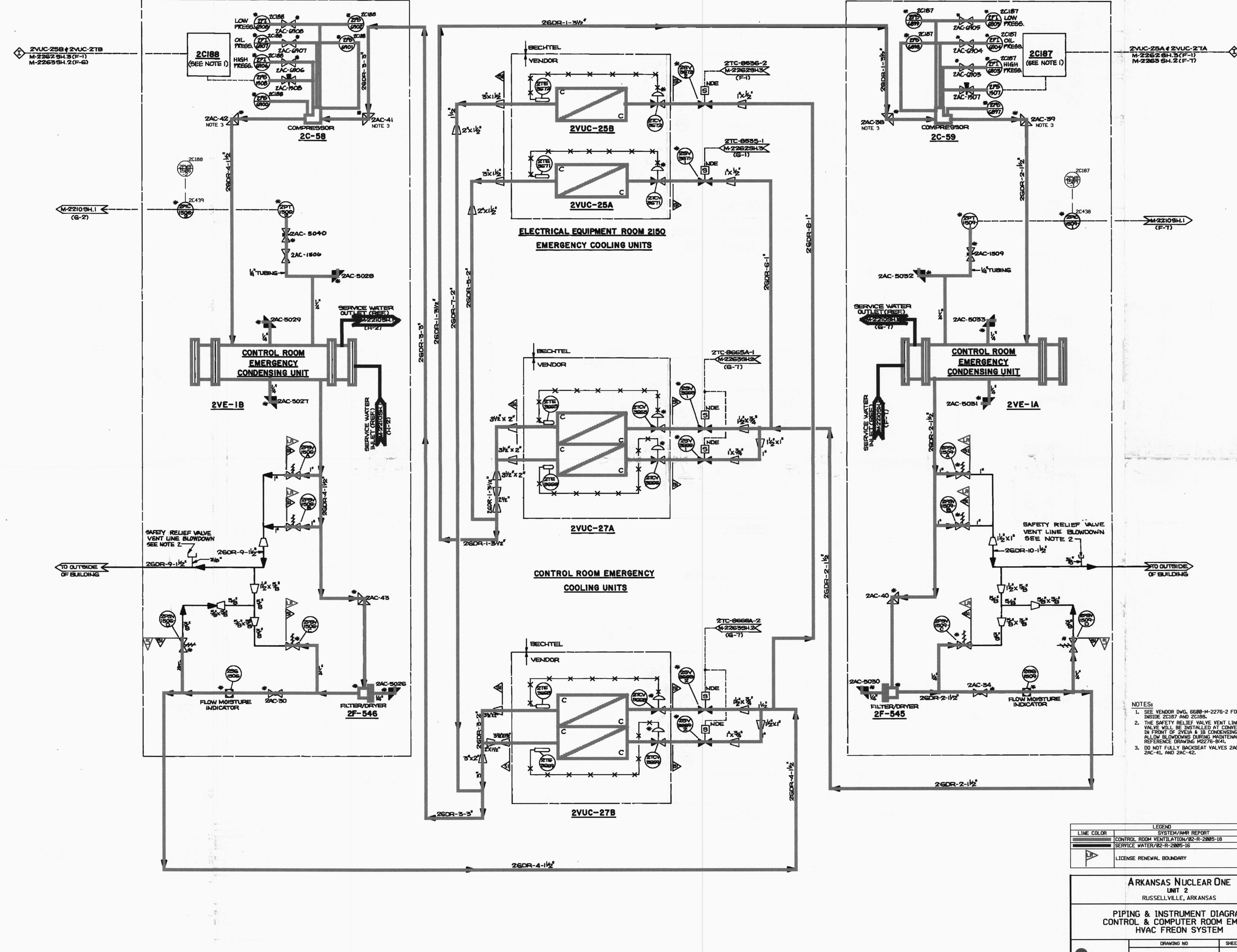


8 7 6 5 4 3 2 1

H
G
F
E
D
C
B
A

8 7 6 5 4 3 2 1



- NOTES:
1. SEE VENDOR DWG. 6688-M-2276-2 FOR INSTRUMENTS INSIDE 2C187 AND 2C188.
 2. THE SAFETY RELIEF VALVE VENT LINE BLOWDOWN VALVE WILL BE INSTALLED AT CONVENIENT LOCATION IN FRONT OF 2VE-1A & 1B CONDENSING UNIT SKID TO ALLOW BLOWDOWNS DURING MAINTENANCE ACTIVITIES. REFERENCE DRAWING M-2221 SH-4.
 3. DO NOT FULLY BACKSEAT VALVES 2AC-38, 2AC-39, 2AC-41, AND 2AC-42.

LEGEND	
LINE COLOR	SYSTEM/AMR REPORT
	CONTROL ROOM VENTILATION/62-R-2085-18
	SERVICE WATER/62-R-2085-18
	LICENSE RENEWAL BOUNDARY

ARKANSAS NUCLEAR ONE UNIT 2 RUSSELLVILLE, ARKANSAS			
PIPING & INSTRUMENT DIAGRAM CONTROL & COMPUTER ROOM EMERG. HVAC FREON SYSTEM			
DRAWING NO	SHEET	REVISION	
LRA-M-2221	2	0	

D-34