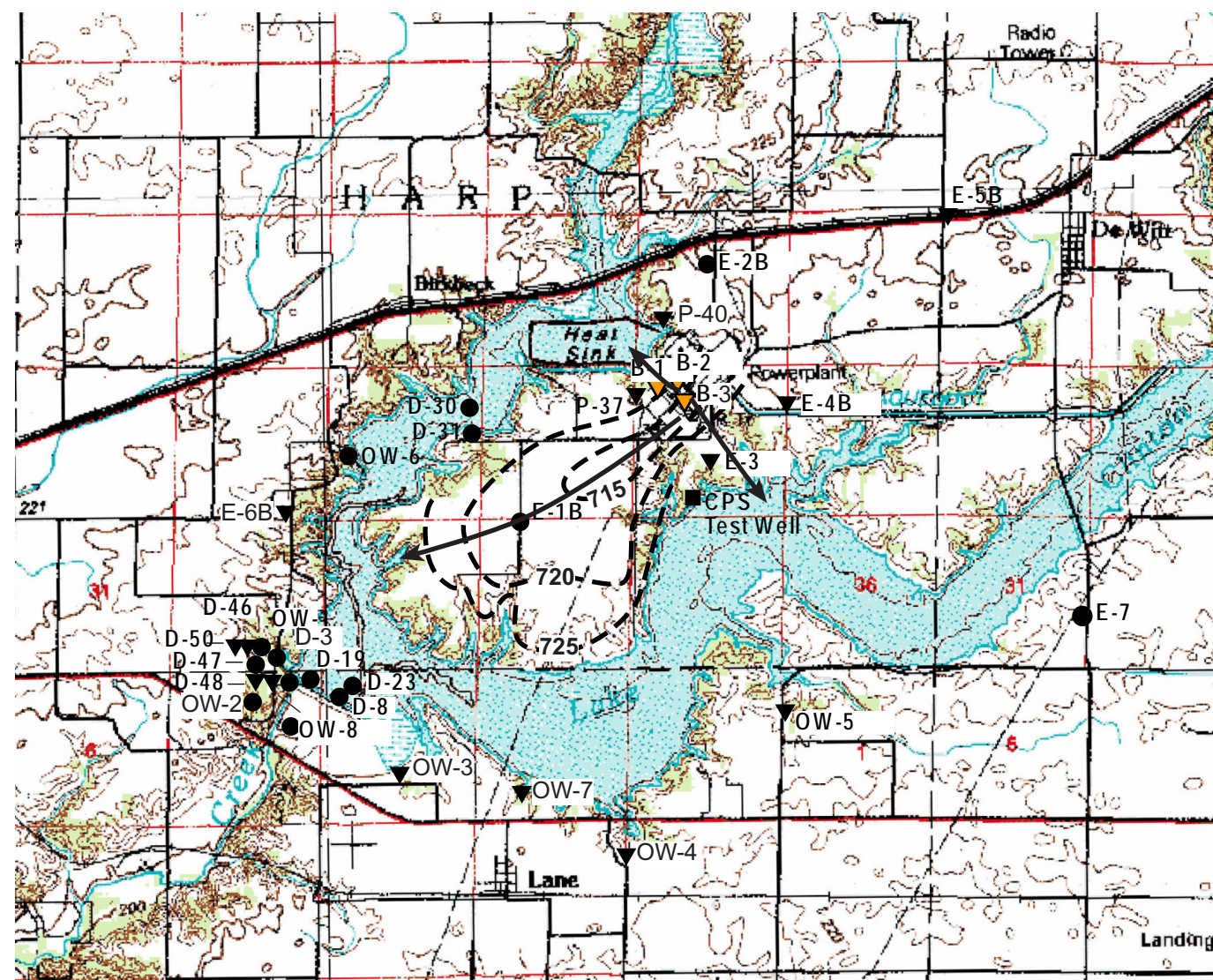


Site Safety Analysis Report for
the EGC Early Site Permit

Figure 2.4-20
Location of Piezometers, CPS
Test Well, and Water Table
in Site Vicinity



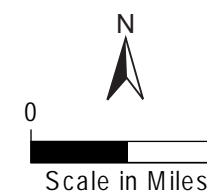
Legend

- CPS Test Well
- ▼ Functional Piezometer (As of 12 - 77)
- Non-Functional Piezometer (As of 12 - 77)
- - - Inferred Water Table Contour, Wisconsin Deposits
- ▼ Piezometer Installed in July/August 2002
- ↖ Flow Line

NOTES

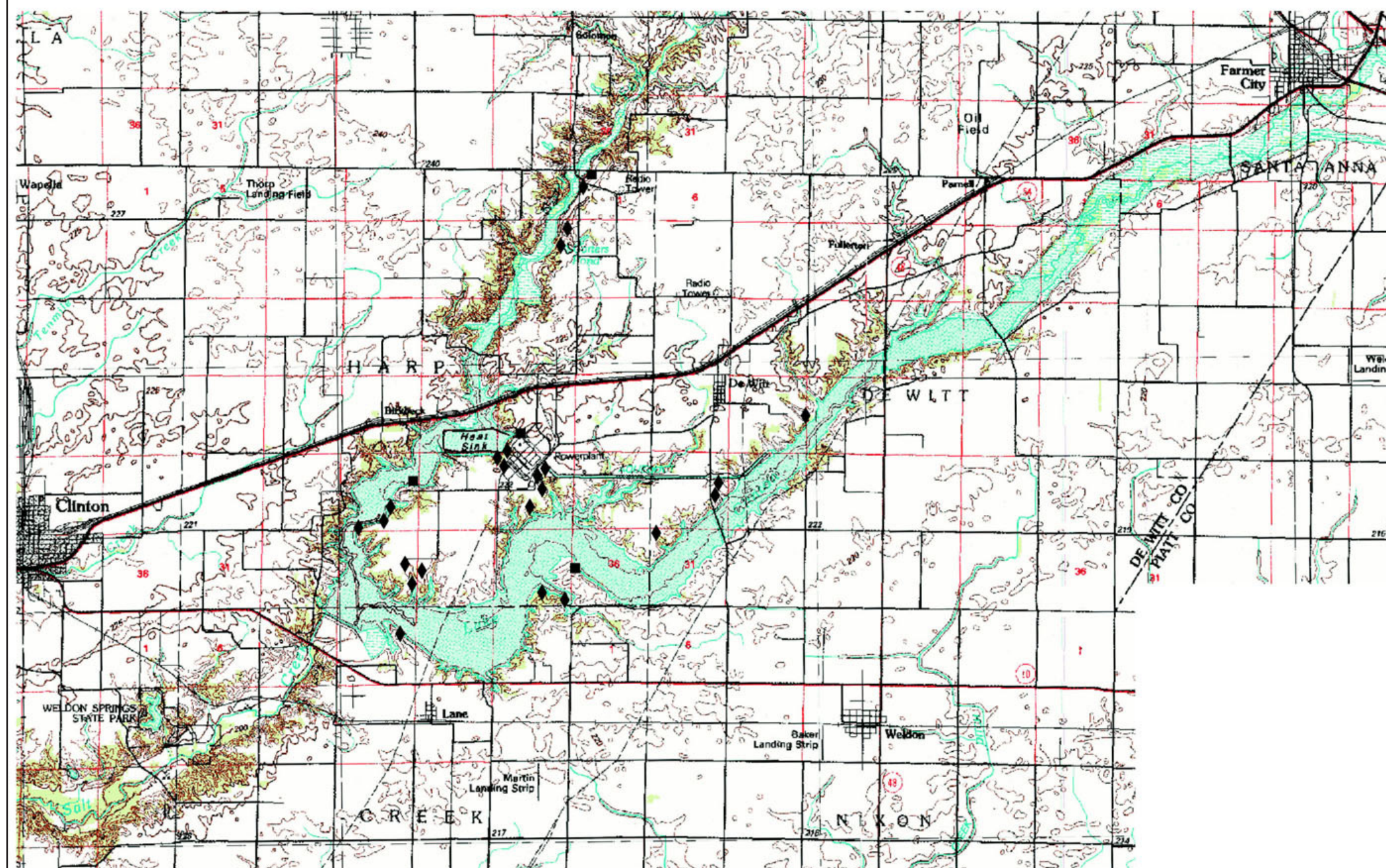
1. Datum is mean sea level
2. Piezometer installation data are listed in Table 2.3-15
3. Base map modified from USGS, 15' Series topographic map: Maroa, Ill., 1957

Data Source:
CPS, 2002



Site Safety Analysis Report for the EGC Early Site Permit

Figure 2.4-21 Springs in the Vicinity of the Site



Legend

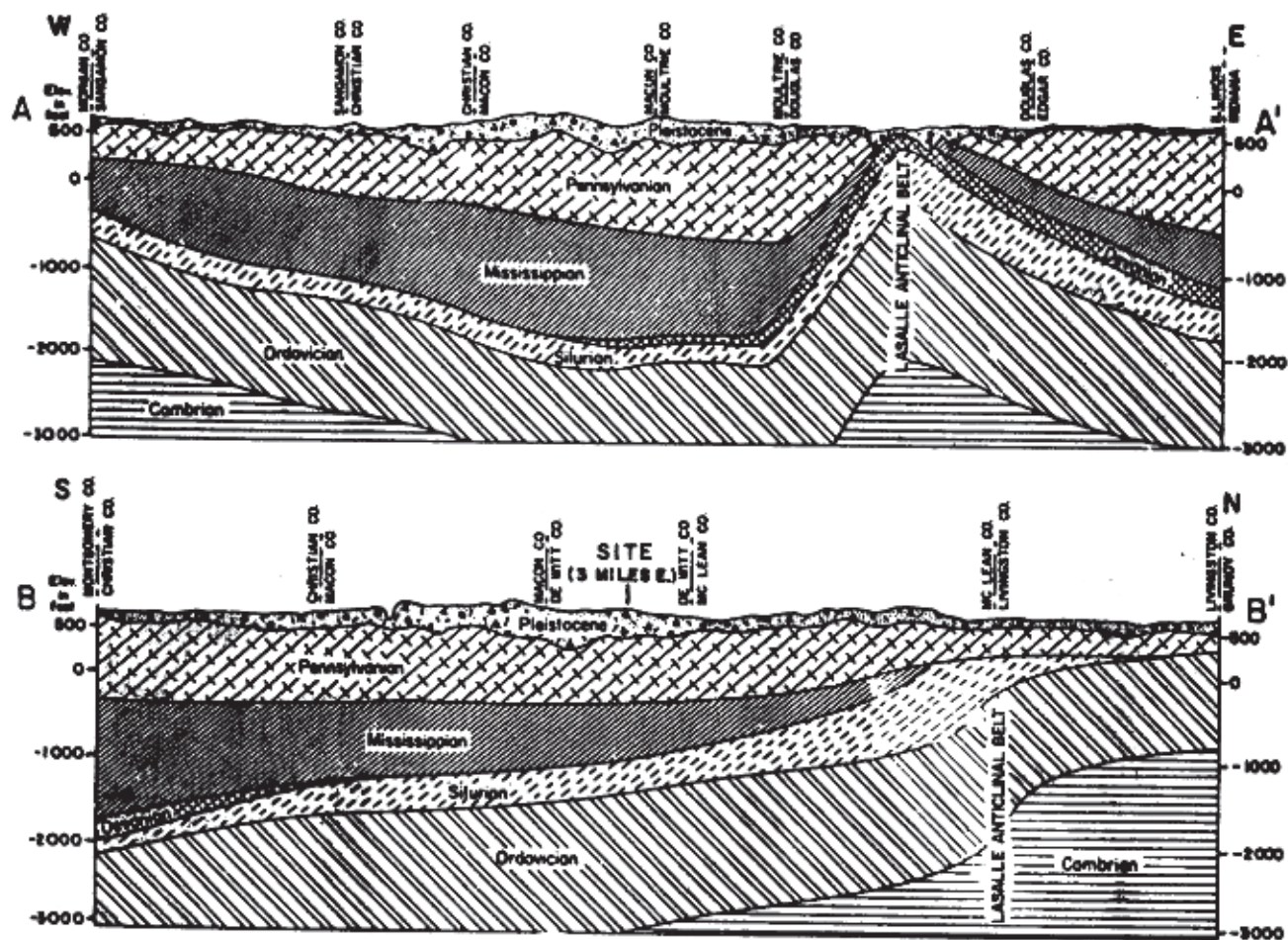
- Observed Spring
- ◆ Described by Farmer

Data Source:
CPS, 2002



N
Not to Scale

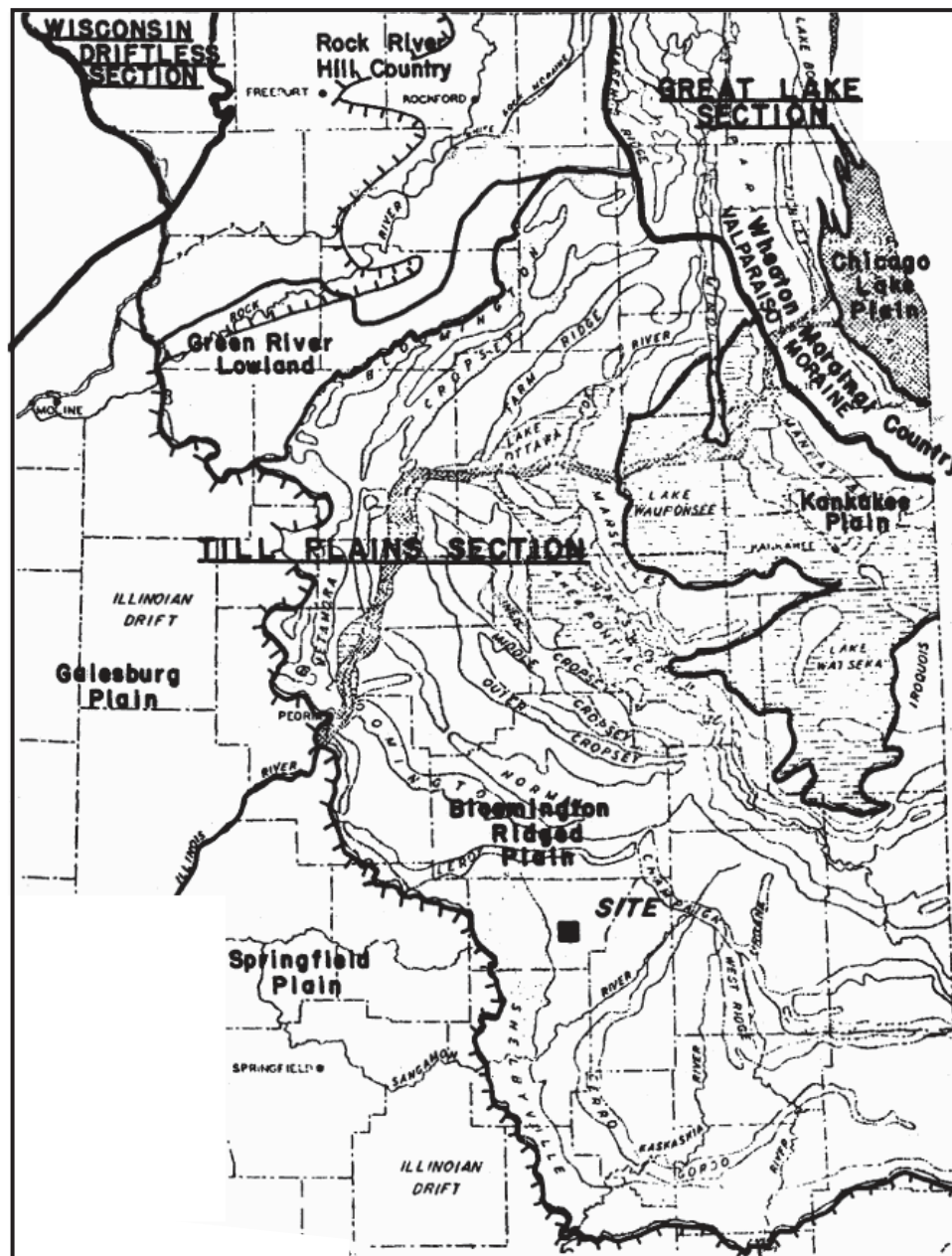
Figure 2.5-1
Regional Geologic
Cross Sections



Notes:
1. Reprinted from: CPS, 2002

SCALE OF MILES
0 10 20 30

Figure 2.5-2
Regional Glacial Map and
Physiographic Divisions



Legend

- Moraines
- Kankakee Torrent Area
- Lake Chicago and Outlet
- Limit of Wisconsin Glaciation in Illinois

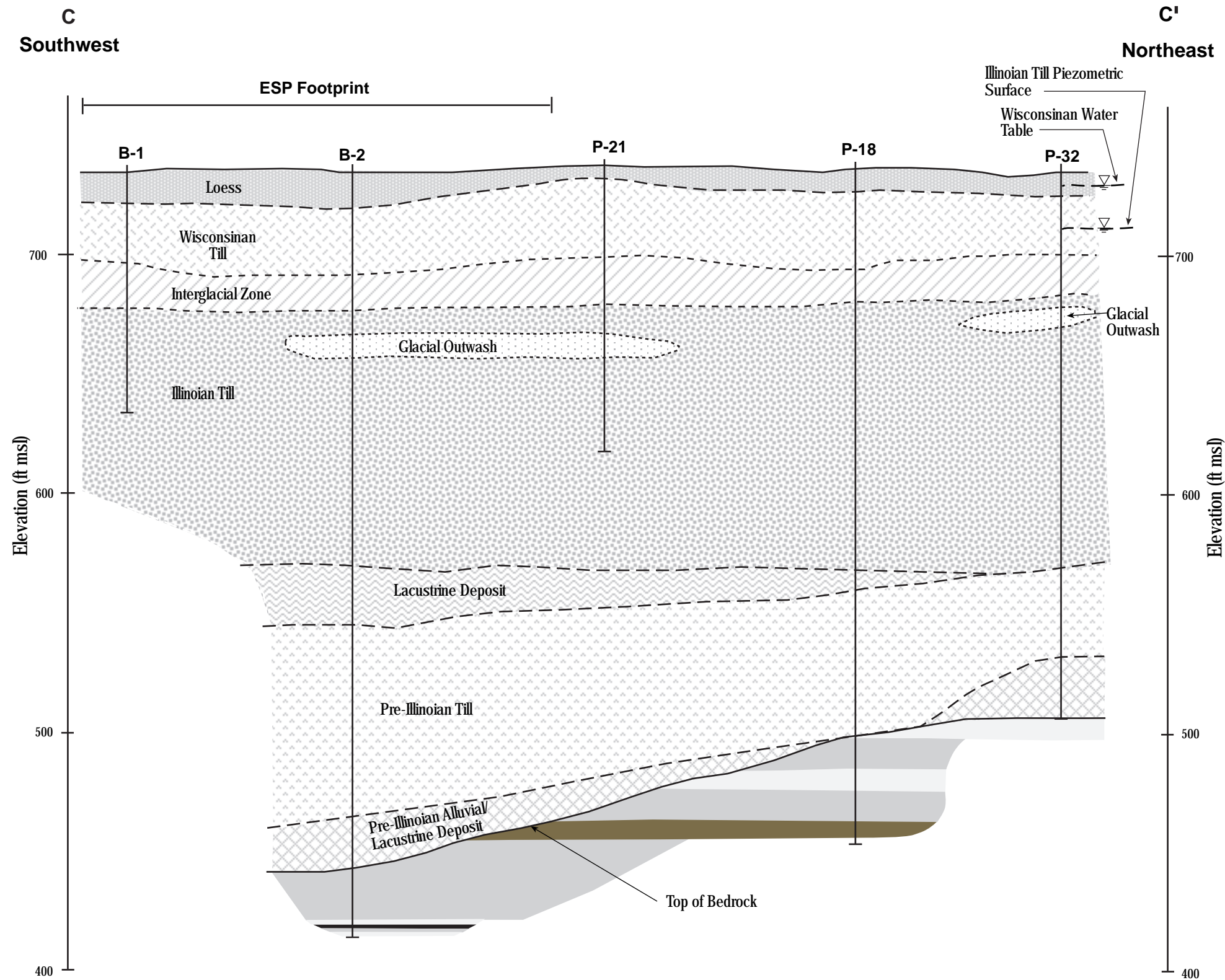
Notes:

1. These physiographic sections and subsections are part of the central lowland physiographic province.
2. The areas shown in white are primarily glacial drift and ground moraine except for the Wisconsin driftless section and parts of the Green River lowland.
3. Reprinted from: CPS, 2002



Site Safety Analysis Report for
the EGC Early Site Permit

Figure 2.5-3
Representative
Soil Cross Section



Legend

Quaternary	Wisconsinan	LOESS - Brown to mottled brown and gray clayey silt or silty clay with trace fine sand; Weathered
	Sangamonian	WISCONSINAN GLACIAL TILL - Brownish-gray to gray clayey silt or silty clay with sand and gravel; Contains irregular and discontinuous lenses of sand and silt throughout (glacial outwash and possibly local lacustrine deposits)
	Illinoian	INTERGLACIAL ZONE - Includes dark gray to gray organic clayey silt or silty clay (colluvial soils), greenish to bluish-gray clayey silt with sand and gravel (reworked Illinoian Glacial Till)
	Yar-Mouthian	ILLINOIAN GLACIAL TILL - Brownish-gray to gray clayey silt with sand and gravel to very sandy silt or silty sand with some clay and gravel; Interbedded outwash deposits in upper horizons GLACIAL OUTWASH - Gray silty sand and sandy silt, interlayered LACUSTRINE DEPOSIT - Brownish-gray to black and gray clayey silt to silt, organic in zones; Includes greenish to bluish-gray clayey silt with sand and gravel (reworked and weathered pre-Illinoian Glacial Till); Assignment to Yarmouthian Glacial Stage is tentative
Pennsylvanian	Kansan	PRE-ILLINOIAN GLACIAL TILL - Grayish-brown to brown silty clay and clayey silt with some sand and gravel; Brown color and relatively high clay content is characteristic; Tentatively assigned to Kansan Glacial Stage on the basis of clay analysis by Illinois State Geological Survey PRE-ILLINOIAN ALLUVIAL & LACUSTRINE DEPOSIT - Consists of grayish-brown, brown, and green clayey silt and silty clay with sand and some gravel (reworked glacial till) and gray to brown clayey silt with organic debris (lacustrine or low energy alluvial deposit); Included as part of the Mahomet bedrock deposit in areas where it is underlain by sandy outwash deposits
		BEDROCK - Interbedded layers of limestone, shale, and siltstone assigned to the McLeansboro Group, Modesto Formation on the basis of spore analysis of the coal encounter in boring B-31
		LIMESTONE - Greenish-gray, gray and brown, fine to coarsely crystalline, silty, thin bedded to massive, numerous shale partings in zones, fossiliferous.
		SHALE - Gray to dark gray shale, carcoraceous to calcareous; clayey in zones, expansive, slickensides; occasional concretion
		SILTSTONE - Light gray siltstone, micaceous, fine sandy, cross-bedded in zones; occasional interbedded layer of silty sandstone
		Coal Seam
B-2 Borehole Number		

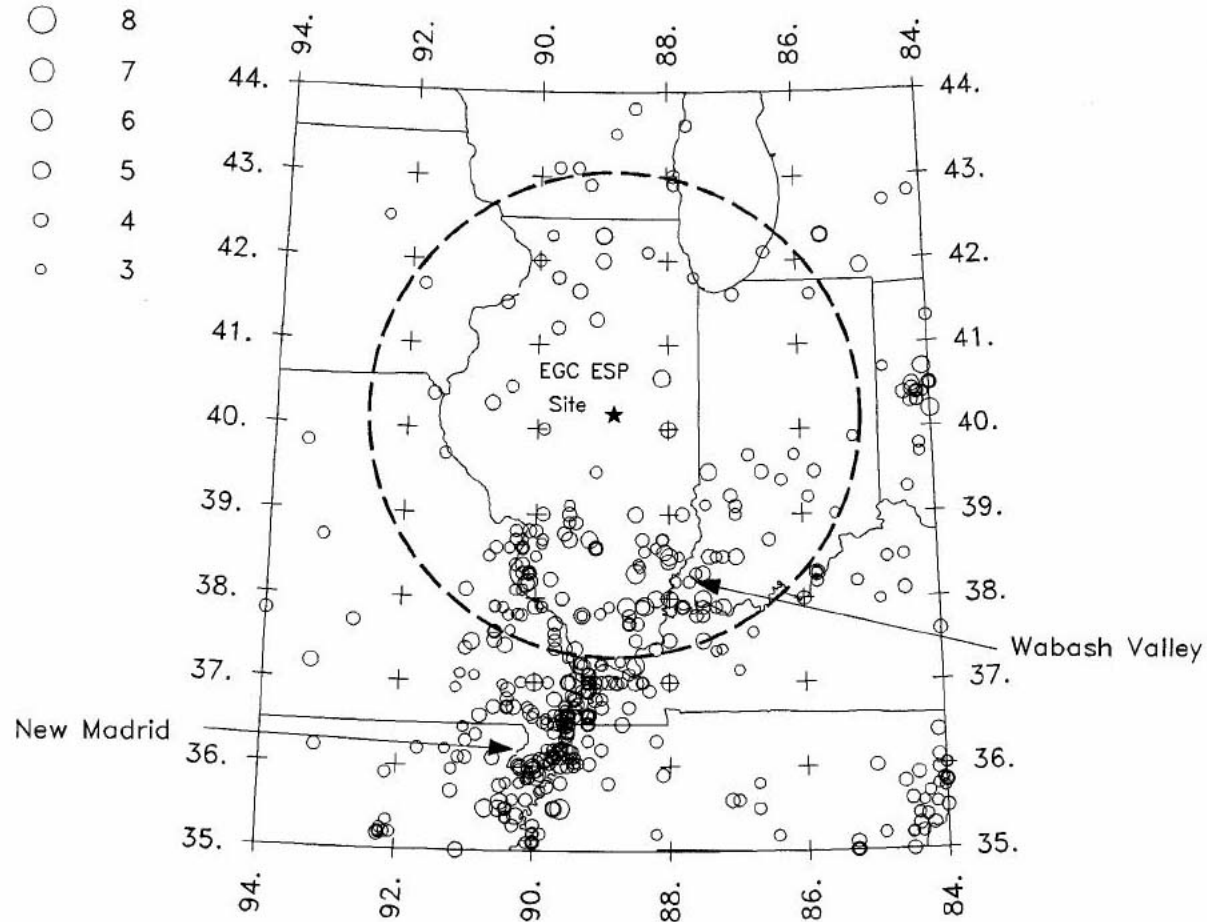
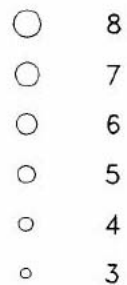
Notes:

1. Elevations refer to the USGS Datum
2. See Figure 3-1 in Appendix A for cross section location

0 200 ft
Approximate Horizontal Scale

Figure 2.5-4
Regional Seismicity

Magnitude



Legend

Not to Scale

Site Safety Analysis Report for the EGC Early Site Permit

**Figure 2.5-5
Comparison of EPRI-SOG
Catalog to Updated Information**

Legend

Notes:

See Section 2.1.3 of Appendix B for additional explanation.

Size of data point indicates estimated magnitude.

Not to Scale

