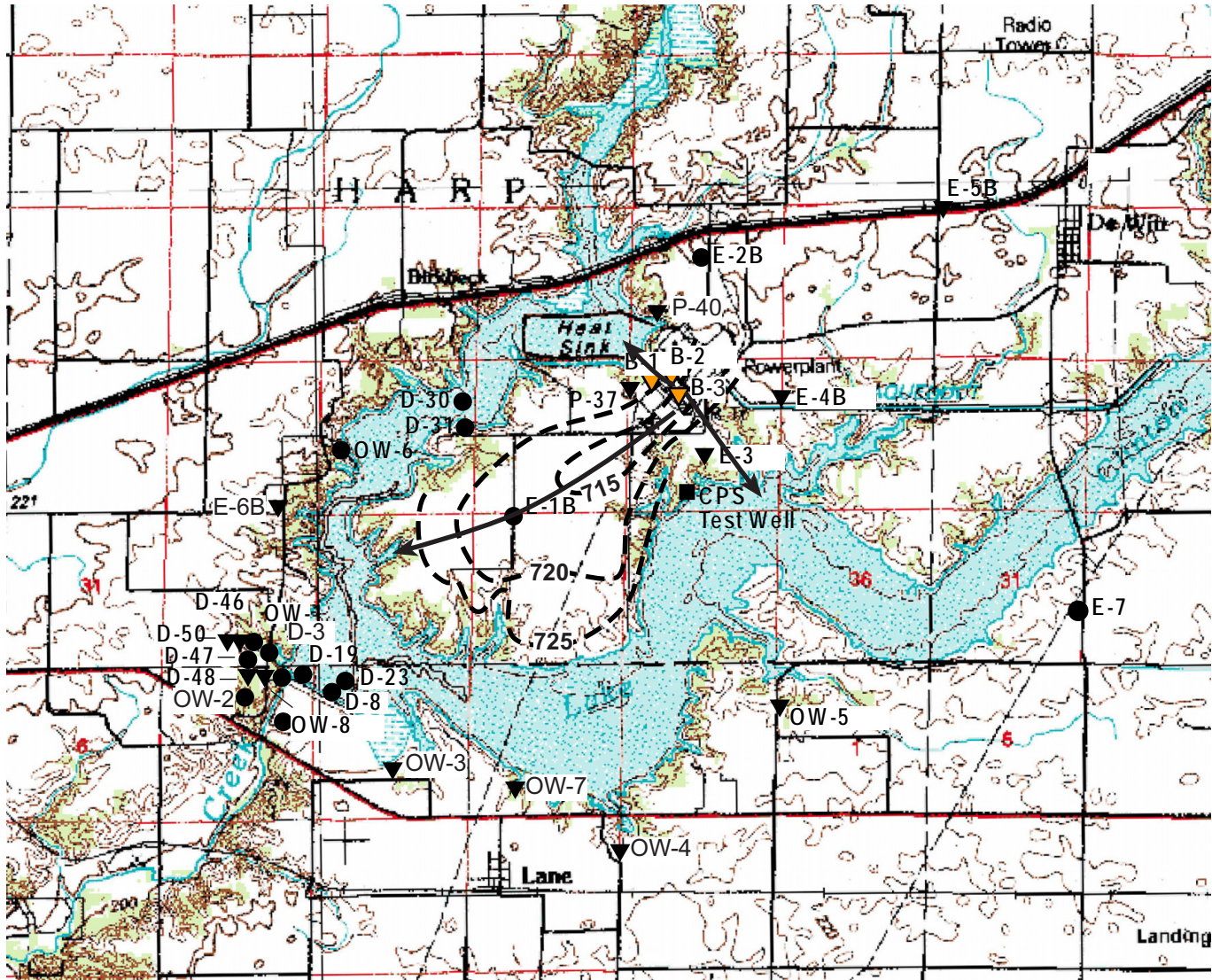


Environmental Report for the EGC Early Site Permit  
**Figure 2.3-16**  
**Location of Piezometers, CPS**  
**Test Well, and Water Table**  
**in Site Vicinity**



**Legend**

- CPS Test Well
- ▼ Functional Piezometer (As of 12 - 77)
- Non-Functional Piezometer (As of 12 - 77)
- - - Inferred Water Table Contour, Wisconsin Deposits
- ▼ Piezometer Installed in July/August 2002
- ↖ Flow Line

**NOTES**

1. Datum is msl.
2. Piezometer installation data are listed in Table 2.3-15.

Data Source:  
CPS, 2002

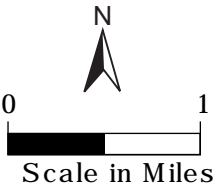
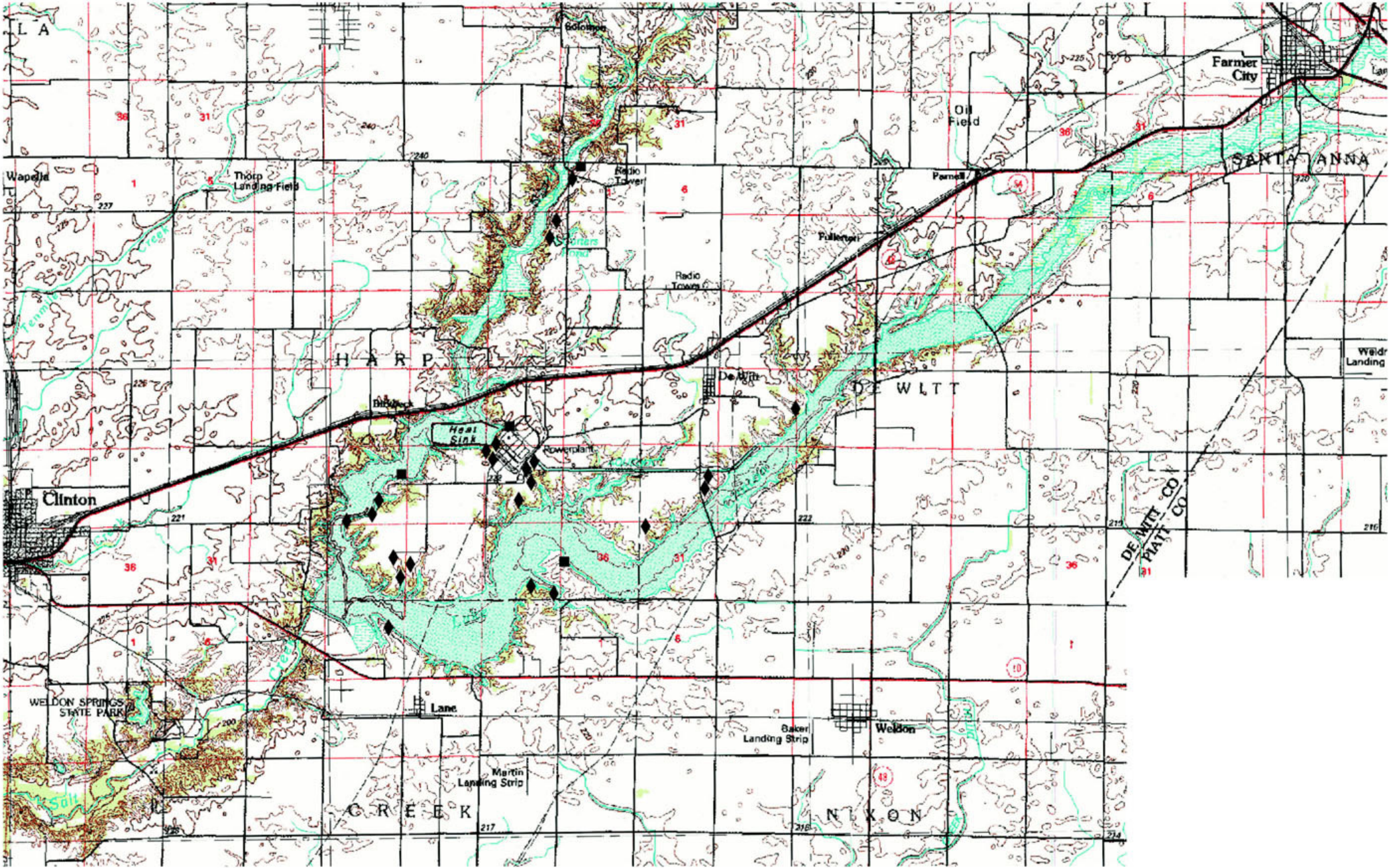




Figure 2.3-17  
Springs in the Vicinity of the Site



Legend

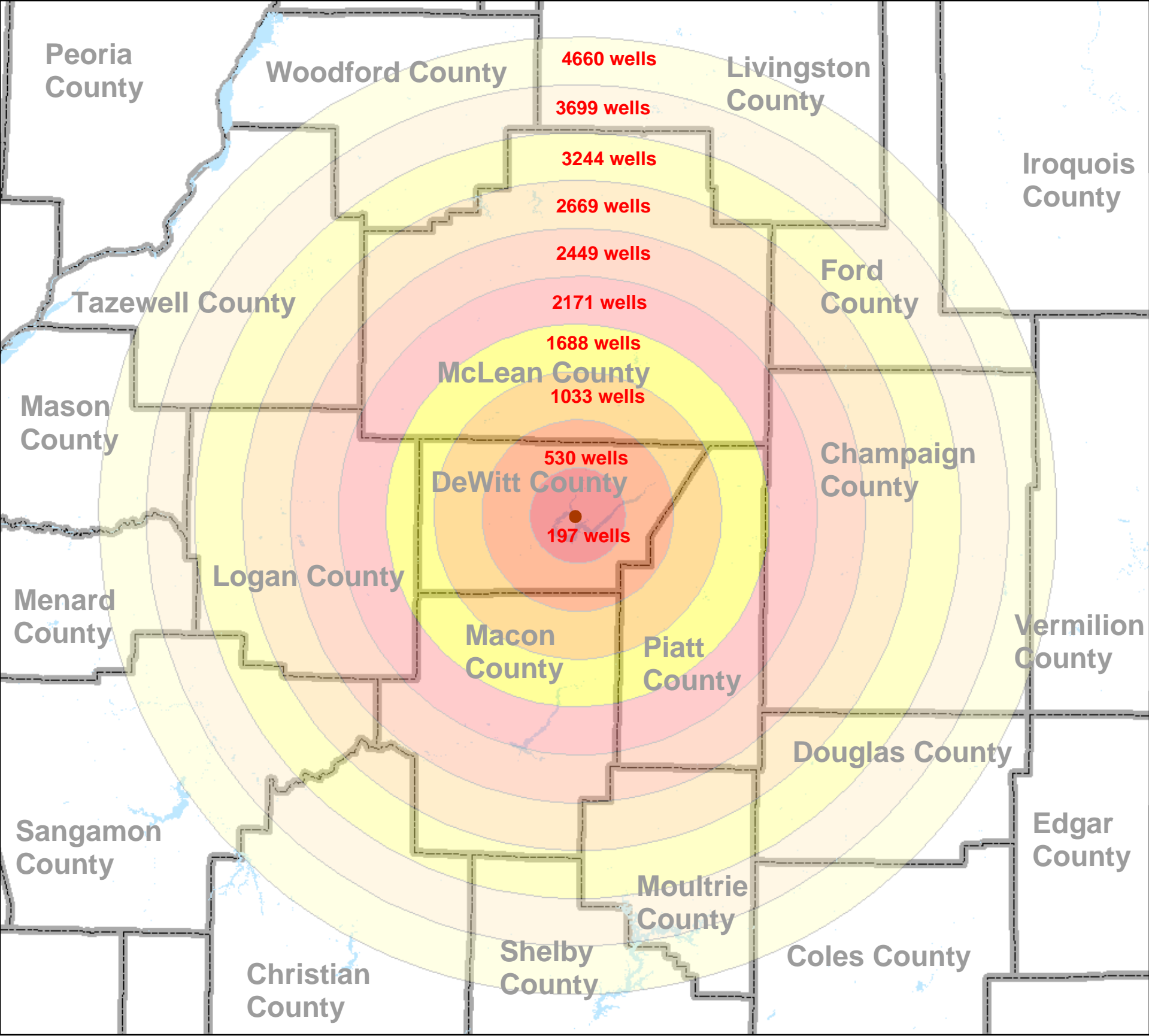
- Observed Spring
- ◆ Described by Farmer

Data Source:  
CPS, 2002





Figure 2.3-18  
Number of Wells  
within a 50-mi Radius of the Site



Legend

- EGC ESP Site
  - Water: Lakes and Rivers
  - County Boundary
- Radial Distance (mi)
- 0 - 5
  - 5 - 10
  - 10 - 15
  - 15 - 20
  - 20 - 25
  - 25 - 30
  - 30 - 35
  - 35 - 40
  - 40 - 45
  - 45 - 50

Data Sources:  
ISGS, 2002  
U.S. Census Bureau, 2000  
U.S. Census Bureau, 2002

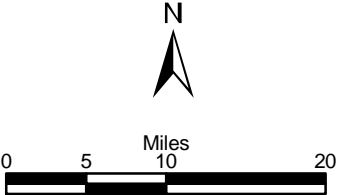
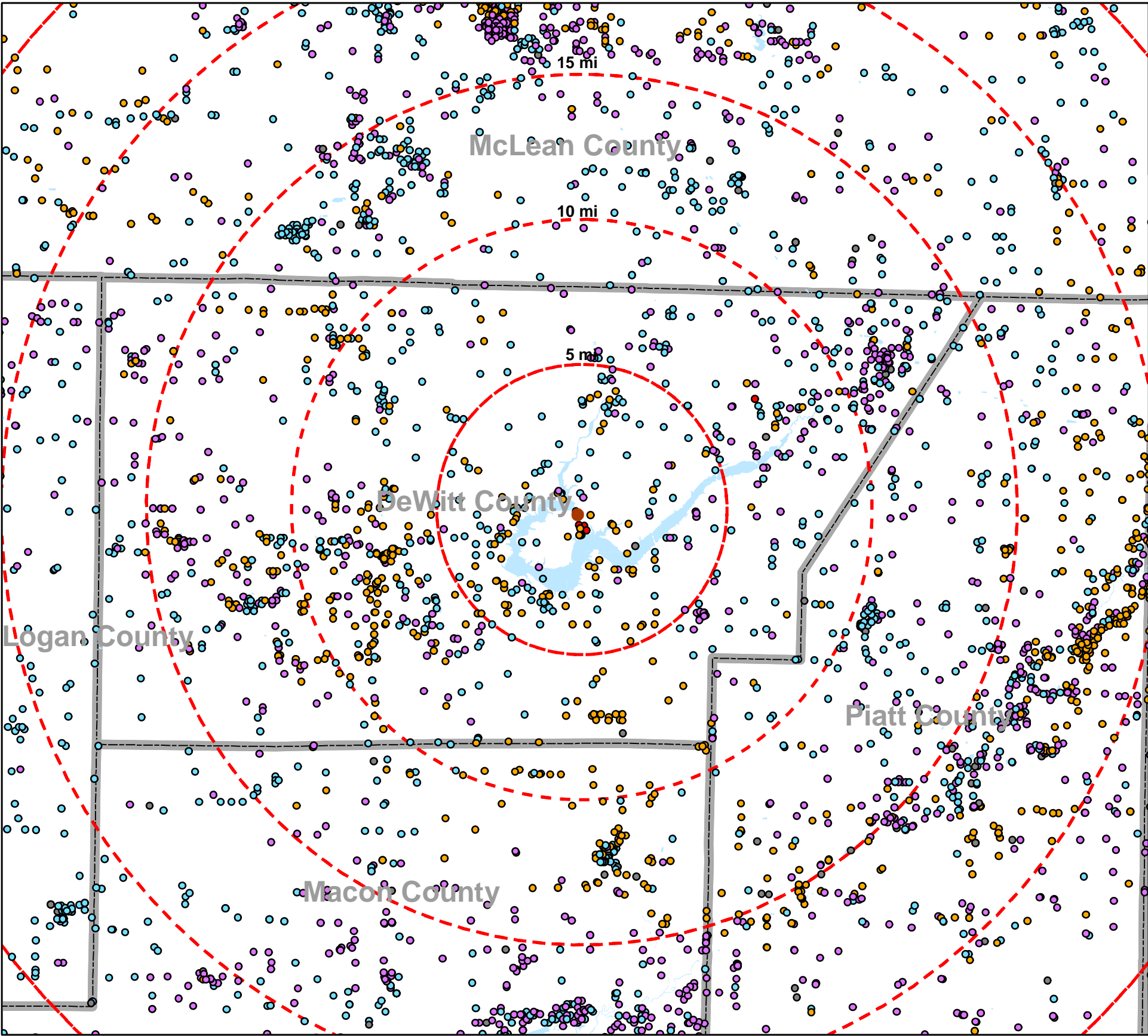


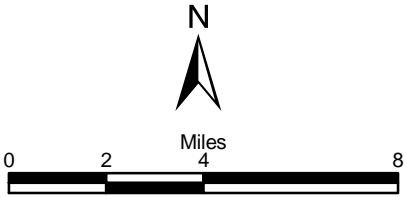
Figure 2.3-19  
Wells Within a  
15-mi Radius of the Site



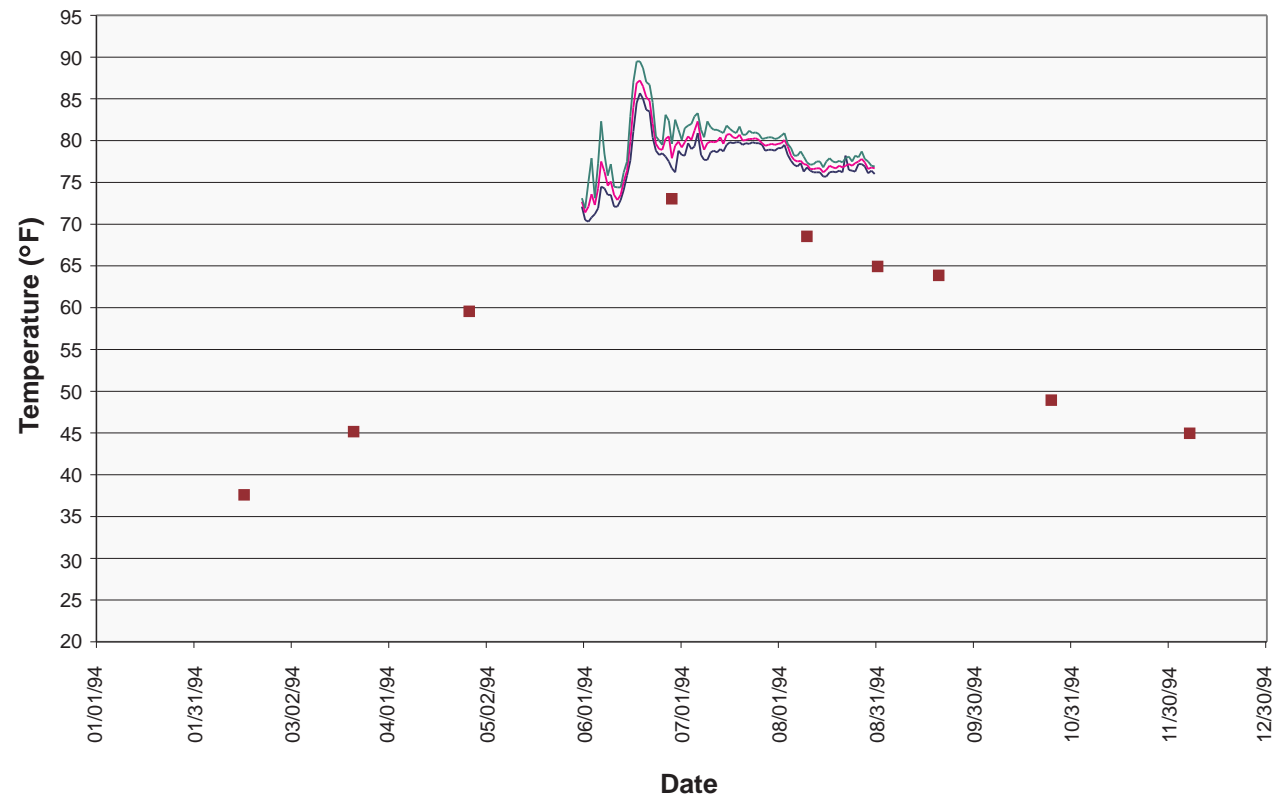
Legend

- EGC ESP Site
  - 5 mi Radius from Site
  - Water: Lakes and Rivers
  - County Boundary
- Well Locations - Total Depth (ft)
- Depth Unknown
  - < 100
  - 100 - 200
  - 200 - 400
  - > 400

Data Sources:  
ISGS, 2002  
U.S. Census Bureau, 2000  
U.S. Census Bureau, 2002



**Figure 2.3-20**  
**Daily Temperatures**  
**in Salt Creek at Site 1.5**  
**Summer 1994**



**Legend**

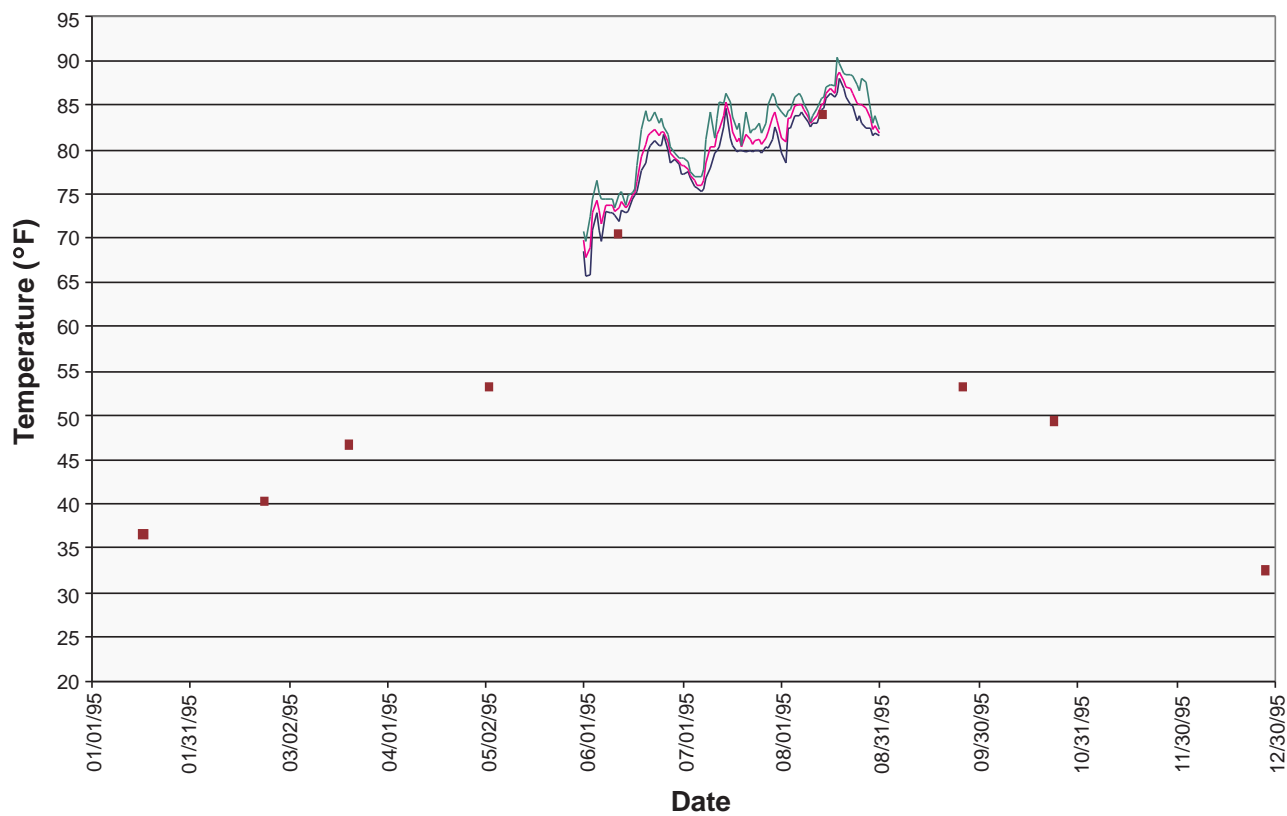
- Minimum Daily Temperature at Site 1.5
- Average Daily Temperature at Site 1.5
- Maximum Daily Temperature at Site 1.5
- Temperature at Rowell

Note:  
Site 1.5 is located 100-ft downstream of the Clinton Lake Dam

Data Source:  
CPS, 1994

Not to Scale

Environmental Report for the EGC Early Site Permit  
**Figure 2.3-21**  
**Daily Temperatures**  
**in Salt Creek at Site 1.5**  
**Summer 1995**



**Legend**

- Minimum Daily Temperature at Site 1.5
- Average Daily Temperature at Site 1.5
- Maximum Daily Temperature at Site 1.5
- Temperature at Rowell

Note:  
 Site 1.5 is located 100-ft downstream of the Clinton Lake Dam

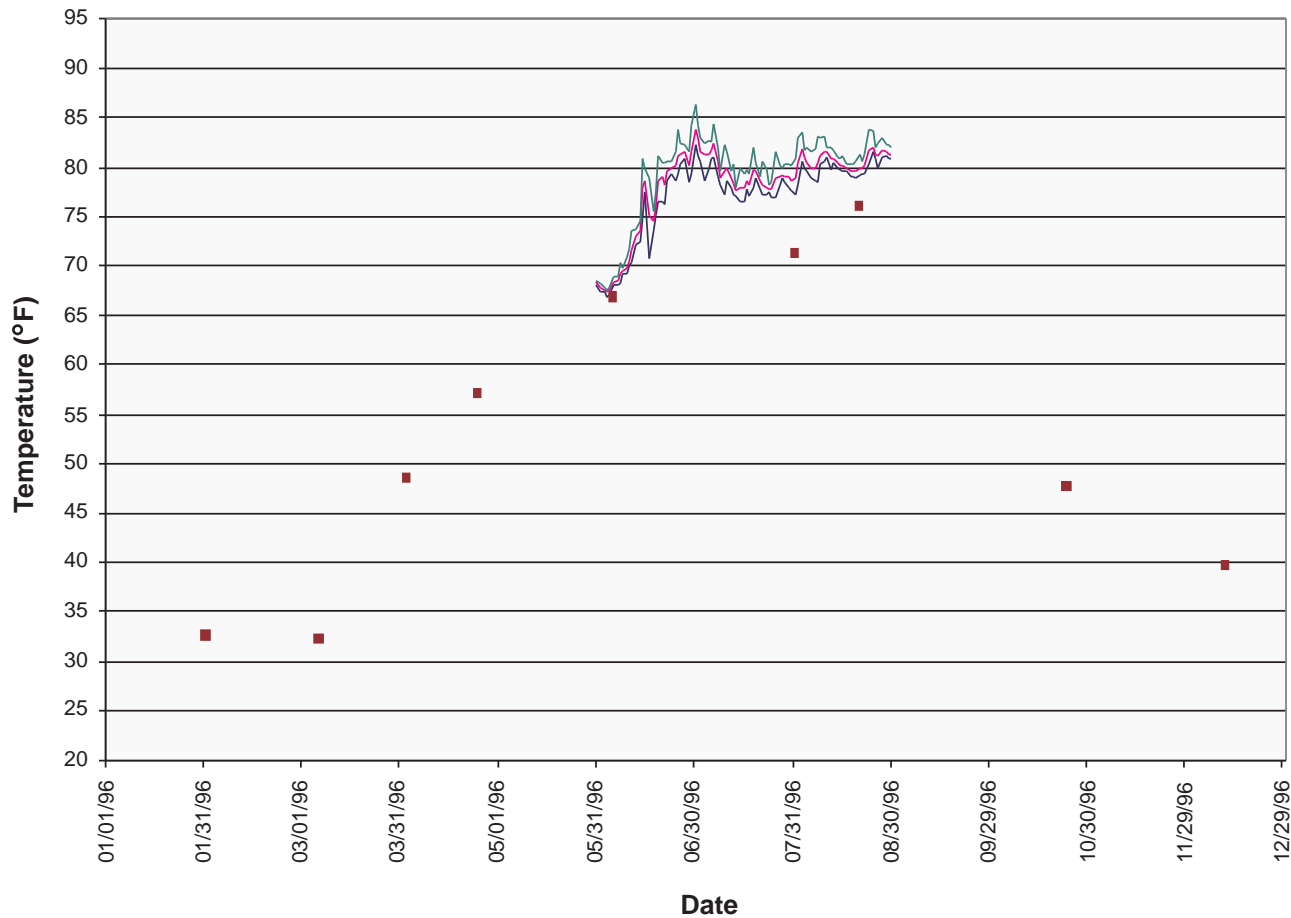
Data Source:  
 CPS, 1995

Not to Scale

Environmental Report for the EGC Early Site Permit

**Figure 2.3-22**

**Daily Temperatures**  
**in Salt Creek at Site 1.5**  
**Summer 1996**



**Legend**

- Minimum Daily Temperature at Site 1.5
- Average Daily Temperature at Site 1.5
- Maximum Daily Temperature at Site 1.5
- Temperature at Rowell

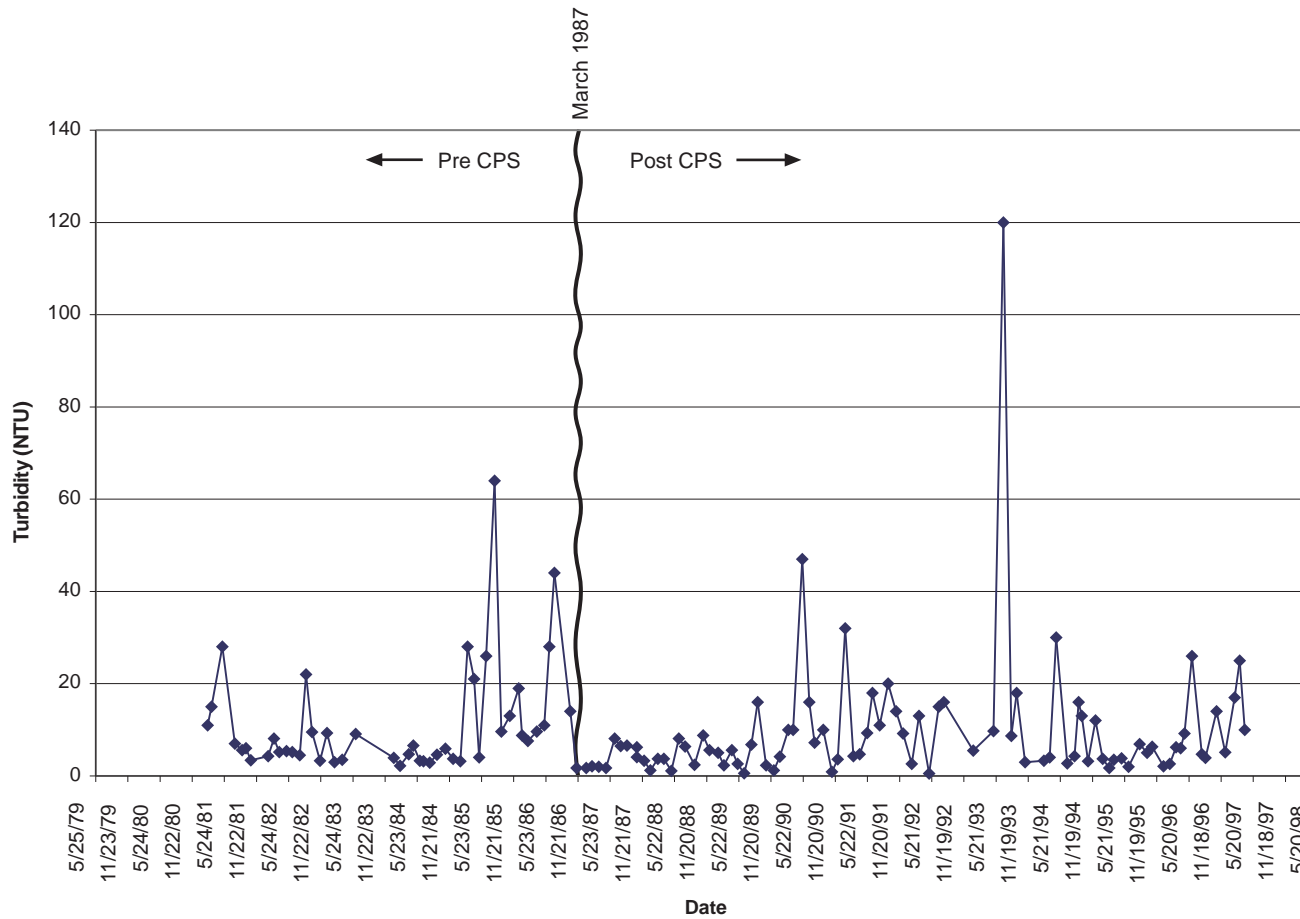
**Note:**

Site 1.5 is located 100-ft downstream of the Clinton Lake Dam

Data Source:  
CPS, 1996

Not to Scale

**Figure 2.3-23**  
**Turbidity Measurements**  
**at Rowell Gauge Station**

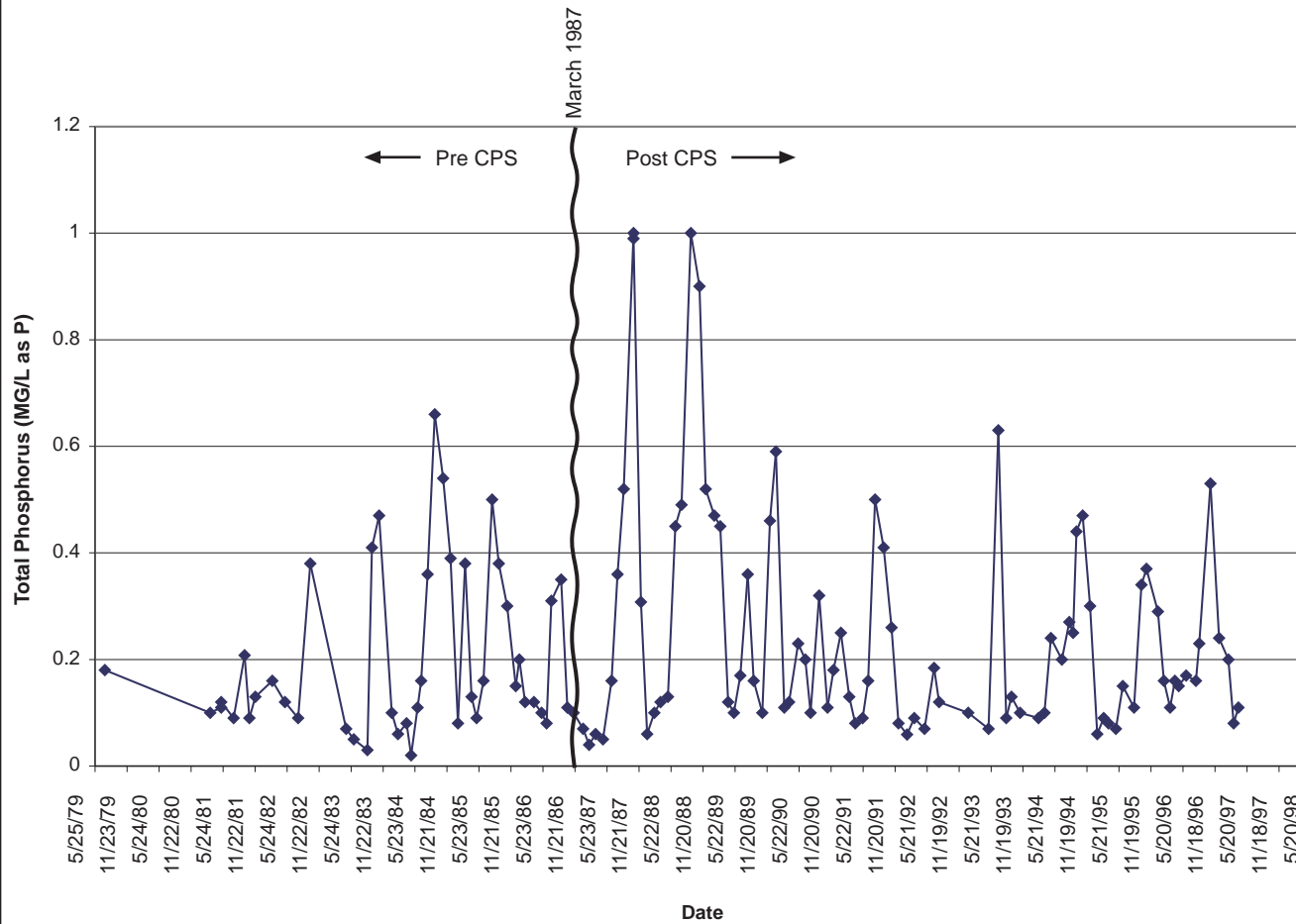


Data Source:  
USGS, 2002

Not to Scale



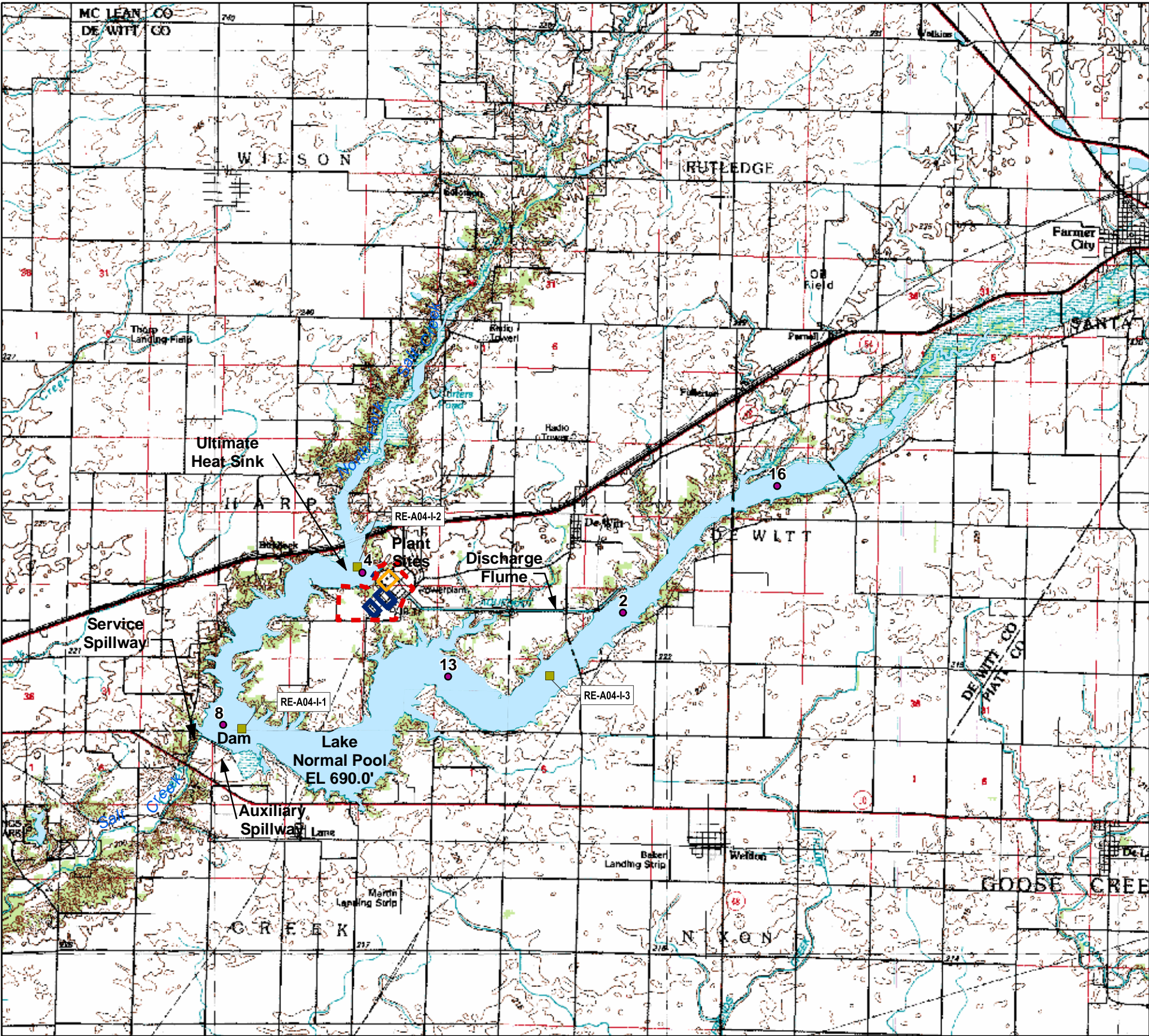
**Figure 2.3-24**  
**Total Phosphorus Concentrations**  
**at Rowell Gauge Station**



Data Source:  
USGS, 2002

Not to Scale

Figure 2.3-25  
Lake Sampling Sites



- Legend**
- Lake Sampling Sites
  - IEPA Monitoring Location
  - CPS Facility
  - ▭ Proposed Areas for EGC ESP Facility Structures
  - ▭ Site Boundary: Fenceline
  - Water: Lakes and Rivers

Data Sources:  
CPS, 1992  
USGS, 1984 and 1989

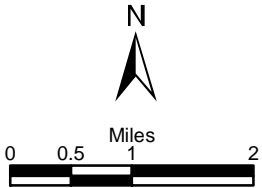
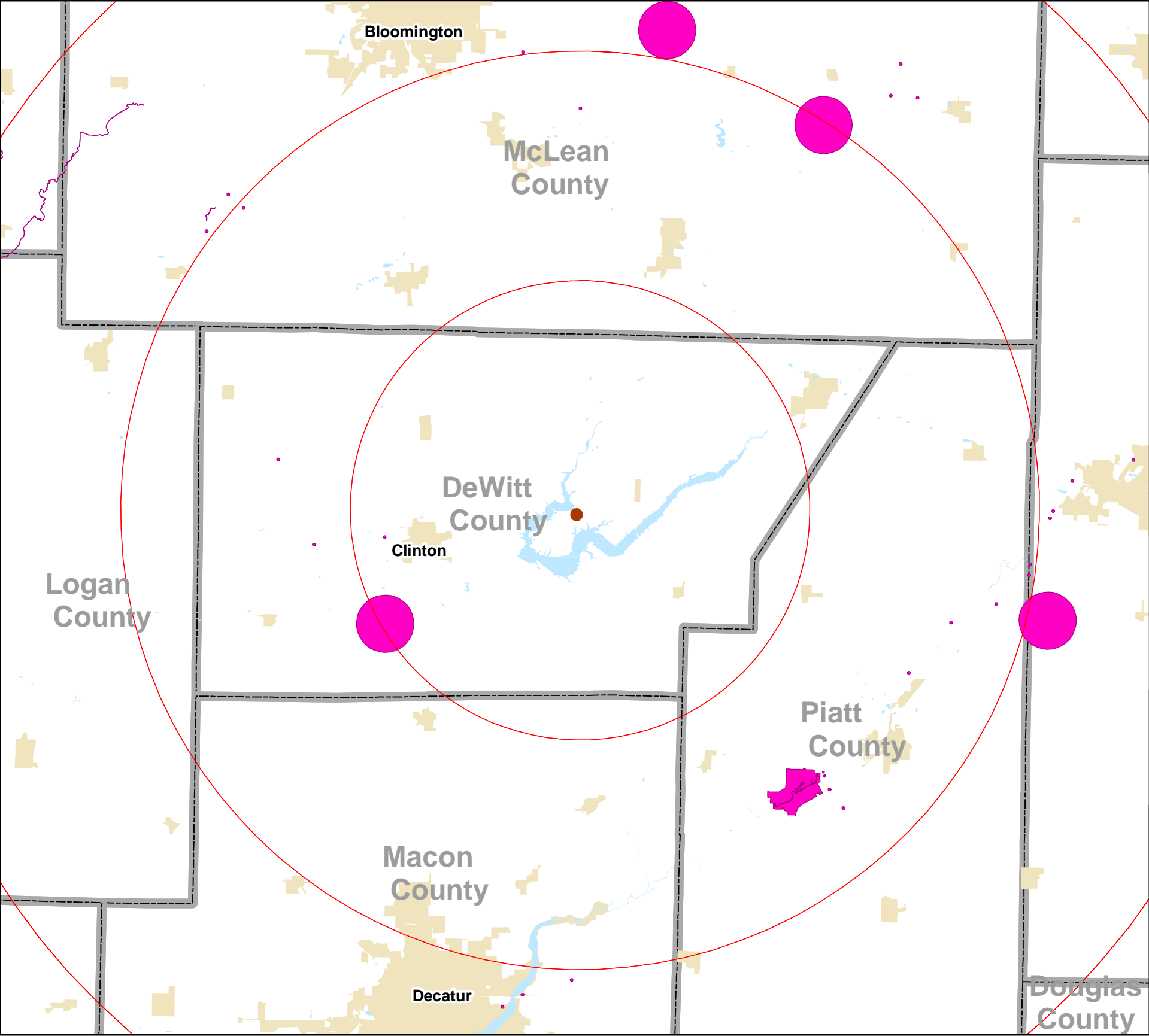


Figure 2.4-1  
Endangered and Threatened Species



Legend

- EGC ESP Site
- Site Buffer: 10-mi Radius
- Endangered and Threatened Species Areas
- Water: Lakes and Rivers
- Incorporated/Designated Places
- County Boundary

Data Sources:  
IDNR, 2002a  
U.S. Census Bureau, 2000

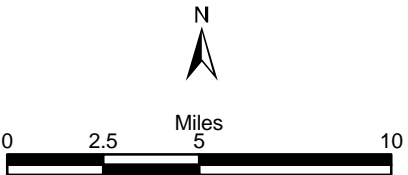
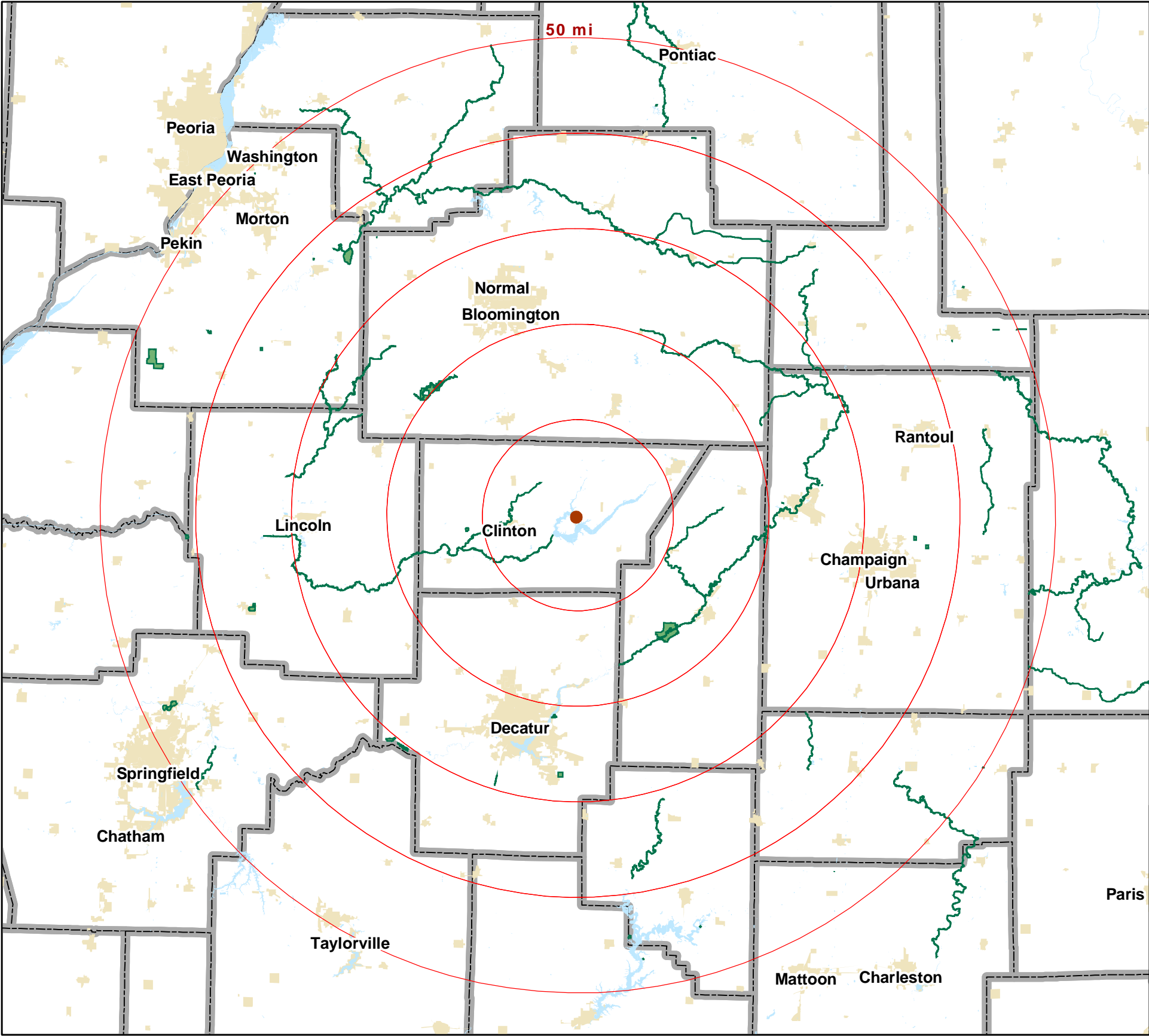




Figure 2.4-2  
Environmentally Sensitive Areas



Legend

- EGC ESP Site
- Site Buffer: 10-mi Radius
- Environmentally Sensitive Areas
- Water: Lakes and Rivers
- Incorporated/Designated Places
- County Boundary

Data Sources:  
IDNR, 2002  
U.S. Census Bureau, 2000

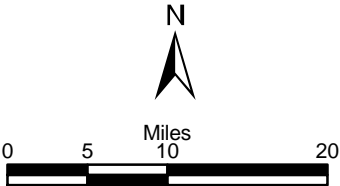
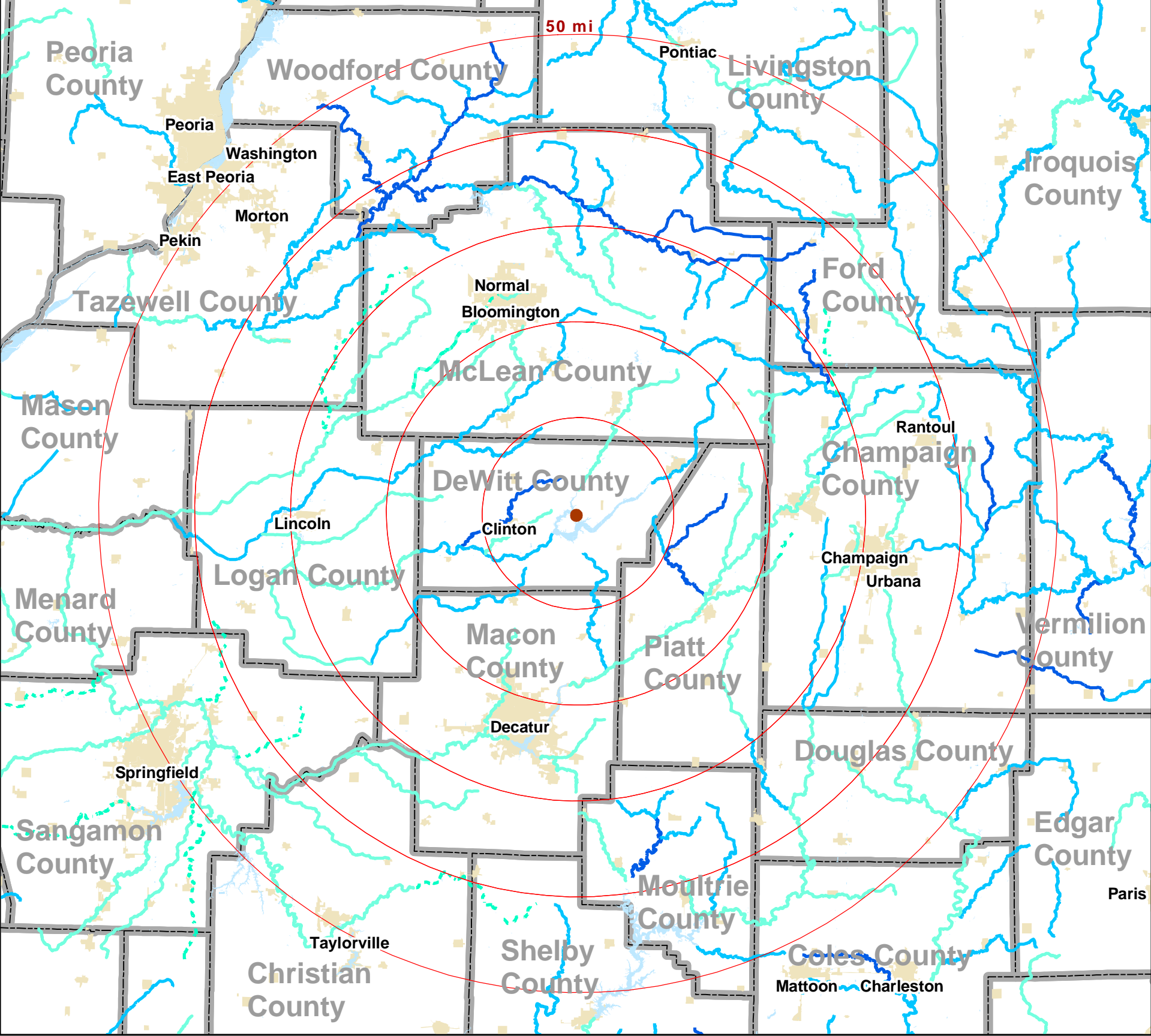


Figure 2.4-3  
Biological Stream Characterizations



Legend

- EGC ESP Site
- Site Buffer: 10-mi Radius
- Biological Stream Characterization**
  - Unique Aquatic Resource
  - Highly Valued Aquatic Resource
  - Moderate Aquatic Resource
  - Limited Aquatic Resource
  - Restricted Aquatic Resource
- Water: Lakes and Rivers
- Incorporated/Designated Places
- County Boundary

Data Sources:  
IEPA, 2002  
U.S. Census Bureau, 2000

