

DRAWING DISTRIBUTION CONTROL INSTRUCTION MEMO UPDATING DRAWING FILE

302 Series

Please update your Drawing File with the attached Drawings listed below, and destroy the superseded Drawings. Also, please sign the acknowledgment at the bottom of this memo and return to IMC Dept., Drawing Dist. Ctrl, Rm 135 South Office Bldg. TMI. Please notify IMC of any name or address changes immediately.

		F/C	L	F/I	R/C	L	R/I	
A.O. Central, OOB-2	N. Frederick		1					Date: <u>8/20/03</u>
Central File, SOB - Print Bk	IMC Dept.						1	Document: <u>603077</u>
Control Room - PDMS	A. Curry							Verify: <u>Dm</u>
Control Room - Unit 1, OOB	N. Frederick		1					
Document Center, NOB-2	IKON		1					
Eng. Office - E.R. Pgms, NOB-3	R. Green							
JPIC, Interstate Dr. - Print Book	IKON						2	
ISI - NOB-3	R. Corbit							
Maint. Dept. - I&C, Svc. Bldg.	D. Johnson	1						
Maint. Dept. - I&C/Relay Room	D. Johnson							
Maint. Dept. - I&C/Shop Lib.	D. Johnson							
Maint. Dept. - Mechanical	D. Kornbau		1					
Maint. Dept. - Electrical	D. Kornbau							
NRC, Serv. Bldg. - Print Bk	P. Sauder						1	
NRC, Washington DC - Print Bk	T. Colburn						2	
Nuclear Sampling Room, OOB-2	L. Lucas							
Operations Office, OOB-2	N. Frederick		1					
Operator Training, Sim. Bldg.	F. Kacinko							
Ops. Work Control, OSF-2	W. Price		1					
OSC, Serv. Bldg.	T. Berstler				1			
Planner, Svc. Bldg.	D. Kemble							
Plant Eng. - NOB-3	D. Schneider							
Plant Mat'l Asses. Grp, Svc. Bldg.	H. Wilson							
Plant Material Library, Svc Bldg	J. Eckroth							
Proc Improvement Project, SOB	J. Hoke		1					
Remote Shutdown Area	N. Frederick	1			1			
SRO Training, Trng Ctr	F. Kacinko							
SRO Trng, Trng Ctr - Print Bk	G. Cropper						11	
Simulator, Trng. Ctr.	R. Gumbert							
Simulator Computer, Trng Ctr	F. Henkel							
Simulator Facility, Trng Ctr	IKON		1					
Simulator Management, Trng Ctr	B. Fraser							
Site Security - U-1 PC	M. Bruecks							
System Books (All), OOB-2	N. Frederick							
TSC	IKON				3			
Training Center Library Training	C. Flory							
Training Maintenance, Bldg. 43	A. Bassham						1	
Training, Trng. Ctr - Print Bk	G. Cropper						1	
Training, Trng. Ctr - Print Bk	M. Willenbecker						1	
Training, Trng. Ctr - Print Bk	G. Hoek						2	
Training, Trng. Ctr - Print Bk	M. Weaver						1	
Training, Trng. Ctr - Print Bk	B. Fraser						1	
Training, Trng. Ctr - Print Bk	D. Boltz						1	

CONSTRUCTION
DRAWINGS - COPY
DRAWING AS HARD
COPY SIZE. NO STAMP.
COPIES FOLDED

ADDITIONAL INSTRUCTIONS/COMMENTS

I hereby acknowledge receipt of this memo and have complied with the instructions.

Signature _____

Date _____

'D' Size - Laminated: C 8 1
NO STAMP FOR INFO DRAWINGS

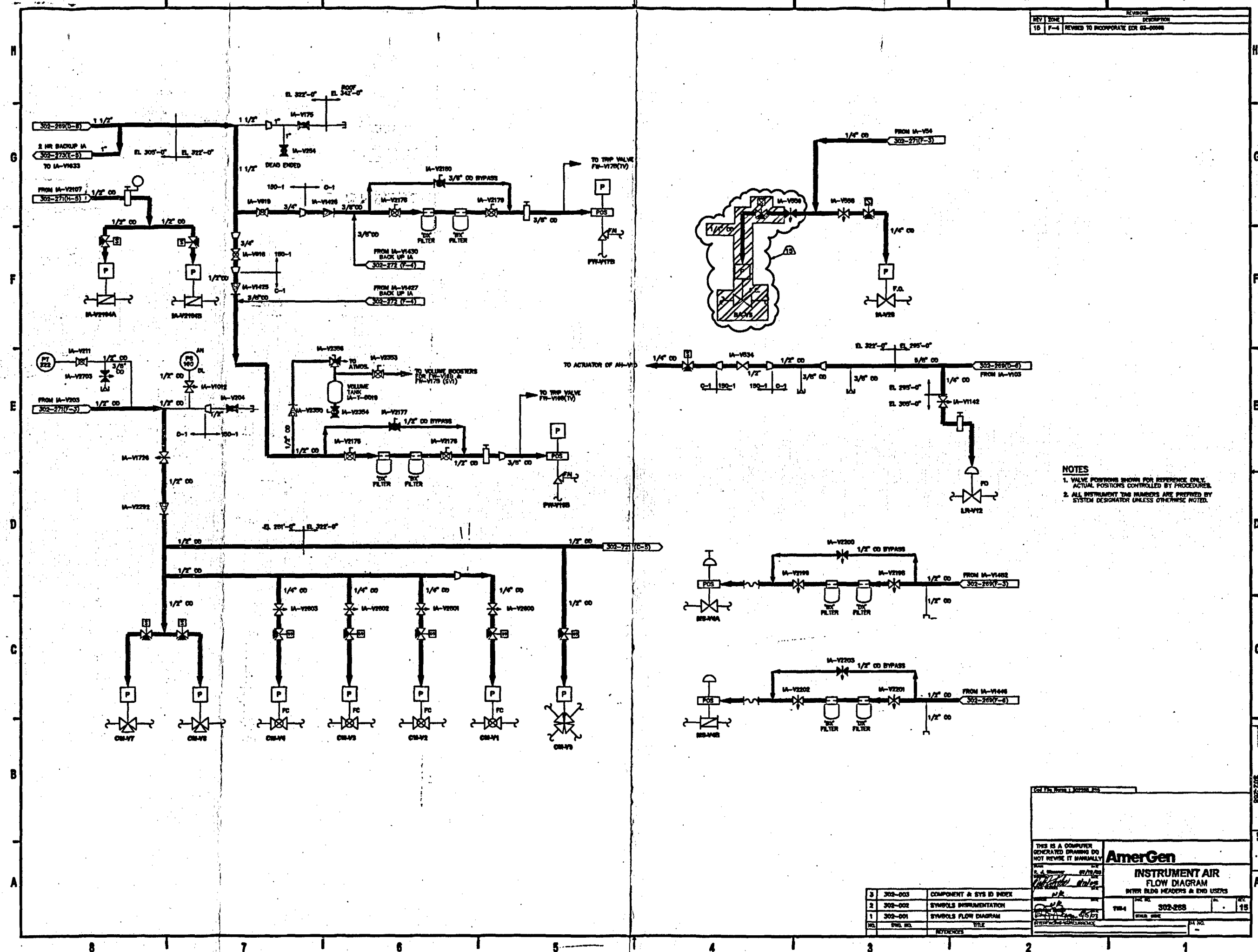
'D' Size - Folded: C 2 1 TOTAL 2
NO STAMP FOR INFO DRAWINGS

Reduced Laminated
(11x17 & 3-Hole Punch): C _____

Reduced: C 5 1 24 TOTAL 29
(11x17 & 3-Hole Punch)
NO STAMP FOR INFO DRAWINGS

Special Instructions _____

REV	DATE	DESCRIPTION
10	7-4	REVISED TO INCORPORATE EDR 03-0048

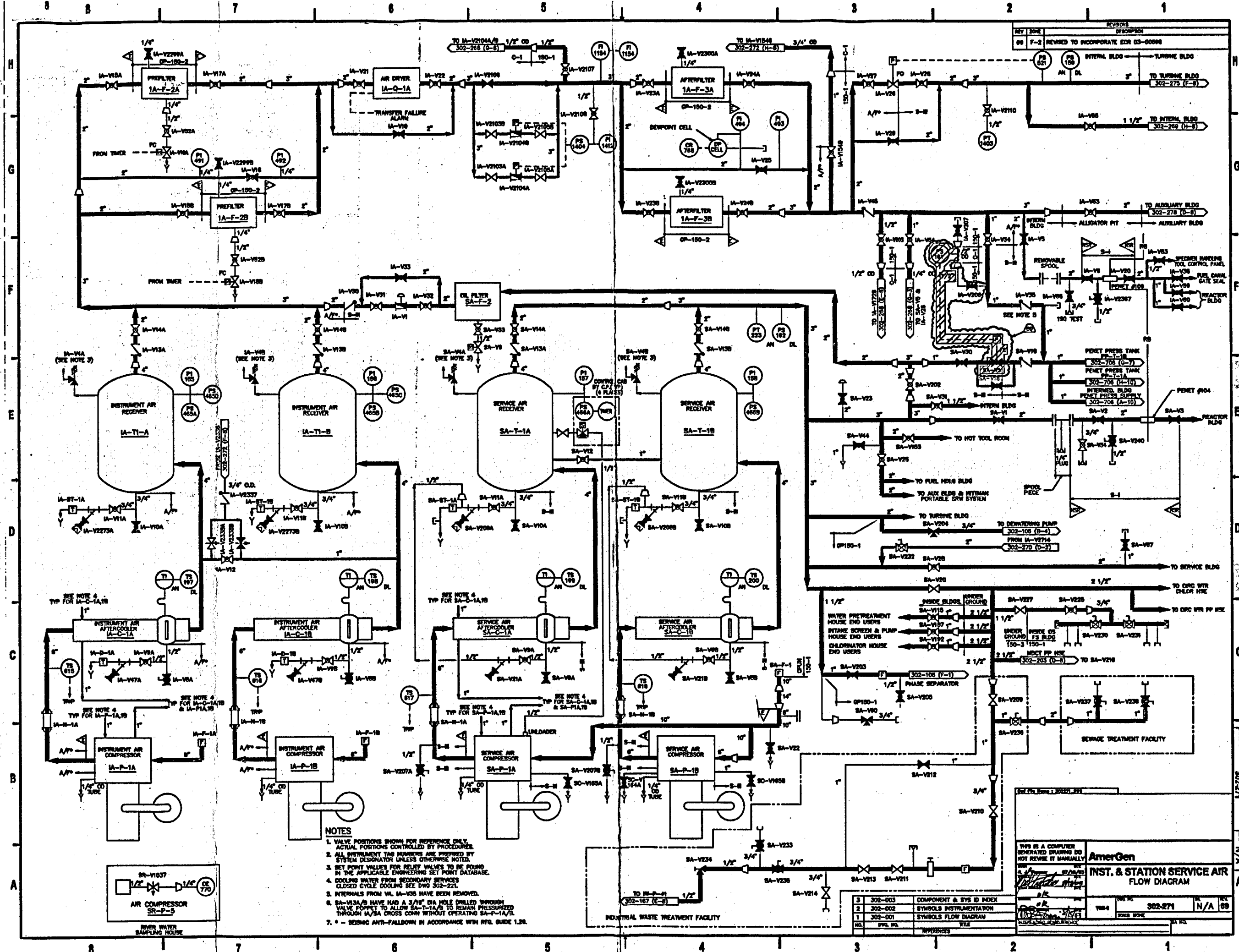


NOTES

1. VALVE POSITIONS SHOWN FOR REFERENCE ONLY. ACTUAL POSITIONS CONTROLLED BY PROCEDURES.
2. ALL INSTRUMENT TAG NUMBERS ARE PREFIXED BY SYSTEM DESIGNATOR UNLESS OTHERWISE NOTED.

NO.	FIG. NO.	REFERENCES	TITLE
3	302-003		COMPONENT & SYS ID INDEX
2	302-002		SYMBOLS INSTRUMENTATION
1	302-001		SYMBOLS FLOW DIAGRAM

THIS IS A COMPUTER GENERATED DRAWING DO NOT REVISE IT MANUALLY		AmerGen	
INSTRUMENT AIR FLOW DIAGRAM		INTER BLDG HEADERS & END USERS	
DATE	BY	DATE	BY
7/18/03	W. J. [Signature]	7/18/03	W. J. [Signature]
FIG. NO.	302-003	SCALE	AS SHOWN
REV.	10	DATE	7-4



- NOTES
1. VALVE POSITIONS SHOWN FOR REFERENCE ONLY. ACTUAL POSITIONS CONTROLLED BY PROCEDURES.
 2. ALL INSTRUMENT TAG NUMBERS ARE PREPARED BY SYSTEM DESIGNATOR UNLESS OTHERWISE NOTED.
 3. SET POINT VALUES FOR RELIEF VALVES TO BE FOUND IN THE APPLICABLE ENGINEERING SET POINT DATABASE.
 4. COOLING WATER FROM SECONDARY SERVICES CLOSED CYCLE COOLING SEE DWG 302-221.
 5. INTERNALS FROM VAL. IA-V38 HAVE BEEN REMOVED.
 6. SA-V38A/B HAVE HAD A 3/16" DIA HOLE DRILLED THROUGH VALVE POPPET TO ALLOW SA-T-1A/B TO REMAIN PRESSURIZED THROUGH IA/SA CROSS CORN WITHOUT OPERATING SA-P-1A/B.
 7. - - - BEARING ANTI-FALLDOWN IN ACCORDANCE WITH REG. GUIDE 1.38.

NO.	REV. NO.	REVISED
1	1	302-001
2	2	302-002
3	3	302-003

THIS IS A COMPUTER GENERATED DRAWING DO NOT REUSE IT MANUALLY		AmerGen	
INST. & STATION SERVICE AIR FLOW DIAGRAM		302-271	
302-271		302-271	
302-271		302-271	

