



Westinghouse Electric Company
Nuclear Power Plants
P.O. Box 355
Pittsburgh, Pennsylvania 15230-0355
USA

U.S. Nuclear Regulatory Commission
Document Control Desk
Washington, D.C. 20555

Direct tel: 412-374-5355
Direct fax: 412-374-5456
e-mail: corletmm@westinghouse.com

Your ref: Docket No. 52-006
Our ref: DCP/NRC1614

August 22, 2003

SUBJECT: Transmittal of Floor Response Spectra Comparisons

The attached information is provided for your consideration in response to discussions held with the staff on August 14, 2003. Direct comparisons are provided for the revisions of the floor response spectra in DCD Figures 3.7.2-15, 3.7.2-16 and 3.7.2-16. Each comparison shows the raw and broadened spectra provided in DCD Revision 6 (marked on the figure as Rev 3) together with the raw spectra that was included in DCD Revision 3 (marked on the figure as Rev 2). The node number shown on the legend is the same as that shown on the figures in the DCD.

The changes in results are primarily due to the reduced shear wall stiffness described in the response to DSER Open Item 3.7.2.3-1. There are also changes to the stick models as described in the response to RAI 230.018, revision 3 (DSER OI 3.7.2.3-2).

Please contact me if you have further questions on this information.

Very truly yours,

A handwritten signature in black ink, appearing to read "M. M. Corletti".

M. M. Corletti
Passive Plant Projects & Development
AP600 & AP1000 Projects

/Attachment

1. "Floor Response Spectra Comparisons"

DD63

August 22, 2003

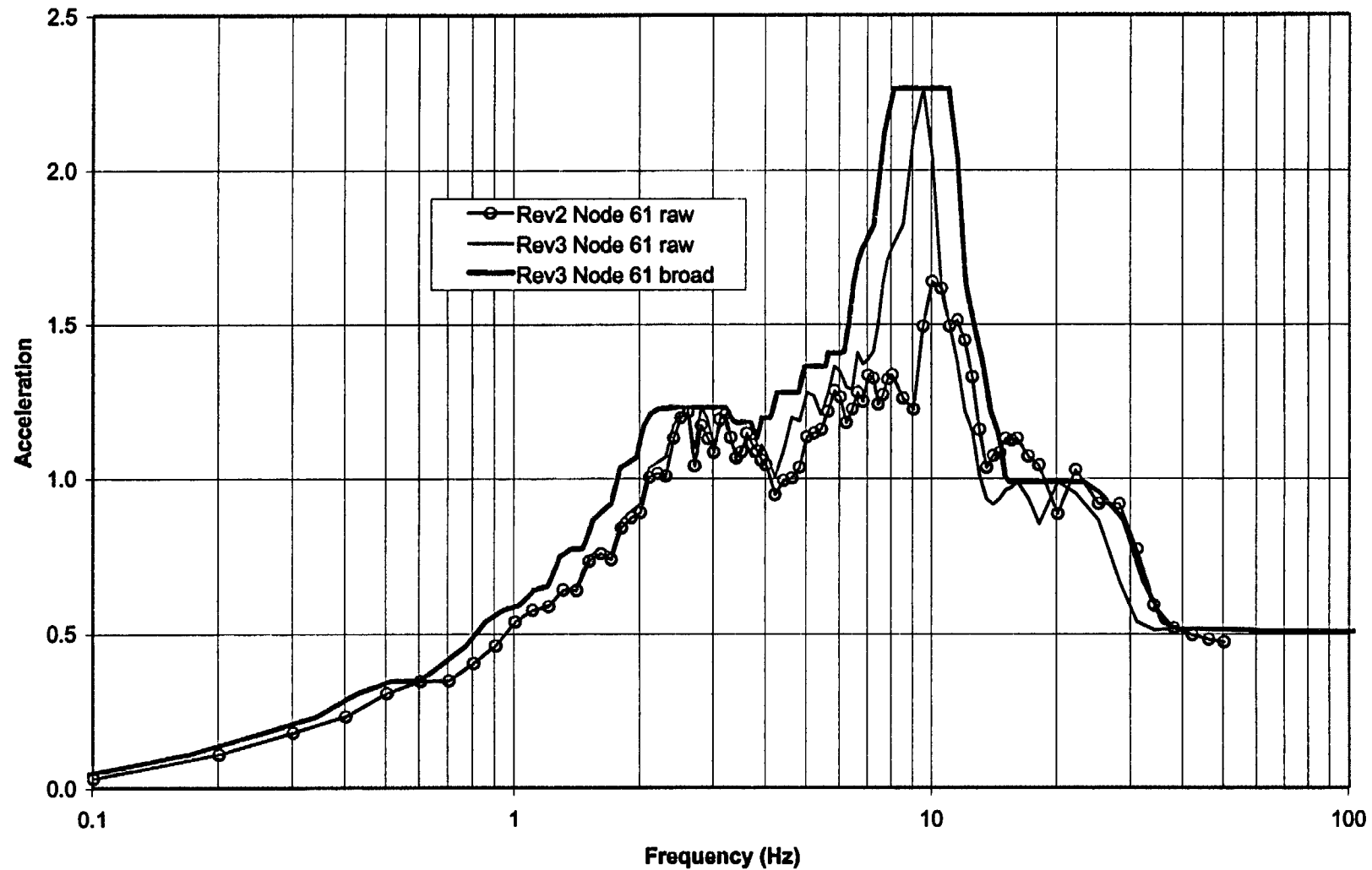
Attachment 1

Floor Response Spectra Comparisons

August 22, 2003

5% FRS Comparison X Direction

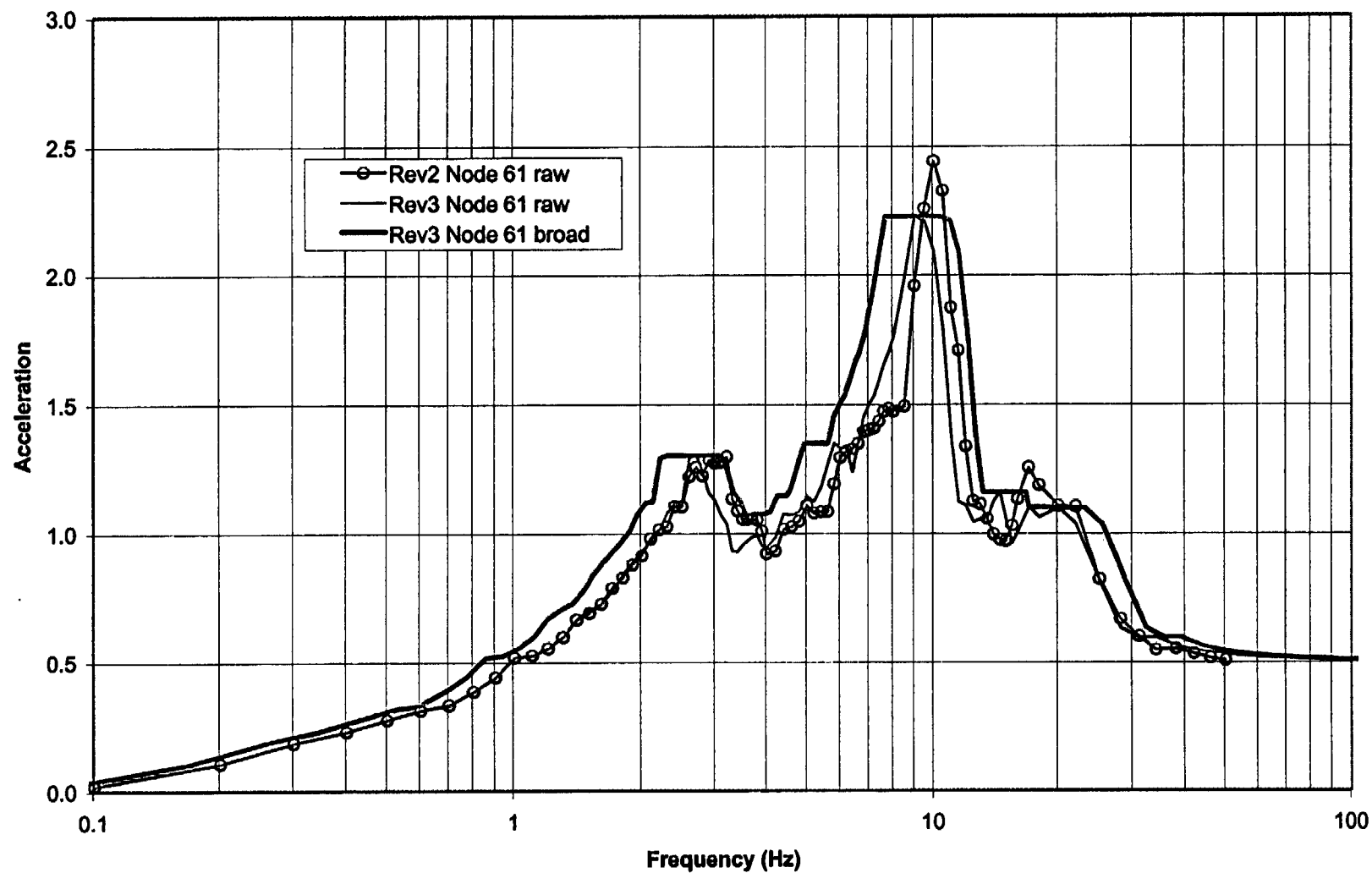
1 of 30



August 22, 2003

2 of 30

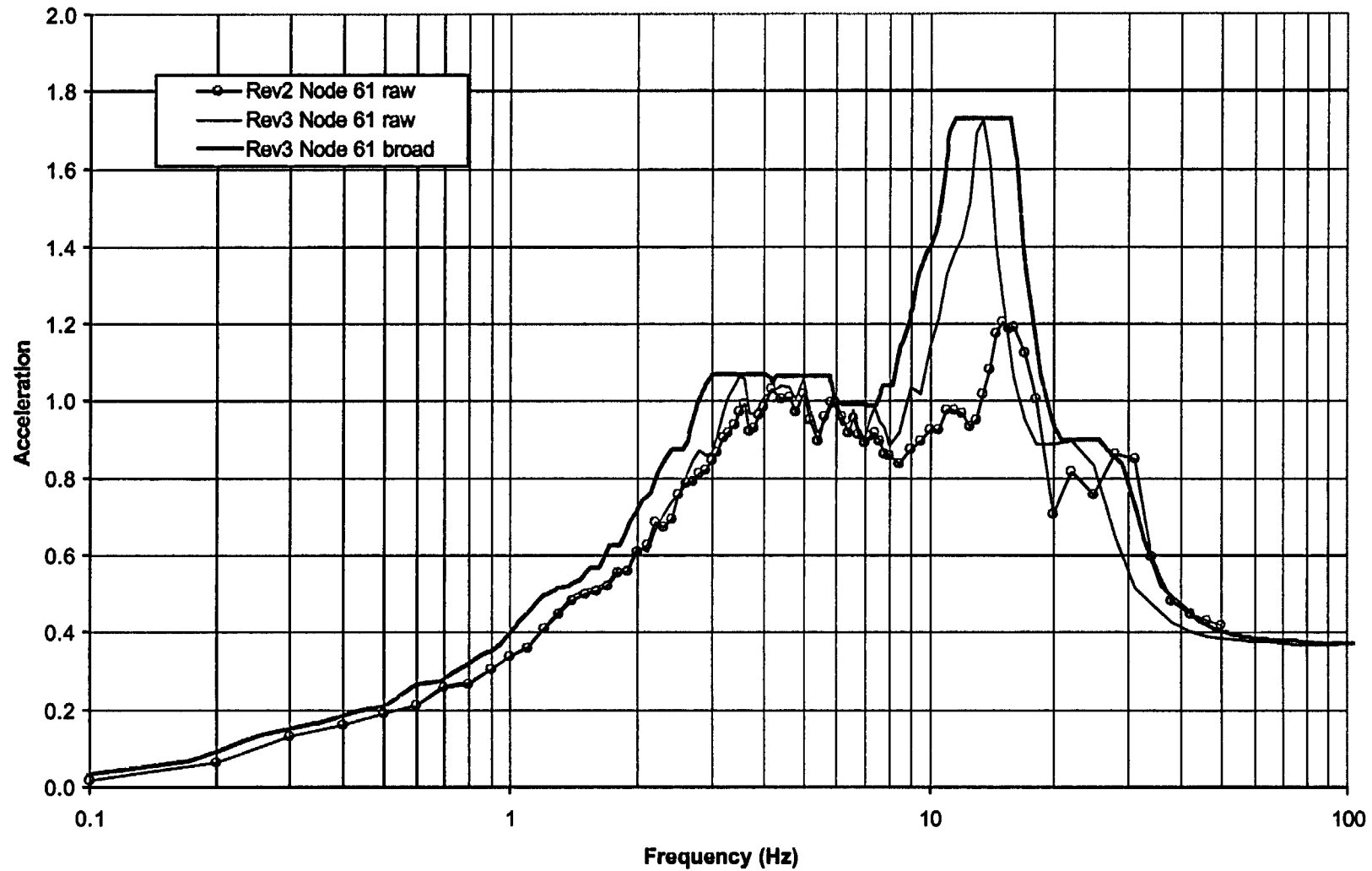
5% FRS Comparison Y Direction



August 22, 2003

5% FRS Comparison Z Direction

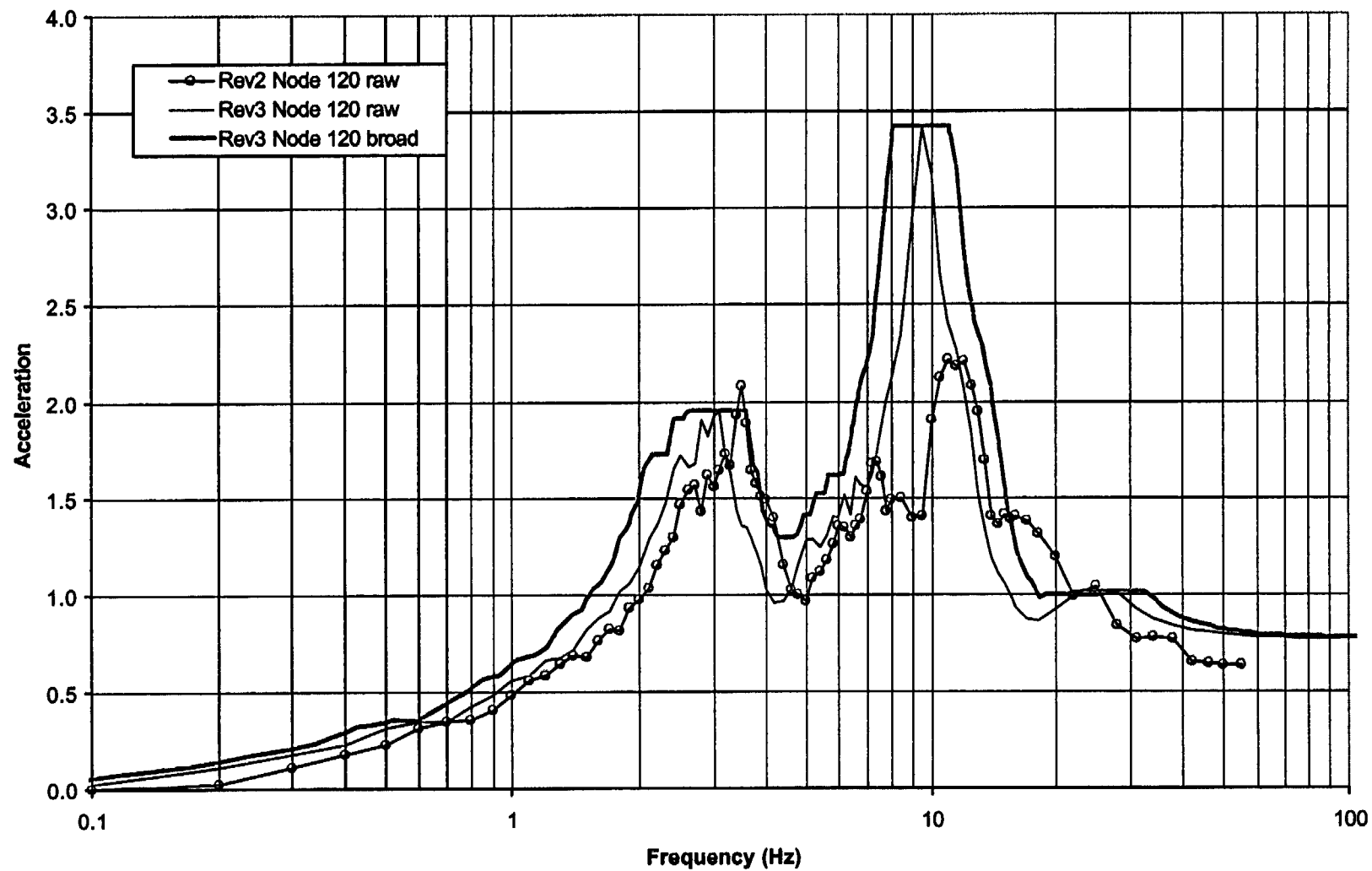
3 of 30



August 22, 2003

5% FRS Comparison X Direction

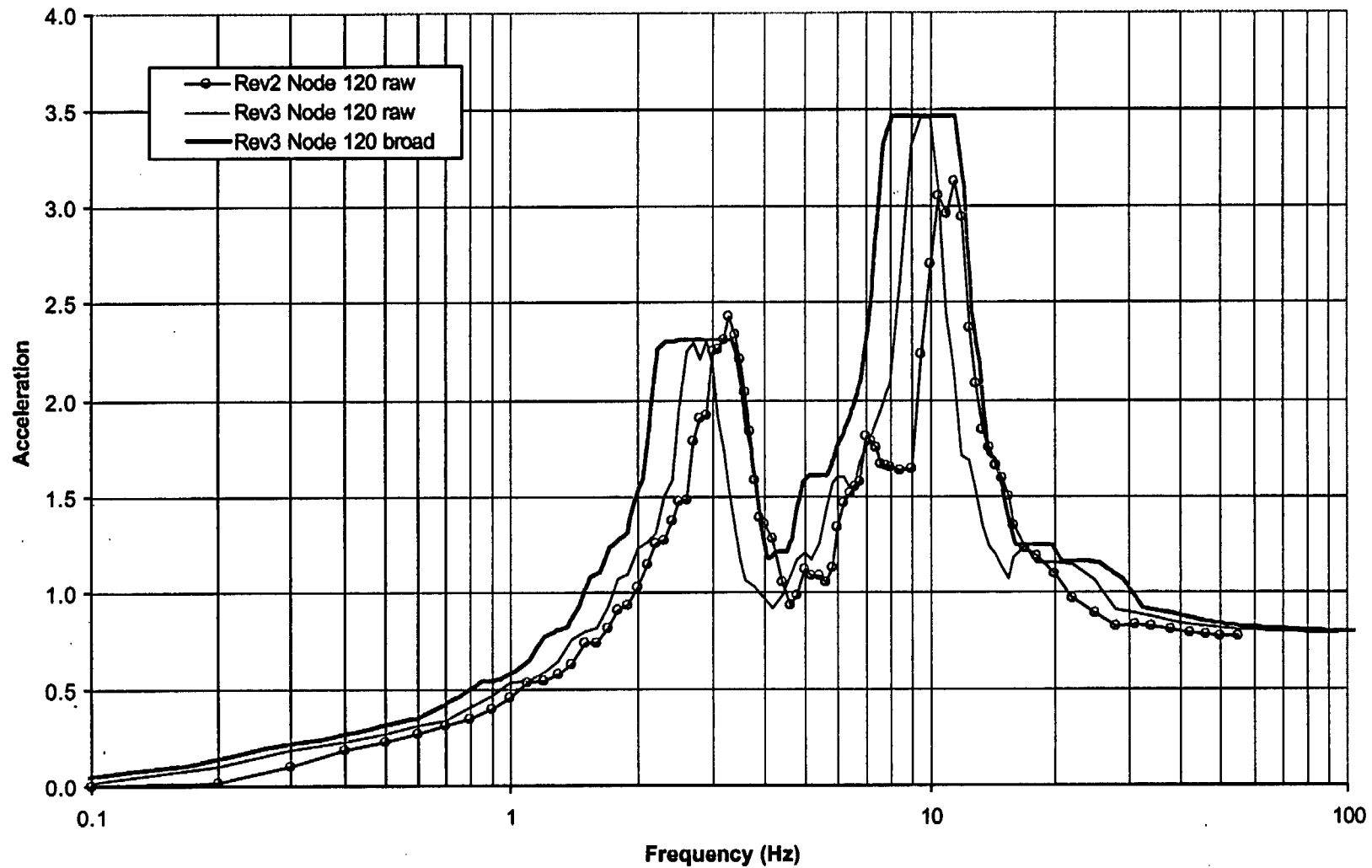
4 of 30



August 22, 2003

5 of 30

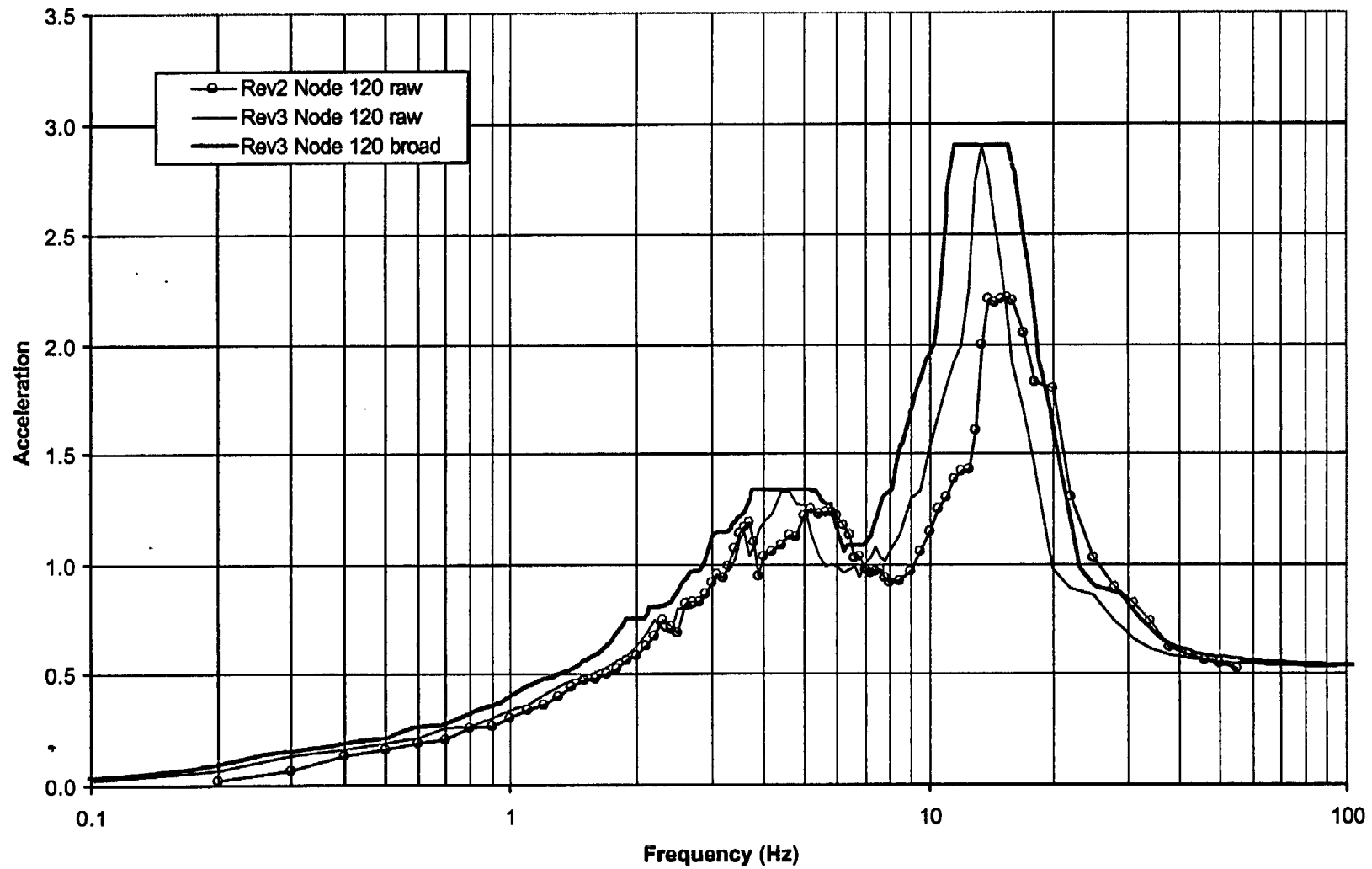
5% FRS Comparison Y Direction



August 22, 2003

5% FRS Comparison Z Direction

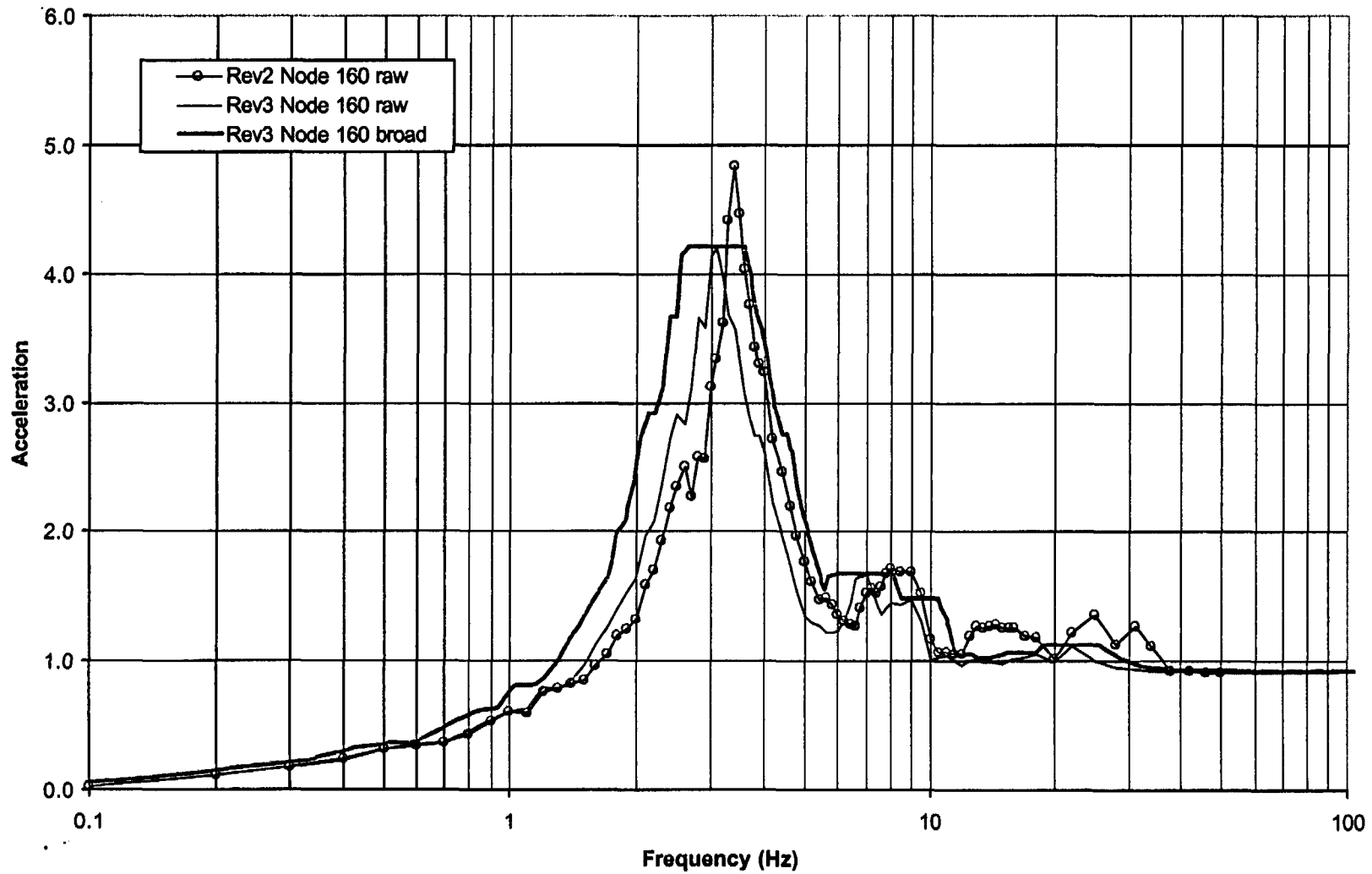
6 of 30



August 22, 2003

5% FRS Comparison X Direction

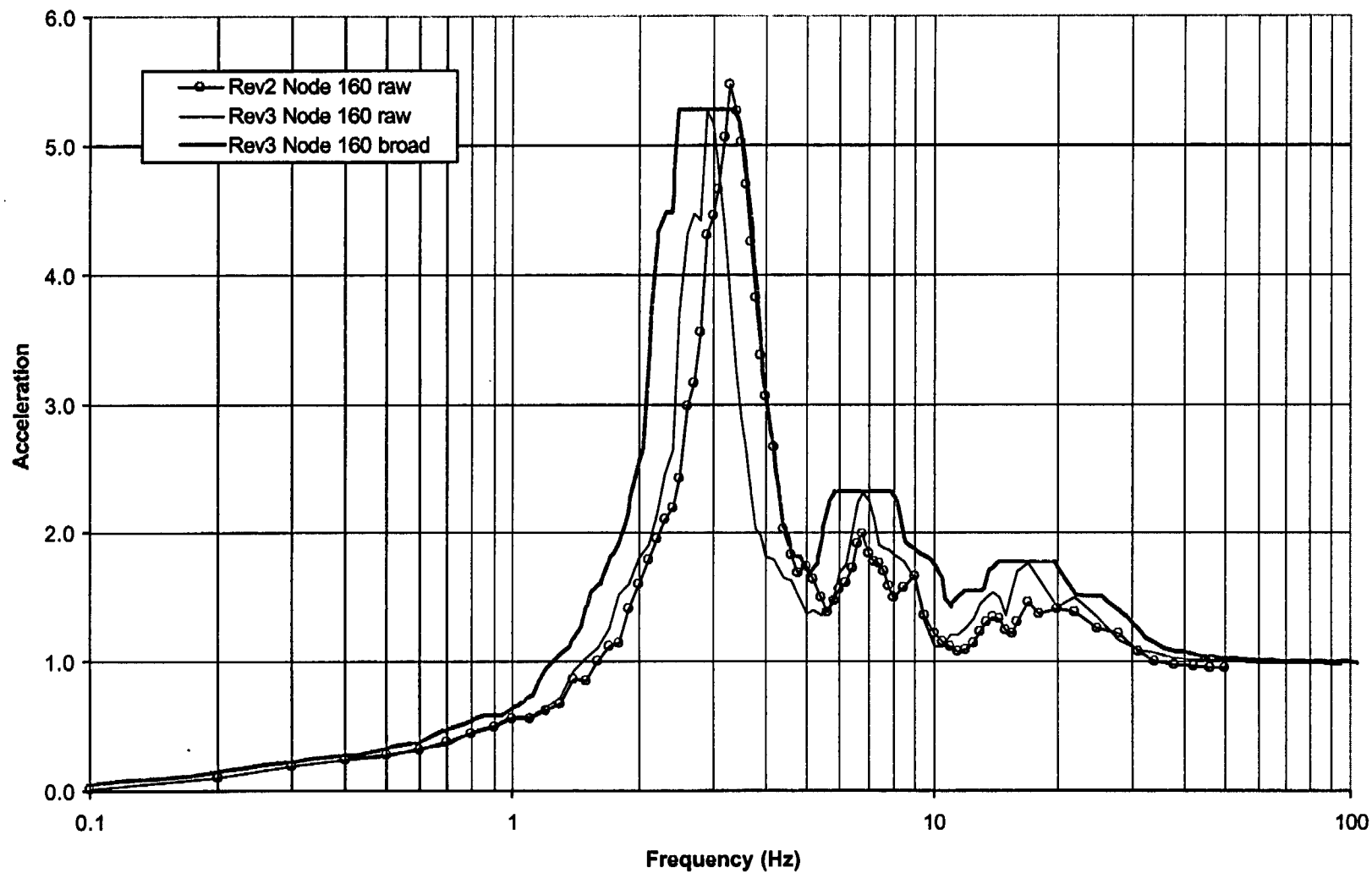
7 of 30



August 22, 2003

8 of 30

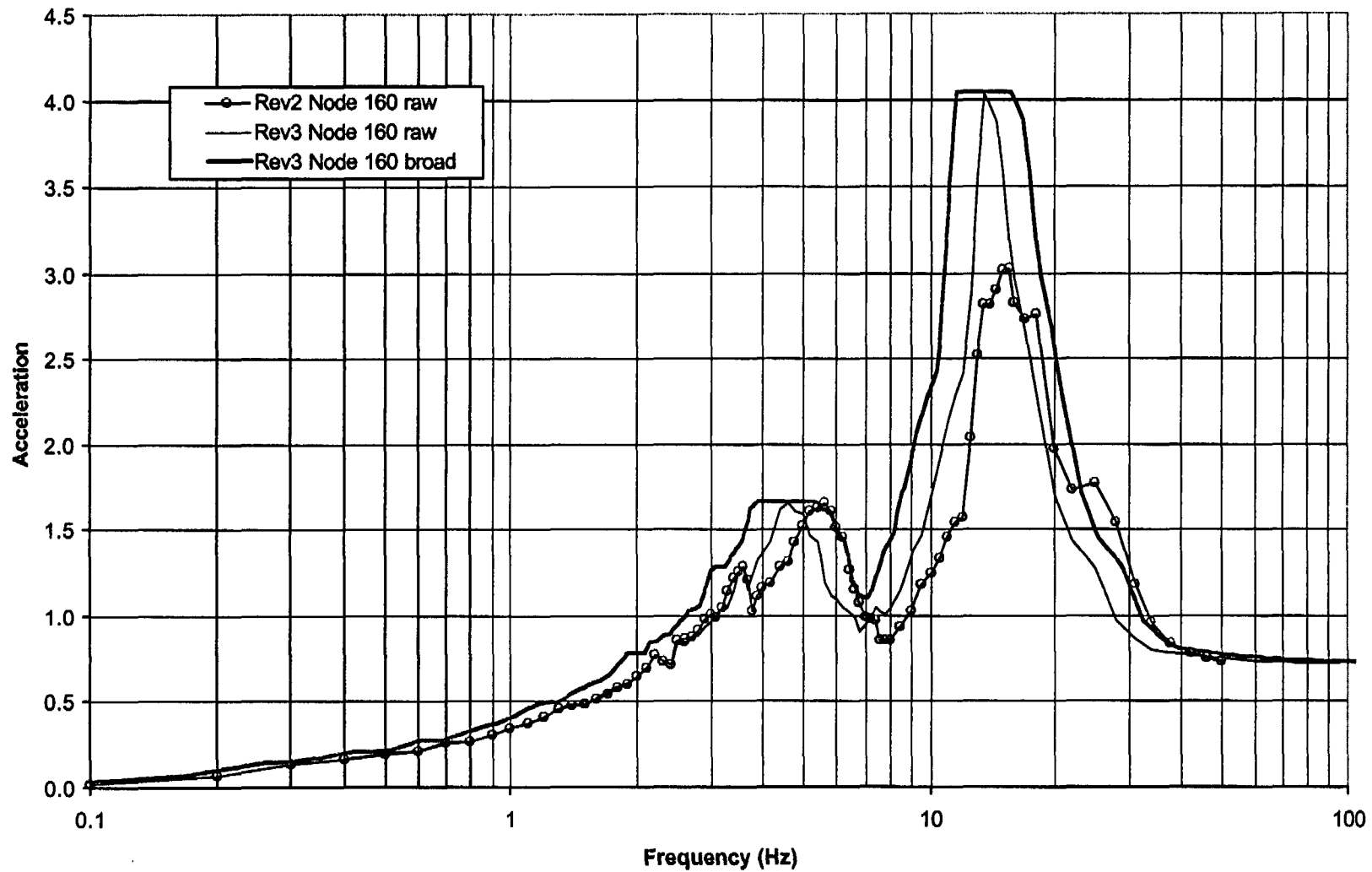
5% FRS Comparison Y Direction



August 22, 2003

9 of 30

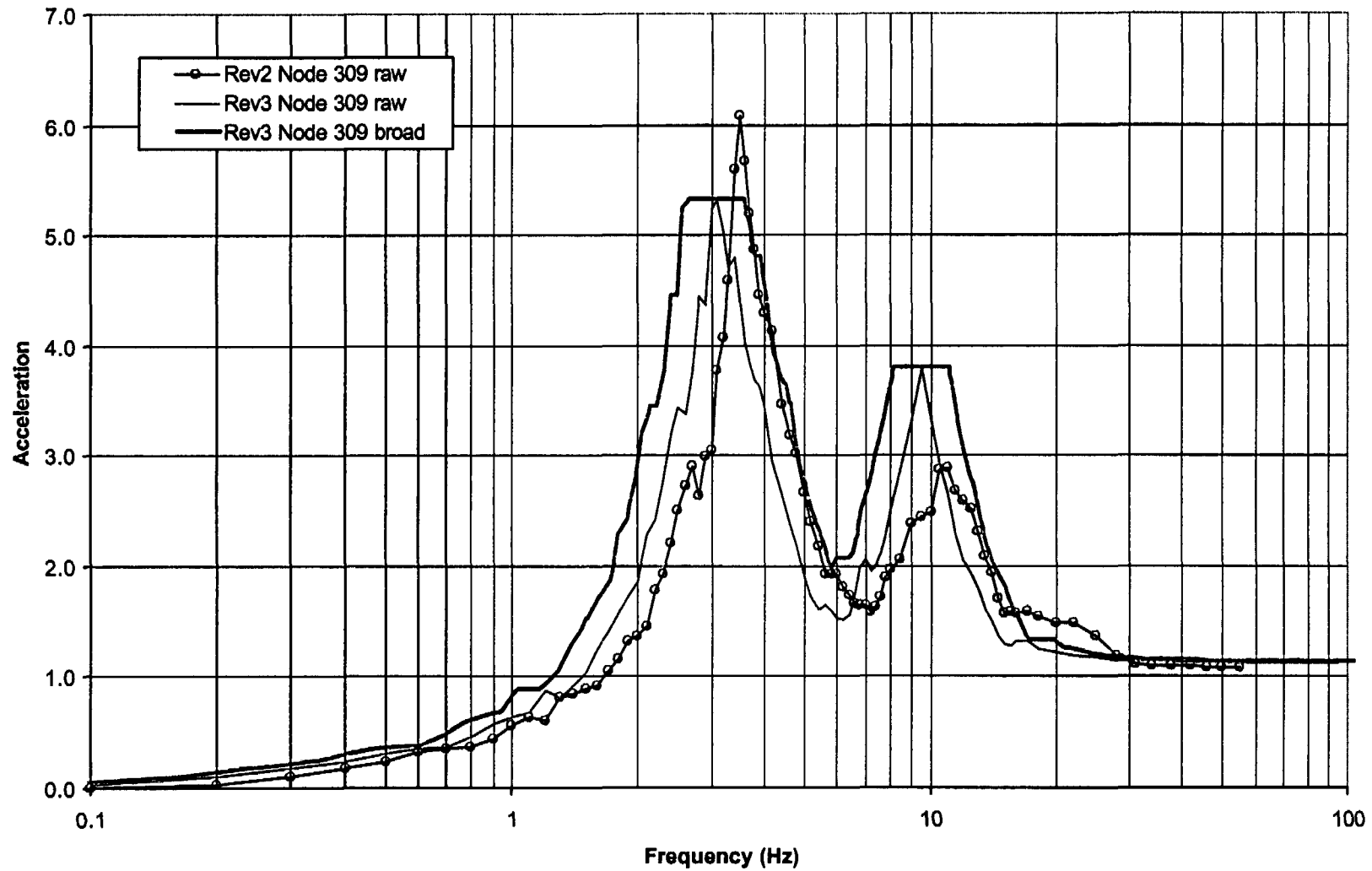
5% FRS Comparison Z Direction



August 22, 2003

5% FRS Comparison X Direction

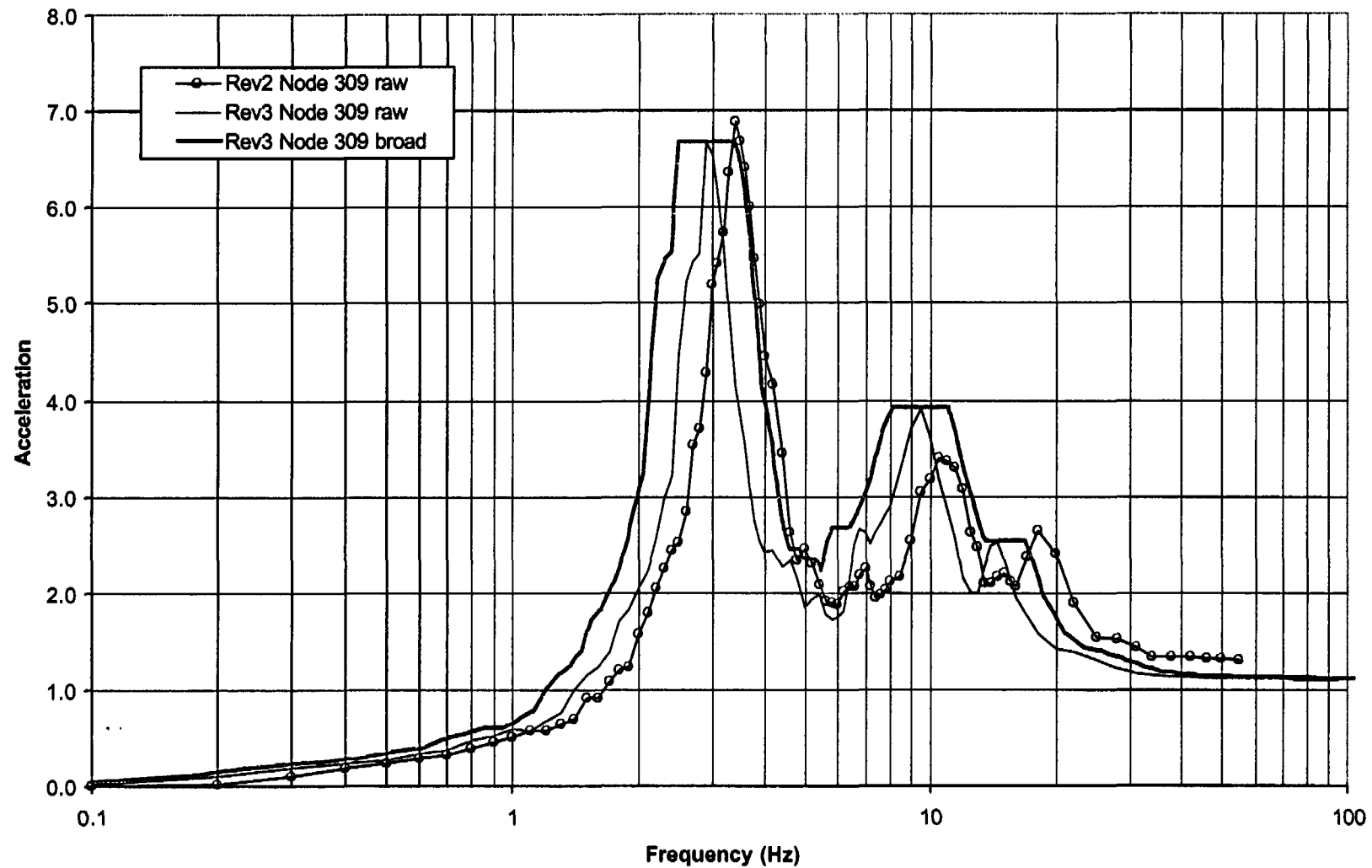
10 of 30



August 22, 2003

11 of 30

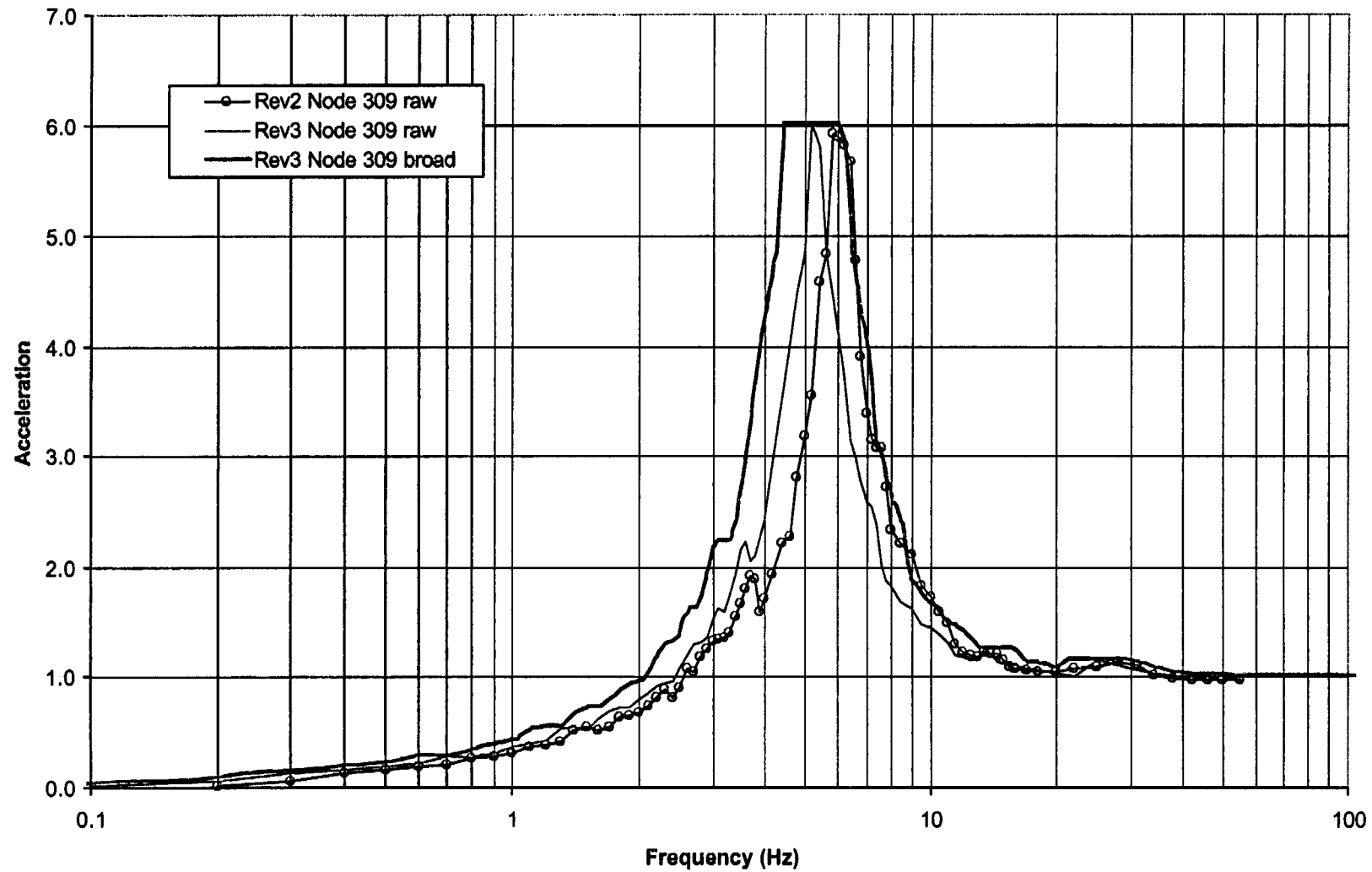
5% FRS Comparison Y Direction



August 22, 2003

12 of 30

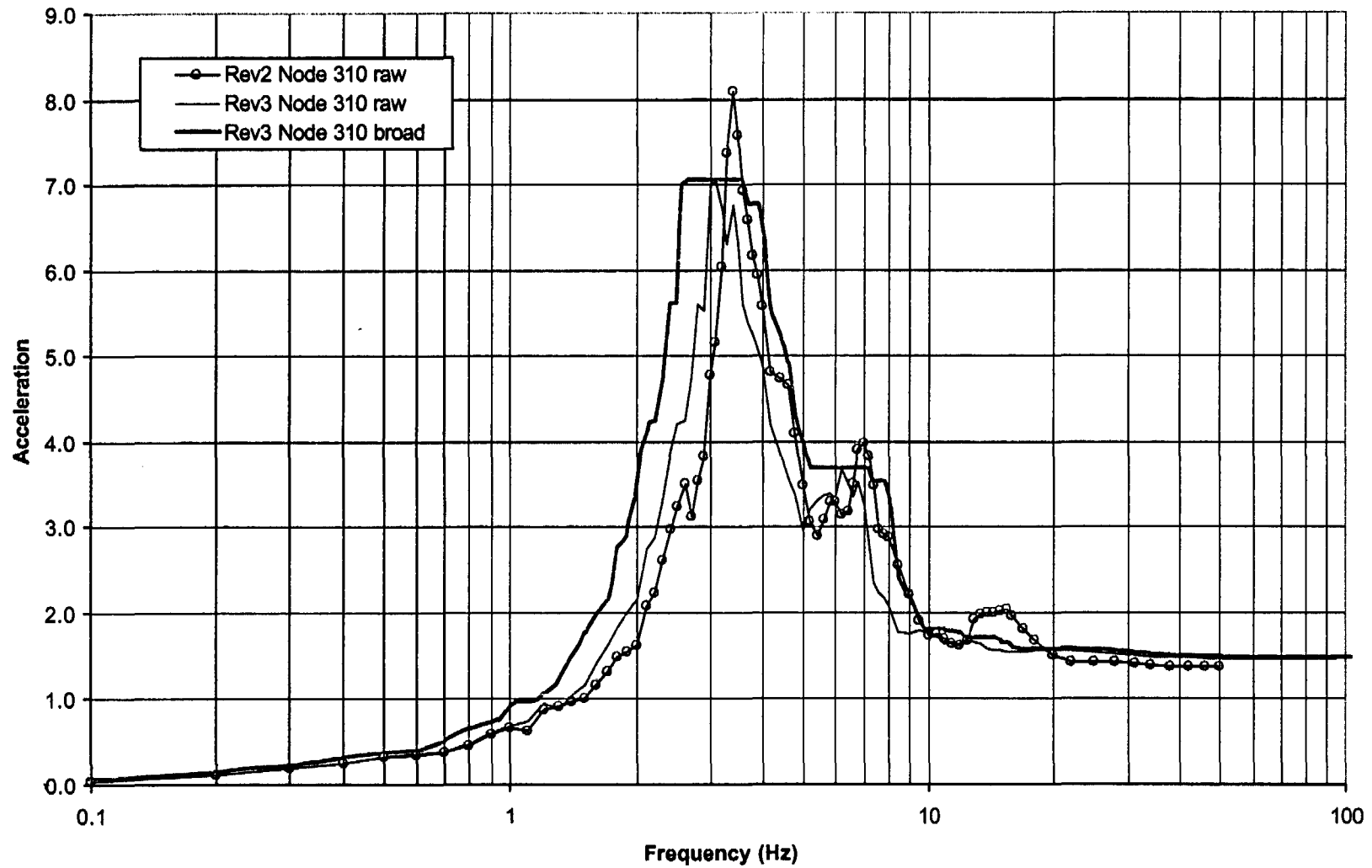
5% FRS Comparison Z Direction



August 22, 2003

5% FRS Comparison X Direction

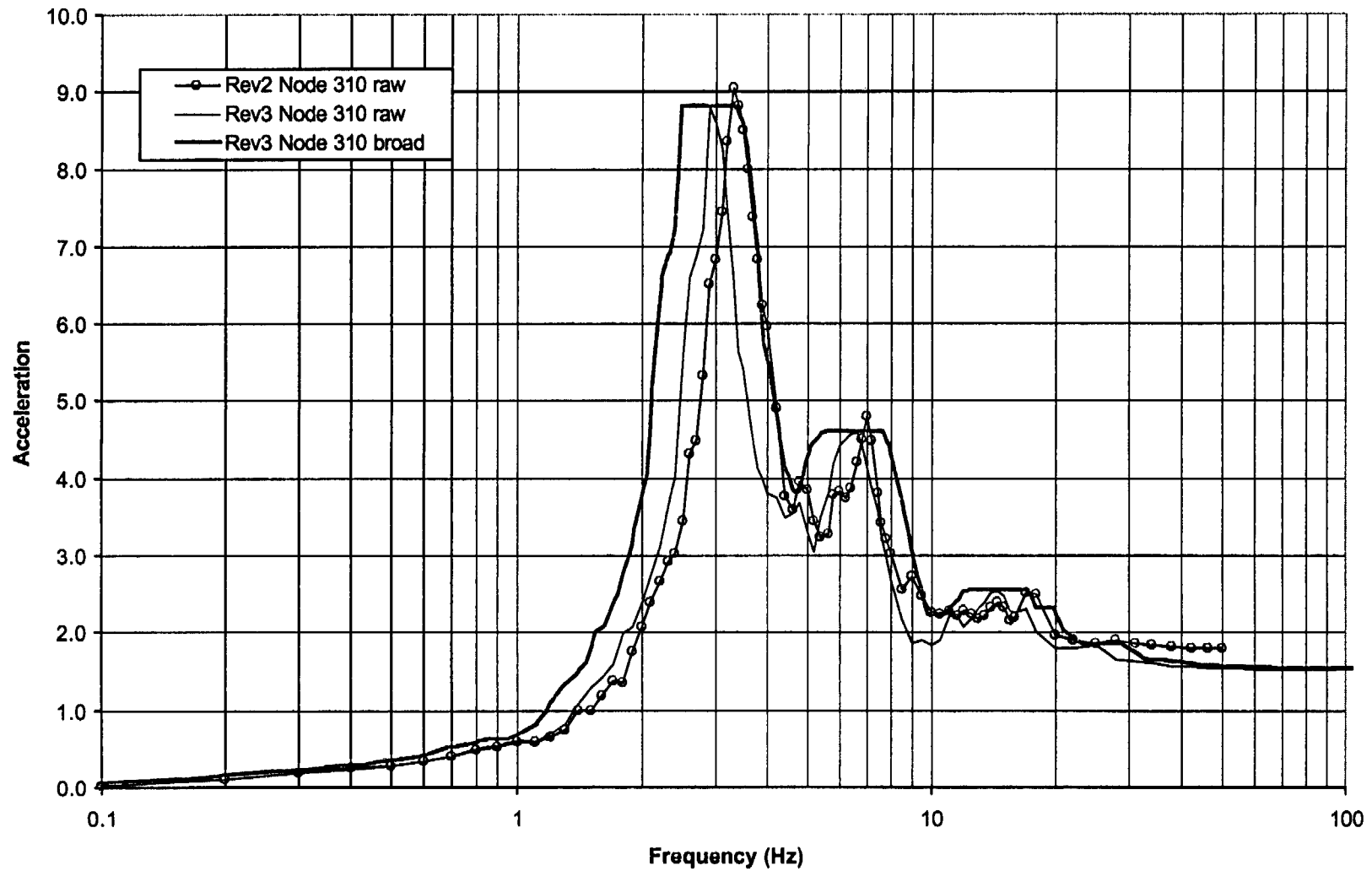
13 of 30



August 22, 2003

5% FRS Comparison Y Direction

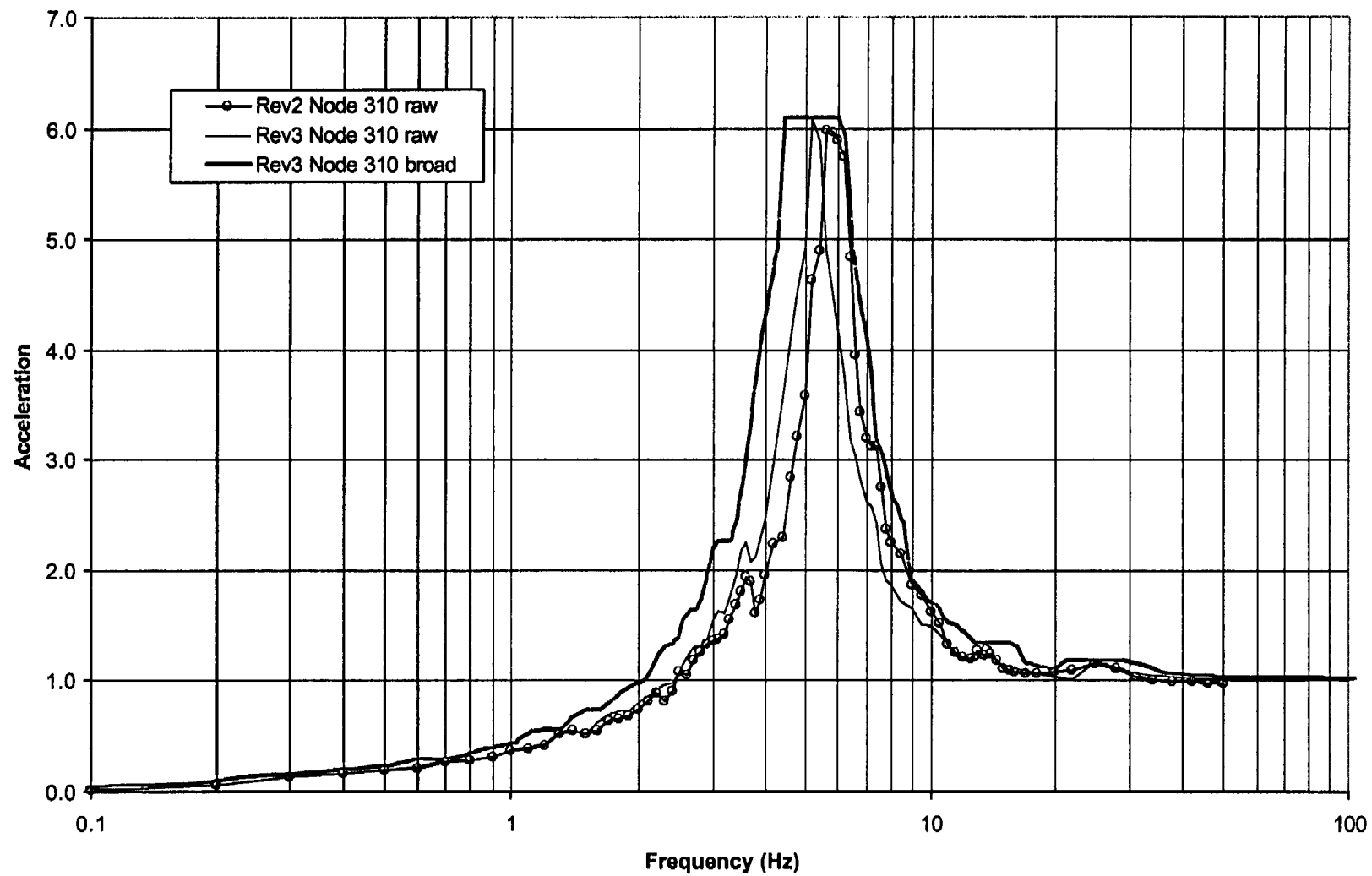
14 of 30



August 22, 2003

15 of 30

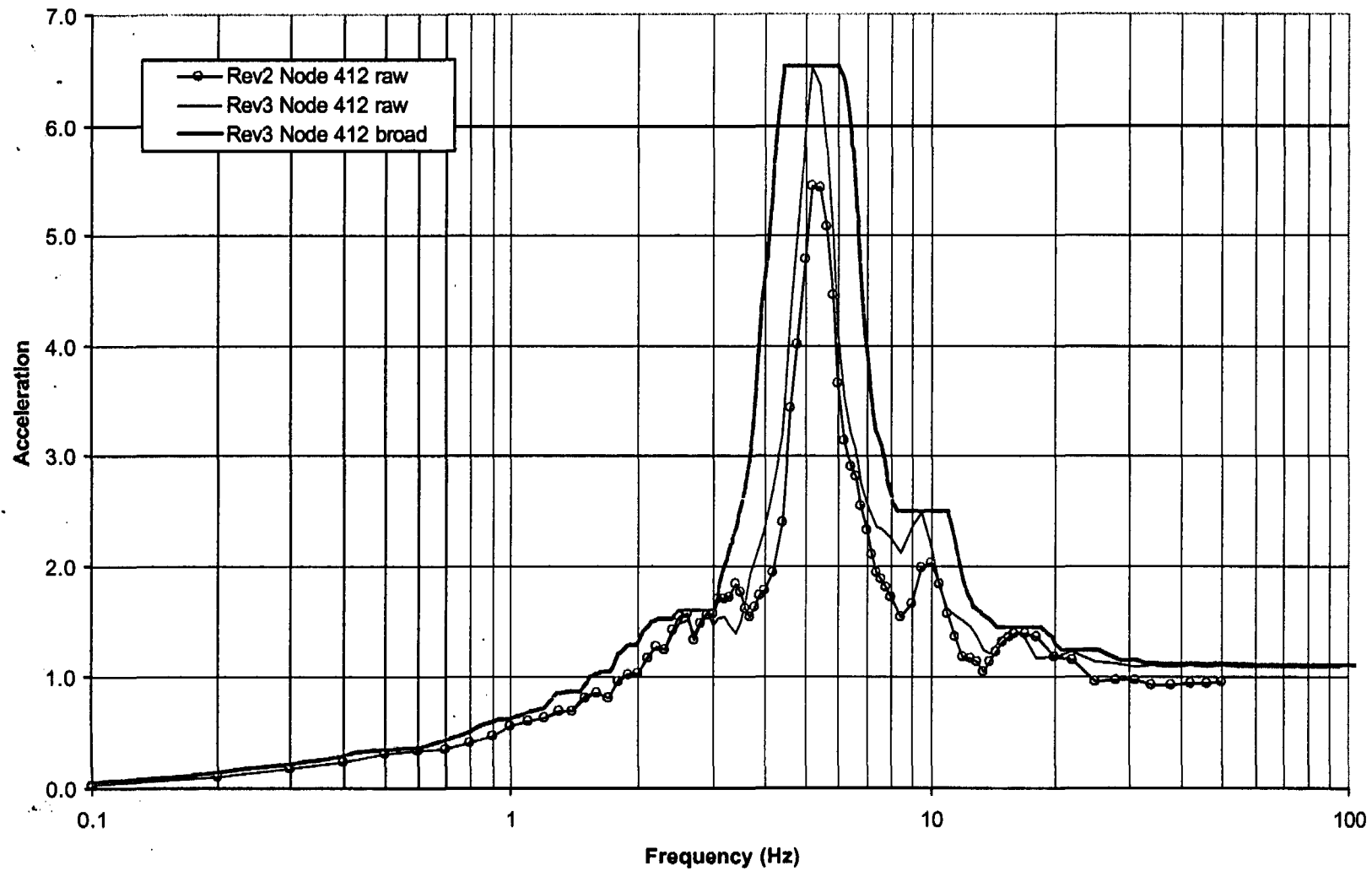
5% FRS Comparison Z Direction



August 22, 2003

16 of 30

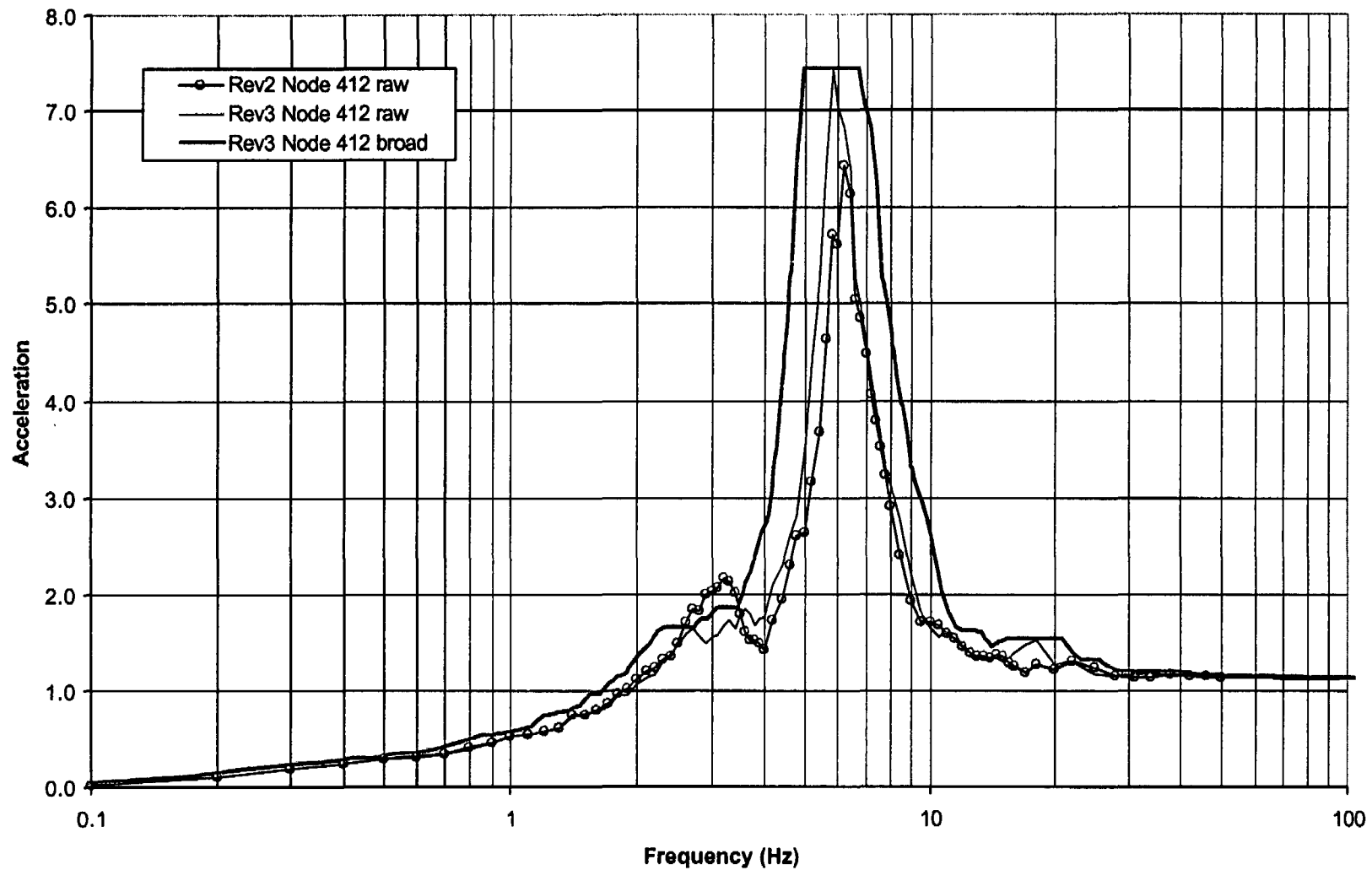
5% FRS Comparison X Direction



August 22, 2003

17 of 30

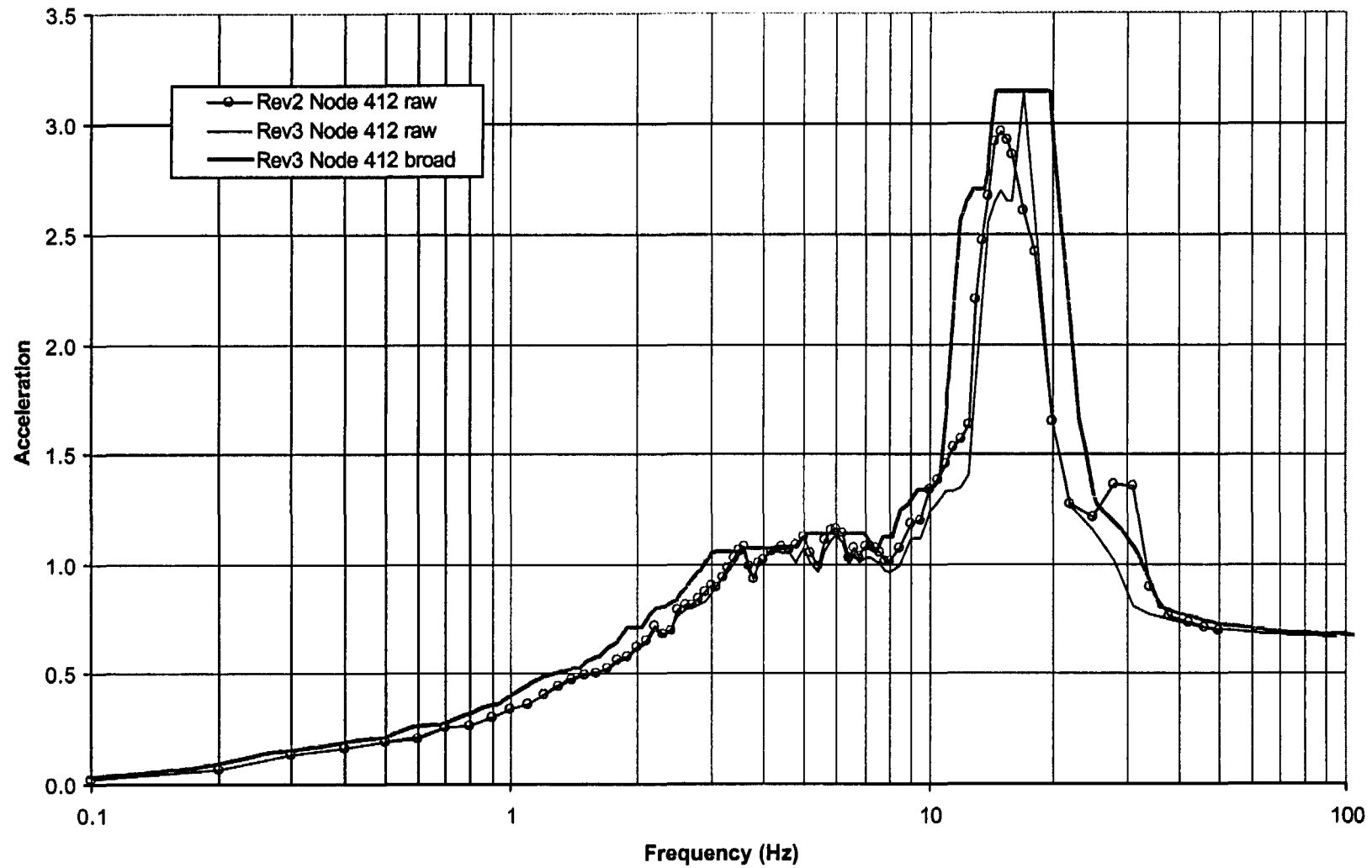
5% FRS Comparison Y Direction



August 22, 2003

18 of 30

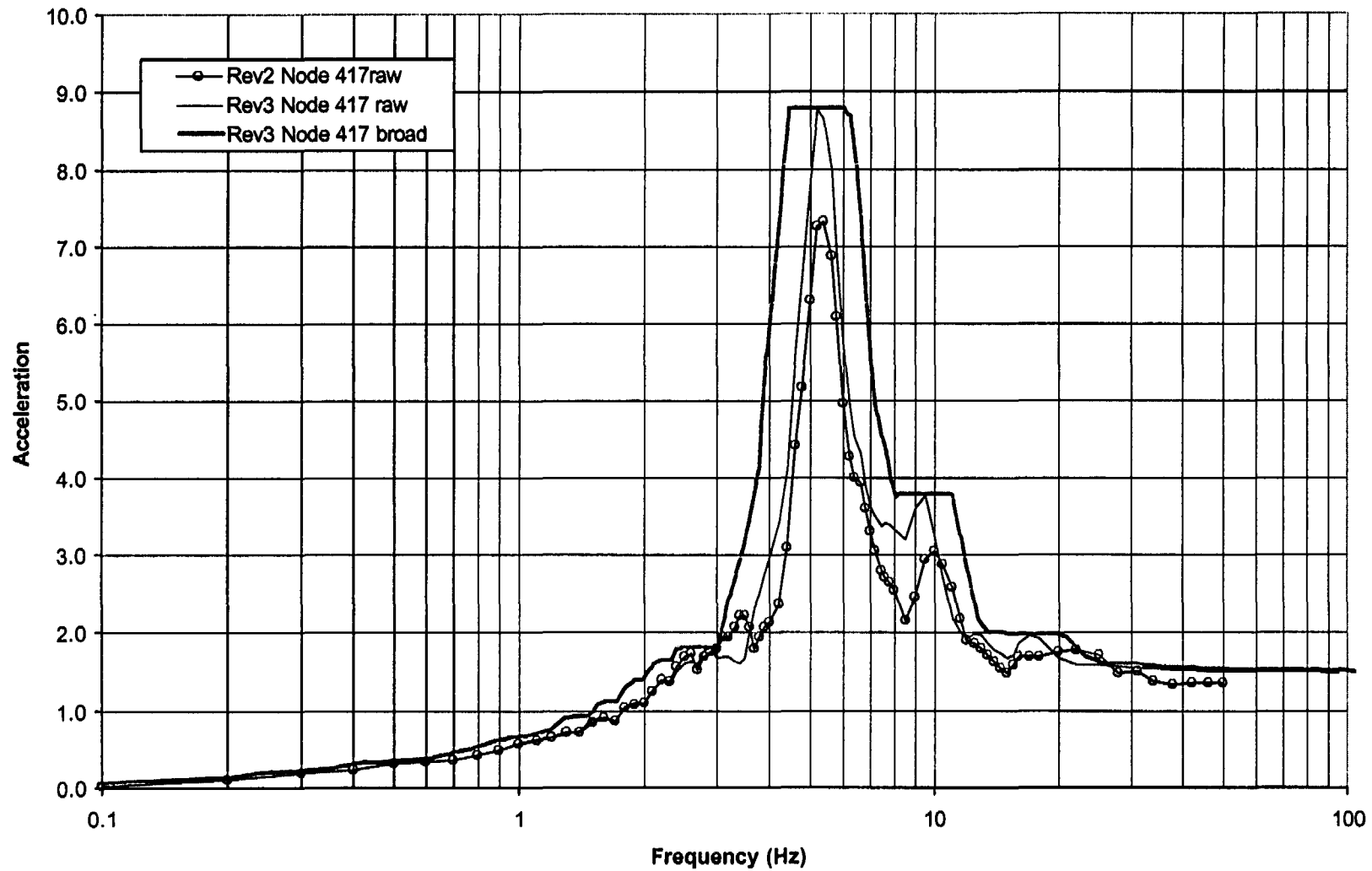
5% FRS Comparison Z Direction



August 22, 2003

5% FRS Comparison X Direction

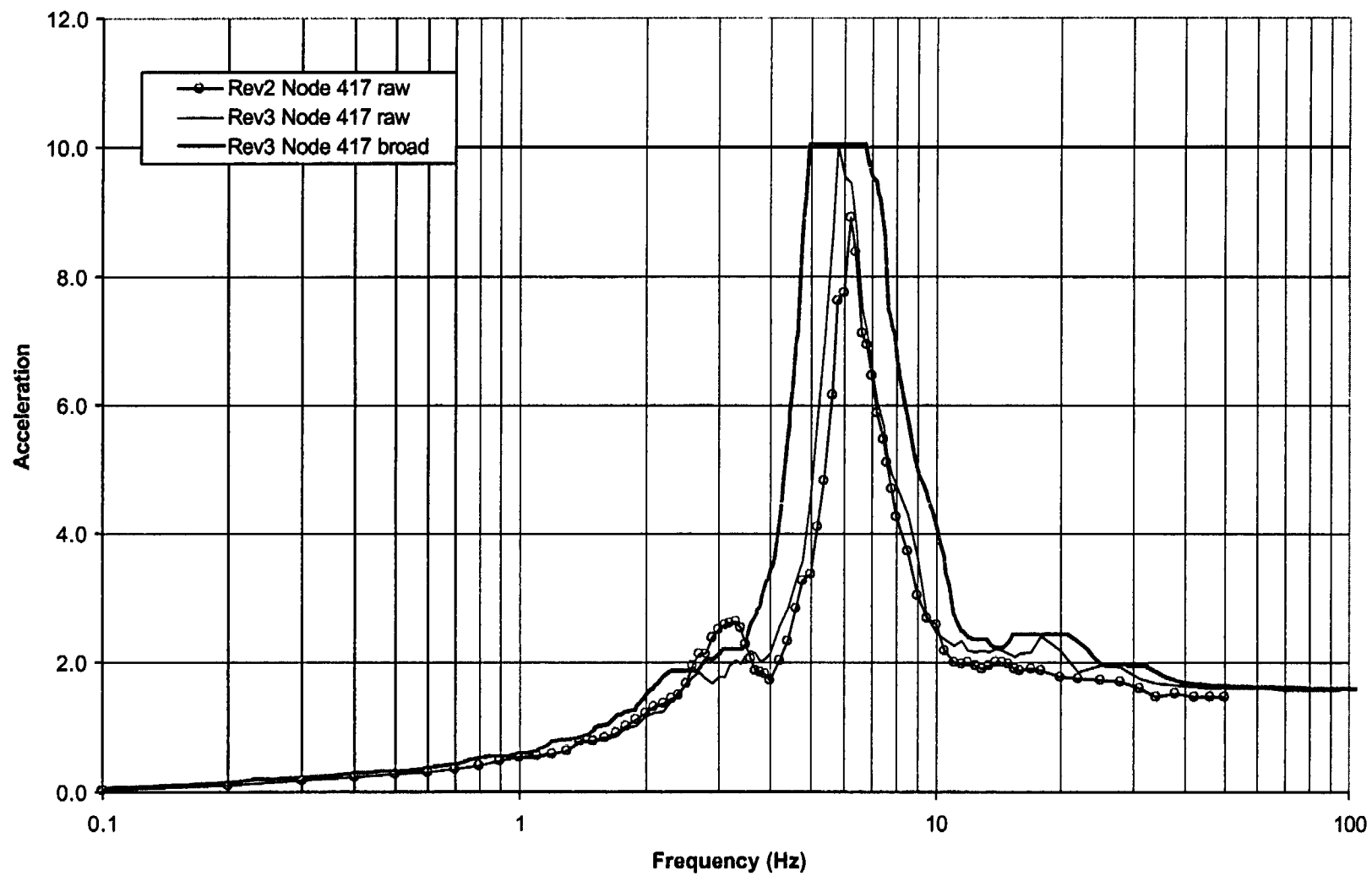
19 of 30



August 22, 2003

5% FRS Comparison Y Direction

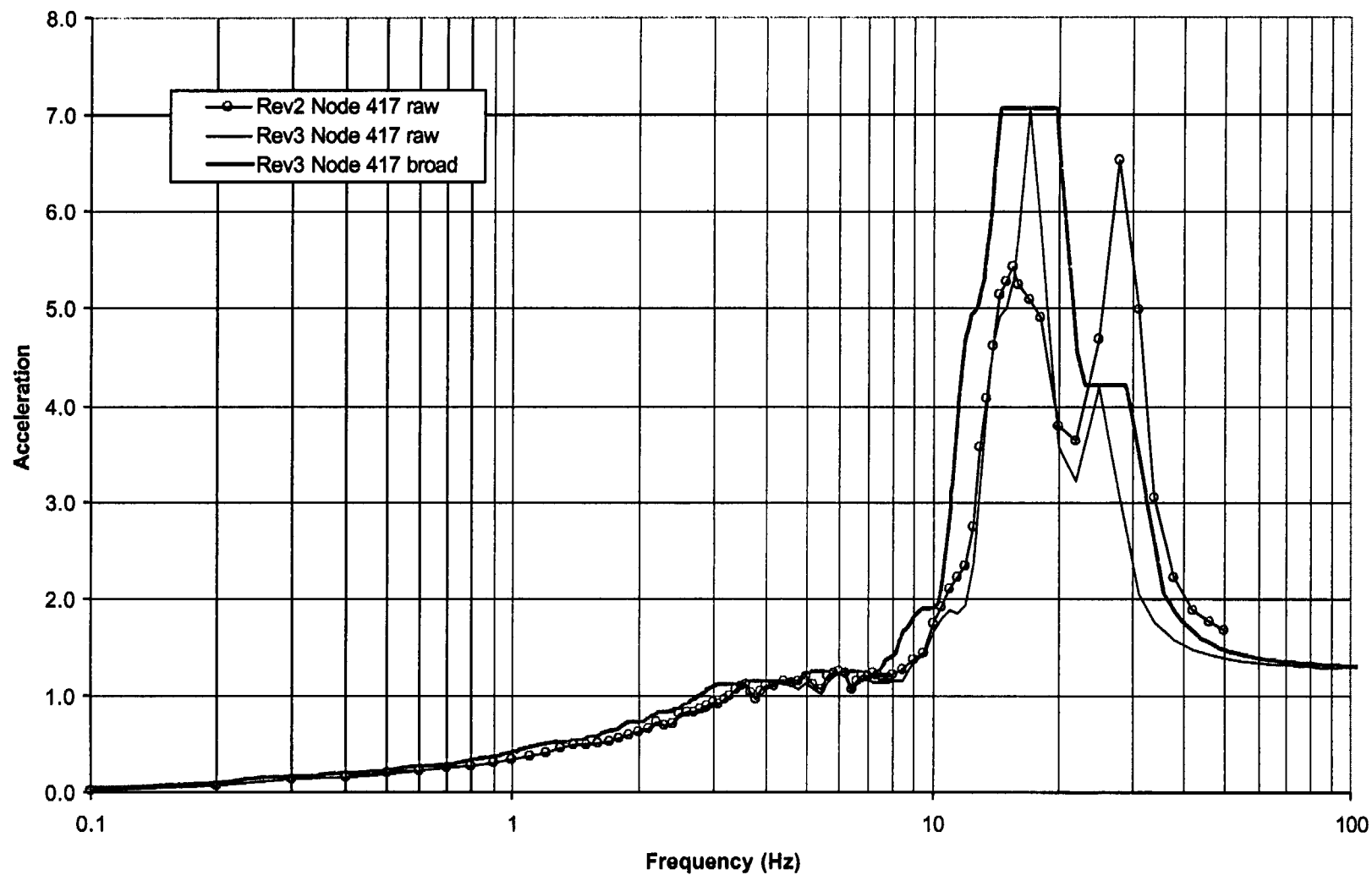
20 of 30



August 22, 2003

5% FRS Comparison Z Direction

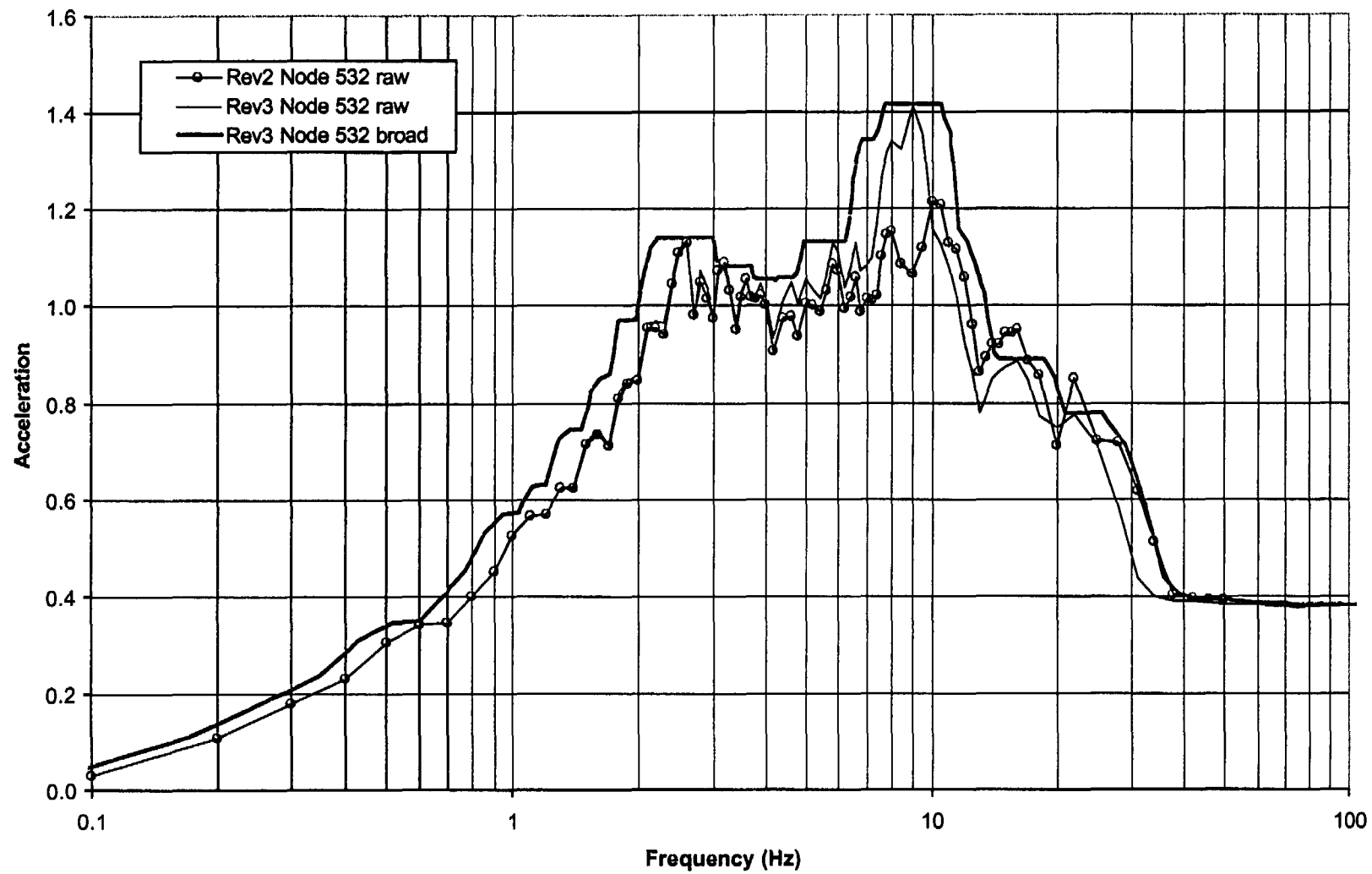
21 of 30



August 22, 2003

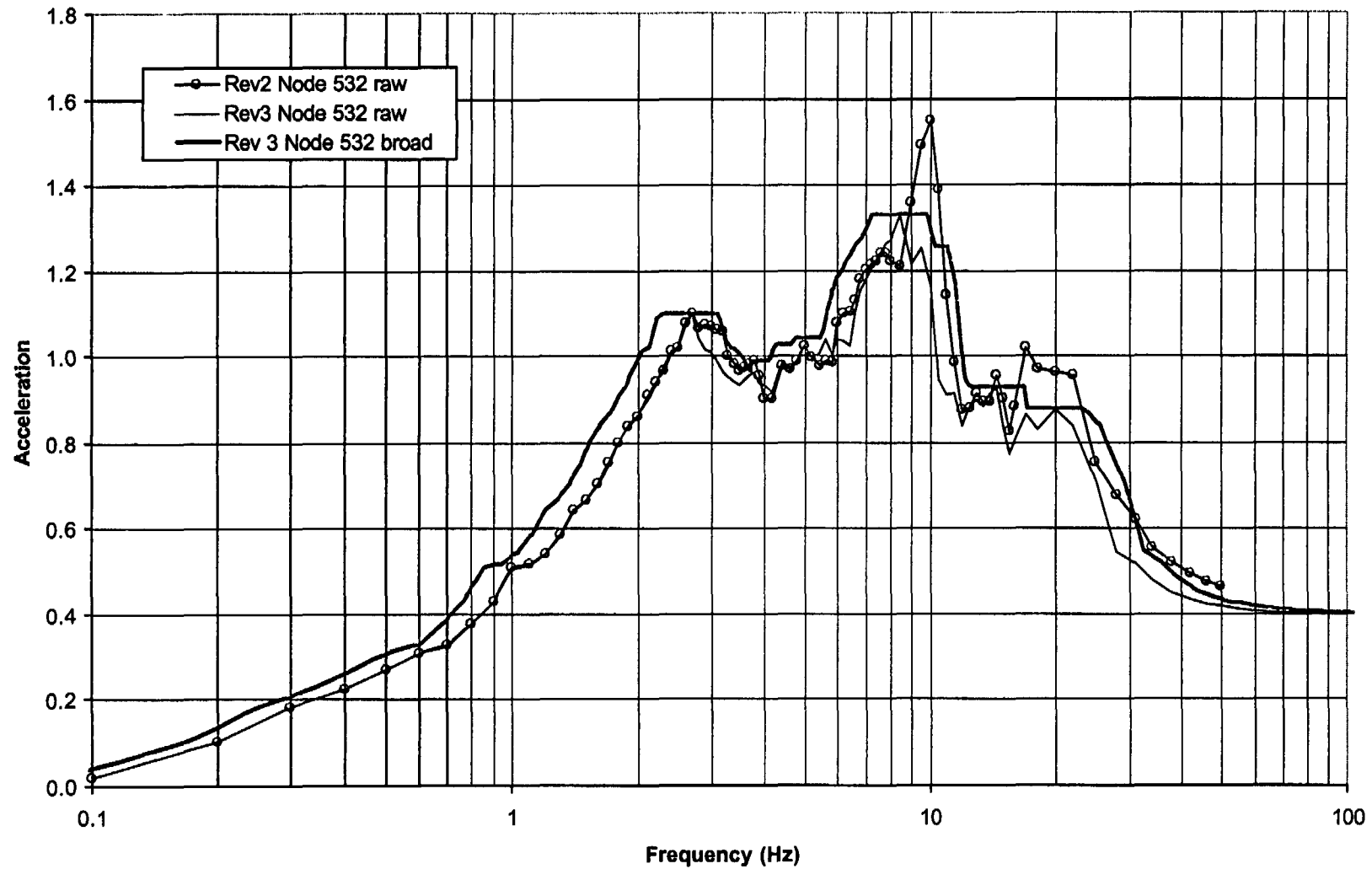
5% FRS Comparison X Direction

22 of 30



August 22, 2003

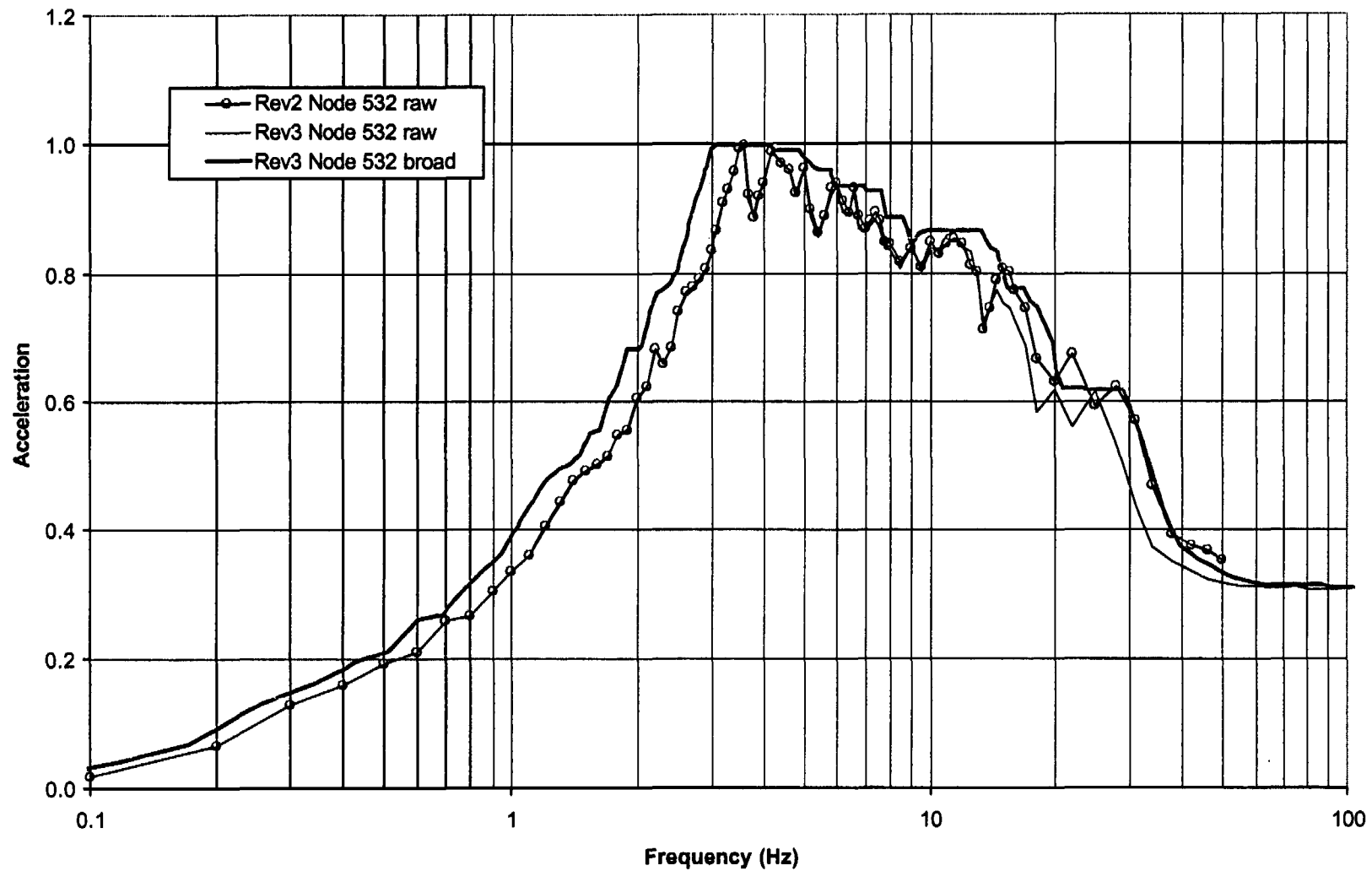
23 of 30

5% FRS Comparison Y Direction

August 22, 2003

5% FRS Comparison Z Direction

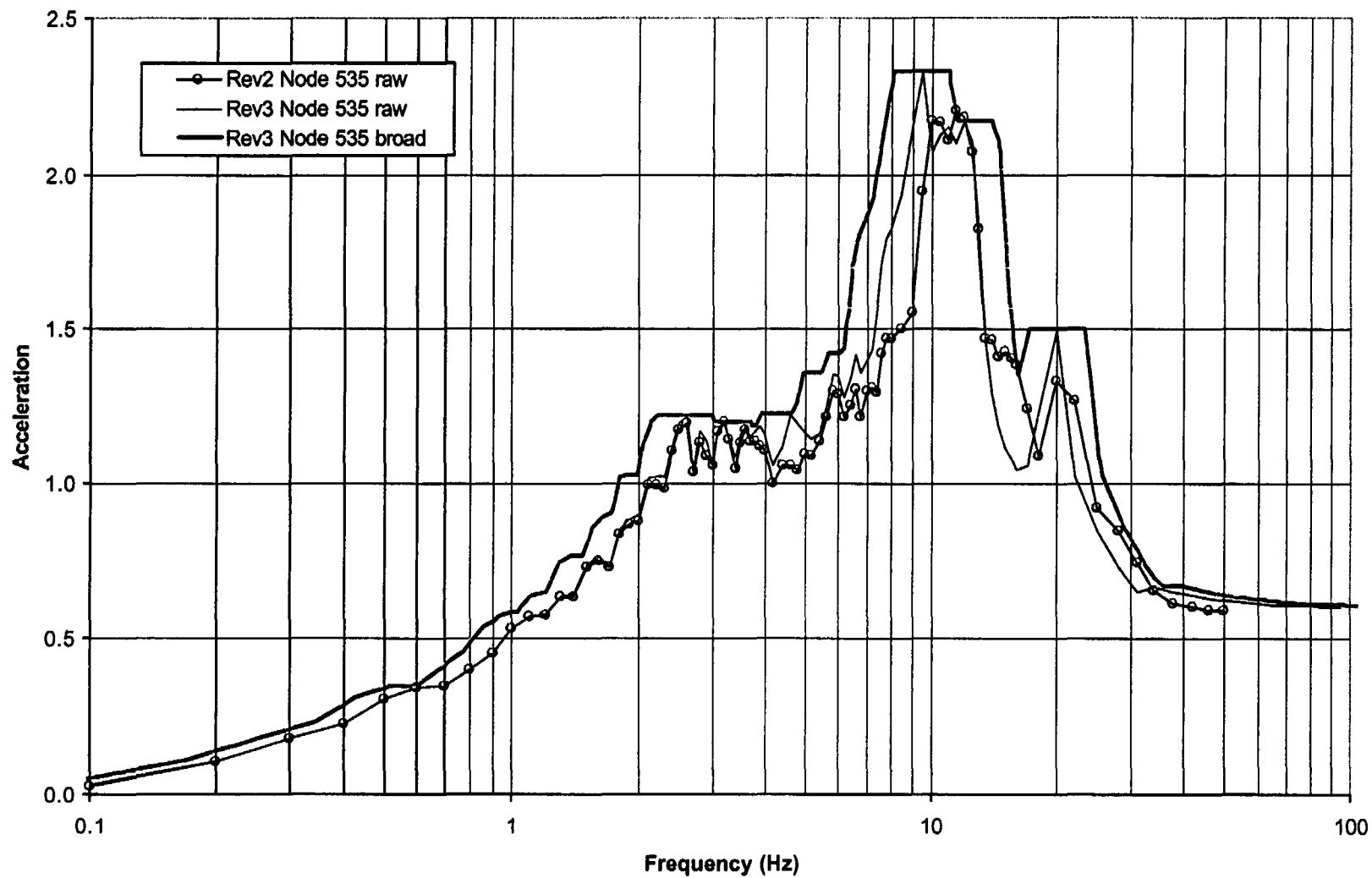
24 of 30



August 22, 2003

25 of 30

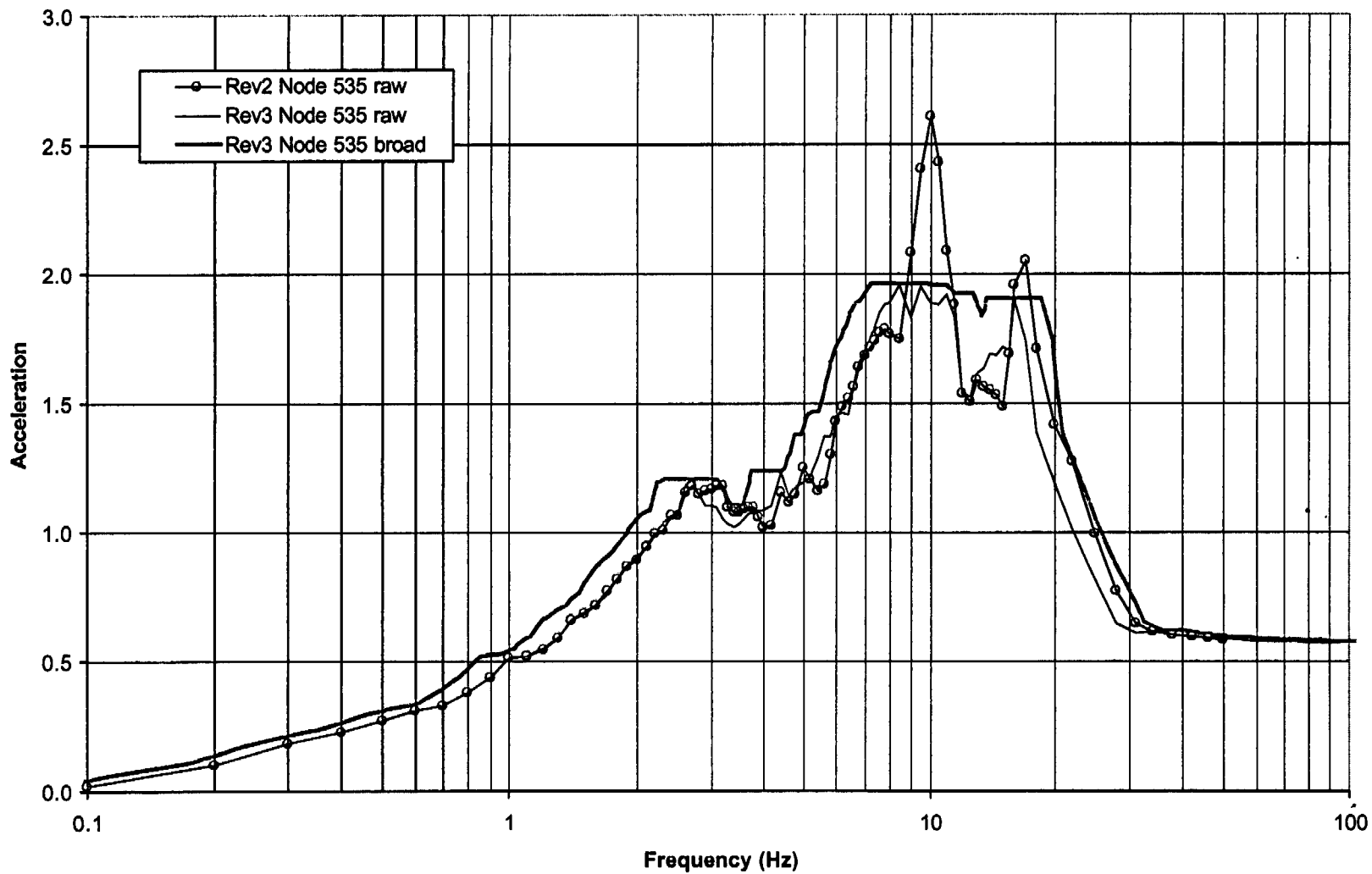
5% FRS Comparison X Direction



August 22, 2003

5% FRS Comparison Y Direction

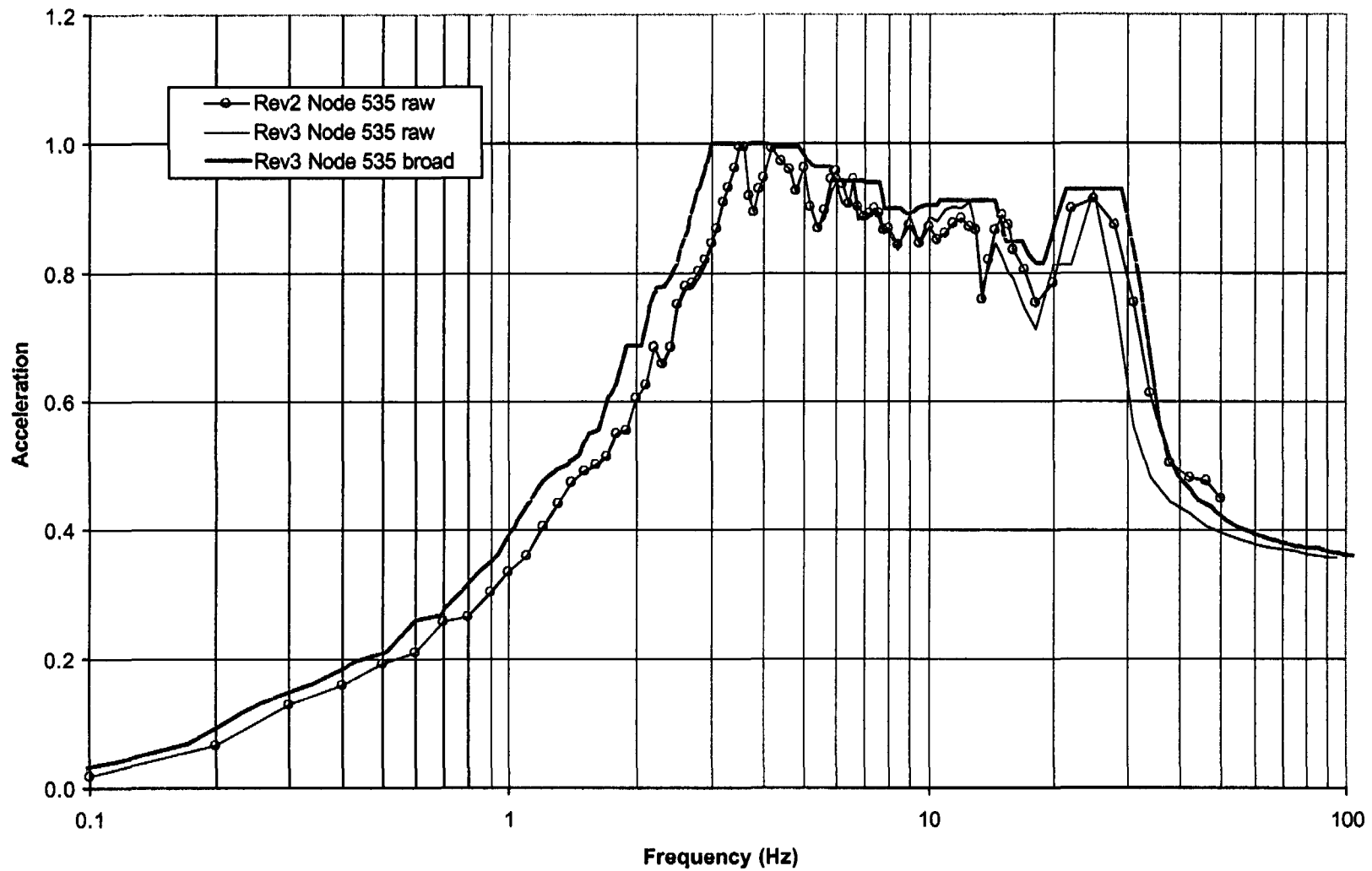
26 of 30



August 22, 2003

27 of 30

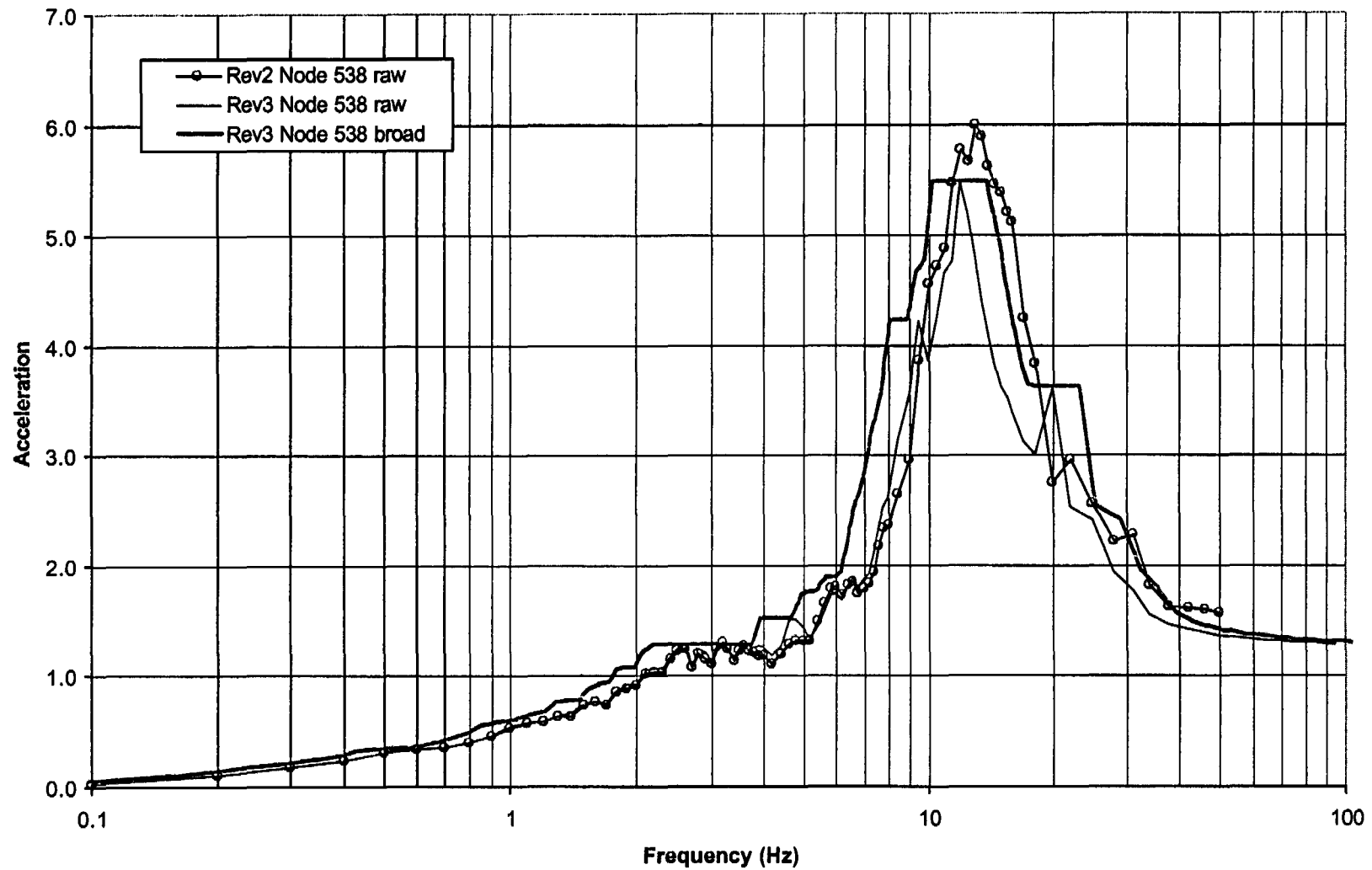
5% FRS Comparison Z Direction



August 22, 2003

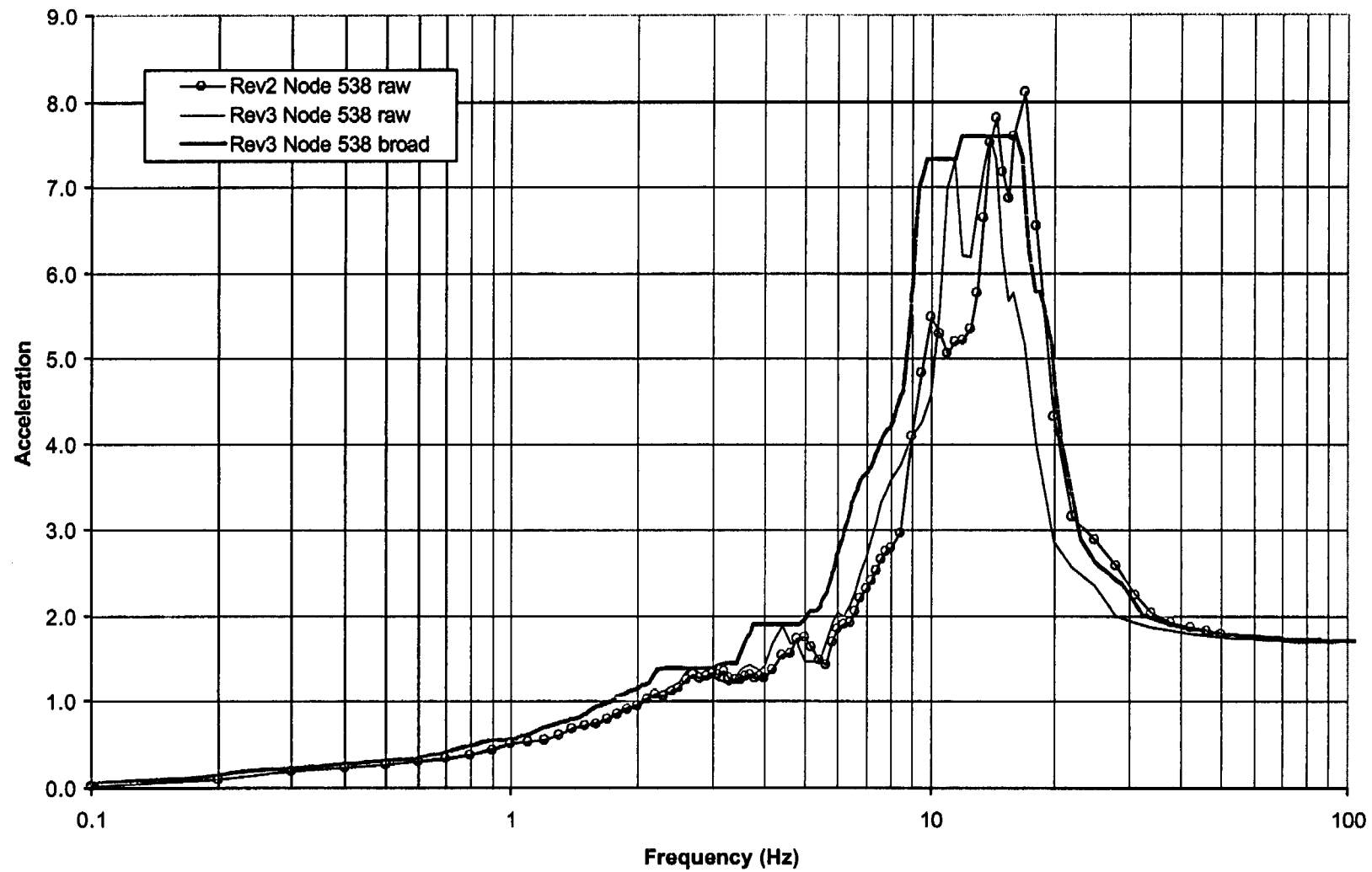
5% FRS Comparison X Direction

28 of 30



August 22, 2003

29 of 30

5% FRS Comparison Y Direction

August 22, 2003

5% FRS Comparison Z Direction

30 of 30

