

NRC/NNWSI PROJECT MANAGEMENT MEETING SUMMARY
CENTER

February 19-20, 1986

Las Vegas, Nevada
'86 FEB 26 P3:59

WM Recent File
102
Docket No. 11
PDR ✓
LPDR ✓
Distribution:
Stablein
Limehark
(Return to WM, 623-SS)
rec'd from Stablein
2/26/86

Attendees

A list of attendees and their organizational affiliations is attached as Enclosure 1.

Background/Facts

An agenda is attached as Enclosure 2. Copies of materials used during the discussions are attached as Enclosure 3.

Observations/Agreements

The NRC and NNWSI Project observations and agreements are listed below.

1. The NNWSI project appreciated the opportunity to conduct these discussions with the NRC and strongly endorses the position that such meetings should continue to be held on a quarterly basis.
2. The NRC considers that the open and frank nature of these discussions has provided the NRC with enhanced insight into the NNWSI Project's most immediate major interests and concerns into how and when various forms of NNWSI Project/NRC interactions might be of most benefit in helping to address such concerns. The NRC further considers that meetings like this should take place quarterly.
3. NRC agreed to place the NNWSI Project on a mailing list for NNWSI related documents that are placed in the NRC Public Document Room.
4. Both NRC and the NNWSI Project agreed that the utility of technical meetings anticipated for calendar year 1986 would be significantly enhanced through recognition of the need to relate the meeting schedules and topics to the Site Characterization Plan preparation process. In addition, NRC

8603310335 860221
PDR WASTE
WM-11 PDR


(F/H)
86100143 860

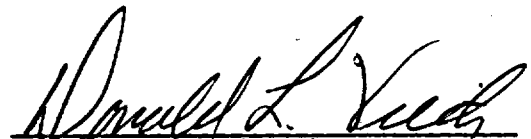
and the NNWSI Project agreed that site specific technical meetings covering Exploratory Shaft Testing, the Issues Hierarchy, Performance Allocation, Performance Assessment Seismic/Tectonics, a follow-up meeting on Exploratory Shaft Design, and Hydrology/Geology would be appropriate topics for future 1986 meetings. The potential that generic meetings may be conducted on certain of the above subjects was recognized. Discussions on the relative effectiveness of technical meetings highlighted the need for such meetings to produce agreements necessary to enable development of positions, strategies and testing plans.

5. NRC noted the need for expanded use of peer and expert review panels by the NNWSI project. The NNWSI Project recognizes this need and is pursuing the matter.
6. Extensive discussions were held on the points regarding the documentation, procedures, and storage of core raised in J. Linehan's November 18, 1985, to D. L. Vieth. Included were the criteria for admissibility as evidence in a licensing hearing, custodial approaches and precedents as used in the nuclear industry, and a general discussion of current core library practice and status. The NNWSI Project would appreciate any regulatory or precedence guidance NRC can provide in this matter.
7. Tentative agreement was reached that a presentation, by NRC QA representatives, would be made at the Technical Project Officer's meeting in Las Vegas during the week of March 24. Appendix 7 discussions relative to the core library may continue at that time.
8. The NNWSI Project agreed that Project facilities and laboratories should be open on a continuing basis to access by the NRC-OR, and personnel assigned to his staff. Necessary continuing access arrangements will be made by DOE/WMPO. NRC-OR visits to participants' facilities will be coordinated with WMPO by the OR. The NRC-OR is tentatively planning to visit LLNL early in April followed by visits to SNL and Los Alamos in May and June respectively.

9. NRC agreed to check on the status and timing of the NRC QA review of the NNWSI Project that was proposed by DOE/HQ to be conducted prior to SCP issuance.
10. The status of NNWSI Project activities subsequent to the December, 1985 Seismic/Tectonic meeting with NRC was discussed. NNWSI is looking forward to receiving NRC's input relative to the CCDF concept and definitions as agreed to in the meeting. In addition, it was noted that open items for NNWSI and NRC remain from the August Exploratory Shaft Design meeting.
11. Given the content of Section 114 of the NHPA, the NNWSI Project would appreciate any guidance the NRC can provide relative to EIS content that would facilitate "adoption" of the EIS by the Commission.
12. The NNWSI Project recently provided NRC with a copy of NNWSI-SOP-03-03 ("Acceptance of Data or Data Interpretation not developed under the NNWSI QA Plan," 1/31/86).

An alternative methodology for confirmation of data collected under other than Level I QA may involve validation of such data by a limited amount of testing conducted under more stringent QA controls. The NNWSI Project would appreciate NRC consideration of this approach including the methodology for determining the extent of verification (confirmation) testing that would be appropriate.


Newton K. Stablein
Division of Waste Management
U.S. NRC
2/21/86


Donald L. Vieth, Director
Waste Management Project Office
DOE/NV
2/21/86

Enclosure 1

**NNWSI Project/NRC Management Meeting
Las Vegas, Nevada
February 19-20, 1986**

Attendees

N. K. Stablein - NRC/NMSS
P. T. Prestholt - NRC-OR
D. L. Vieth - NNWSI/DOE
M. B. Blanchard - NNWSI/DOE
J. S. Szymanski - NNWSI/DOE
U. E. Clanton - NNWSI/DOE
James Blaylock - NNWSI/DOE
M. D. Voegele - NNWSI/SAIC
S. H. Klein - NNWSI/SAIC
Stephen Metta - NNWSI/SAIC
C. G. Pflum - NNWSI/SAIC
M. A. Gloor - NNWSI/SAIC
D. M. Dawson - NNWSI/SAIC
M. I. Foley - NNWSI/SAIC
T. A. Grant - NNWSI/SAIC

Enclosure 2

AGENDA

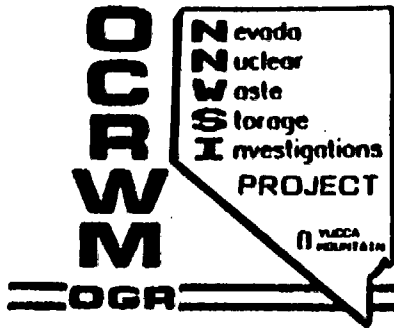
February 19-20, 1986
NNWSI Project Meeting with N. K. Stablein
Las Vegas, Nevada

<u>2/19/86</u>	<u>DOE Conference Room</u>
1:15 P.M.	Introduction & Review of Agenda
1:30 P.M.	NNWSI Project/NRC Information Exchange Status and Open Items
2:30 P.M.	NNWSI Project/NRC Interactions
3:30 P.M.	Environmental Concerns and Site Suitability Determination
4:30 P.M.	Adjourn

<u>2/20/86</u>	<u>SAIC - Room 437</u>
8:30 A.M.	Status of Seismic/Tectonic Paper & Evaluation Plans
9:45 A.M.	License Application Format & Content
10:30 A.M.	Quality Assurance & Data Confirmation
12:00 A.M.	Lunch

<u>2/20/86</u>	<u>DOE Conference Room</u>
1:00 P.M.	Site Characterization Plan Status, & Approach
3:00 P.M.	Closing Discussion and Preparation of Summary

U.S. DEPARTMENT OF ENERGY



NNWSI PROJECT PRIORITIES FY 1986

ADMINISTRATIVE/PROJECT MANAGEMENT

- COMPLETE STAFFING OF WMPO
- CREATE SEB AND ISSUE RFP FOR T&MSS CONTRACTOR
- CREATE SEB AND ISSUE RFP FOR A&E
- COMPLETE REVIEW AND ISSUE GRANT TO STATE
- COMPLETE PREPARATION OF FY 1988 WPAS AND BUDGET REVIEW
- GET USGS SITUATION RESOLVED AND WORKING SMOOTHLY
- GET RECORDS MANAGEMENT SYSTEM FULLY OPERATIONAL
- IMPLEMENT PERFORMANCE MEASUREMENT SYSTEM
- COMPLETE AND ISSUE PROJECT MANAGEMENT PLAN

**OC
RW
M**

Nevada
Nuclear
Waste
Storage
Investigations
PROJECT

YUCCA
MOUNTAIN

NNWSI PROJECT PRIORITIES FY 1986

CONTINUED

REGULATORY

- **UPGRADE QA PROGRAM TO MEET NRC REQUIREMENTS AND EXPECTATIONS**
- **COMPLETE, IN SUCCESSFUL FASHION, QA AUDIT OF PROJECT BY NRC**
- **COMPLETE 6 WORKSHOPS WITH NRC**
- **COMPLETE SEISMIC/TECTONIC POSITION PAPER**
- **RESOLVE ISSUES IDENTIFIED DURING EXPLORATORY SHAFT DESIGN WORKSHOP**

PROGRAMMATIC

- **FULLY IMPLEMENT CONFIGURATION MANAGEMENT CONTROLS**
- **COMPLETE AND IMPLEMENT SEMP**
- **COMPLETE AND ISSUE WASTE PACKAGE POST EMPLACEMENT COMPLIANCE STRATEGY**
- **COMPLETE AND ISSUE WASTE PACKAGE DEVELOPMENT PLAN**
- **COMPLETE PREPARATION OF COPPER REPORT FOR CONGRESS**
- **REVISE AND COMPLETE WASTE PACKAGE SPECIFICATION**

**O
C
R
W
M**

Nevada
Nuclear
Waste
Storage
Investigations
PROJECT

**YUCCA
MOUNTAIN**

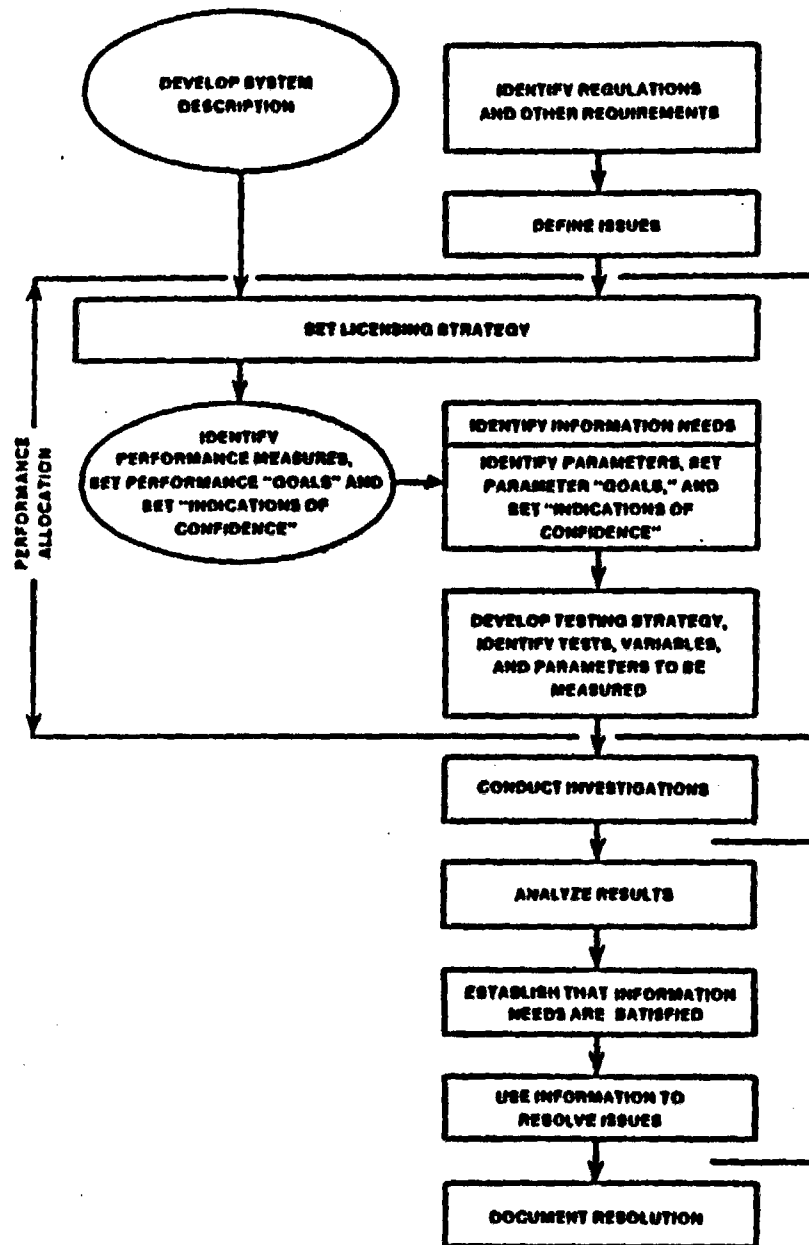
NNWSI PROJECT PRIORITIES FY 1986

CONTINUED

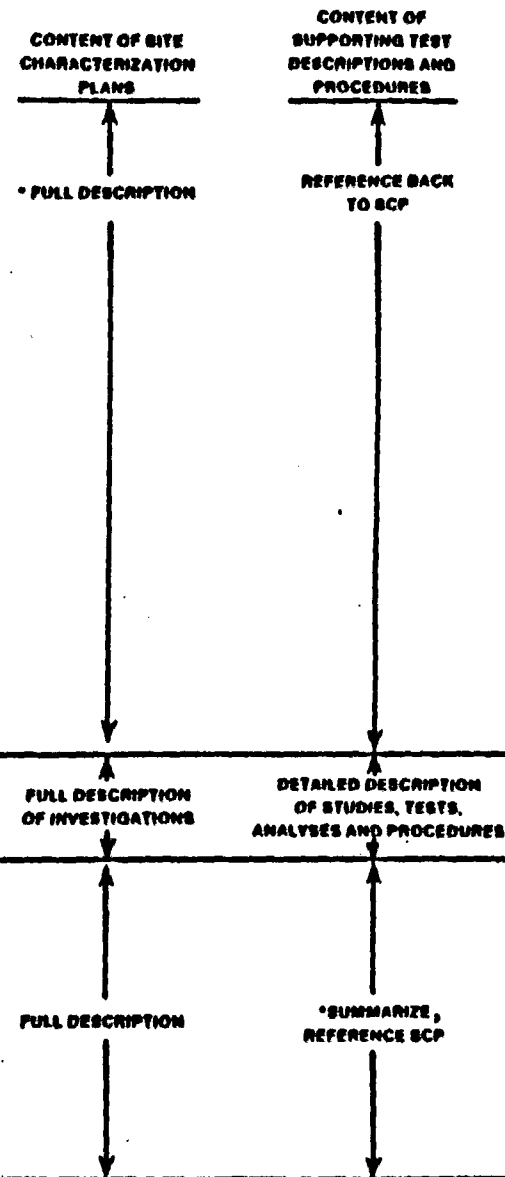
PROGRAMMATIC

- **RESOLVE ISSUE RELATING TO CANDIDATE ALLOYS FOR WASTE PACKAGE**
- **INITIATE ADVANCED CONCEPTUAL DESIGN OF WASTE PACKAGE**
- **COMPLETE SCP CONCEPTUAL DESIGN REPORT**
- **COMPLETE REPOSITORY SUBSYSTEM DESIGN REQUIREMENTS**
- **INITIATE REPOSITORY ADVANCED CONCEPTUAL DESIGN**
- **FINALIZE ISSUES HIERARCHY**
- **IMPLEMENT PERFORMANCE ALLOCATION**
- **PREPARE SCP WITH OBJECTIVE OF DECEMBER RELEASE**
- **COMPLETE EXPLORATORY SHAFT DEFINITION (TITLE II) DESIGN REPORT**
- **COMPLETE AND ISSUE EXPLORATORY SHAFT BID PACKAGE**
- **MAKE DECISION ON CORE LIBRARY AND RESOLVE CORE HANDLING PROBLEMS**
- **COMPLETE EEMP AND ISSUE ASAP AFTER PRESIDENTIAL APPROVAL OF SITE RECOMMENDATION**
- **SUPPORT EIS SCOPING HEARINGS IN NEVADA**
- **COMPLETE EA AND ISSUE PER GUIDANCE OGR**

COMMON ISSUE RESOLUTION



LEVEL OF DETAIL



* LEVEL OF INFORMATION PRESENTED IN THIS SCP WILL BE BASED ON DATA AVAILABLE AT EACH PROJECT AT THE TIME OF SCP PREPARATION. LEVEL OF INFORMATION EXPECTED TO VARY AMONG PROJECTS DUE TO DIFFERING STATUS OF PROJECT STUDIES.

PERFORMANCE ALLOCATION

[illegible]

SCP SCHEDULE

CHAPTER/ SECTION	DRAFT INPUT	INTERNAL DISTR.	REVIEW MTG.	CRP 1		HQ REVIEW DISTR. MTG.		CRP 2
2	DONE	DONE	DONE	DONE	DONE	DONE	DONE	STARTED - 2/
8.6	DONE	DONE	DONE	STARTED	2/21	2/24	3/5	3/10 - 4/2
- 4	DONE	DONE	DONE	STARTED	2/21	2/24	3/6-7	3/10 - 4/2
7	DONE	DONE	DONE	STARTED	3/28	3/31	4/10-11	4/14 - 6/6
5	1/17	2/3	2/14	2/17 -	3/28	3/31	4/9	4/14 - 6/6
8.1, 8.2	2/28	3/10	3/20-21*	3/24 -	5/2	5/5	5/15-16	5/19 - 6/2
8.3.5	3/3	3/17	4/1-2	4/3 -	5/2	5/5	5/14	5/19 - 6/2
6	DONE	DONE	DONE	STARTED	5/23	5/26	6/5-6	6/9 - 7/1
8.4, 8.7	3/28	4/21	4/29-30	5/5 -	6/6	6/9	6/18	6/23 - 8/1
3	4/11	4/21	5/1-2	5/5 -	6/6	6/9	6/19-20	6/23 - 8/1
1	5/2	5/19	5/27-29	6/2 -	8/1			
8.3.4	5/2	5/19	5/27-29	6/2 -	8/1			
8.3.2, 8.3.3	5/2	5/19	5/28-30	6/2 -	8/1			
8.3.1, 8.5	6/2	6/16	6/24-27	6/30 -	8/8			
TOTAL DOCUMENT CONSOLIDATION				8/4	-	8/8		
HQ/INTERNAL REVIEWS IN L.V. AND								
COMMENT CLARIFICATION & CONSOLIDATION				8/11	-	8/22		
COMMENT RESOLUTION				8/25	-	9/12		
HQ APPROVAL OF DRAFT CONSOLIDATED								
COMMENT COPY IN L.V.								
PRODUCTION				9/15	-	10/3		
HQ CONCURRENCE				10/6	-	10/10		
FINAL CAMERA READY PRODUCTION				10/13	-	11/21/86		
FINAL REPRODUCTION				11/24	-	12/19/86		
DELIVERY TO NRC				12/22/86				

* TPO REVIEW

U.S. DEPARTMENT OF ENERGY

**W
R
O
O
M**

Nevada
Nuclear
Waste
Storage
Investigations
PROJECT

**YUCCA
MOUNTAIN**

DATA ACCEPTANCE EXAMPLE

**GROUND WATER FLOW (GPM) AT 500 FT
TEST HOLE 322E**

SEASONAL GROUND WATER FLOW VARIATION

