

# WARNING LABELS

NOTE: LABELS ARE MOUNTED ON OUTBOARD SIDE OF GAUGE.

# HOFFMAN ENCLOSURE

# LIGHTS


# RECEIVER HEAD

# AIR GAP

# SIGHT GLASS

# RADIATION SOURCE

# GAUGE

REV	DATE	BY	REASON	FOR	REVISION
1	10/10/83	WALSH	REVISION	1	1
GAMMA GAUGE ILLUSTRATION					
				INTERGRATED INDUSTRIAL SYSTEMS 475 MAIN STREET WALTHAM, CONNECTICUT 06107 TEL: 617/440-6000	
10/10/83 10/10/83 10/10/83				100-680 A	

DEC 21 1993

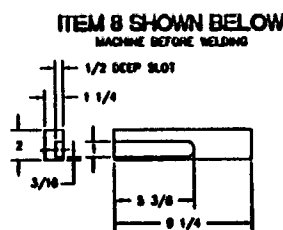
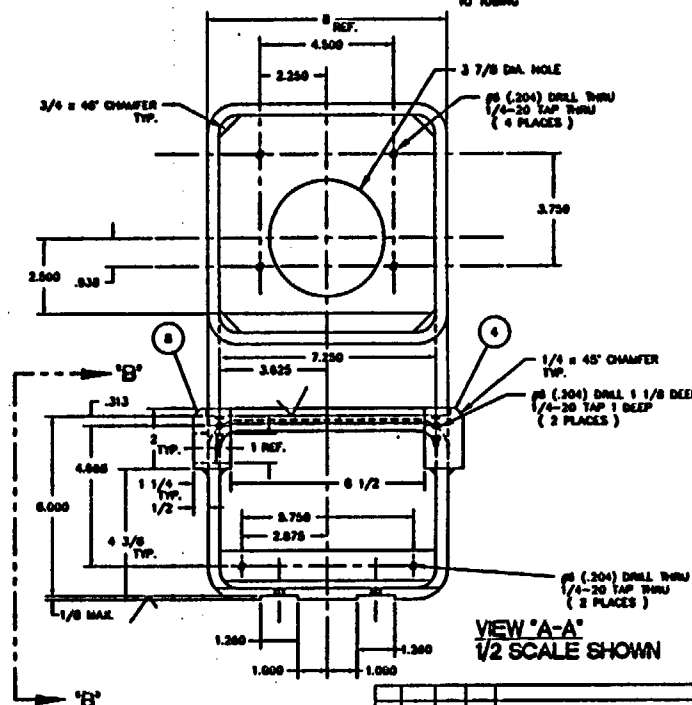
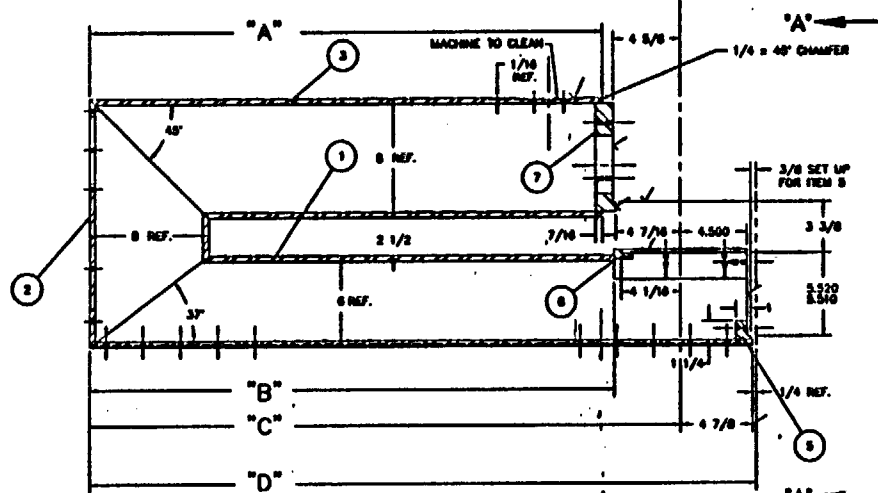
VIEW "B-B"  
1/4 SCALE

1.000

0.375 DIA. THRU  
1.000/1.002 REAM

4.438

PRE-MACHINE SLOT  
PUGH TO WELDING  
TO TURNING

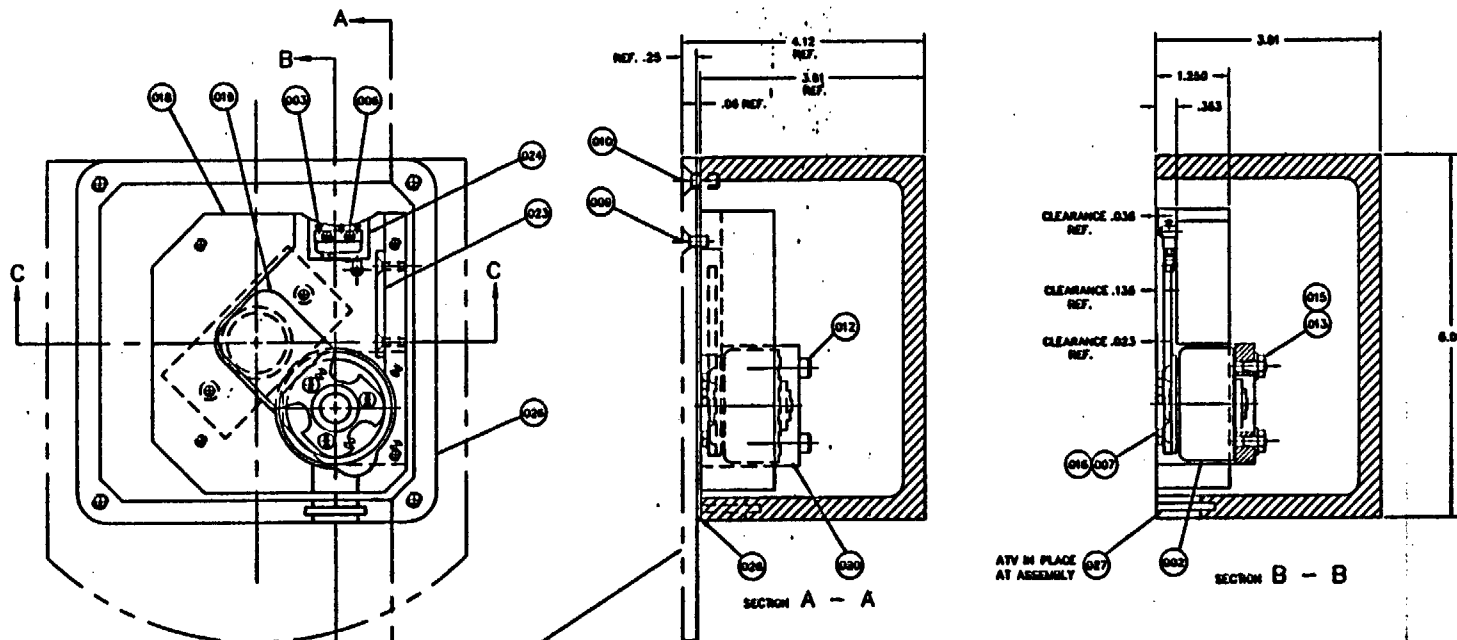
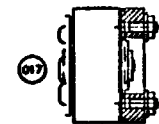


DEC 21 1993

NOTES:  
1.) C-FRAME TO HAVE ALL CONTINUOUS ( AIR-DRY ) WELDS  
2.) MAX. TOOL RADIUS 1/32  
3.) 125 FINISH WHERE INDICATED  
4.) RUBBING SEAM TO BE WELDED TOWARDS THROAT AREA.

METRIC EQUIVALENT P/N 300-701		MACHINING DATA	
INTEGRATED INDUSTRIAL SYSTEMS		(UNLESS OTHERWISE SPECIFIED)	
PART NUMBER	REVISION	REFERENCE	DATE
SEE ABOVE 816-FRAME			
QUANTITY	MATERIAL	SHEET NO.	TOTAL SHEETS
TABLE	BIG BIRD 616HR 373	10/1/77	10/1/77
REMARKS 1			

[illegible]

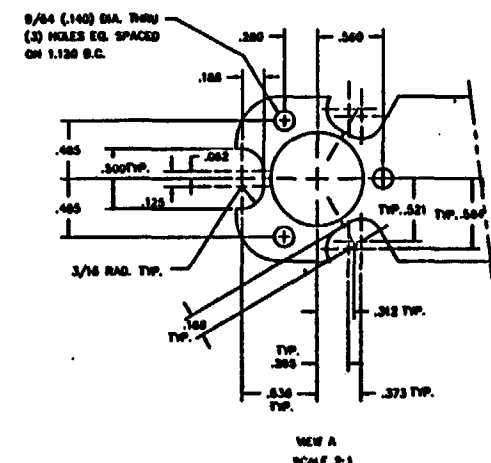
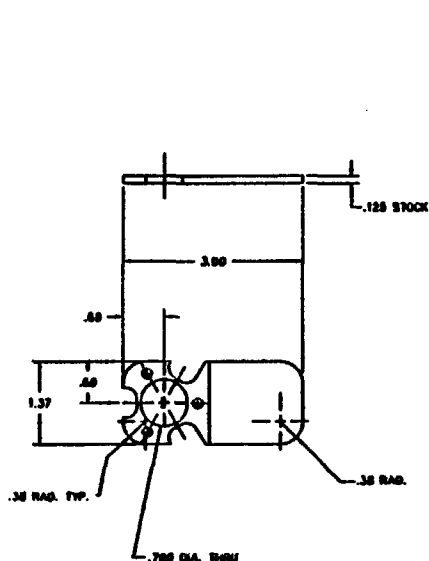


FOR SOURCE HOUSING TOP COVER AND  
TARGET HOLDER ASSEMBLY  
SEE DRAWING 300-864  
NOTE: ATV TOP COVER IN PLACE  
AT ASSEMBLY

S.S.M. TITLE : SOURCE HOUSING SHUTTER ASSEMBLY				S.S.M. # : 300-860				PAGE 1 OF 2			
CUSTOMER :				S.S.M. REV. NO. :				SHOTS REQ. : 1			
RELEASED BY :				RELEASED DATE :				JOB NO. :			
NO. PART NO.				DESCRIPTION				REMARKS			
001	CLPE 441-10	1		SOURCE HOUSING SHUTTER ASSEMBLY							
002	CSK 100-340-001	1		ROTARY SLIDE SHUTTER H.B. 11100-340-001							
003	CSW 11100-7	1		INTERNAL LEAF SHUTTER H.B. 11100-7							
004	USDR 11100-013	1		TANK SPRING SHUTTER ASSOC. SPRING/11100-013							
005	PPHSC 0-3000-43	3		PIN HEAD SCREW 0-3000-43 1/8" x 7/16"							
006	PPHSC 0-3000-43	3		PIN HEAD SCREW 0-3000-43 1/8" x 7/16"							
007	PPHSC 0-3000-43	3		PIN HEAD SCREW 0-3000-43 1/8" x 7/16"							
008	PPHSC 10-3000-43	4		FLAT HEAD SCREW 10-3000-43 1/4" x 5/8"							
009	PPHSC 10-3000-43	4		FLAT HEAD SCREW 10-3000-43 1/4" x 5/8"							
010	PPHSC 10-3000-43	4		FLAT HEAD SCREW 10-3000-43 1/4" x 5/8"							
011	PPHSC 10-3000-43	4		FLAT HEAD SCREW 10-3000-43 1/4" x 5/8"							
012	PPHSC 10-3000-43	4		FLAT HEAD SCREW 10-3000-43 1/4" x 5/8"							
013	PPHSC 10-3000-43	4		FLAT HEAD SCREW 10-3000-43 1/4" x 5/8"							
014	PPHSC 10-3000-43	4		FLAT HEAD SCREW 10-3000-43 1/4" x 5/8"							
015	PPHSC 10-3000-43	4		FLAT HEAD SCREW 10-3000-43 1/4" x 5/8"							
016	PPHSC 10-3000-43	4		FLAT HEAD SCREW 10-3000-43 1/4" x 5/8"							
017	PPHSC 10-3000-43	4		FLAT HEAD SCREW 10-3000-43 1/4" x 5/8"							
018	PPHSC 10-3000-43	4		FLAT HEAD SCREW 10-3000-43 1/4" x 5/8"							
019	PPHSC 10-3000-43	4		FLAT HEAD SCREW 10-3000-43 1/4" x 5/8"							
020	PPHSC 10-3000-43	4		FLAT HEAD SCREW 10-3000-43 1/4" x 5/8"							
021	PPHSC 10-3000-43	4		FLAT HEAD SCREW 10-3000-43 1/4" x 5/8"							
022	PPHSC 10-3000-43	4		FLAT HEAD SCREW 10-3000-43 1/4" x 5/8"							
023	PPHSC 10-3000-43	4		FLAT HEAD SCREW 10-3000-43 1/4" x 5/8"							
024	PPHSC 10-3000-43	4		FLAT HEAD SCREW 10-3000-43 1/4" x 5/8"							
025	PPHSC 10-3000-43	4		FLAT HEAD SCREW 10-3000-43 1/4" x 5/8"							
026	PPHSC 10-3000-43	4		FLAT HEAD SCREW 10-3000-43 1/4" x 5/8"							
027	PPHSC 10-3000-43	4		FLAT HEAD SCREW 10-3000-43 1/4" x 5/8"							
028	PPHSC 10-3000-43	4		FLAT HEAD SCREW 10-3000-43 1/4" x 5/8"							
029	PPHSC 10-3000-43	4		FLAT HEAD SCREW 10-3000-43 1/4" x 5/8"							
030	PPHSC 10-3000-43	4		FLAT HEAD SCREW 10-3000-43 1/4" x 5/8"							
031	PPHSC 10-3000-43	4		FLAT HEAD SCREW 10-3000-43 1/4" x 5/8"							
032	PPHSC 10-3000-43	4		FLAT HEAD SCREW 10-3000-43 1/4" x 5/8"							
033	PPHSC 10-3000-43	4		FLAT HEAD SCREW 10-3000-43 1/4" x 5/8"							
034	PPHSC 10-3000-43	4		FLAT HEAD SCREW 10-3000-43 1/4" x 5/8"							
035	PPHSC 10-3000-43	4		FLAT HEAD SCREW 10-3000-43 1/4" x 5/8"							
036	PPHSC 10-3000-43	4		FLAT HEAD SCREW 10-3000-43 1/4" x 5/8"							
037	PPHSC 10-3000-43	4		FLAT HEAD SCREW 10-3000-43 1/4" x 5/8"							
038	PPHSC 10-3000-43	4		FLAT HEAD SCREW 10-3000-43 1/4" x 5/8"							
039	PPHSC 10-3000-43	4		FLAT HEAD SCREW 10-3000-43 1/4" x 5/8"							
040	PPHSC 10-3000-43	4		FLAT HEAD SCREW 10-3000-43 1/4" x 5/8"							
041	PPHSC 10-3000-43	4		FLAT HEAD SCREW 10-3000-43 1/4" x 5/8"							
042	PPHSC 10-3000-43	4		FLAT HEAD SCREW 10-3000-43 1/4" x 5/8"							
043	PPHSC 10-3000-43	4		FLAT HEAD SCREW 10-3000-43 1/4" x 5/8"							
044	PPHSC 10-3000-43	4		FLAT HEAD SCREW 10-3000-43 1/4" x 5/8"							
045	PPHSC 10-3000-43	4		FLAT HEAD SCREW 10-3000-43 1/4" x 5/8"							
046	PPHSC 10-3000-43	4		FLAT HEAD SCREW 10-3000-43 1/4" x 5/8"							
047	PPHSC 10-3000-43	4		FLAT HEAD SCREW 10-3000-43 1/4" x 5/8"							
048	PPHSC 10-3000-43	4		FLAT HEAD SCREW 10-3000-43 1/4" x 5/8"							
049	PPHSC 10-3000-43	4		FLAT HEAD SCREW 10-3000-43 1/4" x 5/8"							
050	PPHSC 10-3000-43	4		FLAT HEAD SCREW 10-3000-43 1/4" x 5/8"							
051	PPHSC 10-3000-43	4		FLAT HEAD SCREW 10-3000-43 1/4" x 5/8"							
052	PPHSC 10-3000-43	4		FLAT HEAD SCREW 10-3000-43 1/4" x 5/8"							
053	PPHSC 10-3000-43	4		FLAT HEAD SCREW 10-3000-43 1/4" x 5/8"							
054	PPHSC 10-3000-43	4		FLAT HEAD SCREW 10-3000-43 1/4" x 5/8"							
055	PPHSC 10-3000-43	4		FLAT HEAD SCREW 10-3000-43 1/4" x 5/8"							
056	PPHSC 10-3000-43	4		FLAT HEAD SCREW 10-3000-43 1/4" x 5/8"							
057	PPHSC 10-3000-43	4		FLAT HEAD SCREW 10-3000-43 1/4" x 5/8"							
058	PPHSC 10-3000-43	4		FLAT HEAD SCREW 10-3000-43 1/4" x 5/8"							
059	PPHSC 10-3000-43	4		FLAT HEAD SCREW 10-3000-43 1/4" x 5/8"							
060	PPHSC 10-3000-43	4		FLAT HEAD SCREW 10-3000-43 1/4" x 5/8"							
061	PPHSC 10-3000-43	4		FLAT HEAD SCREW 10-3000-43 1/4" x 5/8"							
062	PPHSC 10-3000-43	4		FLAT HEAD SCREW 10-3000-43 1/4" x 5/8"							
063	PPHSC 10-3000-43	4		FLAT HEAD SCREW 10-3000-43 1/4" x 5/8"							
064	PPHSC 10-3000-43	4		FLAT HEAD SCREW 10-3000-43 1/4" x 5/8"							
065	PPHSC 10-3000-43	4		FLAT HEAD SCREW 10-3000-43 1/4" x 5/8"							
066	PPHSC 10-3000-43	4		FLAT HEAD SCREW 10-3000-43 1/4" x 5/8"							
067	PPHSC 10-3000-43	4		FLAT HEAD SCREW 10-3000-43 1/4" x 5/8"							
068	PPHSC 10-3000-43	4		FLAT HEAD SCREW 10-3000-43 1/4" x 5/8"							
069	PPHSC 10-3000-43	4		FLAT HEAD SCREW 10-3000-43 1/4" x 5/8"							
070	PPHSC 10-3000-43	4		FLAT HEAD SCREW 10-3000-43 1/4" x 5/8"							
071	PPHSC 10-3000-43	4		FLAT HEAD SCREW 10-3000-43 1/4" x 5/8"							
072	PPHSC 10-3000-43	4		FLAT HEAD SCREW 10-3000-43 1/4" x 5/8"							
073	PPHSC 10-3000-43	4		FLAT HEAD SCREW 10-3000-43 1/4" x 5/8"							
074	PPHSC 10-3000-43	4		FLAT HEAD SCREW 10-3000-43 1/4" x 5/8"							
075	PPHSC 10-3000-43	4		FLAT HEAD SCREW 10-3000-43 1/4" x 5/8"							
076	PPHSC 10-3000-43	4		FLAT HEAD SCREW 10-3000-43 1/4" x 5/8"							
077	PPHSC 10-3000-43	4		FLAT HEAD SCREW 10-3000-43 1/4" x 5/8"							
078	PPHSC 10-3000-43	4		FLAT HEAD SCREW 10-3000-43 1/4" x 5/8"							
079	PPHSC 10-3000-43	4		FLAT HEAD SCREW 10-3000-43 1/4" x 5/8"							
080	PPHSC 10-3000-43	4		FLAT HEAD SCREW 10-3000-43 1/4" x 5/8"							
081	PPHSC 10-3000-43	4		FLAT HEAD SCREW 10-3000-43 1/4" x 5/8"							
082	PPHSC 10-3000-43	4		FLAT HEAD SCREW 10-3000-43 1/4" x 5/8"							
083	PPHSC 10-3000-43	4		FLAT HEAD SCREW 10-3000-43 1/4" x 5/8"							
084	PPHSC 10-3000-43	4		FLAT HEAD SCREW 10-3000-43 1/4" x 5/8"							
085	PPHSC 10-3000-43	4		FLAT HEAD SCREW 10-3000-43 1/4" x 5/8"							
086	PPHSC 10-3000-43	4		FLAT HEAD SCREW 10-3000-43 1/4" x 5/8"							
087	PPHSC 10-3000-43	4		FLAT HEAD SCREW 10-3000-43 1/4" x 5/8"							
088	PPHSC 10-3000-43	4		FLAT HEAD SCREW 10-3000-43 1/4" x 5/8"							
089	PPHSC 10-3000-43	4		FLAT HEAD SCREW 10-3000-43 1/4" x 5/8"							
090	PPHSC 10-3000-43	4		FLAT HEAD SCREW 10-3000-43 1/4" x 5/8"							
091	PPHSC 10-3000-43	4		FLAT HEAD SCREW 10-3000-43 1/4" x 5/8"							
092	PPHSC 10-3000-43	4		FLAT HEAD SCREW 10-3000-43 1/4" x 5/8"							
093	PPHSC 10-3000-43	4		FLAT HEAD SCREW 10-3000-43 1/4" x 5/8"							
094	PPHSC 10-3000-43	4		FLAT HEAD SCREW 10-3000-43 1/4" x 5/8"							
095	PPHSC 10-3000-43	4		FLAT HEAD SCREW 10-3000-43 1/4" x 5/8"							
096	PPHSC 10-3000-43	4		FLAT HEAD SCREW 10-3000-43 1/4" x 5/8"							
097	PPHSC 10-3000-43	4		FLAT HEAD SCREW 10-3000-43 1/4" x 5/8"							
098	PPHSC 10-3000-43	4		FLAT HEAD SCREW 10-3000-43 1/4" x 5/8"							
099	PPHSC 10-3000-43	4		FLAT HEAD SCREW 10-3000-43 1/4" x 5/8"							
100	PPHSC 10-3000-43	4		FLAT HEAD SCREW 10-3000-43 1/4" x 5/8"							
101	PPHSC 10-3000-43	4		FLAT HEAD SCREW 10-3000-43 1/4" x 5/8"							
102	PPHSC 10-3000-43	4		FLAT HEAD SCREW 10-3000-43 1/4" x 5/8"							
103	PPHSC 10-3000-43	4		FLAT HEAD SCREW 10-3000-43 1/4" x 5/8"							
104	PPHSC 10-3000-43	4		FLAT HEAD SCREW 10-3000-43 1/4" x 5/8"							
105	PPHSC 10-3000-43	4		FLAT HEAD SCREW 10-3000-43 1/4" x 5/8"							
106	PPHSC 10-3000-43	4		FLAT HEAD SCREW 10-3000-43 1/4" x 5/8"							
107	PPHSC 10-3000-43	4		FLAT HEAD SCREW 10-3000-43 1/4" x 5/8"							
108	PPHSC 10-3000-43	4		FLAT HEAD SCREW 10-3000-43 1/4" x 5/8"							
109	PPHSC 10-3000-43	4		FLAT HEAD SCREW 10-3000-43 1/4" x 5/8"							
110	PPHSC 10-3000-43	4		FLAT HEAD SCREW 10-3000-43 1/4" x 5/8"							
111	PPHSC 10-3000-43	4		FLAT HEAD SCREW 10-3000-43 1/4" x 5/8"							
112	PPHSC 10-3000-43	4		FLAT HEAD SCREW 10-3000-43 1/4" x 5/8"							
113	PPHSC 10-3000-43	4		FLAT HEAD SCREW 10-3000-43 1/4" x 5/8"							
114	PPHSC 10-3000-43	4		FLAT HEAD SCREW 10-3000-43 1/4" x 5/8"							
115	PPHSC 10-3000-43	4		FLAT HEAD SCREW 10-3000-43 1/4" x 5/8"							
116	PPHSC 10-3000-43	4		FLAT HEAD SCREW 10-3000-43 1/4" x 5/8"							
117	PPHSC 10-3000-43	4		FLAT HEAD SCREW 10-3000-43 1/4" x 5/8"							
118	PPHSC 10-3000-43	4		FLAT HEAD SCREW 10-3000-43 1/4" x 5/8"							
119	PPHSC 10-3000-43	4		FLAT HEAD SCREW 10-3000-43 1/4" x 5/8"							
120	PPHSC 10-3000-43	4		FLAT HEAD SCREW 10-3000-43 1/4" x 5/8"							
121	PPHSC 10-3000-43	4		FLAT HEAD SCREW 10-3000-43 1/4" x 5/8"							
122	PPHSC 10-3000-43	4		FLAT HEAD SCREW 10-3000-43 1/4" x 5/8"							
123	PPHSC 10-3000-43	4		FLAT HEAD SCREW 10-3000-43 1/4" x 5/8"							
124	PPHSC 10-3000-43	4		FLAT HEAD SCREW 10-3000-43 1/4" x 5/8"							
125	PPHSC 10-3000-43	4		FLAT HEAD SCREW 10-3000-43 1/4" x 5/8"							
126	PPHSC 10-3000-43	4		FLAT HEAD SCREW 10-3000-43 1/4" x 5/8"							
127	PPHSC 10-3000-43	4		FLAT HEAD SCREW 10-3000-43 1/4" x 5/8"							
128	PPHSC 10-3000-43	4		FLAT HEAD SCREW 10-3000-43 1/4" x 5/8"							
129	PPHSC 10-3000-43	4		FLAT HEAD SCREW 10-3000-43 1/4" x 5/8"							
130	PPHSC 10-3000-43	4		FLAT HEAD SCREW 10-3000-43 1/4" x 5/8"							
131	PPHSC 10-3000-43	4		FLAT HEAD SCREW 10-3000-43 1/4" x 5/8"							
132	PPHSC 10-3000-43	4		FLAT HEAD SCREW 10-3000-43 1/4" x 5/8"							
133	PPHSC 10-3000-43	4		FLAT HEAD SCREW 10-3000-43 1/4" x 5/8"							
134	PPHSC 10-3000-43	4		FLAT HEAD SCREW 10-3000-43 1/4" x 5/8"							
135	PPHSC 10-3000-43	4		FLAT HEAD SCREW 10-3000-43 1/4" x 5/8"							
136	PPHSC 10-3000-43	4		FLAT HEAD SCREW 10-3000-43 1/4" x 5/8"							
137	PPHSC 10-3000-43	4		FLAT HEAD SCREW 10-3000-43 1/4" x 5/8"							
138	PPHSC 10-3000-43	4		FLAT HEAD SCREW 10-3000-43 1/4" x 5/8"							
139	PPHSC 10-3000-43	4		FLAT HEAD SCREW 10-3000-43 1/4" x 5/8"							
140	PPHSC 10-3000-43	4		FLAT HEAD SCREW 10-3000-43 1/4" x 5/8"							
141	PPHSC 10-3000-43	4		FLAT HEAD SCREW 10-3000-43 1/4" x 5/8"							
142	PPHSC 10-3000-43	4		FLAT HEAD SCREW 10-3000-43 1/4" x 5/8"							
143	PPHSC 10-3000-43	4		FLAT HEAD SCREW 10-3000-43 1/4" x 5/8"							
144	PPHSC 10-3000-43	4		FLAT HEAD SCREW 10-3000-43 1/4" x 5/8"							
145	PPHSC 10-3000-43	4		FLAT HEAD SCREW 10-3000-43 1/4" x 5/8"							
146	PPHSC 10-3000-43	4		FLAT HEAD SCREW 10-3000-43 1/4" x 5/8"							
147	PPHSC 10-3000-43	4		FLAT HEAD SCREW 10-3000-43 1/4" x 5/8"							
148	PPHSC 10-3000-43	4		FLAT HEAD SCREW 10-3000-43 1/4" x 5/8"							
149	PPHSC 10-3000-43	4		FLAT HEAD SCREW 10-3000-43 1/4" x 5/8"							
150	PPHSC 10-3000-43										

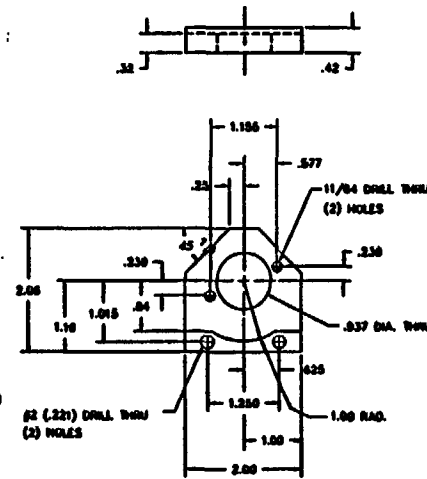
DEC 21 1993

DEC 21 1993



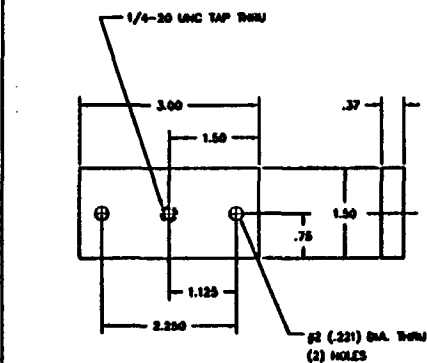
FINISH ALL OVER  
REMOVE ALL SHARP EDGES

INTERGRADED INDUSTRIAL SYSTEMS		SCALE: FULL	MACHINING DATA	
PART NUMBER	REV.	DESCRIPTION	DATE	BY
300-66201		SOURCE HOUSING SHUTTER		
QUANTITY		MATERIAL		
		C81300 BRONZE		
REMARKS:				



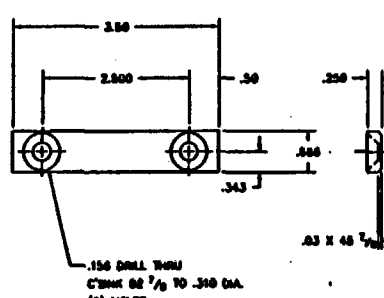
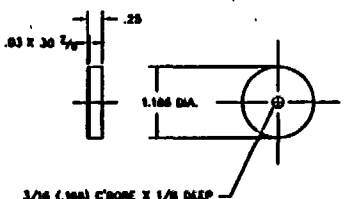
FINISH ALL OVER  
REMOVE ALL SHARP EDGES

INTERGRADED INDUSTRIAL SYSTEMS		SCALE: FULL	MACHINING DATA	
PART NUMBER	REV.	DESCRIPTION	DATE	BY
300-66202		SOLENOID MOUNTING PLATE		
QUANTITY		MATERIAL		
		L.C. STEEL		
REMARKS:				



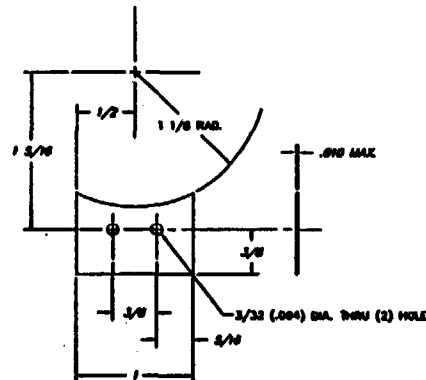
FINISH ALL OVER  
REMOVE ALL SHARP EDGES

INTERGRADED INDUSTRIAL SYSTEMS		SCALE: FULL	MACHINING DATA	
PART NUMBER	REV.	DESCRIPTION	DATE	BY
300-66203		SOURCE COVER		
QUANTITY		MATERIAL		
		L.C. STEEL		
REMARKS:				



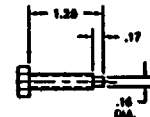
FINISH ALL OVER  
REMOVE ALL SHARP EDGES

INTERGRADED INDUSTRIAL SYSTEMS		SCALE: 2=1	MACHINING DATA	
PART NUMBER	REV.	DESCRIPTION	DATE	BY
300-66204		SOURCE PLUG		
QUANTITY		MATERIAL		
		L.C. STEEL		
REMARKS:				



FINISH ALL OVER  
REMOVE ALL SHARP EDGES

INTERGRADED INDUSTRIAL SYSTEMS		SCALE: 2=1	MACHINING DATA	
PART NUMBER	REV.	DESCRIPTION	DATE	BY
300-66205		SHUTTER STOP		
QUANTITY		MATERIAL		
		ALUM.		
REMARKS:				



FINISH ALL OVER  
REMOVE ALL SHARP EDGES

INTERGRADED INDUSTRIAL SYSTEMS		SCALE: FULL	MACHINING DATA	
PART NUMBER	REV.	DESCRIPTION	DATE	BY
300-66207		SOURCE LOOKING BOLT		
QUANTITY		MATERIAL		
		STOCK 1/4-20 X 1 1/4 LG. HEX BOLT		
REMARKS:				

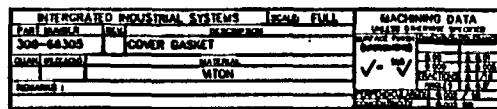
REV.	DATE	BY	CD.	FOR	DESCRIPTION
1					

DATE: 8/15/93 BY: [Signature]

INTERGRADED INDUSTRIAL SYSTEMS  
475 MAIN STREET  
VALLEJO, CALIFORNIA 94590

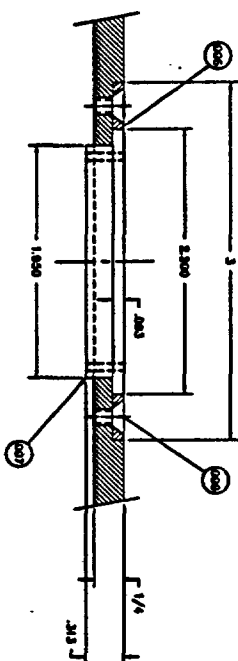
300-662  
A





DEC 21 1993

[illegible]



**SECTION A - A**

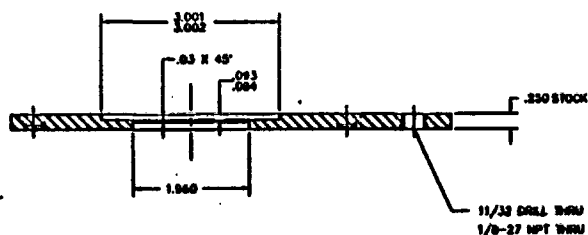
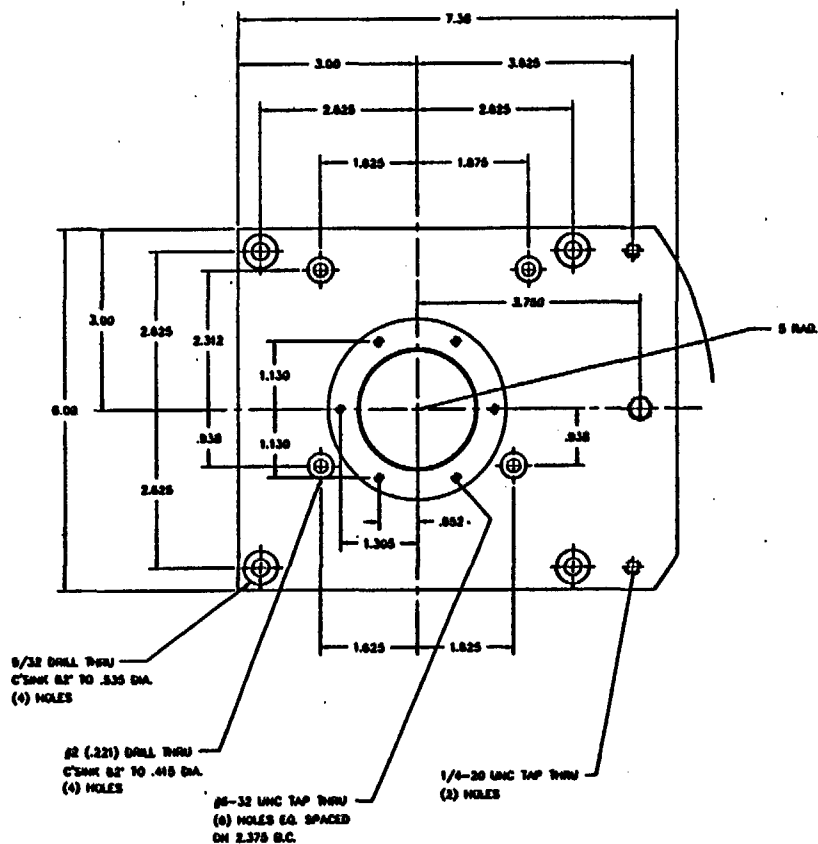
**SCALE 2 : 1**

DEC 21 1993

[illegible]

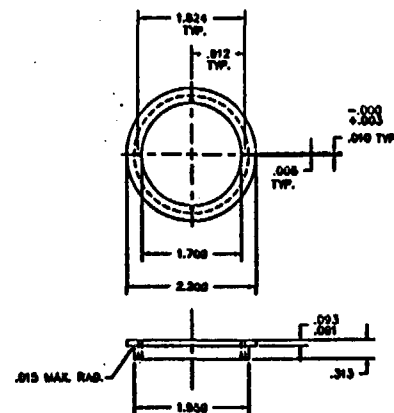
ST	14.5	17	20	23	26	29	32	35	38	41	44	47	50	53	56	59	62	65	68	71	74	77	80	83	86	89	92	95	98	101	104	107	110	113	116	119	122	125	128	131	134	137	140	143	146	149	152	155	158	161	164	167	170	173	176	179	182	185	188	191	194	197	200	203	206	209	212	215	218	221	224	227	230	233	236	239	242	245	248	251	254	257	260	263	266	269	272	275	278	281	284	287	290	293	296	299	302	305	308	311	314	317	320	323	326	329	332	335	338	341	344	347	350	353	356	359	362	365	368	371	374	377	380	383	386	389	392	395	398	401	404	407	410	413	416	419	422	425	428	431	434	437	440	443	446	449	452	455	458	461	464	467	470	473	476	479	482	485	488	491	494	497	500	503	506	509	512	515	518	521	524	527	530	533	536	539	542	545	548	551	554	557	560	563	566	569	572	575	578	581	584	587	590	593	596	599	602	605	608	611	614	617	620	623	626	629	632	635	638	641	644	647	650	653	656	659	662	665	668	671	674	677	680	683	686	689	692	695	698	701	704	707	710	713	716	719	722	725	728	731	734	737	740	743	746	749	752	755	758	761	764	767	770	773	776	779	782	785	788	791	794	797	800	803	806	809	812	815	818	821	824	827	830	833	836	839	842	845	848	851	854	857	860	863	866	869	872	875	878	881	884	887	890	893	896	899	902	905	908	911	914	917	920	923	926	929	932	935	938	941	944	947	950	953	956	959	962	965	968	971	974	977	980	983	986	989	992	995	998	1001	1004	1007	1010	1013	1016	1019	1022	1025	1028	1031	1034	1037	1040	1043	1046	1049	1052	1055	1058	1061	1064	1067	1070	1073	1076	1079	1082	1085	1088	1091	1094	1097	1100	1103	1106	1109	1112	1115	1118	1121	1124	1127	1130	1133	1136	1139	1142	1145	1148	1151	1154	1157	1160	1163	1166	1169	1172	1175	1178	1181	1184	1187	1190	1193	1196	1199	1202	1205	1208	1211	1214	1217	1220	1223	1226	1229	1232	1235	1238	1241	1244	1247	1250	1253	1256	1259	1262	1265	1268	1271	1274	1277	1280	1283	1286	1289	1292	1295	1298	1301	1304	1307	1310	1313	1316	1319	1322	1325	1328	1331	1334	1337	1340	1343	1346	1349	1352	1355	1358	1361	1364	1367	1370	1373	1376	1379	1382	1385	1388	1391	1394	1397	1400	1403	1406	1409	1412	1415	1418	1421	1424	1427	1430	1433	1436	1439	1442	1445	1448	1451	1454	1457	1460	1463	1466	1469	1472	1475	1478	1481	1484	1487	1490	1493	1496	1499	1502	1505	1508	1511	1514	1517	1520	1523	1526	1529	1532	1535	1538	1541	1544	1547	1550	1553	1556	1559	1562	1565	1568	1571	1574	1577	1580	1583	1586	1589	1592	1595	1598	1601	1604	1607	1610	1613	1616	1619	1622	1625	1628	1631	1634	1637	1640	1643	1646	1649	1652	1655	1658	1661	1664	1667	1670	1673	1676	1679	1682	1685	1688	1691	1694	1697	1700	1703	1706	1709	1712	1715	1718	1721	1724	1727	1730	1733	1736	1739	1742	1745	1748	1751	1754	1757	1760	1763	1766	1769	1772	1775	1778	1781	1784	1787	1790	1793	1796	1799	1802	1805	1808	1811	1814	1817	1820	1823	1826	1829	1832	1835	1838	1841	1844	1847	1850	1853	1856	1859	1862	1865	1868	1871	1874	1877	1880	1883	1886	1889	1892	1895	1898	1901	1904	1907	1910	1913	1916	1919	1922	1925	1928	1931	1934	1937	1940	1943	1946	1949	1952	1955	1958	1961	1964	1967	1970	1973	1976	1979	1982	1985	1988	1991	1994	1997	2000	2003	2006	2009	2012	2015	2018	2021	2024	2027	2030	2033	2036	2039	2042	2045	2048	2051	2054	2057	2060	2063	2066	2069	2072	2075	2078	2081	2084	2087	2090	2093	2096	2099	2102	2105	2108	2111	2114	2117	2120	2123	2126	2129	2132	2135	2138	2141	2144	2147	2150	2153	2156	2159	2162	2165	2168	2171	2174	2177	2180	2183	2186	2189	2192	2195	2198	2201	2204	2207	2210	2213	2216	2219	2222	2225	2228	2231	2234	2237	2240	2243	2246	2249	2252	2255	2258	2261	2264	2267	2270	2273	2276	2279	2282	2285	2288	2291	2294	2297	2300	2303	2306	2309	2312	2315	2318	2321	2324	2327	2330	2333	2336	2339	2342	2345	2348	2351	2354	2357	2360	2363	2366	2369	2372	2375	2378	2381	2384	2387	2390	2393	2396	2399	2402	2405	2408	2411	2414	2417	2420	2423	2426	2429	2432	2435	2438	2441	2444	2447	2450	2453	2456	2459	2462	2465	2468	2471	2474	2477	2480	2483	2486	2489	2492	2495	2498	2501	2504	2507	2510	2513	2516	2519	2522	2525	2528	2531	2534	2537	2540	2543	2546	2549	2552	2555	2558	2561	2564	2567	2570	2573	2576	2579	2582	2585	2588	2591	2594	2597	2600	2603	2606	2609	2612	2615	2618	2621	2624	2627	2630	2633	2636	2639	2642	2645	2648	2651	2654	2657	2660	2663	2666	2669	2672	2675	2678	2681	2684	2687	2690	2693	2696	2699	2702	2705	2708	2711	2714	2717	2720	2723	2726	2729	2732	2735	2738	2741	2744	2747	2750	2753	2756	2759	2762	2765	2768	2771	2774	2777	2780	2783	2786	2789	2792	2795	2798	2801	2804	2807	2810	2813	2816	2819	2822	2825	2828	2831	2834	2837	2840	2843	2846	2849	2852	2855	2858	2861	2864	2867	2870	2873	2876	2879	2882	2885	2888	2891	2894	2897	2900	2903	2906	2909	2912	2915	2918	2921	2924	2927	2930	2933	2936	2939	2942	2945	2948	2951	2954	2957	2960	2963	2966	2969	2972	2975	2978	2981	2984	2987	2990	2993	2996	2999	3002	3005	3008	3011	3014	3017	3020	3023	3026	3029	3032	3035	3038	3041	3044	3047	3050	3053	3056	3059	3062	3065	3068	3071	3074	3077	3080	3083	3086	3089	3092	3095	3098	3101	3104	3107	3110	3113	3116	3119	3122	3125	3128	3131	3134	3137	3140	3143	3146	3149	3152	3155	3158	3161	3164	3167	3170	3173	3176	3179	3182	3185	3188	3191	3194	3197	3200	3203	3206	3209	3212	3215	3218	3221	3224	3227	3230	3233	3236	3239	3242	3245	3248	3251	3254	3257	3260	3263	3266	3269	3272	3275	3278	3281	3284	3287	3290	3293	3296	3299	3302	3305	3308	3311	3314	3317	3320	3323	3326	3329	3332	3335	3338	3341	3344	3347	3350	3353	3356	3359	3362	3365	3368	3371	3374	3377	3380	3383	3386	3389	3392	3395	3398	3401	3404	3407	3410	3413	3416	3419	3422	3425	3428	3431	3434	3437	3440	3443	3446	3449	3452	3455	3458	3461	3464	3467	3470	3473	3476	3479	3482	3485	3488	3491	3494	3497	3500	3503	3506	3509	3512	3515	3518	3521	3524	3527	3530	3533	3536	3539	3542	3545	3548	3551	3554	3557	3560	3563	3566	3569	3572	3575	3578	3581	3584	3587	3590	3593	3596	3599	3602	3605	3608	3611	3614	3617	3620	3623	3626	3629	3632	3635	3638	3641	3644	3647	3650	3653	3656	3659	3662	3665	3668	3671	3674	3677	3680	3683	3686	3689	3692	3695	3698	3701	3704	3707	3710	3713	3716	3719	3722	3725	3728	3731	3734	3737	3740	3743	3746	3749	3752	3755	3758	3761	3764	3767	3770	3773	3776	3779	3782	3785	3788	3791	3794	3797	3800	3803	3806	3809	3812	3815	3818	3821	3824	3827	3830	3833	3836	3839	3842	3845	3848	3851	3854	3857	3860	3863	3866	3869	3872	3875	3878	3881	3884	3887	3890	3893	3896	3899	3902	3905	3908	3911	3914	3917	3920	3923	3926	3929	3932	3935	3938	3941	3944	3947	3950	3953	3956	3959	3962	3965	3968	3971	3974	3977	3980	3983	3986	3989	3992	3995	3998	4001	4004	4007	4010	4013	4016	4019	4022	4025	4028	4031	4034	4037	4040	4043	4046	4049	4052	4055	4058	4061	4064	4067	4070	4073	4076	4079	4082	4085	4088	4091	4094	4097	4100	4103	4106	4109	4112	4115	4118	4121	4124	4127	4130	4133	4136	4139	4142	4145	4148	4151	4154	4157	4160	4163	4166	4169	4172	4175	4178	4181	4184	4187	4190	4193	4196	4199	4202	4205	4208	4211	4214	4217	4220	4223	4226	4229	4232	4235	4238	4241	4244	4247	4250	4253	42
----	------	----	----	----	----	----	----	----	----	----	----	----	----	----	----	----	----	----	----	----	----	----	----	----	----	----	----	----	----	-----	-----	-----	-----	-----	-----	-----	-----	-----	-----	-----	-----	-----	-----	-----	-----	-----	-----	-----	-----	-----	-----	-----	-----	-----	-----	-----	-----	-----	-----	-----	-----	-----	-----	-----	-----	-----	-----	-----	-----	-----	-----	-----	-----	-----	-----	-----	-----	-----	-----	-----	-----	-----	-----	-----	-----	-----	-----	-----	-----	-----	-----	-----	-----	-----	-----	-----	-----	-----	-----	-----	-----	-----	-----	-----	-----	-----	-----	-----	-----	-----	-----	-----	-----	-----	-----	-----	-----	-----	-----	-----	-----	-----	-----	-----	-----	-----	-----	-----	-----	-----	-----	-----	-----	-----	-----	-----	-----	-----	-----	-----	-----	-----	-----	-----	-----	-----	-----	-----	-----	-----	-----	-----	-----	-----	-----	-----	-----	-----	-----	-----	-----	-----	-----	-----	-----	-----	-----	-----	-----	-----	-----	-----	-----	-----	-----	-----	-----	-----	-----	-----	-----	-----	-----	-----	-----	-----	-----	-----	-----	-----	-----	-----	-----	-----	-----	-----	-----	-----	-----	-----	-----	-----	-----	-----	-----	-----	-----	-----	-----	-----	-----	-----	-----	-----	-----	-----	-----	-----	-----	-----	-----	-----	-----	-----	-----	-----	-----	-----	-----	-----	-----	-----	-----	-----	-----	-----	-----	-----	-----	-----	-----	-----	-----	-----	-----	-----	-----	-----	-----	-----	-----	-----	-----	-----	-----	-----	-----	-----	-----	-----	-----	-----	-----	-----	-----	-----	-----	-----	-----	-----	-----	-----	-----	-----	-----	-----	-----	-----	-----	-----	-----	-----	-----	-----	-----	-----	-----	-----	-----	-----	-----	-----	-----	-----	-----	-----	-----	-----	-----	-----	-----	-----	-----	-----	-----	-----	-----	-----	-----	-----	-----	-----	-----	-----	-----	-----	-----	-----	-----	-----	-----	-----	-----	-----	-----	-----	-----	-----	-----	------	------	------	------	------	------	------	------	------	------	------	------	------	------	------	------	------	------	------	------	------	------	------	------	------	------	------	------	------	------	------	------	------	------	------	------	------	------	------	------	------	------	------	------	------	------	------	------	------	------	------	------	------	------	------	------	------	------	------	------	------	------	------	------	------	------	------	------	------	------	------	------	------	------	------	------	------	------	------	------	------	------	------	------	------	------	------	------	------	------	------	------	------	------	------	------	------	------	------	------	------	------	------	------	------	------	------	------	------	------	------	------	------	------	------	------	------	------	------	------	------	------	------	------	------	------	------	------	------	------	------	------	------	------	------	------	------	------	------	------	------	------	------	------	------	------	------	------	------	------	------	------	------	------	------	------	------	------	------	------	------	------	------	------	------	------	------	------	------	------	------	------	------	------	------	------	------	------	------	------	------	------	------	------	------	------	------	------	------	------	------	------	------	------	------	------	------	------	------	------	------	------	------	------	------	------	------	------	------	------	------	------	------	------	------	------	------	------	------	------	------	------	------	------	------	------	------	------	------	------	------	------	------	------	------	------	------	------	------	------	------	------	------	------	------	------	------	------	------	------	------	------	------	------	------	------	------	------	------	------	------	------	------	------	------	------	------	------	------	------	------	------	------	------	------	------	------	------	------	------	------	------	------	------	------	------	------	------	------	------	------	------	------	------	------	------	------	------	------	------	------	------	------	------	------	------	------	------	------	------	------	------	------	------	------	------	------	------	------	------	------	------	------	------	------	------	------	------	------	------	------	------	------	------	------	------	------	------	------	------	------	------	------	------	------	------	------	------	------	------	------	------	------	------	------	------	------	------	------	------	------	------	------	------	------	------	------	------	------	------	------	------	------	------	------	------	------	------	------	------	------	------	------	------	------	------	------	------	------	------	------	------	------	------	------	------	------	------	------	------	------	------	------	------	------	------	------	------	------	------	------	------	------	------	------	------	------	------	------	------	------	------	------	------	------	------	------	------	------	------	------	------	------	------	------	------	------	------	------	------	------	------	------	------	------	------	------	------	------	------	------	------	------	------	------	------	------	------	------	------	------	------	------	------	------	------	------	------	------	------	------	------	------	------	------	------	------	------	------	------	------	------	------	------	------	------	------	------	------	------	------	------	------	------	------	------	------	------	------	------	------	------	------	------	------	------	------	------	------	------	------	------	------	------	------	------	------	------	------	------	------	------	------	------	------	------	------	------	------	------	------	------	------	------	------	------	------	------	------	------	------	------	------	------	------	------	------	------	------	------	------	------	------	------	------	------	------	------	------	------	------	------	------	------	------	------	------	------	------	------	------	------	------	------	------	------	------	------	------	------	------	------	------	------	------	------	------	------	------	------	------	------	------	------	------	------	------	------	------	------	------	------	------	------	------	------	------	------	------	------	------	------	------	------	------	------	------	------	------	------	------	------	------	------	------	------	------	------	------	------	------	------	------	------	------	------	------	------	------	------	------	------	------	------	------	------	------	------	------	------	------	------	------	------	------	------	------	------	------	------	------	------	------	------	------	------	------	------	------	------	------	------	------	------	------	------	------	------	------	------	------	------	------	------	------	------	------	------	------	------	------	------	------	------	------	------	------	------	------	------	------	------	------	------	------	------	------	------	------	------	------	------	------	------	------	------	------	------	------	------	------	------	------	------	------	------	------	------	------	------	------	------	------	------	------	------	------	------	------	------	------	------	------	------	------	------	------	------	------	------	------	------	------	------	------	------	------	------	------	------	------	------	------	------	------	------	------	------	------	------	------	------	------	------	------	------	------	------	------	------	------	------	------	------	------	------	------	------	------	------	------	------	------	------	------	------	------	------	------	------	------	------	------	------	------	------	------	------	------	------	------	------	------	------	------	------	------	------	------	------	------	------	------	------	------	------	------	------	------	------	------	------	------	------	------	------	------	------	------	------	------	------	------	------	------	------	------	------	------	------	------	------	------	------	------	------	------	------	------	------	------	------	------	------	------	------	------	------	------	------	------	------	------	------	------	------	------	------	------	------	------	------	------	------	------	------	------	------	------	------	------	------	------	------	------	------	------	------	------	------	------	------	------	------	------	------	------	------	------	------	------	------	------	------	------	------	------	------	------	------	------	------	------	------	------	------	------	------	------	------	------	------	------	------	------	------	------	------	------	------	------	------	------	------	------	------	------	------	------	------	------	------	------	------	------	------	------	------	------	------	------	------	------	------	------	------	------	------	------	------	------	------	------	------	------	------	------	------	------	------	------	------	------	------	------	------	------	------	------	------	------	------	------	------	------	------	------	------	------	------	------	------	------	------	------	------	------	------	------	------	------	------	------	------	------	------	------	------	------	------	------	------	------	------	------	------	------	------	------	------	------	------	------	------	------	------	------	------	------	------	------	------	------	------	------	------	------	------	------	------	------	------	------	------	------	------	------	------	------	------	------	------	------	------	------	------	------	------	------	------	------	------	------	------	------	------	------	------	------	------	------	------	------	------	------	----





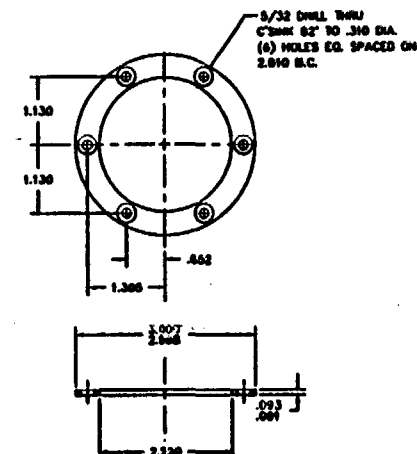
- 1)  $\sqrt{\text{FINISH}}$  ON ALL MACHINED SURFACES
- 2) REMOVE ALL SHARP EDGES AND BURRS

INTERGRADED INDUSTRIAL SYSTEMS		SCALE: FULL	MACHINING DATA	
PART NUMBER	REV	DESCRIPTION	DATE	BY
300-64501	001	SOURCE HOUSING TOP COVER		
QUANTITY		MATERIAL		
		Precision Ground Flat Stock		
REMARKS:		L.C. SIZE 1/4 INCH		



- 1)  $\sqrt{\text{FINISH}}$  ALL OVER
- 2) REMOVE ALL SHARP EDGES AND BURRS

INTERGRADED INDUSTRIAL SYSTEMS		SCALE: FULL	MACHINING DATA	
PART NUMBER	REV	DESCRIPTION	DATE	BY
300-64502	001	SOURCE TARGET HOLDER		
QUANTITY		MATERIAL		
		BRONZE		
REMARKS:		L.C. SIZE 1/4 INCH		

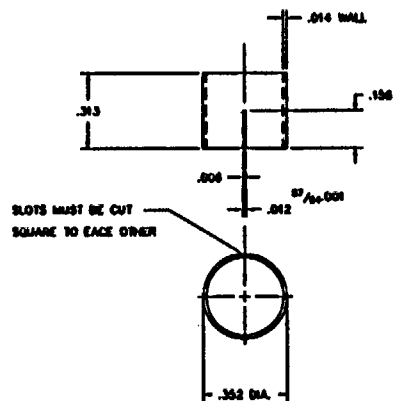


- 1)  $\sqrt{\text{FINISH}}$  ALL OVER
- 2) REMOVE ALL SHARP EDGES AND BURRS

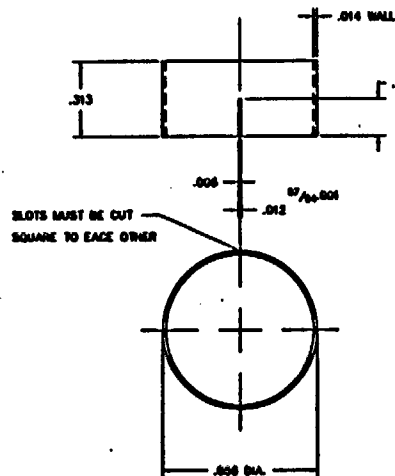
INTERGRADED INDUSTRIAL SYSTEMS		SCALE: FULL	MACHINING DATA	
PART NUMBER	REV	DESCRIPTION	DATE	BY
300-64503	001	CLAMP		
QUANTITY		MATERIAL		
		STAINLESS STEEL		
REMARKS:		L.C. SIZE 1/4 INCH		

DEC 21 1993

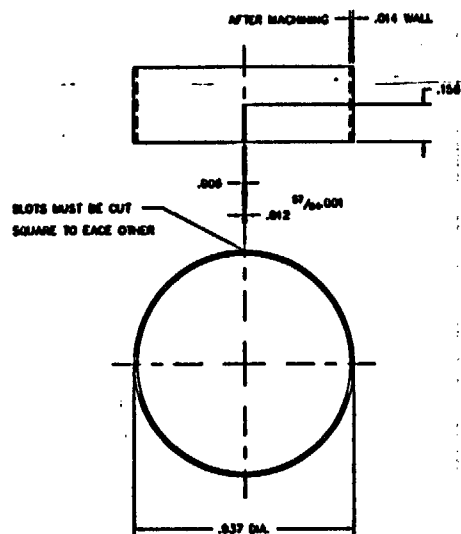
INTERGRADED INDUSTRIAL SYSTEMS		SCALE: FULL	MACHINING DATA	
PART NUMBER	REV	DESCRIPTION	DATE	BY
300-64504	001	SOURCE HOUSING TOP COVER		
QUANTITY		MATERIAL		
		Precision Ground Flat Stock		
REMARKS:		L.C. SIZE 1/4 INCH		



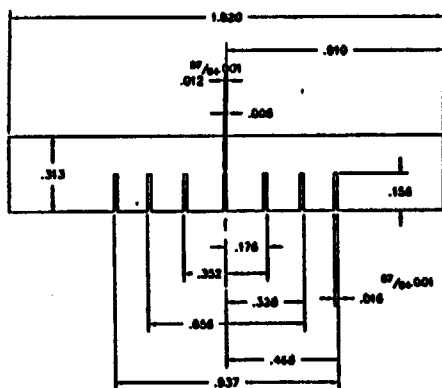
INTERGRATED INDUSTRIAL SYSTEMS		SCALE: 4=1	MACHINING DATA	
PART NUMBER	REV	DESCRIPTION	VALUE	STANDARD
300-66504		COLLIMATOR TUBE		
QTY (PARADO)		MATERIAL		
		BRASS TUBING		
REMARKS: .352 O.D. X .014 WALL THICKNESS				



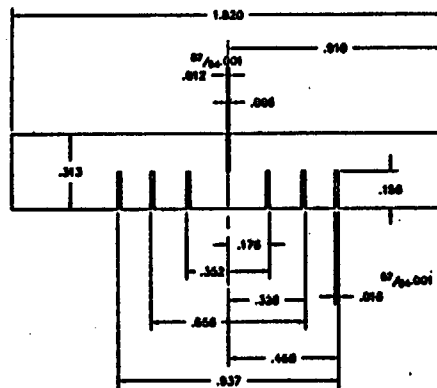
INTERGRATED INDUSTRIAL SYSTEMS		SCALE: 4=1	MACHINING DATA	
PART NUMBER	REV	DESCRIPTION	VALUE	STANDARD
300-66505		COLLIMATOR TUBE		
QTY (PARADO)		MATERIAL		
		BRASS TUBING		
REMARKS: .354 O.D. X .014 WALL THICKNESS				



INTERGRATED INDUSTRIAL SYSTEMS		SCALE: 4=1	MACHINING DATA	
PART NUMBER	REV	DESCRIPTION	VALUE	STANDARD
300-66506		COLLIMATOR TUBE		
QTY (PARADO)		MATERIAL		
		BRASS TUBING		
REMARKS: .337 O.D. X .014 WALL THICKNESS				



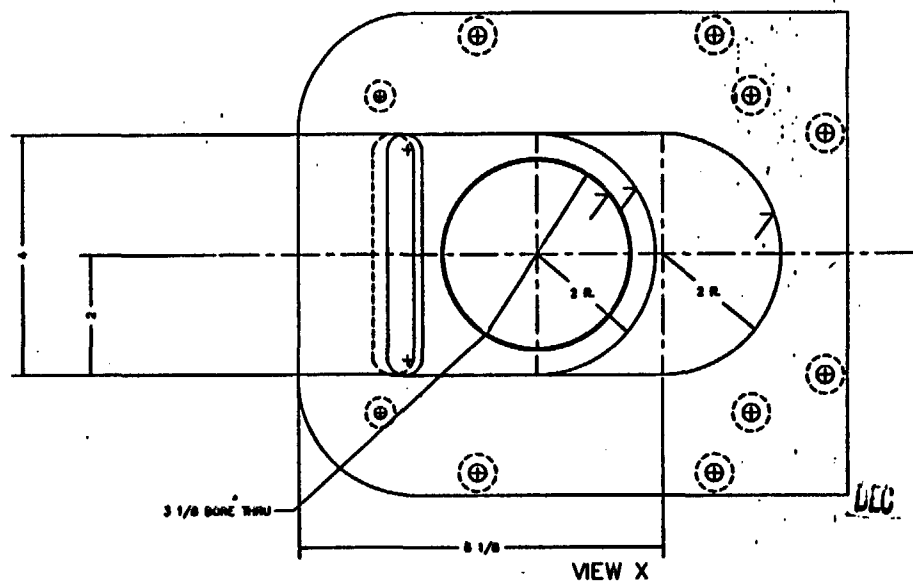
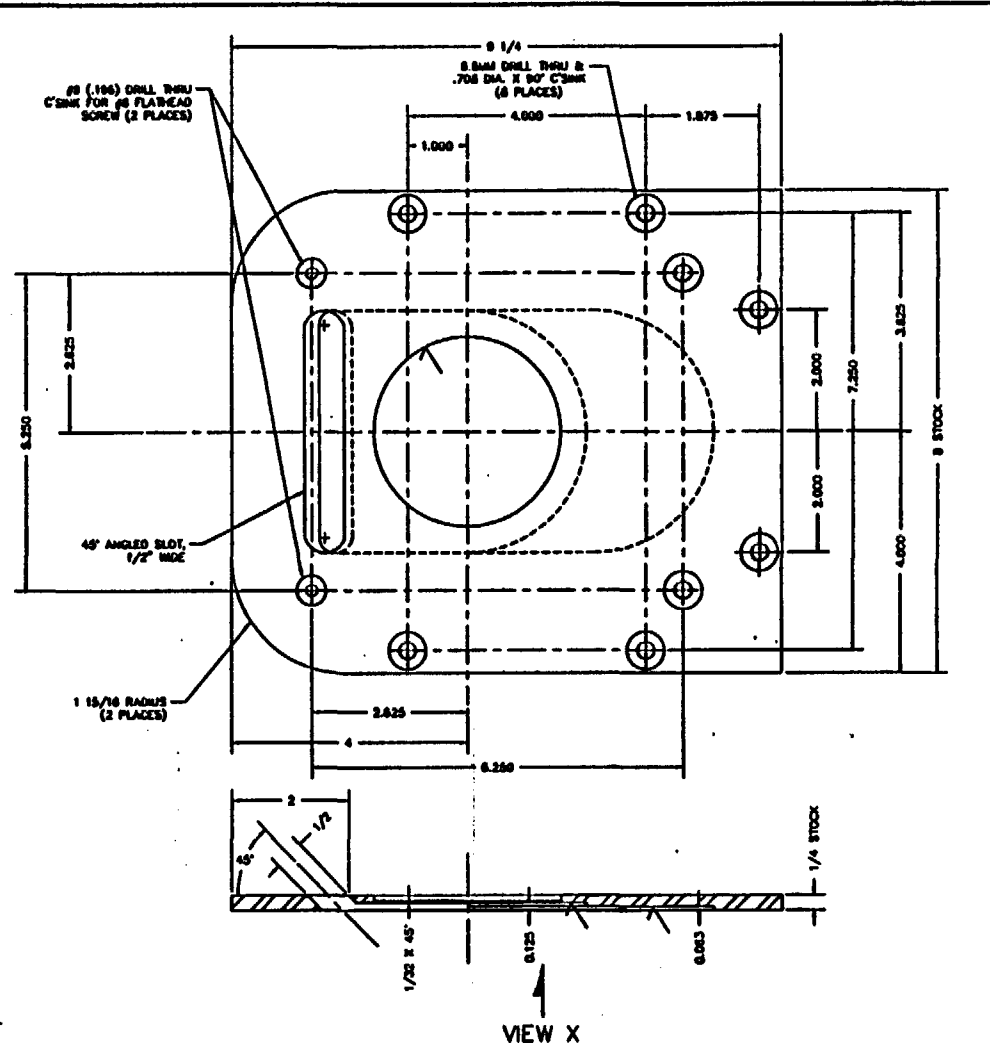
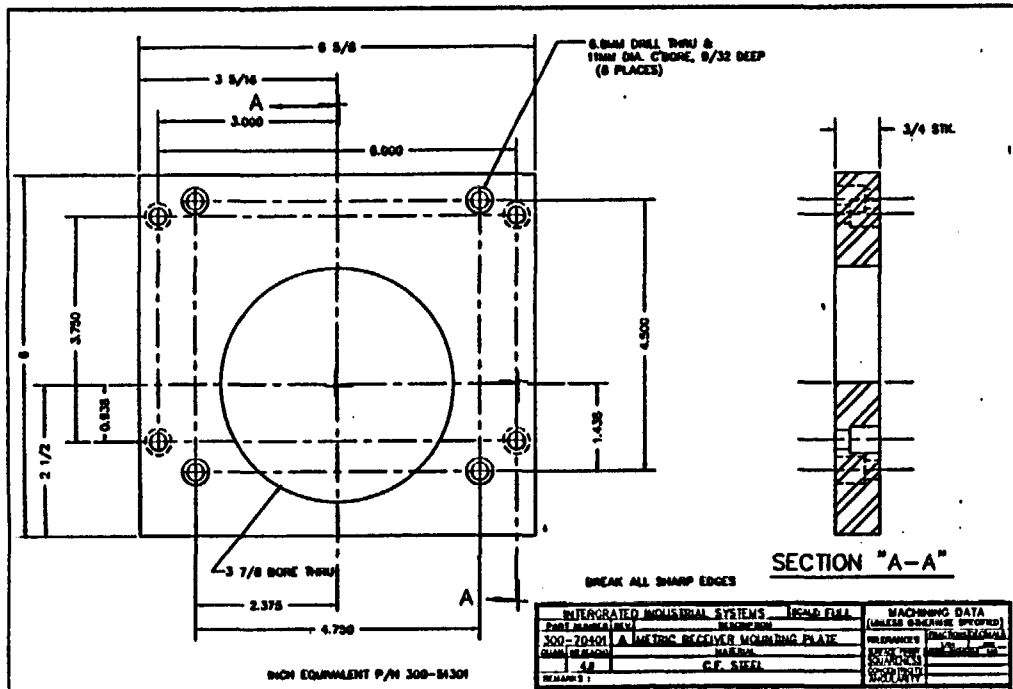
INTERGRATED INDUSTRIAL SYSTEMS		SCALE: 4=1	MACHINING DATA	
PART NUMBER	REV	DESCRIPTION	VALUE	STANDARD
300-66507		COLLIMATOR FRAME		
QTY (PARADO)		MATERIAL		
		BRONZE STRIP		
REMARKS: .337 O.D. X .014 WALL THICKNESS				



INTERGRATED INDUSTRIAL SYSTEMS		SCALE: 4=1	MACHINING DATA	
PART NUMBER	REV	DESCRIPTION	VALUE	STANDARD
300-66508		COLLIMATOR FRAME		
QTY (PARADO)		MATERIAL		
		BRONZE STRIP		
REMARKS: .337 O.D. X .014 WALL THICKNESS				

DEC 21 1993

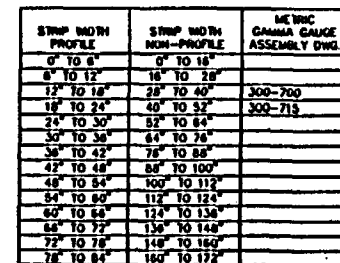
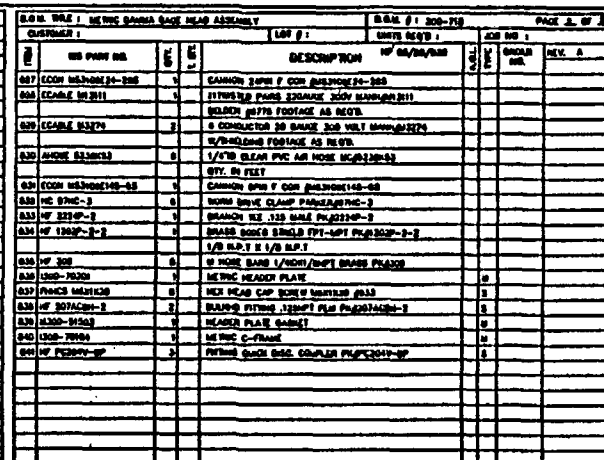
REV	DATE	BY	REL	FOR	DESCRIPTION
1	12/21/93	SSJ			
2	12/21/93	SSJ			
3	12/21/93	SSJ			
GAMMA GAGE SOURCE HOUSING COVER DETAILS					
INTERGRATED INDUSTRIAL SYSTEMS 410 MAIN STREET YALEVILLE, CONNECTICUT 06493					
300-665					
SHEET 1 OF 1					



DEC 21 1993

INTERGRATED INDUSTRIAL SYSTEMS		ITEM # 300-81302		MACHINING DATA	
PART NAME	RECEIVER	QUANTITY	1	FINISH	AS SUPPLIED
300-70402	A METRIC SOURCE MOUNTING PLATE	REVISIONS	1	DATE	10/10/93
QUANTITY	1	DATE	10/10/93	BY	10/10/93
4.0	C.F. SIKAL	DATE	10/10/93	BY	10/10/93
REMARKS:					

REV	DATE	NAME	COMMENT	DATE	NAME
1	10/10/93	C.F. SIKAL	GAUGES DETAILS	10/10/93	C.F. SIKAL
MACHINING DATA					
INTERGRATED INDUSTRIAL SYSTEMS			ITEM # 300-81302		
QUANTITY 1			DATE 10/10/93		
BY C.F. SIKAL			CHECKED BY C.F. SIKAL		



**NOTE: THIS DRAWING IS DRAWN IN INCHES**

[illegible]

**WARNING LABELS**


**LIGHTS**

**RECEIVER**

**MEASURING GAP**

**RADIATION SOURCE**

**GAUGE**

REV	DATE	BY	REL	CON	NO	DESCRIPTION
1						
2						
3						
4						
5						
6						
7						
8						
9						
10						
						<b>GAMMA GAUGE ILLUSTRATION</b>
<b>INTEGRATED INDUSTRIAL SYSTEMS</b> 475 MAIN STREET WILMINGTON, CONNECTICUT 06097						BULK 100 148-624 211
REVISED 11/07/88 02/07/83 10-01						211

DEC 21 1993

SHUTTER HOUSING  
INSIDE COVER  
(SUB HOUSING)

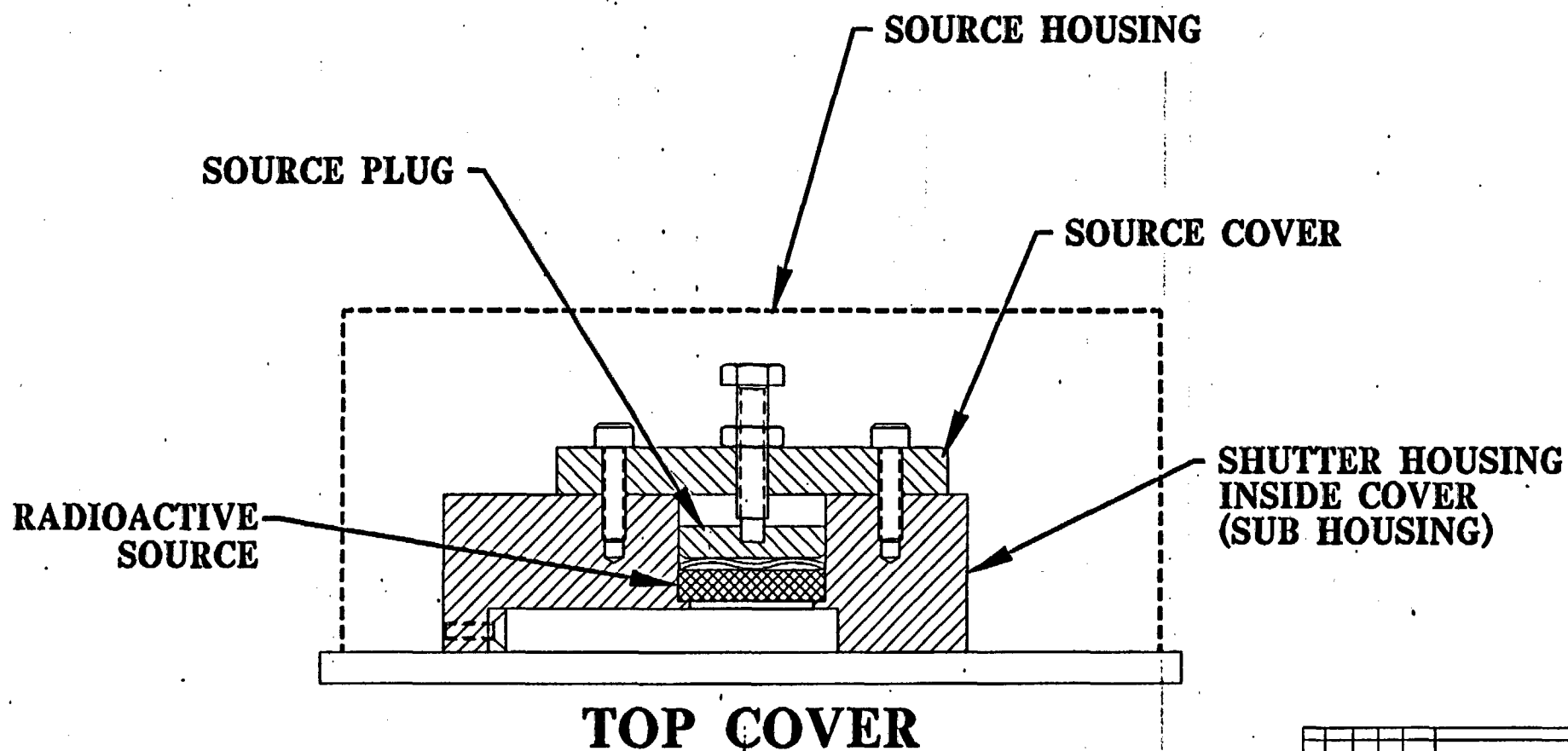
SHUTTER STOP

SHUTTER

TOP COVER (BOTTOM)

Dec 21 1993

REV	DATE	BY	REL	CON NO	DESCRIPTION
1					
2					
3					
4					
5					
6					
7					
8					
9					
10					
SOURCE HEAD COMPONENTS					
INTEGRATED INDUSTRIAL SYSTEMS					
475 MAIN STREET					
VALLEYVILLE, CONNECTICUT 06468					
140-717					
REV 0: 11/05/93 06/27/93 00.00					
SHEET 1 OF 1					



DEC 21 1993

REV	DATE	BY	CHK	REV	DATE	BY	CHK
1	01/01/93	JS		1	01/01/93	JS	
DATE				DATE			
01/01/93				01/01/93			
BY				BY			
JS				JS			
CHK				CHK			
TITLE				TITLE			
SOURCE HEAD COMPONENTS				SOURCE HEAD COMPONENTS			
INTERGRATED INDUSTRIAL SYSTEMS				INTERGRATED INDUSTRIAL SYSTEMS			
175 MAIN STREET				175 MAIN STREET			
VALERIE, CONNECTICUT 06463				VALERIE, CONNECTICUT 06463			
REV B 11/05/93 08/27/93 08/44				REV B 11/05/93 08/27/93 08/44			
PAGE 1 OF 1				PAGE 1 OF 1			

**INSTRUMENTATION:** BICRON MICRO Rem LE  
**SERIAL No:** B473J  
**CALIBRATION DATE:** JULY 9, 1993  
**BACKGROUND:** 0.002 mREM/HR  
**DATE:** AUGUST 27, 1993  
**SURVEYOR:** Robert L. Gallagher

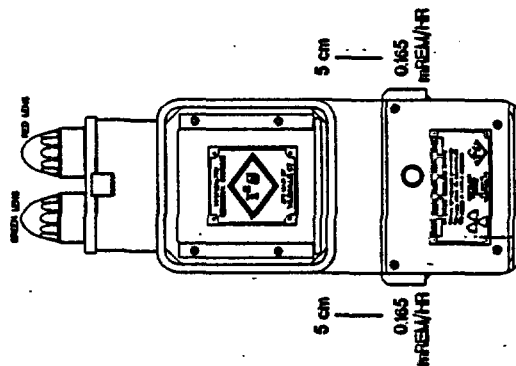
**SERIAL No: B473J**

CALIBRATION DATE: JULY 9, 1993

BACKGROUND: 0.002 mREM/HR

DATE: AUGUST 27, 1993

**SURVEYOR:** Robert L. Gallagher  
Robert L. Gallagher  
NOV 01 1993



100 cm  
5000

30 cm — 0.000

5 cm  
0.165  
REV/HR

5 cm 0.165

30 cm — 0.009 mBEW/HR

100 cm  
0.005  
BH/M38

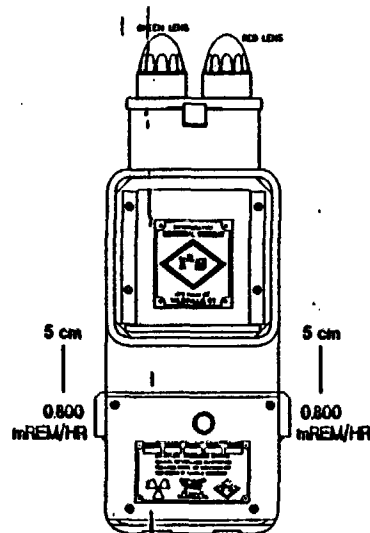
2 1 1933

[illegible]



SHUTTER STATUS: OPEN

INSTRUMENTATION: BICRON MICRO Rem LE  
 SERIAL No: B473J  
 CALIBRATION DATE: JULY 9, 1993  
 BACKGROUND: 0.002 mREM/HR  
 DATE: AUGUST 27, 1993  
 SURVEYOR: Robert L. Gallagher



100 cm  
0.009  
mREM/HR

30 cm  
0.15  
mREM/HR

5 cm  
0.800  
mREM/HR

5 cm  
0.800  
mREM/HR

30 cm  
0.15  
mREM/HR

100 cm  
0.009  
mREM/HR

27 1993

REV	DATE	BY	CHKD BY	DESCRIPTION
1	08/27/93	RLG		REVISION
GAMMA GAUGE PROBE W/SHUTTER OPEN (END VIEW)				
INTEGRATED INDUSTRIAL SYSTEMS 475 MAIN STREET TAUNTON, MASSACHUSETTS 01960				Doc. No. 140-718 Rev. A

SHUTTER STATUS: CLOSED

100 cm — 0.005  
mREM/hr

30 cm — 0.030  
mREM/hr

5 cm — 0.070  
mREM/hr

5 cm — 0.05  
mREM/hr

30 cm — 0.03  
mREM/hr

100 cm — 0.006  
mREM/hr

INSTRUMENTATION: BICRON MICRO REM LE  
SERIAL No.: B473J  
CALIBRATION DATE: JULY 9, 1993  
BACKGROUND: 0.002 mREM/hr  
DATE: AUGUST 27, 1993  
SURVEYOR: Robert L. Gallagher

UL 21 1993

DATE	TIME	LOC	NO.	REMARKS
8/27/93	14:00	100 cm	1	0.006 mREM/hr
8/27/93	14:05	30 cm	2	0.03 mREM/hr
8/27/93	14:10	5 cm	3	0.07 mREM/hr
8/27/93	14:15	5 cm	4	0.05 mREM/hr
8/27/93	14:20	30 cm	5	0.03 mREM/hr
8/27/93	14:25	100 cm	6	0.006 mREM/hr
CAMERA CANON PROGRAM W/SHUTTER CLOSED (SBC VER)				
BICRON MICRO REM LE SYSTEMS 140-719 201				

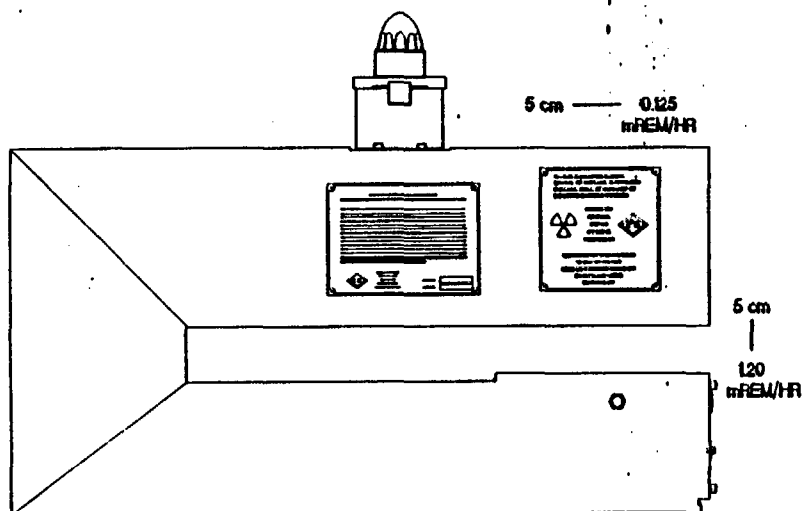
SHUTTER STATUS: OPEN

100 cm — 0.009  
mREM/HR

INSTRUMENTATION: BICRON MICRO Rem LE  
SERIAL No: B473J  
CALIBRATION DATE: JULY 9, 1993  
BACKGROUND: 0.002 mREM/HR  
DATE: AUGUST 27, 1993  
SURVEYOR: Robert L. Gallagher

30 cm — 0.050  
mREM/HR

5 cm — 0.125  
mREM/HR



30 cm  
|  
0.300  
mREM/HR

100 cm  
|  
0.009  
mREM/HR

666 21 1993

REV	DATE	BY	CHK	DATE	CHK
1	8/27/93	RLG			
TITLE					
GAMMA GAUGE PROFILE W/SHUTTER OPEN (SIDE VIEW)					
DRAWN BY				SCALE	
INTERGRADED INDUSTRIAL SYSTEMS				SHEET NO.	
375 MAIN STREET				140-719	
VALENTIA, CONNECTICUT 06462				A	
DATE: 8/27/93				BY: RLG	

