

# Yankee Rowe Connecticut Yankee

Management Meeting with the  
USNRC

June 23, 2003



# Agenda

- Management Changes
- Yankee Rowe Opening Remarks
- Yankee Rowe Plant Status
- Connecticut Yankee Opening Remarks
- Connecticut Yankee Plant Status
- Common Issues
- Summary/Concluding Remarks

# Connecticut Yankee and Rowe Management Changes

- Common Chief Executive Officer
- Separate Senior Management at Each Site
- Common Managers for QA, Regulatory Affairs, Procurement, Human Resources and Employee Concerns
- Continued Close Coordination Between Sites including Maine Yankee

# Yankee Rowe Plant Status





# Excellent Safety Performance Continues

- Over 1,000,000 Safe Work Hours Without a Lost Time Accident
- Low OSHA Recordable Incident Rate
- Continued Emphasis on Occupational and Radiological Safety



# Transfer to Dry Fuel Storage is Complete

- ISFSI Operational
- Fuel Loading Finished
- GTCC Canister Moved to Pad
- Spent Fuel Pool Cleanup in Progress
  - South Carolina DHEC Violation
- Multi-Tier Oversight Program was successful



# ISFSI Pad

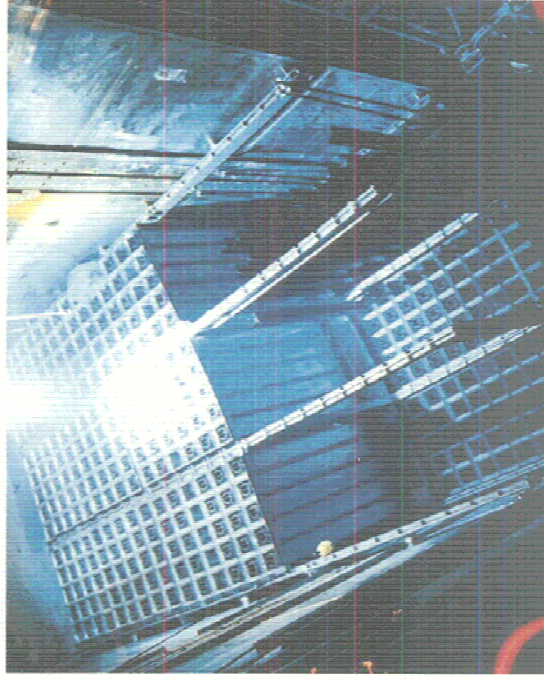


# Storage Canister Transport





# Spent Fuel Removal Complete



# Demolition Preparations are Underway

- DEMCO Selected to Perform Demolition
  - Well Versed in Nuclear Decommissioning
  - Positive Experience at CY
  - Mobilization Ongoing for a July 2003 Start
- Phase I to Remove all Buildings to Grade
  - Offsite Disposal of all buildings
- Phase II to Decon/Remove Subsurface Structures and Shoreline Structures and Backfill to grade



# An Experienced Team Will Oversee Demolition

- Experienced Oversight Team
  - Safety: Radiological and Occupational
  - Quality Assurance
  - Engineering
  - Radwaste Handling
- Formal Oversight Program
  - Manual and Implementing Procedures
  - FTOC, CY and MY Oversight Lessons Learned



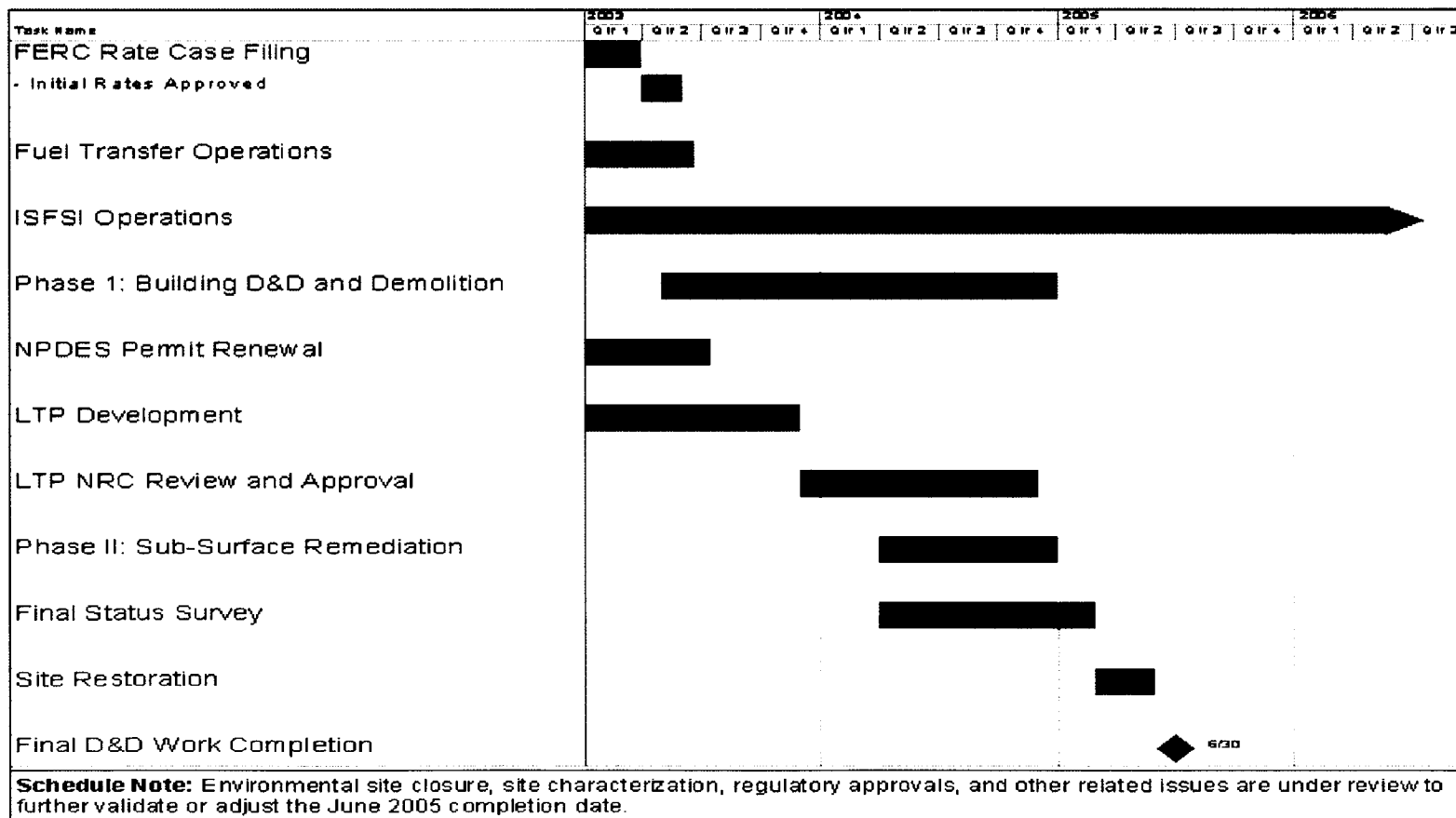
# Phase I Demolition

- Service Buildings
- Warehouses
- Vapor Container/ Reactor Support Structure
- Turbine Building/ Turbine Pedestal
- Primary Auxiliary Building
- Spent Fuel and Fuel Transfer Buildings
- Radwaste Building





# Integrated Schedule



# License Termination Plan is Under Development

- Meeting with NRC Early and Often
  - Series of 4 Meetings Since Dec 2002
- Also meeting with Mass DEP, DPH and EPA
- Modeled after CY LTP
- Groundwater characterization ongoing
- Early Submittal and Review of Dose Calculations
- NRC Review Schedule of 12 – 15 months
- Final Status Survey to start in 2004



# Connecticut Yankee Plant Status



# D&D Contract Termination

- CY terminated Bechtel DOC contract on 6/13/03
  - Incomplete and untimely performance
  - Refusal to perform remaining decommissioning tasks
  - Opportunity to cure before termination is effective
- Not related to safety, security or workmanship
- Extensive communication plan implemented
- Increased oversight underway
- No impact on fuel storage and security



# Contingency Planning Completed Ready for Transition

- Completed all critical contingency plans to support transition
  - Stop and Restart Work Process
  - Functional Area Transition Process
  - Programs & Procedures Ready for Issuance
  - Security Asset Control Plan
- Developing transition and execution schedules
  - Detailed transition schedule developed
  - Near-term execution schedule in process
- Planning subcontracts transition



# Work Stop and Restart Plans

- Stop work at logical stopping points
  - Radiological controls & occupational safety
  - Maintain systems in a safe condition
- Restart work after transition completed
  - Trained and qualified personnel
  - Approved programs and procedures
  - Updated work instructions
  - Equipment, materials and services in place
- Work focused on RPV removal, fuel transfer, and groundwater monitoring and soil removal



# Decommissioning Status

- Reactor Pressure Vessel Removal Preparations
  - Reactor Cavity Drained Complete
  - Vessel Concrete Injection Complete
  - Cavity Seal Removal Complete
  - STC Concrete Wall Removal Complete
  - RPV Nozzle Cutting In Process
  - Haul Road Upgrade Complete
  - Cask Transport to Hatch Area Complete



# Upcoming RPV Work

- Complete RPV Nozzle Cutting
- Transport RPV Canister into Containment
- Install RPV Lift System
- Place RPV into Shipping Container
- Low Density Concrete Injection into Canister
- Install Top Half of Shipping Container and Weld
- Final Low Density Concrete Injection into Canister
- Remove RPV Canister from Containment





# RPV Challenges

- Dose Reduction
- Heavy Load Rigging
- Canal Dredging
- Approval to Dispose Dredging Spoils via 10 CFR 20.2002



# Completed Fuel Transfer Activities

- ISFSI Construction and Fuel Transfer Activities
  - Construction of Fuel Canisters Complete
  - Construction of VCCs Complete
  - ISFSI Haul Road Complete
  - ISFSI Pad and Monitoring Station Complete
  - Fuel Reconstitution Complete
  - Spent Fuel Building Modifications Complete
  - Fuel Transfer Procedures Complete



# Upcoming Fuel Transfer Activities

- ISFSI Construction
  - Complete ISFSI and Security Installation
- Fuel Transfer
  - Receipt of Fuel Transfer equipment
  - Complete Fuel Transfer Crew Training
  - Conduct Dry Runs
  - Transfer 2 GTCC Canisters
  - Complete all Fuel Transfers
  - Receive NAC Amendment to Support Fuel Moves



# Fuel Transfer Challenges

- Dose reduction
- Reduced drying times
- Contamination control



# Decommissioning Photographs



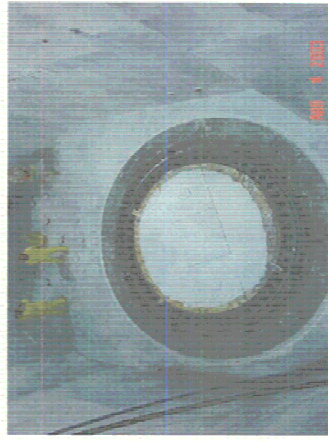
Tank Demo Tent



Tank Demo Work



STC Drained and Decommed



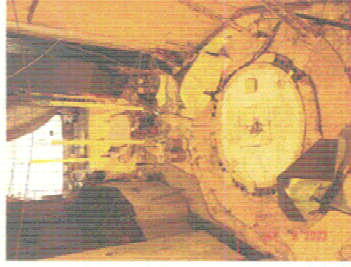
STC Decontaminated - Fixative Applied



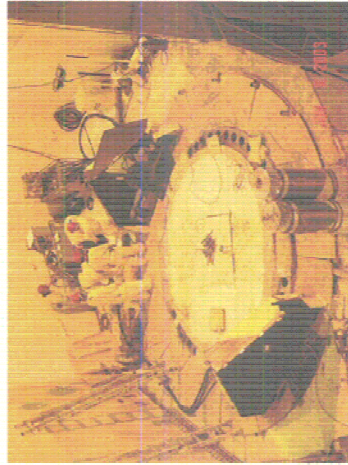
# Decommissioning Photographs



Preparing for STC Concrete Wall Removal



Cavity Wall Removal Complete



RPV Nozzle Cutting Set Up

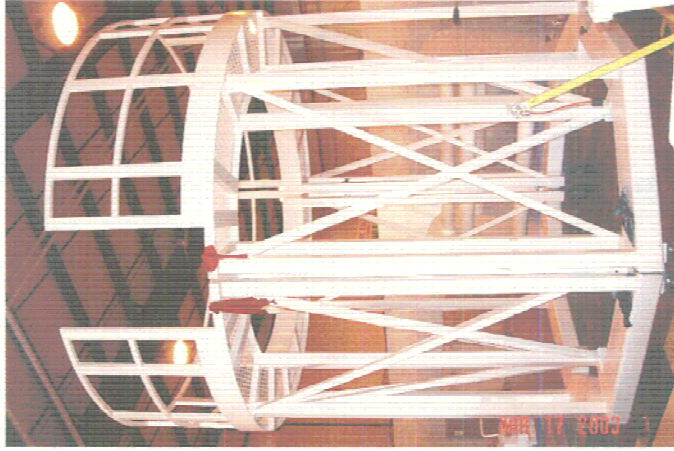


Nozzle Cutting Enclosure





# ISFSI Photographs



Fuel Canister Welding Platform



Constructed VCCs



Fuel Reconstitution



# ISFSI Photographs



ISFSI Haul Route and Pad



ISFSI Security Fencing



ISFSI Pad





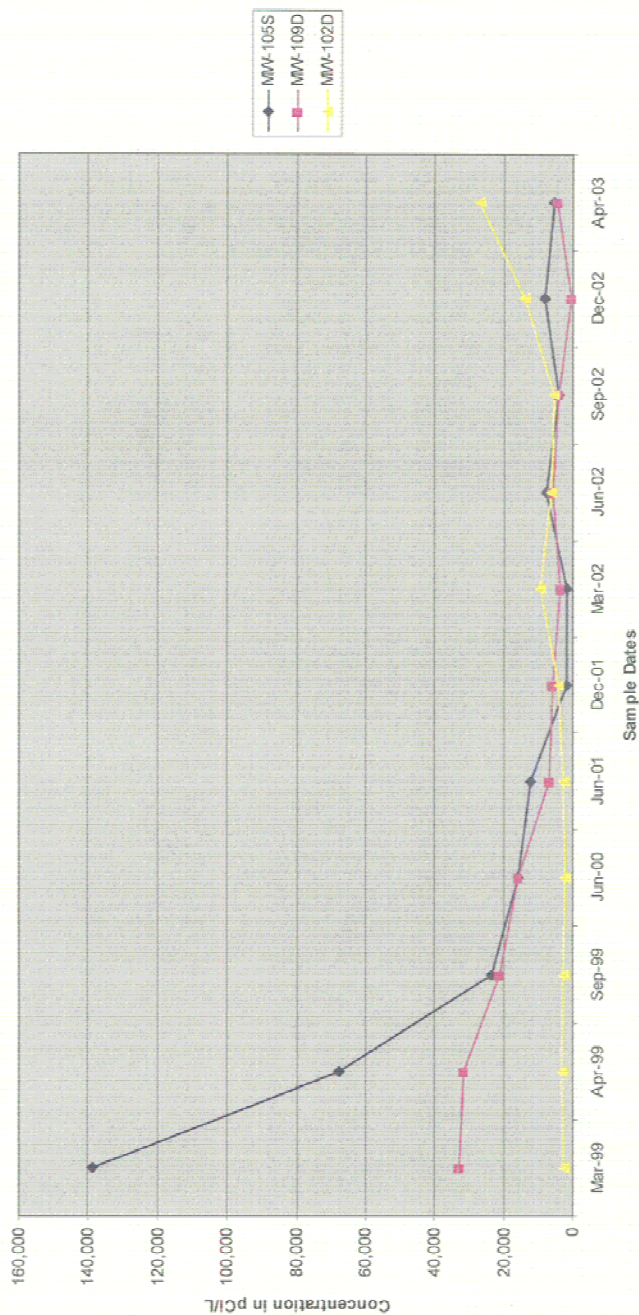
# Groundwater and Soil Remediation

- Quarterly groundwater sampling ongoing
  - Fluctuating tritium concentration
  - Strontium-90 concentration steady
  - Results fluctuate with seasons and containment mat sump operation
- Accessible building core bores complete
  - Little to no contamination under buildings
- Soil Sample Results
  - Soil contaminated under tank farm

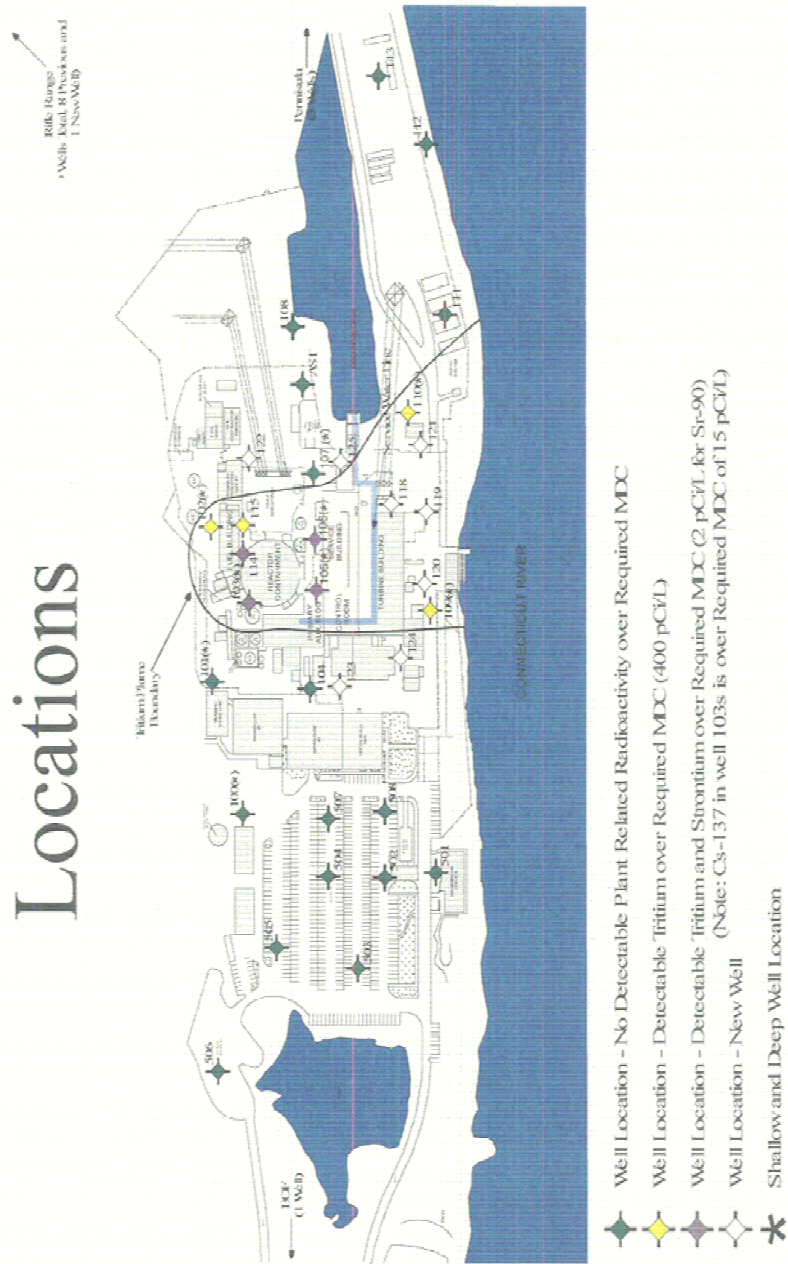


# Tritium Concentration Trend

Tritium Concentration Trend  
DCGL 652,000 pCi/L



# Groundwater Monitoring Locations

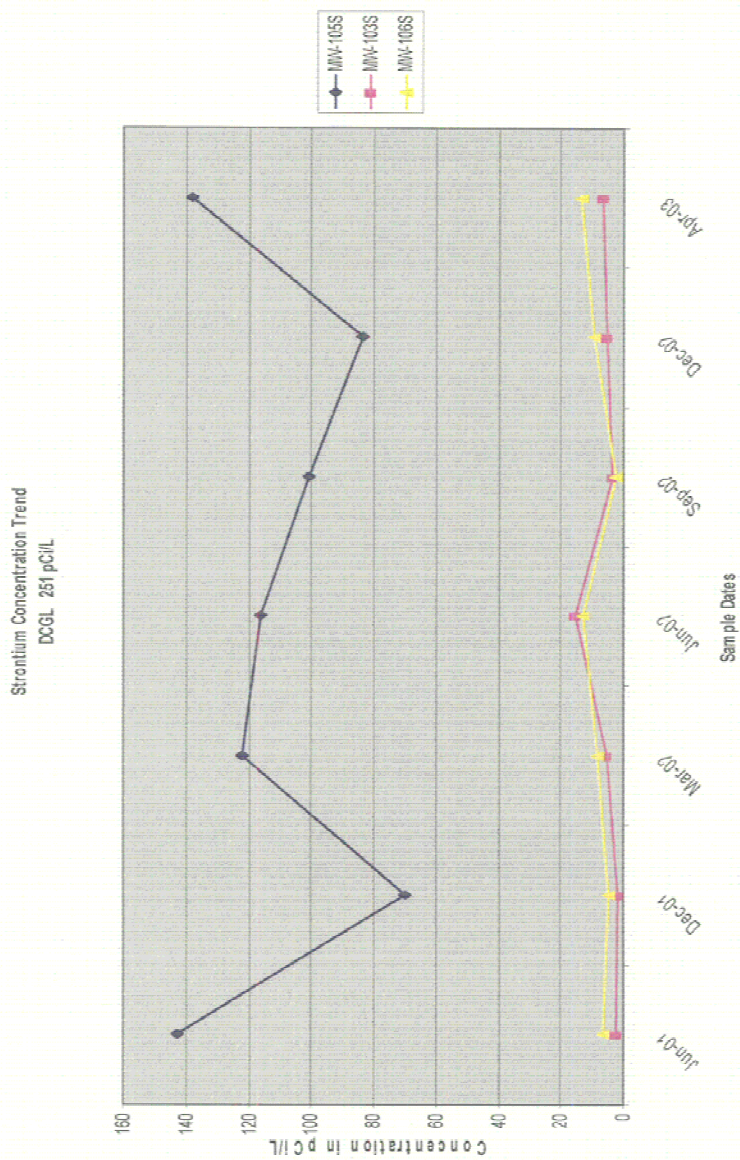


Status as of December 2002 Sample Round, Rev 00325303





# Strontium Concentration Trend



# Final Status Survey Implementation

- FSS completed for outlying areas
- Performing FSS for some Class 2 areas
- Met with NRC FSS reviewer to obtain feedback on report contents and format
- Postpone ORISE confirmatory surveys to allow for transition to occur



# Common Issues

# Security Enhancements In Place

- Implemented orders for ISFSIs and decommissioned plants
  - Weapons training enhanced
- Awaiting CAL retraction letter for Rowe
- Planning for additional security requirements
  - Orders recently issued to operating plants
- Relief from State Police response time at Rowe

# Successful Table Top Drills

- Conducted at each site in May
- Participation from State Police, FBI, State Emergency Management, State Department of Environmental Protection, NRC
- Positive feedback from all involved



# Active Public Participation Continues to be Fostered

- Site closure process is transparent to and considerate of interested stakeholders
- Citizens Advisory Boards (CDAC/CAB)
- Franklin County Council of Governments
- NRC participation in CDAC/CAB meeting positively received

# Summary/Concluding Remarks