

## PCCV Liner Weld/Rathole Study

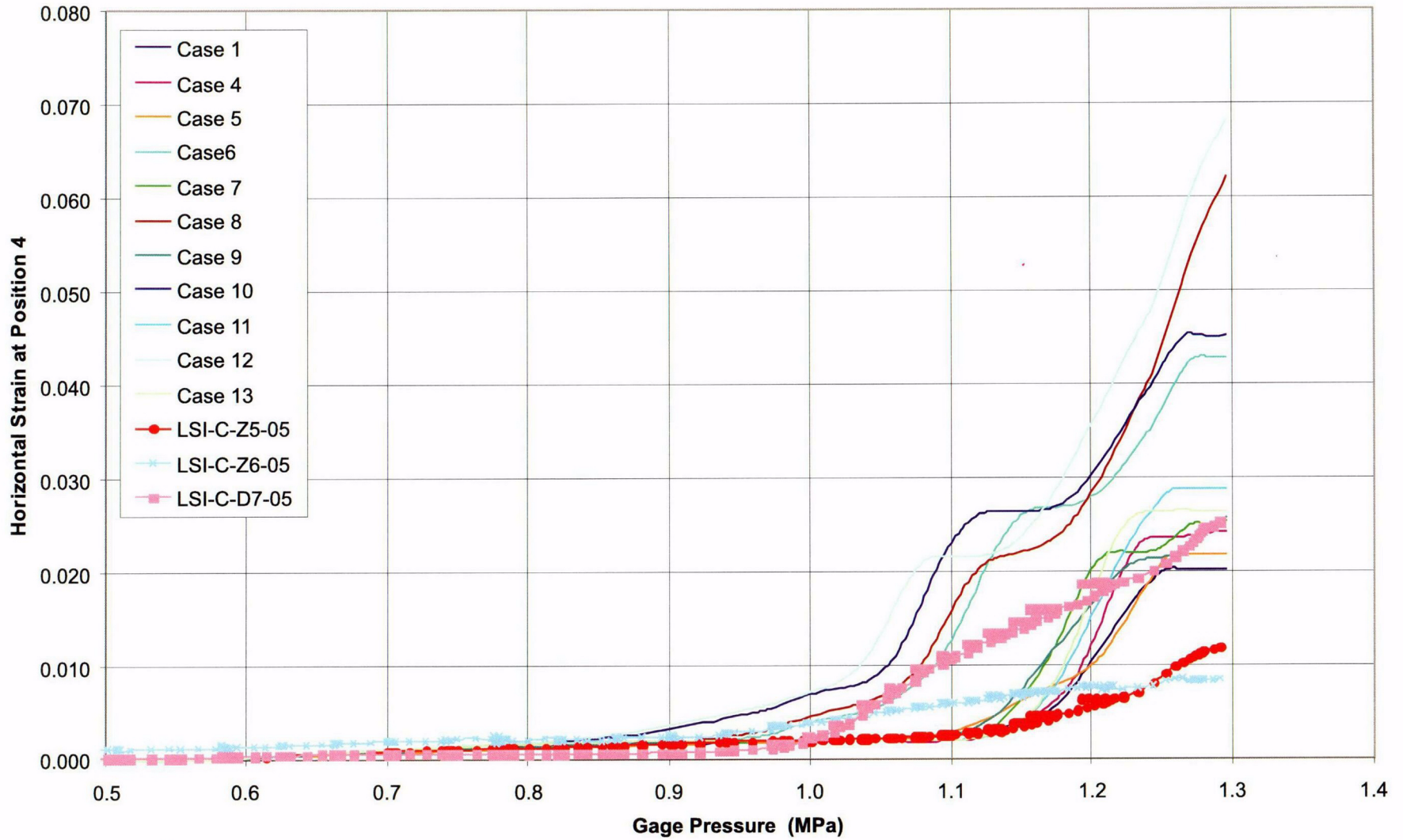


Figure 8-57. PCCV Liner Weld/Rat-Hole Study Mesh Sensitivity, Horizontal Strain Comparisons at Gage Position 4

# PCCV Liner Weld/Rathole Study

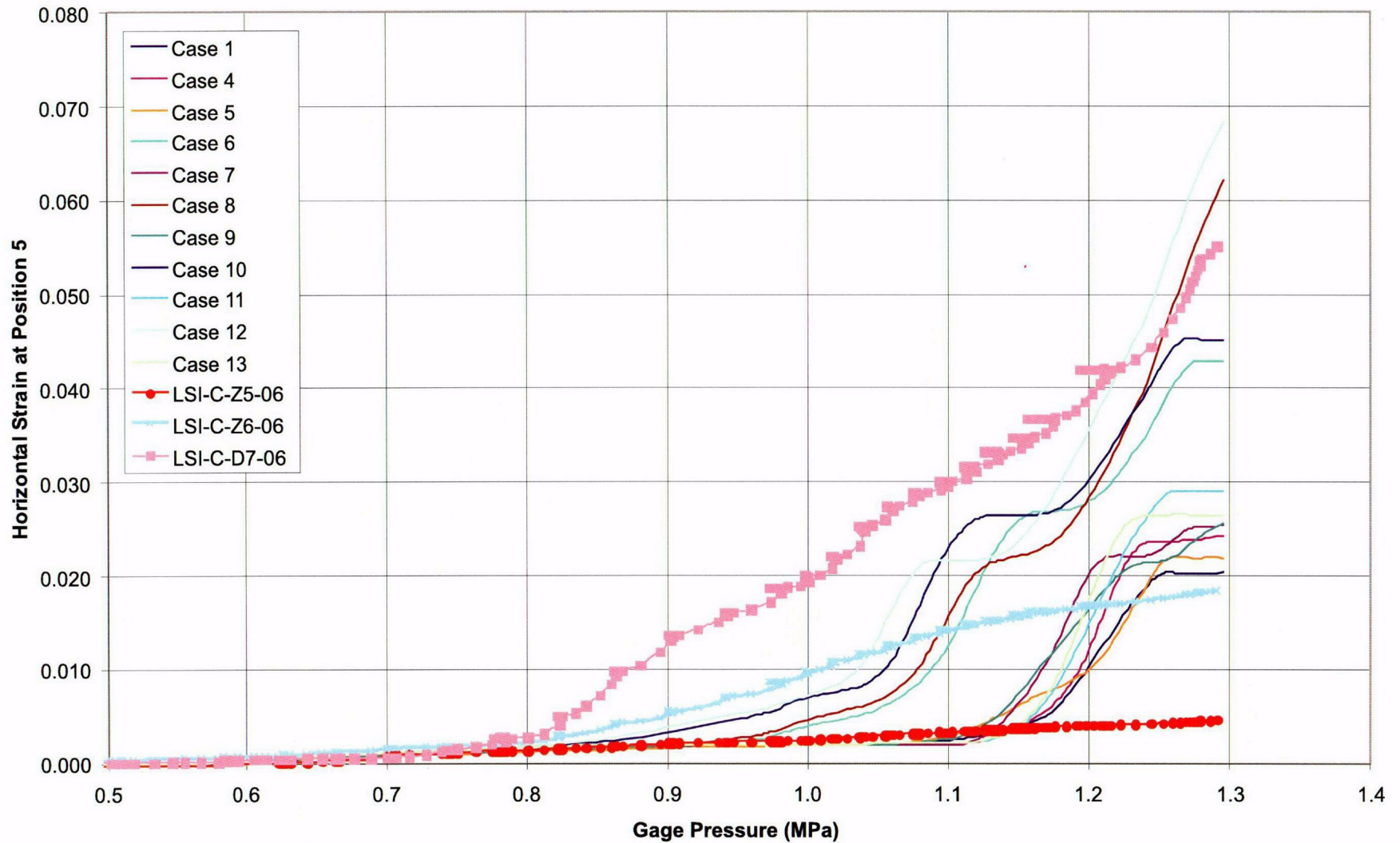


Figure 8-58. PCCV Liner Weld/Rat-Hole Study Mesh Sensitivity, Horizontal Strain Comparisons at Gage Position 5

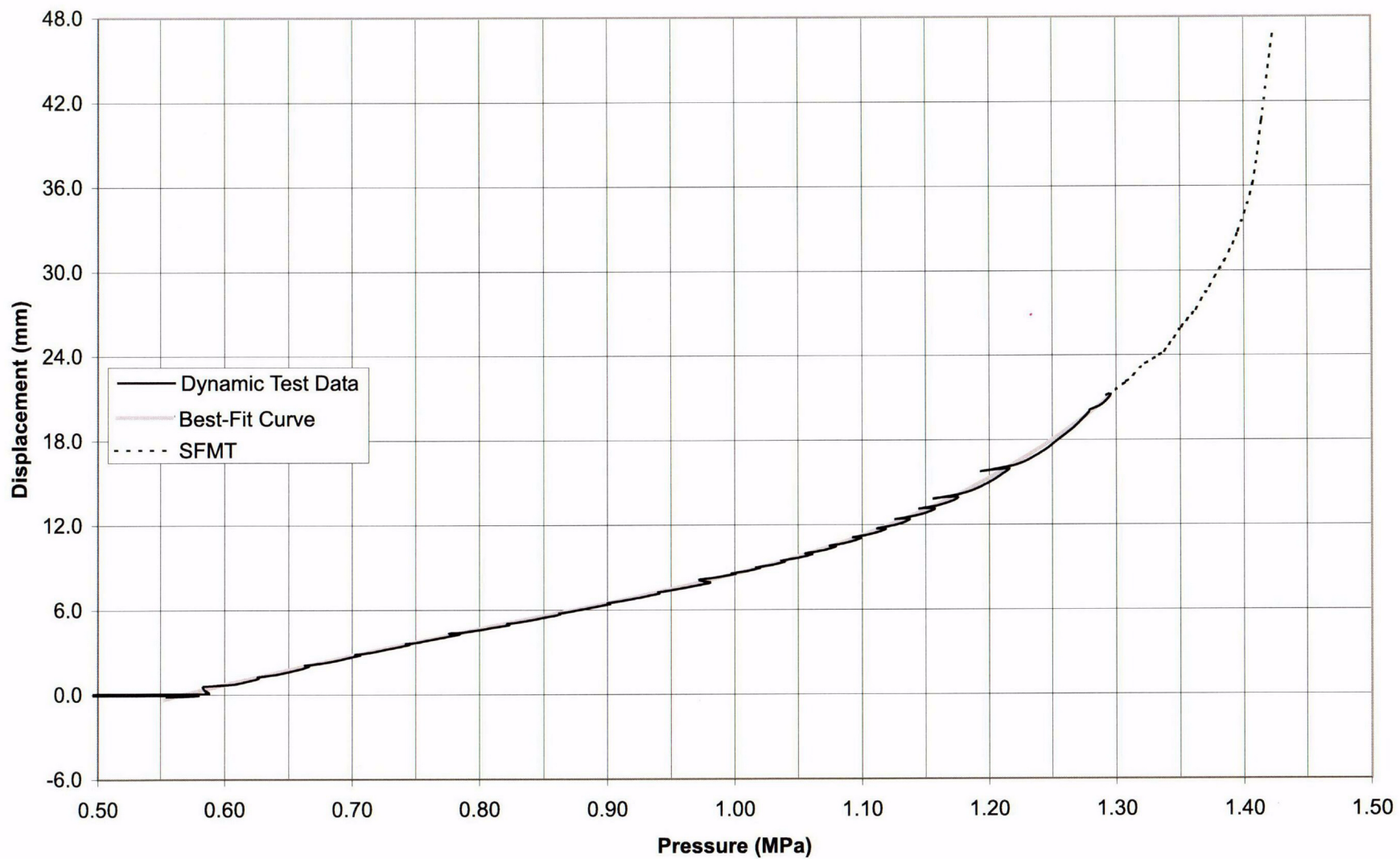


Figure 8-59. PCCV - Radial Displacement; 135, 4.68m, Gage DT-R-Z5-01

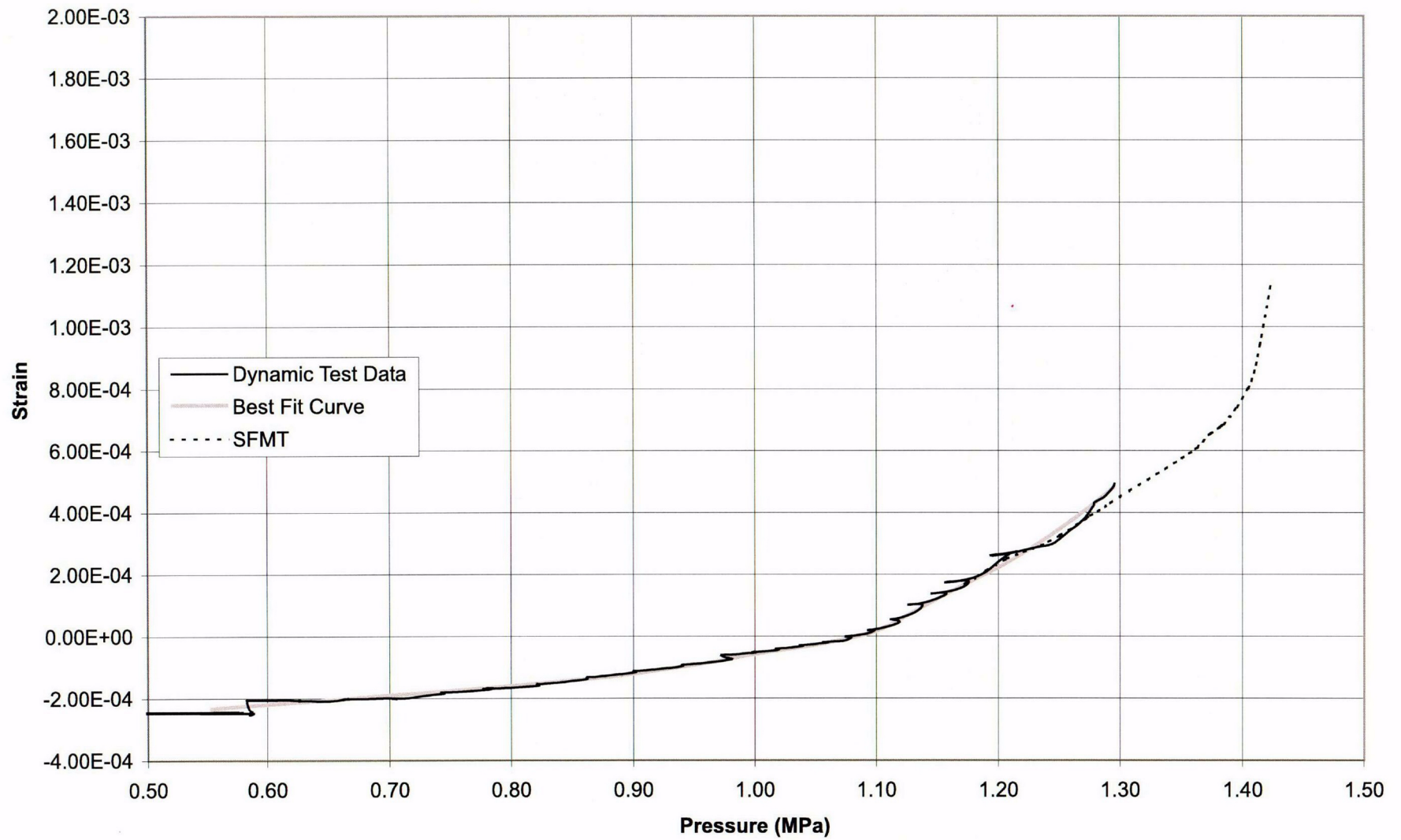


Figure 8-60. PCCV Liner Meridional Strain; 135, 6.2 m, Gage LSI-M-Z06-01



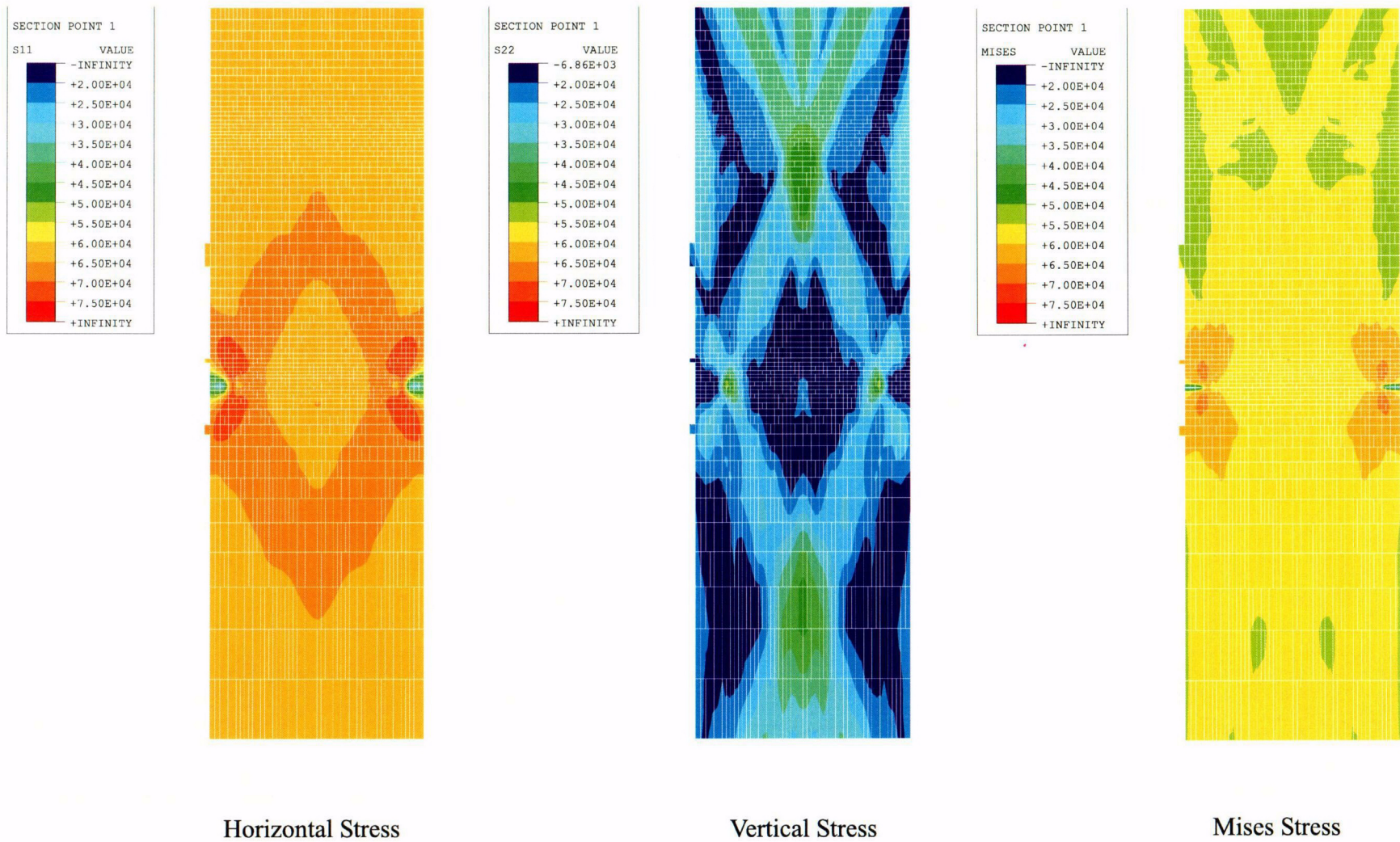


Figure 8-61. PCCV Liner Model, Liner Seam Rat-Hole Study Case 1, Stress Contour, Analysis To 3.4 Pd  
(Stresses in psi; Multiply by 0.00690 for MPa)



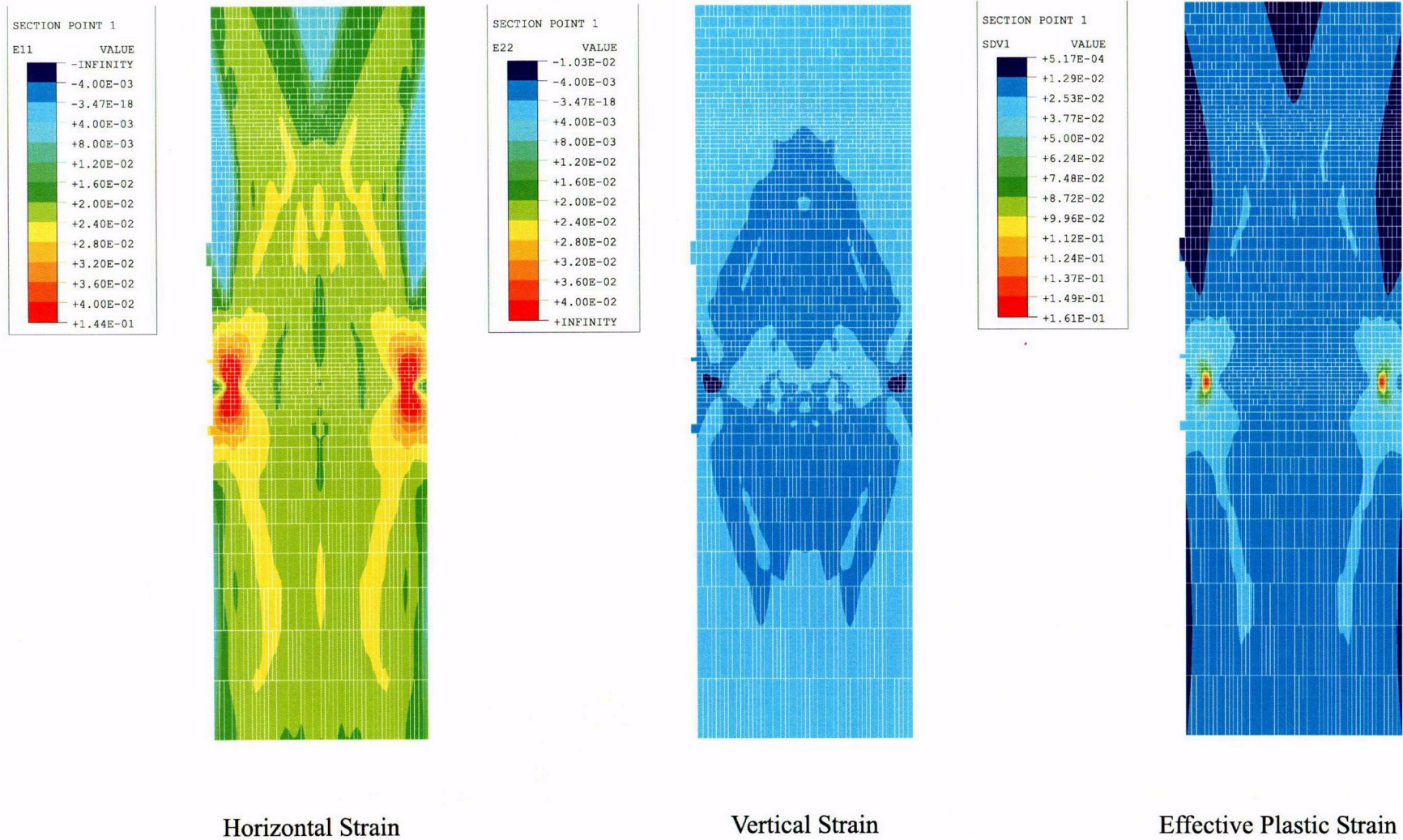


Figure 8-62. PCCV Liner Model, Liner Seam Rat-Hole Study Case 1, Strain Contour, Analysis To 3.4 Pd



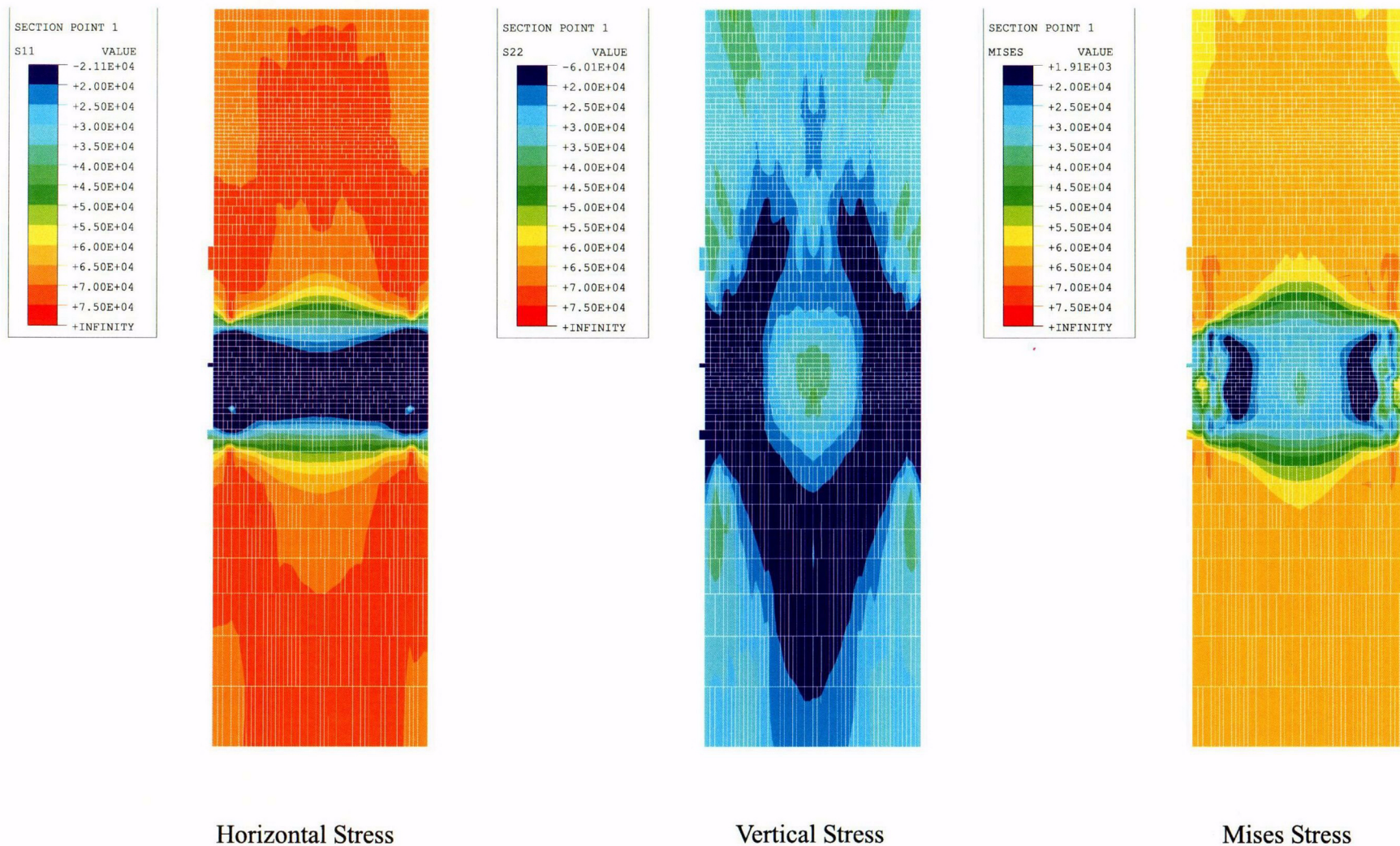


Figure 8-63. PCCV Liner Model, Liner Seam Rat-Hole Study Case 1, Stress Contour, Analysis To 3.6 Pd  
(Stresses in psi; Multiply by 0.00690 for MPa)

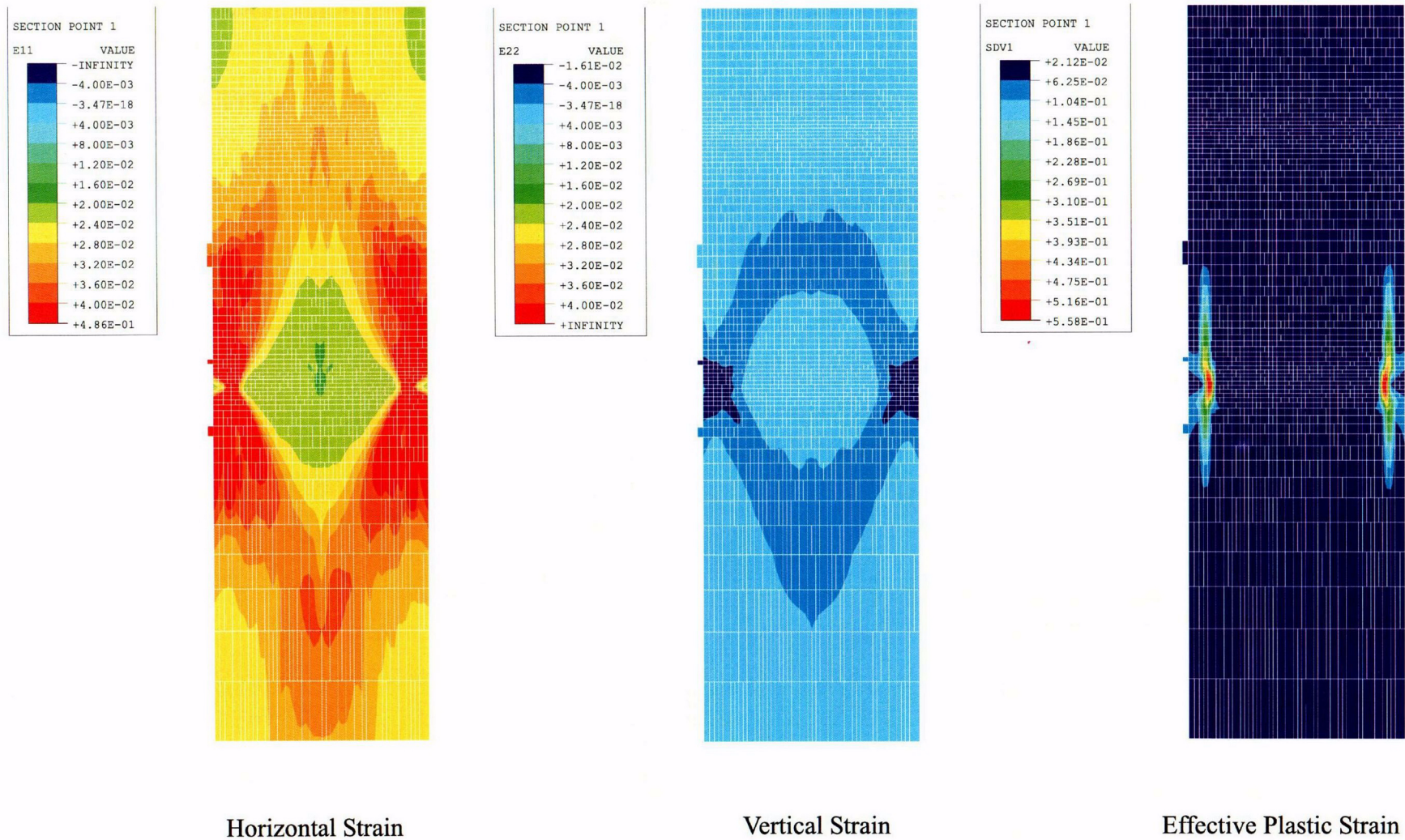


Figure 8-64. PCCV Liner Model, Liner Seam Rat-Hole Study Case 1, Strain Contour, Analysis To 3.6 Pd



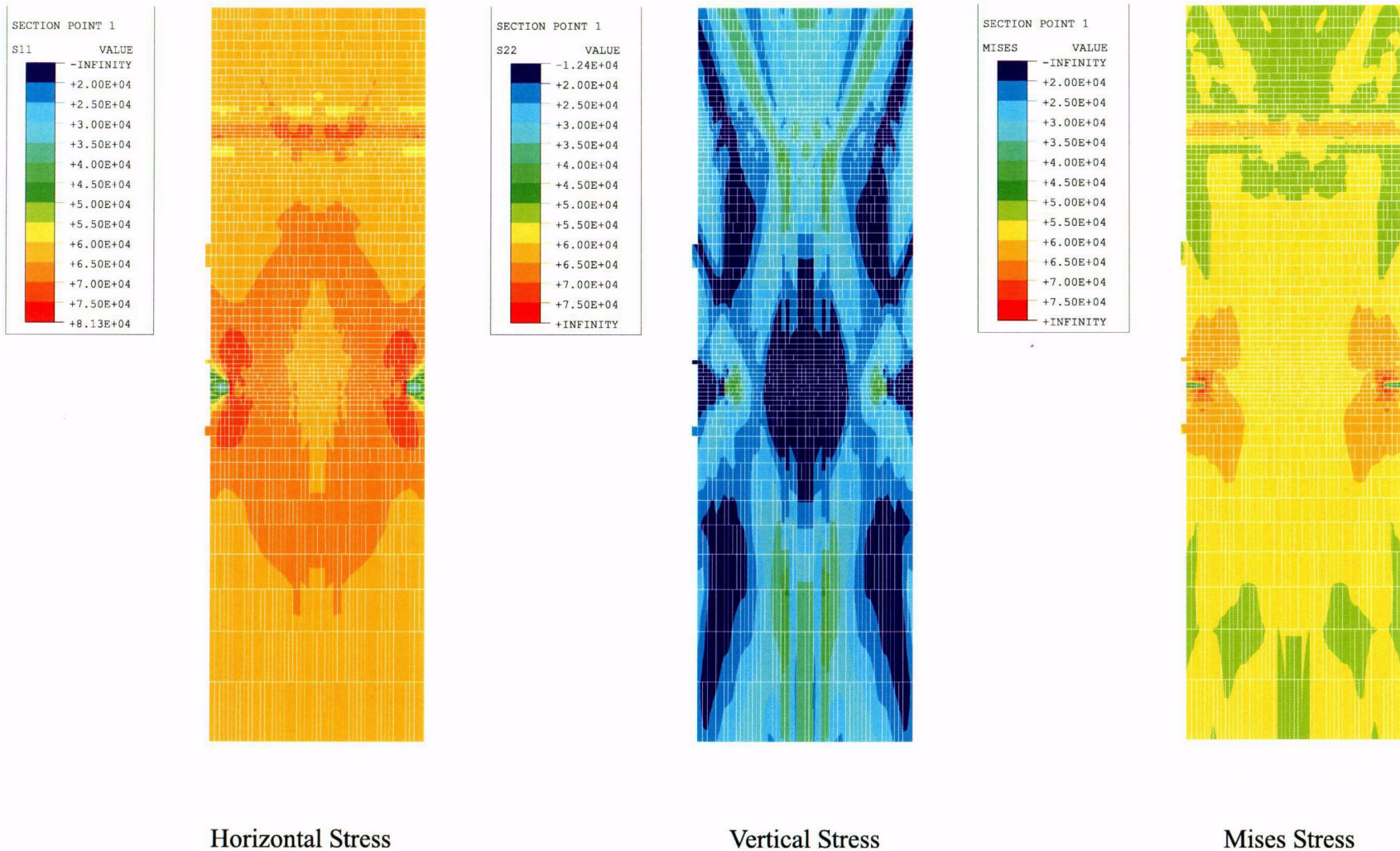


Figure 8-65. PCCV Liner Model, Liner Seam Rat-Hole Study Case 4, Stress Contour, Analysis To 3.4 Pd  
(Stresses in psi; Multiply by 0.00690 for MPa)

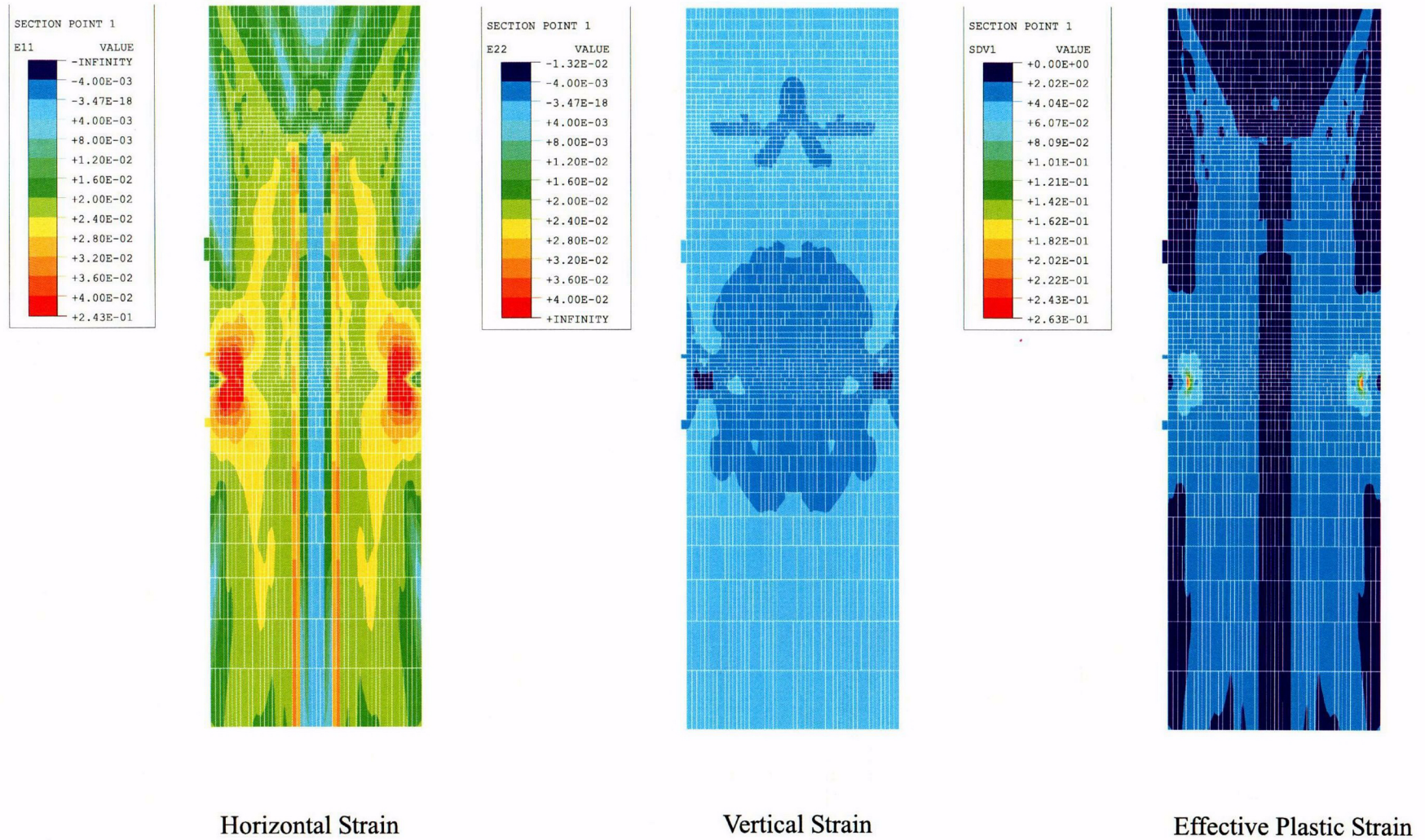


Figure 8-66. PCCV Liner Model, Liner Seam Rat-Hole Study Case 4, Strain Contour, Analysis To 3.4 Pd