

Figure 7-36. Liner Hoop Strains, Posttest Analysis Case E, at 2.8 Pd



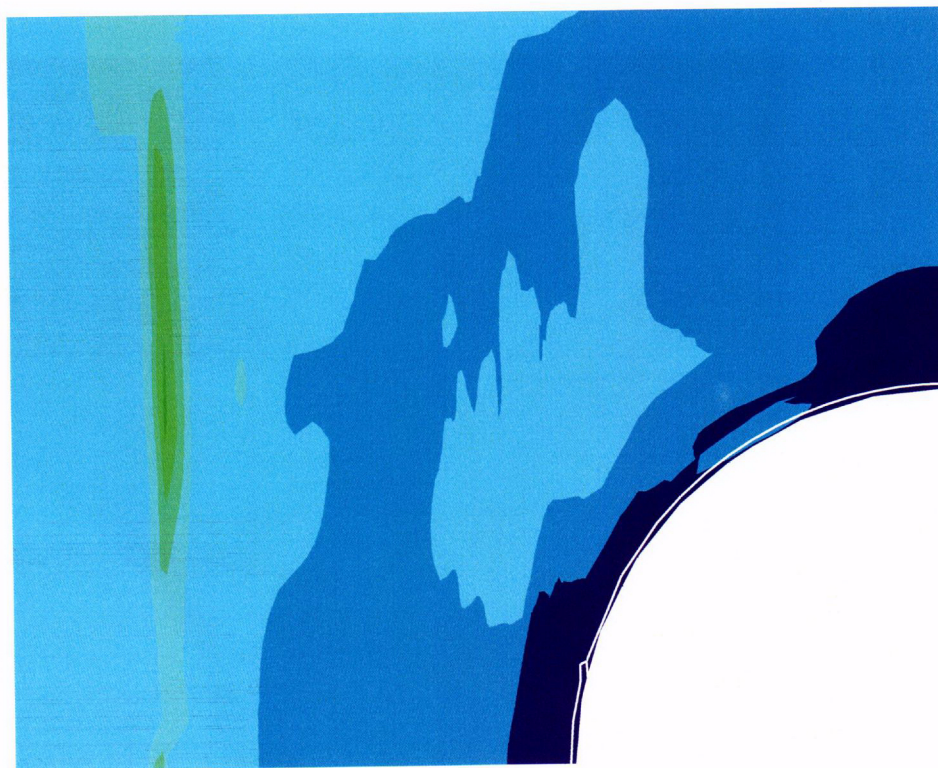
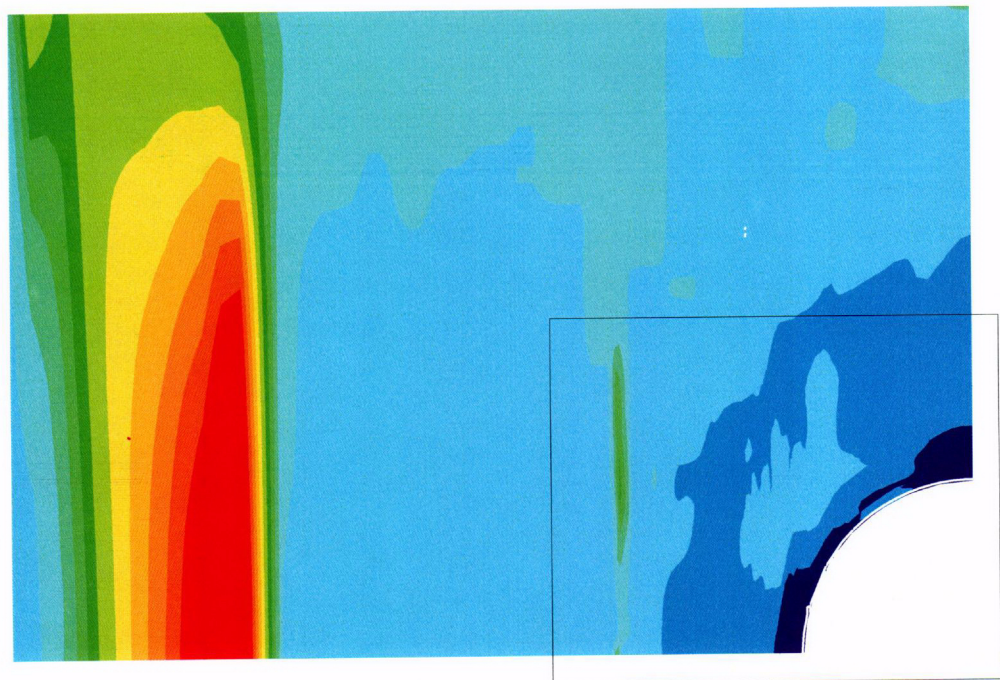
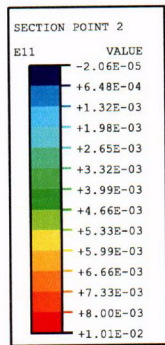


Figure 7-37. Liner Hoop Strains, Posttest Analysis Case E, at 3.0 Pd



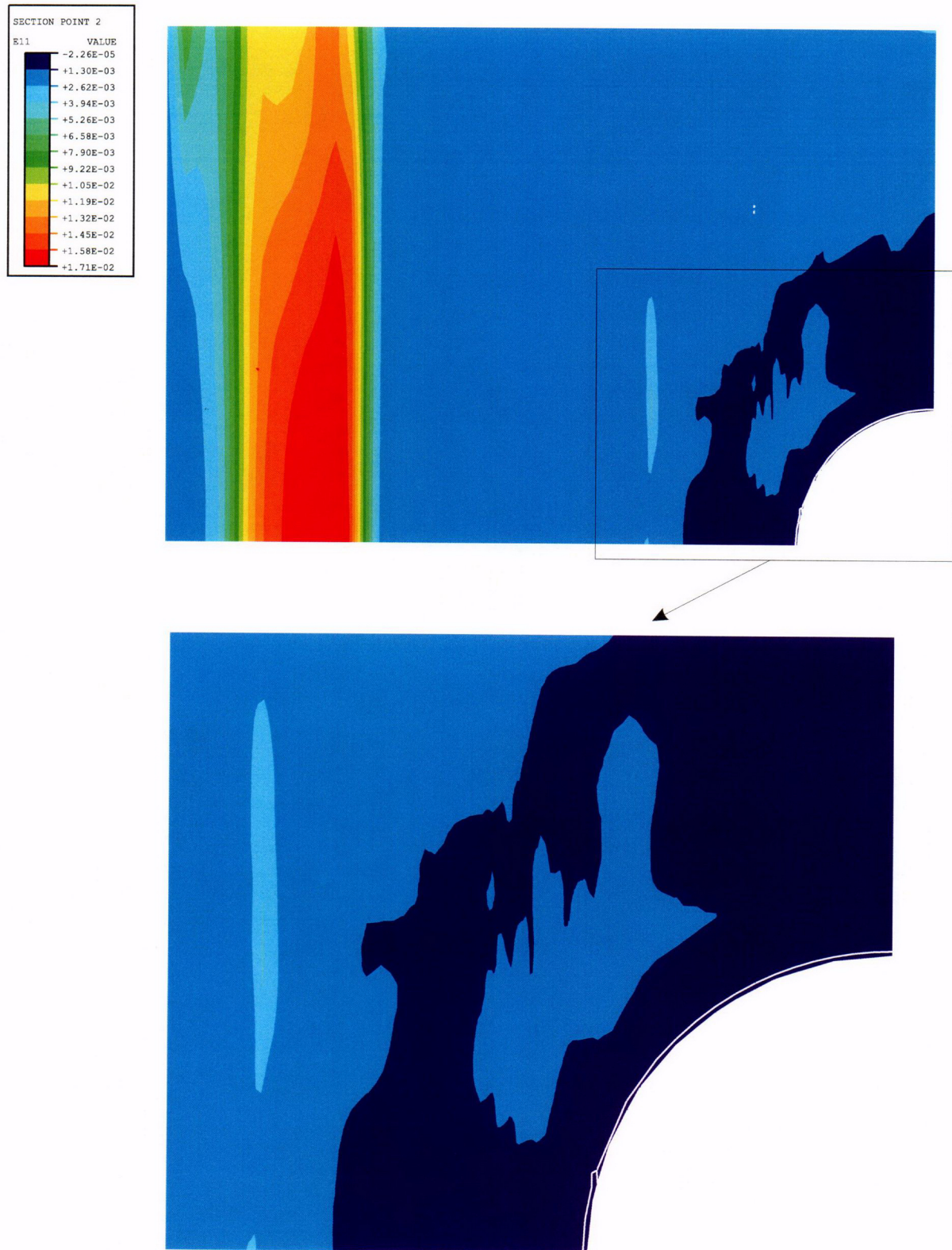
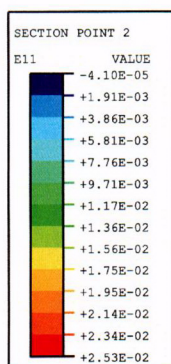
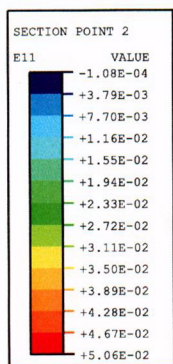
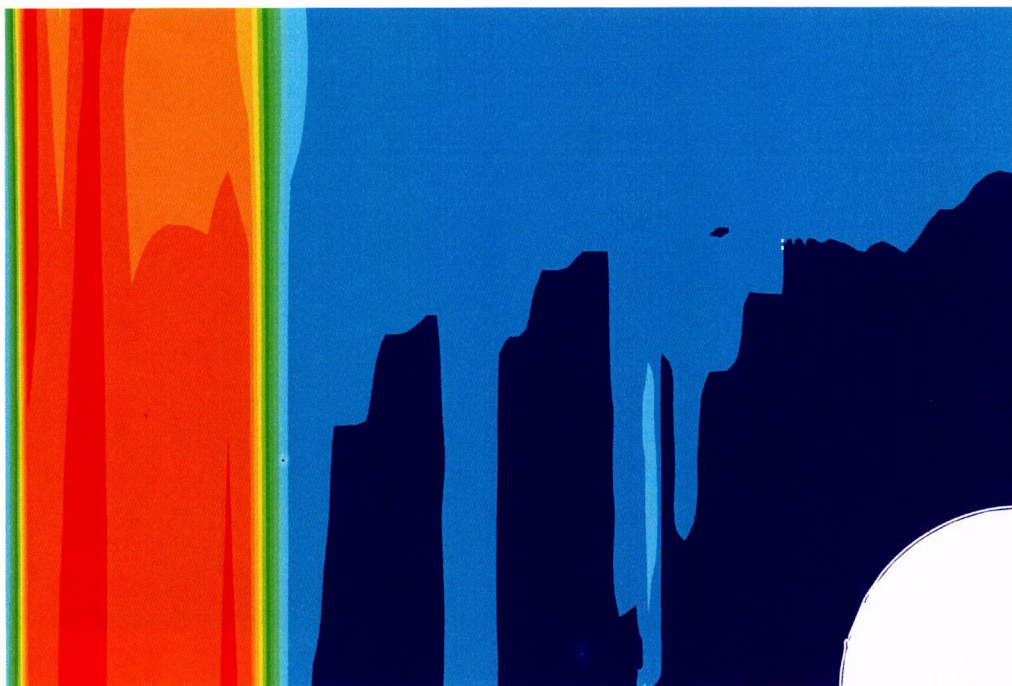


Figure 7-38. Liner Hoop Strains, Posttest Analysis Case E, at 3.2 Pd





P = 3.5 Pd



P = 3.6 Pd

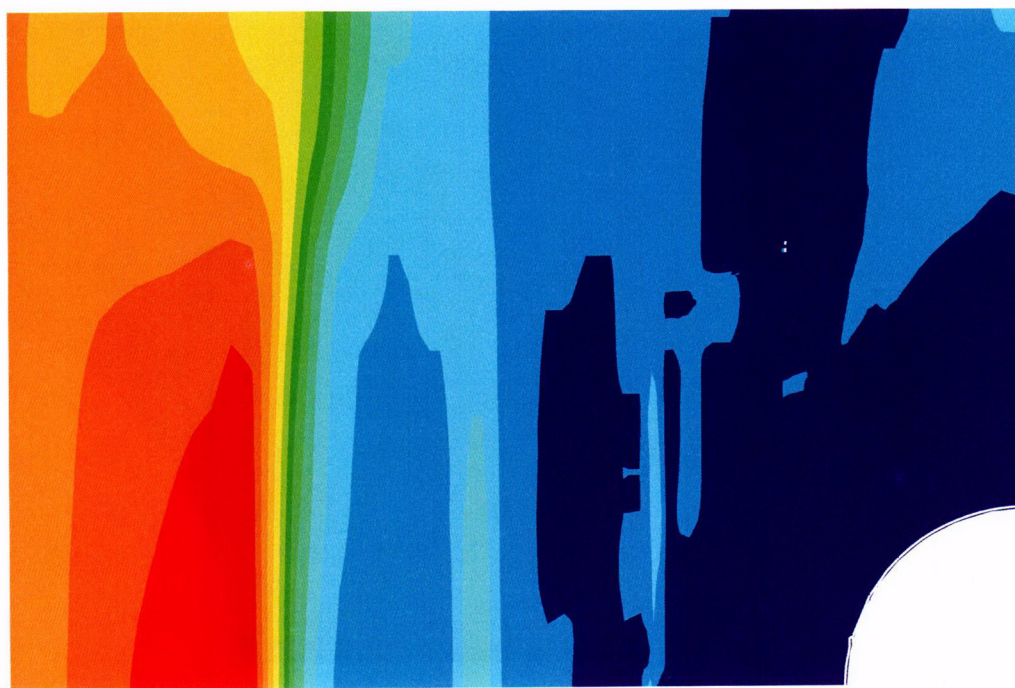


Figure 7-39. Liner Hoop Strains, Posttest Analysis Case E, at 3.5 Pd and 3.6 Pd



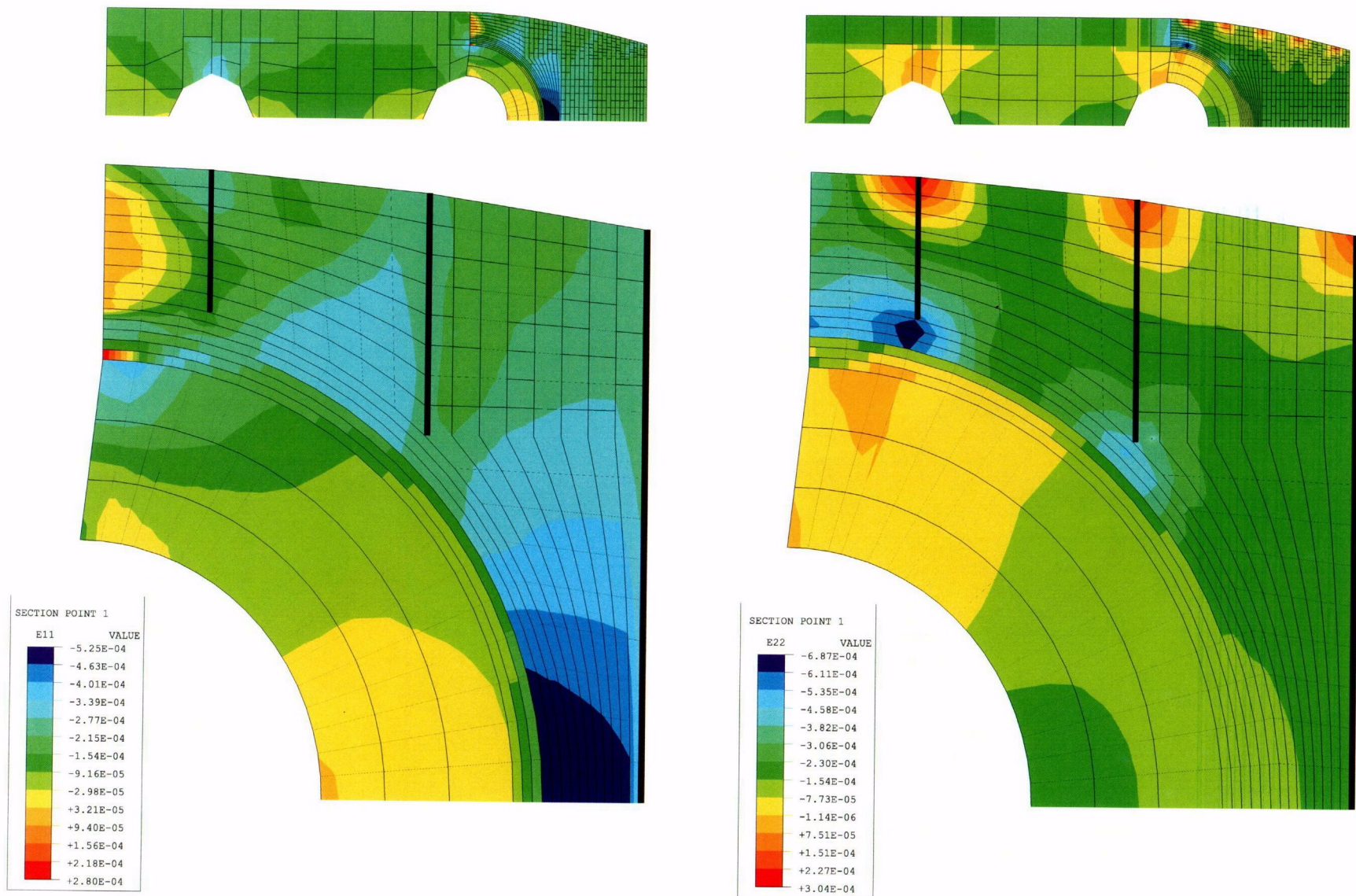


Figure 7-40. Hoop (Left) and Meridional (Right) Strains for Posttest M/S Analysis at Prestress



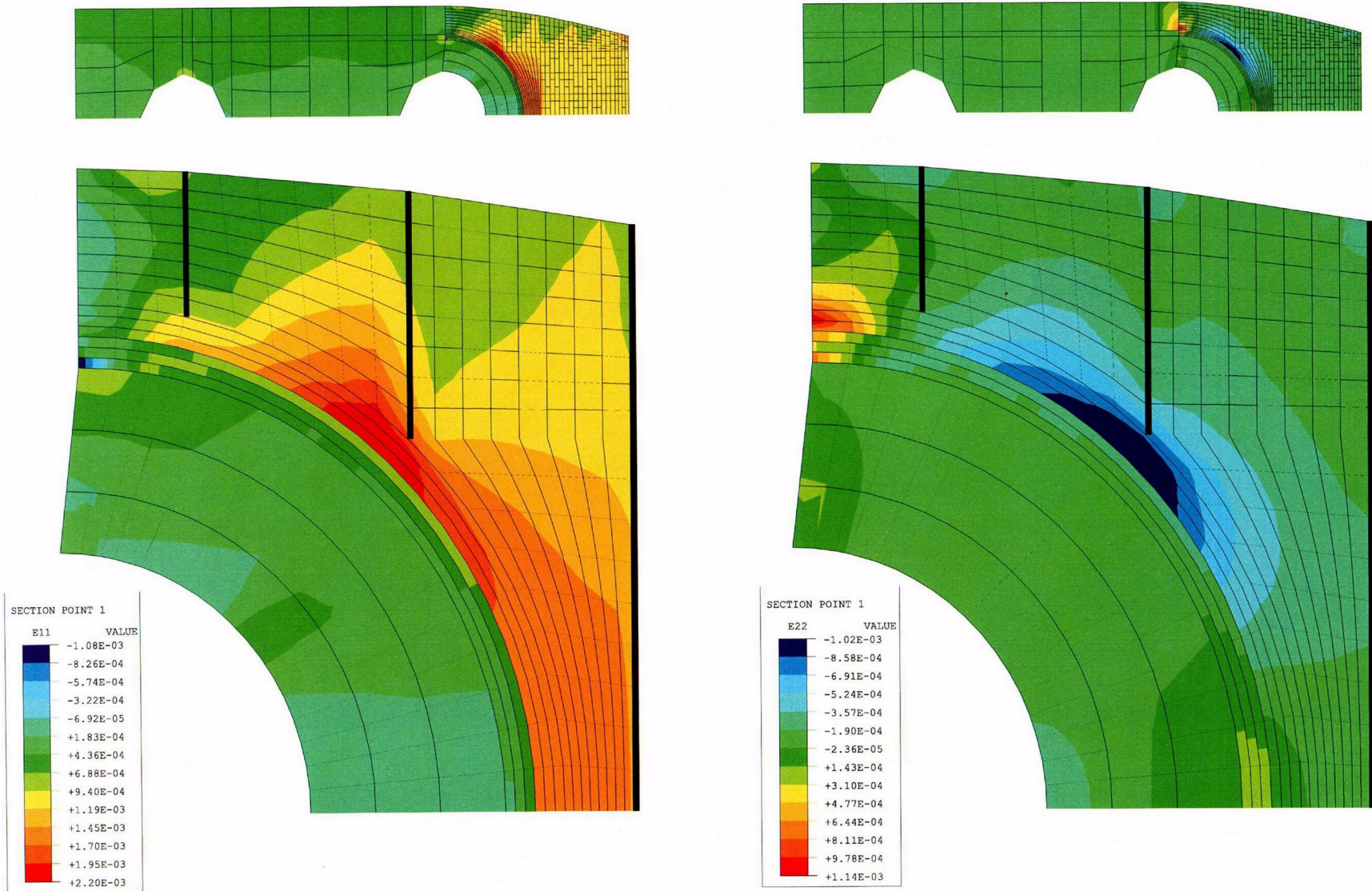


Figure 7-41. Hoop (Left) and Meridional (Right) Strains for Posttest M/S Analysis at  $P = 2.0 \text{ Pd}$



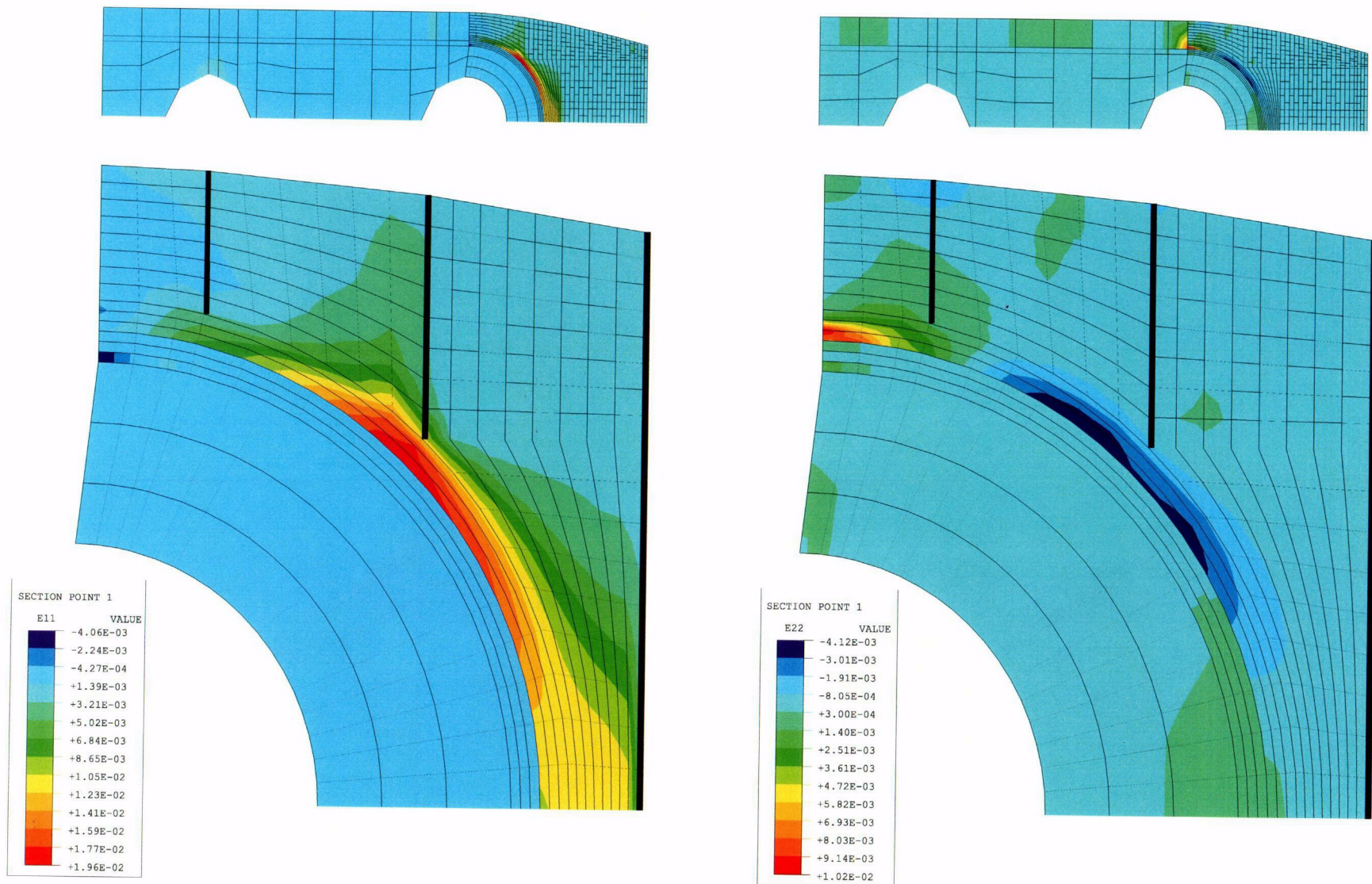


Figure 7-42. Hoop (Left) and Meridional (Right) Strains for Posttest M/S Analysis at  $P = 3.0 \text{ Pd}$



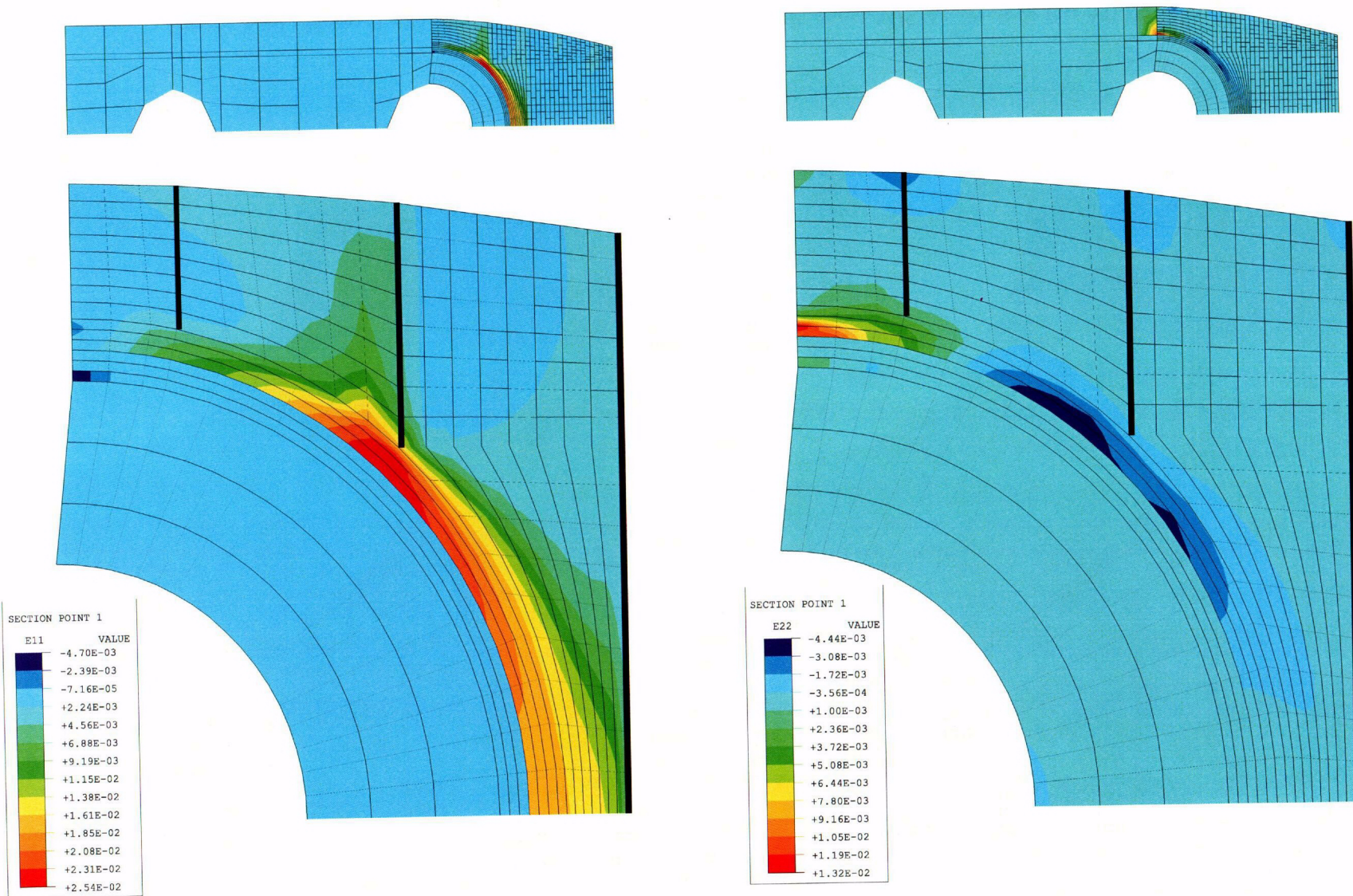


Figure 7-43. Hoop (Left) and Meridional (Right) Strains for Posttest M/S Analysis at  $P = 3.3 P_d$



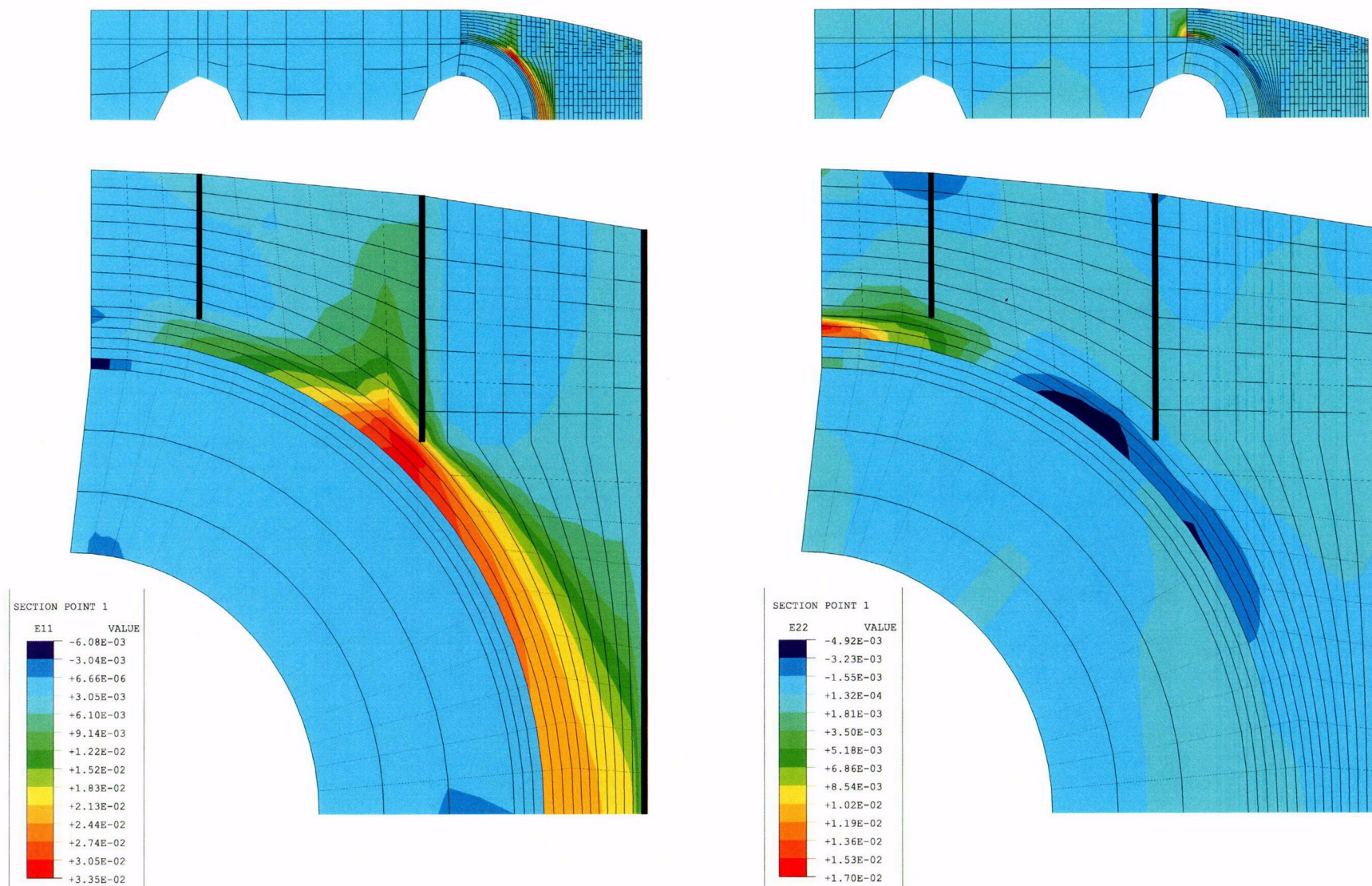


Figure 7-44. Hoop (Left) and Meridional (Right) Strains for Posttest M/S Analysis at  $P = 3.5 \text{ Pd}$







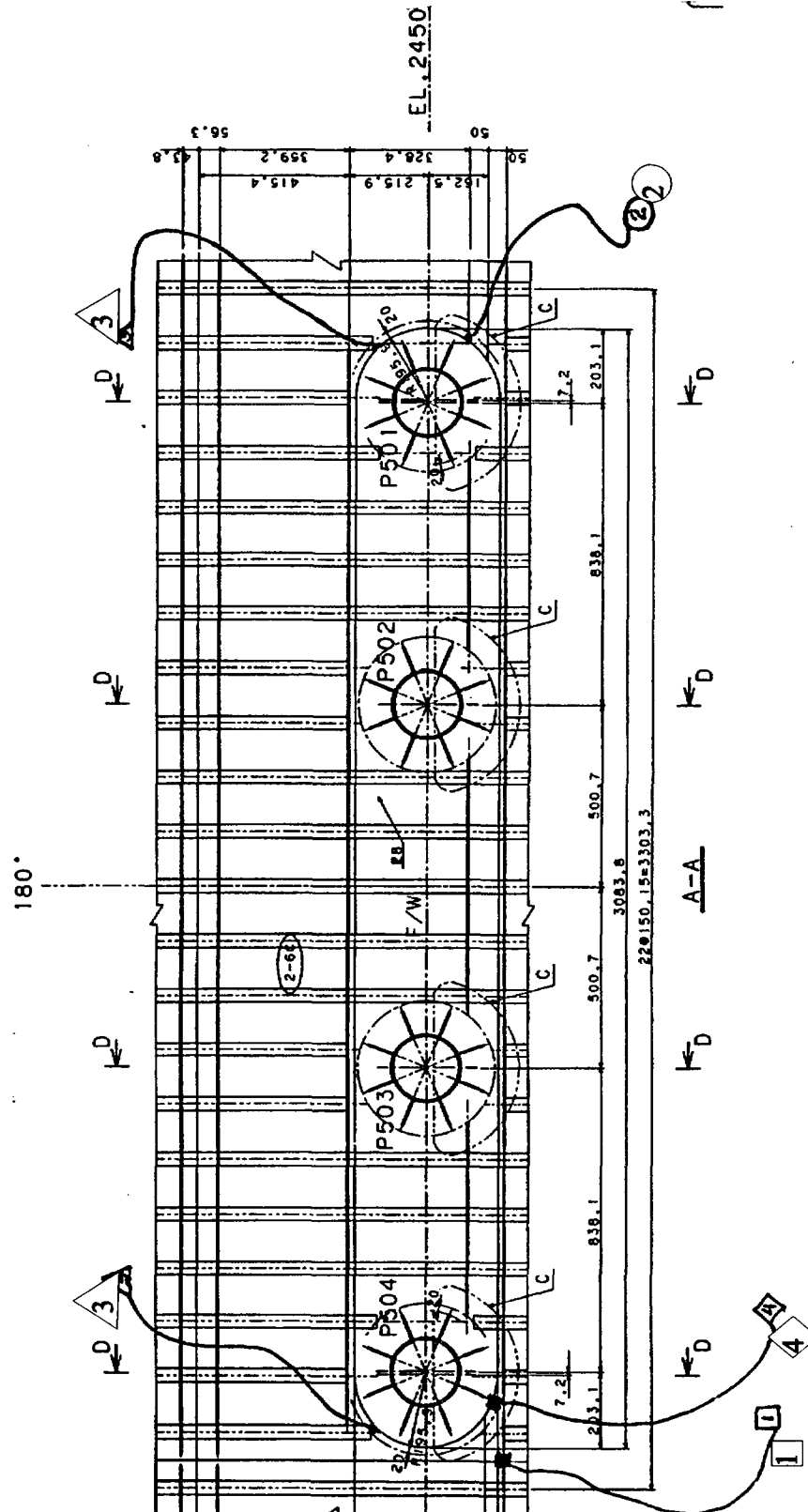
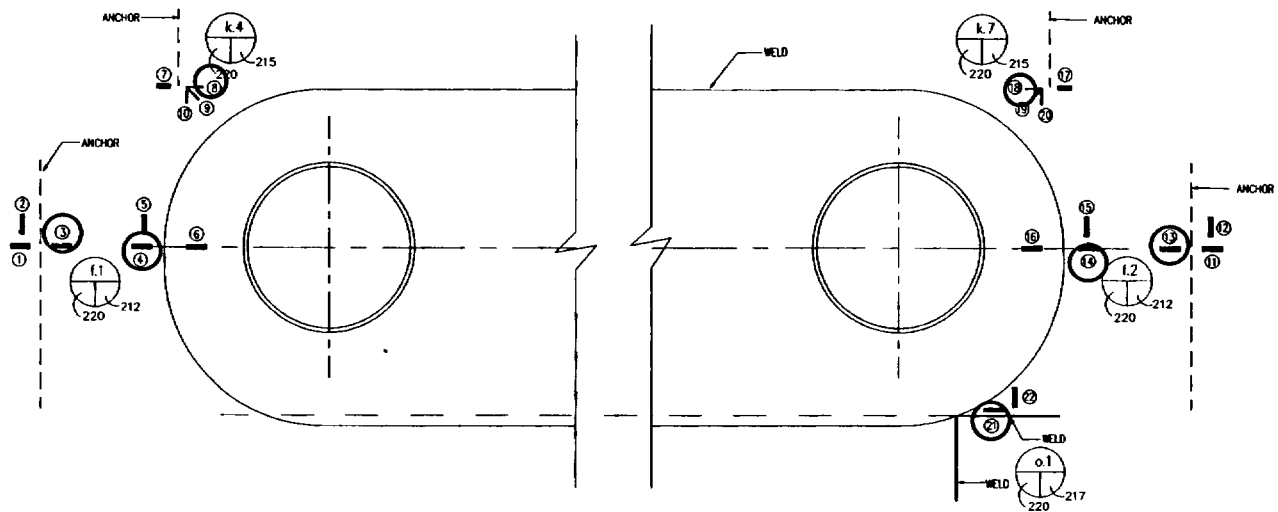
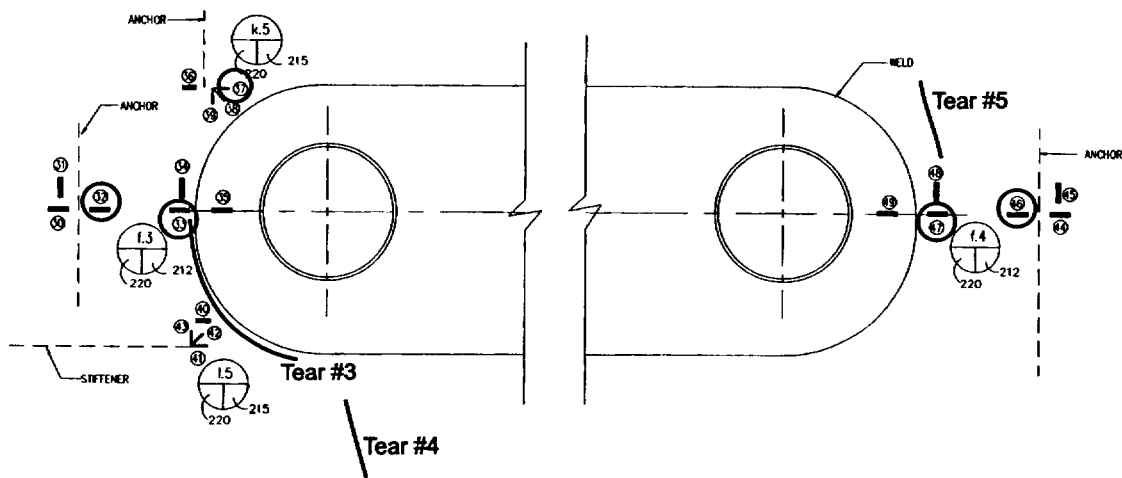


Figure 7-46. Strain Concentration Type 1, 2, 3, and 4 Near F/W Penetrations (from [1])





**M/S - Inside View**



**F/W - Inside View**

**Figure 7-47. Strain Gage Locations Near the M/S and F/W Penetrations**



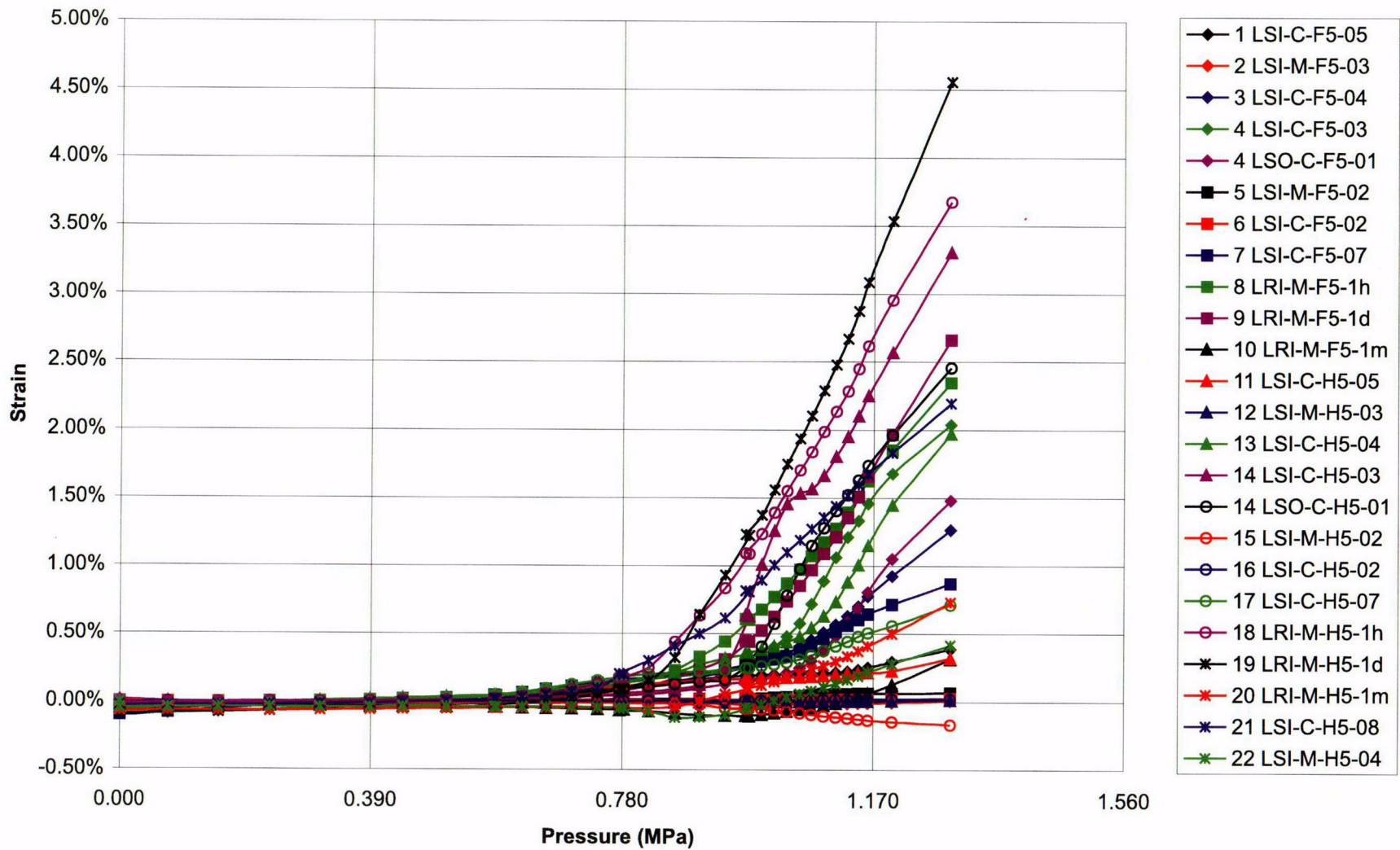


Figure 7-48. Liner Strain Histories Measured by the Gages Near the M/S Penetrations



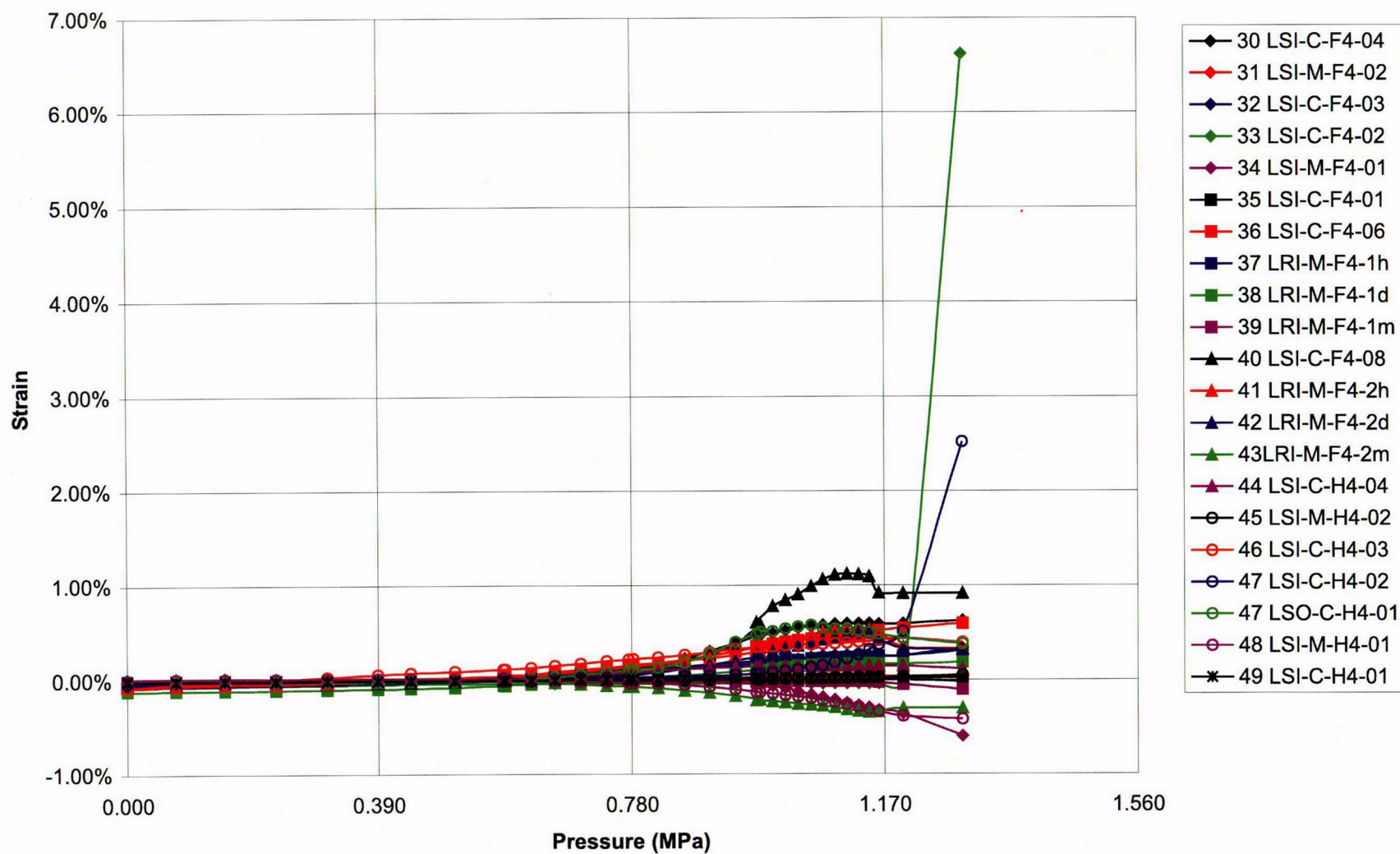


Figure 7-49. Linear Strain Histories Measured by the Gages Near the F/W Penetrations