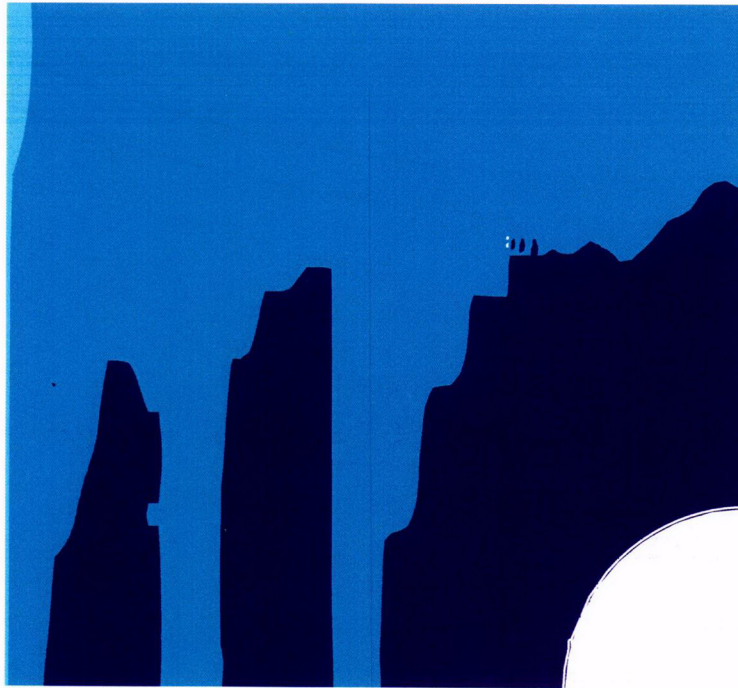
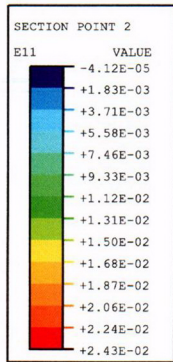


P = 3.5 Pd



P = 3.6 Pd

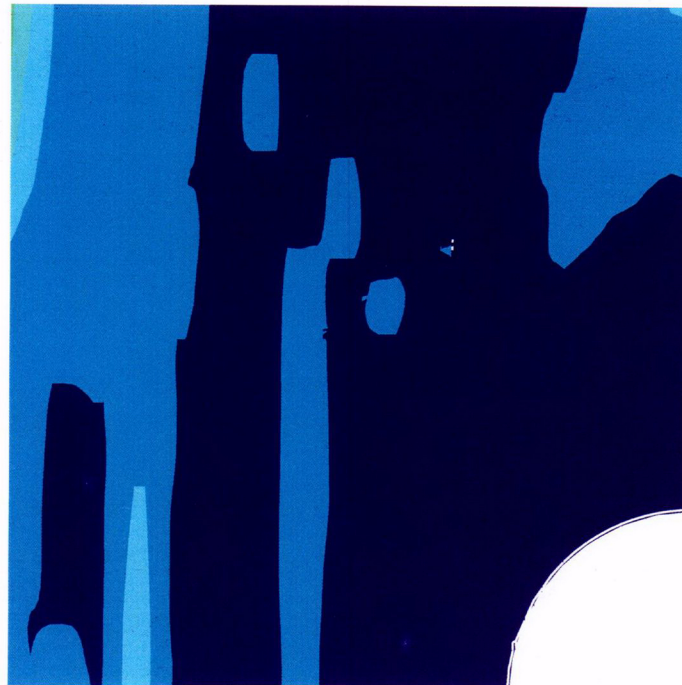
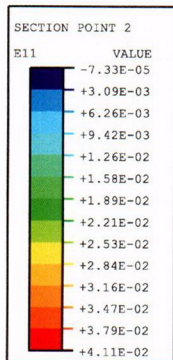


Figure 7-22. Liner Hoop Strains, Posttest Analysis Case B, at 3.5 Pd and 3.6 Pd

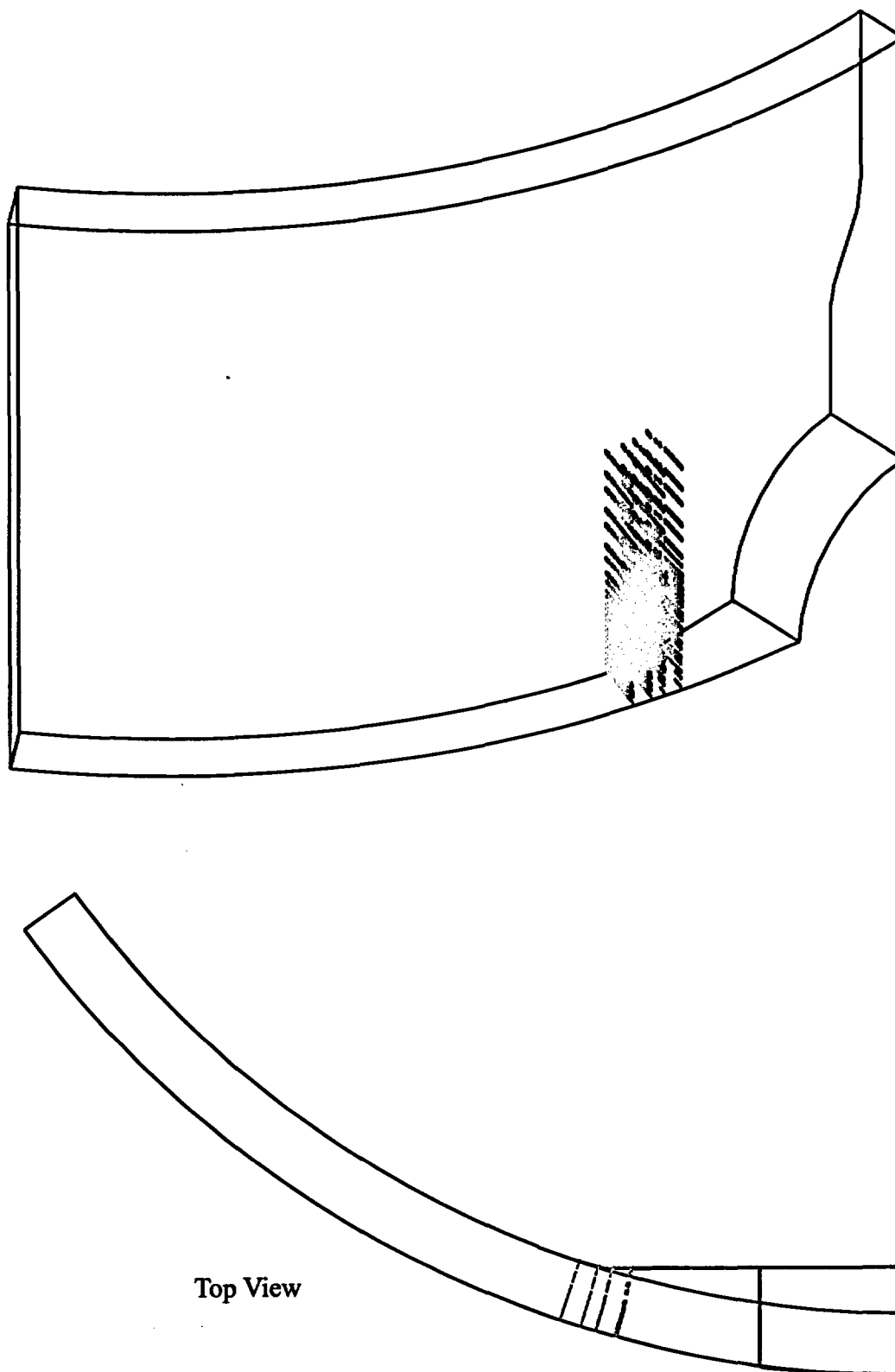


Figure 7-23. Pre-Cracking along Edge of E/H Embossment

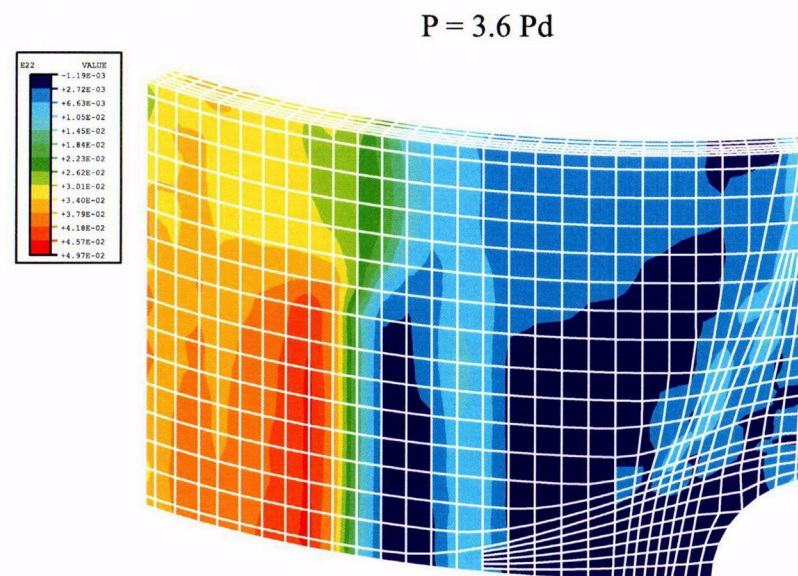
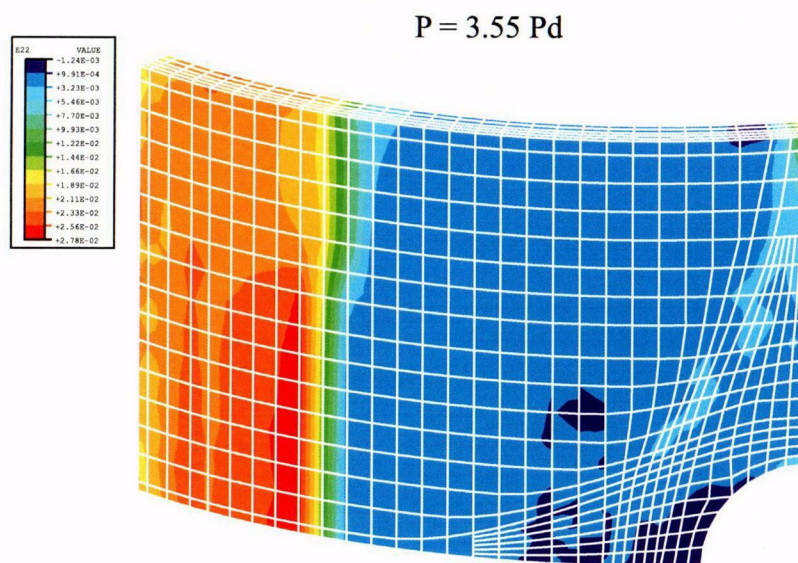
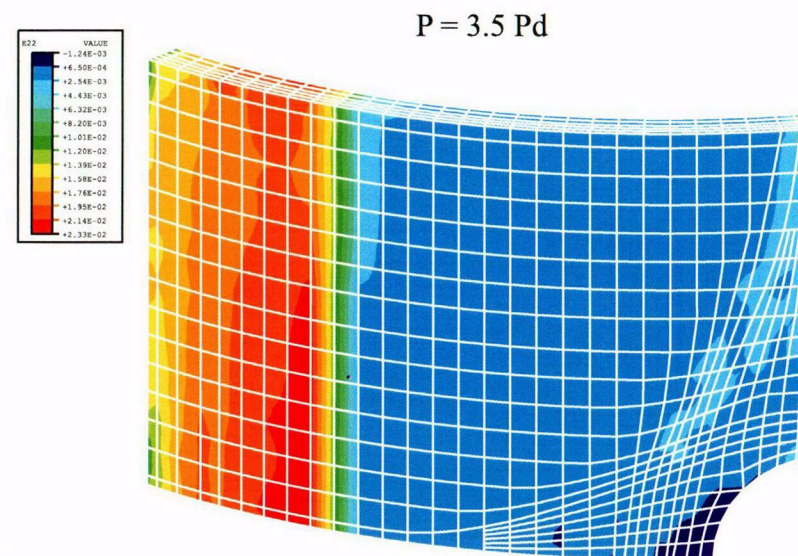
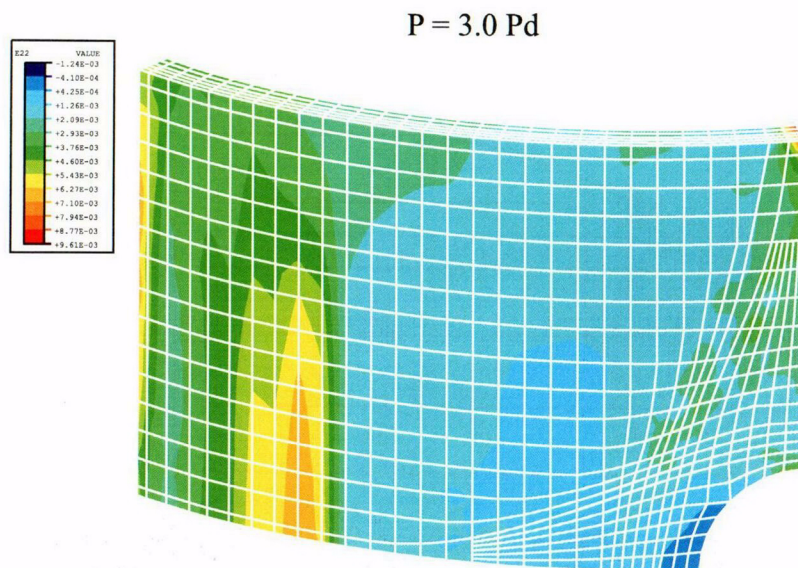


Figure 7-24. Concrete Hoop Strain Contours, Posttest Analysis Case C

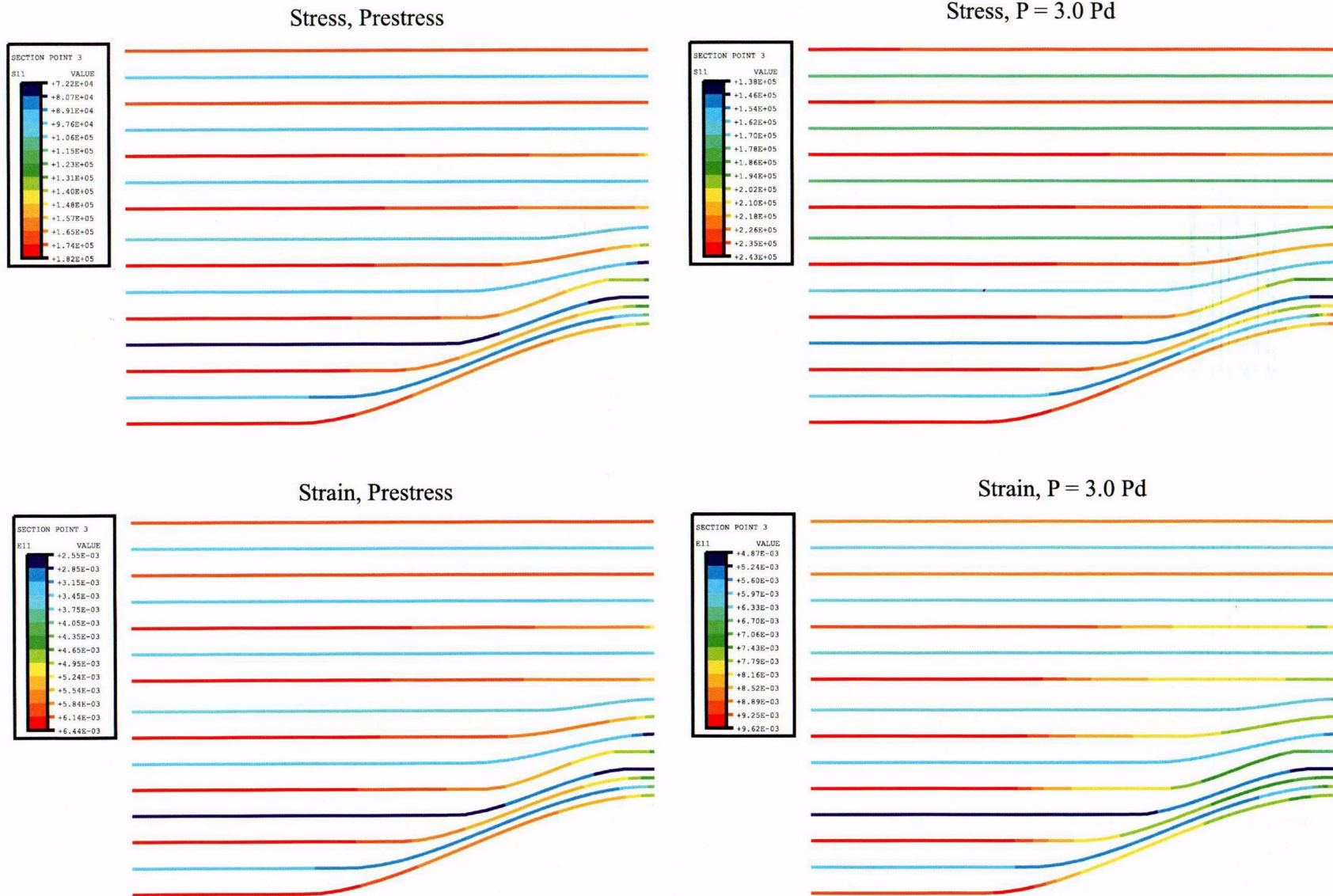


Figure 7-25. Hoop Tendon Stresses and Strains, Posttest Analysis Case C, at Prestress and 3.0 Pd
 (Stresses in psi; Multiply by 0.00690 for MPa)

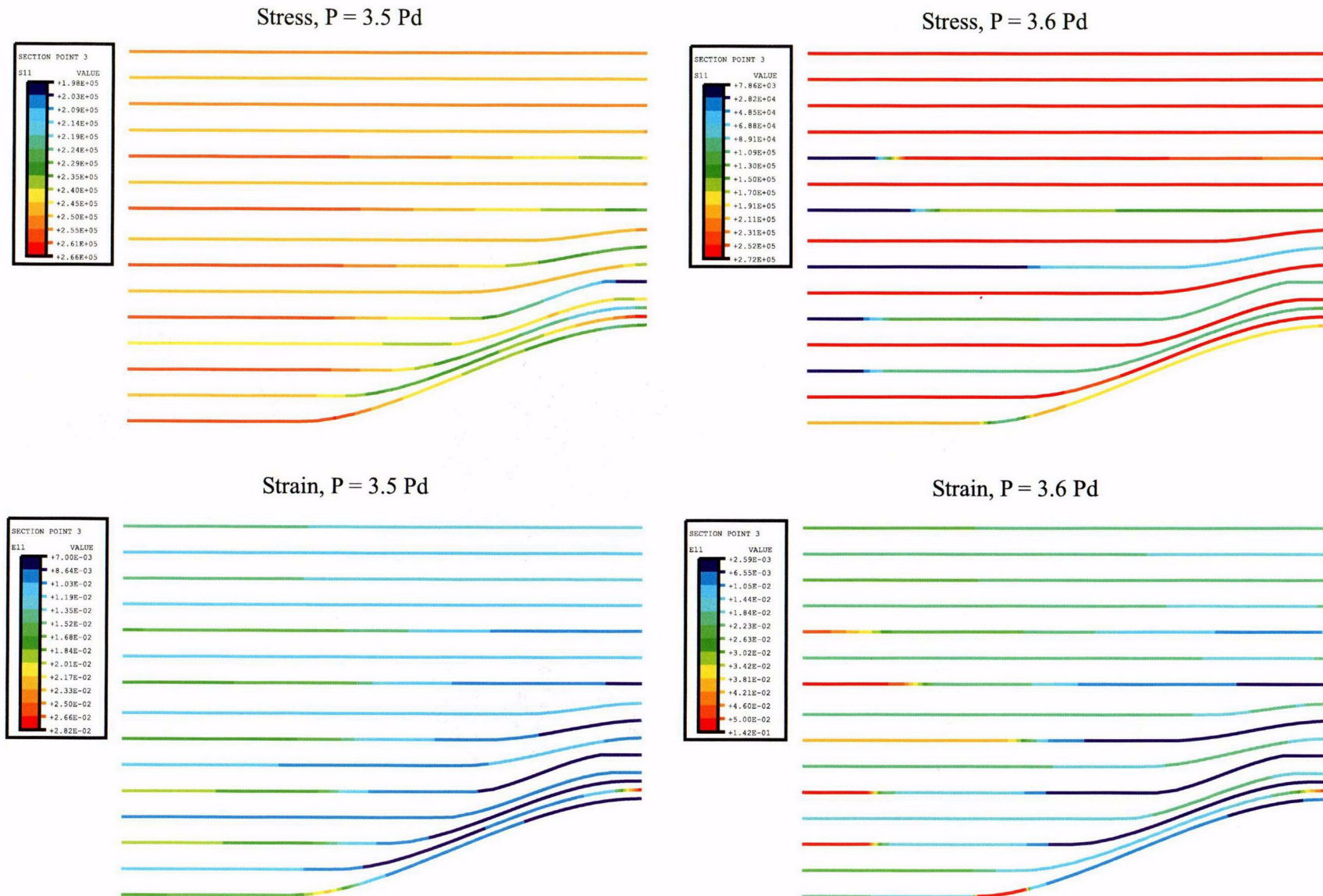


Figure 7-26. Hoop Tendon Stresses and Strains, Posttest Analysis Case C, at 3.5 Pd and 3.6 Pd
 (Stresses in psi; Multiply by 0.00690 for MPa)

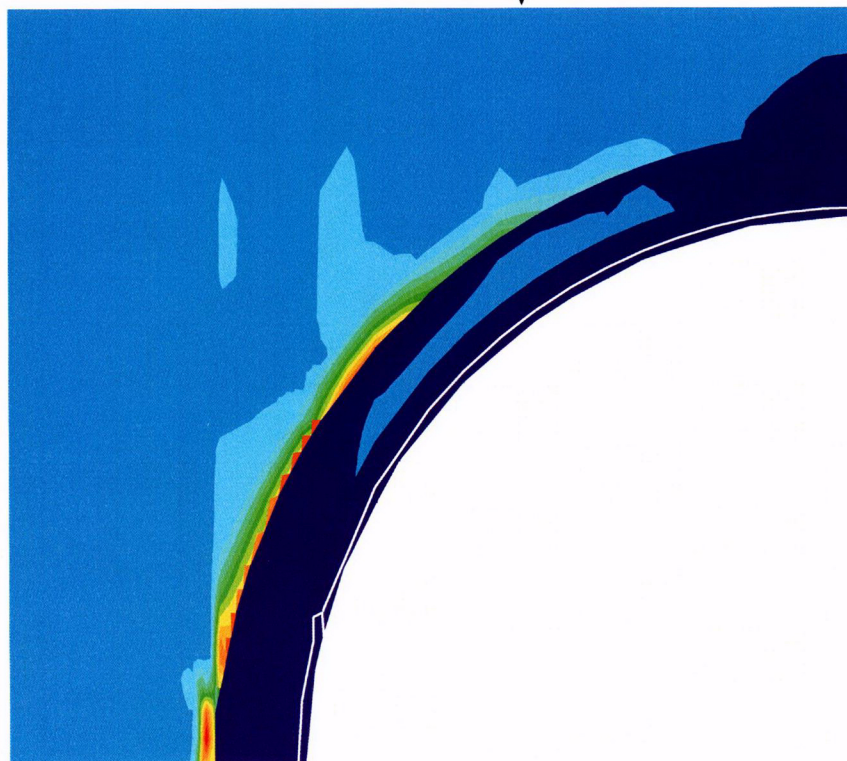
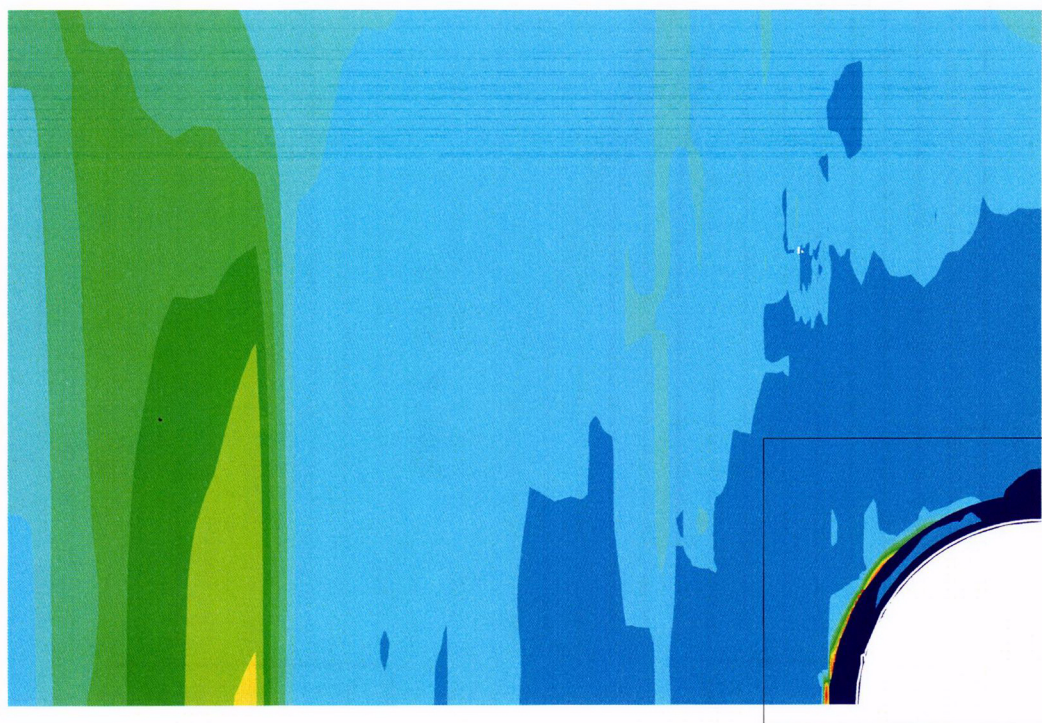
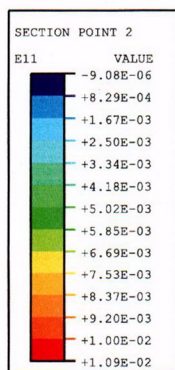


Figure 7-27. Liner Hoop Strains, Posttest Analysis Case C, at 3.0 Pd

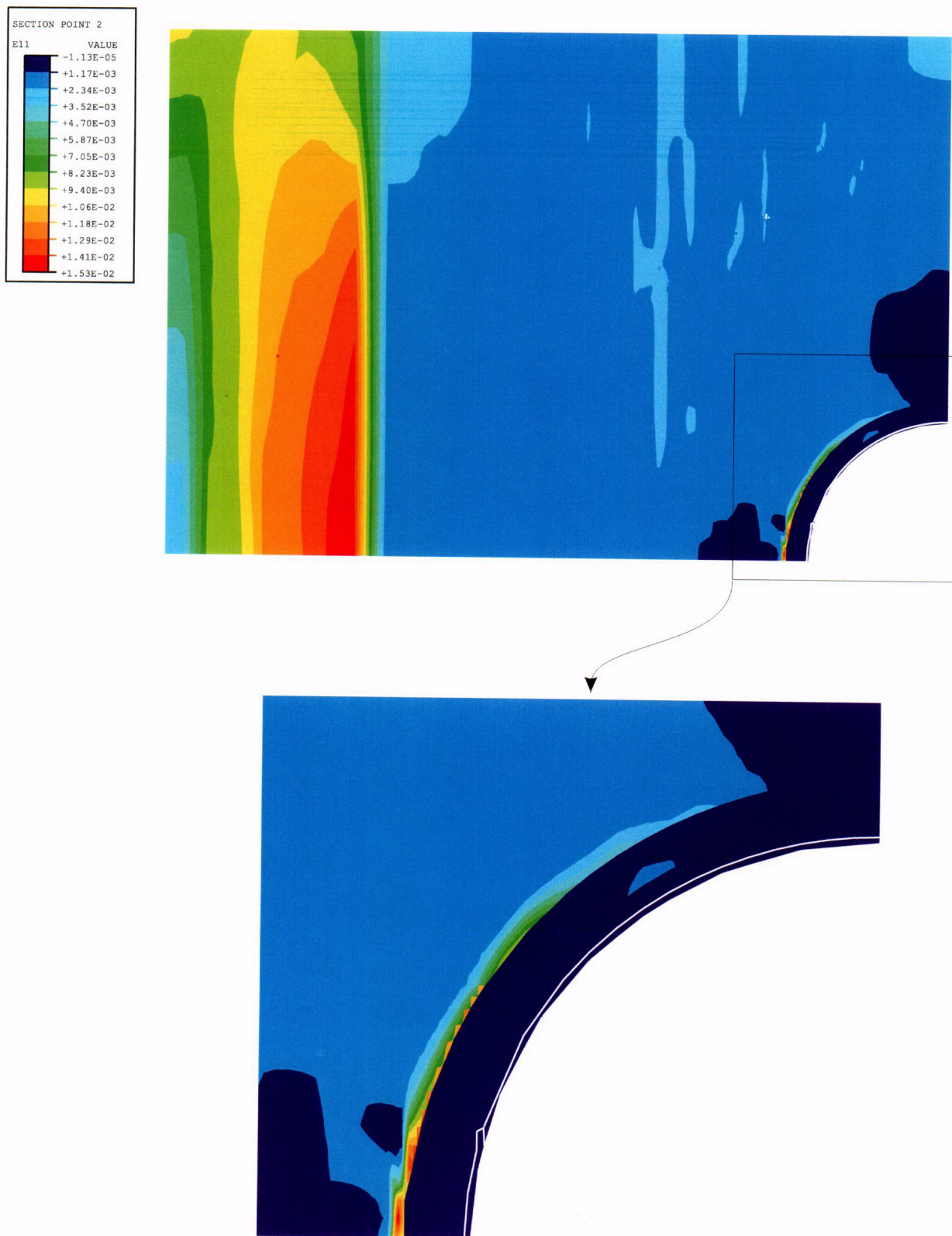
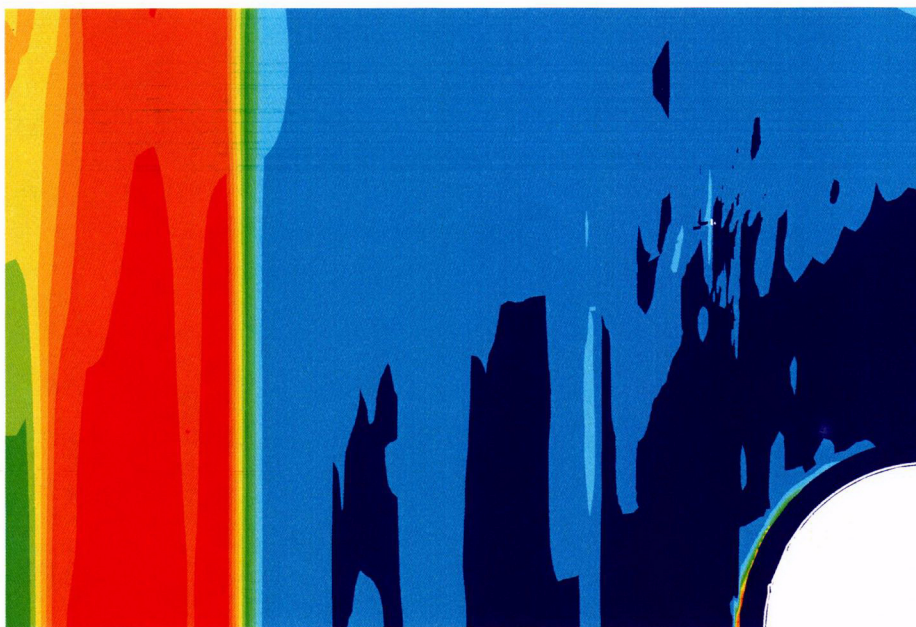
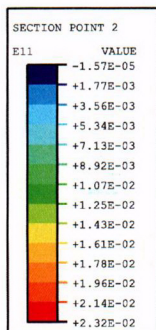


Figure 7-28. Liner Hoop Strains, Posttest Analysis Case C, at 3.2 Pd

P = 3.5 Pd



P = 3.6 Pd

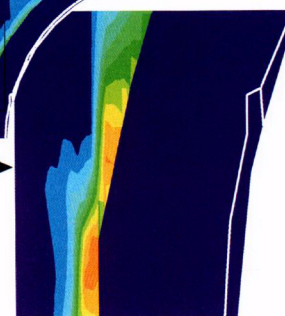
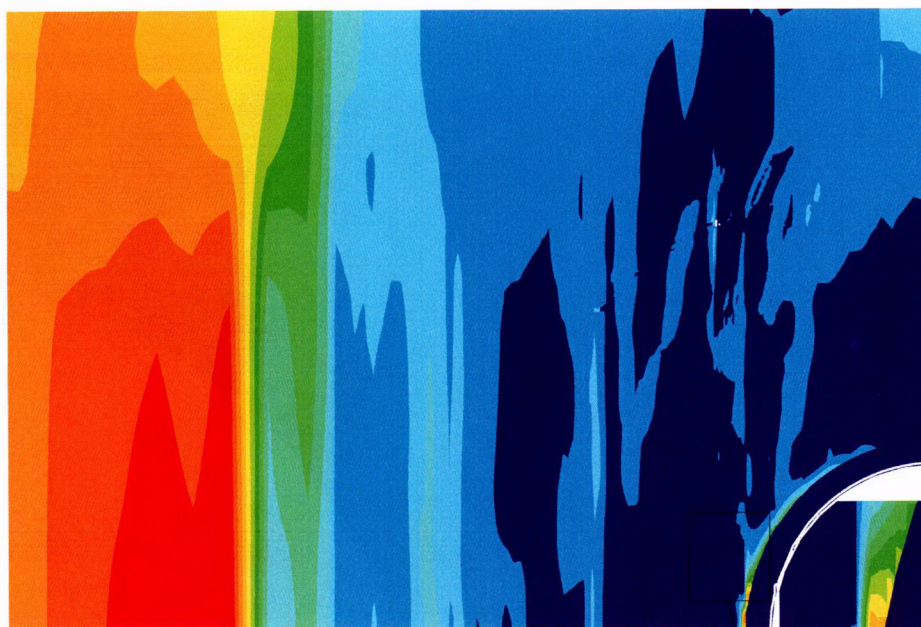
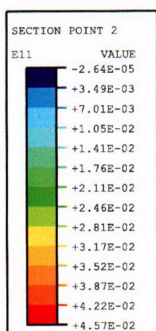


Figure 7-29. Liner Hoop Strains, Posttest Analysis Case C, at 3.5 Pd and 3.6 Pd

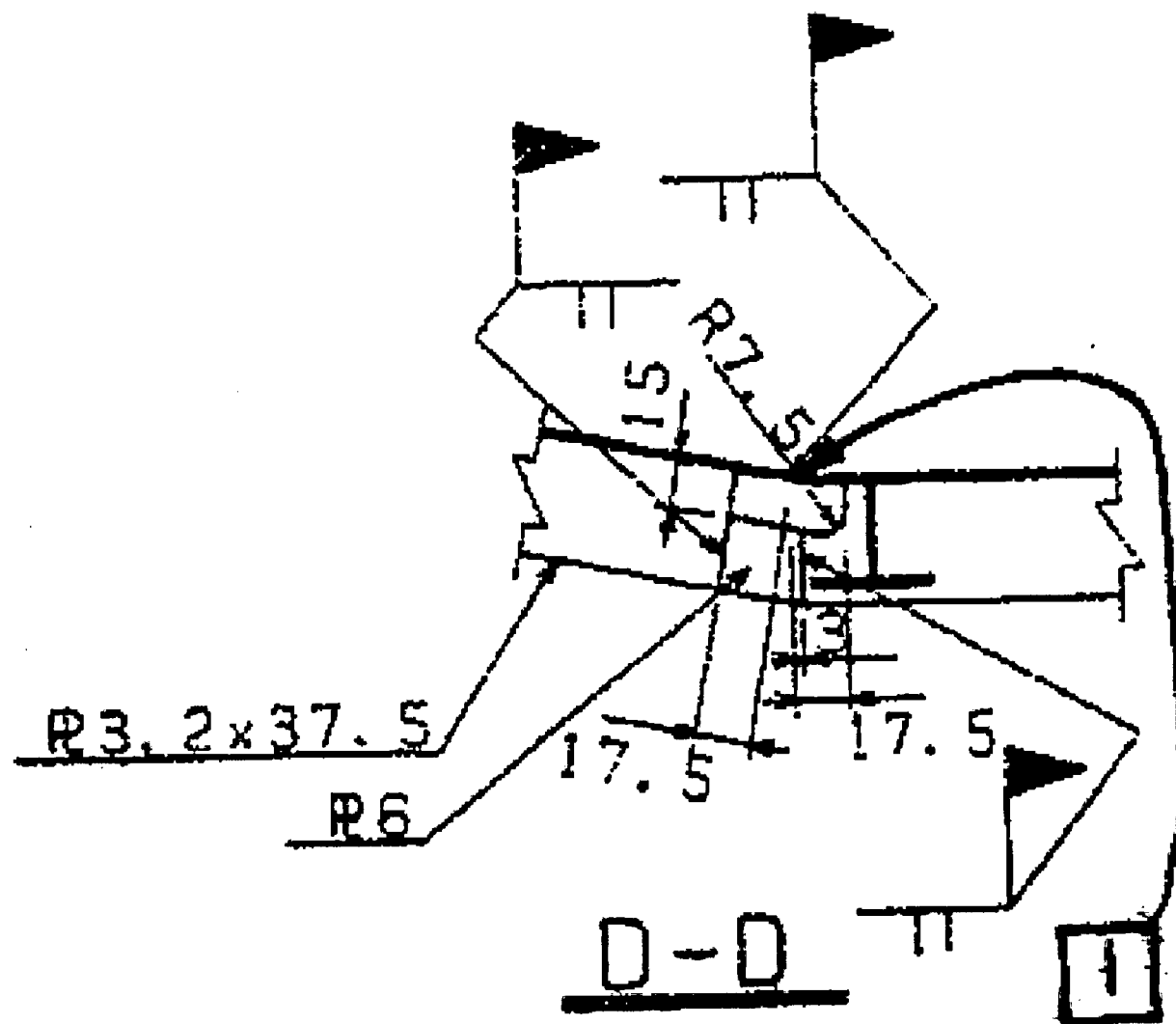


Figure 7-31. Liner Strain Concentration Rat-Hole Detail

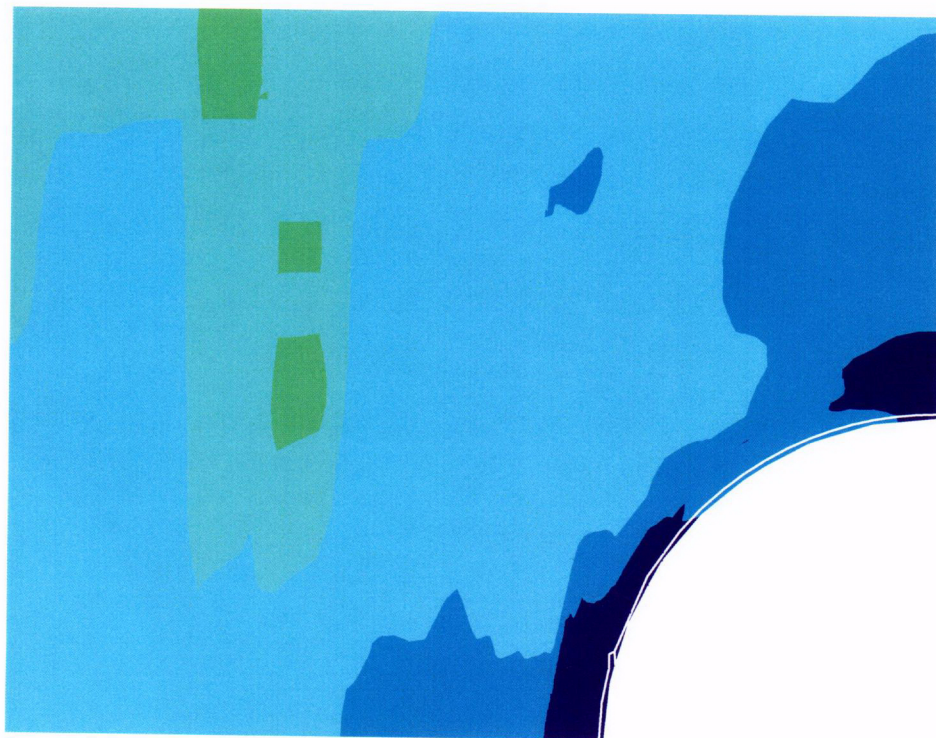
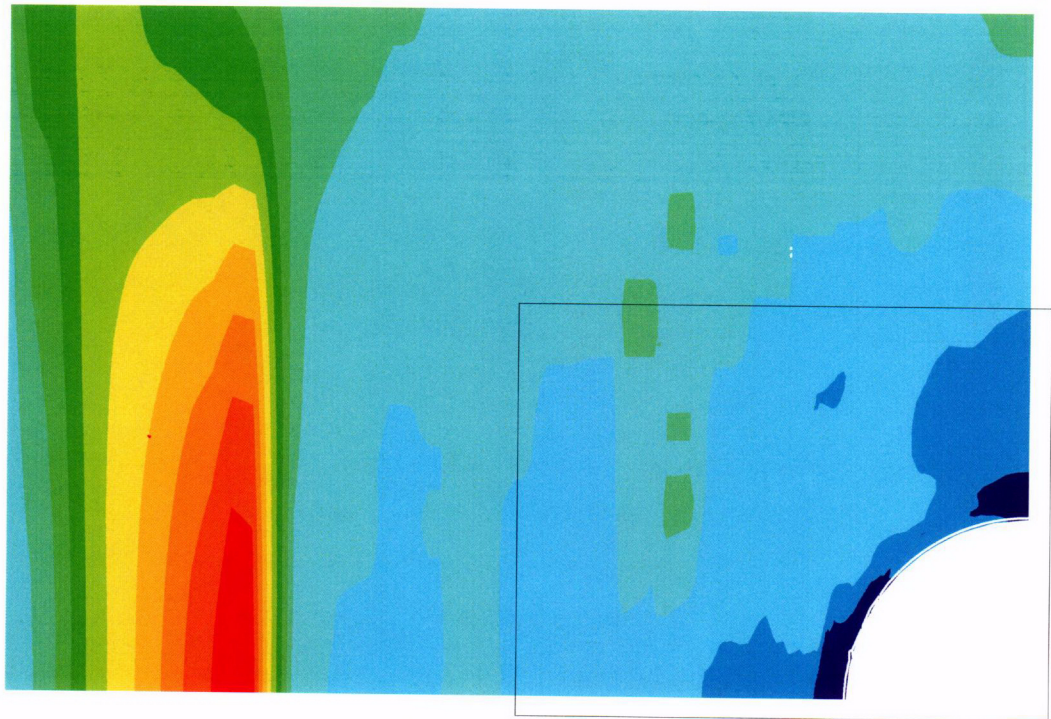
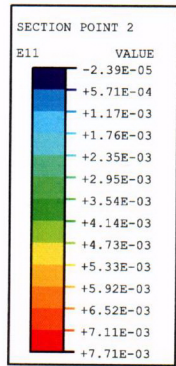


Figure 7-32. Liner Hoop Strains, Posttest Analysis Case D, at 3.0 Pd

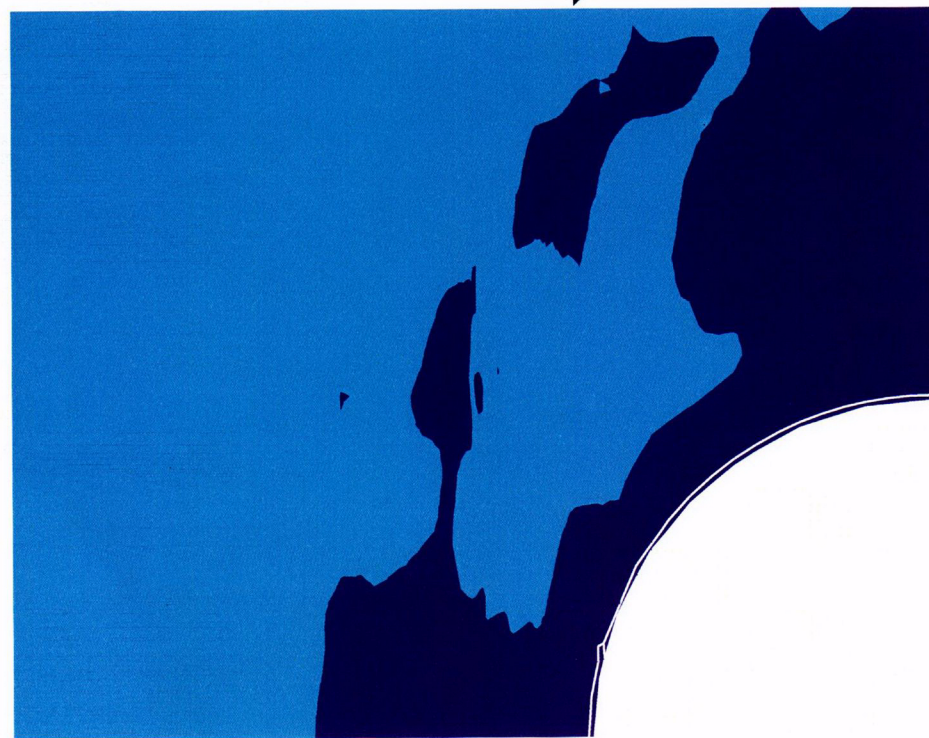
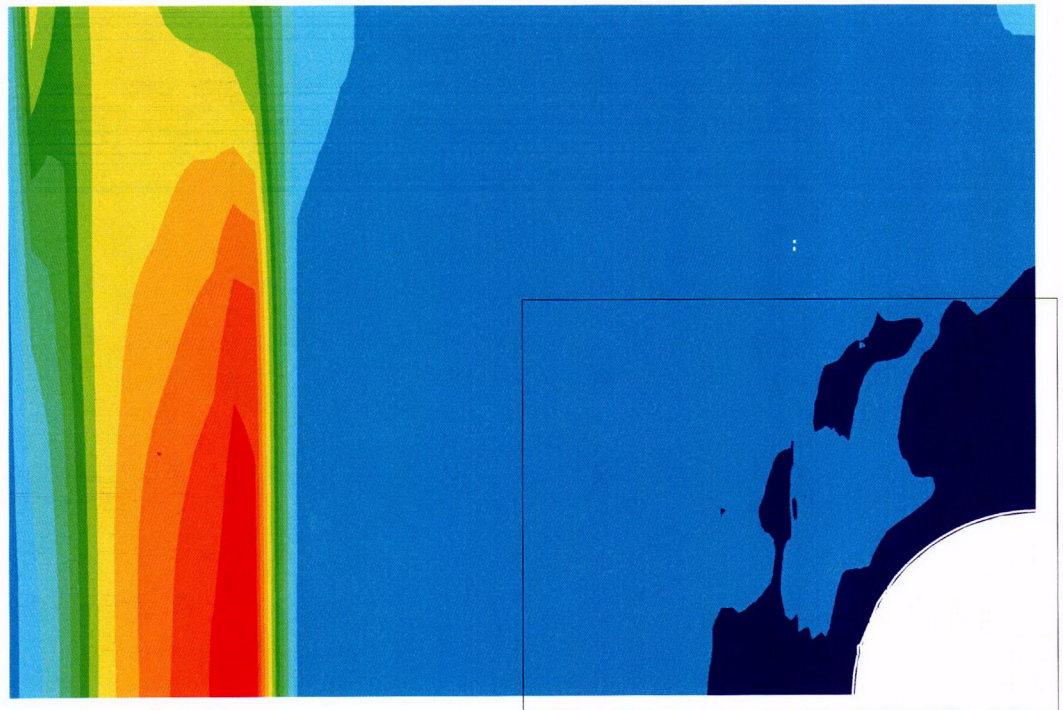
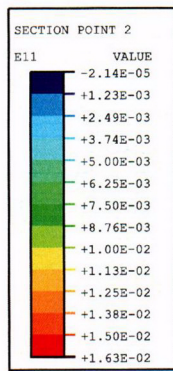
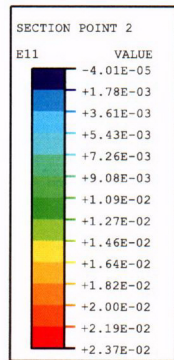
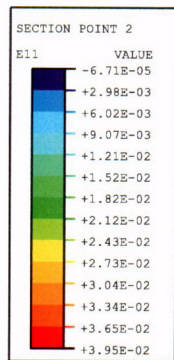
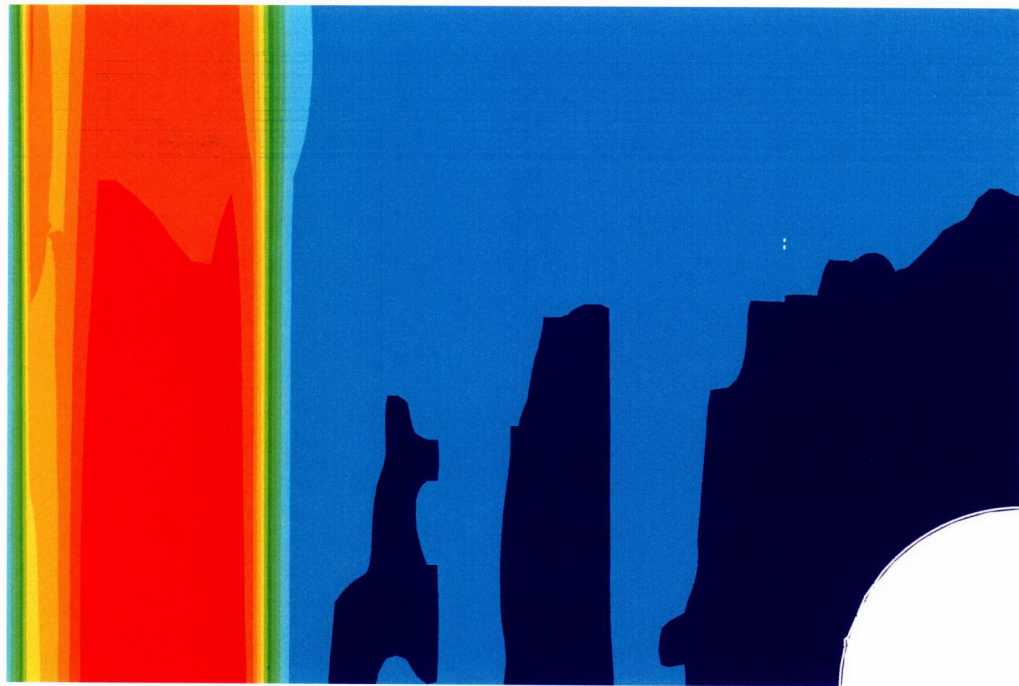


Figure 7-33. Liner Hoop Strains, Posttest Analysis Case D, at 3.2 Pd



P = 3.5 Pd



P = 3.6 Pd



Figure 7-34. Liner Hoop Strains, Posttest Analysis Case D, at 3.5 Pd and 3.6 Pd

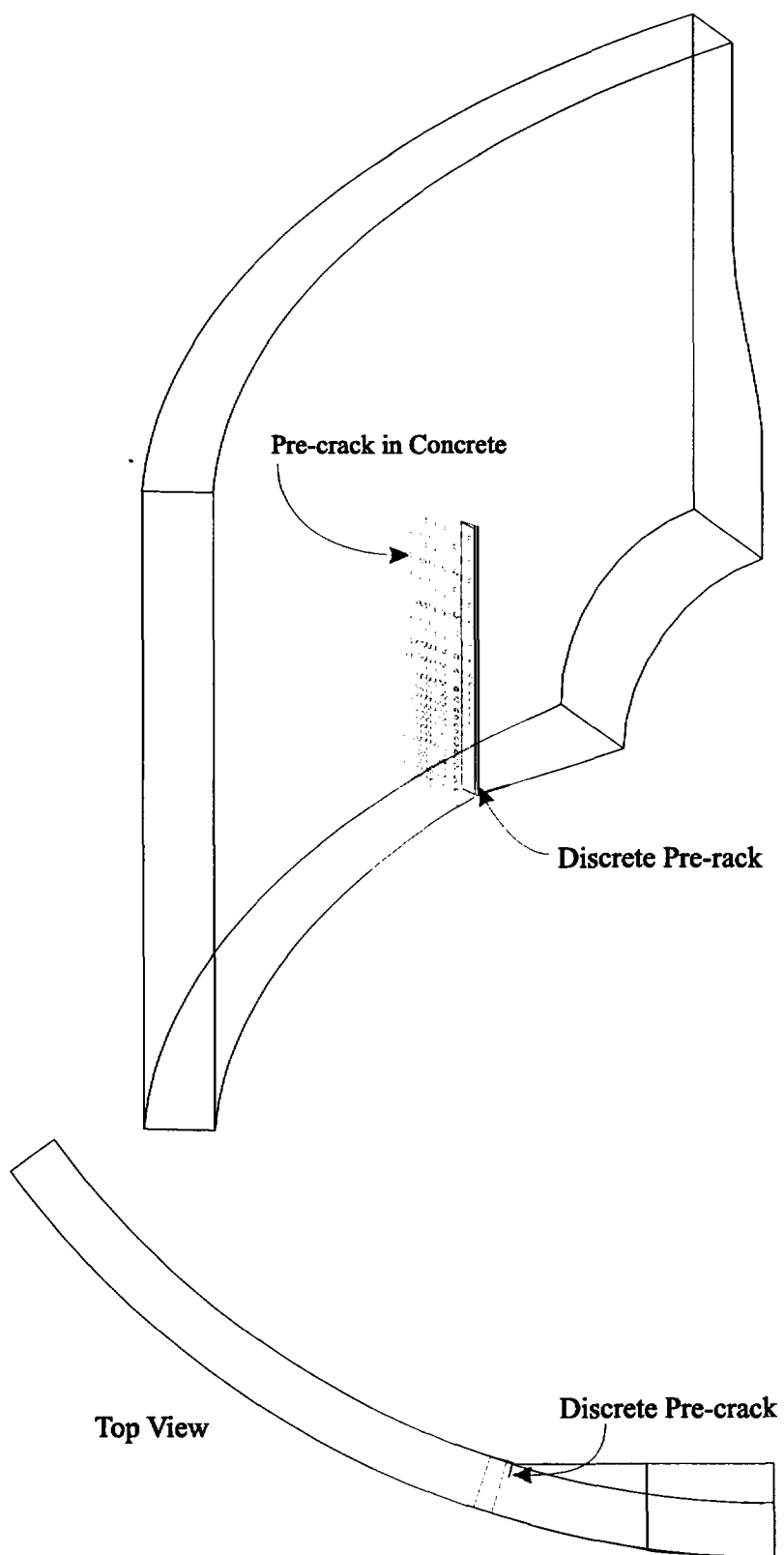


Figure 7-35. Illustration of Case E, Discrete Pre-Crack