

**MANUAL HARD COPY DISTRIBUTION
DOCUMENT TRANSMITTAL 2003-29572**

USER INFORMATION:Name: ~~GERLACH*ROSE M~~ EMPL#: 28401 CA#: 0363Address: ~~NUCSA2~~Phone#: ~~254-3194~~**TRANSMITTAL INFORMATION:**TO: ~~GERLACH*ROSE M~~ 06/24/2003

LOCATION: DOCUMENT CONTROL DESK

FROM: NUCLEAR RECORDS DOCUMENT CONTROL CENTER (NUCSA-2)

THE FOLLOWING CHANGES HAVE OCCURRED TO THE HARDCOPY OR ELECTRONIC MANUAL ASSIGNED TO YOU:

210 - 210 - NEP DUTY PLANNER: EMERGENCY PLAN-POSITION SPECIFIC PROCEDURE

REMOVE MANUAL TABLE OF CONTENTS DATE: 04/16/2003

ADD MANUAL TABLE OF CONTENTS DATE: 06/23/2003

CATEGORY: PROCEDURES TYPE: EP

ID: EP-PS-210

REPLACE: REV:15

REPLACE: REV:15

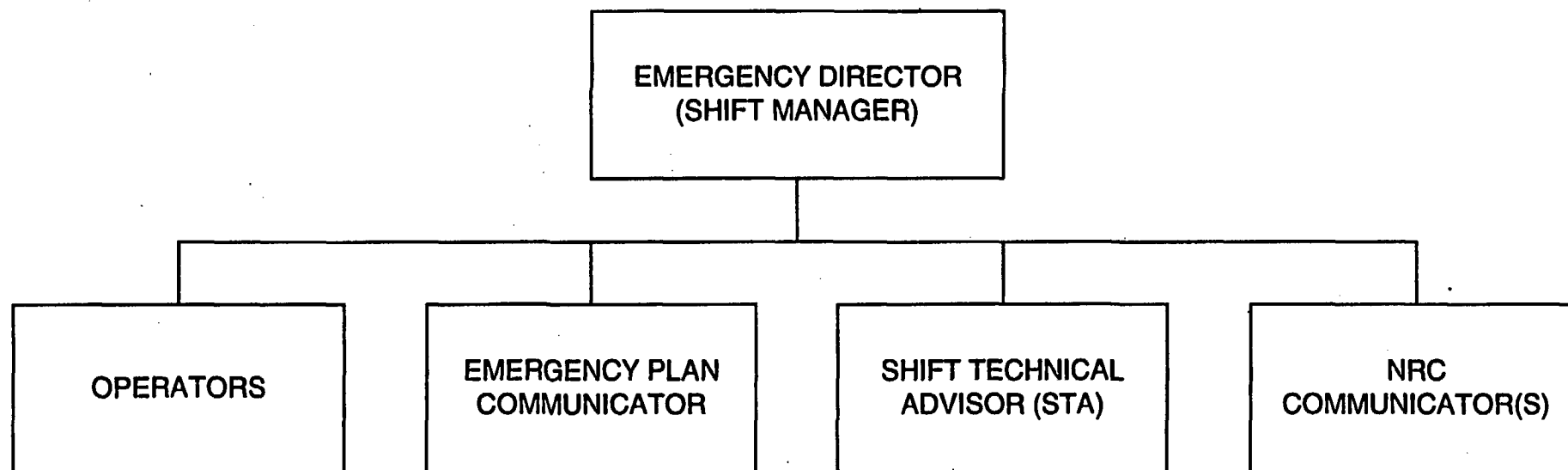
REMOVE: PCAF 2003-1102 REV: N/A

ADD: PCAF 2003-1102 REV: N/A

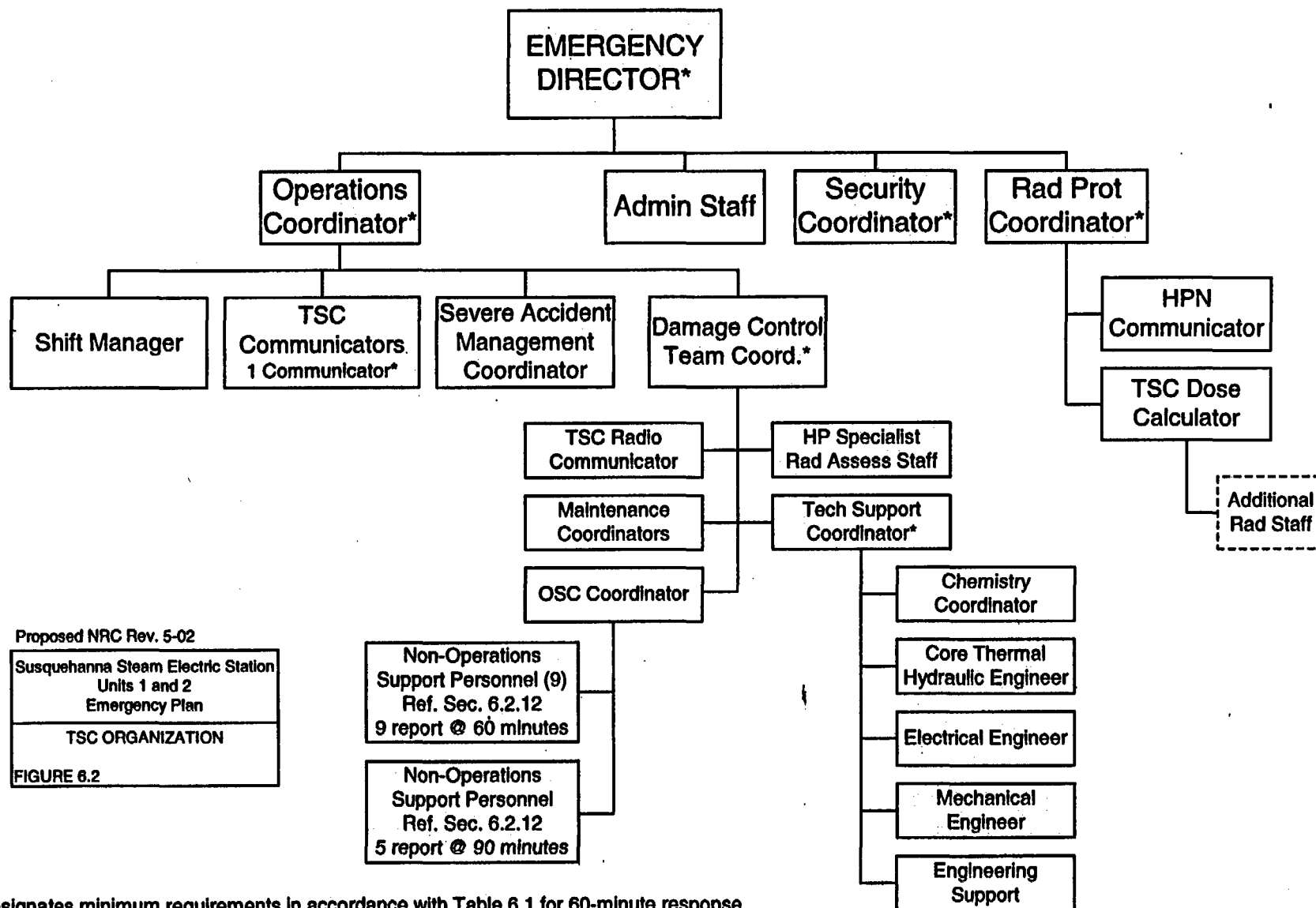
UPDATES FOR HARD COPY MANUALS WILL BE DISTRIBUTED WITHIN 5 DAYS IN ACCORDANCE WITH DEPARTMENT PROCEDURES. PLEASE MAKE ALL CHANGES AND ACKNOWLEDGE COMPLETE IN YOUR NIMS INBOX UPON RECEIPT OF HARD COPY. FOR ELECTRONIC MANUAL USERS, ELECTRONICALLY REVIEW THE APPROPRIATE DOCUMENTS AND ACKNOWLEDGE COMPLETE IN YOUR NIMS INBOX.

A045

**EMERGENCY ORGANIZATION
CONTROL ROOM**



TSC ORGANIZATION



Proposed NRC Rev. 5-02

Susquehanna Steam Electric Station
Units 1 and 2
Emergency Plan

TSC ORGANIZATION

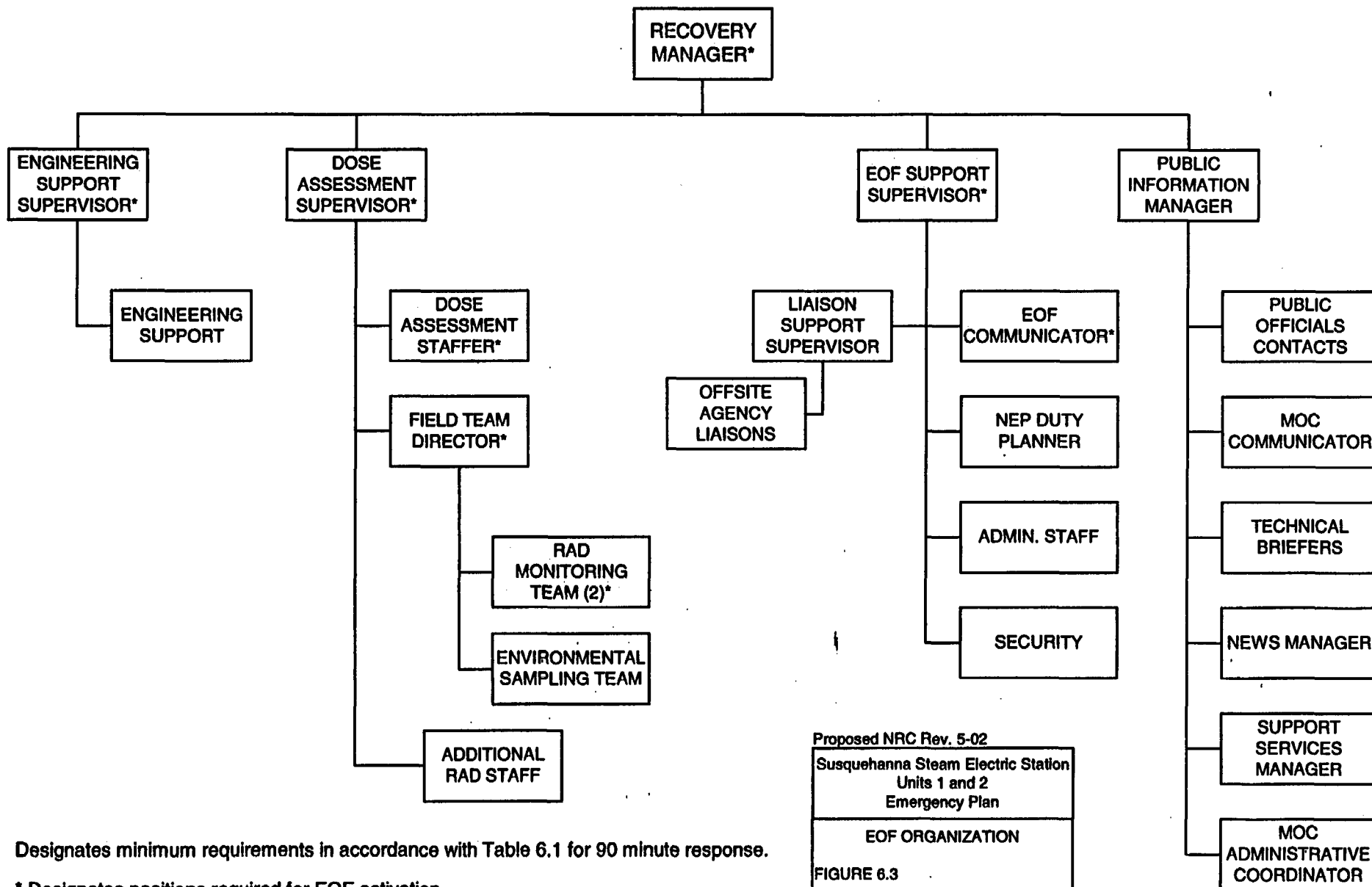
FIGURE 6.2

Designates minimum requirements in accordance with Table 6.1 for 60-minute response.

----- Individuals may be located in the OSC, TSC, or Field.

* Designates positions required for TSC activation.

EOF ORGANIZATION



Designates minimum requirements in accordance with Table 6.1 for 90 minute response.

* Designates positions required for EOF activation.

Proposed NRC Rev. 5-02
Susquehanna Steam Electric Station
Units 1 and 2
Emergency Plan
EOF ORGANIZATION
FIGURE 6.3

EMERGENCY RESPONSE DATA SYSTEM (ERDS) OPERATING INSTRUCTIONS

1.0 Initiating the ERDS Link

- 1.1 From the **PICSY FORMAT SCREEN**, type: **SEND2NRC** <ENTER>.

The **EMERGENCY RESPONSE DATA SYSTEM** screen will appear (see Attachment A).

- 1.2 Move cursor to and click on the **ACTIVATE** box under **ACTIONS**.

1.2.1 The computer will dial the NRC to establish communications.

1.2.2 When communications are established, the **EMERGENCY RESPONSE DATA SYSTEM** screen **STATUS** column will change, showing **CONNECT**, **ACCEPTING**, and **TRANSMITTING** (see Attachment A).

1.2.3 Data transmission to the NRC is transmitted once every minute. The **COMMUNICATION TASK** section of the **STATUS** column will toggle between **IDLE** and **TRANSMITTING** (see Attachment B).

2.0 Reconnecting the ERDS Link

NOTE: A noisy telephone circuit may cause the NRC link to disconnect. This is especially true during damp weather. If **PICSY** is not transmitting data, the **EMERGENCY RESPONSE DATA SYSTEM** screen **STATUS** column will display **Disconnected**, **Terminated**, **Inactive** (see Attachment C).

- 2.1 Move the cursor to and click on the **RECONNECT** box under **ACTIONS** on the **EMERGENCY RESPONSE DATA SYSTEM** screen.

2.1.1 The computer will then go through the same action steps as described in section 1.0 and reestablish communications with the NRC.

3.0 Terminating the ERDS Link

- 3.1 Move the cursor to and click on the **TERMINATE** box under **ACTIONS** on the **EMERGENCY RESPONSE DATA SYSTEM** screen (see Attachment C).

The computer will disconnect from the NRC connection.

ATTACHMENT A
ERDS DISPLAY
"CONNECT, ACCEPTED, TRANSMITTING SCREEN"

6/51/99 10:26:20
SELECT FUNCTION KEY SPD A.M.H.

EMERGENCY RESPONSE DATA SYSTEM

<u>ACTIONS</u>	<u>STATUS</u>
<div style="border: 1px solid black; padding: 5px; margin: 5px; width: 100%;">ACTIVATE</div> <div style="border: 1px solid black; padding: 5px; margin: 5px; width: 100%;">TERMINATE</div> <div style="border: 1px solid black; padding: 5px; margin: 5px; width: 100%;">RECONNECT</div>	<p>MODEM CONNECT</p> <p>ERDS COMPUTER ACCEPTED</p> <p>COMMUNICATION TASK TRANSMITTING</p> <p>PORT ASSIGNMENT: LTA0601:</p> <p>AUTO-DIAL NUMBER: 5293</p> <p>TIMEOUT INTERVAL: 5.</p> <p>RETRY COUNT: 5</p>

PREVIOUS	CANCEL	UNIT 2 REV: 06/19/99
----------	--------	-------------------------

F1=ACTIVATE F2=TERMINATE F3=RECONNECT F4= F5= F6=

PREV CANCEL TERM=TT019 CONSOLE=PRIMARY MODE=UNKNOWN ARCHV=NORMAL 45-1

ATTACHMENT B
ERDS DISPLAY
"CONNECT, ACCEPTED, IDLE SCREEN"

8/31/99 10:27:10

SELECT FUNCTION KEY

EMERGENCY RESPONSE DATA SYSTEM

<u>ACTIONS</u>		<u>STATUS</u>
ACTIVATE	MODEM	CONNECT
	ERDS COMPUTER	ACCEPTED
	COMMUNICATION TASK	IDLE
TERMINATE		
	PORT ASSIGNMENT:	LTADG01:
	AUTO-DIAL NUMBER:	3233
	TIMEOUT INTERVAL:	5
	RETRY COUNT:	5
RECONNECT		

PREVIOUS CANCEL UNIT 2
REV: 03/13/95

F1=ACTIVATE F2=TERMINATE F3=RECONNECT F4= F5= F6=
REV CANS TERM=TT019CONSOLE=PRIMARY MODE=UNKNOWN ARCHV=NORMAL

45-1

ATTACHMENT C
ERDS DISPLAY SCREEN

6/21/99 10:22:40

SELECT FUNCTION KEY
SPD
AMP

EMERGENCY RESPONSE DATA SYSTEM

ACTIONS

ACTIVATE

TERMINATE

RECONNECT

STATUS

MODEM	Disconnected
ERDS COMPUTER	Terminated
COMMUNICATION TASK	Inactive

PORT ASSIGNMENT:-	LTA0C01:
AUTO-DIAL NUMBER:-	3293
TIMEOUT INTERVAL:-	5
RETRY COUNT:-	5

PREVIOUS

CANCEL

F1=ACTIVATE F2=TERMINATE F3=RECONNECT F4= F5= F6=
REV CANG TERM=TT015CONSOLE=PRIMARY MODE=UNKNOWN ARCHV=NORMAL :