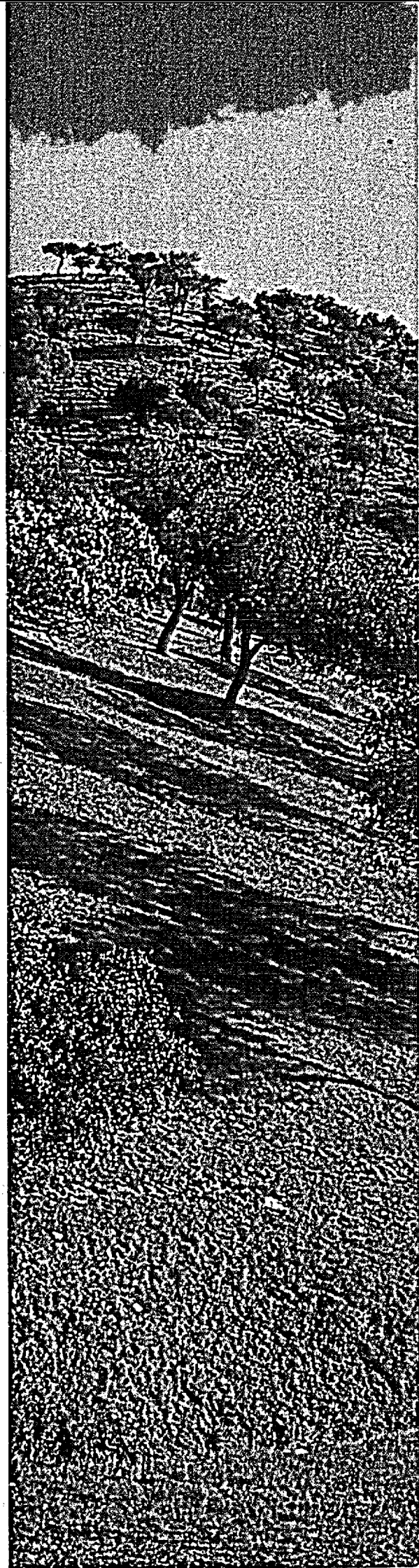


5

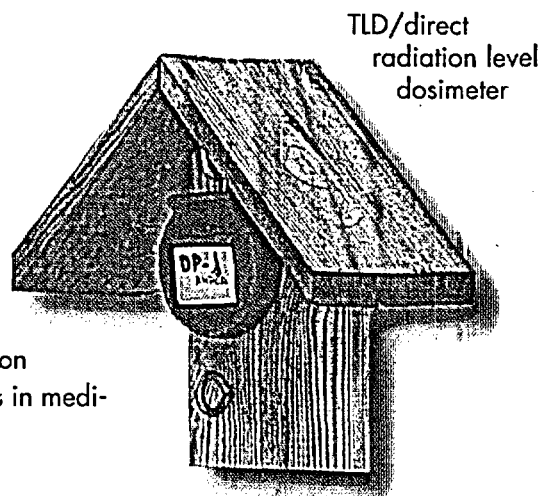
ENVIRONMENTAL MANAGEMENT SYSTEM AT EL CABRIL DISPOSAL FACILITY

enresa



Environmental Policy at El Cabril disposal facility

enresa was set up with the specific mission of carrying out efficient management of the radioactive wastes produced in electricity generation and in the application of radioisotopes in medicine, industry and research.

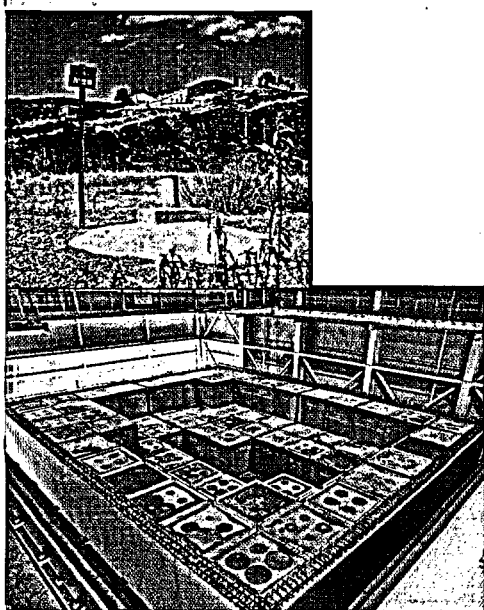


This mission implies performance of the activities required to immobilize and isolate radioactive wastes for the necessary period and under conditions such that there not be any undue risk for people or the environment, now or in the future. Consequently, the activity entrusted to **enresa** is inherently oriented towards protecting the environment.

Achieving this objective implies placing a series of barriers between the wastes and the environment, such that the radionuclides contained therein cannot come into contact with mankind. In the case of low and intermediate level wastes, this task is carried out at El Cabril Disposal Facility.

The operation of El Cabril Disposal Facility gives rise to a series of environmental issues other than those intrinsic to radioactive wastes, and involved in all industrial activities, such as atmospheric emissions, liquid discharges, the generation of industrial and urban wastes, etc., and **enresa** has taken the decision to integrate these conventional issues within the existing system, constituting an overall environmental management system.

This Environmental Policy, which covers all the activities carried out at El Cabril Disposal Facility, is based on the following Principles:



Left: Environmental Radiological Surveillance station
Below: Waste containers inside a storage cell



Visitors
Centre

Systematization and control of processes

All the processes will be procedurized such that a systematic approach may be adopted for the control and minimization of environmental impact, through preventive control.

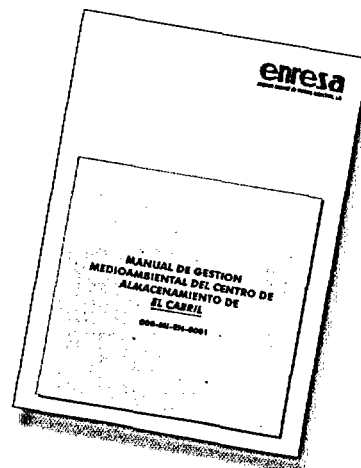
Off-site information

Transparency in information is the basis for credibility, as a result of which providing periodic, clear information on the results of the activities performed is to be the guarantee for achievement of this objective. Furthermore, understanding of the activities carried out at El Cabril is essential as regards achieving public acceptance of the task performed, as a result of which providing information will be an on-going process within the activities to be performed at the facility.

On-going improvement

The **enresa** quality policy is based on two fundamental issues, on the one hand prevention through a quality system applied to the activity performed, and on the other the on-going improvement of processes, based on quality management by all the members of the staff. This dual basis of prevention and on-going improvement will be developed at the Facility through the establishment and revision of objectives of an environmental nature.

Andrés Guerra-Librero
Director of El Cabril Disposal Facility



El Cabril Disposal Facility Environmental Management System has been certified by AENOR under Standard UNE-EN ISO-14001, this representing recognition of the measures taken and objectives established at the Facility for improvement of its environmental performance.

All industrial processes imply the production of various types and volumes of emissions and wastes which need to be controlled in order to reduce or avoid their impact on the environment. A specific example is provided by the radioactive wastes generated by nuclear power plants and by those arising as a result of the dismantling of facilities.

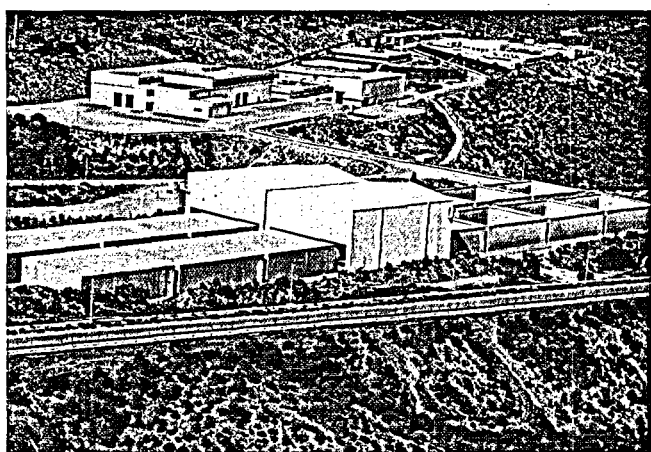
The company Empresa Nacional de Residuos Radiactivos, S.A., (ENRESA), was set up in 1984 on a decision by the Spanish Parliament with the basic objective of ensuring safe management of the radioactive wastes generated in Spain, in the interests of people and the environment.

Since then, our company has been carrying out activities relating to the collection, control, transport, conditioning and disposal of such wastes with complete guarantees, endorsed by the competent national and international organizations involved in nuclear safety, such as the Spanish Nuclear Safety Council and the International Atomic Energy Agency, providing industry and society in general with state-of-the-art technical solutions for the optimization of the safe and controlled management of this type of wastes.

Performance of this multiple activity by Enresa, with its obvious identity as a public service, obliges us to double our efforts to guarantee the correct management of the wastes which are placed in our charge, in a way compatible with protection of the environment, providing our facilities and activities with measures for maximum safety and control of any impact on the environment.

In this respect, the management of El Cabril Low and Intermediate Level Waste Disposal Facility (province of Córdoba) has wanted to go further than simply complying with the requirements of environmental legislation, and has implemented an Environmental Management System certifiable at international level, as a guarantee of correct environmental management at the facility. It is the intention of the Board to extend this criterion to the company's other installations.

Enresa's aim, with the Environmental Management System presented herein, is to demonstrate its firm intention to make the greatest possible efforts to contribute to protecting the environment. In this respect it requests the collaboration of all its personnel in achieving these objectives, and encourages companies in general, and those belonging to the industry in particular, to follow this path such that, between all those involved, the sustainable development increasingly demanded by society may be achieved.

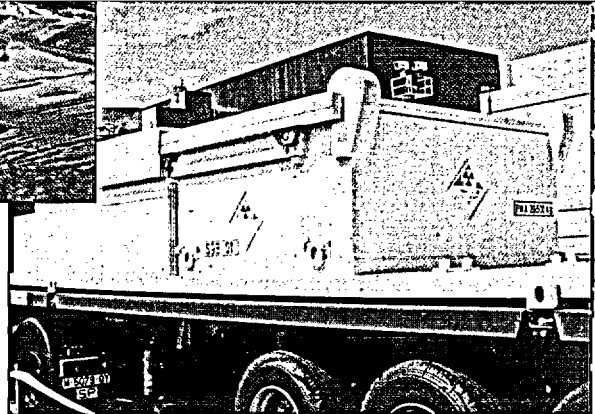


El Cabril:
Disposal structures

Antonio Colino
Chairman



Above: Pond for
the collection of
rainwater
Right: Transport
Units



Legislation

El Cabil Disposal Facility will continue to meet all the applicable legislation and standards, both those specific to its main activity, as those relating to nuclear installations, and the rest of the environmental legislation applicable to the activities performed at the Facility at State, Autonomous Community, and Local level. Furthermore, wherever possible, the company will go beyond mere strict compliance with the legal requirements, proposing objectives aimed at continuous improvement of environmental issues.

Care for the surroundings

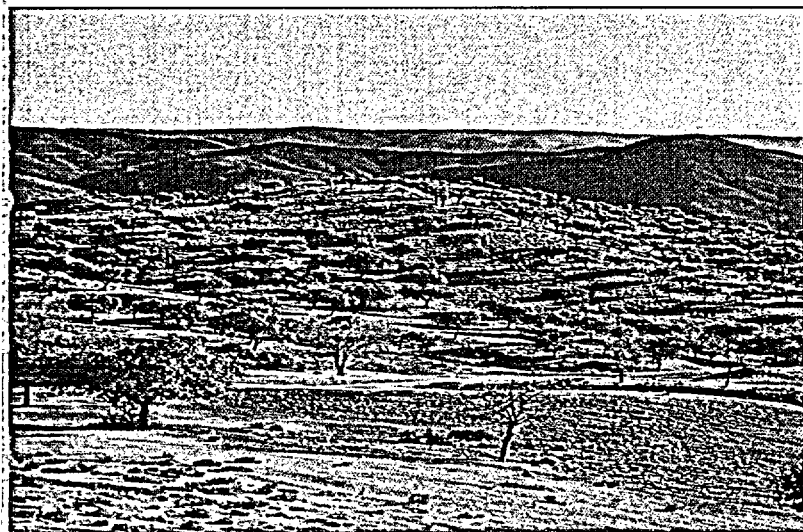
Care for the surroundings, with collaboration in maintenance of the flora and fauna of the site on which El Cabil is located, is a constant among the activities performed. The Facility wishes to continue with the task performed to date, as regards selective care for the flora and fauna, such that the environmental conditions of the area are maintained.

Minimization of waste generation

The quantity and volume of the wastes produced at the facility itself will be reduced to the extent possible. Likewise, recycling will be carried out whenever the types of wastes make this possible.

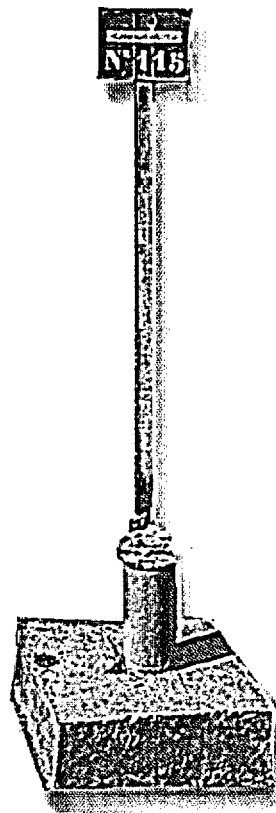
Optimization of water resources

The geographical location of El Cabil Disposal Facility makes it necessary to be especially careful with water resources, as a result of which management of the water resources of the facility will be optimized to the extent possible.



El Cabil:
Evergreen oak
woodland

Boreholes in the
groundwater
Surveillance
Network



enresa

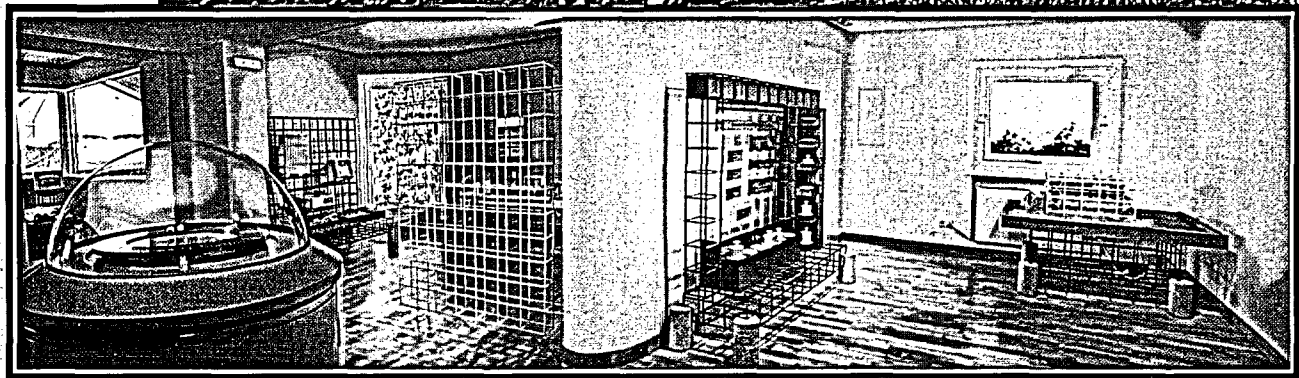
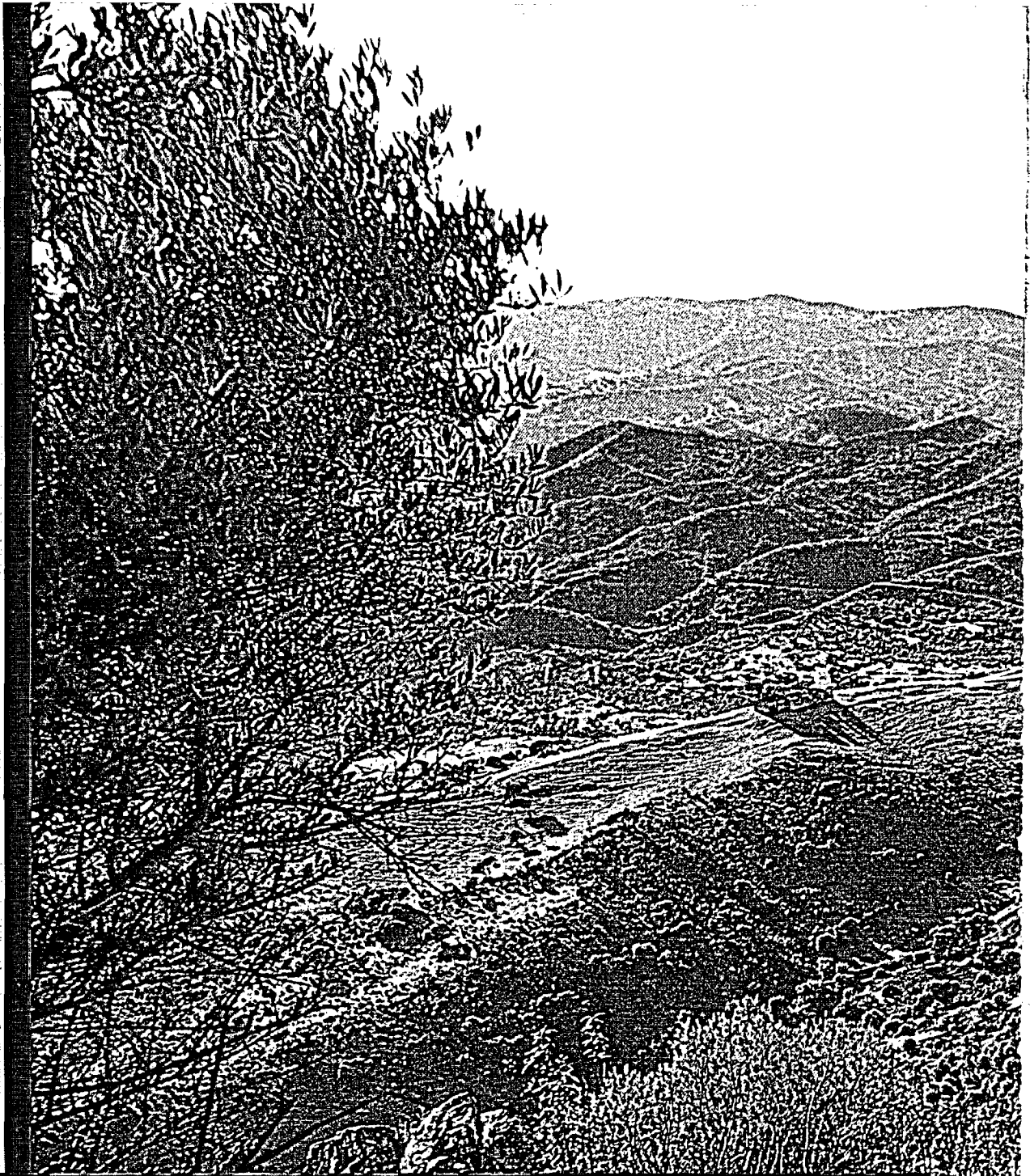
Empresa Nacional de Residuos Radiactivos, S.A.

Emilio Vargas, 7 • Tel.: 34 (91) 566 81 00.
Fax: 34 (91) 566 81 69 • 28043 MADRID

Apartado de Correos, 2 • Tel.: 34 (957) 57 51 00
Fax: 34 (957) 57 51 30
14200 PEÑARROYA - PUEBLONUEVO -
(CÓRDOBA)

c/Castillo, 5 • Tel.: 34 (957) 64 01 68 •
14740 HORNACHUELOS - (CÓRDOBA)

<http://www.enresa.es>

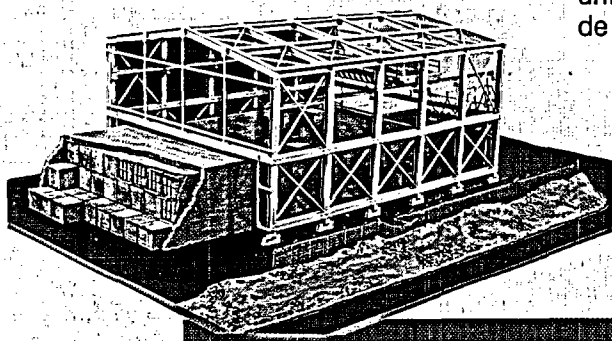
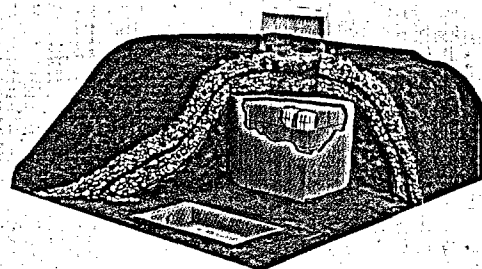


EL CABRIL VISITORS CENTRE

Disposal of Radioactive Wastes

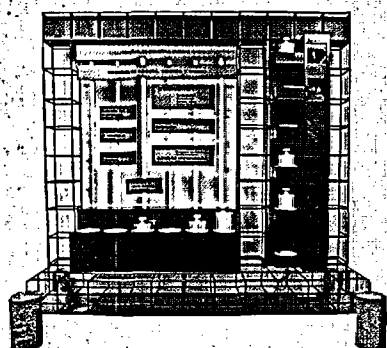
The low and intermediate level radioactive waste disposal system used at El Cabril consists of placing a series of natural and engineered barriers between the wastes and the environment, the aim being to keep the wastes isolated for the time required for their radioactivity to decay to harmless levels.

The disposal capacity provided in this way is sufficient for the storage of all the low and intermediate level wastes to be generated in Spain until the first decade of next century.

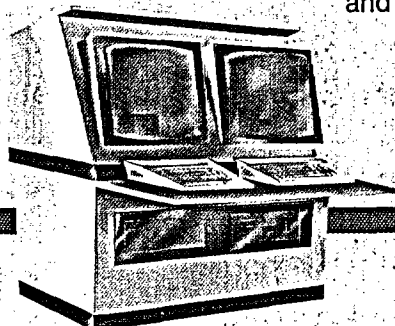
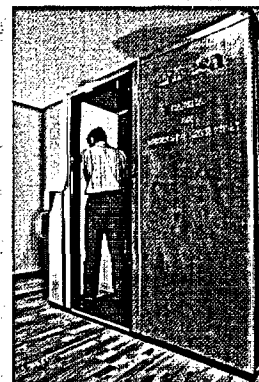


Safety and Control

The El Cabril disposal centre has been designed in such a way as to avoid any radiological impact on the environment. In this respect, an Environmental Radiological Surveillance Programme is performed, the aim being to check that the measured values do not exceed the natural background levels.



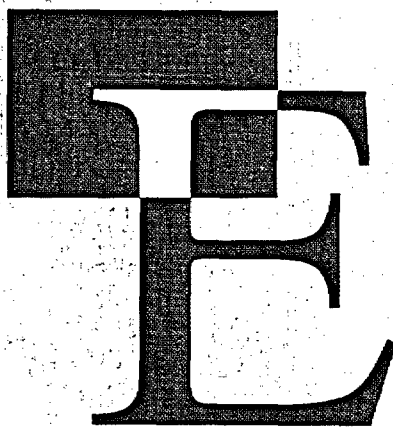
The results of these surveillance programmes are periodically sent to the Nuclear Safety Council, the Ministry of Industry and Energy and other regional and local organizations.





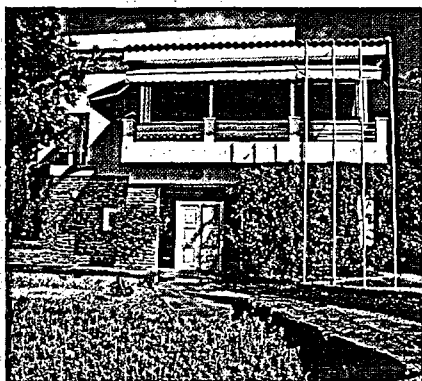
Enresa, the national radioactive waste management company, was created for the isolation and control of radioactive wastes in Spain.

Enresa is a public company whose shareholders are the Centre for Energy, Environmental and Technological Research (CIEMAT) and the National Institute for Industry (INI). In legislative and regulatory matters, Enresa reports to the Ministry of Industry and Energy, while its tasks are supervised by the Nuclear Safety Council, the country's maximum authority for nuclear safety and radiological protection issues.



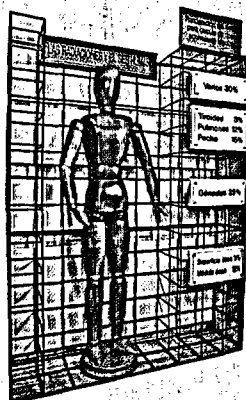
L CABRIL **information centre**

This centre was created with the objective of providing information on the activities carried out by Enresa and of spreading knowledge of the tasks involved in managing low and intermediate level radioactive wastes in Spain and neighbouring countries.



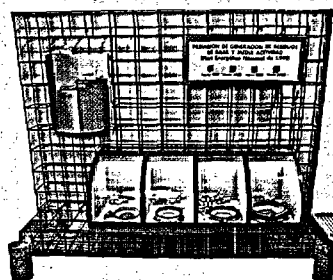
The way in which the information is presented is designed to be accessible to the widest possible audience. The contents, exhibited by way of a combination of models, audiovisual systems and computer equipment, are aimed at eliciting participation by the visitors and allowing them to get a clear idea of the problems posed by radioactive wastes and the solutions currently applied.

Radioactivity and Wastes

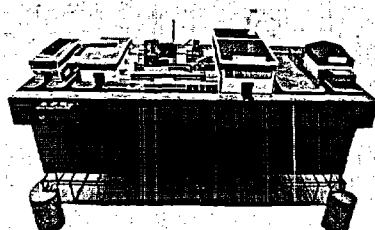


From 1886, the year in which the French scientist Henri Becquerel discovered the phenomenon of artificial radioactivity, to the present day, the techniques relating to the use of this phenomenon have undergone spectacular development.

The progressive application of ionizing radiations in industry, medicine and research has led both to the generation of radioactive wastes and to the need for strategies designed for their management and correct disposal.

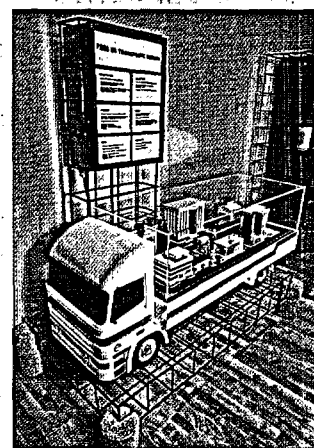


Operations prior to Disposal

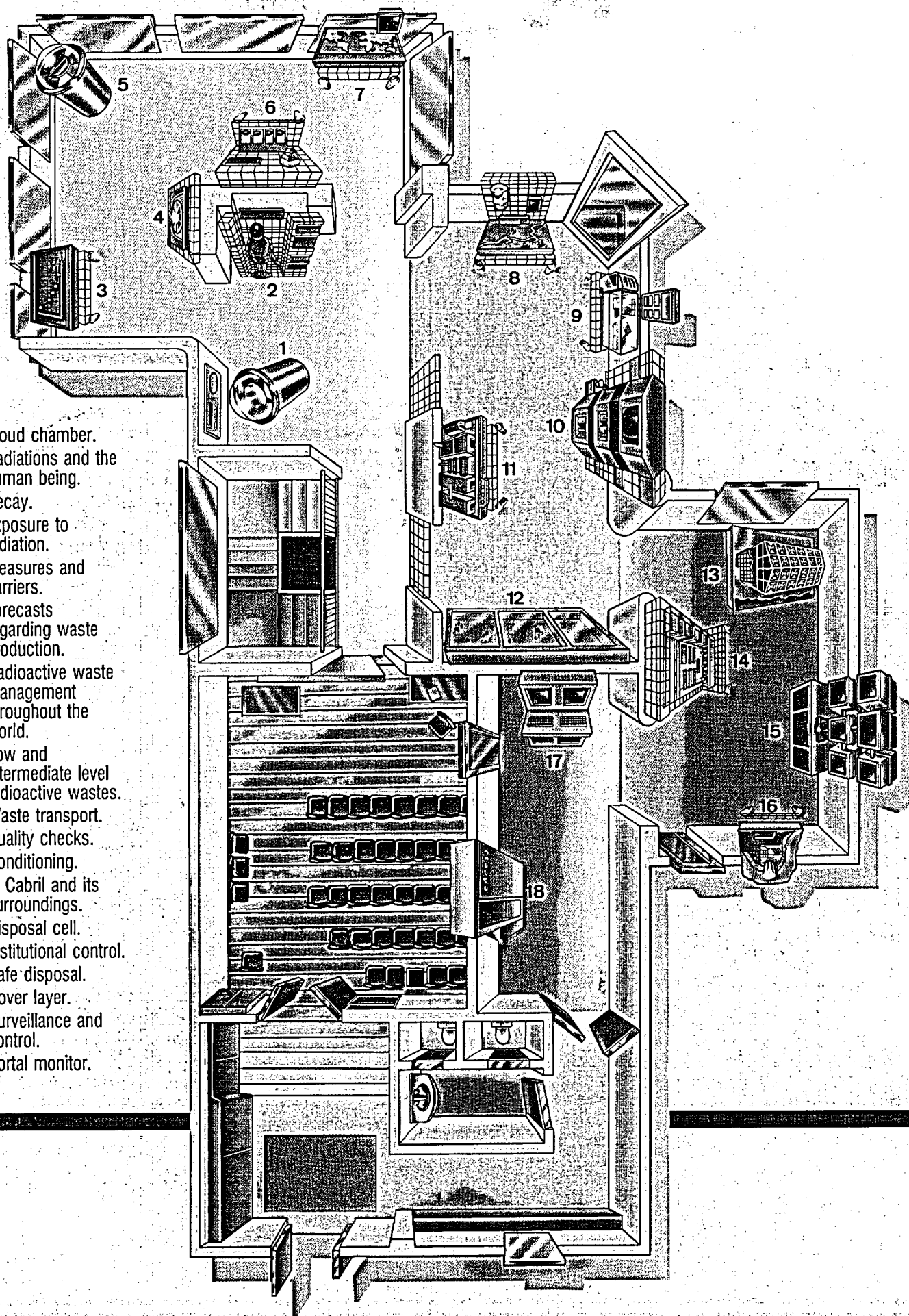


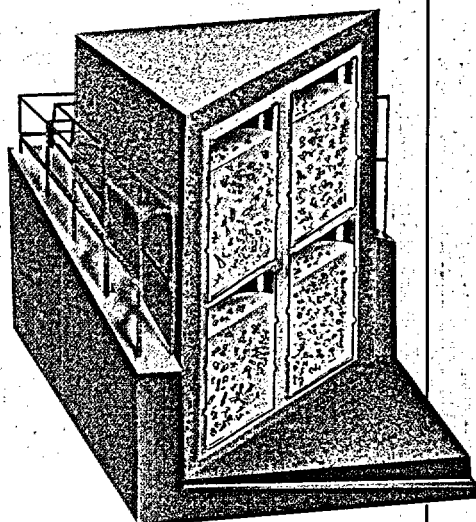
Transfer of wastes to the El Cabril disposal centre is accomplished in accordance with the limits established by the Regulations governing the Transport of Hazardous Materials.

On arrival at the centre, the documentation identifying the origin of the wastes is checked and the wastes themselves are subjected to quality controls, consisting of tests designed to verify their characteristics. Subsequently, and prior to disposal, the wastes undergo a conditioning process.



- 1.—Cloud chamber.
- 2.—Radiations and the human being.
- 3.—Decay.
- 4.—Exposure to radiation.
- 5.—Measures and barriers.
- 6.—Forecasts regarding waste production.
- 7.—Radioactive waste management throughout the world.
- 8.—Low and intermediate level radioactive wastes.
- 9.—Waste transport.
- 10.—Quality checks.
- 11.—Conditioning.
- 12.—El Cabril and its surroundings.
- 13.—Disposal cell.
- 14.—Institutional control.
- 15.—Safe disposal.
- 16.—Cover layer.
- 17.—Surveillance and control.
- 18.—Portal monitor.





El Cabil is used for the disposal of the low and intermediate level radioactive wastes generated in Spain.

The facility is located on a 1,126 Ha site in the foothills of the Sierra Albarrana, in the Sierra Morena chain, within the municipal territory of the town of Hornachuelos (Córdoba).

**EL CABRIL
INFORMATION CENTRE**

enresa

Postal Box 39
Peñarroya-Pueblonuevo
CORDOBA