

ANO-2 Bare Metal Visual Relaxation Request

Entergy Operations, Inc.

Date – June 17, 2003

Introduction

Bill James

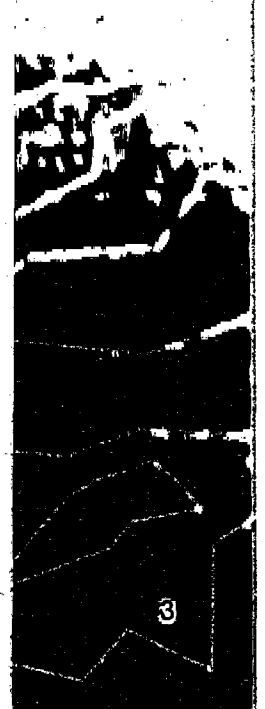
6/17/2003

B. Jensen

Purpose of Meeting

- ▶ BMV Hardship
- ▶ RVH Inspection Plans
- ▶ Diverse and Complementary Inspections
- ▶ Relaxation Requests
- ▶ Answer Questions

6/17/2003



Agenda

Introduction

Bill James

Hardship Review

Doug Edgell

Inspection Plans

William Sims

Other Relaxation Requests

William Sims

Closing Remarks

Craig Anderson

6/17/2003

plnt

Feb 11, 2003 Order Requirements for BMV

- ▶ IV.C (1) plants in the High category, RPV head inspections shall perform:
 - 1) (a) Bare metal visual examination of 100% of the RPV head surface (including 360° around each RPV head penetration nozzle), AND
 - (b) Either:
 - (i) Ultrasonic testing of each RPV head penetration nozzle and an assessment to determine if leakage has occurred into the interference fit zone,
 - OR
 - (ii) Eddy current testing or dye penetrant testing of the wetted surface of each J-Groove weld and RPV head penetration nozzle base material.

Feb 11, 2003 Order

- ▶ A request for relaxation shall address:
 - (1) The proposed alternative(s) for inspection of specific nozzles will provide an acceptable level of quality and safety, or
 - (2) Compliance with this Order for specific nozzles would result in hardship or unusual difficulty without a compensating increase in the level of quality and safety.

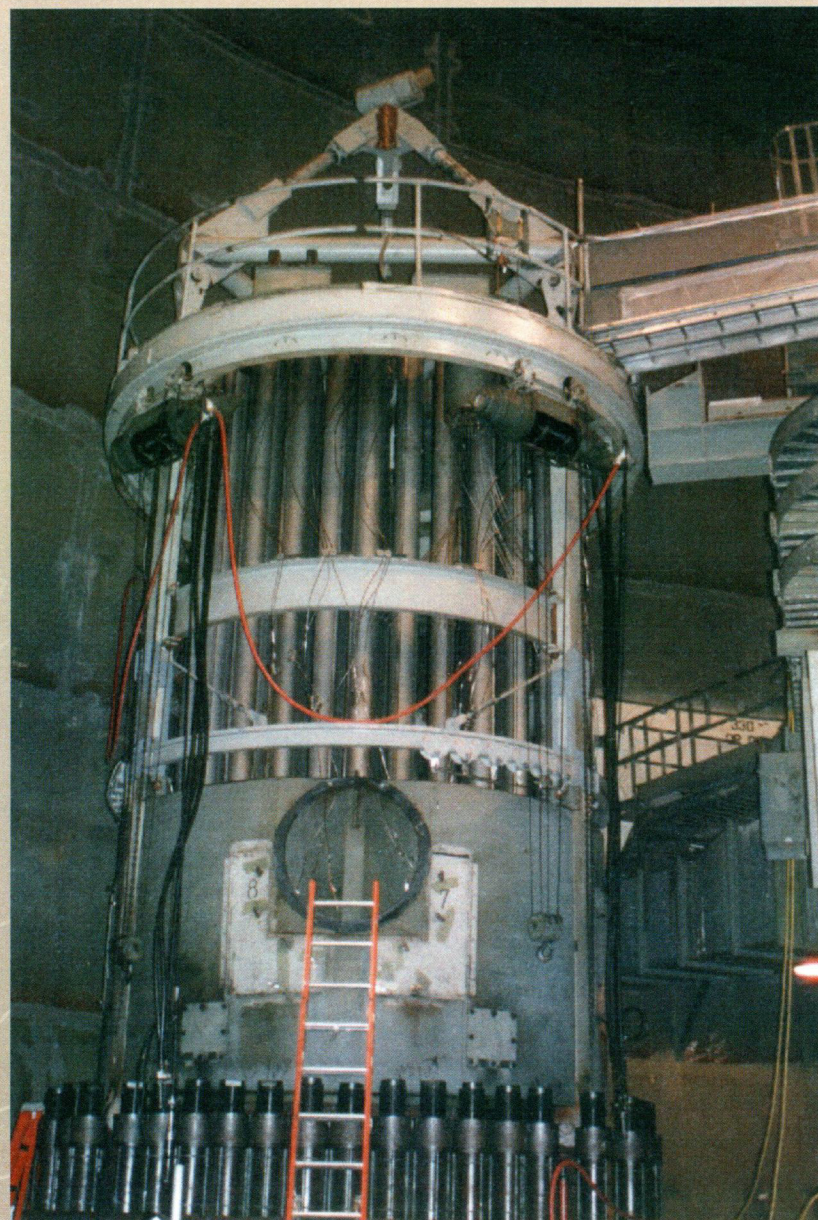
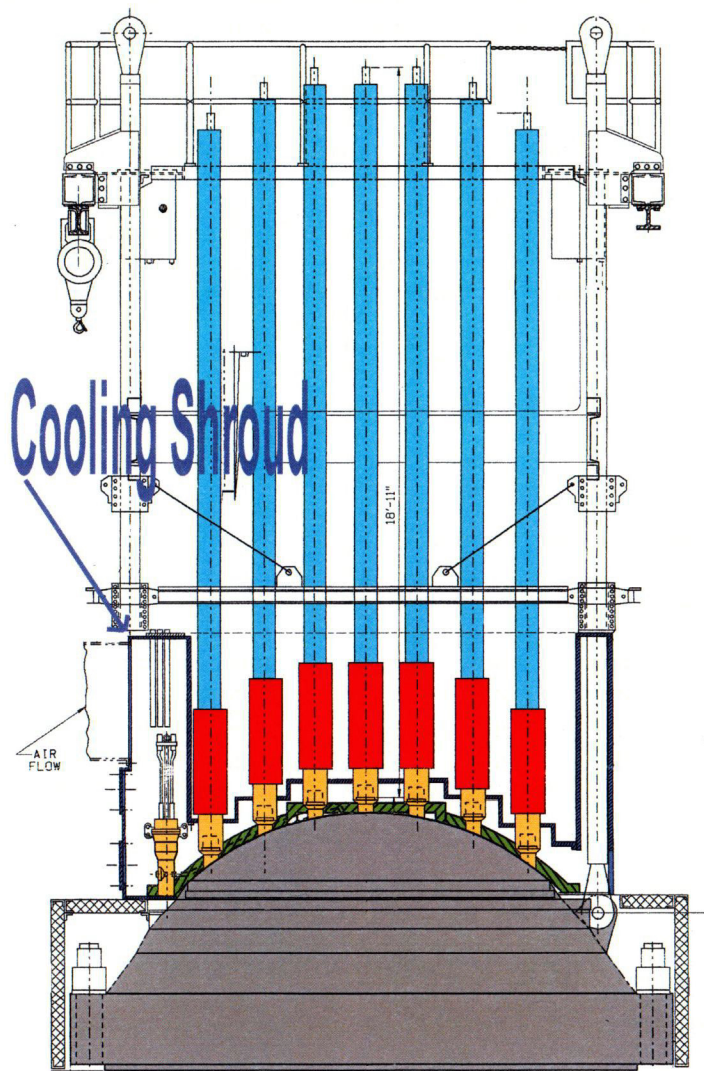
Entergy Relaxation for ANO-2

APPROACH: Two-fold

1. Hardship in Performing BMV
2. Complementary inspections that ensure quality and safety

ANO-2 Relaxation Request

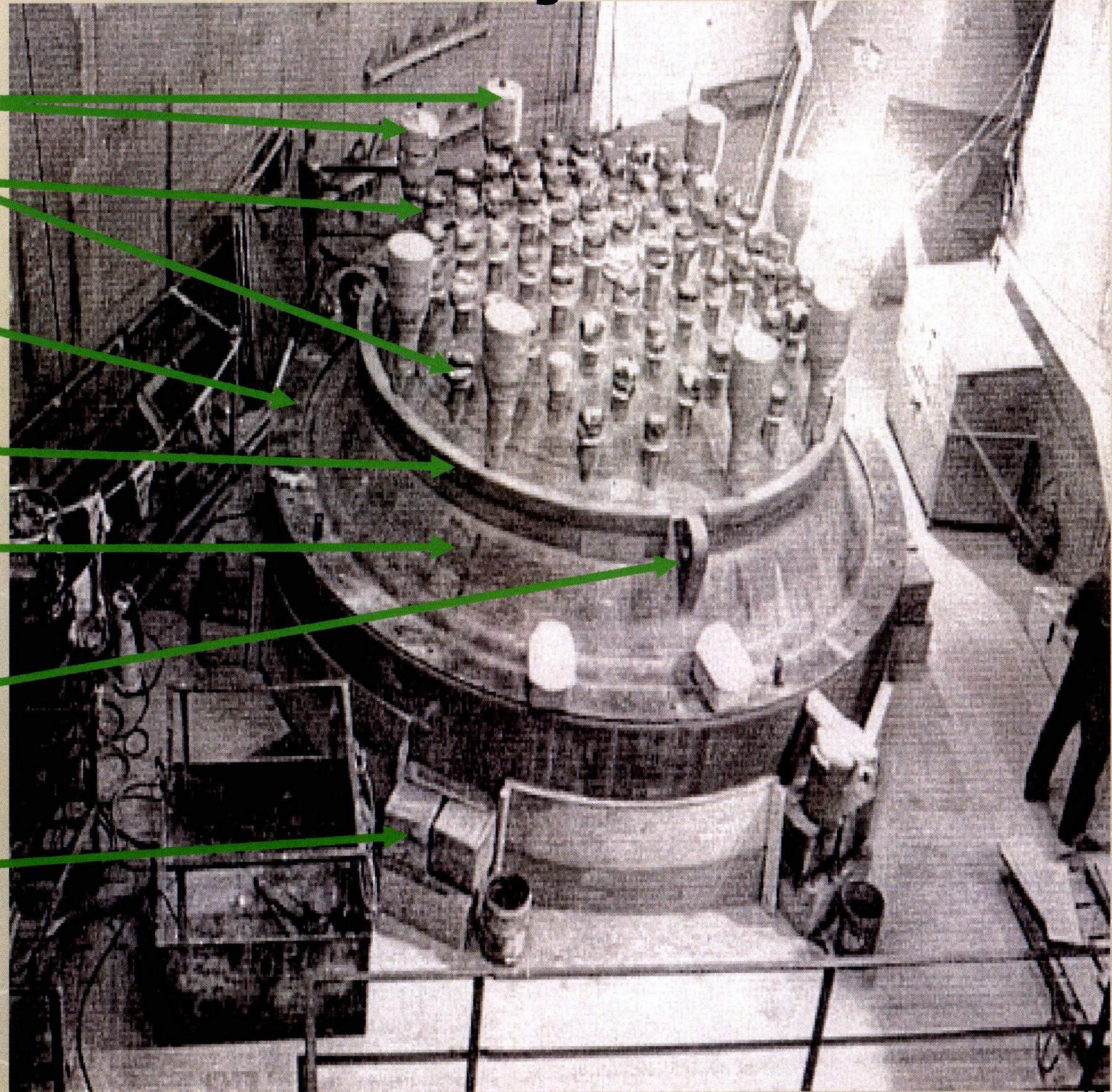
- ▶ May 8th Submittal: Believed to provide for both BMV hardship as well as a diverse and complementary approach to BMV
- ▶ Retrospect: Additional technology can provide supplemental level of diversity



Reactor Vessel Head Design

ANO-2 Head During Plant Construction

- ▶ ICI Nozzles (8)
- ▶ CEDM Nozzles (81)
- ▶ RVH Flange
- ▶ Insulation Retainer Ring
- ▶ Accessible Area for BMV
- ▶ Lifting Trunion
- ▶ Head Stand



6/17/2003

10

Reactor Vessel Head Fabrication

ANO-2 Head During Plant Construction

- ▶ **CEDM Motor Housings**
- ▶ **Motor housing and insulation collars were installed from the center out due to the restricted access**
- ▶ **CEDM Nozzles**
- ▶ **ICI Nozzles**

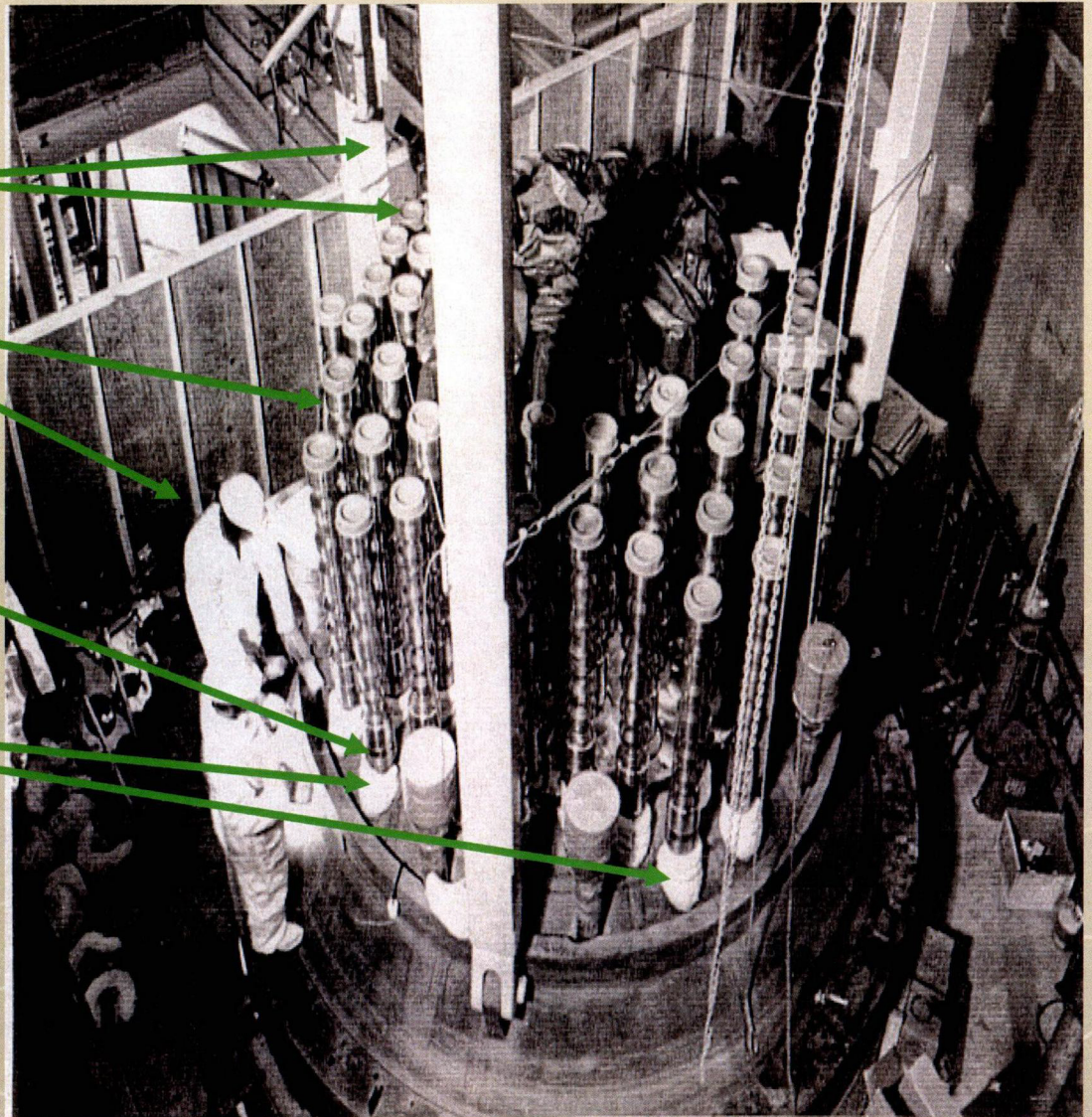
Note: Nozzle to CEDM connection follow head contour



6/17/2003

Reactor Vessel Head Fabrication

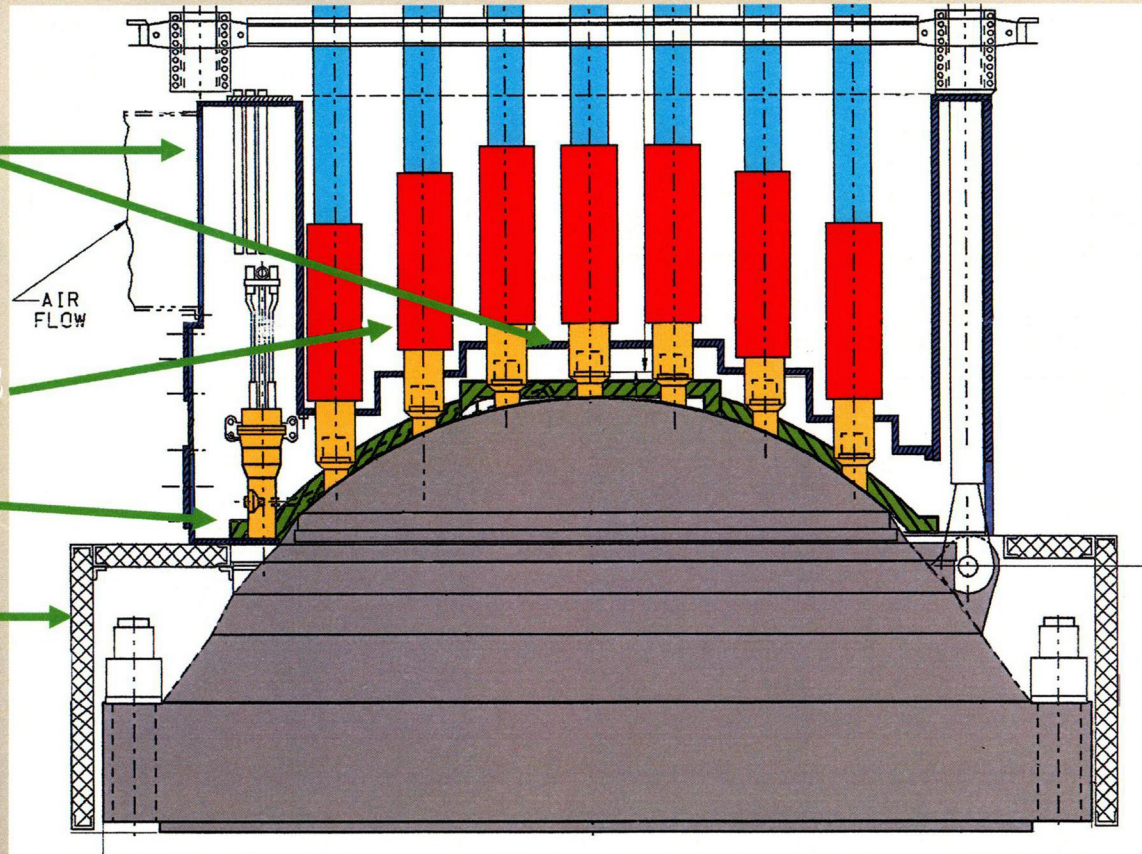
- ▶ **Lift Rig Columns**
- ▶ **CEDM Motor Housings**
- ▶ **ICI Nozzles**
- ▶ **CEDM Insulation Collars**



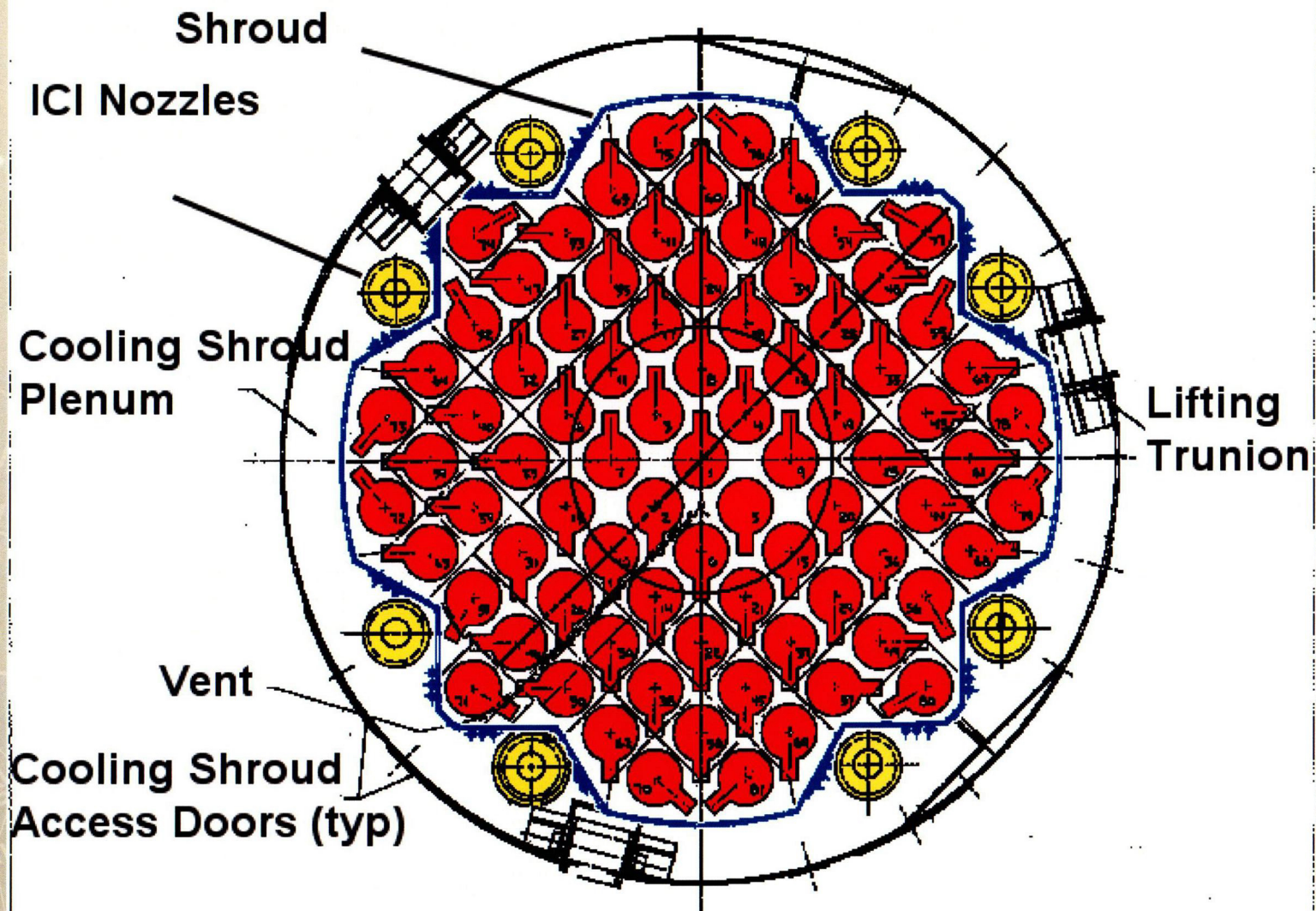
6/17/2003

RVH Cooling Shroud and Insulation

- ▶ **Cooling Shroud**
- ▶ **ICI Access Doors**
- ▶ **CEDM Coil Stacks**
- ▶ **Panel Insulation**
- ▶ **Removable Insulation**



RVH Cooling Shroud and ICI BMV



6/17/2003

14

C06

Panel Insulation

- ▶ Collars are enclosed by prefabricated Stainless Steel reflective insulation panels
- ▶ Panels are sized to closely fit around the collars
- ▶ 56" diameter dome panel and 16 panels around the radius

