



**Pacific Gas and  
Electric Company**

**James R. Becker**  
Vice President - Diablo Canyon  
Operations and Station Director

Diablo Canyon Power Plant  
P.O. Box 56  
Avila Beach, CA 93424

805.545.3462  
Fax: 805.545.4234

June 13, 2003

PG&E Letter DCL-03-068

U.S. Nuclear Regulatory Commission  
ATTN: Document Control Desk  
Washington, DC 20555-0001

Docket No. 50-275, OL-DPR-80  
Docket No. 50-323, OL-DPR-82  
Diablo Canyon Units 1 and 2  
Monthly Operating Report for May 2003

Dear Commissioners and Staff:

Attached is the Monthly Operating Report for Diablo Canyon Power Plant, Units 1 and 2, for May 2003. This report is submitted in accordance with Technical Specification 5.6.4 and NRC Generic Letter 97-02. Also enclosed is a summary of the annual surveillance of the breakwaters, which is submitted in accordance with Equipment Control Guideline 17.3, "Flood Protection."

Sincerely,

James R. Becker

SMG/1713/R0246817

Enclosures

cc/enc: Paul R. Fox, American Nuclear Insurers  
Robert D. Glynn, Jr.  
Thomas P. Gwynn, NRC Regional Administrator, Region IV  
David L. Proulx, NRC Senior Resident Inspector  
Gregory M. Rueger  
David H. Jaffe, NRC Project Manager  
INPO Record Center

IE24

**MAY 2003, OPERATION SUMMARIES  
DIABLO CANYON POWER PLANT  
UNITS 1 AND 2**

Summary of Unit 1 Operation

Unit 1 remained in Mode 1 (Power Operation), at approximately 100 percent power during May 2003. There were no significant operational activities.

Summary of Unit 2 Operation

Unit 2 remained in Mode 1, at approximately 100 percent power during May 2003. There were no significant operational activities.

Actuations of Pressurizer Safety or Power Operated Relief Valves

There were no challenges to the pressurizer power operated relief valves, pressurizer safety valves, or steam generator safety valves.

Report of Breakwater Survey Inspection Required by Diablo Canyon Power Plant  
Equipment Control Guideline 17.3

The breakwaters were inspected during the months of November 2002 through April 2003 in accordance with Equipment Control Guideline 17.3, "Flood Protection." In May, PG&E completed Surveillance Test Procedure M-90B, "Annual Surveillance of Diablo Canyon Breakwaters," which measured the locations of eight survey control points and compared the measurements to previous surveys.

<u>Coordinate</u>	Maximum difference in feet from:	
	<u>Baseline</u> (point)	<u>Last Year</u> (point)
Easting	-0.18 (W-5A)	-0.04 (W-6A)
Northing	0.06 (W-3A)	0.11 (several)
Elevation	-0.25 (W-3A)	0.03 (W-5A)

Compared to the baseline survey in 1984, the maximum difference in the position of a breakwater survey control point was -0.25 feet in elevation. The maximum difference since the spring 2002 survey was 0.11 feet Northing. The differences are considered negligible and indicate no appreciable breakwater displacement or settling. The breakwaters performed as designed and remain in good condition. Several breakwater photographs taken in April are provided in Enclosure 3.

### OPERATING DATA REPORT

DOCKET NO.: 50-275  
UNIT NAME: Diablo Canyon Unit 1  
DATE: 06/01/2003  
COMPLETED BY: L. M. Parker  
TELEPHONE: (805) 545-3386

REPORT MONTH: May 2003

1.	Design Electrical Rating (MWe - Net):	1,103
2.	Maximum Dependable Capacity (Mwe - Net):	1,087

		This Month	YTD	Cumulative
3.	Number of Hours Reactor Critical:	744.0	3,623.0	137,849.8
4.	Number of Hours Generator On-Line:	744.0	3,623.0	136,332.6
5.	Unit Reserve Shutdown Hours:	0.0	0.0	0.0
6.	Net Electrical Energy Generated (MWH):	826,097	4,009,267	141,215,566

### UNIT SHUTDOWNS

DOCKET NO.: 50-275  
UNIT NAME: Diablo Canyon Unit 1  
DATE: 06/01/2003  
COMPLETED BY: L. M. Parker  
TELEPHONE: (805) 545-3386

REPORT MONTH: May 2003

NO.	DATE (YYMMDD)	TYPE F (Forced) S (Scheduled)	DURATION (HOURS)	REASON <sup>1</sup>	METHOD OF SHUTTING DOWN <sup>2</sup>	CAUSE & CORRECTIVE ACTIONS COMMENTS
N/A						There were no shutdowns this month.

1. Reason

A-Equipment Failure (Explain)  
B-Maintenance or Test  
C-Refueling  
D-Regulatory Restriction  
E-Operator Training/License Examination  
F- Administrative  
G-Operational Error (Explain)  
H-Other (Explain)

2. Method

1-Manual  
2-Manual Trip/Scram  
3-Automatic Trip/Scram  
4-Continuation from Previous Month  
5-Other

### OPERATING DATA REPORT

DOCKET NO.: 50-323  
UNIT NAME: Diablo Canyon Unit 2  
DATE: 06/01/2003  
COMPLETED BY: L. M. Parker  
TELEPHONE: (805) 545-3386

REPORT MONTH: May 2003

1.	Design Electrical Rating (MWe - Net):	1119
2.	Maximum Dependable Capacity (MWe - Net):	1087

		This Month	YTD'	Cumulative
3.	Number of Hours Reactor Critical:	744.0	2,154.4	133,512.9
4.	Number of Hours Generator On-Line:	744.0	2,089.2	131,977.1
5.	Unit Reserve Shutdown Hours:	0.0	0.0	0.0
6.	Net Electrical Energy Generated (MWH):	818,688	2,114,514	138,806,504

### UNIT SHUTDOWNS

DOCKET NO.: 50-323  
UNIT NAME: Diablo Canyon Unit 2  
DATE: 06/01/2003  
COMPLETED BY: L. M. Parker  
TELEPHONE: (805) 545-3386

REPORT MONTH: May 2003

NO.	DATE (YYMMDD)	TYPE F (Forced) S (Scheduled)	DURATION (HOURS)	REASON <sup>1</sup>	METHOD OF SHUTTING DOWN <sup>2</sup>	CAUSE & CORRECTIVE ACTIONS COMMENTS
N/A						There were no shutdowns this month.

**1. Reason**

A-Equipment Failure (Explain)  
B-Maintenance or Test  
C-Refueling  
D-Regulatory Restriction  
E-Operator Training/License Examination  
F- Administrative  
G-Operational Error (Explain)  
H-Other (Explain)

**2. Method**

1-Manual  
2-Manual Trip/Scram  
3-Automatic Trip/Scram  
4-Continuation from Previous Month  
5-Other

Breakwater Photos (Spring 2003)

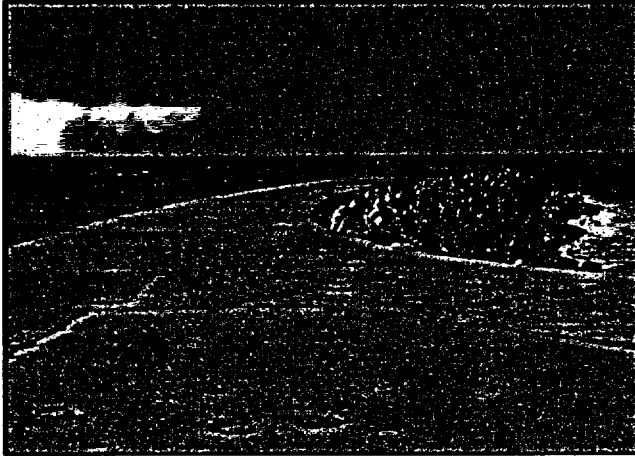


Photo 1: Overview of West Breakwater from Shoreline (4/2003).



Photo 2: Overview of West Breakwater from End of Cap (4/2003).



Photo 3: Overview of East Breakwater from Shoreline (4/2003).

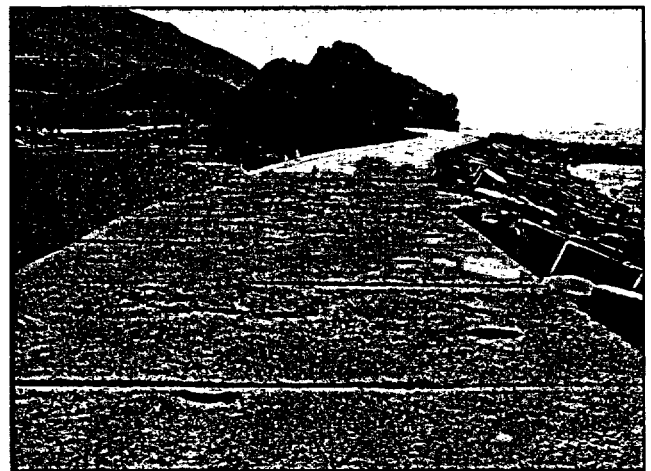


Photo 4: Overview of East Breakwater from End of Cap (4/2003).