



UNITED STATES
NUCLEAR REGULATORY COMMISSION
REGION IV
611 RYAN PLAZA DRIVE, SUITE 400
ARLINGTON, TEXAS 76011-4005

April 28, 2003

William A. Eaton, Vice President
Operations - Grand Gulf Nuclear Station
Entergy Operations, Inc.
P.O. Box 756
Port Gibson, Mississippi 39150

SUBJECT: SUMMARY OF ANNUAL PERFORMANCE ASSESSMENT MEETING FOR
GRAND GULF NUCLEAR STATION

Dear Mr. Eaton:

This refers to the meeting conducted in Port Gibson, Mississippi, on April 17, 2003. This meeting was to discuss the safety performance at Grand Gulf Nuclear Station from January 1, 2002, to December 31, 2002.

Topics discussed during the meeting included a description of the Reactor Oversight Process, the safety performance at the Grand Gulf Nuclear Station, and other topics that may have been of interest to the local area residents. Members of the public present at the meeting were allowed to ask questions and comment on the proceedings.

In accordance with Section 2.790 of the NRC's "Rules of Practice," Part 2, Title 10, Code of Federal Regulations, a copy of this letter will be placed in the NRC's Public Document Room.

Should you have any questions concerning this matter, we will be pleased to discuss them with you.

Sincerely,

William D. Johnson, Chief
Project Branch A
Division of Reactor Projects

Docket: 50-416
License: NPF-29

Enclosures:

1. Attendance List
2. Presentation Slides

Entergy Operations, Inc.

-2-

cc:

Executive Vice President
and Chief Operating Officer
Entergy Operations, Inc.
P.O. Box 31995
Jackson, Mississippi 39286-1995

Wise, Carter, Child & Caraway
P.O. Box 651
Jackson, Mississippi 39205

Winston & Strawn
1400 L Street, N.W. - 12th Floor
Washington, DC 20005-3502

Jay Barkley, Chief
Energy & Transportation Branch
Environmental Compliance and
Enforcement Division
Mississippi Department of
Environmental Quality
P.O. Box 10385
Jackson, Mississippi 39289-0385

President, District 1
Claiborne County Board of Supervisors
P.O. Box 339
Port Gibson, Mississippi 39150

General Manager
Grand Gulf Nuclear Station
Entergy Operations, Inc.
P.O. Box 756
Port Gibson, Mississippi 39150

The Honorable Richard Ieyoub
Attorney General
Department of Justice
State of Louisiana
P.O. Box 94005
Baton Rouge, Louisiana 70804-9005

Office of the Governor
State of Mississippi
Jackson, Mississippi 39201

Entergy Operations, Inc.

-3-

Mike Moore, Attorney General
Frank Spencer, Asst. Attorney General
State of Mississippi
P.O. Box 22947
Jackson, Mississippi 39225

Dr. Brian W. Amy
State Health Officer
State Board of Health
P.O. Box 1700
Jackson, Mississippi 39215

Robert W. Goff, Program Director
Division of Radiological Health
Mississippi Dept. of Health
P.O. Box 1700
Jackson, Mississippi 39215-1700

Vice President
Operations Support
Entergy Operations, Inc.
P.O. Box 31995
Jackson, Mississippi 39286-1995

Director, Nuclear Safety
and Regulatory Affairs
Entergy Operations, Inc.
P.O. Box 756
Port Gibson, Mississippi 39150

Charlie Norrell
Supervisor, District 2
Claiborne County
1045 Magnolia Lane
Port Gibson, Mississippi 39150

Charles Shorts, Vice President
Supervisor, District 5
Claiborne County
4007 Pine Grove Road
Port Gibson, Mississippi 39150

Martha Lott, District 4
Claiborne County Board
of Supervisors
P.O. Box 279
Port Gibson, Mississippi 39150

Entergy Operations, Inc.

-4-

Diane Davaul
Claiborne County Interim Tax
Assessor/Collector
P.O. Box 469
Port Gibson, Mississippi 39150

Amelda Arnold, Mayor
Town of Port Gibson
P.O. Box 607
Port Gibson, Mississippi 39150

Robert R. Latham, Jr., Director
Mississippi Emergency
Management Agency
P.O. Box 4501, Fondren Station
Jackson, Mississippi 39296-4501

Edward Brown, Mayor
City of St. Joseph
P.O. Box 217
St. Joseph, Louisiana 71366

Alex Davis, Mayor
City of Newellton
P.O. Box 477
Newellton, Louisiana 71357

Rick Foster, Director
Tensas Office of Emergency Preparedness
P.O. Box 768
St. Joseph, Louisiana 71366

Mike Henry
State Liaison Officer
Department of Environmental Quality
P.O. Box 82135
Baton Rouge, Louisiana 70884-2135

Federal Emergency Management
Agency, Region IV
ATTN: Kenneth O. Burris, Jr.
Regional Director
3003 Chamblee Tucker Road
Atlanta, Georgia 30341

Entergy Operations, Inc.

-5-

Col. Michael Brown
Assistant Director
Military Department
Office of Emergency Preparedness
P.O. Box 44217
Baton Rouge, Louisiana 70804

Federal Emergency Management
Agency, Region VI
ATTN: Ron Castleman, Regional Director
800 North Loop 288
Denton, Texas 76201-3698

Albert Butler, President
Supervisor, District 1
Claiborne County
P.O. Box 614
Port Gibson, Mississippi 39150

William Moore
Supervisor, District 3
P.O. Box 645
Port Gibson, Mississippi 39150

Electronic distribution by RIV:
 Regional Administrator **(EWM)**
 DRP Director **(ATH)**
 DRS Director **(DDC)**
 Senior Resident Inspector **(TLH4)**
 Branch Chief, DRP/A **(WDJ)**
 Senior Project Engineer, DRP/A **(CJP)**
 Staff Chief, DRP/TSS **(PHH)**
 RITS Coordinator **(NBH)**

ADAMS: G ☒ **Yes** G No Initials: __CJP____
 G ☒ **Publicly Available** G Non-Publicly Available G Sensitive G ☒ **Non-Sensitive**

R:_GG\2003\GG4-17-03 EOC MS.wpd

RIV:SPE:DRP/A	C:DRP/A			
CJPaulk;df	WDJohnson			
/RA/	/RA/			
4/23/03	4/28/03			

OFFICIAL RECORD COPY

T=Telephone

E=E-mail

F=Fax

ENCLOSURE 1
ATTENDANCE LIST

NRC Representatives

R. Deese, Resident Inspector
T. Hoeg, Senior Resident Inspector
W. Johnson, Chief, Reactor Project Branch A
M. Spivey, Site Office Assistant

Entergy Operations, Inc. Representatives

D. Bottemiller
S. Cameron
B. Eaton
J. Edwards
F. Guynn
J. Ross
G. Williams

Members of the Public

A. Arnold
B. Brown
A. Butler
E. Crisler
D. Duval
B. Kember
C. Short
M. White
B. Young

ANNUAL ASSESSMENT MEETING



Nuclear Regulatory Commission

Region IV

NRC Meeting Purpose

- **Meeting with Licensee and Public**
- **Inform Public of Plant Performance**



NRC Meeting Guidelines

- **Registration Table**
- **Questions and Answers**
- **Feedback Forms**
- **Handouts**



NRC PERFORMANCE GOALS

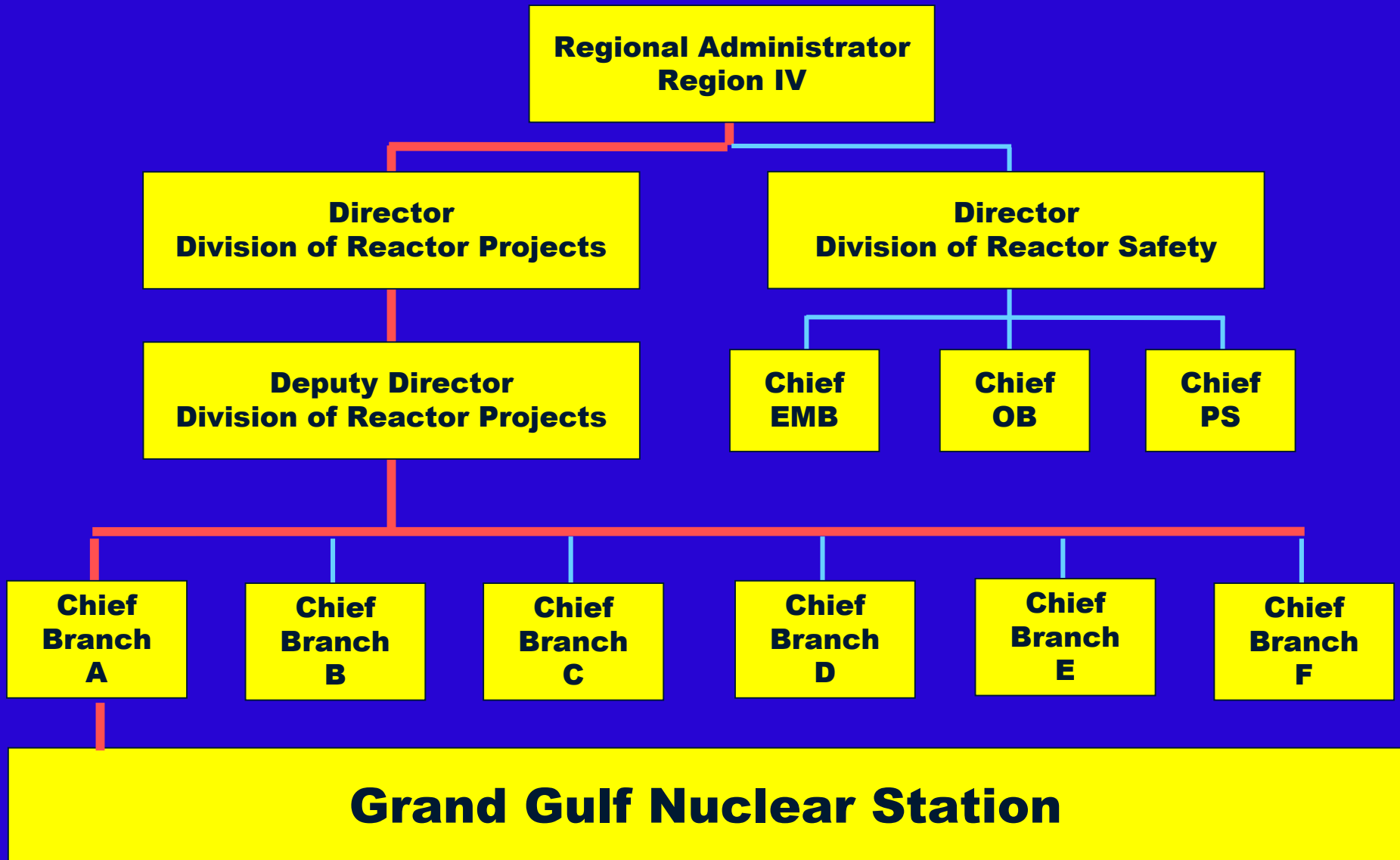
- **Maintain public safety and protect the environment**
- **Enhance public confidence**
- **Improve:**
 - **Effectiveness**
 - **Efficiency**
 - **Realism of processes and decision making**
- **Reduce unnecessary regulatory burden**



Assessment of Safety Performance **at Grand Gulf Nuclear Station**



Regional Organization



Grand Gulf Nuclear Station

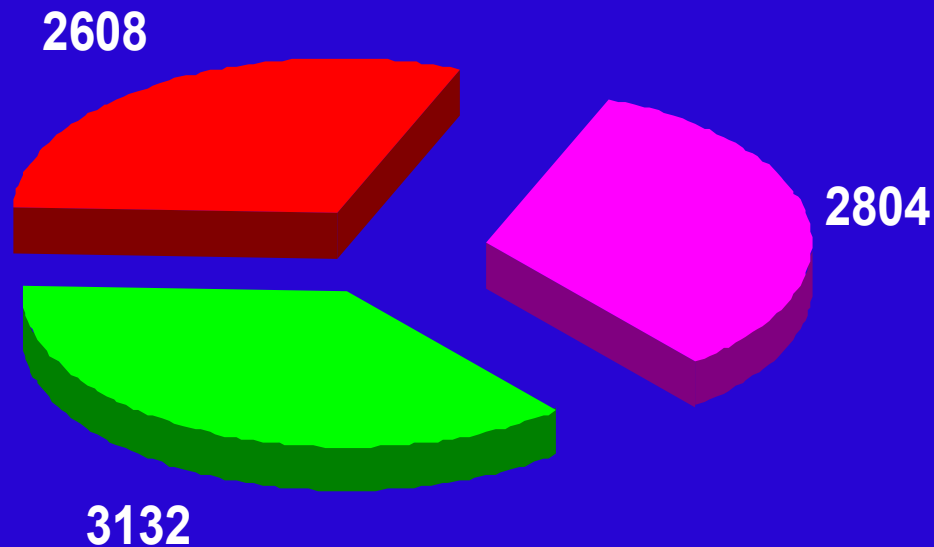


Meeting Agenda

- **REGULATORY OVERSIGHT**
- **FINDINGS AND ASSESSMENTS**
- **ADDITIONAL FOCUS AREAS**
- **QUESTIONS AND ANSWERS**



Overall NRC Effort



Total hours - 8544

■ Headquarters - 3132
■ Regional - 2608
■ Resident - 2804



Resident Inspectors

- **Stationed at the plant**
- **Prompt response capability**
- **2804 hours of oversight**



Regional Inspectors

- **Specialized**
- **Inspection teams**
- **2608 hours of oversight**



Comprehensive Oversight Program

**NRC'S
Overall
Safety
Mission**

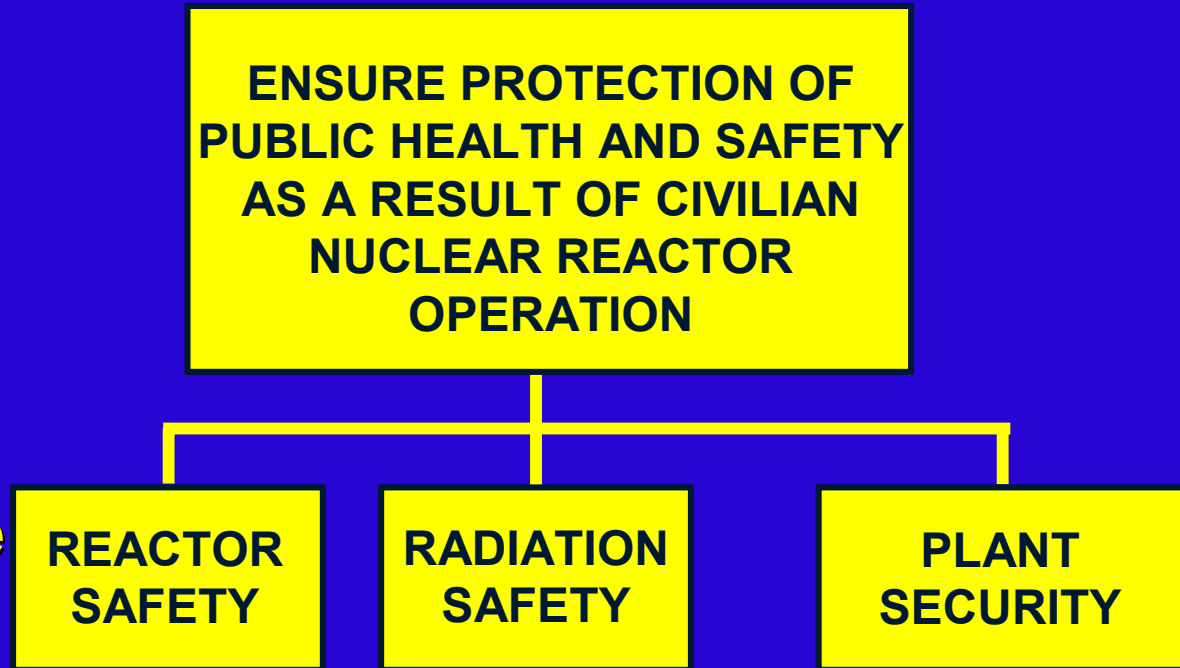
**ENSURE PROTECTION OF
PUBLIC HEALTH AND SAFETY
AS A RESULT OF CIVILIAN
NUCLEAR REACTOR
OPERATION**

**Strategic Performance
Areas**

**REACTOR
SAFETY**

**RADIATION
SAFETY**

**PLANT
SECURITY**

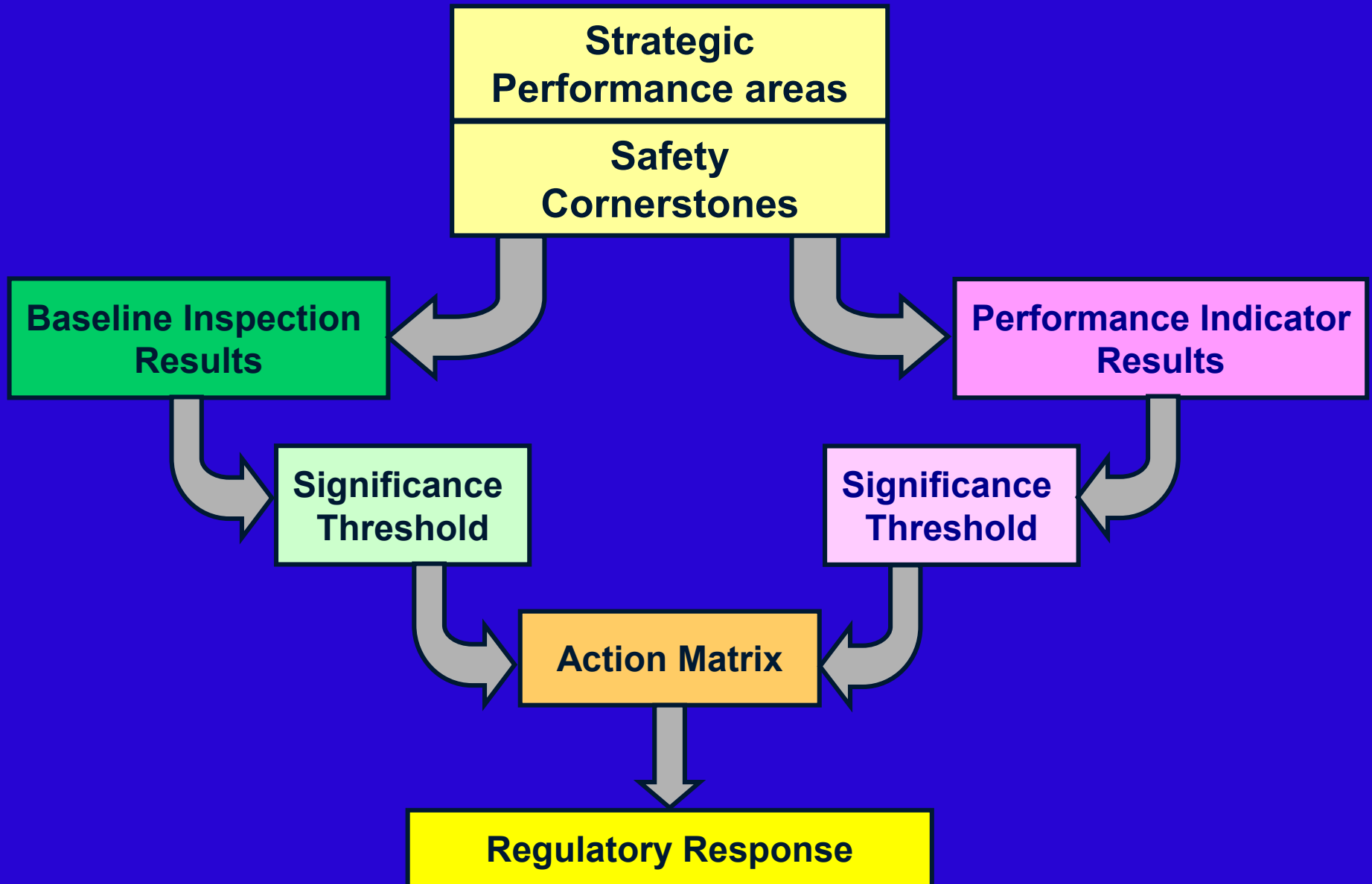


NRC Oversight Activities

- **Provide assurance plants are:**
 - **Operating safely**
 - **Complying with regulations**
- **Based on a logical and sound framework**
- **Inspections focused on key safety areas**
- **Objective indicators of performance**
- **Assessment program triggers regulatory actions**



Reactor Oversight Process



Baseline Inspection Program

- **Gathers objective evidence of plant safety**
- **Conducted at all plants**
- **Focuses on safety-significant:**
 - **systems**
 - **components**
 - **activities**
 - **events**



Baseline Inspection Program

- **Inspection reports describe significant findings and non-compliance**
- **Inspection reports are publicly accessible**

www.nrc.gov/reading-rm/adams.html



Event Follow-up and **Supplemental Inspections**

- **Review events for significance**
- **Follow-up significant inspection findings**
- **Determine causes of performance declines**
- **Provide for graduated response**



Reactor Oversight Process

SAFETY SIGNIFICANCE

GREEN

- very low

WHITE

- low to moderate

YELLOW

- substantial

RED

- high

Performance Indicator **Program**

- **Licensee monitors key safety parameters**
- **Data supplied to NRC quarterly**



Performance Indicators

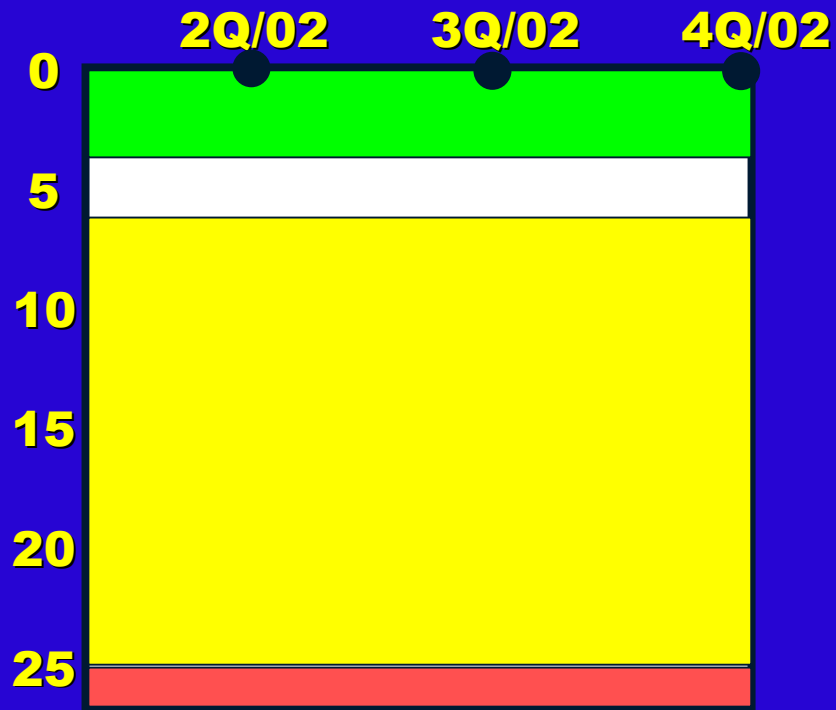
- **Performance indicator results and other assessment information available on the NRC's public web site:**

www.nrc.gov/NRR/OVERSIGHT/ASSESS/GG1/gg1_chart.html



Performance Indicators

Unplanned Scrams per 7000 critical hours



Thresholds:

White >3.0,

Yellow >6.0,

Red >25.0

Unplanned scrams per 7000 critical hours	2Q/02	3Q/02	4Q/02
Actual scrams	0	0	0
Critical hours	1541.0	2208	2208
Indicator value	0	0	0

Key Aspects of the Assessment Program

- **Objective review of licensee performance**
- **“Action Matrix” to determine agency response in three areas:**
 - **Inspection**
 - **Management Involvement**
 - **Regulatory Actions**
- **Plant specific assessment letters**
- **Information on NRC public web site**



Plant Safety

Performance Summary



Plant Specific Data

Name of Plant: Grand Gulf Nuclear Station

Plant Operator: Entergy Operations, Inc.

Number of Units: 1

Reactor Type & Vendor: Boiling Water Reactor/
General Electric

Location: Port Gibson, Mississippi

Power Output (electrical): 1300 Mwe net

Source of Circulating Water: Cooling Tower

Major Plant Activities in 2002

Installation of Auxiliary Cooling Tower

Received Power Uprate of 1.7 per cent

Inspection Results

NRC and Licensee identified inspection findings were of very low safety significance

No supplemental inspections were necessary as a result of 2002 inspection findings



Performance Indicator Results

**All performance indicators within
the Licensee Control Band**



Assessment Conclusion

Licensee effectively managed:

- Reactor safety**
- Radiation safety**
- Plant security**

**Grand Gulf Nuclear Station operated
in a manner that protected the health
and safety of the public**



LICENSEE RESPONSE



Additional Focus Areas

- **NRC Responds As-Needed**
- **Mandated Licensee Actions**
- **Implemented Emergency Preparedness**



Nuclear Industry Issues

- **Reactor Vessel Head Penetration Inspection**
- **Security at Nuclear Power Plants**

Security at Nuclear Power Plants

Nuclear Regulatory Commission:

- **Has expanded involvement with FBI, law enforcement and other intelligence agencies**
- **Communicates frequently with Department of Homeland Security, DOD, FAA, FEMA, and others**
- **Continues to work in concert with:**
 - **Licensees**
 - **State and local officials**



Security at Nuclear Power Plants

Threat Advisory and Protective Measures System:

- **communicates threats affecting NRC licensees**
- **corresponds to color-coded Homeland Security Presidential Directive**
- **Identifies specific actions to be taken by NRC licensees for each threat level**



Security at Nuclear Power Plants

- **NRC issued over 30 safeguards & threat advisories**
- **Many of those advisories strengthened security and have been elevated into requirements**
- **Nuclear facilities are far ahead of other industries with regards to the level of security**



Future Outlook

- **Power Uprates**
- **NRC has approved more than 80 applications to increase reactor power**
- **Approximately 51 applications for power uprates expected over next 5 years**



Future Outlook (Cont.)

- **License Renewal**
 - **A recent initiative**
 - **Applications for 14 units have been approved**
 - **16 applications are currently under review**
- **Grand Gulf**
 - **Announced intention to develop and submit an application for an Early Site Permit**



Conclusions

- **Assured Public Safety**
- **Flexible/Predictable Response**
- **Risk-Informed Programs**



Contacting the NRC

- **Report an Emergency:**
(301) 816-5100 (collect)
- **Report a Safety Concern:**
(800) 695-7403 or Allegation@nrc.gov
- **General Information or questions:**
www.nrc.gov

Select “What we do” for Public Affairs

Contacts for Additional Information

- **Regional Public Affairs Officer**

- **Victor Dricks**

- **Phone: (817) 860 – 8128**

- **State Liaison Officer**

- **William (Bill) Maier**

- **Phone: (817) 860 - 8267**