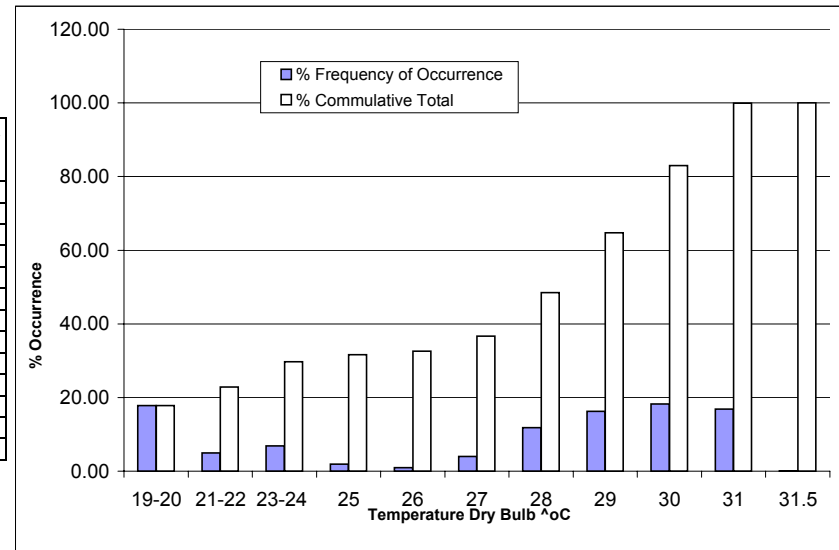


Dry Bulb Temperature - Hourly Frequency of Occurrence at Station 34+86m, ESF Loop for the Period June 12 through December 31, 2000

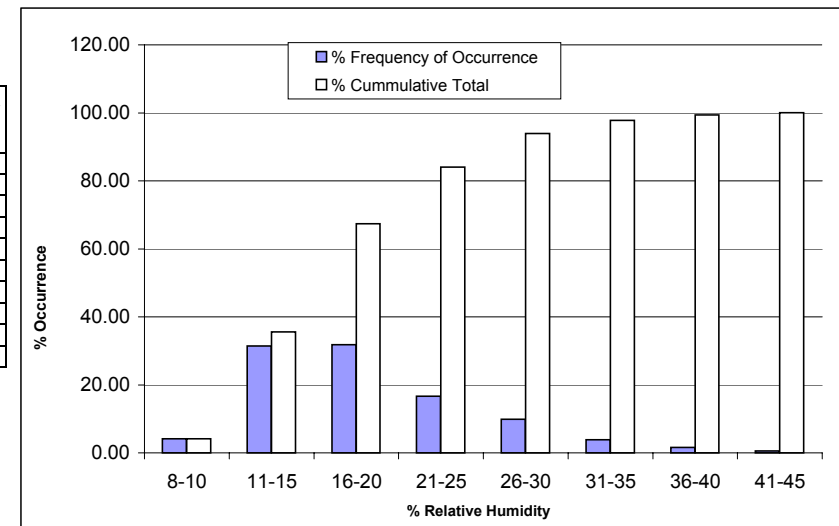
Temperature ^oC	% Total Frequency	Cummulative % Total	Reading Line		Total Frequency Occurrence
			From	To	
19-20	17.83	17.83	1	644	644
21-22	4.98	22.82	645	824	180
23-24	6.87	29.69	825	1072	248
25	1.94	31.63	1073	1142	70
26	1.00	32.62	1143	1178	36
27	4.02	36.64	1179	1323	145
28	11.85	48.49	1324	1751	428
29	16.23	64.72	1752	2337	586
30	18.28	83.00	2338	2997	660
31	16.89	99.89	2998	3607	610
31.5	0.11	100.00	3608	3611	4
100			Total Readings Evaluated		3611

Dominance in Percent Frequency of Occurrence



Relative Humidity - Hourly Frequency of Occurrence at Station 34+86m, ESF Loop for the Period June 12, 2000 through December 31, 2000

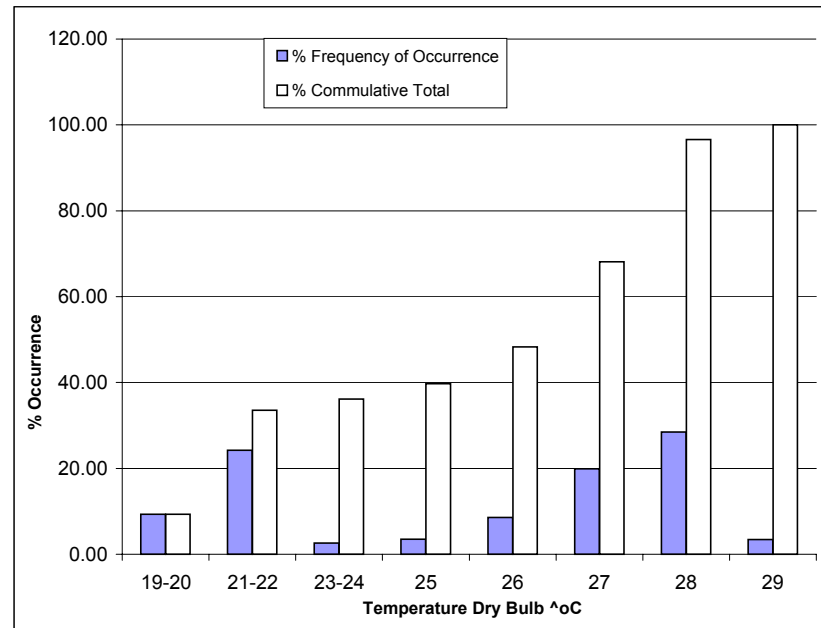
% Relative Humidity	% Total Frequency	Cummulative % Total	Reading Line		Total Frequency Occurrence
			From	To	
8-10	4.15	4.15	1	150	150
11-15	31.46	35.61	151	1286	1136
16-20	31.79	67.41	1287	2434	1148
21-25	16.64	84.05	2435	3035	601
26-30	9.91	93.96	3036	3393	358
31-35	3.85	97.81	3394	3532	139
36-40	1.61	99.42	3533	3590	58
41-45	0.58	100.00	3591	3611	21
100			Total Readings Evaluated		3611



Dry Bulb Temperature - Hourly Frequency of Occurrence at Station 50+35m, ESF Loop for the Period January 1-10, 2000 and July 24 through December 27, 2000.

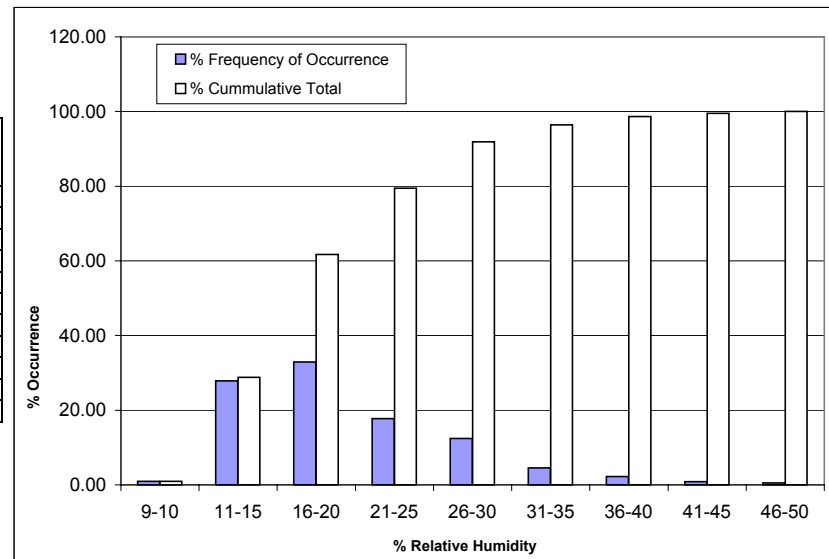
Temperature ^oC	% Total Frequency	Cummulative % Total	Reading Line		Total Frequency Occurrence
			From	To	
19-20	9.32	9.32	1	341	341
21-22	24.24	33.56	342	1228	887
23-24	2.62	36.18	1229	1324	96
25	3.53	39.71	1325	1453	129
26	8.55	48.26	1454	1766	313
27	19.87	68.13	1767	2493	727
28	28.45	96.58	2494	3534	1041
29	3.42	100.00	3535	3659	125
	100		Total Readings Evaluated		3659

Dominance in Percent Frequency of Occurrence



Relative Humidity - Hourly Frequency of Occurrence at Station 50+35m, ESF Loop for the Period January 1-10, 2000 and July 24 through December 27, 2000.

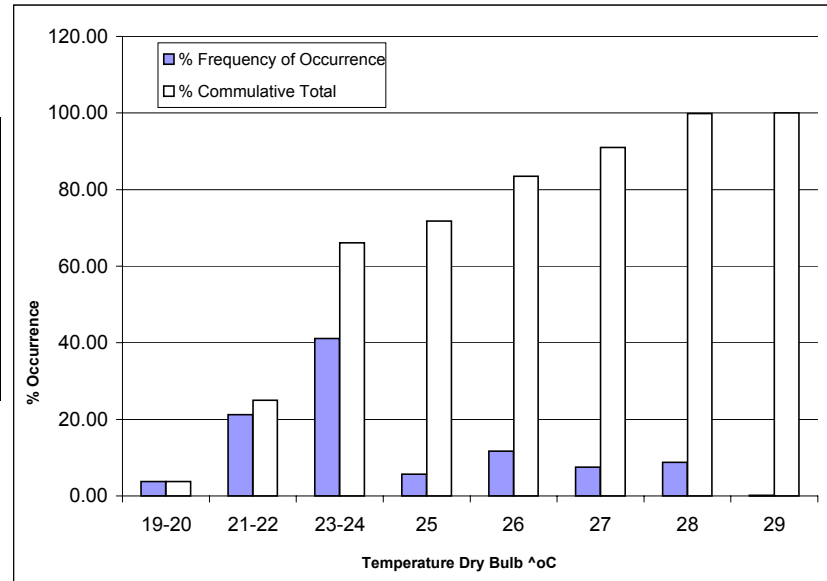
% Relative Humidity	% Total Frequency	Cummulative % Total	Reading Line		Total Frequency Occurrence
			From	To	
9-10	0.96	0.96	1	35	35
11-15	27.88	28.83	36	1055	1020
16-20	32.88	61.71	1056	2258	1203
21-25	17.74	79.45	2259	2907	649
26-30	12.46	91.91	2908	3363	456
31-35	4.51	96.42	3364	3528	165
36-40	2.21	98.63	3529	3609	81
41-45	0.85	99.48	3610	3640	31
46-50	0.52	100.00	3641	3659	19
	100		Total Readings Evaluated		3659



Dry Bulb Temperature - Hourly Frequency of Occurrence at Station 57+50m, ESF Loop for the Period January 10, 2000 through July 24, 2000

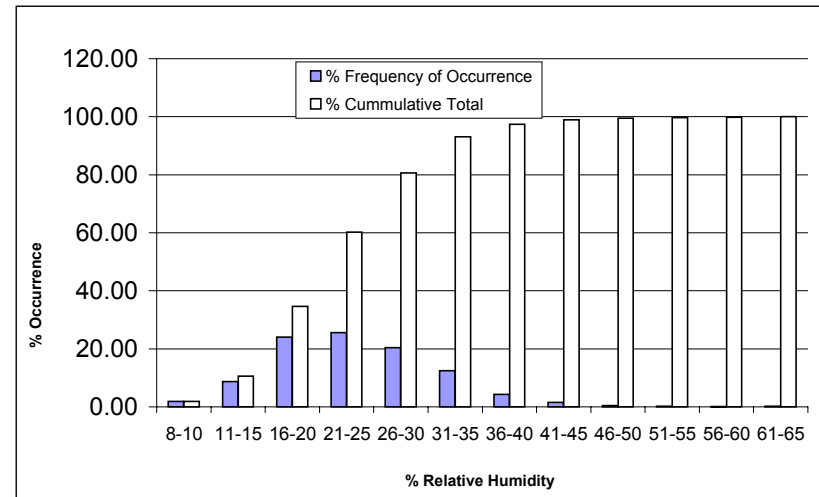
Temperature ^oC	% Total Frequency	Cummulative % Total	Reading Line		Total Frequency Occurrence
			From	To	
19-20	3.74	3.74	1	175	175
21-22	21.23	24.97	176	1168	993
23-24	41.11	66.08	1169	3091	1923
25	5.71	71.78	3092	3358	267
26	11.74	83.52	3359	3907	549
27	7.52	91.04	3908	4259	352
28	8.81	99.85	4260	4671	412
29	0.15	100.00	4672	4678	7
	100		Total Readings Evaluated		4678

Dominance in Percent Frequency of Occurrence



Relative Humidity - Hourly Frequency of Occurrence at Station 57+50m, ESF Loop for the Period January 10, 2000 through July 24, 2000.

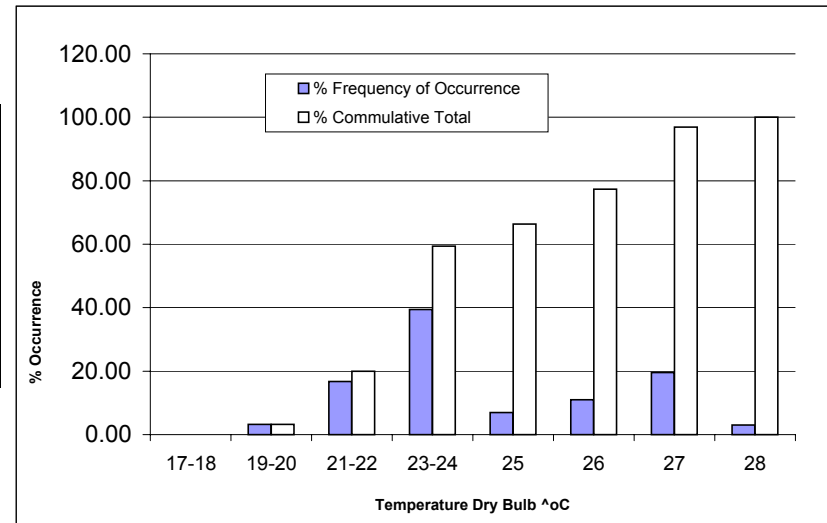
% Relative Humidity	% Total Frequency	Cummulative % Total	Reading Line		Total Frequency Occurrence
			From	To	
8-10	1.84	1.84	1	86	86
11-15	8.76	10.60	87	496	410
16-20	24.01	34.61	497	1619	1123
21-25	25.63	60.24	1620	2818	1199
26-30	20.44	80.68	2819	3774	956
31-35	12.46	93.14	3775	4357	583
36-40	4.28	97.41	4358	4557	200
41-45	1.56	98.97	4558	4630	73
46-50	0.47	99.44	4631	4652	22
51-55	0.21	99.66	4653	4662	10
56-60	0.15	99.81	4663	4669	7
61-65	0.19	100.00	4670	4678	9
	100		Total Readings Evaluated		4678



Dry Bulb Temperature - Hourly Frequency of Occurrence at Station 76+70m, ESF Loop for the Period January 1, 2000 through December 31, 2000.

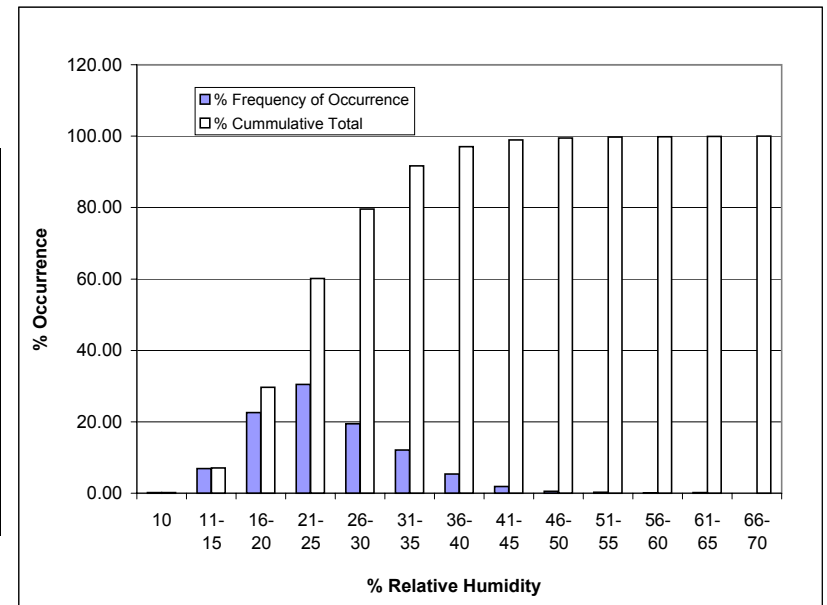
Temperature ^oC	% Total Frequency	Cumulative % Total	Reading Line		Total Frequency Occurrence
			From	To	
17-18	0.01	0.01	1	1	1
19-20	3.25	3.26	2	281	280
21-22	16.72	19.98	282	1723	1442
23-24	39.46	59.43	1724	5126	3403
25	6.94	66.38	5127	5725	599
26	11.00	77.38	5726	6674	949
27	19.57	96.95	6675	8362	1688
28	3.05	100.00	8363	8625	263
	100		Total Readings Evaluated		8625

Dominance in Percent Frequency of Occurrence



Relative Humidity - Hourly Frequency of Occurrence at Station 76+70m, ESF Loop for the Period January 1, 2000 through December 31, 2000.

% Relative Humidity	% Total Frequency	Cumulative % Total	Reading Line		Total Frequency Occurrence
			From	To	
10	0.17	0.17	1	15	15
11-15	6.91	7.08	16	611	596
16-20	22.60	29.68	612	2560	1949
21-25	30.45	60.13	2561	5186	2626
26-30	19.46	79.58	5187	6864	1678
31-35	12.14	91.72	6865	7911	1047
36-40	5.38	97.10	7912	8375	464
41-45	1.86	98.96	8376	8535	160
46-50	0.53	99.49	8536	8581	46
51-55	0.28	99.77	8582	8605	24
56-60	0.06	99.83	8606	8610	5
61-65	0.14	99.97	8611	8622	12
66-70	0.03	100.00	8623	8625	3
	100		Total Readings Evaluated		8625



**Station 76+70m, ESF Loop - Dry Bulb Temp Hourly Frequency, Period Jan 1,
2000 through Dec 31, 2000.**

Temp. ^oC	% Total Frequency	Reading Line		Total Frequency Occurrence
		From	To	
17-18	0.01	1	1	1
19-20	3.25	2	281	280
21-22	16.72	282	1723	1442
23-24	39.46	1724	5126	3403
25	6.94	5127	5725	599
26	11.00	5726	6674	949
27	19.57	6675	8362	1688
28	3.05	8363	8625	263
	100		Total	8625

**Station 76+70m, ESF Loop - Relative Humidity Hourly Frequency, Period Jan 1,
2000 through Dec 31, 2000.**

% RH	% Total Frequency	Reading Line		Total Frequency Occurrence
		From	To	
10	0.17	1	15	15
11-15	6.91	16	611	596
16-20	22.60	612	2560	1949
21-25	30.45	2561	5186	2626
26-30	19.46	5187	6864	1678
31-35	12.14	6865	7911	1047
36-40	5.38	7912	8375	464
41-45	1.86	8376	8535	160
46-50	0.53	8536	8581	46
51-55	0.28	8582	8605	24
56-60	0.06	8606	8610	5
61-65	0.14	8611	8622	12
66-70	0.03	8623	8625	3
	100		Total	8625

File - H:\RJurani\ESF Air Temperature & Humidity Distribution Record

**Station 57+50m, ESF Loop - Dry Bulb Temp Hourly Frequency, Period
Jan 10, 2000 through July 24, 2000.**

Temp. ^oC	% Total Frequency	Reading Line		Total Frequency Occurrence
		From	To	
19-20	3.74	1	175	175
21-22	21.23	176	1168	993
23-24	41.11	1169	3091	1923
25	5.71	3092	3358	267
26	11.74	3359	3907	549
27	7.52	3908	4259	352
28	8.81	4260	4671	412
29	0.15	4672	4678	7
	100		Total	4678

**Station 57+50m, ESF Loop - Relative Humidity Hourly Frequency, Period
Jan 10, 2000 through Jul 24, 2000.**

% RH	% Total Frequency	Reading Line		Total Frequency Occurrence
		From	To	
8-10	1.84	1	86	86
11-15	8.76	87	496	410
16-20	24.01	497	1619	1123
21-25	25.63	1620	2818	1199
26-30	20.44	2819	3774	956
31-35	12.46	3775	4357	583
36-40	4.28	4358	4557	200
41-45	1.56	4558	4630	73
46-50	0.47	4631	4652	22
51-55	0.21	4653	4662	10
56-60	0.15	4663	4669	7
61-65	0.19	4670	4678	9
	100		Total	4678

File - H:\RJurani\ESF Air Temperature & Humidity Distribution Record

Station 50+35m, ESF Loop - Dry Bulb Temp Hourly Frequency, Period Jan 1-10, 2000 and July 24 through Dec 27, 2000.

Temp. ^oC	% Total Frequency	Reading Line		Total Frequency Occurrence
		From	To	
19-20	9.32	1	341	341
21-22	24.24	342	1228	887
23-24	2.62	1229	1324	96
25	3.53	1325	1453	129
26	8.55	1454	1766	313
27	19.87	1767	2493	727
28	28.45	2494	3534	1041
29	3.42	3535	3659	125
	100		Total	3659

Station 50+35m, ESF Loop - Relative Humidity Hourly Frequency, Period Jan 1-10, 2000 and Jul 24 through Dec 27, 2000.

% RH	% Total Frequency	Reading Line		Total Frequency Occurrence
		From	To	
9-10	0.96	1	35	35
11-15	27.88	36	1055	1020
16-20	32.88	1056	2258	1203
21-25	17.74	2259	2907	649
26-30	12.46	2908	3363	456
31-35	4.51	3364	3528	165
36-40	2.21	3529	3609	81
41-45	0.85	3610	3640	31
46-49.8	0.52	3641	3659	19
	100		Total	3659

File - H:\RJurani\ESF Air Temperature & Humidity Distribution Record

Station 34+86m, ESF Loop - Dry Bulb Temp Hourly Frequency, Period Jun 12 through Dec 31, 2000.

Temp. ^oC	% Total Frequency	Reading Line		Total Frequency Occurrence
		From	To	
19-20	17.83	1	644	644
21-22	4.98	645	824	180
23-24	6.87	825	1072	248
25	1.94	1073	1142	70
26	1.00	1143	1178	36
27	4.02	1179	1323	145
28	11.85	1324	1751	428
29	16.23	1752	2337	586
30	18.28	2338	2997	660
31	16.89	2998	3607	610
31.5	0.11	3608	3611	4
	100		Total	3611

Station 34+86m, ESF Loop - Relative Humidity Hourly Frequency, Period Jun 12, 2000 through Dec 31, 2000.

% RH	% Total Frequency	Reading Line		Total Frequency Occurrence
		From	To	
8-10	4.15	1	150	150
11-15	31.46	151	1286	1136
16-20	31.79	1287	2434	1148
21-25	16.64	2435	3035	601
26-30	9.91	3036	3393	358
31-35	3.85	3394	3532	139
36-40	1.61	3533	3590	58
41-44.8	0.58	3591	3611	21
	100		Total	3611

File - H:\RJurani\ESF Air Temperature & Humidity Distribution Record