

**Westinghouse Non-Proprietary Class 3**

WCAP-16103-NP  
Revision 0

April 2003

# **IRIS Scaling Analysis**

## **Part I**



## LEGAL NOTICE

This report was prepared as an account of work performed by Westinghouse Electric Company LLC and its partners in the IRIS program. Neither Westinghouse Electric Company LLC, its partners nor any person acting on their behalf:

- A. Makes any warranty or representation, express or implied including the warranties of fitness for a particular purpose or merchantability, with respect to the accuracy, completeness, or usefulness of the information contained in this report, or that the use of any information, apparatus, method, or process disclosed in this report may not infringe privately owned rights; or
- B. Assumes any liabilities with respect to the use of, or for damages resulting from the use of, any information, apparatus, method, or process disclosed in this report.

WCAP-16103-NP

# IRIS Scaling Analysis

## Part I

April 24, 2003



---

Westinghouse Electric Company LLC  
Science and Technology Department  
1344 Beulah Road  
Pittsburgh, PA 15235-5083

©2003 Westinghouse Electric Company LLC  
All Rights Reserved

---

[This page intentionally left blank]

## **FOREWORD**

This document, IRIS Scaling Analysis Part I covers Stage 1 (System Decomposition) and 2 (Scale Identification) of the Hierarchical, Two-Tiered Scaling Analysis.

Stage 3 (Top-Down System Scaling Analysis) and 4 (Bottom-Up Process Scaling Analysis) will be submitted as Part 2 and Part 3 respectively.

## TABLE OF CONTENTS

1.0	Scaling methodology - Introduction to Hierarchical, Two-Tiered Scaling Analysis (Part 1) .....	1-1
2.0	Stage 1 - System Decomposition (Part 1).....	2-1
3.0	Stage 2 - Scale Identification (Part 1).....	3-1
4.0	Stage 3 - Top-Down Scaling (Part 2) .....	4-1
5.0	Stage 4 - Bottom-Up Scaling (Part 3).....	5-1
6.0	Conclusions (Part 3) .....	6-1

## TABLE LIST

Table 2.1	IRIS Systems, Subsystems and Modules.....	2-3
-----------	---	-----

## FIGURE LIST

Figure 1.1	Scaling analysis as a part of Transient and Accident Analysis Methods	1-2
Figure 1.2	Flow Diagram for Hierarchical, Two-Tiered Scaling Analysis	1-3
Figure 2.1	An Example of the System Decomposition and Hierarchy	2-1
Figure 2.2	IRIS Subsystems and Modules	2-2
Figure 2.3	IRIS Breakdown and Hierarchy [	](a,c)
Figure 3.1	IRIS Scale Identification [	](a,c)

## NOMENCLATURE

### List of Symbols

$A_{ik}$  area for transfer between “i” and “k” constituents

$D = (\Pi_m - \Pi_p) / \Pi_p$  distortion in the model

$j_{ik}$  flux between “i” and “k” constituents

$Q_i$  volumetric flow rate of constituent “i”

$S_i$  distributed sources per unit volume of constituent “i”

$t$  time

$u_i$  internal energy of constituent “i”

$\vec{v}_i$  velocity of constituent “i”

$V_i$  volume occupied by constituent “i”

### Greek Letters

$\alpha_i$  volume fraction of constituent “i”

$\Delta[Q_i\psi_i] = [Q_i\psi_i]_{in} - [Q_i\psi_i]_{out}$  convection term

$\Pi^{ik} = \frac{j_{ik}A_{ik}}{Q_i\psi_i}$  specific time ratio for transient process between constituents “i” and “k”

$\Pi_{ki} = \frac{\psi_i\alpha_i}{\psi_k\alpha_k}\omega_{ik}^s\tau_k$  characteristic time ratio

$\Pi_m$  model characteristic time ratio

$\Pi_p$  prototype characteristic time ratio

$\Pi^{si} = \frac{S_i}{Q_i\psi_i}$  specific time ratio for the distributed source term within control volume of constituent “i”

$\rho_i$  density of constituent “i”

$$\tau_i = \frac{V_i}{Q_i} \quad \text{residence time of constituent "i"}$$

$$\psi_i = \rho_i, \rho_i \vec{v}_i, \rho_i u_i \quad \text{conserved property of constituent "i" per unit volume}$$

$$\omega_{ik}^S = \frac{j_{ik} A_{ik}}{V_i \psi_i} \quad \text{specific frequency of constituent "i" interacting with constituent "k"}$$

#### List of superscripts

+            dimensionless

*S*            specific

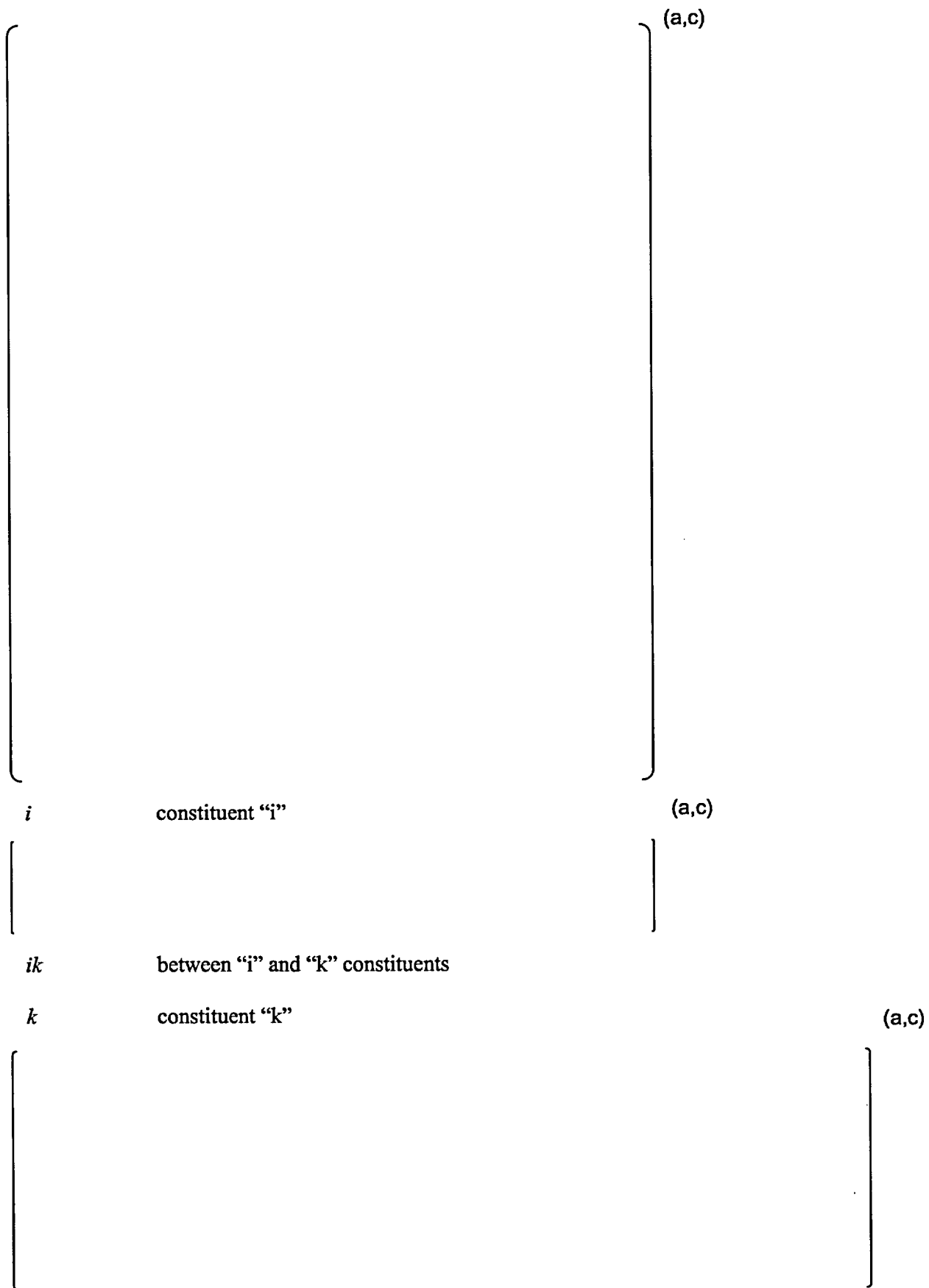
#### List of subscripts

0            at  $t = 0$ , initial conditions

#### List of subscripts and superscripts

(a,c)





*mass*

mass

*momentum*

momentum

(a,c)

1891  
1892  
1893  
1894  
1895  
1896  
1897  
1898  
1899  
1900  
1901  
1902  
1903  
1904  
1905  
1906  
1907  
1908  
1909  
1910  
1911  
1912  
1913  
1914  
1915  
1916  
1917  
1918  
1919  
1920  
1921  
1922  
1923  
1924  
1925  
1926  
1927  
1928  
1929  
1930  
1931  
1932  
1933  
1934  
1935  
1936  
1937  
1938  
1939  
1940  
1941  
1942  
1943  
1944  
1945  
1946  
1947  
1948  
1949  
1950  
1951  
1952  
1953  
1954  
1955  
1956  
1957  
1958  
1959  
1960  
1961  
1962  
1963  
1964  
1965  
1966  
1967  
1968  
1969  
1970  
1971  
1972  
1973  
1974  
1975  
1976  
1977  
1978  
1979  
1980  
1981  
1982  
1983  
1984  
1985  
1986  
1987  
1988  
1989  
1990  
1991  
1992  
1993  
1994  
1995  
1996  
1997  
1998  
1999  
2000  
2001  
2002  
2003  
2004  
2005  
2006  
2007  
2008  
2009  
2010  
2011  
2012  
2013  
2014  
2015  
2016  
2017  
2018  
2019  
2020  
2021  
2022  
2023  
2024  
2025  
2026  
2027  
2028  
2029  
2030  
2031  
2032  
2033  
2034  
2035  
2036  
2037  
2038  
2039  
2040  
2041  
2042  
2043  
2044  
2045  
2046  
2047  
2048  
2049  
2050  
2051  
2052  
2053  
2054  
2055  
2056  
2057  
2058  
2059  
2060  
2061  
2062  
2063  
2064  
2065  
2066  
2067  
2068  
2069  
2070  
2071  
2072  
2073  
2074  
2075  
2076  
2077  
2078  
2079  
2080  
2081  
2082  
2083  
2084  
2085  
2086  
2087  
2088  
2089  
2090  
2091  
2092  
2093  
2094  
2095  
2096  
2097  
2098  
2099  
2100  
2101  
2102  
2103  
2104  
2105  
2106  
2107  
2108  
2109  
2110  
2111  
2112  
2113  
2114  
2115  
2116  
2117  
2118  
2119  
2120  
2121  
2122  
2123  
2124  
2125  
2126  
2127  
2128  
2129  
2130  
2131  
2132  
2133  
2134  
2135  
2136  
2137  
2138  
2139  
2140  
2141  
2142  
2143  
2144  
2145  
2146  
2147  
2148  
2149  
2150  
2151  
2152  
2153  
2154  
2155  
2156  
2157  
2158  
2159  
2160  
2161  
2162  
2163  
2164  
2165  
2166  
2167  
2168  
2169  
2170  
2171  
2172  
2173  
2174  
2175  
2176  
2177  
2178  
2179  
2180  
2181  
2182  
2183  
2184  
2185  
2186  
2187  
2188  
2189  
2190  
2191  
2192  
2193  
2194  
2195  
2196  
2197  
2198  
2199  
2200  
2201  
2202  
2203  
2204  
2205  
2206  
2207  
2208  
2209  
2210  
2211  
2212  
2213  
2214  
2215  
2216  
2217  
2218  
2219  
2220  
2221  
2222  
2223  
2224  
2225  
2226  
2227  
2228  
2229  
2230  
2231  
2232  
2233  
2234  
2235  
2236  
2237  
2238  
2239  
2240  
2241  
2242  
2243  
2244  
2245  
2246  
2247  
2248  
2249  
2250  
2251  
2252  
2253  
2254  
2255  
2256  
2257  
2258  
2259  
2260  
2261  
2262  
2263  
2264  
2265  
2266  
2267  
2268  
2269  
2270  
2271  
2272  
2273  
2274  
2275  
2276  
2277  
2278  
2279  
2280  
2281  
2282  
2283  
2284  
2285  
2286  
2287  
2288  
2289  
2290  
2291  
2292  
2293  
2294  
2295  
2296  
2297  
2298  
2299  
2300  
2301  
2302  
2303  
2304  
2305  
2306  
2307  
2308  
2309  
2310  
2311  
2312  
2313  
2314  
2315  
2316  
2317  
2318  
2319  
2320  
2321  
2322  
2323  
2324  
2325  
2326  
2327  
2328  
2329  
2330  
2331  
2332  
2333  
2334  
2335  
2336  
2337  
2338  
2339  
2340  
2341  
2342  
2343  
2344  
2345  
2346  
2347  
2348  
2349  
2350  
2351  
2352  
2353  
2354  
2355  
2356  
2357  
2358  
2359  
2360  
2361  
2362  
2363  
2364  
2365  
2366  
2367  
2368  
2369  
2370  
2371  
2372  
2373  
2374  
2375  
2376  
2377  
2378  
2379  
2380  
2381  
2382  
2383  
2384  
2385  
2386  
2387  
2388  
2389  
2390  
2391  
2392  
2393  
2394  
2395  
2396  
2397  
2398  
2399  
2400  
2401  
2402  
2403  
2404  
2405  
2406  
2407  
2408  
2409  
2410  
2411  
2412  
2413  
2414  
2415  
2416  
2417  
2418  
2419  
2420  
2421  
2422  
2423  
2424  
2425  
2426  
2427  
2428  
2429  
2430  
2431  
2432  
2433  
2434  
2435  
2436  
2437  
2438  
2439  
2440  
2441  
2442  
2443  
2444  
2445  
2446  
2447  
2448  
2449  
2450  
2451  
2452  
2453  
2454  
2455  
2456  
2457  
2458  
2459  
2460  
2461  
2462  
2463  
2464  
2465  
2466  
2467  
2468  
2469  
2470  
2471  
2472  
2473  
2474  
2475  
2476  
2477  
2478  
2479  
2480  
2481  
2482  
2483  
2484  
2485  
2486  
2487  
2488  
2489  
2490  
2491  
2492  
2493  
2494  
2495  
2496  
2497  
2498  
2499  
2500  
2501  
2502  
2503  
2504  
2505  
2506  
2507  
2508  
2509  
2510  
2511  
2512  
2513  
2514  
2515  
2516  
2517  
2518  
2519  
2520  
2521  
2522  
2523  
2524  
2525  
2526  
2527  
2528  
2529  
2530  
2531  
2532  
2533  
2534  
2535  
2536  
2537  
2538  
2539  
2540  
2541  
2542  
2543  
2544  
2545  
2546  
2547  
2548  
2549  
2550  
2551  
2552  
2553  
2554  
2555  
2556  
2557  
2558  
2559  
2560  
2561  
2562  
2563  
2564  
2565  
2566  
2567  
2568

[This page is intentionally left blank ]

## 1.0 Scaling methodology – Introduction to Hierarchical, Two-Tiered Scaling Analysis

The scaling analysis will be a part of Transient and Accident Analysis Methods (according to “Elements of Evaluation Model Development and Assessment Process - EMDAP” - see, Staudenmeier, 2002). Portions of the EMDAP procedure where scaling analysis is applied are highlighted in Figure 1.1.

The Hierarchical, Two-Tiered Scaling (H2TS) Analysis Methodology (see Zuber, 1991) will be applied for the IRIS System. The methodology uses concepts from the hierarchical theory presented by Mesarovic et al., 1970 and the concept of time-scale modeling used to analyze large power systems (presented in Chow, 1986).

The H2TS methodology generates quantitative results useful for technical management of the projects. It can obtain a proper balance between experimentation and computer code application by establishing priorities for experiments, test facility design and operation and for computer code development, validation and uncertainty quantification. It can also establish a procedure for performing efficient and adequate technical reviews.

The Hierarchical Two-Tiered Scaling Analysis Methodology is based on characteristic time ratios, which can be established for each transfer process that occurs between the constituents of a system. The characteristic time ratio

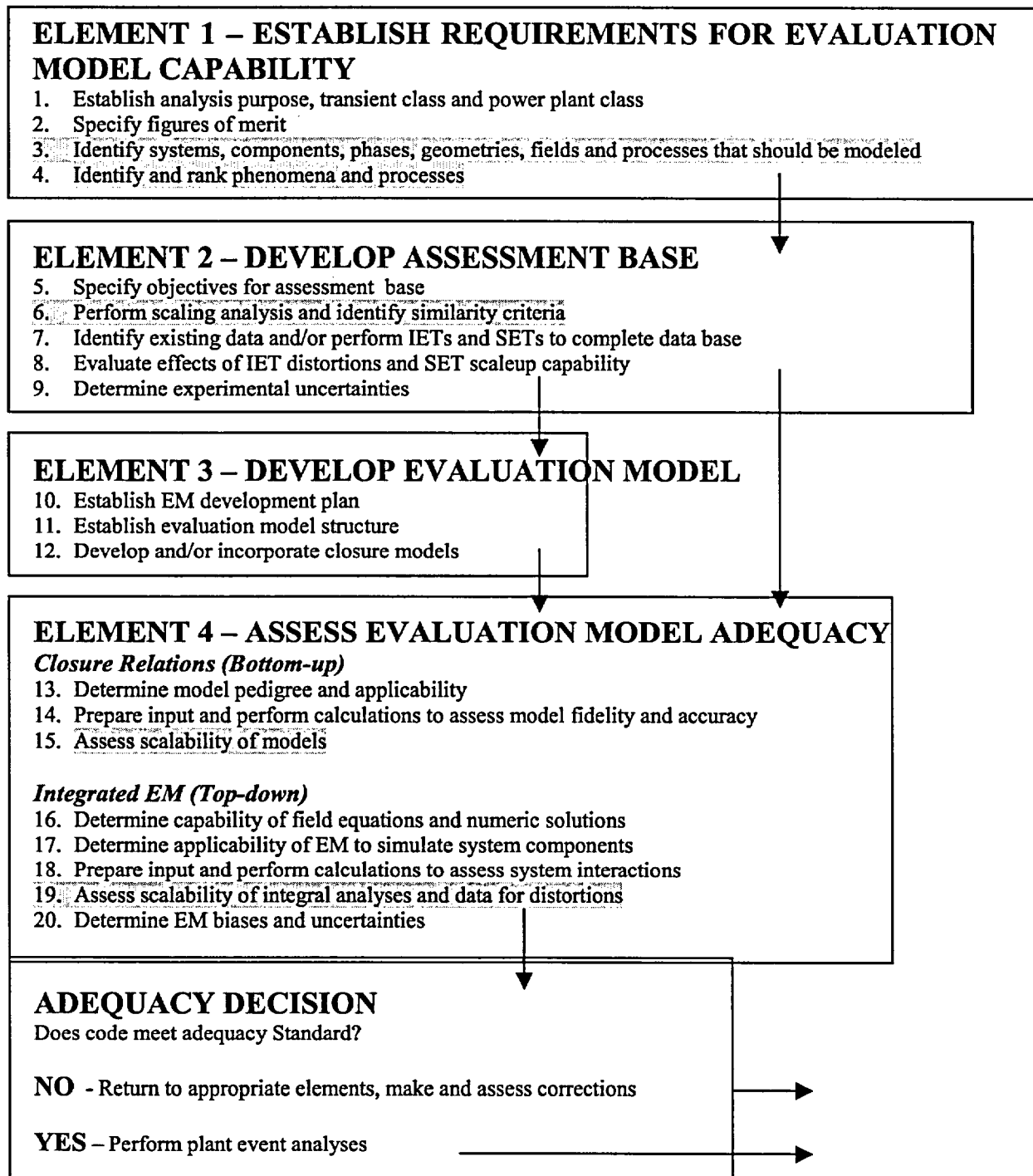
- a) combines the temporal and spatial scales of the transfer process and of the system, and
- b) provides a quantitative measure for evaluating the effect of the transfer process on the system.

The hierarchical structure and the characteristic time ratios provide dimensionless similarity groups and, by comparing their numerical values, priorities can be established for preserving similarity groups between a test facility and the actual components.

The same procedure can be used to identify and prioritize the physico-chemical processes which should be modeled in the computer codes simulations, and to identify important parameters for code sensitivity calculations and code uncertainty qualification.

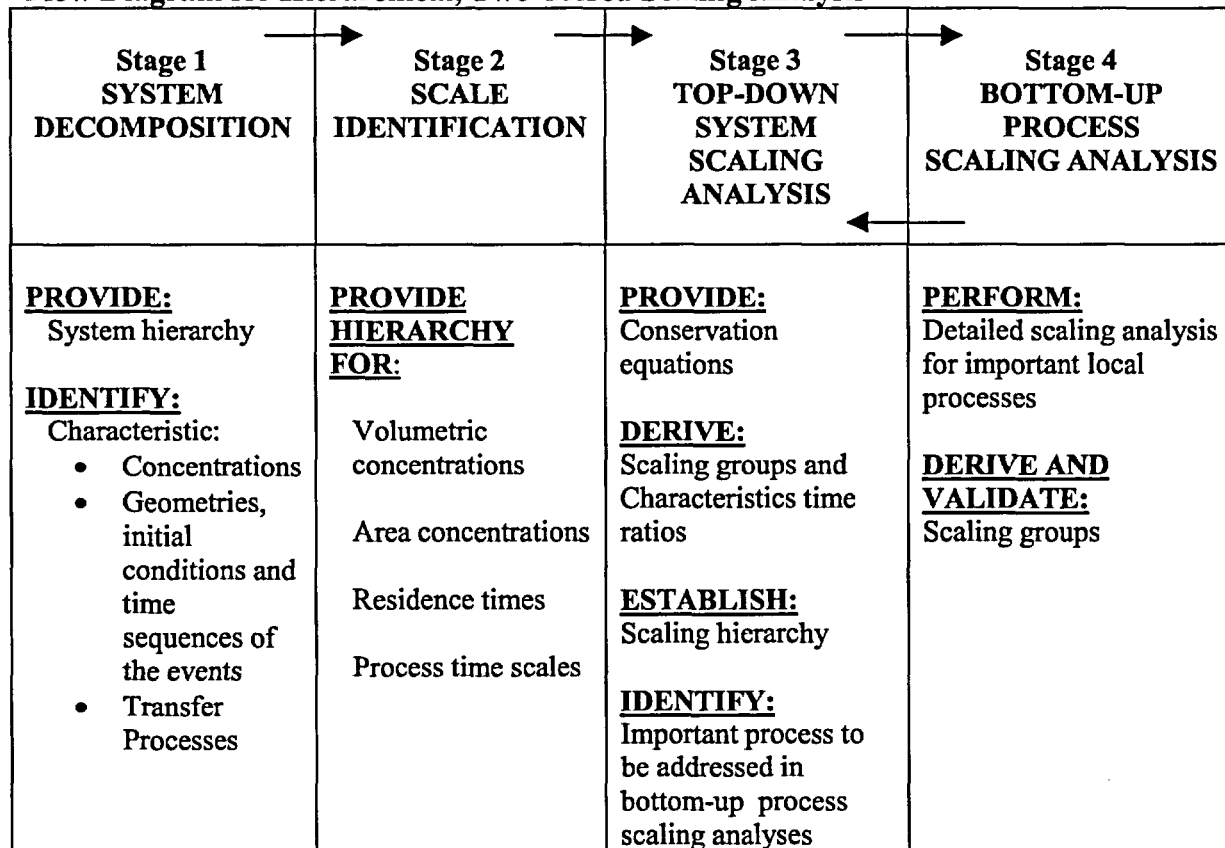
Figure 1.2 presents the flow diagram with the four elements of the H2TS methodology.

The physical decomposition of the system is carried out in the first stage (see Stage 1 in Figure 1.2) of the methodology. Three classes of scales (measures) need to be identified at the beginning of the scaling analysis. The amounts of constituents (or their concentrations) present in the system is one class. The second class is spatial (geometrical) and temporal (initial conditions and time sequences of the events affecting the system) characteristics of the system. The third class is concerned with the various transfer processes.



**Figure 1.1 Scaling analysis as a part of Transient and Accident Analysis Methods (according to “Elements of Evaluation Model Development and Assessment Process - EMDAP” - see, Staudenmeier, 2002)**

**Flow Diagram for Hierarchical, Two-Tiered Scaling Analysis**



**Figure 1.2 Flow Diagram for Hierarchical, Two-Tiered Scaling Analysis**  
(from Zuber, 1991)

The hierarchies for the three classes are established in the second stage of the methodology (see Stage 2 in Figure 1.2). A spatial and temporal scale that relates each constituent to the system needs to be defined. Also, two spatial scales and two temporal scales need to be associated with each transfer process to account for the effects on two different media (constituents, or phases) separated by the same transfer area, but occupying two different volumes and having different flow rates.

The third stage (see Stage 3 in Figure 1.2) of the H2TS methodology is Top-Down System Scaling Analysis. After providing the adequate conservation equations, the scaling groups and characteristics time ratios can be calculated. Then, the scaling hierarchy and identification of the important processes to be addressed in the last stage (see Stage 4 - Bottom-Up scaling analyses in Figure 1.2) can be obtained.

The H2TS method is used to develop sets of specific and characteristic time ratios for the transfer processes.

The control volume balance equation for constituent "i" is

$$\frac{dV_i\psi_i}{dt} = \Delta[Q_i\psi_i] \pm \sum_{k=1}^{m-1} (j_{ik}A_{ik}) + S_i$$

where

$\Delta[Q_i\psi_i] = [Q_i\psi_i]_{in} - [Q_i\psi_i]_{out}$  is convection term

$\psi_i = \rho_i, \rho_i v_i, \rho_i u_i$  is conserved property per unit volume

$V_i$  volume occupied by constituent "i"

$Q_i$  volumetric flow rate of "i"

$j_{ik}$  flux between "i" and "k" constituents

$A_{ik}$  area for transfer between "i" and "k"

$S_i$  distributed sources per unit volume

Or in dimensionless form

$$\tau_i \frac{dV_i^+\psi_i^+}{dt} = \Delta[Q_i^+\psi_i^+] \pm \sum_{k=1}^{m-1} (\Pi_{ik}j_{ik}^+A_{ik}^+) + \Pi_{si}S_i^+$$

where

$$V_i^+ = \frac{V_i}{V_{i,0}}, \psi_i^+ = \frac{\psi_i}{\psi_{i,0}}, Q_i^+ = \frac{Q_i}{Q_{i,0}}, j_{ik}^+ = \frac{j_{ik}}{j_{ik,0}}, A_{ik}^+ = \frac{A_{ik}}{A_{ik,0}}, S_i^+ = \frac{S_i}{S_{i,0}}$$

$$\tau_i = \frac{V_{k,0}}{Q_{k,0}} \text{ is residence time of constituent "i"}$$

$$\Pi_{ik} = \frac{j_{ik,0}A_{ik,0}}{Q_{i,0}\psi_{i,0}} \text{ is specific time ratio for transient process between constituents "i" and "k"}$$

$$\Pi_{si} = \frac{S_{i,0}}{Q_{i,0}\psi_{i,0}} \text{ is specific time ratio for the distributed source term within control volume}$$

Each specific time ratio is composed of a specific frequency and residence time constant

$$\Pi_{ik} = \frac{j_{ik,0}A_{ik,0}}{Q_{i,0}\psi_{i,0}} = \left( \frac{j_{ik,0}A_{ik,0}}{V_{i,0}\psi_{i,0}} \right) \left( \frac{V_{i,0}}{Q_{i,0}} \right) = \omega_{ik}^S \tau_i$$



where

$$\omega_{ik}^s = \frac{j_{ik,0} A_{ik,0}}{V_{i,0} \psi_{i,0}} \text{ is specific frequency.}$$

The characteristic time ratio can be expressed as a function of both constituents.

$$\Pi_{ki} = \frac{j_{ki,0} A_{ki,0}}{Q_{k,0} \psi_{k,0}} = \left( \frac{j_{ki,0} A_{ki,0}}{V_{k,0} \psi_{k,0}} \right) \left( \frac{V_{k,0}}{Q_{k,0}} \right) = \omega_{ki}^s \tau_k = \left( \frac{\psi_{i,0} \alpha_{i,0} V \omega_{ik}^s}{\alpha_{k,0} V \psi_{k,0}} \right) \tau_k = \frac{\psi_{i,0} \alpha_{i,0}}{\psi_{k,0} \alpha_{k,0}} \omega_{ik}^s \tau_k$$

where

$$j_{ki,0} A_{ki,0} = j_{ik,0} A_{ik,0} = Q_{i,0} \psi_{i,0} \left( \frac{V_{i,0}}{Q_{i,0}} \right) \omega_{ik}^s = \psi_{i,0} \alpha_{i,0} V \omega_{ik}^s$$

and

$\alpha_{i,0}, \alpha_{k,0}$  are volume fractions of "i" and "k" constituents.

Time ratios represent the total change of a conserved property in the control volume, during the residence time, caused by the relevant transfer process.

If the time ratio is small ( $\Pi \ll 1$ ) only a small quantity of the corresponding property would be transferred in the specified available time. As a consequence the specific process would not be important to the overall transient.

If the time ratio is large ( $\Pi \gg 1$ ) the specific process has a high transfer rate of the conserved property during the residence time period. The larger the time ratio the more important is the transfer process.

Time ratios will be used to establish a hierarchy and ranking for various processes. The characteristic time ratio must be preserved for the prototype and the model ( $\Pi_m = \Pi_p$ ).

The effect of a distortion in the model can be estimated from  $D = (\Pi_m - \Pi_p) / \Pi_p$ .

The characteristics time ratios combine the system and process point of view for each transfer process, and provide a quantitative measure to evaluate the relevance of a process. The characteristics time ratio incorporates the effects of the three scales (the amount of material present in the system, geometry, and time). Two characteristics time ratios are associated with each transfer area and they quantify the effect of the transfer process on the two media separated by the transfer area.

The Top-Down System Scaling Analysis considers the interactions between the constituents and their overall effects on the system. It enhances the efficiency of the scaling methodology by identifying important processes affecting the behavior of the whole system.

The Bottom-Up Scaling Analysis is the fourth element (see Stage 4 in Figure 1.2) of the H2TS methodology. It focuses on the important processes and on the performance of the isolated parts of the system. A detailed scaling analysis of the important processes, derivation and validation of the scaling groups, ensures the prototypicality of the test data. The Bottom-Up Scaling Analysis provides the sufficiency of the scaling methodology.

Scaling analysis will be performed based on the previous experience gained during AP600 and AP1000 licensing. Among the referenced documents, WCAP-14812, Revision 2, and WCAP-14845, Revision 3, are relevant to the AP600 Containment scaling. WCAP-15613 is related to AP1000 Containment licensing. Scaling methodology for primary and secondary loop components in AP600 is presented in WCAP-14727 Revision 2. NUREG/CR-6731 will be used as well as a basis for IRIS primary and secondary loop components scaling analysis inside the Reactor Pressure Vessel.

Scaling for an IRIS integral test must be performed simultaneously for both Reactor Pressure Vessel and Containment components because of the important interactions between them.

## References

Brown W. L., Hochreiter L. E., Loftus M. J., "AP600 Scaling and PIRT Closure Report," WCAP-14727, Revision 2, Pittsburgh, February, 1998

Brown W. L., "AP1000 PIRT and Scaling Assessment," WCAP-15613, Pittsburgh, February, 2001

Chow T. H., editor, *"Time Scale Modeling of Dynamic Networks and Applications to Power Systems,"* Springer Verlag, New York, 1986

Grgic D., Bajs T., Segon V., "IRIS RELAP 5 mod 3.3 Nodalization and Steady State Qualification," FER, September 22, 2002

Loftus M., Spencer D., Woodcock J., "Accident Specification and Phenomena Evaluation for AP600 Passive Containment Cooling System," WCAP-14812, Revision 2, Pittsburgh, April 1998

Mesarovic M. D., Macko D., and Takahara Y., *"Theory of Hierarchical Multilevel Systems,"* Academic Press, New York, 1970

Reyes J. N., Jr., Bassette D. and Rhee G., "Scaling Analysis for the OSU APEX-CE Integral System Test Facility," NUREG/CR-6731, Washington, November 2000

Spencer D. R., Brown W. L., Woodcock J., "Scaling Analysis for AP600 Containment Pressure During Design Basis Accidents," WCAP-14845, Revision 3, Pittsburgh, March 1998

Staudenmeier J., "Draft Regulatory Guide DG-1120 Transient and Accident Analysis Methods," USNRC, June 2002

Zuber, N. "Appendix D: A Hierarchical, Two-Tiered Scaling Analysis," *An Integrated Structure and Scaling Methodology for Severe Accident Technical Issue Resolution*, U. S. Nuclear Regulatory Commission, Washington, D.C. 20555, NUREG/CR-5809, November 1991

[This page is intentionally left blank ]

## 2.0 Stage 1 – System Decomposition

A physically based decomposition establishes a hierarchical architecture for the system.

The process is exemplified in Figure 2.1. The system (S) can be subdivided into subsystem components (SS). Each subsystem can be built of several modules (M). Various constituents (C) (in fact materials) as water, steel, concrete etc., can be inside the modules. Some constituents may be in several phases (P). For example, water could be in the liquid, or gas phase. Each phase could be present in various geometrical configurations (G). For example, liquid phase of water could be in the shape of droplets, liquid films near the vertical walls, ponds/pools and bulk coolant flowing stream. Various fields (F) and corresponding equations (for mass, momentum and energy balance) can be considered for each geometrical configuration. The complexity of the equations depends on the processes acting on the particular geometrical configuration. For example, to calculate the energy balance of the water droplet surrounded by the mixture of air and steam we might take into consideration processes of convection around the droplet surface, evaporation or condensation on the droplet surface, as well as heat conduction and convection inside the droplet volume.

The example in Figure 2.1 shows how a system can be decomposed and the hierarchy of the components established. Using this approach for the all IRIS systems, subsystems and modules (presented in Figure 2.2 and Table 2.1) the results reported in Figure 2.3 are obtained.

SYSTEM (S)	S for example IRIS Engineered Safeguard Features (ESF)									
SUBSYSTEM (SS)	SS <sub>1</sub> for example Pressure Supression System (PSS)								.	SS <sub>K</sub>
MODULES (M)	M <sub>1</sub> for example Pool (PSS_POOL)							M <sub>2</sub>		
CONSTITUENTS (C)	C <sub>1</sub> for example water					..	C <sub>K</sub>			
PHASES (P)	g	l liquid					s			
GEOMETRICAL CONFIGURATIONS (G)		G <sub>1</sub>	G <sub>2</sub> droplets			.	G <sub>K</sub>			
FIELDS (F)			M	MM	Energy					
PROCESSES					P <sub>1</sub> evaporation					
					P <sub>2</sub> convection					
					P <sub>3</sub> conduction					

**Figure 2.1 An Example of the System Decomposition and Hierarchy**



**Figure 2.2 IRIS Subsystems and Modules**

**Table 2.1 IRIS Systems, Subsystems and Modules**

<b>IRIS Systems</b>	<b><u>IRIS Subsystems</u></b>	(a,c)
<b>Integral Reactor Coolant System (RCS)</b>		
<b>Engineered Safeguard Features (ESF)</b>		
<b>Containment Vessel (CV)</b>		(a,c)

Figure 2.3 consists of [ ]<sup>(a,c)</sup> panels. Each panel is for one subsystem, or module. The schematic of the IRIS systems with the marked position of the corresponding subsystem or module is presented above each table. The table specifies the list of constituents (materials) present in the subsystem or module, phases (liquid, vapor or solid), geometrical configurations, field equations and processes to be scaled.

The specified constituents (materials) are all possible materials that might be present in the subsystem or module at any time during the postulated accident. [

] <sup>(a,c)</sup>

The phases of the water (liquid water and steam) might be in various geometrical configurations. For the purpose of scaling, if the configuration is continuous, the presence of the bulk liquid or bulk steam is indicated. On the other extreme, if the configuration is dispersed, the presence of droplets or bubbles is specified.

In reality some intermediate geometrical configurations might exist (like agglomerated bubbles, or gas plugs inside the pipes). [

] <sup>(a,c)</sup>

In the case of solid phase (in most cases either carbon steel or stainless steel) the geometrical configurations are shells, structures or pipes.

Field equations of mass, momentum and energy need to be taken into consideration for the constituents in liquid or gas phases. [

] <sup>(a,c)</sup>

[

] <sup>(a,c)</sup>

At the end of the table (last row) the processes to be scaled are specified for each constituent (material).



(a,c)

**Figure 2.3 IRIS Breakdown and Hierarchy**

[This page is intentionally left blank ]

### 3.0 Stage 2 – Scale Identification

The purpose of the second stage is to provide hierarchy for the volumetric concentrations, area concentrations, residence times and process time scales. The results are presented in the form of panels for each IRIS subsystem/module (see Figure 3.1 - IRIS Scale Identification panels [ (a,c) ).

The volumes of each constituent (material), each phase and each geometrical configuration ( $V_{constituent}, V_{phase}, V_{geometrical\ configuration}$ ) need to be specified.

By knowing the volumetric flow rates  $Q$  for each constituent (material), phase and geometrical configuration the corresponding residence times can be calculated as

$$\tau_{constituent} = V_{constituent} / Q_{constituent}, \quad \tau_{phase} = V_{phase} / Q_{phase} \quad \text{and} \quad \tau_{g.config} = V_{g.config} / Q_{g.config}.$$

An area concentration of the geometrical configuration ( $A_{(g.config.1),(g.config.2)} / V_{g.config.1}$ ) is specified by the area between two geometrical configurations divided by the volume of the corresponding geometrical configuration.

Process times of interest are specific frequencies and specific time ratios, defined below.

The specific frequencies for mass, momentum and energy transfer ( $\omega_{mass}^s, \omega_{momentum}^s, \omega_{energy}^s$ ) can be calculated from mass flux, momentum flux, energy flux and area concentrations between two geometrical configurations. Also, density, velocity and internal energy of the corresponding geometrical configuration need to be known.

The specific time ratios for mass momentum and energy transfer ( $\Pi^{mass}, \Pi^{momentum}, \Pi^{energy}$ ) are defined as the product of the specific frequencies by the residence times.

In most situations it was assumed that dispersed configurations (droplets or bubbles) are surrounded only by the continuous configuration (bulk steam or bulk liquid) and interactions of the dispersed configurations with the solid surfaces are neglected.

[

] (a,c)

In the case of solid phase the release (or accumulation) of the stored energy from (into) the solid bodies is the only process of interest. Since the volumetric flow rate of the solid bodies is equal to zero, the residence time and specific time ratios are not calculated.

[

] (a,c)

More details will be given during the next stage (Stage 3 Top-down scaling), when energy transfer equations for the solid bodies will be presented.

### Figure 3.1 IRIS Scale Identification

(a,c)