



Nuclear

Exelon Generation
4300 Winfield Road
Warrenville, IL 60555

www.exeloncorp.com



An Exelon/British Energy Company

10CFR50, Appendix E

5928-03-20104

May 28, 2003

U. S. Nuclear Regulatory Commission
ATTN: Document Control Desk
Washington, DC 20555-0001

Subject: Peach Bottom Atomic Power Station, Units 2 & 3
Facility Operating License Nos. DPR-44 and DPR-56
NRC Docket Nos. 50-277 and 50-278

Limerick Generating Station, Units 1 & 2
Facility Operating License Nos. NPF-39 and NPF-85
NRC Docket Nos. 50-352 and 50-353

Three Mile Island, Unit 1 (TMI Unit 1)
Facility Operating License No. DPR-50
NRC Docket No. 50-289

EP-MA-114-100, Revision 3, "MAROG Notifications"

Enclosed is a revised Emergency Plan Procedure for Peach Bottom Atomic Power Station (PBAPS), Units 2 and 3; Limerick Generating Station (LGS), Units 1 and 2; and Three Mile Island, (TMI) Unit 1. This procedure is required to be submitted within thirty (30) days of its revision in accordance with 10CFR50, Appendix E, and 10CFR50.4.

Also, enclosed are copies of a computer generated report index identifying the latest revisions of the LGS, PBAPS, and TMI procedures.

If you have any questions or require additional information, please do not hesitate to contact us.

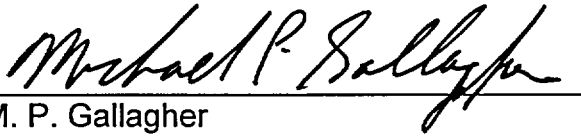
A045

Emergency Plan Procedure

May 28, 2003

Page 2

Very truly yours,

A handwritten signature in black ink, reading "Michael P. Gallagher". The signature is written in a cursive style with a horizontal line underneath it.

M. P. Gallagher

Director - Licensing & Regulatory Affairs

AmerGen Energy Company, LLC

Exelon Generation Company, LLC

Enclosures

cc: H. J. Miller, Administrator, Region I, USNRC (w/ Enclosure)
J. P. Boska, USNRC, Senior Project Manager (w/ Enclosure)
S. P. Wall, USNRC, Senior Project Manager (w/ Enclosure)
T. G. Colburn, USNRC, Senior Project Manager (w/ Enclosure)
A. C. McMurtry, USNRC, Senior Resident Inspector, PBAPS (w/o Enclosure)
A. L. Burritt, USNRC, Senior Resident Inspector, LGS (w/o Enclosure)
C. W. Smith, USNRC, Acting Senior Resident Inspector, TMI-1 (w/o Enclosures)
File No. 03035

ATTACHMENT 1

LIMERICK GENERATING STATION, UNITS 1 & 2 PEACH BOTTOM ATOMIC POWER STATION, UNITS 2 & 3 THREE MILE ISLAND, UNIT 1

**Docket Nos. 50-352
50-353
50-277
50-278
50-289**

**License Nos. NPF-39
NPF-85
DPR-44
DPR-56
DPR-50**

EMERGENCY RESPONSE PROCEDURE

EP-MA-114-100, "MAROG Notifications" - Revision 3

MAROG NOTIFICATIONS

1. PURPOSE

- 1.1 Provide prompt and accurate notification of nuclear station emergencies to local, state and federal agencies.

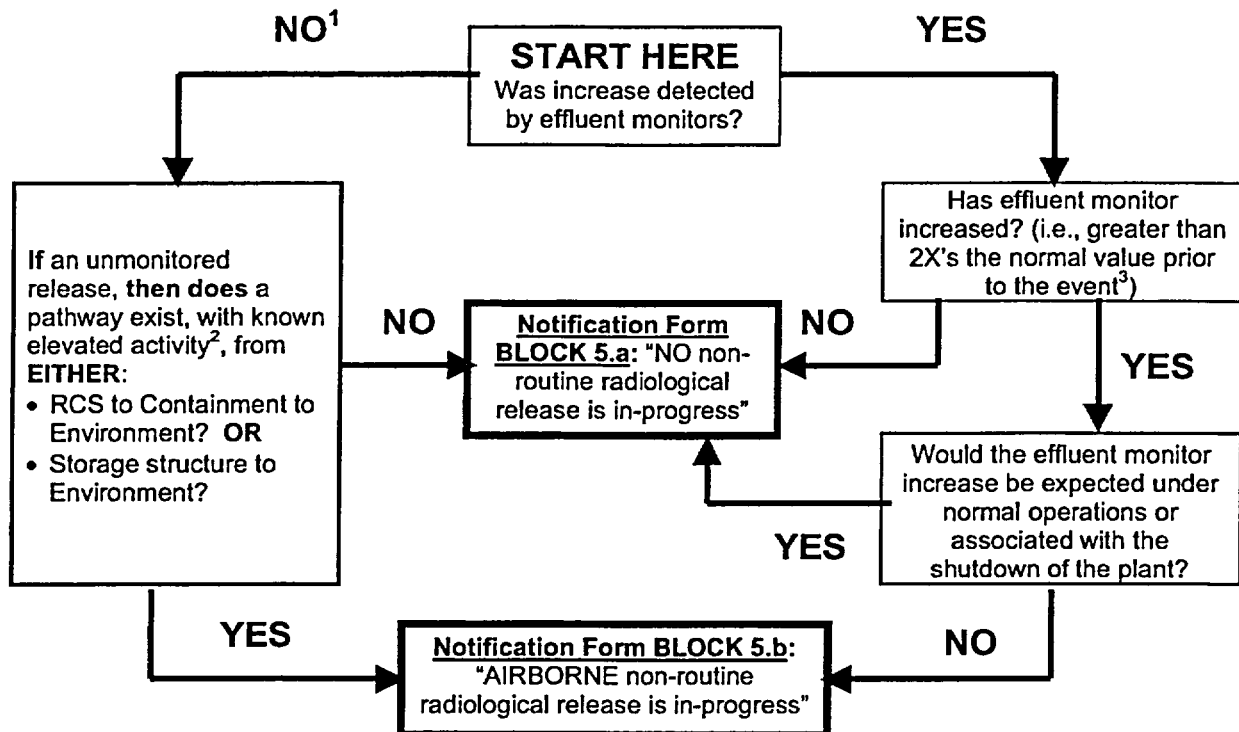
Completing State/Local Notification Form	REFER to Section 4.1
State/Local Notification Form Transmittal	REFER to Section 4.2
Conducting State Radiological Update	REFER to Section 4.3

2. TERMS AND DEFINITIONS

- 2.1 Nuclear Accident Reporting System (NARS) – A telecommunication network used to transmit information to appropriate State and local agencies within fifteen minutes of event declaration.
- 2.2 "Timeliness" – For State/Local notification purposes, this is defined as the completion of Initial Roll Call for all required agencies within 15 minutes of the emergency classification time.
- 2.3 "Accuracy" – For State/Local notification purposes, this is defined as correctly completing the following content blocks on the PA / MD Notifications form:
- Call Status ("This is a Drill" or "Actual Event").
 - Identity of site.
 - Emergency classification status.
 - Date and time of declaration (or entry into Recovery or Termination).
 - EAL number
 - Brief non-technical description of the event
 - Wind direction and speed.
 - Non-Routine Radiological Release Status
 - Utility Protective Action Recommendation (PAR), when a General Emergency is declared, including EVACUATION, and as applicable for PBAPS, potassium iodide (KI) recommendations.
- 2.4 Radiological Release: The movement of radioactive materials, gaseous or liquid, beyond a protected area. The definition requires the assessment of both plant conditions and effluent monitors to fully evaluate the situation.

- 2.5 "Airborne" Non-Routine Release in Progress: Defined as ANY gaseous radioactive release that is a result of, or associated with, the emergency event (not attributed to the normal operation or shutdown of plant systems).

NOTE: The following guidelines may not cover every potential scenario. As such, judgment must be used in final determination, specifically in regards to field monitoring team survey results.



¹ Unmonitored release may include situations where the effluent monitors are inoperable or otherwise bypassed.

² Based on RP / field monitoring team readings outside containment, loss of fission product barriers, etc.

³ The "2 X's value" assumes that monitor is operating at near the monitor's lower limit of detection and accounts for normal variations in background.

3. RESPONSIBILITIES

- 3.1 The **Emergency Director in the Emergency Response Facility (ERF) with Command and Control** shall ensure that all required notifications and internal communications are performed accurately and in a timely manner.
- 3.2 **Designated on-shift personnel** are responsible for transmitting the State/Local notification over the NARS when the Shift Emergency Director is in Command and Control.
- 3.3 The **State/Local Communicator in the TSC** is responsible for transmitting the State/Local notification over the NARS when the Station Emergency Director is in Command and Control.

- 3.4 The ***State/Local Communicator in the EOF*** is responsible for transmitting the State/Local notification over the NARS when the Corporate Emergency Director is in Command and Control.

4. **MAIN BODY**

4.1 **COMPLETING STATE/LOCAL EVENT NOTIFICATION FORM**

- 4.1.1 **Utility Message No.** – **ENTER** a sequential number starting with 1.

4.1.2 **Block 1: Call Status**

1. ***"This is a DRILL"*** – This block should be marked during exercises, drills, training sessions, or annual communications tests
2. ***"This is an ACTUAL EVENT"*** – This block should be marked to indicate a notification is being performed based on actual plant conditions.

- 4.1.3 **Block 2: Affected Station / Communicator Information** – **CHECK** the appropriate affected station.

- Communicator will provide his/her NAME, PHONE NUMBER, and the CURRENT TIME (in 24-hour clock) when the notification is read.

4.1.4 **Block 3: (ALL entries: a, b, c and d)**

1. **Entry 3.a: EMERGENCY CLASSIFICATION** – **CHECK** the block corresponding to the classification entered. (**REFER** to EP-AA-111 for definition of terms and entry conditions.)
2. **Entry 3.b: AFFECTED UNIT(S)** – **CHECK** the block(s) corresponding to the units affected.

Limerick / Peach Bottom

If the event involves multiple units (e.g., site event such as an earthquake, high winds, etc.), then SELECT blocks for both units – LGS: Units 1 & 2 / PBAPS: Units 2 & 3.

3. **Entry 3.c: DECLARED AT** – **ENTER** the TIME (in 24-hour clock) & DATE that the accident condition was declared.

– **REFER** to Attachment 4 for a Military (24-Hour) Time Reference.

NOTE: The time and date listed are specific to the current classification. When a new form is issued for a change to another part of the form, the time in this block still needs to reflect the time and date of the current classification in effect.

4. Entry 3.d: CLASSIFICATION STATUS – CHECK the applicable option:
- A. *"INITIAL DECLARATION"* – entry by Control Room into E-Plan.
 - B. *"ESCALATION"* – Increase in event severity from previous notification. Used after initial event declared.
 - C. *"NO CHANGE"* – Used when indicating a change in PAR or other form information without a corresponding classification change.
 - D. *"REDUCTION"* – Used for the downgrading of Alert classification to an Unusual Event, or entry into the Recovery Phase from a Site Area or General Emergency, or event termination per EP-AA-111.

4.1.5 Block 4: (a and b)

1. Entry 4.a: EMERGENCY ACTION LEVEL (EAL) NO. – **ENTER** the EAL Number corresponding to the Initiating Condition (IC) from the EAL Matrix.

NOTE: Classification level shall indicate the highest classification level for the site (all units). In situations where one unit is affected by unrelated events, classification is the highest level and other conditions should be noted in Block 4.b (BRIEF NON-TECHNICAL DESCRIPTION).

2. Entry 4.b: BRIEF NON-TECHNICAL DESCRIPTION – Provide a simplified explanation for event classification. (**REFER** to Offsite EAL Reference Manual, if necessary.)

- Avoid the use of acronyms, abbreviations, or other terms that would not be recognized by State and local response agencies.

4.1.6 Block 5: NON-ROUTINE RADIOLOGICAL RELEASE STATUS (a, b, c or d)

1. Entry 5.a: "NO..." - Should be marked to indicate that no non-routine release is occurring.
2. Entry 5.b: "AIRBORNE..." - Should only be marked if there is an airborne release in progress per definition in Section 2.5.
3. Entry 5.c: "LIQUID..." - Should only be marked if there is an liquid release in progress.
4. Entry 5.d: "...TERMINATED" - should be marked to indicate that the radioactive release that was "in progress" has ended since the last notification.

4.1.7 Block 6: METEOROLOGY (a and b)

Wind speed and direction is normally obtained from the meteorological tower from the affected station using designated EPDS / PMS / PCC data point(s).

NOTE: 15 minute average data should be used for notification purposes. If unavailable, an instantaneous value may be used as a backup.

LIMERICK GENERATING STATION			PEACH BOTTOM ATOMIC POWER STATION		
<u>Release Pt.</u>	<u>Primary</u>	<u>Backup</u>	<u>Release Pt.</u>	<u>Primary</u>	<u>Backup</u>
North Stack	Tower 1: 175'	Tower 2: 159'	Main Stack	Tower 2: 320'	Tower 2: 75'
South Stack	Tower 1: 175'	Tower 2: 159'	Vent Stack	Tower 2: 75'	Tower 2: 320'
			Torus Vent	River Twr: 33'	Tower 2: 75'

1. Entry 6.a: WIND DIRECTION [FROM] – **ENTER** the direction from which the wind is coming, in degrees.
2. Entry 6.b: WIND SPEED – **ENTER** the Wind Speed in "MILES PER HOUR".

4.1.8 Block 7: UTILITY PROTECTIVE ACTION RECOMMENDATION (a or b)

1. Entry 7.a: NOT APPLICABLE – If event is classified as an Unusual Event, Alert or Site Area Emergency.
2. Entry 7.b: GENERAL EMERGENCY – If event is classified as a General Emergency, **then CHECK** applicable PAR blocks using Attachment 8 (or 9) to EP-AA-111, "PAR Determination Flowchart for LGS / PBAPS (for TMI)".

Peach Bottom

For a General Emergency classification, INCLUDE statement that "The utility recommends that Maryland government officials notify the general public to take potassium iodide (KI) for those sectors in Maryland where evacuation is recommended."

4.1.9 Block 8: CONCLUSION – **ENSURE** option checked is consistent with that selected in Step 4.1.2 (Call Status).4.1.10 (Header) EMERGENCY DIRECTOR APPROVAL – **FORWARD** to the Emergency Director in the facility in command and control for approval signature.

- Control Room: Shift Manager (Shift Emergency Director)
- TSC: Station Emergency Director
- EOF: Corporate Emergency Director

4.2 STATE / LOCAL NOTIFICATION FORM TRANSMITTAL

4.2.1 When provided with the completed notification form, the designated communicator shall:

- a. **ENSURE** that "*Utility Message No.*" has been assigned using a sequential number.
- b. **VERIFY** "*Emergency Director Approval*" signature has been entered on the top of form.
- c. **REVIEW** form for completeness and **IDENTIFY** any missing information (incomplete blocks) to:
 - Control Room → Shift Manager (Shift Emergency Director)
 - TSC → TSC Director
 - EOF → EOF Director

4.2.2 **CONFIRM** dial tone on NARS line.

4.2.3 **DIAL** the appropriate CODE (CAN No.) listed for the affected station at the top of Roll Call Box on Page 2 of the State/Local Event Notification Form (Attachment 1).

1. If the NARS network fails, then **CONTACT** agencies using the alternate telephone numbers denoted next to the roll call listing on the back of the State/Local Event Notification Form.

NOTE: The notification must be initiated to all parties within 15 minutes.

4.2.4 **REPEAT** the following message while allowing for agencies to come on line:

"This is the Exelon Nuclear [Station and Facility originating the call]. Please standby for a notification message."

After approximately 30 seconds, **READ** the following message:

"This is the Exelon Nuclear [Station and Facility originating the call] Please standby to receive a notification message and respond as the roll is called."

4.2.5 **CONDUCT** an initial roll call for the agencies listed on the back of the State/Local Event Notification Form.

1. **RECORD** the time (in 24-hour clock) as each required party responds to the roll call.

– **REFER** to Attachment 4 for a Military (24-Hour) Time Reference.

2. **REPEAT** the roll call for agencies that do not answer.

3. **ENTER** the time (in 24-hour clock) that initial roll call was completed in the box at the bottom of the Roll Call box on Page 2 of the form.
4. **NOTE** any agencies that do not answer the roll, and **NOTIFY** the Shift Manager, TSC Director or EOF Director as applicable, so that alternate means of notification can be initiated within 15 minutes of event declaration, using commercial phone, or dedicated radio link (TMI – PEMARS).

4.2.6 **READ** Blocks one at a time from the approved notification form.

1. **USE** the Phonetic Alphabet for clarity. (**REFER** to Attachment 3 for guidance)
2. **SPEAK** clearly and slowly.

4.2.7 **REPEAT** the roll call for each agency listed on the back of the Event Notification Form, and **CHECK** them off as they respond to the roll call.

1. **ASK** if there are any questions about the information provided and **PROVIDE** clarification as needed.
2. **CLARIFY** message data questions at this time.
3. **RECORD** any unanswered questions or inquiries on an Information Request / Message Form (EP-AA-112, Attachment 7) and **FORWARD** to one of the following, as applicable, for resolution:
 - Control Room → Shift Manager (Shift Emergency Director)
 - TSC → TSC Director
 - EOF → EOF Director

4.2.8 **READ** the following, and **CHECK** the designated box at the bottom of Page 1 of form:

“This concludes the notification message.”

4.2.9 If any agency did NOT answer the final roll call, **then CONTACT** that agency via commercial telephone line using the telephone numbers listed.

TMI

If party CANNOT be contacted via commercial telephone, then USE Pennsylvania Emergency Management Agency Radio System (PEMARS). REFER to Attachment 5 for Telephone Line Failure Alternatives.

Peach Bottom / TMI

Follow up notifications are NOT required to be performed within 15 minutes of event classification. Therefore, these notifications should not be initiated until required notifications to the State(s) and risk counties are completed.

4.2.10 **PERFORM** follow-up notifications to organizations / agencies listed at the bottom of the back page of the notification form.

1. **RECORD** the Date and Time (in 24-hour clock) that agency was contacted on the back of form in space provided.
2. **READ** Blocks one at a time from the approved notification form using the guidelines outlined above.

4.2.11 **FAX** completed copies of both pages of notification form to the Control Room, TSC and EOF, as applicable.

4.2.12 **INFORM** appropriate facility director when notification is completed to required contacts:

Control Room	→	Shift Manager
TSC	→	TSC Director
EOF	→	EOF Director

Section 4.3: EOF

State Radiological Updates are performed only by the EOF following the transfer of Command and Control responsibilities for PAR decision-making and off-site notifications.

Notification performed using State / Local Notification Form (Attachment 1) will count towards Drill and Exercise Performance (DEP) credit. Purpose of State Radiological Update is to contact Senior State Representatives to discuss basis for PAR within 15 minutes of PAR decision.

4.3 CONDUCTING STATE RADIOLOGICAL UPDATES

4.3.1 Concurrent with the completion of the State / Local Notification Form (Attachment 1) for a General Emergency or subsequent change in PAR, the Corporate Emergency Director shall **PERFORM** the following:

1. **DIRECT** RPM to complete the State Radiological Update Form (Attachment 2).
2. **VERIFY** that the PAR, basis and meteorology is consistent with that recorded on State / Local Notification Form.

3. **INSTRUCT** the EOF Director to establish the telephone link with Pennsylvania and Maryland Senior State Officials, as applicable.
 4. **REVIEW / APPROVE** the completed State Radiological Update Form.
 5. **DIRECT** that 6 copies (minimum) be made for distribution.
 6. **MAKE** PA announcement regarding the meeting time in ED Conference Room and **IDENTIFY** required attendees (State representatives and NRC Site Team Leader / Director of Site Operations).
 7. **If time permits, then INFORM** NRC Site Team Leader prior to meeting.
- 4.3.2 **DELIVER** update on PAR to State Representatives or release status change within 15 minutes of PAR decision.
1. **OBTAIN** a repeat back from Pennsylvania Senior State Official and State of Maryland Representative (if present for PBAPS).
 2. **PROVIDE** additional details.
 3. **DOCUMENT** on Page 2 of Update form
- 4.3.3 After meeting, **INFORM** the Station Emergency Director (TSC) and **DESCRIBE** any State and/or NRC issues.
5. **DOCUMENTATION - NONE**
6. **REFERENCES**
- 6.1 Commitments – None
7. **ATTACHMENTS**
- 7.1 Attachment 1, State/Local Event Notification Form
 - 7.2 Attachment 2, State Radiological Update Form
 - 7.3 Attachment 3, Phonetic Alphabet
 - 7.4 Attachment 4, Military (24-Hour) Time Reference
 - 7.5 Attachment 5, Telephone Line Failure Alternatives **[TMI]**

ATTACHMENT 1 STATE/LOCAL EVENT NOTIFICATION FORM Page 1 of 2

UTILITY MESSAGE NO. _____

EMERGENCY DIRECTOR APPROVAL: _____

PERFORM INITIAL ROLL CALL PRIOR TO TRANSMITTING – Refer to Page 2 of Form

<p>1. CALL STATUS is:</p> <p><input type="checkbox"/> This is a DRILL.</p> <p><input type="checkbox"/> This is an ACTUAL EVENT.</p>	<p>2. This is * _____ at <input type="checkbox"/> LIMERICK / <input type="checkbox"/> PEACH BOTTOM / <input type="checkbox"/> TMI</p> <p>My phone number is * _____. The current time is * _____.</p> <p><i>[* Completed by Communicator at time notification is performed: 24-hour clock.]</i></p>																
<p>3.a EMERGENCY CLASSIFICATION is a/an:</p> <p><input type="checkbox"/> UNUSUAL EVENT</p> <p><input type="checkbox"/> ALERT</p> <p><input type="checkbox"/> SITE AREA EMERGENCY</p> <p><input type="checkbox"/> GENERAL EMERGENCY</p> <p><input type="checkbox"/> TERMINATION</p> <p><input type="checkbox"/> RECOVERY</p>	<p>b. AFFECTED UNIT(S) is/are:</p> <p><input type="checkbox"/> ONE <input type="checkbox"/> TWO <input type="checkbox"/> THREE</p> <p>c. DECLARED AT:</p> <p>TIME: _____ (24-hr clock)</p> <p>DATE: ____/____/____</p>																
<p>d. THIS REPRESENTS A/AN:</p> <p><input type="checkbox"/> INITIAL DECLARATION</p> <p><input type="checkbox"/> ESCALATION</p> <p><input type="checkbox"/> NO CHANGE</p> <p><input type="checkbox"/> REDUCTION</p> <p>- IN CLASSIFICATION STATUS</p>																	
<p>4. a. EMERGENCY ACTION LEVEL (EAL) NO. is: _____</p> <p>b. A BRIEF NON-TECHNICAL DESCRIPTION OF THE EVENT is as follows:</p> 																	
<p>5. NON-ROUTINE RADIOLOGICAL RELEASE STATUS is:</p> <p><input type="checkbox"/> a. NO non-routine radiological release in-progress</p> <p><input type="checkbox"/> b. AIRBORNE non-routine radiological release in-progress</p> <p><input type="checkbox"/> c. LIQUID non-routine radiological release in-progress</p> <p><input type="checkbox"/> d. Non-routine radiological release TERMINATED</p>	<p>6. METEOROLOGY is:</p> <p>a. WIND DIRECTION is FROM: _____ (degrees)</p> <p>b. WIND SPEED is: _____ (miles per hour)</p>																
<p>7. UTILITY PROTECTIVE ACTION RECOMMENDATION: (a or b) – No action should be taken until government officials have been notified: by State:</p> <p><input type="checkbox"/> a. NOT APPLICABLE (<i>Unusual Event, Alert, Site Area Emergency or Termination/Recovery only</i>)</p> <p><i>(Complete the following for a General Emergency only for the applicable station):</i></p> <p><input type="checkbox"/> b. The Protective Action Recommendation (PAR) from the utility is:</p>																	
LGS/PBAPS	<p><input type="checkbox"/> EVACUATE 360 DEGREES FROM 0 MILES (SITE BOUNDARY) TO _____ MILES</p> <p>AND</p> <p><input type="checkbox"/> EVACUATE THE FOLLOWING SECTORS FROM _____ MILES TO _____ MILES:</p> <table style="width: 100%;"> <tr> <td><input type="checkbox"/> N</td> <td><input type="checkbox"/> E</td> <td><input type="checkbox"/> S</td> <td><input type="checkbox"/> W</td> </tr> <tr> <td><input type="checkbox"/> NNE</td> <td><input type="checkbox"/> ESE</td> <td><input type="checkbox"/> SSW</td> <td><input type="checkbox"/> WNW</td> </tr> <tr> <td><input type="checkbox"/> NE</td> <td><input type="checkbox"/> SE</td> <td><input type="checkbox"/> SW</td> <td><input type="checkbox"/> NW</td> </tr> <tr> <td><input type="checkbox"/> ENE</td> <td><input type="checkbox"/> SSE</td> <td><input type="checkbox"/> WSW</td> <td><input type="checkbox"/> NNW</td> </tr> </table> <p>(PBAPS only) AND</p> <p><input type="checkbox"/> The utility recommends that Maryland government officials notify the general public to take potassium iodide (KI) for those sectors in Maryland where evacuation is recommended.</p>	<input type="checkbox"/> N	<input type="checkbox"/> E	<input type="checkbox"/> S	<input type="checkbox"/> W	<input type="checkbox"/> NNE	<input type="checkbox"/> ESE	<input type="checkbox"/> SSW	<input type="checkbox"/> WNW	<input type="checkbox"/> NE	<input type="checkbox"/> SE	<input type="checkbox"/> SW	<input type="checkbox"/> NW	<input type="checkbox"/> ENE	<input type="checkbox"/> SSE	<input type="checkbox"/> WSW	<input type="checkbox"/> NNW
<input type="checkbox"/> N	<input type="checkbox"/> E	<input type="checkbox"/> S	<input type="checkbox"/> W														
<input type="checkbox"/> NNE	<input type="checkbox"/> ESE	<input type="checkbox"/> SSW	<input type="checkbox"/> WNW														
<input type="checkbox"/> NE	<input type="checkbox"/> SE	<input type="checkbox"/> SW	<input type="checkbox"/> NW														
<input type="checkbox"/> ENE	<input type="checkbox"/> SSE	<input type="checkbox"/> WSW	<input type="checkbox"/> NNW														
TMI	<p><input type="checkbox"/> EVACUATE 360 DEGREES FROM 0 MILES (SITE BOUNDARY) TO _____ MILES</p>																

8. **CONCLUSION:** ☐ This is a DRILL. ☐ This is an ACTUAL EVENT.
- ☐ ASK if there are any questions regarding message or repeat backs needed
- ☐ PERFORM FINAL ROLL CALL UPON COMPLETION – Refer to Page 2 of Form
- ☐ READ "This concludes the notification message"
- ☐ FAX completed copies of both form pages to the Control Room, TSC and EOF, as applicable.
- ☐ PROVIDE form to the Shift Manager, TSC Director or EOF Director when notification is completed to required contacts.

ATTACHMENT 1
STATE/LOCAL EVENT NOTIFICATION FORM
Page 2 of 2

EP-MA-114-100
Revision 3
Page 11 of 16

PEACH BOTTOM

CAN 833

Initial Roll Call

(Time Contacted: 24-hour clock)

Final Roll Call

(v)

_____ **York County** ☐
Ext. 219 or 9-1-717-854-5571

_____ **Pennsylvania EMA** ☐
Ext. 216 or 9-1-800-424-7362 /
9-1-717-651-2001

_____ **Harford County** ☐
Ext. 214 or 9-1-410-638-3400 /
9-1-410-638-4900

_____ **Cecil County** ☐
Ext. 234 or 9-1-410-398-2222 / - 3815
or 9-1-410-996-5350

_____ **Maryland EMA** ☐
Ext. 205 or 9-1-410-517-3600

_____ **Lancaster County** ☐
Ext. 217 or 9-1-800-808-5236 /
9-1-717-664-1190

_____ **Chester County** ☐
Ext. 218 or 9-1-610-344-5100

Initial Roll Call Completed at: _____

FOLLOW-UP NOTIFICATIONS *
(PEACH BOTTOM ONLY)

[] **Maryland Dept. of the Environment**
Emergency ext. 235 or 292
9-1-866-633-4686

Contacted at: _____ (time: 24-hour clock)

[] **PA State Police, York Barracks**
Ext. 284 or 9-1-717-428-1011

Contacted at: _____ (time: 24-hour clock)

** NOT required within 15 minutes of classification*

LIMERICK

CAN 841

Initial Roll Call

(Time Contacted: 24-hour clock)

Final Roll Call

(v)

_____ **Montgomery County** ☐
Ext. 117 or 9-1-610-631-6531

_____ **Chester County** ☐
Ext. 118 or 9-1-610-344-5100

_____ **Berks County** ☐
Ext. 119 or 9-1-610-374-4800
or Ext. 115

_____ **Pennsylvania EMA** ☐
Ext. 116 or 9-1-800-424-7362 or
9-1-717-651-2001 / -2002 / -2003

Initial Roll Call Completed at: _____

TMI: CAN 44

Dialing Instructions

"Notification Line": Dial "44" for all-call. If necessary, dial 3-digit extension #'s to notify individual agencies

Commercial # From TMI: Dial "9" and the #

Commercial # From EOF: Dial "9-1-717" and the #

Toll-Free "800" # From TMI or EOF: Dial the #'s exactly as they appear below

Initial Roll Call

(Time Contacted: 24-hour clock)

Final Roll Call

(v)

_____ **PEMA** ☐
Ext. 315 or 9-1-800-424-7362 or
9-651-2001

_____ **Cumberland County** ☐
Ext. 319 or 9-238-9676, 9-243-4121 or
9-532-8878

_____ **Lebanon County** ☐
Ext. 321 or 9-272-2025 / -7621 / -2054

_____ **Lancaster County** ☐
Ext. 318 or 9-664-1190 / -1200

_____ **York County** ☐
Ext. 317 or 9-854-5571, 9-840-7555 or
9-1-800-427-8347

_____ **Dauphin County** ☐
Ext. 320 or 9-911 or 9-558-6900

Initial Roll Call Completed at: _____

FOLLOW-UP NOTIFICATIONS * (TMI)

[] **York Haven Power Station**
9-848-7277 or 9-266-3654

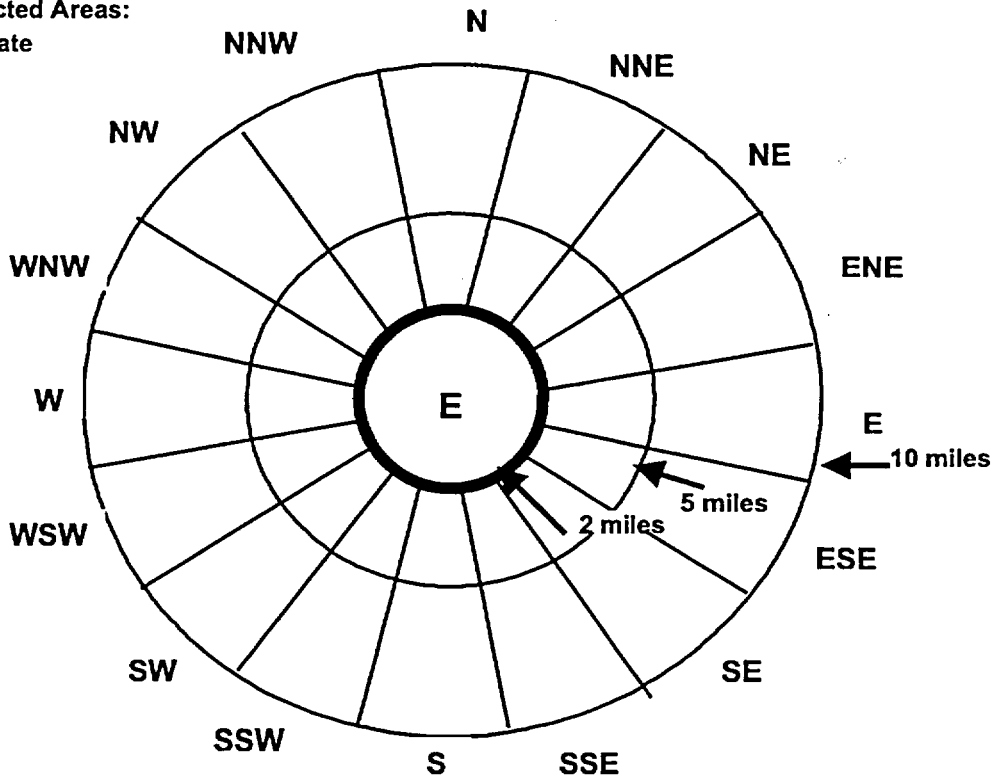
Contacted at: _____ (time: 24-hour clock)

ATTACHMENT 2
STATE RADIOLOGICAL UPDATE FORM
Page 1 of 2

Station: <input type="checkbox"/> LIMERICK / <input type="checkbox"/> PEACH BOTTOM / <input type="checkbox"/> TMI PAR Based On: <input type="checkbox"/> Plant -based PAR (EP-AA-111, Alt. 8 or 9) <input type="checkbox"/> General Emergency classification <input type="checkbox"/> GE with a LOSS of ALL 3 Fission Product Barriers <input type="checkbox"/> Dose Projection (DAPAR) at _____, indicates: SB: _____ / 2 Miles: _____ / 5 Miles: _____ / 10 Miles: _____		PAR Decision at: Date: ____/____/____ Time: _____ (24-hr. clock) Meteorological Data: Wind Direction (FROM): _____ degrees Wind Speed: _____ mph	
Utility Recommended Actions:			
LGS / PBAPS	<input type="checkbox"/> EVACUATE 360 DEGREES FROM 0 MILES (SITE BOUNDARY) TO _____ MILES		
	<input type="checkbox"/> EVACUATE THE FOLLOWING SECTORS FROM _____ MILES TO _____ MILES:		
	<input type="checkbox"/> N <input type="checkbox"/> NNE <input type="checkbox"/> NE <input type="checkbox"/> ENE	<input type="checkbox"/> E <input type="checkbox"/> ESE <input type="checkbox"/> SE <input type="checkbox"/> SSE	<input type="checkbox"/> S <input type="checkbox"/> SSW <input type="checkbox"/> SW <input type="checkbox"/> WSW
	<input type="checkbox"/> W <input type="checkbox"/> WNW <input type="checkbox"/> NW <input type="checkbox"/> NNW	(PBAPS Event only) AND <input type="checkbox"/> The utility recommends that Maryland government officials notify the general public to take potassium iodide (KI) in those sectors in Maryland where evacuation is recommended	
TMI	EVACUATE 360 DEGREES FROM 0 MILES (SITE BOUNDARY) TO _____ MILES		

NOTE: Form is used for discussions with Senior State Officials within 15 minutes of PAR decision. Actual 15-minute notification for DEP purposes is performed using State / Local Notification Form (EP-MA-114-100, Attachment 1).

Mark Affected Areas:
E = Evacuate



Corporate Emergency Director Approval: _____

ATTACHMENT 2
STATE RADIOLOGICAL UPDATE
FORM

Page 2 of 2

PEACH BOTTOM
ROLL CALL

Time Contacted (24-hr clock)

_____ **Pennsylvania Senior
State Official**

Ext. 216 or 9-651-2001 or
9-1-800-424-7362

_____ **Maryland MDE Senior
State Official***

Ext. 235 / 292 or 9-1-866-633-4686

LIMERICK or TMI
ROLL CALL

"Notification Line" from the EOF or Limerick: Dial
the 3-digit #

Commercial # From TMI: Dial "9" and the #

Commercial # From EOF: Dial "9-1-717" and the #

Toll-Free "800" # From TMI or EOF: Dial the # exactly
as it appears below

Time Contacted (24-hr clock)

_____ **Pennsylvania Senior State
Official**

Ext. 116 or 9-1-717-651-2001 or
9-1-800-424-7362 (Limerick)

Ext. 315 or 9-651-2001 or
9-1-800-424-7362 (TMI)

* INITIATE CALL ONLY IF THE SENIOR STATE OFFICIAL IS NOT PRESENT IN EOF.

ATTACHMENT 3
PHONETIC ALPHABET
Page 1 of 1

NOTE: Alternate tables may be used based on station procedures and policies.

A	ALPHA	N	NOVEMBER
B	BRAVO	O	OSCAR
C	CHARLIE	P	PAPA
D	DELTA	Q	QUEBEC
E	ECHO	R	ROMEO
F	FOXTROT	S	SIERRA
G	GOLF	T	TANGO
H	HOTEL	U	UNIFORM
I	INDIA	V	VICTOR
J	JULIET	W	WHISKEY
K	KILO	X	X-RAY
L	LIMA	Y	YANKEE
M	MIKE	Z	ZULU

ATTACHMENT 4
MILITARY (24-HOUR) TIME REFERENCE
Page 1 of 1

<u>AM</u>	<u>24-hr time</u>	<u>PM</u>	<u>24-hr time</u>
Midnight	0000	Noon	1200
1:00	0100	1:00	1300
2:00	0200	2:00	1400
3:00	0300	3:00	1500
4:00	0400	4:00	1600
5:00	0500	5:00	1700
6:00	0600	6:00	1800
7:00	0700	7:00	1900
8:00	0800	8:00	2000
9:00	0900	9:00	2100
10:00	1000	10:00	2200
11:00	1100	11:00	2300

ATTACHMENT 5
TELEPHONE LINE FAILURE ALTERNATIVES [TMI]
Page 1 of 1

A. Meridian Telephone Failure

1. **USE** available telephones with a "944" prefix (e.g., EP Pager Call Out Phone).

NOTE: These telephones are connected directly to the Middletown Central Office and are independent of the Meridian System.

B. Middletown Switching System (Central Office) Failure

NOTE: All TMI local telephones and dedicated EP lines to offsite facilities require the Middletown Central Office to be functional.

1. **BYPASS** the Middletown Central Office via the GPU fiber optics system, using any telephone in the Shift Manager's Office and Control Room, by dialing 2911-9-1-Area Code (if other than a 610) and telephone number.

C. Harrisburg Central Office Failure

NOTE: As the paging company utilizes the Harrisburg Central Office, group and individual pager service may **NOT** be available.

1. **DIAL** local calls to telephone numbers with 944, 948 and 367 prefixes in the normal manner.
2. With the exception of Harrisburg exchanges, **COMPLETE** all other calls using the GPU fiber optics system per Section B.

ATTACHMENT 2

LIMERICK GENERATING STATION, UNITS 1 & 2 PEACH BOTTOM ATOMIC POWER STATION, UNITS 2 & 3 THREE MILE ISLAND, UNIT 1

**Docket Nos. 50-352
50-353
50-277
50-278
50-289**

**License Nos. NPF-39
NPF-85
DPR-44
DPR-56
DPR-50**

EMERGENCY RESPONSE PROCEDURES

REPORT INDEXES

PROCEDURE INDEX REPORT:

FAC	DOC TYPE	PROC TYPE	PROCEDURE NUMBER	CURR REV NBR	TITLE	EFFECTIVE DATE	RESP GROUP	SYSTEM NBR
LG	PROC	EP	EP-AA-1101	0001	EP FUNDAMENTALS	12/20/02		
LG	PROC	EP	EP-AA-1102	0000	ERO FUNDAMENTALS	12/20/02		
LG	PROC	EP	EP-AA-110	0004	ASSESSMENT OF EMERGENCIES	02/20/03		
LG	PROC	EP	EP-AA-110-301	0000	CORE DAMAGE ASSESSMENT (BWR)	08/30/02		
LG	PROC	EP	EP-AA-110-302	0001	CORE DAMAGE ASSESSMENT (PWR)	12/03/02		
					****NO HARDCOPY DIST AT LGS SEE P4****			
LG	PROC	EP	EP-AA-111	0005	EMERGENCY CLASSIFICATION AND PROTECTIVE ACTION RECOMMENDATIONS	02/20/03		
LG	PROC	EP	EP-AA-112	0007	EMERGENCY RESPONSE ORGANIZATION (ERO)/EMERGENCY RESPONSE FACILITY (ERF) ACTIVATION AND OPERATION	02/20/03		
LG	PROC	EP	EP-AA-112-100	0005	CONTROL ROOM OPERATIONS	02/20/03		
LG	PROC	EP	EP-AA-112-200	0004	TSC ACTIVATION AND OPERATION	02/20/03		
LG	PROC	EP	EP-AA-112-201	0001	TSC COMMAND AND CONTROL	02/20/03		
LG	PROC	EP	EP-AA-112-202	0001	TSC FACILITY SUPPORT GROUP	02/20/03		
LG	PROC	EP	EP-AA-112-203	0001	TSC OPERATION GROUP	02/20/03		
LG	PROC	EP	EP-AA-112-204	0001	TSC TECHNICAL SUPPORT GROUP	02/20/03		
LG	PROC	EP	EP-AA-112-205	0001	TSC MAINTENANCE GROUP	02/20/03		
LG	PROC	EP	EP-AA-112-206	0001	TSC RADIATION PROTECTION/CHEMISTRY GROUP	02/20/03		
LG	PROC	EP	EP-AA-112-300	0004	OPERATIONS SUPPORT CENTER ACTIVATION AND OPERATION	02/20/03		
LG	PROC	EP	EP-AA-112-400	0004	EMERGENCY OPERATIONS FACILITY ACTIVATION AND OPERATION	02/20/03		
LG	PROC	EP	EP-AA-112-401	0001	NUCLEAR DUTY OFFICER (NDO)	02/20/03		
LG	PROC	EP	EP-AA-112-402	0001	EOF COMMAND AND CONTROL	02/20/03		
LG	PROC	EP	EP-AA-112-403	0001	EOF LOGISTICS SUPPORT GROUP	02/20/03		
LG	PROC	EP	EP-AA-112-404	0001	EOF TECHNICAL SUPPORT GROUP	02/20/03		
LG	PROC	EP	EP-AA-112-405	0001	EOF PROTECTIVE MEASURES GROUP	02/20/03		
LG	PROC	EP	EP-AA-112-500	0005	EMERGENCY ENVIRONMENTAL MONITORING	02/20/03		
LG	PROC	EP	EP-AA-112-600	0005	JOINT PUBLIC INFORMATION CENTER (JPIC) ACTIVATION	02/20/03		
LG	PROC	EP	EP-AA-112-601	0001	EMERGENCY NEWS CENTER (ENC) OPERATIONS	02/20/03		
LG	PROC	EP	EP-AA-112-602	0001	JPIC ACTIVATION AND OPERATION	02/20/03		
LG	PROC	EP	EP-AA-113	0004	PERSONNEL PROTECTIVE ACTIONS	08/30/02		
LG	PROC	EP	EP-AA-114	0004	NOTIFICATIONS	02/20/03		
LG	PROC	EP	EP-AA-115	0001	RECOVERY FROM A CLASSIFIED EVENT	08/30/02		
LG	PROC	EP	EP-AA-120	0003	EMERGENCY PLAN ADMINISTRATION	12/20/02		
LG	PROC	EP	EP-AA-120-1001	0002	10 CFR 50.54(Q) CHANGE EVALUATION	10/09/02		
LG	PROC	EP	EP-AA-120-1002	0000	STORM/EVENT RESTORATION	10/09/02		
LG	PROC	EP	EP-AA-121	0003	EMERGENCY RESPONSE FACILITIES AND EQUIPMENT READINESS	12/20/02		
LG	PROC	EP	EP-AA-121-1001	0002	AUTOMATED CALL-OUT SYSTEM MAINTENANCE	12/20/02		
LG	PROC	EP	EP-AA-122	0003	DRILLS AND EXERCISES	12/20/02		
LG	PROC	EP	EP-AA-122-1001	0002	DRILL DEVELOPMENT, CONDUCT AND EVALUATION	12/20/02		
LG	PROC	EP	EP-AA-122-1002	0002	EXERCISE DEVELOPMENT, CONDUCT AND EVALUATION	12/20/02		
LG	PROC	EP	EP-AA-122-1003	0002	SCHEDULING OF DRILLS AND EXERCISES	12/20/02		
LG	PROC	EP	EP-AA-122-1004	0001	DEMONSTRATION CRITERIA	10/09/02		
LG	PROC	EP	EP-AA-123	0002	COMPUTER PROGRAMS	11/05/02		
LG	PROC	EP	EP-AA-124	0004	INVENTORIES AND SURVEILLANCES	12/20/02		
LG	PROC	EP	EP-AA-125	0002	EMERGENCY PREPAREDNESS SELF EVALUATION PROCESS	12/20/02		
LG	PROC	EP	EP-AA-125-1001	0002	EP PERFORMANCE INDICATOR GUIDANCE	12/20/02		
LG	PROC	EP	EP-AA-125-1002	0002	ERO PERFORMANCE - PERFORMANCE INDICATORS GUIDANCE	12/20/02		
LG	PROC	EP	EP-AA-125-1003	0002	ERO READINESS - PERFORMANCE INDICATORS GUIDANCE	12/20/02		
LG	PROC	EP	EP-AA-125-1004	0002	EMERGENCY RESPONSE FACILITIES & EQUIPMENT PERFORMANCE INDICATORS GUIDANCE	12/20/02		
LG	PROC	EP	EP-AA-125-1005	0000	PROBLEM IDENTIFICATION & RESOLUTION PERFORMANCE INDICATOR	12/20/02		

PROCEDURE INDEX REPORT:

FAC	DOC TYPE	PROC TYPE	PROCEDURE NUMBER	CURR REV NBR	TITLE	EFFECTIVE DATE	RESP GROUP	SYSTEM NBR
LG	PROC	EP	EP-AA-125-1005	0000	GUIDANCE	12/20/02		
LG	PROC	EP	EP-MA-110-100	0001	ERO COMPUTER APPLICATIONS	02/20/03		
LG	PROC	EP	EP-MA-110-200	0002	DOSE ASSESSMENT	02/20/03		
LG	PROC	EP	EP-MA-112-406	0001	MAROG OFFSITE LIAISONS	02/20/03		
LG	PROC	EP	EP-MA-113-100	0001	ASSEMBLY AND SITE EVACUATION	02/20/03		
LG	PROC	EP	EP-MA-114-100	0003	MAROG NOTIFICATIONS	05/08/03		
LG	PROC	EP	EP-MA-121-1002	0000	ALERT NOTIFICATION SYSTEM (ANS) DESCRIPTION, TESTING, MAINTENANCE AND PERFORMANCE TRENDING PROGRAM	12/20/02		
LG	PROC	EP	EP-MA-121-1004	0000	EMERGENCY PREPAREDNESS ALERT NOTIFICATION SYSTEM (ANS) CONTROL OF EQUIPMENT & OUTAGES	12/20/02		
LG	PROC	EP	EP-MA-122	0000	EXERCISES AND DRILLS	12/20/02		
LG	PROC	EP	EP-MA-122-1001	0002	SUPERCEDED BY EP-AA-122 DRILL DEVELOPMENT, CONDUCT AND EVALUATION	10/09/02		
LG	PROC	EP	EP-MA-122-1002	0002	SUPERCEDED BY EP-AA-122-1001 EXERCISE DEVELOPMENT, CONDUCT AND EVALUATION	10/09/02		
LG	PROC	EP	EP-MA-122-1003	0000	SUPERCEDED BY EP-AA-122-1002 SCHEDULING OF DRILLS AND EXERCISES	10/09/02		
LG	PROC	EP	EP-MA-122-1004	0000	SUPERCEDED BY EP-AA-122-1003 DEMONSTRATION CRITERIA	10/09/02		
LG	PROC	EP	EP-MA-124-1001	0001	SUPERCEDED BY EP-AA-122-1004 FACILITY INVENTORIES AND EQUIPMENT TESTS	02/20/03		
LG	PROC	EP	EP-MA-125-1003	0001	COLLECTION AND EVALUATION OF DATA FOR INDICATOR R.EP.02, "EMERGENCY RESPONSE ORGANIZATION PARTICIPATION"	12/20/02		
LG	PROC	EP	EP-100	0003	SUPERCEDED BY EP-AA-125-1003 CANCELLED 4/03/92 (SUPERCEDED BY ERP-200)			
LG	PROC	EP	EP-100-1 APP.	0003	CANCELLED 04/03/92 (SUPERCEDED BY ERP-200 APP.1)			
LG	PROC	EP	EP-101	0013	CANCELLED 04/03/92 (SUPERCEDED BY ERP-101)			
LG	PROC	EP	EP-102	0015	CANCELLED INCORPORATED INTO EP100 & EP112		LWE	
LG	PROC	EP	EP-102 APP.1	0010	CANCELLED INCORPORATED INTO EP100 & EP112		LWE	
LG	PROC	EP	EP-103	0018	CANCELLED INCORPORATED INTO EP100 & EP112		LWE	
LG	PROC	EP	EP-103 APP.1	0009	CANCELLED INCORPORATED INTO EP100 & EP112		LWE	
LG	PROC	EP	EP-104	0017	CANCELLED INCORPORATED INTO EP100 & EP112		LWE	
LG	PROC	EP	EP-104 APP.1	0009	CANCELLED INCORPORATED INTO EP100 & EP112		LWE	
LG	PROC	EP	EP-105	0017	CANCELLED INCORPORATED INTO EP100 & EP112		LWE	
LG	PROC	EP	EP-105 APP.1	0009	CANCELLED INCORPORATED INTO EP100 & EP112		LWE	
LG	PROC	EP	EP-106	0009	CANCELLED 04/03/92 (SUPERCEDED BY ERP-106)		LWE	
LG	PROC	EP	EP-110	0015	CANCELLED 04/03/92			
LG	PROC	EP	EP-112	0006	CANCELLED 04/03/92 (SUPERCEDED BY ERP-110)			
LG	PROC	EP	EP-120	0009	CANCELLED 04/03/92 (SUPERCEDED BY ERP-C-1200)			
LG	PROC	EP	EP-201	0012	CANCELLED (4/3/92) INCORPORATED INTO ERP-800			
LG	PROC	EP	EP-202	0012	CANCELLED 04/03/92 (SUPERCEDED BY ERP-230)			
LG	PROC	EP	EP-203	0012	CANCELLED 04/03/92 (SUPERCEDED BY ERP-C-1200)			
LG	PROC	EP	EP-204	0001	CANCELLED (08/20/90)			
LG	PROC	EP	EP-208	0015	CANCELLED 04/03/92 (SUPERCEDED BY ERP-500)		LWE	
LG	PROC	EP	EP-210	0016	CANCELLED (4/3/92) INCORPORATED INTO ERP-300			
LG	PROC	EP	EP-211	0009	CANCELLED (4/3/92) INCORPORATED INTO ERP-340			
LG	PROC	EP	EP-220	0000	CANCELLED			
LG	PROC	EP	EP-221	0000	CANCELLED		LWE	
LG	PROC	EP	EP-222	0000	CANCELLED		LWE	
LG	PROC	EP	EP-225	0003	CANCELLED 04/03/92 (SUPERCEDED BY ERP-700)		LWE	

PROCEDURE INDEX REPORT:

FAC	DOC TYPE	PROC TYPE	PROCEDURE NUMBER	CURR REV NBR	TITLE	EFFECTIVE DATE	RESP GROUP	SYSTEM NBR
LG	PROC	EP	EP-230	0015	CANCELLED 04/03/92 (SUPERCEDED BY ERP-400)			
LG	PROC	EP	EP-231	0019	CANCELLED (3/15/91)			
LG	PROC	EP	EP-232	0000	CANCELLED			LWE
LG	PROC	EP	EP-233	0010	CANCELLED (3/22/91)			
LG	PROC	EP	EP-234	0010	CANCELLED (3/22/91)			
LG	PROC	EP	EP-235	0009	CANCELLED (3/15/91)			
LG	PROC	EP	EP-236	0007	CANCELLED (3/15/91)			
LG	PROC	EP	EP-237	0013	CANCELLED (3/13/91)			
LG	PROC	EP	EP-238	0007	CANCELLED (3/15/91)			
LG	PROC	EP	EP-240	0000	CANCELLED			LWE
LG	PROC	EP	EP-241	0014	CANCELLED 04/03/92 (SUPERCEDED BY ERP-410)			
LG	PROC	EP	EP-242	0007	CANCELLED 04/03/92 (SUPERCEDED BY ERP-420)			
LG	PROC	EP	EP-243	0012	CANCELLED 04/03/92 (SUPERCEDED BY ERP-430)			
LG	PROC	EP	EP-244	0005	CANCELLED 04/03/92 (SUPERCEDED BY ERP-440)			
LG	PROC	EP	EP-250	0009	CANCELLED (4/3/92) INCORPORATED INTO ERP-600			
LG	PROC	EP	EP-251	0005	CANCELLED (4/3/92) INCORPORATED INTO ERP-620			
LG	PROC	EP	EP-252	0016	CANCELLED 04/03/92 (SUPERCEDED BY ERP-500)			
LG	PROC	EP	EP-253	0000	CANCELLED			LWE
LG	PROC	EP	EP-254	0005	CANCELLED (4/3/92) INCORPORATED INTO ERP-630			
LG	PROC	EP	EP-255	0005	CANCELLED (4/3/92) INCORPORATED INTO ERP-260			
LG	PROC	EP	EP-256	0001	CANCELLED (09/26/91)			
LG	PROC	EP	EP-257	0002	CANCELLED (09/26/91)			
LG	PROC	EP	EP-260	0004	CANCELLED			LWE
LG	PROC	EP	EP-261	0010	CANCELLED 04/03/92 (SUPERCEDED BY ERP-800)			
LG	PROC	EP	EP-272	0000	CANCELLED			LWE
LG	PROC	EP	EP-273	0000	CANCELLED			LWE
LG	PROC	EP	EP-275	0000	CANCELLED			LWE
LG	PROC	EP	EP-276	0013	CANCELLED(11/19/90)			LWE
LG	PROC	EP	EP-277	0021	CANCELLED(11/19/90)			LWE
LG	PROC	EP	EP-278	0015	CANCELLED			LWE
LG	PROC	EP	EP-279	0020	CANCELLED(11/13/90)			LWE
LG	PROC	EP	EP-280	0021	CANCELLED(11/13/90)			
LG	PROC	EP	EP-282	0016	CANCELLED (8/13/91)			
LG	PROC	EP	EP-284	0013	CANCELLED (8/13/91)			
LG	PROC	EP	EP-287	0006	CANCELLED - 11/02/88			LWE
LG	PROC	EP	EP-291	0026	CANCELLED 04/03/92 (SUPERCEDED BY ERP-140)			
LG	PROC	EP	EP-292	0018	CANCELLED (4/24/90)			LWE
LG	PROC	EP	EP-294	0020	CANCELLED(6/29/90)INCorp. INTO EP-305			LWE
LG	PROC	EP	EP-301	0003	CANCELLED INCORPORATED INTO EP305			LWE
LG	PROC	EP	EP-302	0002	CANCELLED 04/03/92 (SUPERCEDED BY ERP-800)			LWE
LG	PROC	EP	EP-303	0004	CANCELLED 04/03/92 (SUPERCEDED BY ERP-120)			
LG	PROC	EP	EP-304	0007	CANCELLED 04/03/92 (SUPERCEDED BY ERP-120)			
LG	PROC	EP	EP-305	0010	CANCELLED 04/03/92 (SUPERCEDED BY (ERP-120)			
LG	PROC	EP	EP-306	0006	CANCELLED 04/03/92 (SUPERCEDED BY ERP-500)			
LG	PROC	EP	EP-307	0004	CANCELLED 04/03/92 (SUPERCEDED BY ERP-C-1500)			
LG	PROC	EP	EP-312	0011	CANCELLED (4/3/92) INCORPORATED INTO ERP-350			
LG	PROC	EP	EP-313	0007	CANCELLED (4/3/92) INCORPORATED INTO ERP-660			
LG	PROC	EP	EP-314	0003	CANCELLED(01/03/91)			
LG	PROC	EP	EP-315	0009	CANCELLED			LWE
LG	PROC	EP	EP-316	0004	CANCELLED			LWE

PROCEDURE INDEX REPORT: LIMERICK GENERATING STATION

FAC	DOC TYPE	PROC TYPE	PROCEDURE NUMBER	CURR REV NBR	TITLE	EFFECTIVE DATE	RESP GROUP	SYSTEM NBR
LG	PROC	EP	EP-317	0014	CANCELLED (4/3/92) INCORPORATED INTO ERP-370			
LG	PROC	EP	EP-318	0004	CANCELLED (4/3/92) INCORPORATED INTO ERP-350			
LG	PROC	EP	EP-319	0002	CANCELLED			
LG	PROC	EP	EP-320	0002	CANCELLED(09/21/90)			LWE
LG	PROC	EP	EP-321	0003	CANCELLED(09/21/90)			LWE
LG	PROC	EP	EP-322	0000	CANCELLED(09/21/90)			LWE
LG	PROC	EP	EP-322 APP.9	0001	CANCELLED(11/05/90)			LWE
LG	PROC	EP	EP-324	0000	CANCELLED (4/3/92) INCORPORATED INTO ERP-300			
LG	PROC	EP	EP-324 APP. 5	0000	CANCELLED (4/3/92) INCORPORATED INTO ERP-300			
LG	PROC	EP	EP-324 APP.6	0000	CANCELLED (4/3/92) INCORPORATED INTO ERP-300			
LG	PROC	EP	EP-325	0010	CANCELLED (4/3/92) INCORPORATED INTO ERP-370			
LG	PROC	EP	EP-327	0002	CANCELLED (4/2/92) INCORPORATED INTO ERP-370			
LG	PROC	EP	EP-328	0000	CANCELLED (4/2/92) INCORPORATED INTO ERP-370			
LG	PROC	EP	EP-330	0007	CANCELLED (4/2/92) INCORPORATED INTO ERP-640			
LG	PROC	EP	EP-333	0002	CANCELLED (4/3/92) INCORPORATED INTO ERP-360			
LG	PROC	EP	EP-401	0005	CANCELLED (4/3/92) INCORPORATED INTO ERP-650			
LG	PROC	EP	EP-410	0013	CANCELLED 04/03/92 (SUPERCEDED BY ERP-C-1900)			
LG	PROC	EP	EP-500	0002	CANCELLED			LWE

** END OF REPORT **

PROCEDURE INDEX REPORT:

FAC	DOC TYPE	PROC TYPE	PROCEDURE NUMBER	CURR REV NBR	TITLE	EFFECTIVE DATE	RESP GROUP	SYSTEM NBR
PB	PROC	EP	EP-AA-1000	0014	STANDARIZED RADIOLOGICAL EMERGENCY PLAN	02/20/03	PWE	
PB	PROC	EP	EP-AA-1007	0006	RADIOLOGICAL EMERGENCY PLAN ANNEX FOR PEACH BOTTOM ATOMIC POWER STATION	05/08/03	PWE	
PB	PROC	EP	EP-AA-1101	0001	EP FUNDAMENTALS	12/20/02	PWE	
PB	PROC	EP	EP-AA-1102	0000	ERO FUNDAMENTALS	12/20/02	PWE	
PB	PROC	EP	EP-AA-110	0004	ASSESSMENT OF EMERGENCIES	02/20/03	PWE	
PB	PROC	EP	EP-AA-110-301	0000	CORE DAMAGE ASSESSMENT (BWR)	08/30/02	PWE	
PB	PROC	EP	EP-AA-110-302	0001	CORE DAMAGE ASSESSMENT (PWR)	12/17/02	PWE	
PB	PROC	EP	EP-AA-111	0005	EMERGENCY CLASSIFICATION AND PROTECTIVE ACTION RECOMMENDATIONS	02/20/03	PWE	
PB	PROC	EP	EP-AA-112	0007	EMERGENCY RESPONSE ORGANIZATION (ERO)/EMERGENCY RESPONSE FACILITY (ERF) ACTIVATION AND OPERATION	02/20/03	PWE	
PB	PROC	EP	EP-AA-112-100	0005	CONTROL ROOM OPERATIONS	02/20/03	PWE	
PB	PROC	EP	EP-AA-112-200	0004	TSC ACTIVATION AND OPERATION	02/20/03	PWE	
PB	PROC	EP	EP-AA-112-201	0001	TSC COMMAND AND CONTROL	02/20/03	PWE	
PB	PROC	EP	EP-AA-112-202	0001	TSC FACILITY SUPPORT GROUP	02/20/03	PWE	
PB	PROC	EP	EP-AA-112-203	0001	TSC OPERATION GROUP	02/20/03	PWE	
PB	PROC	EP	EP-AA-112-204	0001	TSC TECHNICAL SUPPORT GROUP	02/20/03	PWE	
PB	PROC	EP	EP-AA-112-205	0001	TSC MAINTENANCE GROUP	02/20/03	PWE	
PB	PROC	EP	EP-AA-112-206	0001	TSC RADIATION PROTECTION/CHEMISTRY GROUP	02/20/03	PWE	
PB	PROC	EP	EP-AA-112-300	0004	OPERATIONS SUPPORT CENTER ACTIVATION AND OPERATION	02/20/03	PWE	
PB	PROC	EP	EP-AA-112-400	0004	EMERGENCY OPERATIONS FACILITY ACTIVATION AND OPERATION	02/20/03	PWE	
PB	PROC	EP	EP-AA-112-401	0001	NUCLEAR DUTY OFFICER (NDO)	02/20/03	PWE	
PB	PROC	EP	EP-AA-112-402	0001	EOF COMMAND AND CONTROL	02/20/03	PWE	
PB	PROC	EP	EP-AA-112-403	0001	EOF LOGISTICS SUPPORT GROUP	02/20/03	PWE	
PB	PROC	EP	EP-AA-112-404	0001	EOF TECHNICAL SUPPORT GROUP	02/20/03	PWE	
PB	PROC	EP	EP-AA-112-405	0001	EOF PROTECTIVE MEASURES GROUP	02/20/03	PWE	
PB	PROC	EP	EP-AA-112-500	0005	EMERGENCY ENVIRONMENTAL MONITORING	02/20/03	PWE	
PB	PROC	EP	EP-AA-112-600	0005	PUBLIC INFORMATION ORGANIZATION ACTIVATION AND OPERATIONS	02/20/03	PWE	
PB	PROC	EP	EP-AA-112-601	0001	EMERGENCY NEWS CENTER (ENC) OPERATIONS	02/20/03	PWE	
PB	PROC	EP	EP-AA-112-602	0001	JPIC ACTIVATION AND OPERATION	02/20/03	PWE	
PB	PROC	EP	EP-AA-113	0004	PERSONNEL PROTECTIVE ACTIONS	02/20/03	PWE	
PB	PROC	EP	EP-AA-114	0004	NOTIFICATIONS	08/30/02	PWE	
PB	PROC	EP	EP-AA-115	0001	RECOVERY FROM A CLASSIFIED EVENT	02/20/03	PWE	
PB	PROC	EP	EP-AA-120	0003	EMERGENCY PLAN ADMINISTRATION	08/30/02	PWE	
PB	PROC	EP	EP-AA-120-1001	0003	10 CFR 50.54(Q) CHANGE EVALUATION	12/20/02	PWE	
PB	PROC	EP	EP-AA-120-1002	0000	STORM/EVENT RESTORATION	04/30/03	PWE	
PB	PROC	EP	EP-AA-121	0003	EMERGENCY RESPONSE FACILITIES AND EQUIPMENT READINESS	10/18/02	PWE	
PB	PROC	EP	EP-AA-121-1001	0003	AUTOMATED CALL-OUT SYSTEM MAINTENANCE	12/20/02	PWE	
PB	PROC	EP	EP-AA-122	0003	DRILLS AND EXERCISES	04/30/03	PWE	
PB	PROC	EP	EP-AA-122-1001	0002	DRILL DEVELOPMENT, CONDUCT AND EVALUATION	12/20/02	PWE	
PB	PROC	EP	EP-AA-122-1002	0002	EXERCISE DEVELOPMENT, CONDUCT AND EVALUATION	12/20/02	PWE	
PB	PROC	EP	EP-AA-122-1003	0002	SCHEDULING OF DRILLS AND EXERCISES	12/20/02	PWE	
PB	PROC	EP	EP-AA-122-1004	0001	DEMONSTRATION CRITERIA	12/20/02	PWE	
PB	PROC	EP	EP-AA-123	0002	COMPUTER PROGRAMS	10/18/02	PWE	
PB	PROC	EP	EP-AA-124	0004	INVENTORIES AND SURVEILLANCES	11/12/02	PWE	
PB	PROC	EP	EP-AA-125	0002	EMERGENCY PREPAREDNESS SELF EVALUATION PROCESS	12/20/02	PWE	
PB	PROC	EP	EP-AA-125-1001	0002	EP PERFORMANCE INDICATOR GUIDANCE	12/20/02	PWE	
PB	PROC	EP	EP-AA-125-1002	0002	ERO PERFORMANCE - PERFORMANCE INDICATORS GUIDANCE	12/20/02	PWE	
PB	PROC	EP	EP-AA-125-1003	0002	ERP READINESS - PERFORMANCE INDICATORS GUIDANCE	12/20/02	PWE	
PB	PROC	EP	EP-AA-125-1004	0002	EMERGENCY RESPONSE FACILITIES & EQUIPMENT PERFORMANCE INDICATORS	12/20/02	PWE	

PEACH BOTTOM ATOMIC POWER STATION

PROCEDURE INDEX REPORT:

FAC	DOC TYPE	PROC TYPE	PROCEDURE NUMBER	CURR REV NBR	TITLE	EFFECTIVE DATE	RESP GROUP	SYSTEM NBR
PB	PROC	EP	EP-AA-125-1004	0002	GUIDANCE	12/20/02	PWE	
PB	PROC	EP	EP-AA-125-1005	0000	PROBLEM IDENTIFICATION & RESOLUTION PERFORMANCE INDICATOR GUIDANCE	12/20/02	PWE	
PB	PROC	EP	EP-C-2	0008	EMERGENCY PREPAREDNESS CORRECTIVE ACTION PROCESS - CANCELLED REPLACED BY LS-AA-125	07/24/01	PWE	
PB	PROC	EP	EP-C-2-1	0001	IFA FOR ACTION ITEM TRACKING SYSTEM - CANCELLED - NO REPLACEMENT	03/10/97	PWE	
PB	PROC	EP	EP-C-2-2	0001	ACTION/REQUEST EVALUATION NUMBERS AND TREND CODES CANCELLED - NO REPLACEMENT	12/18/98	PWE	
PB	PROC	EP	EP-C-3-1 EXH	0000	DEVELOPMENT AND MAINTENANCE OF THE EMERGENCY RESPONSE FACILITIES AND EQUIPMENT (ERF/E) PROGRAM - CANCELLED - NO REPLACEMENT	04/17/95	PWE	
PB	PROC	EP	EP-C-4-1	0000	FLOWCHART OF DESIGNATION, TRAINING AND MAINTENANCE OF NUCLEAR ERO CANCELLED - NO REPLACEMENT	03/10/97	PWE	
PB	PROC	EP	EP-C-5-1	0000	INTERFACE AGREEMENT FOR OFFSITE ORGANIZATION MATRIX REVIEW - CANCELLED - NO REPLACEMENT	03/10/97	PWE	
PB	PROC	EP	EP-C-5-2	0000	INTERFACE AGREEMENT MATRIX FOR OFFSITE ORGANIZATIONS CANCELLED - NO REPLACEMENT CANCELLED - NO REPLACEMENT	04/10/00	PWE	
PB	PROC	EP	EP-C-6	0004	PREPARATION, CONDUCT, AND EVALUATION OF EMERGENCY RESPONSE DRILLS AND EXERCISES CANCELLED - REPLACED BY EP-MA-122	02/21/02	PWE	
PB	PROC	EP	EP-C-6-1	0000	DRILL OBJECTIVES - CANCELLED - NO REPLACEMENT	03/10/97	PWE	
PB	PROC	EP	EP-C-6-2	0000	ANNUAL EXERCISE SCENARIO SUBMITTAL GUIDELINES - CANCELLED - NO REPLACEMENT	03/10/97	PWE	
PB	PROC	EP	EP-C-6-3	0000	SCENARIO MANUAL FORMAT - CANCELLED - NO REPLACEMENT	03/10/97	PWE	
PB	PROC	EP	EP-C-6-4	0000	DRILL ACTIVITY CHECKLIST - CANCELLED - NO REPLACEMENT	03/10/97	PWE	
PB	PROC	EP	EP-C-6-5	0000	DRILL REPORT FORMAT - CANCELLED - NO REPLACEMENT	03/10/97	PWE	
PB	PROC	EP	EP-C-7-1	0000	IFA FOR ROUTINE ADMINISTRATION & TESTING CANCELLED - NO REPLACEMENT	03/10/97	PWE	
PB	PROC	EP	EP-C-7-2	0000	IFA FOR EMERGENCY SIREN MAINTENANCE CANCELLED - NO REPLACEMENT	03/10/97	PWE	
PB	PROC	EP	EP-MA-110-100	0001	ERO COMPUTER APPLICATIONS	02/20/03	PWE	
PB	PROC	EP	EP-MA-110-200	0002	DOSE ASSESSMENT	02/20/03	PWE	
PB	PROC	EP	EP-MA-112-406	0001	MAROG OFFSITE LIASONS	02/20/03	PWE	
PB	PROC	EP	EP-MA-113-100	0001	ASSEMBLY AND SITE EVACUATION	02/20/03	PWE	
PB	PROC	EP	EP-MA-114-100	0003	MAROG NOTIFICATIONS	05/08/03	PWE	
PB	PROC	EP	EP-MA-121-1002	0000	ALERT NOTIFICATION SYSTEM (ANS) DESCRIPTION, TESTING, MAINTENANCE AND PERFORMANCE TRENDING PROGRAM	12/20/02	PWE	
PB	PROC	EP	EP-MA-121-1004	0000	EMERGENCY PREPAREDNESS ALERT NOTIFICATION SYSTEM (ANS) CONTROL OF EQUIPMENT & OUTAGES	12/20/02	PWE	
PB	PROC	EP	EP-MA-122	0000	EXERCISE AND DRILLS - CANCELLED REPLACED BY EP-AA-122	10/18/02	PWE	
PB	PROC	EP	EP-MA-122-1001	0002	DRILL DEVELOPMENT, CONDUCT AND EVALUATION - CANCELLED REPLACED BY EP-AA-122-1001	10/18/02	PWE	
PB	PROC	EP	EP-MA-122-1002	0002	EXERCISE DEVELOPMENT, CONDUCT AND EVALUATION - CANCELLED REPLACED BY EP-AA-122-1002	10/18/02	PWE	
PB	PROC	EP	EP-MA-122-1003	0000	SCHEDULING OF DRILLS AND EXERCISES - CANCELLED REPLACED BY EP-AA-122-1003	10/18/02	PWE	
PB	PROC	EP	EP-MA-122-1004	0000	DEMONSTRATION CRITERIA - CANCELLED REPLACED BY EP-AA-122-1004	10/18/02	PWE	
PB	PROC	EP	EP-MA-124-1001	0001	FACILITY INVENTORIES AND EQUIPMENT TESTS	02/20/03	PWE	
PB	PROC	EP	EP-MA-125-1002	0000	COLLECTION AND EVALUATION OF DATA FOR INDICATOR E EP.01 "DRILL EXERCISE PERFORMANCE" CANCELLED - EP-AA-125-1002	12/20/02	PWE	
PB	PROC	EP	EP-MA-125-1003	0001	COLLECTION AND EVALUATION OF DATA FOR INDICATOR R.EP.02, "EMERGENCY RESPONSE ORGANIZATION PARTICIPATION" CANCELLED - REPLACED BY EP-AA-125-1003	12/20/02	PWE	

PEACH BOTTOM ATOMIC POWER STATION
PROCEDURE INDEX REPORT:

FAC	DOC TYPE	PROC TYPE	PROCEDURE NUMBER	CURR REV NBR	TITLE	EFFECTIVE DATE	RESP GROUP	SYSTEM NBR
PB	PROC	EP	EP-MA-125-1004	0000	COLLECTION AND EVALUATION OF DATA FOR INDIATOR R.EP.03 ALERT & NOTIFICATION SYSTEM RELIABILITY CANCELLED - REPLACED BY EP-AA-125-1004	12/20/02	PWE	
PB	PROC	EP	EP-UG-01	0005	CONTROL OF EP GUIDELINES	12/07/98		
PB	PROC	EP	EP-UG-05	0004	EMERGENCY PREPAREDNESS STAFF ORIENTATION	12/07/98		
PB	PROC	EP	EP-UG-05-1	0004	CHECKLIST FOR EMERGENCY PREPAREDNESS STAFF ORIENTATION	03/13/00		

** END OF REPORT **

EXELON TRAINING AND REFERENCE MATERIAL

<u>PROCEDURE NUMBER</u>	<u>REV</u>	<u>EFFDATE</u>	<u>SITE</u>	<u>PROCEDURE TITLE</u>	<u>TC NUMBER</u>
EP-AA-1000	14	2003-03-28	TM11	STANDARDIZED RADIOLOGICAL EMERGENCY PLAN	N/A
EP-AA-1009	0	2003-03-28	TM11	EXELON NUCLEAR RADIOLOGICAL EMERGENCY PLAN ANNEX FOR THREE MILE ISLAND (TMI) STATION	N/A
EP-AA-1101	1	2003-03-28	TM11	EP FUNDAMENTALS	N/A
EP-AA-1102	0	2003-03-28	TM11	ERO FUNDAMENTALS	N/A
EP-AA-120-1001	3	2003-05-09	TM11	10 CFR 50.54(Q) CHANGE EVALUATION	N/A
EP-AA-120-1002	0	2003-03-28	TM11	STORM / EVENT RESTORATION	N/A
EP-AA-121-1001	3	2003-05-09	TM11	AUTOMATED CALL-OUT SYSTEM MAINTENANCE	N/A
EP-AA-122-1001	2	2003-03-28	TM11	DRILL DEVELOPMENT CONDUCT AND EVALUATION	N/A
EP-AA-122-1002	2	2003-03-28	TM11	EXERCISE DEVELOPMENT CONDUCT AND EVALUATION	N/A
EP-AA-122-1003	2	2003-03-28	TM11	SCHEDULING OF DRILLS AND EXERCISES.	N/A
EP-AA-122-1004	1	2003-03-28	TM11	DEMONSTRATION CRITERIA	N/A
EP-AA-125-1001	2	2002-12-20	TM11	EP PERFORMANCE INDICATOR GUIDANCE	2
EP-AA-125-1002	2	2002-12-20	TM11	ERO PERFORMANCE - PERFORMANCE INDICATORS GUIDANCE	2
EP-AA-125-1003	2	2003-03-28	TM11	ERO READINESS - PERFORMANCE INDICATORS GUIDANCE	N/A
EP-AA-125-1004	2	2002-12-20	TM11	EMERGENCY RESPONSE FACILITIES & EQUIPMENT PERFORMANCE INDICATORS GUIDANCE	N/A
EP-AA-125-1005	0	2002-12-20	TM11	PROBLEM IDENTIFICATION AND RESOLUTION PERFORMANCE INDICATOR GUIDANCE	2

<u>PROCEDURE NUMBER</u>	<u>REV</u>	<u>EFFDATE</u>	<u>SITE</u>	<u>PROCEDURE TITLE</u>	<u>TC NUMBER</u>
EP-MA-121-1002	0	2003-03-28	TMI1	ALERT NOTIFICATION SYSTEM (ANS) DESCRIPTION TESTING MAINTENANCE AND PERFORMANCE TRENDING PROGRAM	N/A
EP-MA-121-1004	0	2003-03-28	TMI1	EMERGENCY PREPAREDNESS ALERT NOTIFICATION SYSTEM (ANS) CONTROL OF EQUIPMENT & OUTAGES	N/A
EP-MA-124-1001	1	2003-03-28	TMI1	FACILITY INVENTORIES AND EQUIPMENT TESTS	N/A
EP-MA-125-1002	N/A	2001-06-21	TMI1	COLLECTION AND EVALUATION OF DATA FOR INDICATOR R.EP.01 DRILL AND EXERCISE PERFORMANCE	N/A
EP-MA-125-1003	2	2002-12-20	TMI1	ERO READINESS - PERFORMANCE INDICATORS GUIDANCE	2

EMERGENCY PLAN IMPLEMENTING PROCEDURE / DOCUMENT

<u>PROCEDURE NUMBER</u>	<u>REV</u>	<u>EFFDATE</u>	<u>SITE</u>	<u>PROCEDURE TITLE</u>	<u>TC NUMBER</u>	<u>LEVEL</u>
EP-AA-110	4	2003-03-28	TMI1	ASSESSMENT OF EMERGENCIES		2
EP-AA-110-301	0	2003-03-28	TMI1	CORE DAMAGE ASSESSMENT (BWR)		2
EP-AA-110-302	1	2003-03-28	TMI1	CORE DAMAGE ASSESSMENT (PWR)		2
EP-AA-111	5	2003-03-28	TMI1	EMERGENCY CLASSIFICATION AND PROTECTIVE ACTION RECOMMENDATIONS		2
EP-AA-112	7	2003-03-28	TMI1	EMERGENCY RESPONSE ORGANIZATION (ERO) - EMERGENCY RESPONSE FACILITY (ERF) ACTIVATION AND OPERATION		2
EP-AA-112-100	5	2003-03-28	TMI1	CONTROL ROOM OPERATIONS		2
EP-AA-112-200	4	2003-03-28	TMI1	TSC ACTIVATION AND OPERATION		2
EP-AA-112-201	1	2003-03-28	TMI1	TSC COMMAND AND CONTROL		2
EP-AA-112-202	1	2003-03-28	TMI1	TSC FACILITY SUPPORT GROUP		2
EP-AA-112-203	1	2003-03-28	TMI1	TSC OPERATION GROUP		2
EP-AA-112-204	1	2003-03-28	TMI1	TSC TECHNICAL SUPPORT GROUP		2
EP-AA-112-205	1	2003-03-28	TMI1	TSC MAINTENANCE GROUP		2
EP-AA-112-206	1	2003-03-28	TMI1	TSC RADIATION PROTECTION / CHEMISTRY GROUP		2
EP-AA-112-300	4	2003-03-28	TMI1	OPERATIONS SUPPORT CENTER ACTIVATION AND OPERATION		2
EP-AA-112-400	4	2003-03-28	TMI1	EMERGENCY OPERATIONS FACILITY ACTIVATION AND OPERATION		2
EP-AA-112-401	1	2003-03-28	TMI1	NUCLEAR DUTY OFFICER (NDO)		2
EP-AA-112-402	1	2003-03-28	TMI1	EOF COMMAND AND CONTROL		2
EP-AA-112-403	1	2003-03-28	TMI1	EOF LOGISTICS SUPPORT GROUP		2
EP-AA-112-404	1	2003-03-28	TMI1	EOF TECHINICAL SUPPORT GROUP		2

<u>PROCEDURE NUMBER</u>	<u>REV</u>	<u>EFFDATE</u>	<u>SITE</u>	<u>PROCEDURE TITLE</u>	<u>TC NUMBER</u>	<u>LEVEL</u>
EP-AA-112-405	1	2003-03-28	TMI1	EOF PROTECTIVE MEASURES GROUP		2
EP-AA-112-500	5	2003-03-28	TMI1	EMERGENCY ENVIRONMENTAL MONITORING		2
EP-AA-112-600	5	2003-03-28	TMI1	PUBLIC INFORMATION ORGANIZATION ACTIVATION AND OPERATIONS		2
EP-AA-112-601	1	2003-03-28	TMI1	EMERGENCY NEWS CENTER (ENC) OPERATIONS		2
EP-AA-112-602	1	2003-03-28	TMI1	JPIC ACTIVATION AND OPERATION		2
EP-AA-113	4	2003-03-28	TMI1	PERSONNEL PROTECTIVE ACTIONS		2
EP-AA-114	4	2003-03-28	TMI1	NOTIFICATIONS		2
EP-AA-115	1	2003-03-28	TMI1	RECOVERY FROM A CLASSIFIED EVENT		2
EP-AA-120	3	2003-03-28	TMI1	EMERGENCY PLAN ADMINISTRATION		2
EP-AA-121	3	2003-03-28	TMI1	EMERGENCY RESPONSE FACILITIES AND EQUIPMENT READINESS		2
EP-AA-122	3	2003-03-28	TMI1	DRILLS AND EXERCISES		2
EP-AA-123	2	2003-03-28	TMI1	COMPUTER PROGRAMS		2
EP-AA-124	4	2003-03-28	TMI1	INVENTORIES AND SURVEILLANCES		2
EP-AA-125	2	2002-12-20	TMI1	EMERGENCY PREPAREDNESS SELF EVALUATION PROCESS		2
EP-MA-110-100	1	2003-03-28	TMI1	ERO COMPUTER APPLICATIONS		2
EP-MA-110-200	2	2003-03-28	TMI1	DOSE ASSESSMENT.		2
EP-MA-112-406	1	2003-03-28	TMI1	MAROG OFFSITE LIAISONS		2
EP-MA-113-100	1	2003-03-28	TMI1	ASSEMBLY AND SITE EVACUATION		2
EP-MA-114-100	3	2003-05-08	TMI1	MAROG NOTIFICATIONS		2
EPIP-TMI-.06	43	2002-12-02	TMI1	ADDITIONAL ASSISTANCE AND NOTIFICATION		3

<u>PROCEDURE NUMBER</u>	<u>REV</u>	<u>EFFDATE</u>	<u>SITE</u>	<u>PROCEDURE TITLE</u>	<u>TC NUMBER</u>	<u>LEVEL</u>
EPIP-TMI-.16	11	2002-07-12	TMI1	CONTAMINATED INJURIES		2
EPIP-TMI-.19	10	2000-10-20	TMI1	EMERGENCY DOSIMETRY / SECURITY BADGE ISSUANCE		2
TEP-ADM-1300.01	11	2003-03-28	TMI1	MAINTAINING EMERGENCY PREPAREDNESS		2
TEP-ADM-1300.02	10	2001-03-01	TMI1	EMERGENCY PREPAREDNESS TRAINING		3
TEP-ADM-1300.04	9	2002-05-10	TMI1	ADMINISTRATION OF THE TMI INITIAL RESPONSE AND EMERGENCY SUPPORT ORGANIZATION DUTY ROSTER		3
TEP-ADM-1300.05	12	2003-03-28	TMI1	EMERGENCY EQUIPMENT READINESS		2

SERIES: 0054 EMERGENCY PREPAREDNESS PROCEDURE

<u>PROCEDURE NUMBER</u>	<u>REV</u>	<u>EFFDATE</u>	<u>SITE</u>	<u>PROCEDURE TITLE</u>	<u>TC NUMBER</u>	<u>LEVEL</u>
TEP-SUR-1310.01	11	2003-03-28	TMI1	EMERGENCY COMMUNICATIONS TEST PROCEDURE		2
TEP-SUR-1310.05	5	2003-03-28	TMI1	VERIFICATION OF EMERGENCY PREPAREDNESS AIDS		3
TEP-SUR-1310.10	5	2001-11-13	TMI1	PROCEDURE CHANGE NOTIFICATION		3
TMI-ADM-1201.01	3	2001-11-07	TMI1	EMERGENCY PREPAREDNESS EVENT REPORTS		3