

ENCLOSURE 7



U.S. Department of Energy
Office of Civilian Radioactive Waste Management



License Application Progress

Presented to:

DOE/NRC Quarterly Management Meeting

Presented by:

Joseph Ziegler

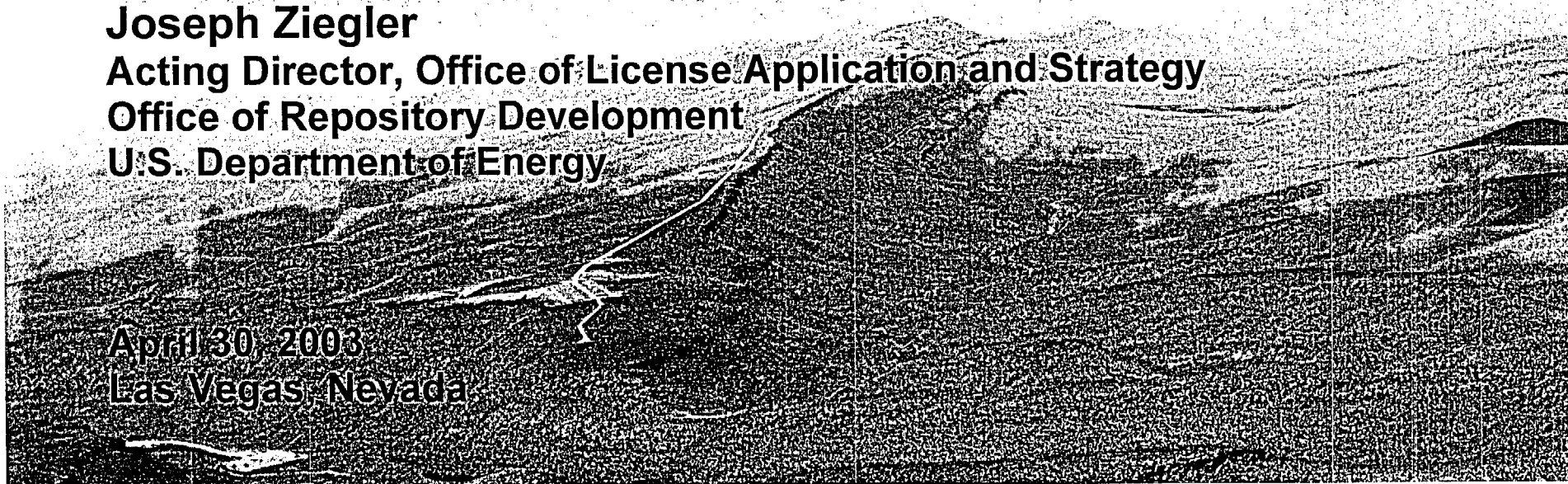
Acting Director, Office of License Application and Strategy

Office of Repository Development

U.S. Department of Energy

April 30, 2003

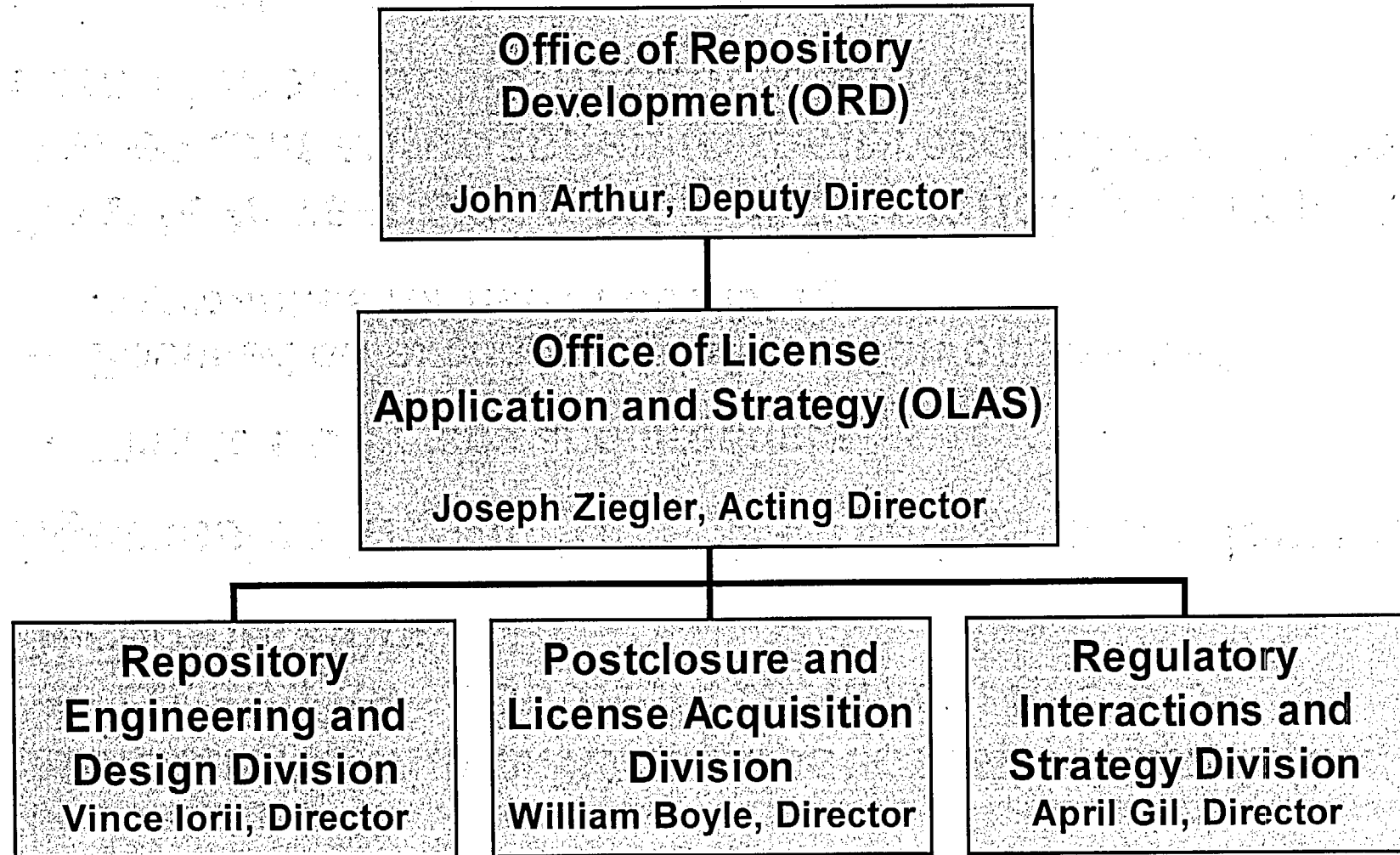
Las Vegas, Nevada



Outline

- **Office of License Application and Strategy Organization**
- **Interactions and License Application (LA) Completion**
- **Key Technical Issue (KTI) Agreements**
- **Issues for Discussion and Near-Term Resolution**
- **Yucca Mountain Project Status**
- **Summary**

Office of License Application and Strategy Organization



Interactions and License Application Completion

- **Interactions with NRC are essential to completing the LA and its supporting technical basis by December 2004**
- **Aggressive interaction schedule has been developed**
 - **Tied to DOE plans and products**
 - **Focused on exchanging information on selected approaches for use in licensing**
- **Goal is to reach common understanding of important issues and approaches to their resolution prior to commitment of significant resources**
- **Timely NRC feedback on DOE positions and approaches is desirable**



Key Technical Issue Agreements

- **DOE understands NRC concerns about schedule for submittal of information to address KTI agreements**
 - Scheduled submittals have been delayed
 - Submittals peak in late 2003 - early 2004
 - Some information will be provided just before LA submittal
- **Current submittal schedule reflects time needed to complete analyses**
 - Efforts to provide information to NRC early in the process have generally not been successful
 - Level of detail needed to complete KTI agreements
- **Budget impact on KTI schedule being evaluated as part of overall re-planning effort**



Issues for Discussion and Near-Term Resolution

- Risk-prioritization approach for completion of some KTI agreements
- Final Yucca Mountain Review Plan
- Level of design detail needed in LA for construction authorization
- Burn-up credit based on utility data (process knowledge)
- Aircraft hazards analysis and treatment of potentially sensitive homeland security information
- Licensing support network



Yucca Mountain Project Status

