

MANUAL HARD COPY DISTRIBUTION

DOCUMENT TRANSMITTAL 2003-19496

USER INFORMATION:

~~GERLACH*ROSE M~~ EMPL#:28401 CA#: 0363

~~Address: NUCSA2~~

~~Phone#: 254-3194~~

TRANSMITTAL INFORMATION:

TO: ~~GERLACH*ROSE M~~ 04/17/2003
LOCATION: DOCUMENT CONTROL DESK
FROM: NUCLEAR RECORDS DOCUMENT CONTROL CENTER
(NUCSA-2)

THE FOLLOWING CHANGES HAVE OCCURRED TO THE HARDCOPY
OR ELECTRONIC MANUAL ASSIGNED TO YOU:

104 - 104 - RADIATION PROTECTION COORDINATOR (RPC):
EMERGENCY PLSN-POSITION SPECIFIC PROCEDURE

REMOVE MANUAL TABLE OF CONTENTS DATE: 03/20/2003

ADD MANUAL TABLE OF CONTENTS DATE: 04/16/2003

CATEGORY: PROCEDURES TYPE: EP
ID: EP-PS-104
REPLACE: REV:16

REPLACE: REV:16

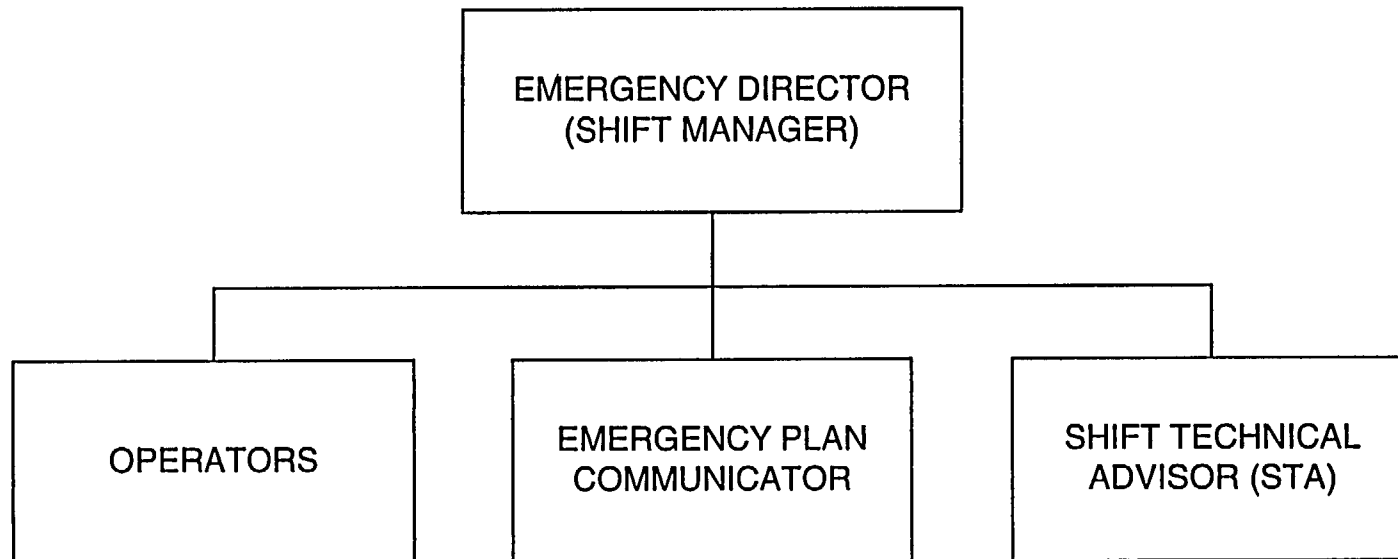
REMOVE: PCAF 2003-1209 REV: N/A

ADD: PCAF 2003-1209 REV: N/A

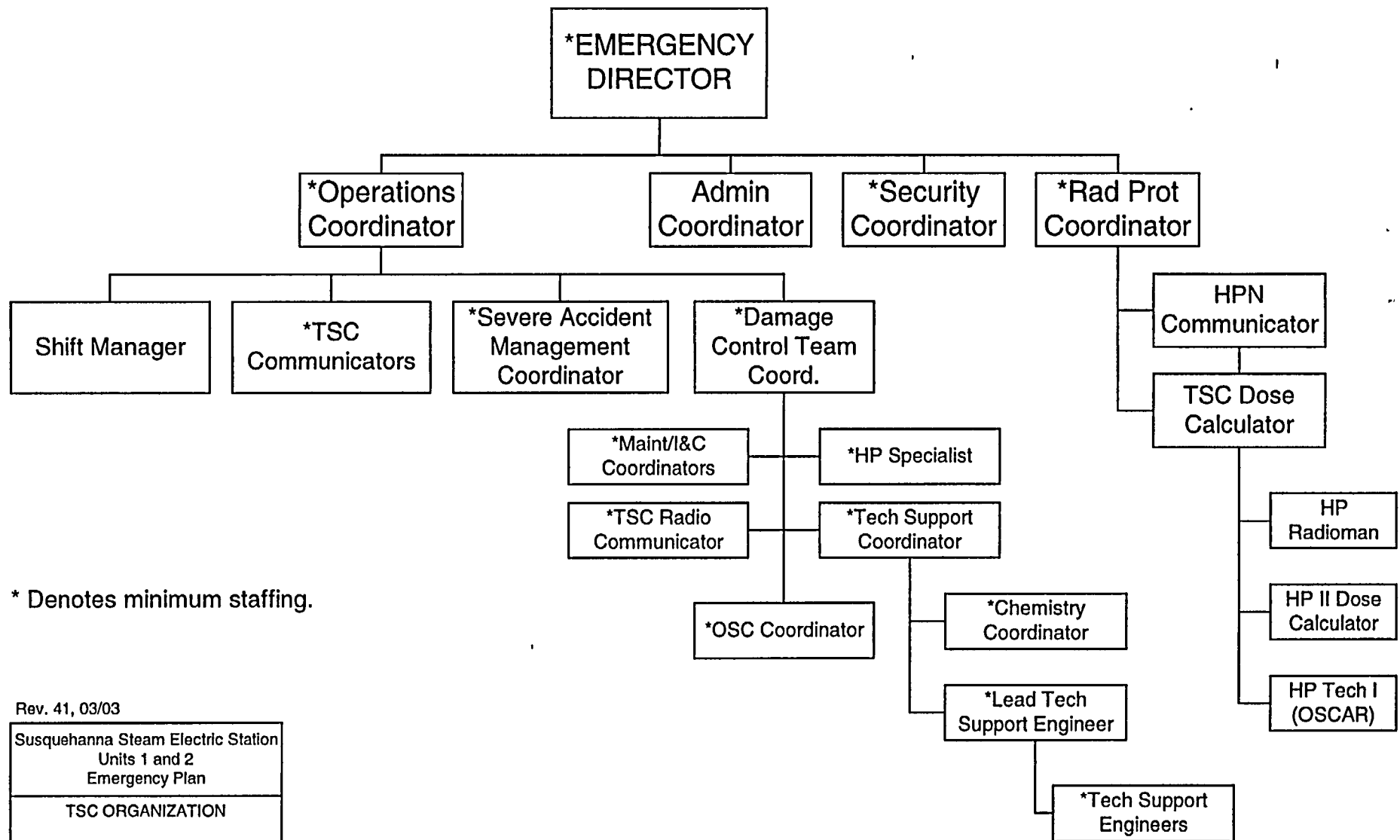
UPDATES FOR HARD COPY MANUALS WILL BE DISTRIBUTED
WITHIN 5 DAYS IN ACCORDANCE WITH DEPARTMENT
PROCEDURES. PLEASE MAKE ALL CHANGES AND
ACKNOWLEDGE COMPLETE IN YOUR NIMS INBOX UPON
RECEIPT OF HARD COPY. FOR ELECTRONIC MANUAL USERS,
ELECTRONICALLY REVIEW THE APPROPRIATE DOCUMENTS AND
ACKNOWLEDGE COMPLETE IN YOUR NIMS INBOX.

A045

EMERGENCY ORGANIZATION CONTROL ROOM



TSC ORGANIZATION



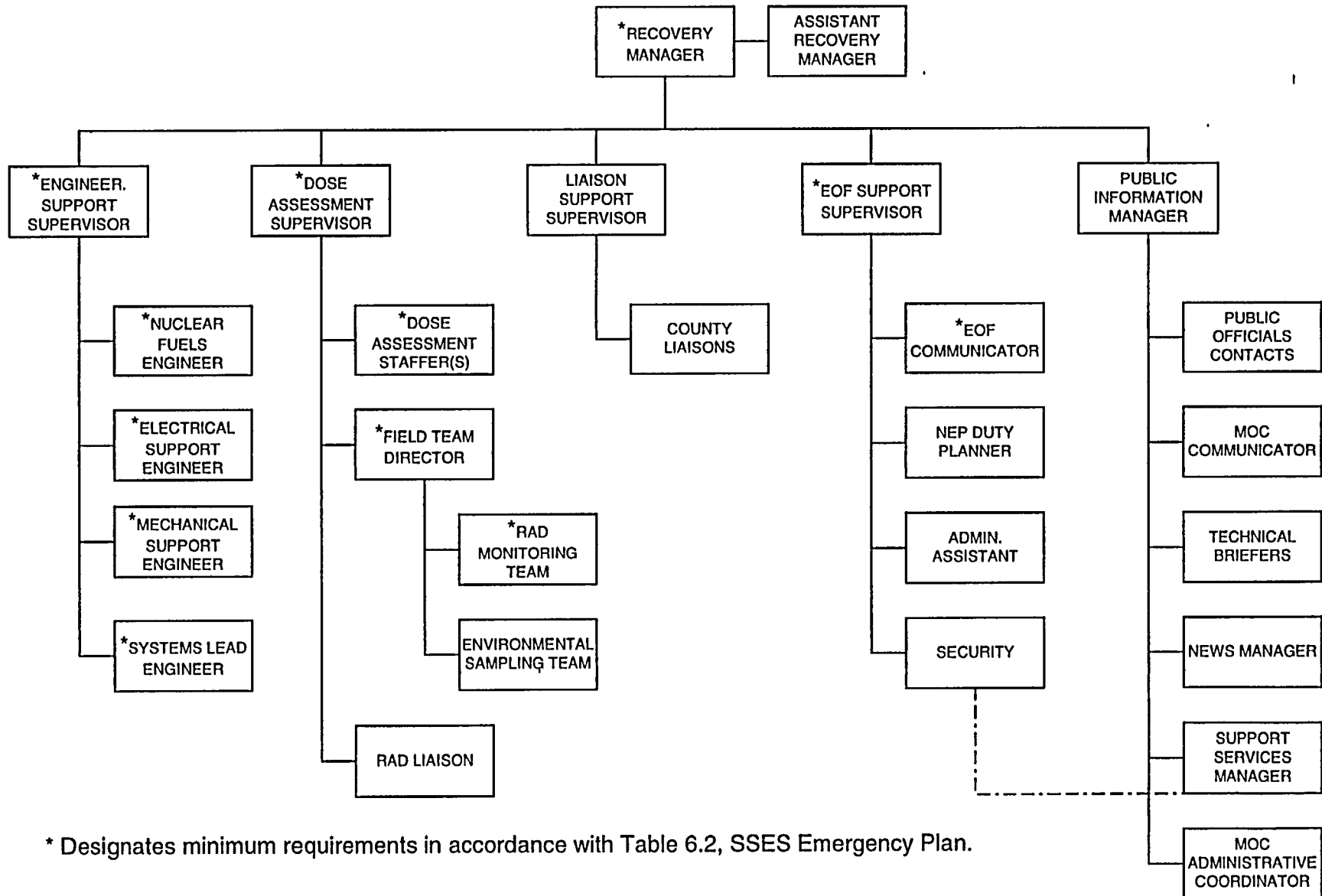
Rev. 41, 03/03

Susquehanna Steam Electric Station
Units 1 and 2
Emergency Plan

TSC ORGANIZATION

FIGURE 6.2

EOF ORGANIZATION



* Designates minimum requirements in accordance with Table 6.2, SSES Emergency Plan.

EMERGENCY EXPOSURE EXTENSIONS

EXTENSION		APPROVAL	ACTIONS
FROM mrem (TEDE)	TO mrem (TEDE)		
4000	<25000	ED and RPC/RM and RSM	ALL OF THE LISTED APPROVALS AND APPLY EMERGENCY EXPOSURE CONSIDERATIONS
>25000		ED and RPC/RM and RSM	ALL OF THE LISTED APPROVALS, APPLY EMERGENCY EXPOSURE CONSIDERATIONS AND BRIEFING ON RISKS

ALARA REVIEW

Check ☒

A. PERSON-REM ESTIMATION

- | | |
|---|--|
| <p>_____ 1. Assess the number of workers required.</p> <p>2. Evaluate the use of fewer workers.</p> <p>3. Investigate experience of workers selected.</p> | <p>4. Assure all workers have essential, productive tasks.</p> <p>5. Assure workers have available exposure.</p> <p>6. Evaluate criteria for emergency exposure.</p> |
|---|--|

B. PLANNING

- | | |
|--|---|
| <p>_____ 1. Preplanning meeting with supervisors and/or workers required.</p> <p>2. Access to and exit from work are planned.</p> <p>3. Evaluate staging/setup in accessible low dose rate area.</p> | <p>4. Prefabrication considered.</p> <p>5. Evaluate use of remote handling devices or other special tools.</p> <p>6. Cold equipment "mockups", rehearsals, or other practical exercise.</p> |
|--|---|

C. EXPOSURE REDUCTION CONTROLS

- | | |
|---|---|
| <p>_____ 1. Evaluate need for timekeeping.</p> <p>2. Consider use of water bucket shielding for carrying hot parts.</p> <p>3. Consider use of shielded drums or lead "pigs" for carrying hot parts.</p> <p>4. Consider use of temporary shielding such as lead wool blankets, lead sheets, or lead bricks.</p> <p>5. Consider use of shadow shields utilizing a portable curtain shield.</p> <p>6. System or equipment to be filled with water.</p> | <p>7. System or equipment to be drained and flushed.</p> <p>8. Assess exposure reduction by permitting decay of radiation sources during reactor shutdown or system isolation.</p> <p>9. Assess the need of communication devices such as head sets, TV cameras, others.</p> <p>10. Assess practicality of removing component from radiation area.</p> <p>11. Evaluate use of photographs of "as installed equipment" to aid in worker briefings.</p> |
|---|---|

D. AIRBORNE/CONTAMINATION CONTROL

- | | |
|--|--|
| <p>_____ 1. Assess need for respiratory protection usage against effectiveness of engineering controls.</p> <p>2. Assess individual's history of internal DAC-Hr exposure to airborne contamination.</p> | <p>3. Assess necessity of area decon before commencement of work.</p> <p>4. Containment structure (tent) required.</p> <p>5. Portable ventilation system required.</p> <p>6. Assess need for flooding or draining rooms.</p> <p>7. Assess hot particle or fuel fragment migration.</p> |
|--|--|

Performed by _____

Provided below are the instructions on how to retrieve an individual's occupational exposure information.

1. Log into NIMS, go to RPDPERX screen.
2. Query the individual.
3. Click on DOSE SUMMARIES button.
4. The screen in Figure 1 will appear.
5. The individual's YEAR-TO-DATE (YTD) dose will be provided as 'NRC PERIOD EXPOSURE' for the current calendar year.

The screenshot displays the 'Radiation Protection Management {PPL TATS}' application window. The 'RPDPERX' menu is open, and the 'Dose Summaries' option is selected. The 'Person Related Information' section shows the individual's name as MORRISSEY*MARISA and ID as 139560837, with the SSN type selected. Below this, the 'Dose Summaries' tab is active, showing a table of exposure data.

MP	Type	DDE (mrem)	LDE (mrem)	SDE.WB (mrem)	SDE.ME (mrem)	CEDE (mrem)	CDE (mrem)	TEDE (mrem)	TODE (mrem)
	Lifetime Exposure	52	52	62	62	0	0	52	52
	Lifetime Level							45000	
2002	NRC Period Available	2000	12000	40000	40000			2000	2000
2002	NRC Period Exposure	0	0	0	0	0	0	0	0
2002	NRC Period Level	2000	12000	40000	40000			2000	2000
2002	non SSES Exposure								
2002	SSES Exposure	0	0	0	0	0	0	0	0

Identifier for monitoring period.

Figure 1