

Apr. 17, 2003

Page 1 of 1

MANUAL HARD COPY DISTRIBUTION

DOCUMENT TRANSMITTAL 2003-19671

---

USER INFORMATION:

~~GERLACH\*ROSE M~~ EMPL#:28401 CA#: 0363

~~Address: NUCSA2~~

~~Phone#: 254-3194~~

TRANSMITTAL INFORMATION:

TO: ~~GERLACH\*ROSE M~~ 04/17/2003

LOCATION: DOCUMENT CONTROL DESK

FROM: NUCLEAR RECORDS DOCUMENT CONTROL CENTER  
(NUCSA-2)

THE FOLLOWING CHANGES HAVE OCCURRED TO THE HARDCOPY  
OR ELECTRONIC MANUAL ASSIGNED TO YOU:

127 - 127 - TECHNICAL SUPPORT CENTER (TSC)  
COMMUNICATOR: EMERGENCY PLAN-POSITION SPECIFIC  
PROCEDURE

REMOVE MANUAL TABLE OF CONTENTS DATE: 02/26/2003

ADD MANUAL TABLE OF CONTENTS DATE: 04/16/2003

CATEGORY: PROCEDURES TYPE: EP

ID: EP-PS-127

REPLACE: REV:15

REPLACE: REV:15

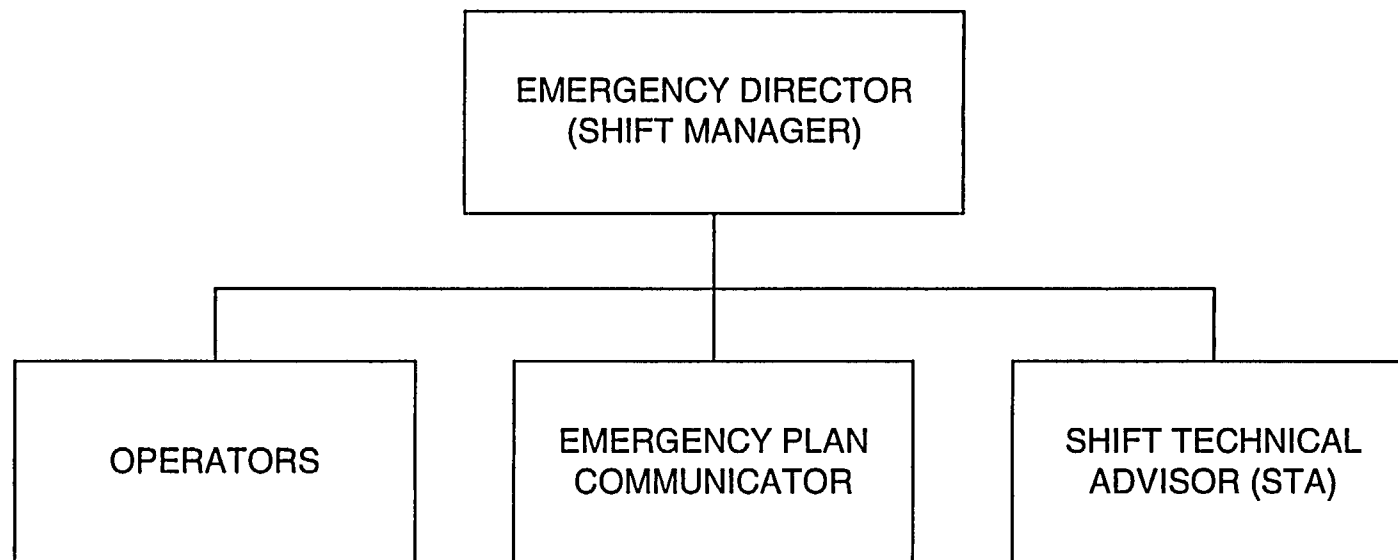
REMOVE: PCAF 2003-1096 REV: N/A

ADD: PCAF 2003-1096 REV: N/A

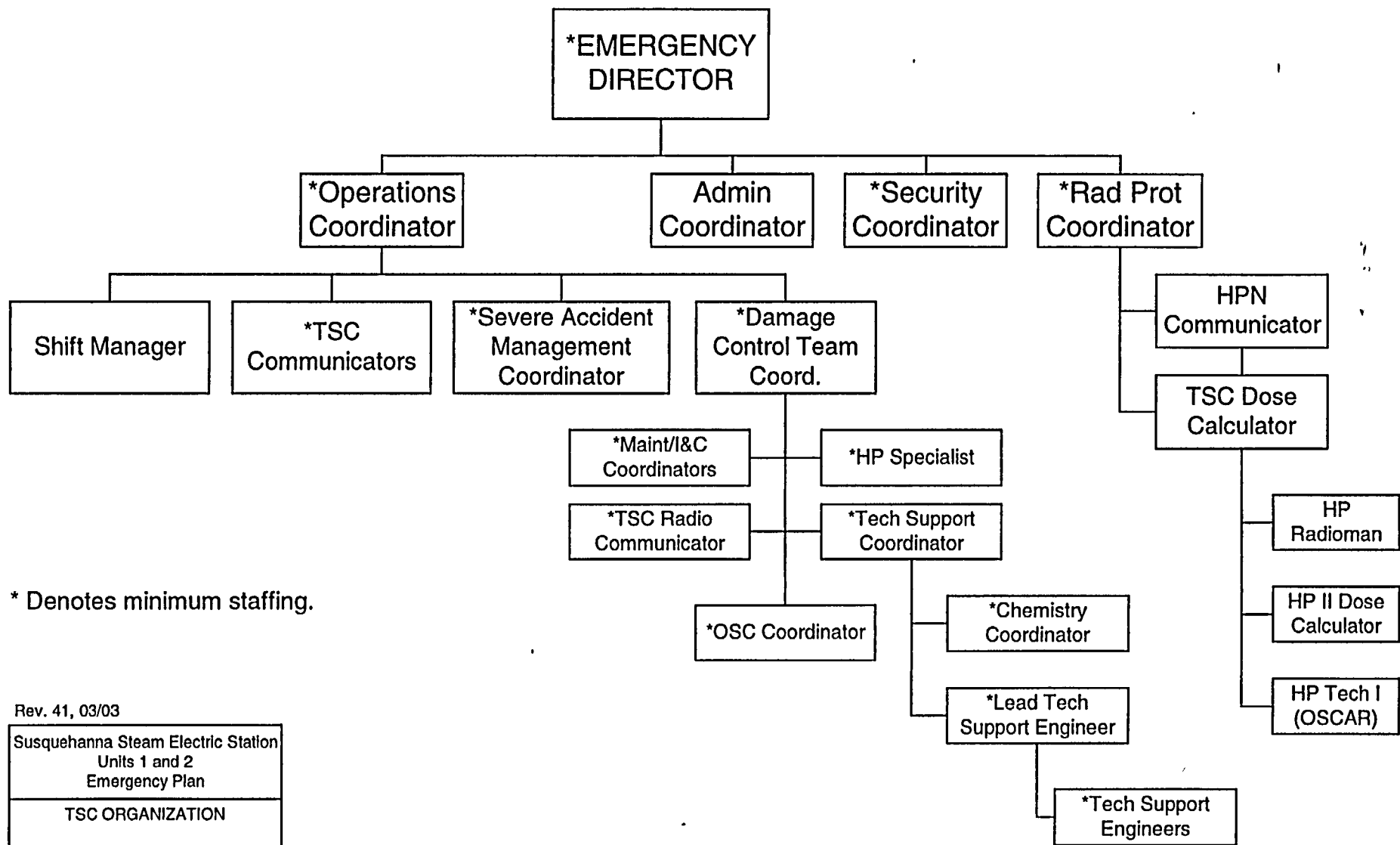
UPDATES FOR HARD COPY MANUALS WILL BE DISTRIBUTED  
WITHIN 5 DAYS IN ACCORDANCE WITH DEPARTMENT  
PROCEDURES. PLEASE MAKE ALL CHANGES AND  
ACKNOWLEDGE COMPLETE IN YOUR NIMS INBOX UPON  
RECEIPT OF HARD COPY. FOR ELECTRONIC MANUAL USERS,  
ELECTRONICALLY REVIEW THE APPROPRIATE DOCUMENTS AND  
ACKNOWLEDGE COMPLETE IN YOUR NIMS INBOX.

A045

## **EMERGENCY ORGANIZATION CONTROL ROOM**



## TSC ORGANIZATION



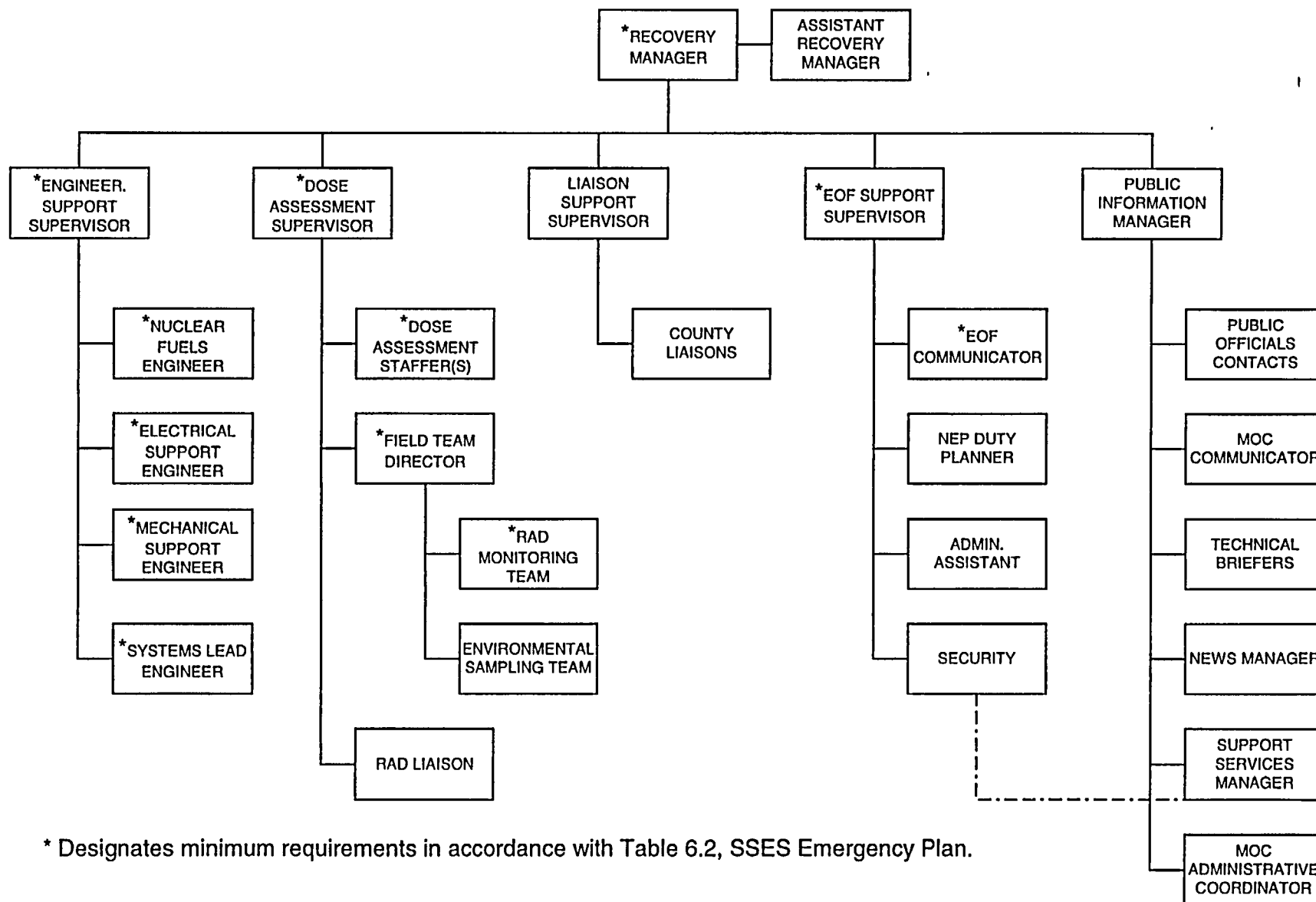
Rev. 41, 03/03

Susquehanna Steam Electric Station  
Units 1 and 2  
Emergency Plan

TSC ORGANIZATION

FIGURE 6 2

## EOF ORGANIZATION



\* Designates minimum requirements in accordance with Table 6.2, SSES Emergency Plan.