

MANUAL HARD COPY DISTRIBUTION

DOCUMENT TRANSMITTAL 2003-20032

USER INFORMATION:

~~GERLACH*ROSE M~~ EMPL#:28401 CA#: 0363
~~Address: NUCSA2~~
~~Phone#: 254-3194~~

TRANSMITTAL INFORMATION:

TO: ~~GERLACH*ROSE-M~~ 04/17/2003
LOCATION: DOCUMENT CONTROL DESK
FROM: NUCLEAR RECORDS DOCUMENT CONTROL CENTER
(NUCSA-2)
THE FOLLOWING CHANGES HAVE OCCURRED TO THE HARDCOPY
OR ELECTRONIC MANUAL ASSIGNED TO YOU:

133 - 133 - SEVERE ACCIDENT MANAGEMENT COORDINATOR
EMERGENCY PLAN-POSITION SPECIFIC PROCEDURE

REMOVE MANUAL TABLE OF CONTENTS DATE: 03/06/2003

ADD MANUAL TABLE OF CONTENTS DATE: 04/16/2003

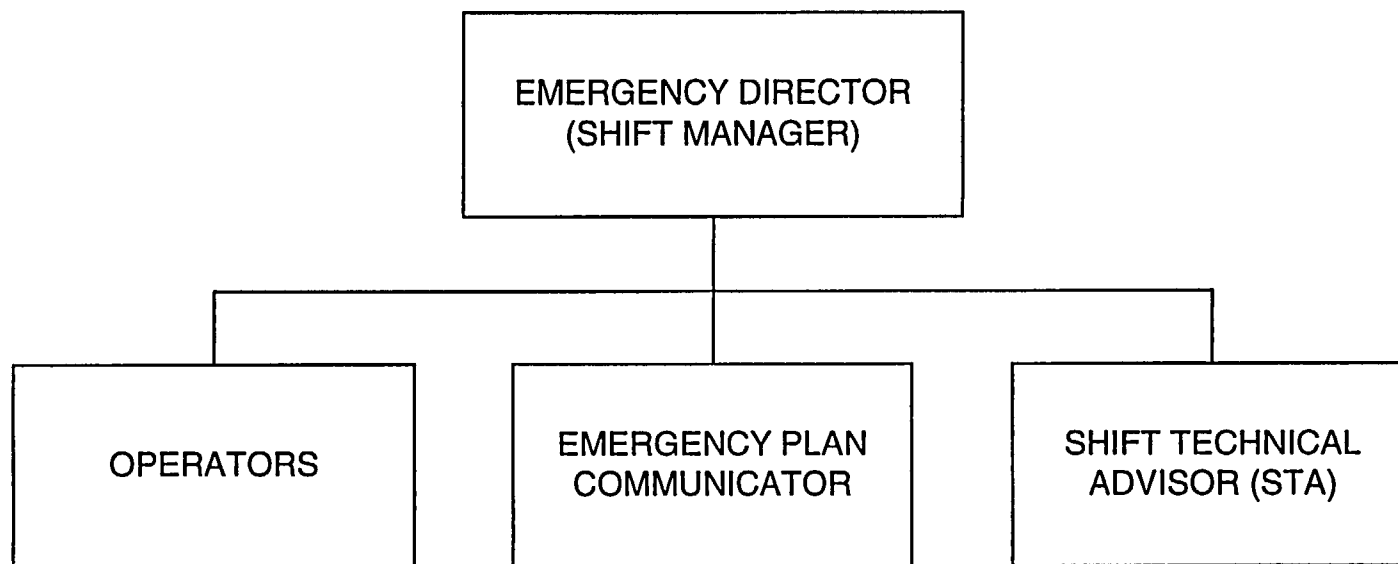
CATEGORY: PROCEDURES TYPE: EP
ID: EP-PS-133
REPLACE: REV:2

REPLACE: REV:2

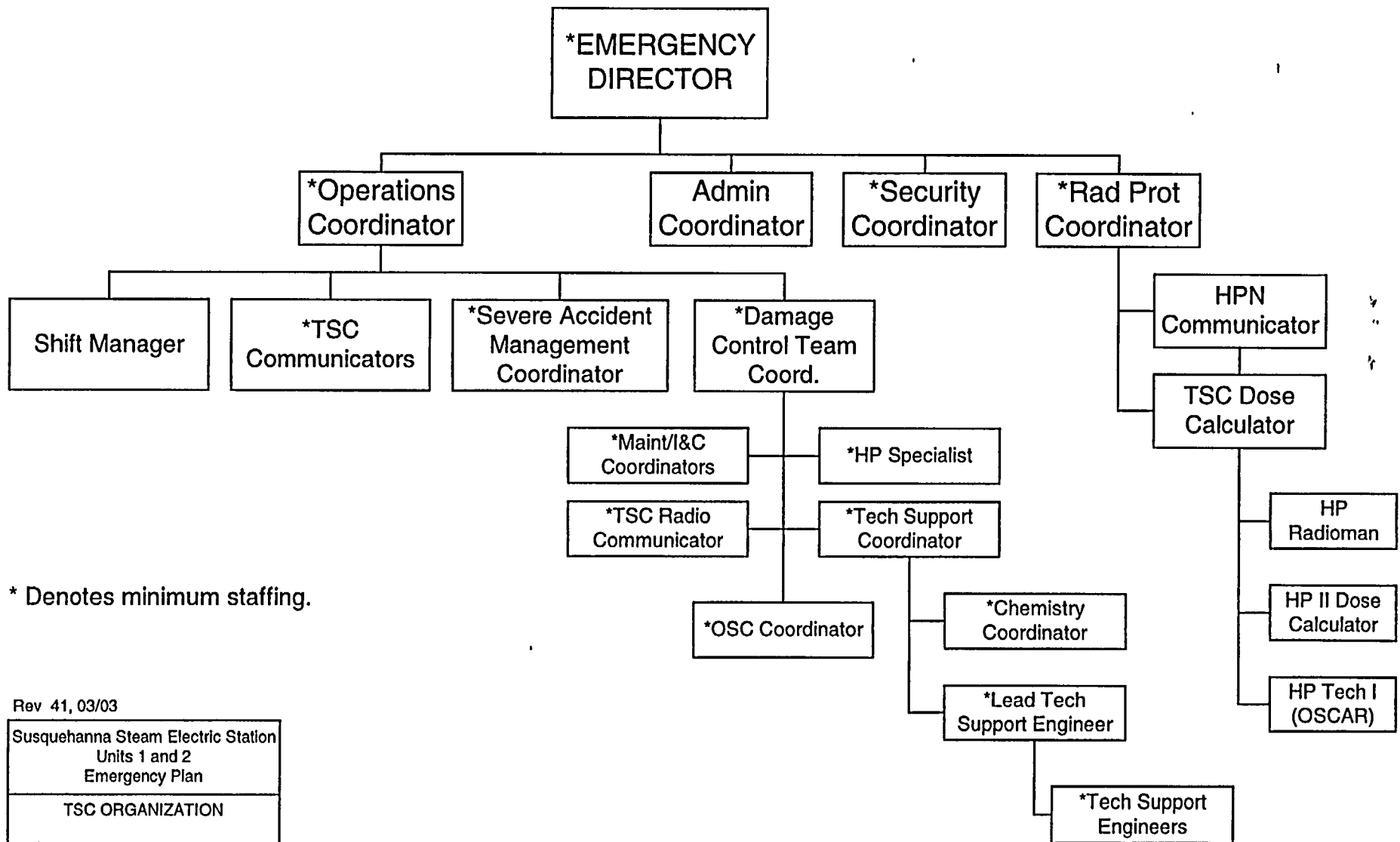
UPDATES FOR HARD COPY MANUALS WILL BE DISTRIBUTED
WITHIN 5 DAYS IN ACCORDANCE WITH DEPARTMENT
PROCEDURES. PLEASE MAKE ALL CHANGES AND
ACKNOWLEDGE COMPLETE IN YOUR NIMS INBOX UPON
RECEIPT OF HARD COPY. FOR ELECTRONIC MANUAL USERS,
ELECTRONICALLY REVIEW THE APPROPRIATE DOCUMENTS AND
ACKNOWLEDGE COMPLETE IN YOUR NIMS INBOX.

A045

EMERGENCY ORGANIZATION CONTROL ROOM



TSC ORGANIZATION



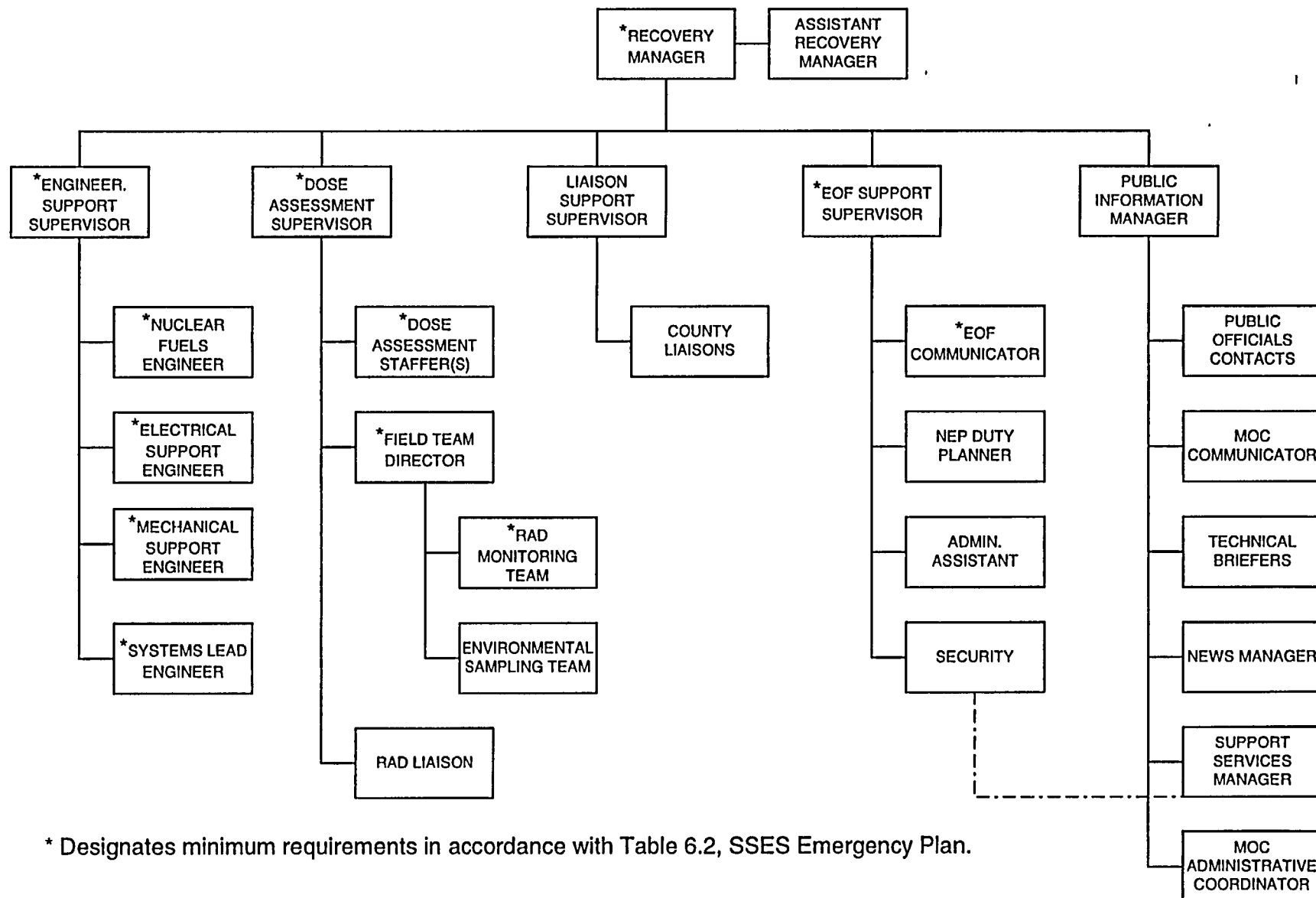
Rev 41, 03/03

Susquehanna Steam Electric Station
Units 1 and 2
Emergency Plan

TSC ORGANIZATION

FIGURE 6.2

EOF ORGANIZATION



* Designates minimum requirements in accordance with Table 6.2, SSES Emergency Plan.