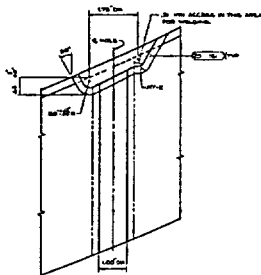
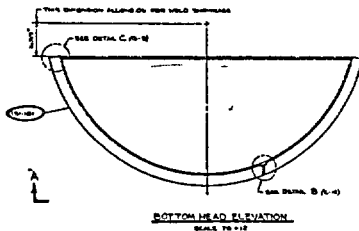
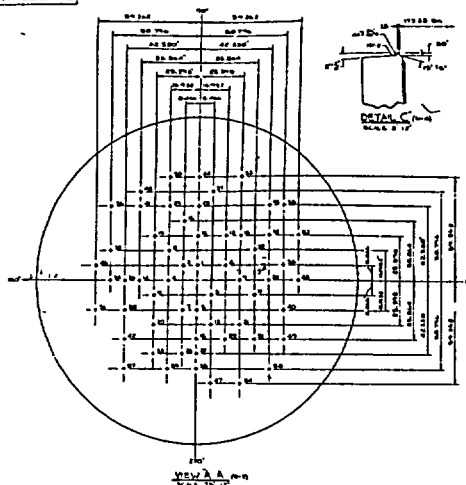


From: "Albon Harrison" <awharrison@stpegs.com>
To: <Nfo@nrc.gov>
Date: 4/17/03 10:49AM
Subject: BMI Drawings

Wayne Harrison
STPNOC Licensing
361-972-7298
pager 0594
awharrison@stpegs.com



DETAIL B (7-5)

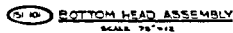
UNITS 1 SPIN REPORT
STATUS FOR INFORMATION ONLY
CERTIFICATION LTR NO ST-WN HL-1018
AUTHORITY A F PARKER
ENGR, LTR, NO. EP/SR 32 9c

DISTRIBUTION TO:	FOR REVIEW	NO.
1. MECHANICAL		
2. BALANCE OF PLANT		
3. BOILER/HESS		
4. PLANT UTILITIES		
5. PLANT REGION		
6. CONTROL SYSTEMS		
7. ELECTRICAL		
8. PIPING		
9. CONDUIT		
10. MISC		
11. PAINTING & COATINGS		
12. CIVIL/STRUCTURAL		
13. NUCLEAR		
14. SAFETY		
15. ARCHITECTURAL		
16. STARTUP		
17. CONSTRUCTION		
18. NOT REC'D BY ENGINE		
19. CLIENT		

IDENTIFY TYPE OF THIS DOCUMENT
 25-PLANT-27N ACTIONARY MEMO
 PENETRATIONS

Pkg #873

Wednesday August 18 1982



DETAIL "A" (c. 8)
2000 2000

UNITS 1 SPIN RECAP
STATUS FOR INFORMATION ONLY
CERTIFICATION LTR NO ST MW-NL-1818
AUTHORITY A * PARKER
ENGR. LTR. NO EP/SA 32198

8 IN-PROCESS ULTRASONIC INSPECTION SHALL BE EMPLOYED

[illegible]

GENERAL NOTES		REFERENCE DRAWINGS	
1. ALL DRAWINGS TO BE AS NOTED UNLESS OTHERWISE NOTED AND A MINIMUM THREE PAGES OF AS UNLESS NOTED.	NO.	TITLE	DRAWING NO.
	1	PRO-155 SPECIFICATION	811075-A-000
	2	BOITCH HEAD JOINT	811075-A-001
	3	BOITCH HEAD JOINT	811075-A-002
	4	BOITCH HEAD PENETRATIONS	811075-A-003

WELD TABLE	
SYMBOLS AND DIMENSIONS SPECIFICATIONS	
1. GAGE PENETRATES TO VOLUME FILL - 100%	
2. ALL DIMENSIONS APPLY AT REPRESENTATIVE TEMP. OF 60° F	
3. ALL DIMENSIONS ARE MEASURED TO CENTER OF LINE OR CENTER OF FACE FOR PENETRATIONS	
4. HAZARD SYMBOLS VIT - NONE APPLICABLE TO THIS DRAFT	
5. WELD ALL SHARP EDGES TO APPROX. .03" RADIUS OR CHAMFER	
6. ALL DIMENSIONS ARE TO CENTER OF LINE UNLESS OTHERWISE NOTED	
7. USED IN ALL PARTS INCLUDING BUSHES - NO DIMENSIONS MADE FOR FABRICATION OR WELD	
8. TOLERANCES ON .01" & .04" .015" & .010" RESPECTIVELY	
9. SEE MAP SHOWING .01" & .04" ON THIS MAP IN OTHER PLACES A HREF DRAFT ON THIS	
10. ALL DIMENSIONS ARE TO CENTER OF LINE UNLESS OTHERWISE NOTED	
11. DIMENSIONS APPLY TO DIMENSIONS TO WHICH DIMENSIONS APPLY	
12. DEVELOPED LENGTH IN ALL DIMENSIONS IS TO CENTER OF LINE	

[illegible]

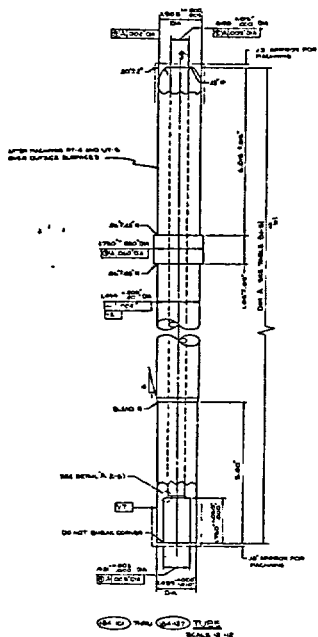
DISTRIBUTION TO	NO. REVERS	NO.
1 RECORDS		X
2 BALANCE OF PLANT		
3 MAINTENANCE		
4 PLANT UTILITIES		
5 PLANT DESIGN		
6 CONTROL SYSTEMS		
7 ELECTRICAL		
8 MECHANICAL		
9 EQUIPMENT		
10 Piping		
11 MATERIALS & COATINGS		
12 CIVIL/STRUCTURAL		
13 MECHANICAL		
14 MECHANICAL		
15 MECHANICAL		
16 MECHANICAL		
17 MECHANICAL		
18 MECHANICAL		
19 MECHANICAL		
20 MECHANICAL		
21 MECHANICAL		
22 MECHANICAL		
23 MECHANICAL		
24 MECHANICAL		
25 MECHANICAL		
26 MECHANICAL		
27 MECHANICAL		
28 MECHANICAL		
29 MECHANICAL		
30 MECHANICAL		
31 MECHANICAL		
32 MECHANICAL		
33 MECHANICAL		
34 MECHANICAL		
35 MECHANICAL		
36 MECHANICAL		
37 MECHANICAL		
38 MECHANICAL		
39 MECHANICAL		
40 MECHANICAL		
41 MECHANICAL		
42 MECHANICAL		
43 MECHANICAL		
44 MECHANICAL		
45 MECHANICAL		
46 MECHANICAL		
47 MECHANICAL		
48 MECHANICAL		
49 MECHANICAL		
50 MECHANICAL		
51 MECHANICAL		
52 MECHANICAL		
53 MECHANICAL		
54 MECHANICAL		
55 MECHANICAL		
56 MECHANICAL		
57 MECHANICAL		
58 MECHANICAL		
59 MECHANICAL		
60 MECHANICAL		
61 MECHANICAL		
62 MECHANICAL		
63 MECHANICAL		
64 MECHANICAL		
65 MECHANICAL		
66 MECHANICAL		
67 MECHANICAL		
68 MECHANICAL		
69 MECHANICAL		
70 MECHANICAL		
71 MECHANICAL		
72 MECHANICAL		
73 MECHANICAL		
74 MECHANICAL		
75 MECHANICAL		
76 MECHANICAL		
77 MECHANICAL		
78 MECHANICAL		
79 MECHANICAL		
80 MECHANICAL		
81 MECHANICAL		
82 MECHANICAL		
83 MECHANICAL		
84 MECHANICAL		
85 MECHANICAL		
86 MECHANICAL		
87 MECHANICAL		
88 MECHANICAL		
89 MECHANICAL		
90 MECHANICAL		
91 MECHANICAL		
92 MECHANICAL		
93 MECHANICAL		
94 MECHANICAL		
95 MECHANICAL		
96 MECHANICAL		
97 MECHANICAL		
98 MECHANICAL		
99 MECHANICAL		
100 MECHANICAL		

IDENTIFY AND FILE IN THIS DOCUMENT
REFRIG - RLV
BOTTOM HEAD WELDED
ASSEMBLY
 PKG#873

[illegible]

16X

12 14.



MC NO	Sum A
04 00	27.00
04 01	22.01
04 02	27.02
04 03	27.03
04 04	27.04
04 05	27.05
04 06	27.06
04 07	27.07
04 08	27.08
04 09	27.09
04 10	27.10
04 11	27.11
04 12	27.12
04 13	27.13
04 14	27.14
04 15	27.15
04 16	27.16
04 17	27.17
04 18	27.18
04 19	27.19
04 20	27.20
04 21	27.21
04 22	27.22
04 23	27.23
04 24	27.24
04 25	27.25
04 26	27.26
04 27	27.27
04 28	27.28
04 29	27.29
04 30	27.30
04 31	27.31
04 32	27.32
04 33	27.33
04 34	27.34
04 35	27.35
04 36	27.36
04 37	27.37
04 38	27.38
04 39	27.39
04 40	27.40
04 41	27.41
04 42	27.42
04 43	27.43
04 44	27.44
04 45	27.45
04 46	27.46
04 47	27.47
04 48	27.48
04 49	27.49
04 50	27.50
04 51	27.51
04 52	27.52
04 53	27.53
04 54	27.54
04 55	27.55
04 56	27.56
04 57	27.57
04 58	27.58
04 59	27.59
04 60	27.60
04 61	27.61
04 62	27.62
04 63	27.63
04 64	27.64
04 65	27.65
04 66	27.66
04 67	27.67
04 68	27.68
04 69	27.69
04 70	27.70
04 71	27.71
04 72	27.72
04 73	27.73
04 74	27.74
04 75	27.75
04 76	27.76
04 77	27.77
04 78	27.78
04 79	27.79
04 80	27.80
04 81	27.81
04 82	27.82
04 83	27.83
04 84	27.84
04 85	27.85
04 86	27.86
04 87	27.87
04 88	27.88
04 89	27.89
04 90	27.90
04 91	27.91
04 92	27.92
04 93	27.93
04 94	27.94
04 95	27.95
04 96	27.96
04 97	27.97
04 98	27.98
04 99	27.99
05 00	28.00

SOUTH TEXAS PROJECT
UNITS 1 SWM RCPGRV
STATUS FOR INFORMATION ONLY
CERTIFICATION LTR NO ST WH PL-1818
AUTHORITY A F PARKER
ENGR. LTR NO EP/SA-32188

MATERIAL NOTES

A. REPRESENTED BY 66 PURCHASES (SPL. SUPPLIES, T1) AND REVENUE (T2)

DATE	DESCRIPTION	AMOUNT	CHECK NO.	REMARKS
10-1-71	10-1-71	10-1-71		
10-2-71	10-2-71	10-2-71		
10-3-71	10-3-71	10-3-71		
10-4-71	10-4-71	10-4-71		
10-5-71	10-5-71	10-5-71		
10-6-71	10-6-71	10-6-71		
10-7-71	10-7-71	10-7-71		
10-8-71	10-8-71	10-8-71		
10-9-71	10-9-71	10-9-71		
10-10-71	10-10-71	10-10-71		
10-11-71	10-11-71	10-11-71		
10-12-71	10-12-71	10-12-71		
10-13-71	10-13-71	10-13-71		
10-14-71	10-14-71	10-14-71		
10-15-71	10-15-71	10-15-71		
10-16-71	10-16-71	10-16-71		
10-17-71	10-17-71	10-17-71		
10-18-71	10-18-71	10-18-71		
10-19-71	10-19-71	10-19-71		
10-20-71	10-20-71	10-20-71		
10-21-71	10-21-71	10-21-71		
10-22-71	10-22-71	10-22-71		
10-23-71	10-23-71	10-23-71		
10-24-71	10-24-71	10-24-71		
10-25-71	10-25-71	10-25-71		
10-26-71	10-26-71	10-26-71		
10-27-71	10-27-71	10-27-71		
10-28-71	10-28-71	10-28-71		
10-29-71	10-29-71	10-29-71		
10-30-71	10-30-71	10-30-71		
10-31-71	10-31-71	10-31-71		
11-1-71	11-1-71	11-1-71		
11-2-71	11-2-71	11-2-71		
11-3-71	11-3-71	11-3-71		
11-4-71	11-4-71	11-4-71		
11-5-71	11-5-71	11-5-71		
11-6-71	11-6-71	11-6-71		
11-7-71	11-7-71	11-7-71		
11-8-71	11-8-71	11-8-71		
11-9-71	11-9-71	11-9-71		
11-10-71	11-10-71	11-10-71		
11-11-71	11-11-71	11-11-71		
11-12-71	11-12-71	11-12-71		
11-13-71	11-13-71	11-13-71		
11-14-71	11-14-71	11-14-71		
11-15-71	11-15-71	11-15-71		
11-16-71	11-16-71	11-16-71		
11-17-71	11-17-71	11-17-71		
11-18-71	11-18-71	11-18-71		
11-19-71	11-19-71	11-19-71		
11-20-71	11-20-71	11-20-71		
11-21-71	11-21-71	11-21-71		
11-22-71	11-22-71	11-22-71		
11-23-71	11-23-71	11-23-71		
11-24-71	11-24-71	11-24-71		
11-25-71	11-25-71	11-25-71		
11-26-71	11-26-71	11-26-71		
11-27-71	11-27-71	11-27-71		
11-28-71	11-28-71	11-28-71		
11-29-71	11-29-71	11-29-71		
11-30-71	11-30-71	11-30-71		
12-1-71	12-1-71	12-1-71		
12-2-71	12-2-71	12-2-71		
12-3-71	12-3-71	12-3-71		
12-4-71	12-4-71	12-4-71		
12-5-71	12-5-71	12-5-71		
12-6-71	12-6-71	12-6-71		
12-7-71	12-7-71	12-7-71		
12-8-71	12-8-71	12-8-71		
12-9-71	12-9-71	12-9-71		
12-10-71	12-10-71	12-10-71		
12-11-71	12-11-71	12-11-71		
12-12-71	12-12-71	12-12-71		
12-13-71	12-13-71	12-13-71		
12-14-71	12-14-71	12-14-71		
12-15-71	12-15-71	12-15-71		
12-16-71	12-16-71	12-16-71		
12-17-71	12-17-71	12-17-71		
12-18-71	12-18-71	12-18-71		
12-19-71	12-19-71	12-19-71		
12-20-71	12-20-71	12-20-71		
12-21-71	12-21-71	12-21-71		
12-22-71	12-22-71	12-22-71		
12-23-71	12-23-71	12-23-71		
12-24-71	12-24-71	12-24-71		
12-25-71	12-25-71	12-25-71		
12-26-71	12-26-71	12-26-71		
12-27-71	12-27-71	12-27-71		
12-28-71	12-28-71	12-28-71		
12-29-71	12-29-71	12-29-71		
12-30-71	12-30-71	12-30-71		
12-31-71	12-31-71	12-31-71		
1-1-72	1-1-72	1-1-72		
1-2-72	1-2-72	1-2-72		
1-3-72	1-3-72	1-3-72		
1-4-72	1-4-72	1-4-72		
1-5-72	1-5-72	1-5-72		
1-6-72	1-6-72	1-6-72		
1-7-72	1-7-72	1-7-72		
1-8-72	1-8-72	1-8-72		
1-9-72	1-9-72	1-9-72		
1-10-72	1-10-72	1-10-72		
1-11-72	1-11-72	1-11-72		
1-12-72	1-12-72	1-12-72		
1-13-72	1-13-72	1-13-72		
1-14-72	1-14-72	1-14-72		
1-15-72	1-15-72	1-15-72		
1-16-72	1-16-72	1-16-72		
1-17-72	1-17-72	1-17-72		
1-18-72	1-18-72	1-18-72		
1-19-72	1-19-72	1-19-72		
1-20-72	1-20-72	1-20-72		
1-21-72	1-21-72	1-21-72		
1-22-72	1-22-72	1-22-72		
1-23-72	1-23-72	1-23-72		
1-24-72	1-24-72	1-24-72		
1-25-72	1-25-72	1-25-72		
1-26-72	1-26-72	1-26-72		
1-27-72	1-27-72	1-27-72		
1-28-72	1-28-72	1-28-72		
1-29-72	1-29-72	1-29-72		
1-30-72	1-30-72	1-30-72		
1-31-72	1-31-72	1-31-72		
2-1-72	2-1-72	2-1-72		
2-2-72	2-2-72	2-2-72		
2-3-72	2-3-72	2-3-72		
2-4-72	2-4-72	2-4-72		
2-5-72	2-5-72	2-5-72		
2-6-72	2-6-72	2-6-72		
2-7-72	2-7-72	2-7-72		
2-8-72	2-8-72	2-8-72		
2-9-72	2-9-72	2-9-72		
2-10-72	2-10-72	2-10-72		
2-11-72	2-11-72	2-11-72		
2-12-72	2-12-72	2-12-72		
2-13-72	2-13-72	2-13-72		
2-14-72	2-14-72	2-14-72		
2-15-72	2-15-72	2-15-72		
2-16-72	2-16-72	2-16-72		
2-17-72	2-17-72	2-17-72		
2-18-72	2-18-72	2-18-72		
2-19-72	2-19-72	2-19-72		
2-20-72	2-20-72	2-20-72		
2-21-72	2-21-72	2-21-72		
2-22-72	2-22-72	2-22-72		
2-23-72	2-23-72	2-23-72		
2-24-72	2-24-72	2-24-72		
2-25-72	2-25-72	2-25-72		
2-26-72	2-26-72	2-26-72		
2-27-72	2-27-72	2-27-72		
2-28-72	2-28-72	2-28-72		
2-29-72	2-29-72	2-29-72		
2-30-72	2-30-72	2-30-72		
2-31-72	2-31-72	2-31-72		
3-1-72	3-1-72	3-1-72		
3-2-72	3-2-72	3-2-72		
3-3-72	3-3-72	3-3-72		
3-4-72	3-4-72	3-4-72		
3-5-72	3-5-72	3-5-72		
3-6-72	3-6-72	3-6-72		
3-7-72	3-7-72	3-7-72		
3-8-72	3-8-72	3-8-72		
3-9-72	3-9-72	3-9-72		
3-10-72	3-10-72	3-10-72		
3-11-72	3-11-72	3-11-72		
3-12-72	3-12-72	3-12-72		
3-13-72	3-13-72	3-13-72		
3-14-72	3-14-72	3-14-72		
3-15-72	3-15-72	3-15-72		
3-16-72	3-16-72	3-16-72		
3-17-72	3-17-72	3-17-72		
3-18-72	3-18-72	3-18-72		
3-19-72	3-19-72	3-19-72		
3-20-72	3-20-72	3-20-72		
3-21-72	3-21-72	3-21-72		
3-22-72	3-22-72	3-22-72		
3-23-72	3-23-72	3-23-72		
3-24-72	3-24-72	3-24-72		
3-25-72	3-25-72	3-25-72		
3-26-72	3-26-72	3-26-72		
3-27-72	3-27-72	3-27-72		
3-28-72	3-28-72	3-28-72		
3-29-72	3-29-72	3-29-72		
3-30-72	3-30-72	3-30-72		
3-31-72	3-31-72	3-31-72		
4-1-72	4-1-72	4-1-72		
4-2-72	4-2-72	4-2-72		
4-3-72	4-3-72	4-3-72		
4-4-72	4-4-72	4-4-72		
4-5-72	4-5-72	4-5-72		
4-6-72	4-6-72	4-6-72		
4-7-72	4-7-72	4-7-72		
4-8-72	4-8-72	4-8-72		
4-9-72	4-9-72	4-9-72		
4-10-72	4-10-72	4-10-72		
4-11-72	4-11-72	4-11-72		
4-12-72	4-12-72	4-12-72		
4-13-72	4-13-72	4-13-72		
4-14-72	4-14-72	4-14-72		
4-15-72	4-15-72	4-15-72		
4-16-72	4-16-72	4-16-72		
4-17-72	4-17-72	4-17-72		
4-18-72	4-18-72	4-18-72		
4-19-72	4-19-72	4-19-72		
4-20-72	4-20-72	4-20-72		
4-21-72	4-21-72	4-21-72		
4-22-72	4-22-72	4-22-72		
4-23-72	4-23-72	4-23-72		
4-24-72	4-24-72	4-24-72		
4-25-72	4-25-72	4-25-72		
4-26-72	4-26-72	4-26-72		
4-27-72	4-27-72	4-27-72		
4-28-72	4-28-72	4-28-72		
4-29-72	4-29-72	4-29-72		
4-30-72	4-30-72	4-30-72		
4-31-72	4-31-72	4-31-72		
5-1-72	5-1-72	5-1-72		
5-2-72	5-2-72	5-2-72		
5-3-72	5-3-72	5-3-72		
5-4-72	5-4-72	5-4-72		
5-5-72	5-5-72	5-5-72		
5-6-72	5-6-72	5-6-72		
5-7-72	5-7-72	5-7-72		
5-8-72	5-8-72	5-8-72		
5-9-72	5-9-72	5-9-72		
5-10-72	5-10-72	5-10-72		
5-11-72	5-11-72	5-11-72		
5-12-72	5-12-72	5-12-72		
5-13-72	5-13-72	5-13-72		
5-14-72	5-14-72	5-14-72		
5-15-72	5-15-72	5-15-72		
5-16-72	5-16-72	5-16-72		
5-17-72	5-17-72	5-17-72		
5-18-72	5-18-72	5-18-72		
5-19-72	5-19-72	5-19-72		
5-20-72	5-20-72	5-20-72		
5-21-72	5-21-72	5-21-72		
5-22-72	5-22-72	5-22-72		
5-23-72	5-23-72	5-23-72		
5-24-72	5-24-72	5-24-72		
5-25-72	5-25-72	5-25-72		
5-26-72	5-26-72	5-26-72		
5-27-72	5-27-72	5-27-72		
5-28-72	5-28-72	5-28-72		
5-29-72	5-29-72	5-29-72		
5-30-72	5-30-72	5-30-72		
5-31-72	5-31-72	5-31-72		
6-1-72	6-1-72	6-1-72		
6-2-72	6-2-72	6-2-72		
6-3-72				

[illegible]

DESCRIPTION TO FOR REVIEW	INFO
1. MECHANICAL	
2. BALANCE OF PAYMENT	
3. SOLARHEAT	
4. PLANT UTILITIES	
5. PLANT DESIGN	
6. CONTROL SYSTEMS	
7. ELECTRICAL	
8. WIRING	
9. SOUNDING	
10. LIGHT	
11. PAINTING & COATINGS	
12. CIVIL/STRUCTURAL	
13. NUCLEAR	
14. STRESS	
15. ARCHITECTURAL	
16. START-UP	
17. CONSTRUCTION	
18. COST BUDGET OF ENERGY	
19. CLIENT	
IDENTIFYING TITLE OF THIS DOCUMENT	
RCRA-RV Bottom Head	
Knowledge Base	

[illegible]

Wednesday August 10 1982

12 14.5 16

Mail Envelope Properties (3E9EBEAC.2DF : 15 : 33503)

Subject: BMI Drawings
Creation Date: 4/17/03 10:43AM
From: "Albon Harrison" <awharrison@stpegs.com>

Created By: awharrison@stpegs.com

Recipients

nrc.gov

ARL_PO.ARL_DO

NFO (Neil O'Keefe)

Post Office

ARL_PO.ARL_DO

Route

nrc.gov

Files

MESSAGE

114.tif

114_551558_1.tif

114_551558_2.tif

114_551558_3.tif

114_551558_4.tif

Mime.822

Size

82

379122

356134

529462

371352

790764

3322811

Date & Time

04/17/03 10:43AM

Options

Expiration Date:

None

Priority:

Standard

Reply Requested:

No

Return Notification:

None

Concealed Subject:

No

Security:

Standard