

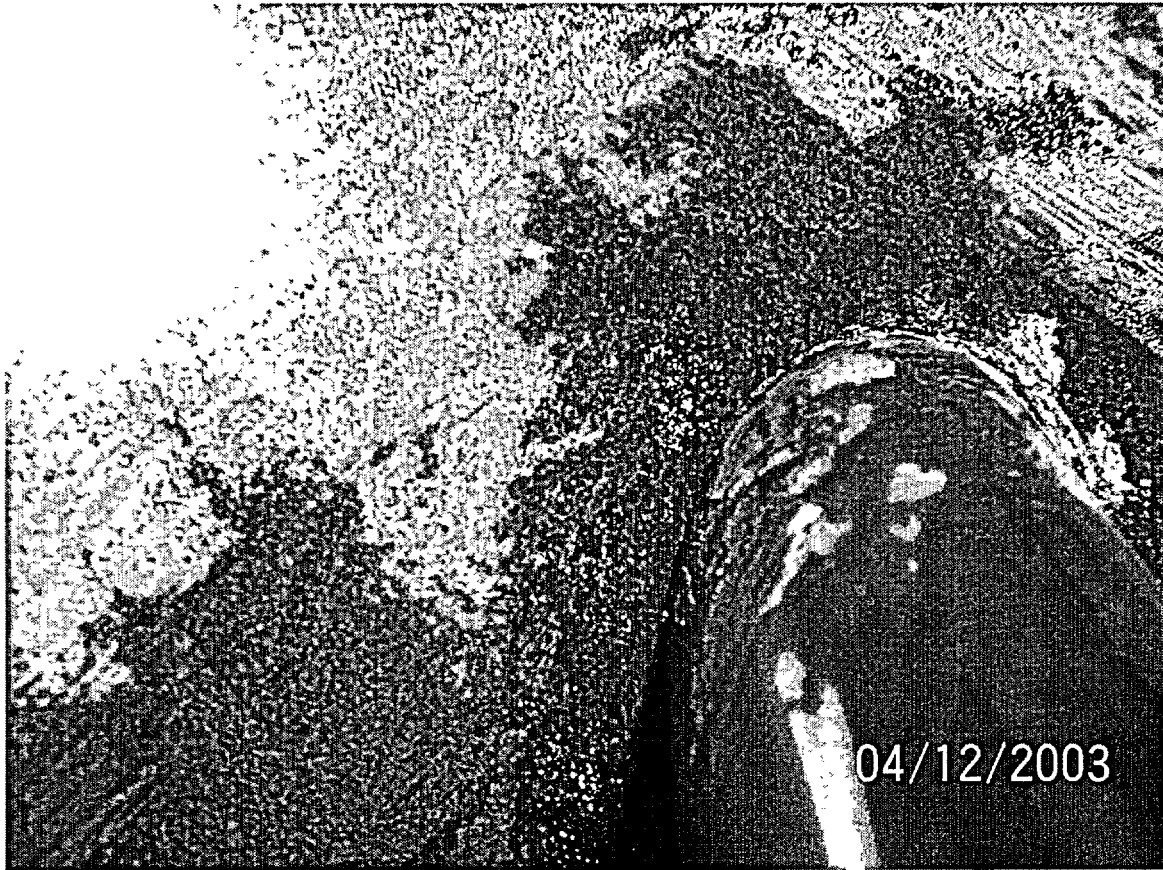
From: "James Heil" <jcheil@stpegs.com>
To: <glg@nrc.gov>, "Richard Gangluff"
<ragangluff.GWPO_NGEN.GWDOM_STP@stpegs.com>, "Steven Thomas"
<sethomas.GWPO_NENG.GWDOM_STP@stpegs.com>, "Will Jump"
<wjump.GWPO_NGEN.GWDOM_STP@stpegs.com>
Date: 4/14/03 9:39AM
Subject: Fwd: Photos of Under-Vessel Inspection

Attached are photo composites of Penetration 46 and 1 indications.
Please contact me if you have trouble viewing these.

James Heil
Systems Engineering
NSSS Section
(361) 972-7549,
Pager 1386 (Offsite access: (361) 972-8770)
jcheil@stpegs.com

CC: "Scott Head" <smhead.GWPO_NASSUR.GWDOM_STP@stpegs.com>,
"Ulhas Patil" <uspatil.GWPO_NENG.GWDOM_STP@stpegs.com>, "William Humble, Jr."
<whhumble.GWPO_NENG.GWDOM_STP@stpegs.com>





Mail Envelope Properties

(3E9AB8F5.76A : 9 : 42858)

Subject: Fwd: Photos of Under-Vessel Inspection
Creation Date: 4/14/03 9:28AM
From: "James Heil" <jcheil@stpegs.com>

Created By: jcheil@stpegs.com

Recipients

nrc.gov

ARL_PO.ARL_DO

GLG (Gilbert Guerra)

stpegs.com

whhumble.GWPO_NENG.GWDOM_STP CC (William H

uspatil.GWPO_NENG.GWDOM_STP CC (Ulhas Pati

smhead.GWPO_NASSUR.GWDOM_STP CC (Scott Hea

wjump.GWPO_NGEN.GWDOM_STP (Will Jump)

sethomas.GWPO_NENG.GWDOM_STP (Steven Thom

ragangluff.GWPO_NGEN.GWDOM_STP (Richard G

Post Office

ARL_PO.ARL_DO

Route

nrc.gov

stpegs.com

Files

MESSAGE

Mail

Pen 46 Composite.doc

Pen 1 Composite.ppt

Mime.822

Size

248

1533440

1808384

4576962

Date & Time

04/14/03 09:28AM

Options

Expiration Date:

None

Priority:

Standard

Reply Requested:

No

Return Notification:

None

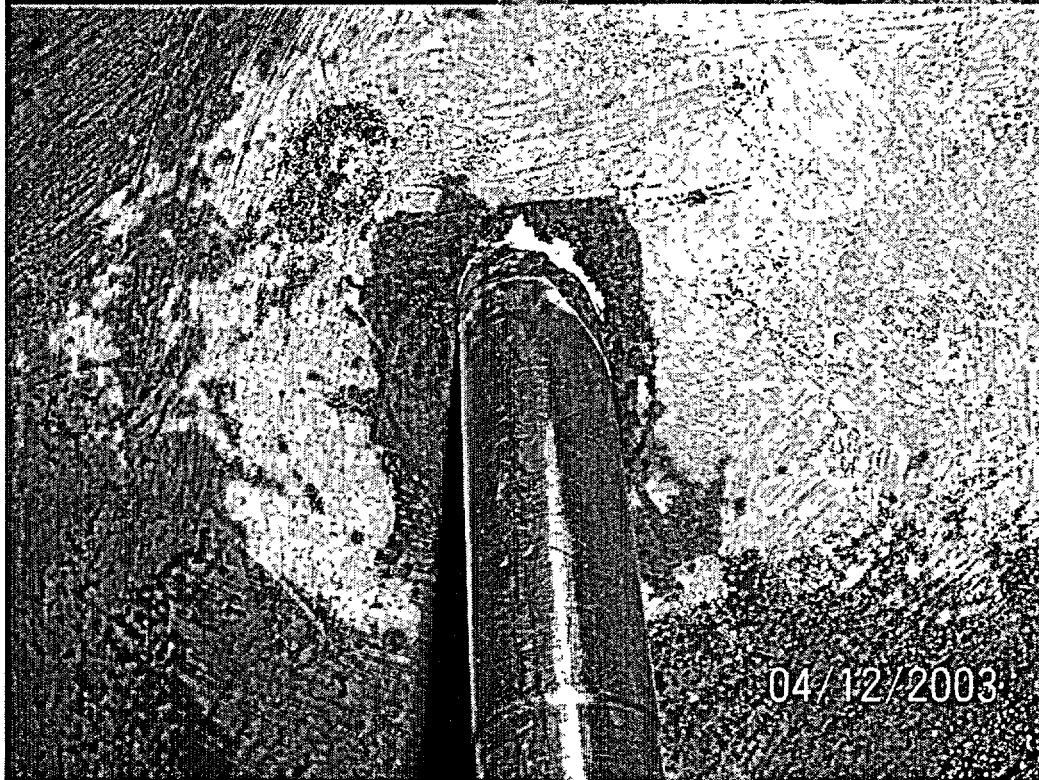
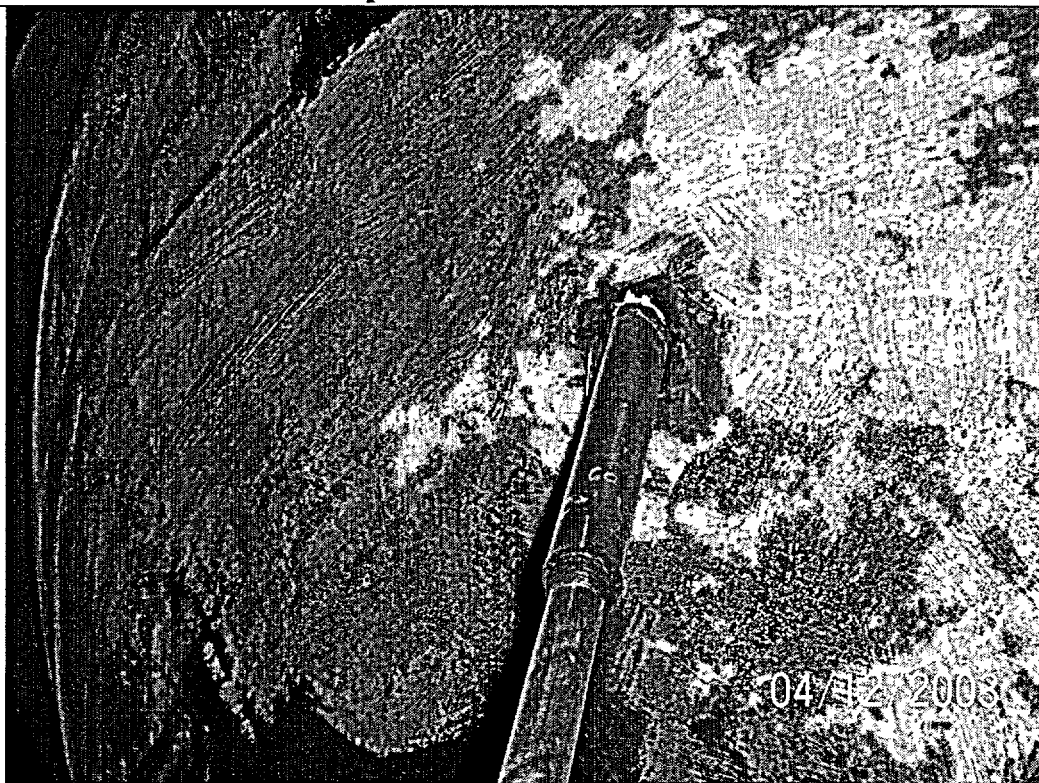
Concealed Subject:

No

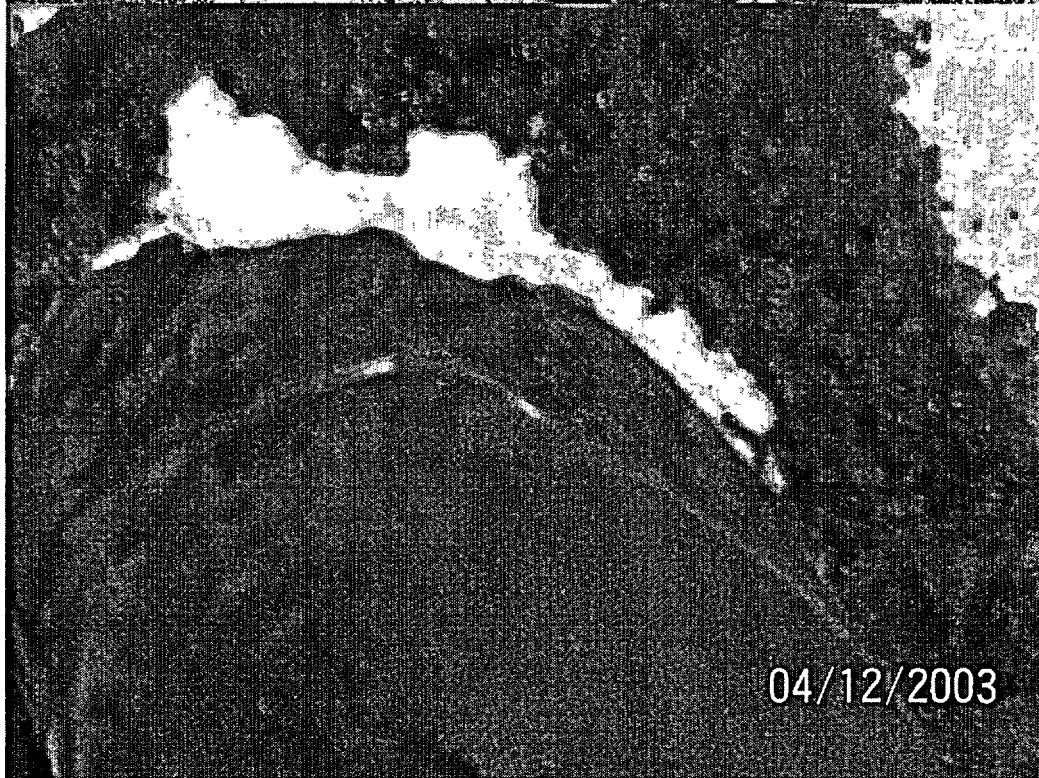
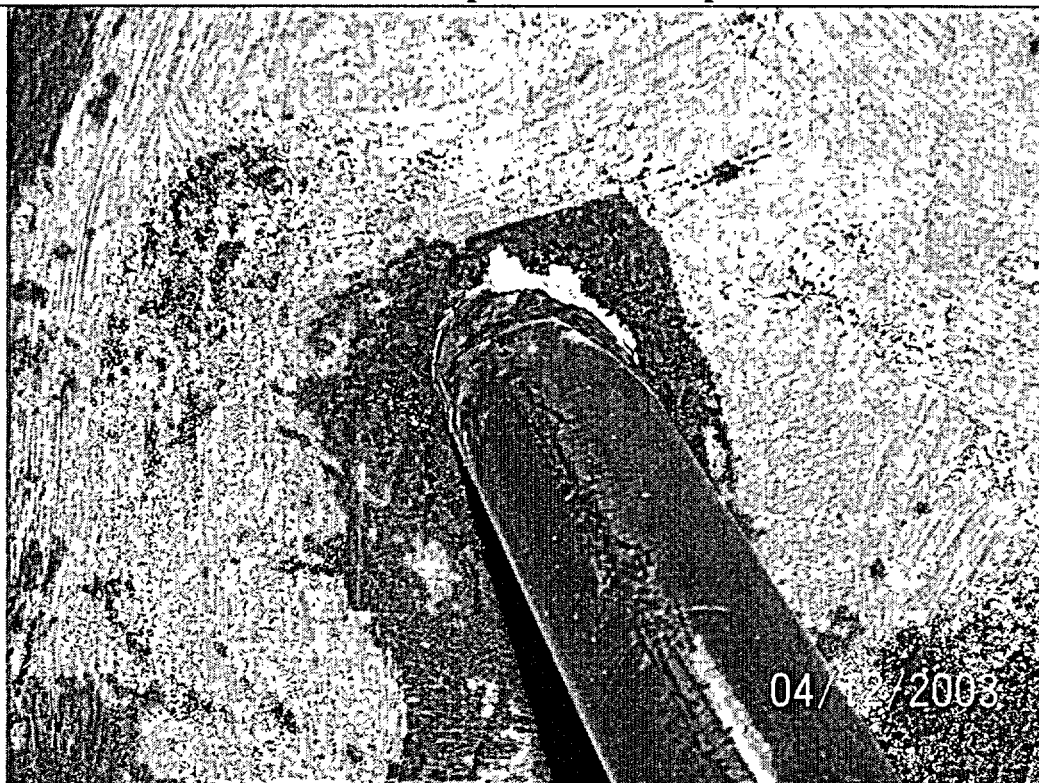
Security:

Standard

Unit 1 BMI Penetration 46
Initial Inspection – Attachment to 03-6248



Unit 1 BMI Penetration 46
Initial Inspection – Closeups



**Unit 1 BMI Penetration 46
Initial Inspection – Closeups**



**Unit 1 BMI Penetration 46
After Obtaining Samples**

