

AP1000 Seismic and Structural Review April 2 - 4, 2003

Effect of Basemat Lift-off on Floor Response Spectra

**Richard Orr, Westinghouse
Yoshi Takeuchi, Obayashi**



Slide 1

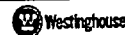


Lift-off Analysis of Basemat

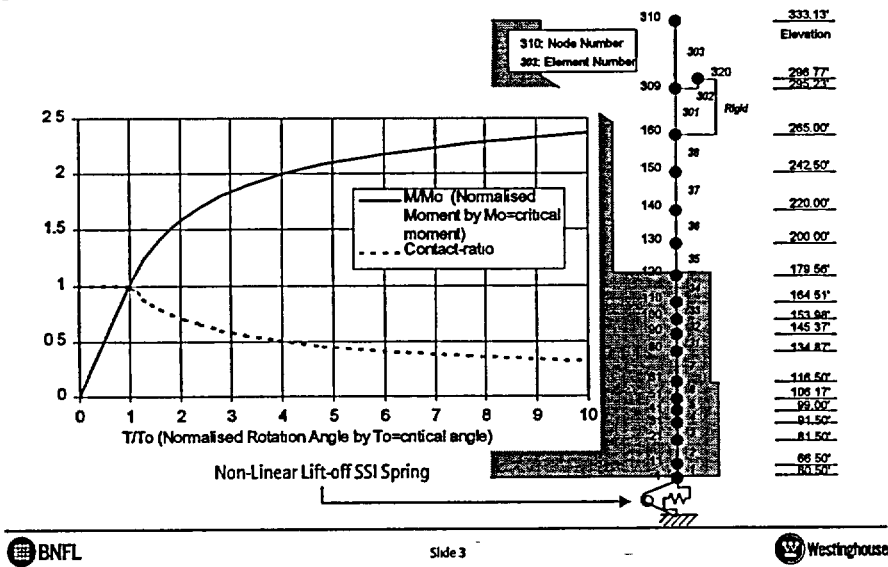
- **Seismic analyses of AP1000 show potential Lift-off of basemat**
- **Safe Shutdown Earthquake (SSE) level and larger level (1.5 SSE) in Horizontal EW direction**
- **AP1000 non-linear analyses on simplified stick model considering SSI spring with basemat effect of lift-off using "Technical Guidelines for Aseismic Design of Nuclear Power Plants (Translation of JEAG 4601-1991)"**
- **Lift-off initiates at critical moment M_o , and critical angle θ_o**



Slide 2



Simplified NI Stick Model



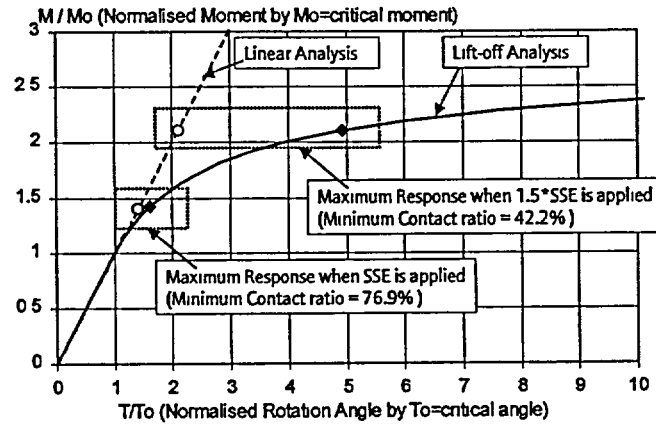
Analysis Result

ZPA (G) at Top of SB (Node 310)		
	1.0*SSE	1.5*SSE
Linear	1.7011	2.5517
Lift-off	1.7016	2.5434
Rate (Lift-off / Linear)	1.0003	0.9967

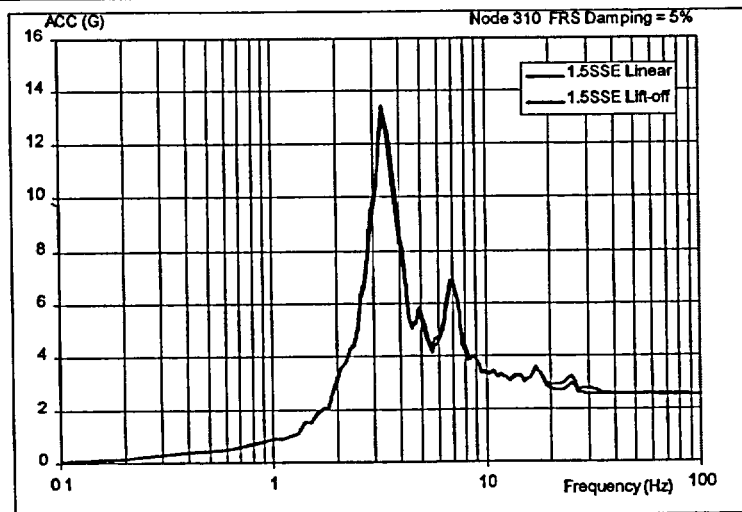
Rotational Angle at Basemat		
	1.0*SSE	1.5*SSE
Linear	9.872E-06	1.481E-05
Lift-off	1.158E-05	3.838E-05
Rate (Lift-off / Linear)	1.173	2.592

Note: 1.0E-05 corresponds to 0.018" in 150' width of Basemat

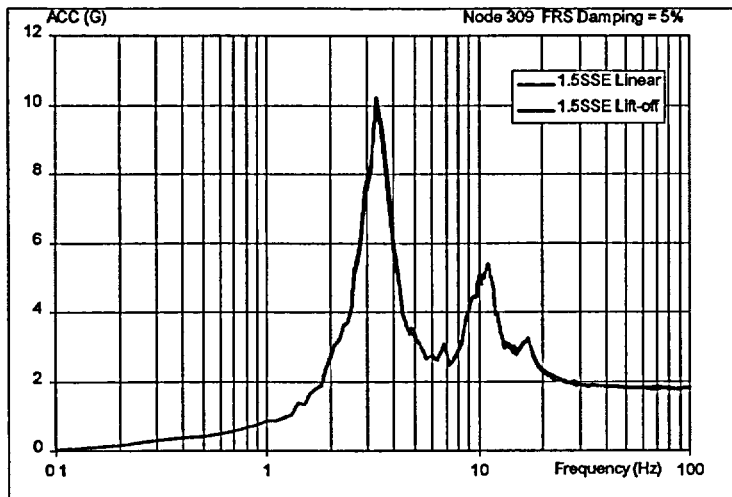
Analysis Result : Soil Spring Response



Comparison of Response Spectra (Node 310)



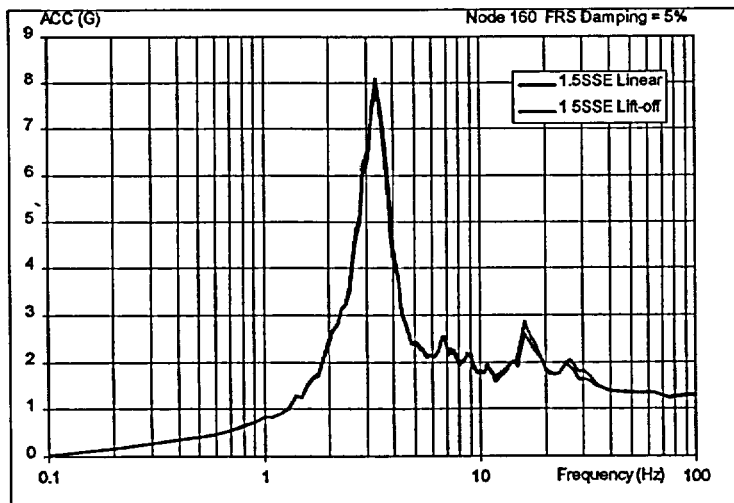
Comparison of Response Spectra (Node 309)



Slide 7 --



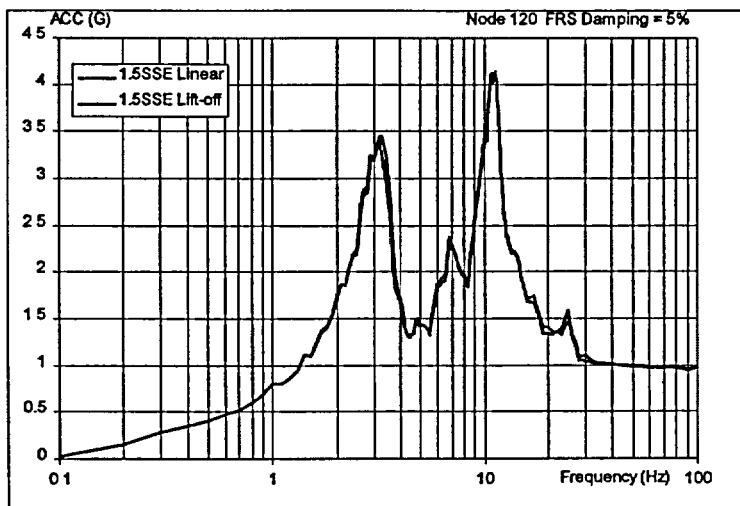
Comparison of Response Spectra (Node 160)



Slide 8



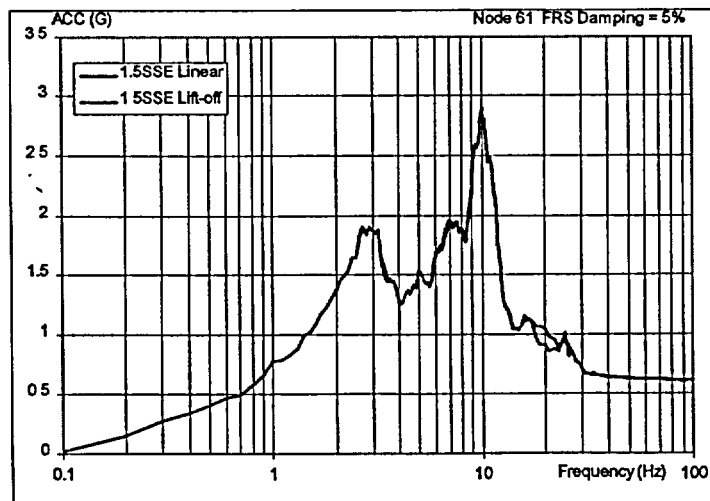
Comparison of Response Spectra (Node 120)



Slide 9



Comparison of Response Spectra (Node 61)



Slide 10



AP1000 Seismic and Structural Review

April 2 - 4, 2003

Lift-off FEM Analysis of Basemat

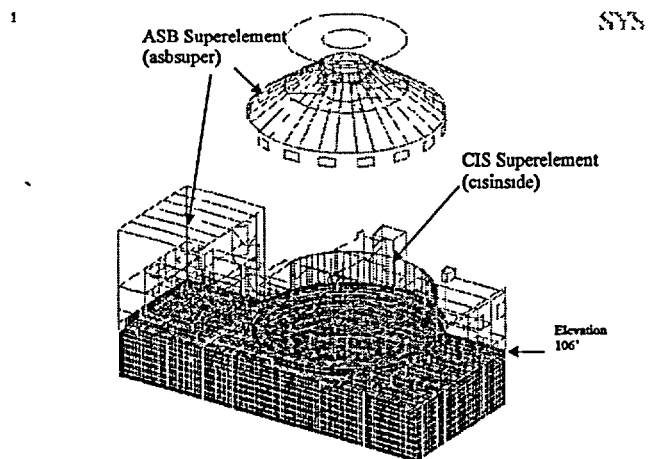
Richard Orr, Westinghouse
Yoshi Takeuchi, Obayashi



Slide 11



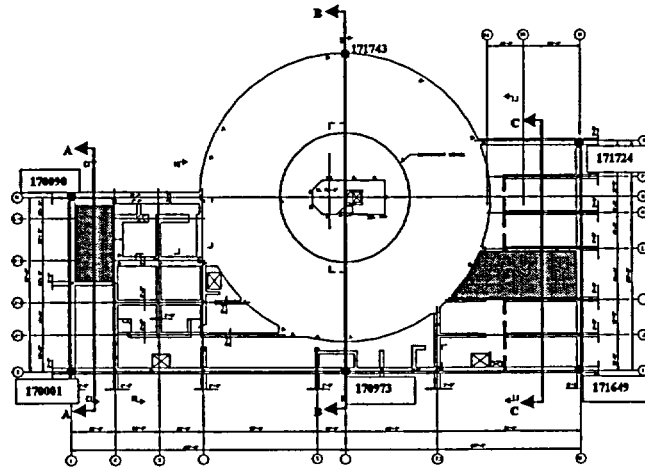
FEM Analysis Model



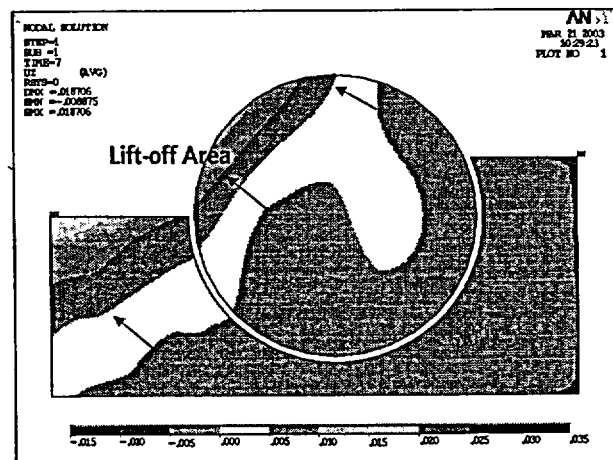
Slide 12



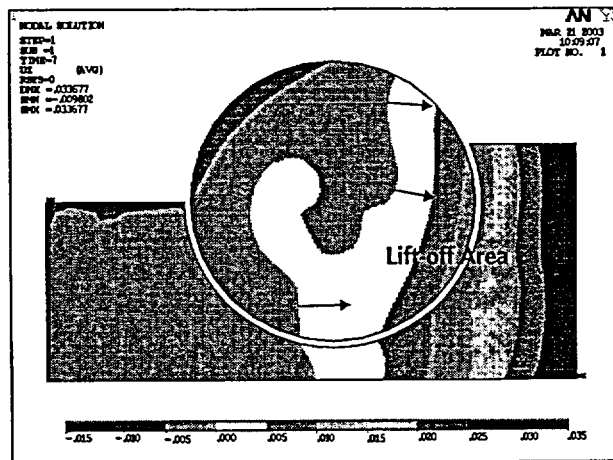
Plan View of Basemat



LC4 Vertical Displacement



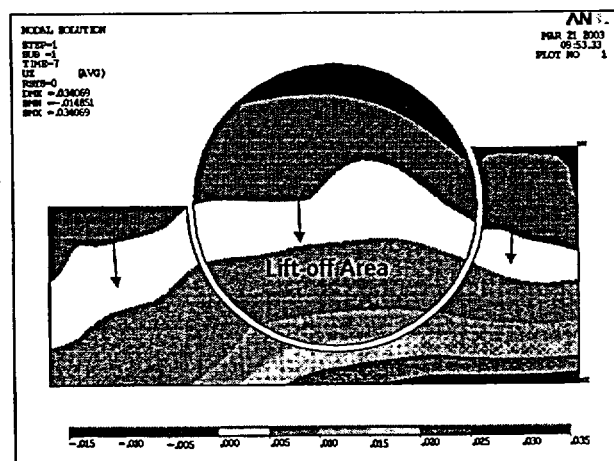
LC6 Vertical Displacement



Slide 15



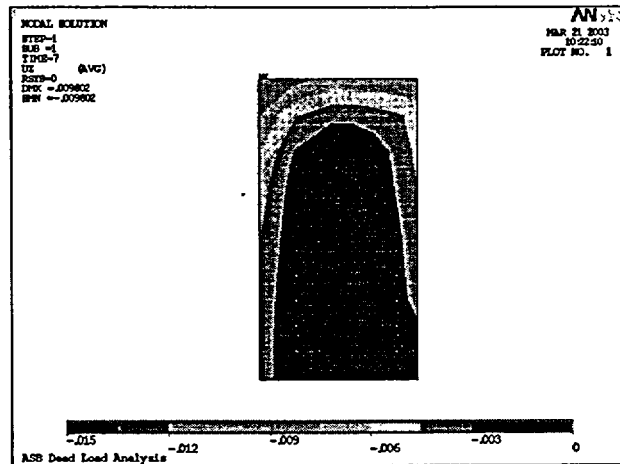
LC10 Vertical Displacement



Slide 16



LC6 Vertical Displacement in South-East Area of Basemat



LC4 Vertical Displacement in North-Mid Area of Basemat

