

Southwest Geophysical Services, Inc.

GEOPHYSICAL WELL LOG:

Gamma Ray
Caliper
S.P.
SINGLE PT. RESISTIVITY

PERM. DATUM: GROUND LEVEL

LOG MEASURED FROM: G. L.

ELEVATION: 6986.8

OTHER SERVICES:

COMPANY: United Nuclear Corp.

PROJECT/FIELD: Church Rock

WELL: PB3

LOCATION: SEC: 36

T: 17

R: 16

NORTH=

EAST=

COUNTY: McKinley

STATE: New Mexico

ELEVATION KB:

DF:

GL: 6986.8

COMPANY: United Nuclear Corp.
WELL: PB3

	RUN NO.1:		RUN NO.1:
DATE	6/21/2002	FLUID LEVEL	24 ft.
DEPTH DRILLER	199 ft.	FLUID NATURE	Fresh Water
DEPTH LOGGER	199 ft.	FLUID VISCOSITY	
BOTTOM LOGGED	198 ft.	FL. RESISTIVITY	
TOP LOGGED INT.	Surface	FL. RES. @ B.H.T.	
CASING LEVEL	None	CIRCULATION TEMP.	
CASING SIZE		BOT HOLE TEMP.	
CASING SIZE		TOOL #	Combo
BIT SIZE	9-7/8"	LOGGED BY:	Q.Frost
BIT SIZE		WITNESSED BY:	L.Bush

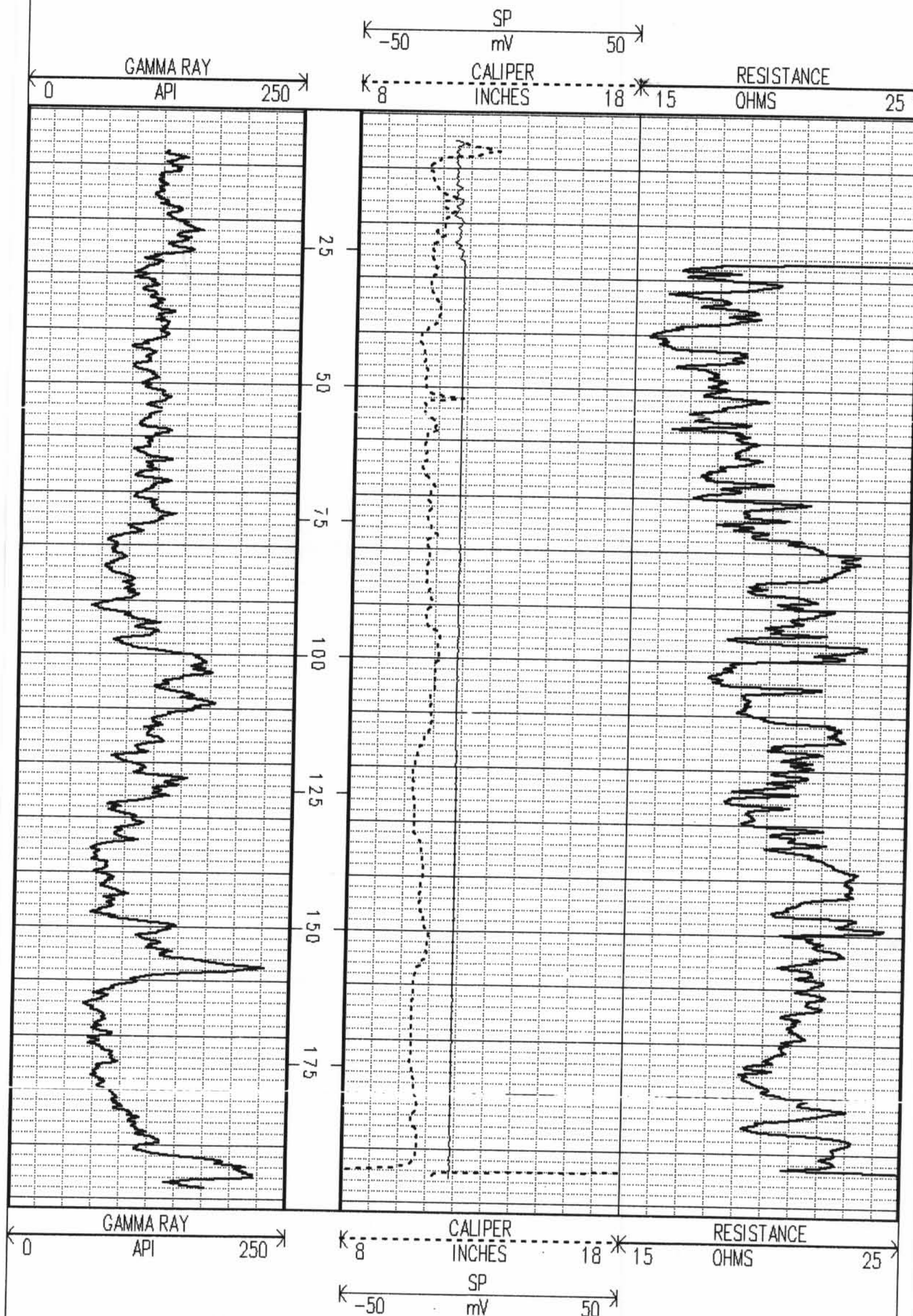
REMARKS:

D-3

THANK YOU

(\acq\ubpb3.cel)

SOUTHWEST GEOPHYSICAL SERVICES, INC.



(\acq\ubpb3.cel)

SOUTHWEST GEOPHYSICAL SERVICES, INC.