

"FISH STUDIES"



FPL
6451 South Ocean Dr.
Jensen Beach, Fl. 34957

December 12, 2001

Ms. Lisa Gregg
Florida Fish & Wildlife Conservation Commission
620 South Meridian St.
Box MF-MFM
Tallahassee, FL 32399-1600

Dear Ms. Gregg:

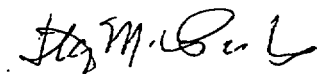
Enclosed is the application renewal for my scientific collecting permit # 01S-018 that will expire on 1/26/02. The permit activities will remain the same as last year. Also enclosed is a copy of the existing permit, a species list of fish removed from the intake canal, a diagram of the traps used, and an overview photo of the plant canal systems.

The annual report will be submitted at this time. The report covers from December 6, 2000 to December 11, 2001. There were a total of 77 pueruli or first stage lobsters removed using the Witham Collectors. The fish removed from the canal system totaled 501. Most were measured and released, others were taken by permitted aquariums and some were displayed in our marine education facility.

The project commenced in 1993, the total number of fish released to date is 6990. Of these 3690 have been tagged and another 3300 released. Our return rate is 5.6% with 207 recaptures.

If you need any additional information please do not hesitate to call me at 561-467-7453.

Sincerely,



Stacy M. Foster
Sr. Environmental Specialist

**FLORIDA FISH AND WILDLIFE CONSERVATION COMMISSION
APPLICATION FOR COLLECTING PERMIT
AND SPECIAL ACTIVITY LICENSE**

Please Complete All Application Information (which is applicable to you)

Applicant Name: Stacy M. Foster
Affiliation: Florida Power & Light Co.
Mailing Address: 6451 South Ocean Dr.
City: Jensen Beach, State: FL Zip: 34957
Telephone: (561) 467-7453 Fax: (561) 467-7526
E-mail Address: stacy_foster@fpl.com

Previous Permit Number: 01S-018
FEID Number: _____
Social Security #: _____
SPL Number: _____
Vessel Number: _____

CHECK PERMIT OR LICENSE REQUESTED

(Circle one only)

- A. Scientific Research, Education & Exhibition: Minor
B. Scientific Research, Education & Exhibition: Major
C. Capture, Culture & Release of Native/Indigenous Broodstock
D. Quinaldine Use for Collecting Marine Life
E. Experimental or Innovative Gear

FEE

- 0 -
- 0 -
\$25
\$25
\$25

LOCATION

Gulf of Mexico _____ Depth _____
Atlantic Ocean X Depth _____
Florida Keys Nat. Mar. Sanct. _____ Depth _____
County(ies) to be collected in: St. Lucie
Intake Canal, St. Lucie Plant
Time Period: daily

BRIEF DESCRIPTION OF PROJECT/RESEARCH

Please see reverse for further information which may be required. (Attach additional information as necessary)

Trap, tag and release fish from the St. Lucie Power plant intake canal.
Use witham collectors and traps to remove lobster from the intake canal.
Use some of these animals for educational programs offered to school groups.

List all personnel who will be authorized for use of this permit for collection:

Michael Bresette, Dave Singewald, Richard Herren, Denise Stone

Specify Type of Gear (include measurement and mesh size) (Attach drawings and specifications for Experimental or Innovative Gear)				Species To Be Collected and/or Possessed (List all targeted species, size and number)		
Trawls	Headrope Length	Mesh Size(s)	Species	Size	#	
Single Otter	_____	_____	<u>See attached List and annual report</u>	_____	_____	_____
Multiple Otter	_____	_____		_____	_____	_____
Roller Frame	_____	_____		_____	_____	_____
Skimmer	_____	_____		_____	_____	_____
	_____	_____		_____	_____	_____
Nets	Length	Height	Mesh Size(s)			
Single Panel Gill	_____	_____	_____	_____	_____	_____
Multi Panel Gill	_____	_____	_____	_____	_____	_____
Trammel	_____	_____	_____	_____	_____	_____
Wing	_____	_____	_____	_____	_____	_____
Purse Seine	_____	_____	_____	_____	_____	_____
Beach Seine	_____	_____	_____	_____	_____	_____
Barrier net	_____	_____	_____	_____	_____	_____
Others	Diameter/Width	Mesh Size (s)	_____	_____	_____	_____
Cast net	_____	_____	_____	_____	_____	_____
Drop net	_____	_____	_____	_____	_____	_____
Plankton net	_____	_____	_____	_____	_____	_____
Longline	Length	# of Hooks	_____	_____	_____	_____
Bottom	_____	_____	_____	_____	_____	_____
Surface	_____	_____	_____	_____	_____	_____
Traps	# to be used	Dimension (L,W,H)	_____	_____	_____	_____
Minnow trap	_____	_____	_____	_____	_____	_____
Fish trap	<u>4</u>	<u>4', 2', 3'</u>	_____	_____	_____	_____
Lobster trap	<u>4</u>	<u>32", 23", 16"</u>	_____	_____	_____	_____
Stone Crab Trap	_____	_____	_____	_____	_____	_____
Blue Crab Trap	_____	_____	_____	_____	_____	_____
Shrimp Trap	_____	_____	_____	_____	_____	_____
Other Trap	<u>10-20</u>	<u>Witham Collectors</u>	_____	_____	_____	_____

Other Gear
Hook and Line X Hand Collection X
Chemical _____ Sediment Corer _____
Bottom Gram _____ Scientific Dredge _____
Suction Dredge _____
Scientific Dredge _____
Other: _____
(Submit a brief description of gear)

Bureau of Marine Fisheries Management

Applicant Signature

Bureau of Marine Enforcement

Return completed application to:
Bureau of Marine Fisheries Management
Mail Box MF-MFM
620 South Meridian Street
Tallahassee, Florida 32399-1600
(850) 488-6058 Fax: (850) 922-0463

Revised 5/17/2000

70 7944

12/04/2000 11:55 00020463

0204

AUDIT NO.

Florida Fish and Wildlife Conservation Commission
620 South Meridian Street • Tallahassee, Florida 32399-1600
(850) 488-6058

SPECIAL PERMIT

Issue Date:

1/27/2001

Permit #:

01S-018

ISSUED TO:

Stacy M. Foster
Florida Power & Light Company
6451 South Ocean Drive
Jensen Beach, Florida 34957

TYPE OF OPERATION:

Authorized to collect and possess marine organisms for experimental purposes at the Florida Power and Light Company, St. Lucie Plant located in Florida. Authorized to tag and release any marine finfish, to collect and rear spiny lobsters and to display or donate for education purposes those marine organisms collected in the St. Lucie Power Plant canals, subject to the following special conditions. Compliance with recreational marine fisheries regulations pursuant to Chapter 68B, Florida Administrative Code, (F.A.C.), with the following exceptions: tag and release activities using plastic type dart tags must be monitored continually and reported annually; donated species must be unregulated pursuant to Chapter 68B, F.A.C., or Chapter 370, Florida Statutes, or have written or verbal approval. Authorized to deploy four (4) fish traps and six (6) lobster traps within facility canals only; use of Witham collectors, hook and line and hand collection. Waiver of season, under or over size limits for the above referenced organisms. Authorized personnel shall comply with all provisions of Chapter 68E-1, F.A.C., and the attached documents.

Authorized Personnel: S. M. Foster, J. Toebe, M. Bresette, D. Singewald and R. Herren.

EXPIRATION DATE:

1/26/2002

This permit is revocable at any time. Conditions: Excludes all Federal, State, and County Park Systems.

FWC Revised 5/00

PERMIT HOLDER

INTAKE CANAL MAP

ATLANTIC OCEAN

□ = POSSIBLE TRAP SITES

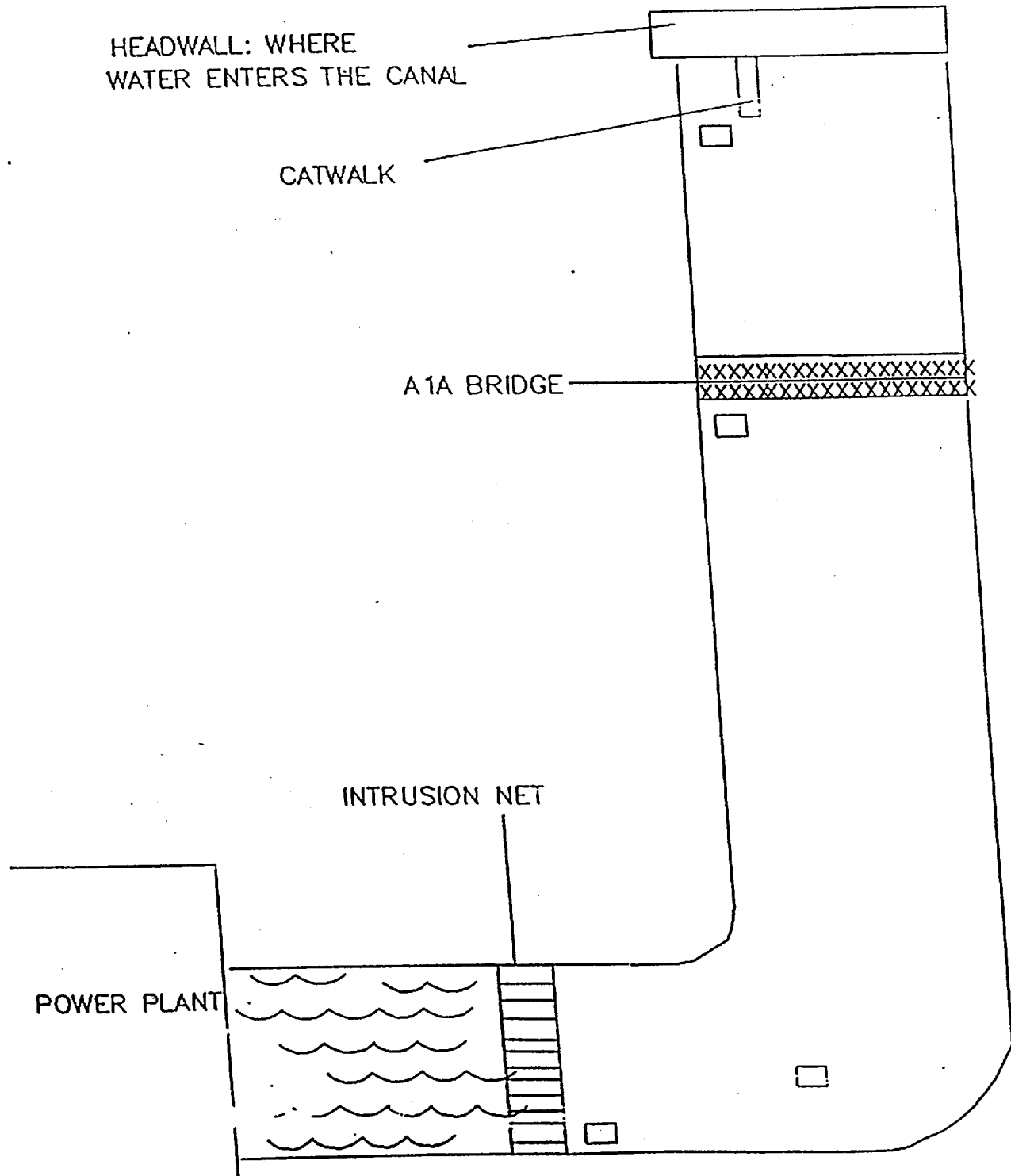


Figure 1.
Intake Canal Diagram

Attached List:
Species removed from intake
canal at St. Lucie Power Plant

NAMES

12/14/2001

CODE	COMMON NAME	SPECIES
0	VOID	
1	atlantic bumper	Chloroscombrus chrysurus
2	atlantic guitarfish	Rhinobatos lentiginosus
3	atlantic sharpnose shark	Rhizoprionodon terraenovae
4	atlantic stingray	Dasyatis sabina
5	bandtail puffer	Sphoeroides spengleri
6	bar jack	Caranx ruber
7	batfish	Dibranchius atlanticus
8	belted sandbass	Serranus subligarius
9	bermuda chub	Kyphosus sectatrix
10	black drum	Pagonias cromis
11	black grouper	Mycteroperca bonaci
12	black margate	Anisotremus surinamensis
13	blue anglefish	Holacanthus bermudensis
14	blue runner	Caranx crysos
15	bonnethead	Sphyrna tiburo
16	bullnose ray	Myliobatis freminvillei
17	clearnose skate	Raja eglanteria
18	cobia	Rachycentron canadum
19	cocoa damsel	Stegastes variabilis
20	common snook	Cantropomus undecimalis
21	cownose ray	Rhinoptera bonasus
22	cubbyu	Equetus umbrosus
23	cupera snapper	Lutjanus cyanopterus
24	devil ray	Mobula hypostoma
25	doctorfish	Ancanthurus chirurgus
26	dog snapper	Lutjanus jocu
27	electric ray	Narcine brasiliensis
28	Florida blenny	Chasmodes saburrae
29	french anglefish	Pomacanthus paru
30	french grunt	Haemulon flavolineatum
31	gafftopsail catfish	Bagre marinus
32	gag grouper	Mycteroperca microlepis
33	grass porgy	Calamus arctifrons
34	gray anglefish	Pomacanthus arcuatus
35	gray triggerfish	Balistes capriscus
36	green moray	Gymnothorax funebris
37	gulf kingfish	Menticirrhus littoralis

CODE	COMMON NAME	SPECIES
38	hardhead catfish	Arius felis
39	highhat	Equetus acuminatus
40	hogfish	Lachnolaimus maximus
41	horse-eye jack	Caranx latus
42	jack crevalle	Caranx hippos
43	jewfish	Epinephelus itajara
44	ladyfish	Elops saurus
45	lane snapper	Lutjanus synagris
46	lookdown	Selene vomer
47	mahogany snapper	Lutjanus mahogoni
48	mangrove snapper	Lutjanus griseus
49	mojarra	Eucinostomus sp.
50	mutton snapper	Lutjanus analis
51	night sergeant	Abudefduf taurus
52	nurse shark	Ginglymostoma cirratum
53	ocean surgeon	Acanthrus bahianus
54	permit	Tachinotus falcatus
55	pigfish	Orthopristis chrysoptera
56	plumed scorpion	Scorpaena grandicornis
57	porcupinefish	Diodon hystrix
58	pork fish	Anisotremus virginicus
59	quillfin blenny	Labrisomus filamentosus
60	red grouper	Epinephelus morio
61	red hermit crab	Petrochirus diogenes
62	red snapper	Lutjanus campechanus
63	redfish	Sciaenops ocellatus
64	remora	Remora remora
65	rougetail ray	Dasyatis centroura
66	sailors choice	Haemulon parra
67	scaled sardine	Harengula jaguana
68	scalloped hammerhead	Sphyrna lewini
69	schoolmaster	Lutjanus apodus
70	scrawled cowfish	Lactophrys quadricornis
71	sea bream	Archosargus rhomboidalis
72	sea urchin	Moiria atropos
73	sergeant major	Abudefduf saxatilis
74	sharksucker	Echeneis naucrates
75	sheepshead	Archosargus probatocephalus

NAMES

12/14/2001

CODE	COMMON NAME	SPECIES
76	silver perch	Bairdiella chrysoura
77	silver porgy	Diplodus argenteus
78	smallmouth grunt	Haemulon chrysargyreum
79	smooth butterfly	Gymnura micrura
80	southern flounder	Paralichthys lethostigma
81	southern stingray	Dasyatis americana
82	spadefish	Chaetodipterus faber
83	spanish grunt	Haemulon macrostomum
84	spottail pinfish	Diplodus holbrooki
85	spotted eagle ray	Aetobatis narinari
86	spotted scorpion	Scorpaena plumieri
87	striped mullet	Mugil cephalus
88	tarpon	Megalops atlanticus
89	tomtate	Haemulon aurolineatum
90	townsend angle	H. bermudensis x ciliaris
91	tripletail	Lobotes surinamensis
92	white grunt	Haemulon plumieri
93	white mullet	Mugil curema
94	winter flounder	Pleuronectes americanus
95	yellow jack	Caranx bartholomei
96	yellow mouth	Mycteroperca interstitialis
97	yellow stingray	Urolophus jamaicensis
98	yellowtail snapper	Ocyurus chrysurus
99	spotted seatrout	Cynoscion nebulosus
100	redfin parrotfish	Sparisoma rubripinne
101	green moray eel	Gymnothorax funebris
102	spotted moray eel	Gymnothorax moringa
103	bluestriped grunt	Haemulon sciurus
104	scrawled filefish	Aluterus scriptus
105	barracuda	Sphyraena barracuda
106	bluefish	Pomatomus saltatrix
107	beaugregory	Stegastes leucostictus
108	hairy blenny	Labrisomus nuchipinnis
109	pompano	Trachinotus carolinus
110	leopard toadfish	Opsanus pardus

FPL FISH RELEASE PROGRAM
FISH TRAP DESIGN
DIMENSIONS 3'h x 2'w x 4'l

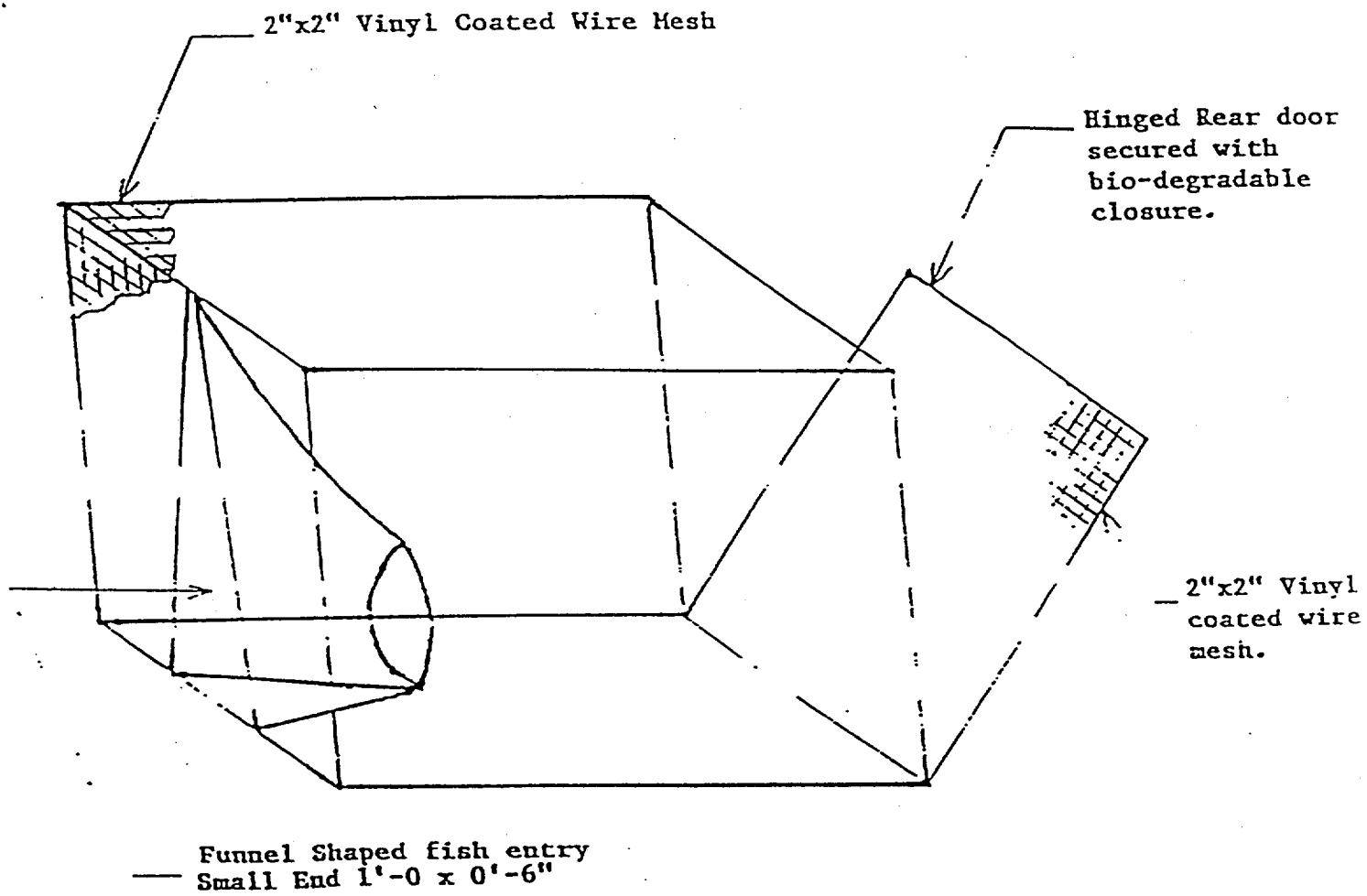


Figure 3.
Fish Trap Diagram



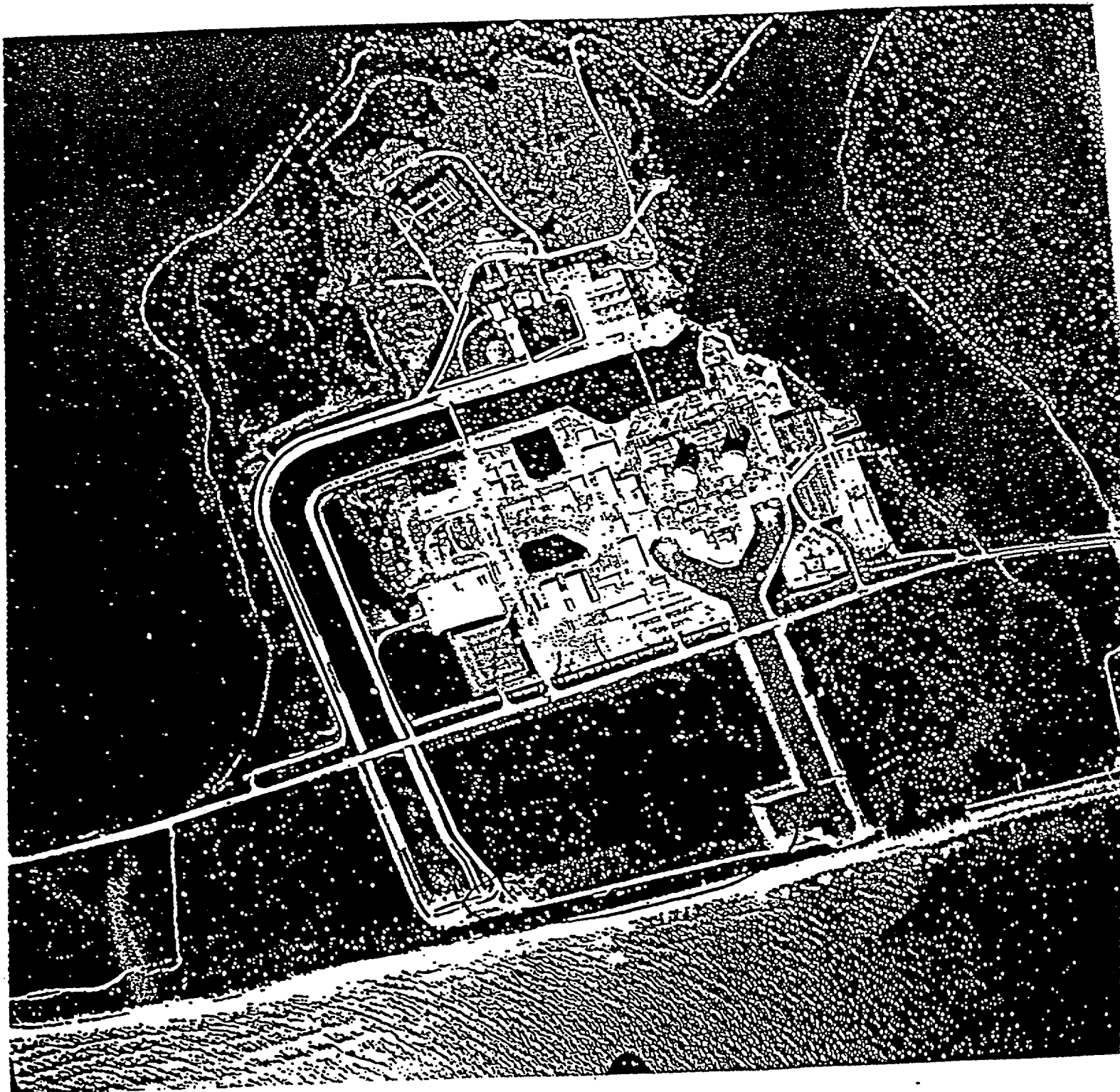


Figure 5.
Overview of St. Lucie Nuclear Plant

Annual Fish Release For 2001 With Out Tags

13-Dec-01

COMMON NAME	SPECIES	LENGTH	METHOD	LOCATION	DATE
sergeant major	<i>Abudefduf saxatilis</i>	2.0	Net	The Florida Aquarium	12/13/2000
sergeant major	<i>Abudefduf saxatilis</i>	3.0	Net	The Florida Aquarium	12/13/2000
sergeant major	<i>Abudefduf saxatilis</i>	3.0	Net	The Florida Aquarium	12/13/2000
sergeant major	<i>Abudefduf saxatilis</i>	5.0	Net	The Florida Aquarium	12/13/2000
sergeant major	<i>Abudefduf saxatilis</i>	2.0	Net	The Florida Aquarium	12/13/2000
sergeant major	<i>Abudefduf saxatilis</i>	3.0	Net	The Florida Aquarium	12/13/2000
sergeant major	<i>Abudefduf saxatilis</i>	3.0	Net	The Florida Aquarium	12/13/2000
sergeant major	<i>Abudefduf saxatilis</i>	5.0	Net	The Florida Aquarium	12/13/2000
black margate	<i>Anisotremus surinamensis</i>	29.2	Line	University of Florida	5/23/2001
black margate	<i>Anisotremus surinamensis</i>	63.5	Line	University of Florida	5/23/2001
black margate	<i>Anisotremus surinamensis</i>	55.9	Line	University of Florida	5/23/2001
black margate	<i>Anisotremus surinamensis</i>	27.9	Trap	Big Mud Creek	10/18/2001
black margate	<i>Anisotremus surinamensis</i>	49.5	Line	University of Florida	5/23/2001
black margate	<i>Anisotremus surinamensis</i>	43.7	Line	University of Florida	5/23/2001
black margate	<i>Anisotremus surinamensis</i>	53.3	Line	University of Florida	5/23/2001
black margate	<i>Anisotremus surinamensis</i>	45.7	Line	University of Florida	5/23/2001
black margate	<i>Anisotremus surinamensis</i>	40.6	Line	University of Florida	5/23/2001

COMMON NAME	SPECIES	LENGTH	METHOD	LOCATION	DATE
black margate	<i>Anisotremus surinamensis</i>	48.3	Line	University of Florida	5/23/2001
pork fish	<i>Anisotremus virginicus</i>	7.6	Trap	Big Mud Creek	6/21/2001
pork fish	<i>Anisotremus virginicus</i>	38.1	Trap	Big Mud Creek	8/3/2001
pork fish	<i>Anisotremus virginicus</i>	40.6	Trap	Big Mud Creek	6/21/2001
pork fish	<i>Anisotremus virginicus</i>	15.2	Trap	Big Mud Creek	6/21/2001
pork fish	<i>Anisotremus virginicus</i>	7.6	Trap	Big Mud Creek	6/21/2001
pork fish	<i>Anisotremus virginicus</i>	12.7	Trap	FPL Touch Tank	8/3/2001
pork fish	<i>Anisotremus virginicus</i>	5.0	Trap	The Florida Aquarium	12/13/2000
pork fish	<i>Anisotremus virginicus</i>	30.5	Trap	Big Mud Creek	8/3/2001
pork fish	<i>Anisotremus virginicus</i>	30.5	Trap	Big Mud Creek	8/3/2001
pork fish	<i>Anisotremus virginicus</i>	25.4	Trap	Big Mud Creek	8/3/2001
pork fish	<i>Anisotremus virginicus</i>	7.6	Trap	FPL Touch Tank	8/3/2001
pork fish	<i>Anisotremus virginicus</i>	15.2	Trap	FPL Touch Tank	8/3/2001
pork fish	<i>Anisotremus virginicus</i>	9.0	Line	North of the Discharge	3/13/2001
pork fish	<i>Anisotremus virginicus</i>	30.5	Trap	Big Mud Creek	8/3/2001
sheepshead	<i>Archosargus probatocephalus</i>	31.8	Line	FIT (Florida Institute of Technol	7/11/2001
sheepshead	<i>Archosargus probatocephalus</i>	35.5	Line	University of Florida	5/23/2001
sheepshead	<i>Archosargus probatocephalus</i>	36.0	Line	FIT (Florida Institute of Technol	7/11/2001
sheepshead	<i>Archosargus probatocephalus</i>	35.1	Line	FIT (Florida Institute of Technol	7/11/2001
sheepshead	<i>Archosargus probatocephalus</i>	31.9	Line	FIT (Florida Institute of Technol	7/11/2001

COMMON NAME	SPECIES	LENGTH	METHOD	LOCATION	DATE
sheepshead	<i>Archosargus probatocephalus</i>	38.1	Trap	Big Mud Creek	10/5/2001
sheepshead	<i>Archosargus probatocephalus</i>	27.9	Line	FIT (Florida Institute of Technol	7/11/2001
sheepshead	<i>Archosargus probatocephalus</i>	32.1	Line	FIT (Florida Institute of Technol	4/12/2001
sheepshead	<i>Archosargus probatocephalus</i>	20.3	Line	FIT (Florida Institute of Technol	2/26/2001
sheepshead	<i>Archosargus probatocephalus</i>	24.1	Line	FIT (Florida Institute of Technol	2/26/2001
sheepshead	<i>Archosargus probatocephalus</i>	25.4	Line	FIT (Florida Institute of Technol	2/26/2001
sheepshead	<i>Archosargus probatocephalus</i>	28.6	Line	FIT (Florida Institute of Technol	2/26/2001
sheepshead	<i>Archosargus probatocephalus</i>	22.8	Line	FIT (Florida Institute of Technol	3/4/2001
sheepshead	<i>Archosargus probatocephalus</i>	24.0	Line	FIT (Florida Institute of Technol	3/4/2001
sheepshead	<i>Archosargus probatocephalus</i>	27.9	Line	FIT (Florida Institute of Technol	3/4/2001
sheepshead	<i>Archosargus probatocephalus</i>	32.7	Line	FIT (Florida Institute of Technol	3/4/2001
sheepshead	<i>Archosargus probatocephalus</i>	30.5	Line	FIT (Florida Institute of Technol	3/13/2001
sheepshead	<i>Archosargus probatocephalus</i>	30.7	Line	FIT (Florida Institute of Technol	4/12/2001
sheepshead	<i>Archosargus probatocephalus</i>	36.5	Line	University of Florida	5/23/2001
sheepshead	<i>Archosargus probatocephalus</i>	32.1	Line	FIT (Florida Institute of Technol	4/12/2001
sheepshead	<i>Archosargus probatocephalus</i>	27.9	Line	University of Florida	4/23/2001
sheepshead	<i>Archosargus probatocephalus</i>	33.7	Line	FIT (Florida Institute of Technol	4/12/2001
sheepshead	<i>Archosargus probatocephalus</i>	33.7	Line	FIT (Florida Institute of Technol	4/12/2001
sheepshead	<i>Archosargus probatocephalus</i>	34.6	Line	FIT (Florida Institute of Technol	4/12/2001
sheepshead	<i>Archosargus probatocephalus</i>	36.9	Line	FIT (Florida Institute of Technol	4/12/2001

COMMON NAME	SPECIES	LENGTH	METHOD	LOCATION	DATE
sheepshead	<i>Archosargus probatocephalus</i>	38.8	Line	FIT (Florida Institute of Technol	4/12/2001
sheepshead	<i>Archosargus probatocephalus</i>	35.0	Line	University of Florida	5/23/2001
sheepshead	<i>Archosargus probatocephalus</i>	36.5	Line	University of Florida	5/23/2001
sheepshead	<i>Archosargus probatocephalus</i>	35.8	Line	FIT (Florida Institute of Technol	7/11/2001
sheepshead	<i>Archosargus probatocephalus</i>	29.0	Line	University of Florida	5/23/2001
sheepshead	<i>Archosargus probatocephalus</i>	30.5	Trap	Big Mud Creek	10/5/2001
sheepshead	<i>Archosargus probatocephalus</i>	36.5	Line	University of Florida	5/23/2001
sheepshead	<i>Archosargus probatocephalus</i>	30.9	Line	FIT (Florida Institute of Technol	4/12/2001
sheepshead	<i>Archosargus probatocephalus</i>	32.0	Line	FIT (Florida Institute of Technol	11/6/2001
sheepshead	<i>Archosargus probatocephalus</i>	41.7	Line	FIT (Florida Institute of Technol	11/6/2001
sheepshead	<i>Archosargus probatocephalus</i>	387.0	Line	FIT (Florida Institute of Technol	11/6/2001
sheepshead	<i>Archosargus probatocephalus</i>	32.3	Line	FIT (Florida Institute of Technol	11/6/2001
sheepshead	<i>Archosargus probatocephalus</i>	28.5	Line	FIT (Florida Institute of Technol	12/6/2001
sheepshead	<i>Archosargus probatocephalus</i>	35.7	Line	FIT (Florida Institute of Technol	12/6/2001
sheepshead	<i>Archosargus probatocephalus</i>	32.3	Line	FIT (Florida Institute of Technol	7/11/2001
jack crevalle	<i>Caranx hippos</i>	71.2	Line	University of Florida	5/23/2001
jack crevalle	<i>Caranx hippos</i>	40.6	Trap	Big Mud Creek	10/18/2001
jack crevalle	<i>Caranx hippos</i>	61.0	Line	University of Florida	5/23/2001
spadefish	<i>Chaetodipterus faber</i>	33.0	Trap	Big Mud Creek	10/18/2001
spadefish	<i>Chaetodipterus faber</i>	35.6	Trap	Big Mud Creek	10/18/2001

COMMON NAME	SPECIES	LENGTH	METHOD	LOCATION	DATE
spadefish	<i>Chaetodipterus faber</i>	25.4	Trap	FPL Touch Tank	10/18/2001
spadefish	<i>Chaetodipterus faber</i>	30.5	Trap	Big Mud Creek	10/18/2001
spadefish	<i>Chaetodipterus faber</i>	20.3	Trap	FPL Touch Tank	10/18/2001
spadefish	<i>Chaetodipterus faber</i>	30.5	Trap	Big Mud Creek	10/18/2001
spadefish	<i>Chaetodipterus faber</i>	25.4	Trap	Big Mud Creek	10/18/2001
spadefish	<i>Chaetodipterus faber</i>	22.9	Trap	Big Mud Creek	10/18/2001
spadefish	<i>Chaetodipterus faber</i>	30.5	Trap	Big Mud Creek	10/18/2001
spadefish	<i>Chaetodipterus faber</i>	35.6	Trap	Big Mud Creek	10/18/2001
porcupinefish	<i>Diodon hystrix</i>	38.1	Line	FIT (Florida Institute of Technol	2/26/2001
porcupinefish	<i>Diodon hystrix</i>	48.3	Line	FIT (Florida Institute of Technol	3/4/2001
spottail pinfish	<i>Diplodus holbrooki</i>	17.7	Line	FIT (Florida Institute of Technol	3/4/2001
spottail pinfish	<i>Diplodus holbrooki</i>	26.0	Line	FIT (Florida Institute of Technol	4/12/2001
spottail pinfish	<i>Diplodus holbrooki</i>	26.7	Line	FIT (Florida Institute of Technol	4/12/2001
spottail pinfish	<i>Diplodus holbrooki</i>	31.7	Line	FIT (Florida Institute of Technol	4/12/2001
spottail pinfish	<i>Diplodus holbrooki</i>	31.9	Line	FIT (Florida Institute of Technol	4/12/2001
spottail pinfish	<i>Diplodus holbrooki</i>	30.7	Line	FIT (Florida Institute of Technol	7/11/2001
spottail pinfish	<i>Diplodus holbrooki</i>	28.0	Line	FIT (Florida Institute of Technol	7/11/2001
spottail pinfish	<i>Diplodus holbrooki</i>	21.7	Line	FIT (Florida Institute of Technol	7/11/2001
spottail pinfish	<i>Diplodus holbrooki</i>	29.7	Line	FIT (Florida Institute of Technol	12/6/2001
spottail pinfish	<i>Diplodus holbrooki</i>	26.1	Line	FIT (Florida Institute of Technol	12/6/2001

COMMON NAME	SPECIES	LENGTH	METHOD	LOCATION	DATE
spottail pinfish	<i>Diplodus holbrooki</i>	32.7	Line	FIT (Florida Institute of Technol	3/13/2001
spottail pinfish	<i>Diplodus holbrooki</i>	17.9	Line	FIT (Florida Institute of Technol	2/26/2001
spottail pinfish	<i>Diplodus holbrooki</i>	32.7	Line	FIT (Florida Institute of Technol	11/6/2001
spottail pinfish	<i>Diplodus holbrooki</i>	25.4	Line	FIT (Florida Institute of Technol	4/12/2001
spottail pinfish	<i>Diplodus holbrooki</i>	29.0	Line	FIT (Florida Institute of Technol	11/6/2001
sharksucker	<i>Echeneis naucrates</i>	10.3	Trap	FPL Touch Tank	8/3/2001
sharksucker	<i>Echeneis naucrates</i>	10.2	Trap	FPL Touch Tank	8/3/2001
highhat	<i>Equetus acuminatus</i>	10.0	Line	North of the Discharge	3/13/2001
highhat	<i>Equetus acuminatus</i>	12.7	Line	FIT (Florida Institute of Technol	3/4/2001
highhat	<i>Equetus acuminatus</i>	15.2	Trap	FPL Touch Tank	8/3/2001
highhat	<i>Equetus acuminatus</i>	4.0	Line	North of the Discharge	3/13/2001
highhat	<i>Equetus acuminatus</i>	10.0	Line	North of the Discharge	3/13/2001
highhat	<i>Equetus acuminatus</i>	15.2	Trap	FPL Touch Tank	8/3/2001
highhat	<i>Equetus acuminatus</i>	7.0	Line	North of the Discharge	3/13/2001
cubbyu	<i>Equetus umbrosus</i>	19.7	Line	FIT (Florida Institute of Technol	4/12/2001
cubbyu	<i>Equetus umbrosus</i>	10.0	Trap	The Florida Aquarium	12/13/2000
mojarra	<i>Eucinostomus sp.</i>	10.2	Trap	Big Mud Creek	10/18/2001
mojarra	<i>Eucinostomus sp.</i>	12.7	Trap	FPL Touch Tank	10/18/2001
mojarra	<i>Eucinostomus sp.</i>	7.6	Trap	Big Mud Creek	10/18/2001
mojarra	<i>Eucinostomus sp.</i>	12.7	Trap	Big Mud Creek	10/18/2001

COMMON NAME	SPECIES	LENGTH	METHOD	LOCATION	DATE
mojarra	<i>Eucinostomus sp.</i>	10.2	Trap	Big Mud Creek	10/18/2001
mojarra	<i>Eucinostomus sp.</i>	7.6	Trap	Big Mud Creek	10/18/2001
mojarra	<i>Eucinostomus sp.</i>	12.7	Trap	Big Mud Creek	10/18/2001
mojarra	<i>Eucinostomus sp.</i>	12.7	Trap	Big Mud Creek	10/18/2001
mojarra	<i>Eucinostomus sp.</i>	102.0	Trap	Big Mud Creek	10/18/2001
mojarra	<i>Eucinostomus sp.</i>	10.2	Trap	FPL Touch Tank	10/18/2001
mojarra	<i>Eucinostomus sp.</i>	10.2	Trap	Big Mud Creek	10/18/2001
mojarra	<i>Eucinostomus sp.</i>	12.7	Trap	Big Mud Creek	10/18/2001
nurse shark	<i>Ginglymostoma cirratum</i>	91.4	Trap	Big Mud Creek	10/5/2001
nurse shark	<i>Ginglymostoma cirratum</i>	175.0	Line	North of the Discharge	3/4/2001
nurse shark	<i>Ginglymostoma cirratum</i>	156.0	Line	North of the Discharge	3/4/2001
nurse shark	<i>Ginglymostoma cirratum</i>	150.0	Line	North of the Discharge	3/4/2001
nurse shark	<i>Ginglymostoma cirratum</i>	122.0	Line	North of the Discharge	3/4/2001
nurse shark	<i>Ginglymostoma cirratum</i>	183.0	Line	North of the Discharge	7/11/2001
nurse shark	<i>Ginglymostoma cirratum</i>	120.0	Line	North of the Discharge	7/10/2001
white grunt	<i>Haemulon plumieri</i>	8.0	Trap	FPL Touch Tank	10/5/2001
white grunt	<i>Haemulon plumieri</i>	15.2	Trap	FPL Touch Tank	8/3/2001
white grunt	<i>Haemulon plumieri</i>	7.6	Trap	FPL Touch Tank	8/3/2001
scaled sardine	<i>Harengula jaguana</i>	7.0	Net	The Florida Aquarium	12/13/2000
scaled sardine	<i>Harengula jaguana</i>	12.7	Net	The Florida Aquarium	12/13/2000

COMMON NAME	SPECIES	LENGTH	METHOD	LOCATION	DATE
scaled sardine	<i>Harengula jaguana</i>	12.0	Net	The Florida Aquarium	12/13/2000
scaled sardine	<i>Harengula jaguana</i>	12.0	Net	The Florida Aquarium	12/13/2000
scaled sardine	<i>Harengula jaguana</i>	10.0	Net	The Florida Aquarium	12/13/2000
scaled sardine	<i>Harengula jaguana</i>	10.0	Net	The Florida Aquarium	12/13/2000
scaled sardine	<i>Harengula jaguana</i>	11.0	Net	The Florida Aquarium	12/13/2000
scaled sardine	<i>Harengula jaguana</i>	8.0	Net	The Florida Aquarium	12/13/2000
scaled sardine	<i>Harengula jaguana</i>	10.0	Net	The Florida Aquarium	12/13/2000
scaled sardine	<i>Harengula jaguana</i>	10.0	Net	The Florida Aquarium	12/13/2000
scaled sardine	<i>Harengula jaguana</i>	12.0	Net	The Florida Aquarium	12/13/2000
scaled sardine	<i>Harengula jaguana</i>	11.0	Net	The Florida Aquarium	12/13/2000
scaled sardine	<i>Harengula jaguana</i>	10.0	Net	The Florida Aquarium	12/13/2000
scaled sardine	<i>Harengula jaguana</i>	7.6	Net	The Florida Aquarium	12/13/2000
scaled sardine	<i>Harengula jaguana</i>	7.6	Net	The Florida Aquarium	12/13/2000
scaled sardine	<i>Harengula jaguana</i>	12.0	Net	The Florida Aquarium	12/13/2000
scaled sardine	<i>Harengula jaguana</i>	10.2	Net	The Florida Aquarium	12/13/2000
scaled sardine	<i>Harengula jaguana</i>	11.0	Net	The Florida Aquarium	12/13/2000
scaled sardine	<i>Harengula jaguana</i>	12.0	Net	The Florida Aquarium	12/13/2000
scaled sardine	<i>Harengula jaguana</i>	7.6	Net	The Florida Aquarium	12/13/2000
scaled sardine	<i>Harengula jaguana</i>	7.6	Net	The Florida Aquarium	12/13/2000
scaled sardine	<i>Harengula jaguana</i>	7.6	7.6	The Florida Aquarium	12/13/2000

COMMON NAME	SPECIES	LENGTH	METHOD	LOCATION	DATE
scaled sardine	<i>Harengula jaguana</i>	7.6	Net	The Florida Aquarium	12/13/2000
scaled sardine	<i>Harengula jaguana</i>	7.6	Net	The Florida Aquarium	12/13/2000
scaled sardine	<i>Harengula jaguana</i>	7.6	Net	The Florida Aquarium	12/13/2000
scaled sardine	<i>Harengula jaguana</i>	10.6	Net	The Florida Aquarium	12/13/2000
scaled sardine	<i>Harengula jaguana</i>	10.6	Net	The Florida Aquarium	12/13/2000
scaled sardine	<i>Harengula jaguana</i>	10.6	Net	The Florida Aquarium	12/13/2000
scaled sardine	<i>Harengula jaguana</i>	7.6	Net	The Florida Aquarium	12/13/2000
scaled sardine	<i>Harengula jaguana</i>	7.6	Net	The Florida Aquarium	12/13/2000
scaled sardine	<i>Harengula jaguana</i>	7.6	Net	The Florida Aquarium	12/13/2000
scaled sardine	<i>Harengula jaguana</i>	7.6	Net	The Florida Aquarium	12/13/2000
scaled sardine	<i>Harengula jaguana</i>	8.0	Net	The Florida Aquarium	12/13/2000
scaled sardine	<i>Harengula jaguana</i>	13.0	Net	The Florida Aquarium	12/13/2000
scaled sardine	<i>Harengula jaguana</i>	12.0	Net	The Florida Aquarium	12/13/2000
scaled sardine	<i>Harengula jaguana</i>	11.0	Net	The Florida Aquarium	12/13/2000
scaled sardine	<i>Harengula jaguana</i>	12.0	Net	The Florida Aquarium	12/13/2000
scaled sardine	<i>Harengula jaguana</i>	10.0	Net	The Florida Aquarium	12/13/2000
scaled sardine	<i>Harengula jaguana</i>	11.0	Net	The Florida Aquarium	12/13/2000
scaled sardine	<i>Harengula jaguana</i>	9.0	Net	The Florida Aquarium	12/13/2000
scaled sardine	<i>Harengula jaguana</i>	10.0	Net	The Florida Aquarium	12/13/2000
scaled sardine	<i>Harengula jaguana</i>	8.0	Net	The Florida Aquarium	12/13/2000

COMMON NAME	SPECIES	LENGTH	METHOD	LOCATION	DATE
scaled sardine	<i>Harengula jaguana</i>	12.0	Net	The Florida Aquarium	12/13/2000
scaled sardine	<i>Harengula jaguana</i>	8.0	Net	The Florida Aquarium	12/13/2000
scaled sardine	<i>Harengula jaguana</i>	9.0	Net	The Florida Aquarium	12/13/2000
scaled sardine	<i>Harengula jaguana</i>	9.0	Net	The Florida Aquarium	12/13/2000
scaled sardine	<i>Harengula jaguana</i>	10.0	Net	The Florida Aquarium	12/13/2000
scaled sardine	<i>Harengula jaguana</i>	11.0	Net	The Florida Aquarium	12/13/2000
scaled sardine	<i>Harengula jaguana</i>	6.0	Net	The Florida Aquarium	12/13/2000
scaled sardine	<i>Harengula jaguana</i>	9.0	Net	The Florida Aquarium	12/13/2000
scaled sardine	<i>Harengula jaguana</i>	7.0	Net	The Florida Aquarium	12/13/2000
scaled sardine	<i>Harengula jaguana</i>	9.0	Net	The Florida Aquarium	12/13/2000
scaled sardine	<i>Harengula jaguana</i>	9.0	Net	The Florida Aquarium	12/13/2000
scaled sardine	<i>Harengula jaguana</i>	11.0	Net	The Florida Aquarium	12/13/2000
scaled sardine	<i>Harengula jaguana</i>	10.0	Net	The Florida Aquarium	12/13/2000
scaled sardine	<i>Harengula jaguana</i>	10.0	Net	The Florida Aquarium	12/13/2000
scaled sardine	<i>Harengula jaguana</i>	9.0	Net	The Florida Aquarium	12/13/2000
scaled sardine	<i>Harengula jaguana</i>	8.0	Net	The Florida Aquarium	12/13/2000
scaled sardine	<i>Harengula jaguana</i>	9.0	Net	The Florida Aquarium	12/13/2000
scaled sardine	<i>Harengula jaguana</i>	12.0	Net	The Florida Aquarium	12/13/2000
scaled sardine	<i>Harengula jaguana</i>	9.0	Net	The Florida Aquarium	12/13/2000
scaled sardine	<i>Harengula jaguana</i>	9.0	Net	The Florida Aquarium	12/13/2000

COMMON NAME	SPECIES	LENGTH	METHOD	LOCATION	DATE
scaled sardine	<i>Harengula jaguana</i>	11.0	Net	The Florida Aquarium	12/13/2000
scaled sardine	<i>Harengula jaguana</i>	10.0	Net	The Florida Aquarium	12/13/2000
scaled sardine	<i>Harengula jaguana</i>	7.0	Net	The Florida Aquarium	12/13/2000
scaled sardine	<i>Harengula jaguana</i>	11.0	Net	The Florida Aquarium	12/13/2000
scaled sardine	<i>Harengula jaguana</i>	9.0	Net	The Florida Aquarium	12/13/2000
scaled sardine	<i>Harengula jaguana</i>	8.0	Net	The Florida Aquarium	12/13/2000
scaled sardine	<i>Harengula jaguana</i>	9.0	Net	The Florida Aquarium	12/13/2000
scaled sardine	<i>Harengula jaguana</i>	9.0	Net	The Florida Aquarium	12/13/2000
scaled sardine	<i>Harengula jaguana</i>	11.0	Net	The Florida Aquarium	12/13/2000
scaled sardine	<i>Harengula jaguana</i>	12.0	Net	The Florida Aquarium	12/13/2000
scaled sardine	<i>Harengula jaguana</i>	9.0	Net	The Florida Aquarium	12/13/2000
scaled sardine	<i>Harengula jaguana</i>	9.0	Net	The Florida Aquarium	12/13/2000
scaled sardine	<i>Harengula jaguana</i>	9.0	Net	The Florida Aquarium	12/13/2000
scaled sardine	<i>Harengula jaguana</i>	9.0	Net	The Florida Aquarium	12/13/2000
scaled sardine	<i>Harengula jaguana</i>	7.0	Net	The Florida Aquarium	12/13/2000
scaled sardine	<i>Harengula jaguana</i>	12.0	Net	The Florida Aquarium	12/13/2000
scaled sardine	<i>Harengula jaguana</i>	9.0	Net	The Florida Aquarium	12/13/2000
scaled sardine	<i>Harengula jaguana</i>	9.0	Net	The Florida Aquarium	12/13/2000
scaled sardine	<i>Harengula jaguana</i>	9.0	Net	The Florida Aquarium	12/13/2000
scaled sardine	<i>Harengula jaguana</i>	10.0	Net	The Florida Aquarium	12/13/2000
scaled sardine	<i>Harengula jaguana</i>	11.0	Net	The Florida Aquarium	12/13/2000

COMMON NAME	SPECIES	LENGTH	METHOD	LOCATION	DATE
scaled sardine	<i>Harengula jaguana</i>	11.0	Net	The Florida Aquarium	12/13/2000
scaled sardine	<i>Harengula jaguana</i>	11.0	Net	The Florida Aquarium	12/13/2000
scaled sardine	<i>Harengula jaguana</i>	10.0	Net	The Florida Aquarium	12/13/2000
scaled sardine	<i>Harengula jaguana</i>	10.0	Net	The Florida Aquarium	12/13/2000
scaled sardine	<i>Harengula jaguana</i>	12.0	Net	The Florida Aquarium	12/13/2000
scaled sardine	<i>Harengula jaguana</i>	12.0	Net	The Florida Aquarium	12/13/2000
scaled sardine	<i>Harengula jaguana</i>	10.0	Net	The Florida Aquarium	12/13/2000
scaled sardine	<i>Harengula jaguana</i>	9.0	Net	The Florida Aquarium	12/13/2000
scaled sardine	<i>Harengula jaguana</i>	9.0	Net	The Florida Aquarium	12/13/2000
scaled sardine	<i>Harengula jaguana</i>	8.0	Net	The Florida Aquarium	12/13/2000
scaled sardine	<i>Harengula jaguana</i>	10.0	Net	The Florida Aquarium	12/13/2000
scaled sardine	<i>Harengula jaguana</i>	8.0	Net	The Florida Aquarium	12/13/2000
scaled sardine	<i>Harengula jaguana</i>	11.0	Net	The Florida Aquarium	12/13/2000
scaled sardine	<i>Harengula jaguana</i>	10.0	Net	The Florida Aquarium	12/13/2000
scaled sardine	<i>Harengula jaguana</i>	11.0	Net	The Florida Aquarium	12/13/2000
scaled sardine	<i>Harengula jaguana</i>	11.0	Net	The Florida Aquarium	12/13/2000
scaled sardine	<i>Harengula jaguana</i>	9.0	Net	The Florida Aquarium	12/13/2000
scaled sardine	<i>Harengula jaguana</i>	11.0	Net	The Florida Aquarium	12/13/2000
scaled sardine	<i>Harengula jaguana</i>	10.0	Net	The Florida Aquarium	12/13/2000
scaled sardine	<i>Harengula jaguana</i>	9.0	Net	The Florida Aquarium	12/13/2000

COMMON NAME	SPECIES	LENGTH	METHOD	LOCATION	DATE
scaled sardine	<i>Harengula jaguana</i>	8.0	Net	The Florida Aquarium	12/13/2000
scaled sardine	<i>Harengula jaguana</i>	9.0	Net	The Florida Aquarium	12/13/2000
scaled sardine	<i>Harengula jaguana</i>	9.0	Net	The Florida Aquarium	12/13/2000
scaled sardine	<i>Harengula jaguana</i>	9.0	Net	The Florida Aquarium	12/13/2000
scaled sardine	<i>Harengula jaguana</i>	13.0	Net	The Florida Aquarium	12/13/2000
scaled sardine	<i>Harengula jaguana</i>	9.0	Net	The Florida Aquarium	12/13/2000
hairy blenny	<i>Labrisomus nuchipinnis</i>	10.0	Net	The Florida Aquarium	12/13/2000
tripletail	<i>Lobotes surinamensis</i>	76.2	Line	FIT (Florida Institute of Technol	2/26/2001
tripletail	<i>Lobotes surinamensis</i>	40.6	Line	FIT (Florida Institute of Technol	2/26/2001
tripletail	<i>Lobotes surinamensis</i>	76.2	Line	FIT (Florida Institute of Technol	3/4/2001
tripletail	<i>Lobotes surinamensis</i>	50.8	Line	FIT (Florida Institute of Technol	3/4/2001
mutton snapper	<i>Lutjanus analis</i>	46.9	Line	FIT (Florida Institute of Technol	3/13/2001
mutton snapper	<i>Lutjanus analis</i>	46.8	Line	FIT (Florida Institute of Technol	12/6/2001
mutton snapper	<i>Lutjanus analis</i>	46.0	Line	FIT (Florida Institute of Technol	11/6/2001
mutton snapper	<i>Lutjanus analis</i>	45.0	Line	FIT (Florida Institute of Technol	12/6/2001
mutton snapper	<i>Lutjanus analis</i>	53.5	Line	FIT (Florida Institute of Technol	12/6/2001
mutton snapper	<i>Lutjanus analis</i>	60.3	Line	FIT (Florida Institute of Technol	12/6/2001
mutton snapper	<i>Lutjanus analis</i>	62.7	Line	FIT (Florida Institute of Technol	12/6/2001
mutton snapper	<i>Lutjanus analis</i>	54.3	Line	FIT (Florida Institute of Technol	3/13/2001
mutton snapper	<i>Lutjanus analis</i>	40.1	Line	FIT (Florida Institute of Technol	7/11/2001

COMMON NAME	SPECIES	LENGTH	METHOD	LOCATION	DATE
schoolmaster	<i>Lutjanus apodus</i>	25.7	Line	FIT (Florida Institute of Technol	7/11/2001
schoolmaster	<i>Lutjanus apodus</i>	26.0	Line	FIT (Florida Institute of Technol	4/12/2001
mangrove snapper	<i>Lutjanus griseus</i>	33.3	Line	FIT (Florida Institute of Technol	11/6/2001
mangrove snapper	<i>Lutjanus griseus</i>	35.2	Line	FIT (Florida Institute of Technol	12/6/2001
mangrove snapper	<i>Lutjanus griseus</i>	39.7	Line	FIT (Florida Institute of Technol	12/6/2001
mangrove snapper	<i>Lutjanus griseus</i>	33.0	Trap	Big Mud Creek	6/21/2001
mangrove snapper	<i>Lutjanus griseus</i>	37.5	Line	University of Florida	5/23/2001
dog snapper	<i>Lutjanus jocu</i>	38.1	Line	University of Florida	5/23/2001
lane snapper	<i>Lutjanus synagris</i>	36.2	Line	University of Florida	5/23/2001
lane snapper	<i>Lutjanus synagris</i>	10.0	Trap	The Florida Aquarium	12/13/2000
lane snapper	<i>Lutjanus synagris</i>	7.0	Trap	The Florida Aquarium	12/13/2000
lane snapper	<i>Lutjanus synagris</i>	35.5	Line	University of Florida	5/23/2001
lane snapper	<i>Lutjanus synagris</i>	38.1	Line	University of Florida	5/23/2001
lane snapper	<i>Lutjanus synagris</i>	30.9	Line	FIT (Florida Institute of Technol	11/6/2001
lane snapper	<i>Lutjanus synagris</i>	37.5	Line	University of Florida	5/23/2001
lane snapper	<i>Lutjanus synagris</i>	38.7	Line	University of Florida	5/23/2001
lane snapper	<i>Lutjanus synagris</i>	37.5	Line	University of Florida	5/23/2001
lane snapper	<i>Lutjanus synagris</i>	7.6	Trap	The Florida Aquarium	12/13/2000
lane snapper	<i>Lutjanus synagris</i>	8.0	Trap	The Florida Aquarium	12/13/2000
lane snapper	<i>Lutjanus synagris</i>	7.0	Trap	The Florida Aquarium	12/13/2000

COMMON NAME	SPECIES	LENGTH	METHOD	LOCATION	DATE
lane snapper	<i>Lutjanus synagris</i>	25.9	Line	FIT (Florida Institute of Technol	4/12/2001
lane snapper	<i>Lutjanus synagris</i>	15.2	Trap	Big Mud Creek	6/21/2001
lane snapper	<i>Lutjanus synagris</i>	22.0	Line	FIT (Florida Institute of Technol	12/6/2001
lane snapper	<i>Lutjanus synagris</i>	40.6	Line	FIT (Florida Institute of Technol	3/4/2001
lane snapper	<i>Lutjanus synagris</i>	30.7	Line	FIT (Florida Institute of Technol	11/6/2001
lane snapper	<i>Lutjanus synagris</i>	20.7	Line	FIT (Florida Institute of Technol	4/12/2001
lane snapper	<i>Lutjanus synagris</i>	20.8	Line	FIT (Florida Institute of Technol	4/12/2001
lane snapper	<i>Lutjanus synagris</i>	22.0	Line	FIT (Florida Institute of Technol	4/12/2001
lane snapper	<i>Lutjanus synagris</i>	28.0	Line	FIT (Florida Institute of Technol	11/6/2001
lane snapper	<i>Lutjanus synagris</i>	22.7	Line	FIT (Florida Institute of Technol	4/12/2001
lane snapper	<i>Lutjanus synagris</i>	27.7	Line	FIT (Florida Institute of Technol	12/6/2001
lane snapper	<i>Lutjanus synagris</i>	27.7	Line	FIT (Florida Institute of Technol	4/12/2001
lane snapper	<i>Lutjanus synagris</i>	30.3	Line	FIT (Florida Institute of Technol	4/12/2001
lane snapper	<i>Lutjanus synagris</i>	23.3	Line	FIT (Florida Institute of Technol	12/6/2001
lane snapper	<i>Lutjanus synagris</i>	24.7	Line	FIT (Florida Institute of Technol	12/6/2001
lane snapper	<i>Lutjanus synagris</i>	39.7	Line	FIT (Florida Institute of Technol	2/26/2001
lane snapper	<i>Lutjanus synagris</i>	24.9	Line	FIT (Florida Institute of Technol	12/6/2001
lane snapper	<i>Lutjanus synagris</i>	26.0	Line	FIT (Florida Institute of Technol	12/6/2001
lane snapper	<i>Lutjanus synagris</i>	22.2	Line	FIT (Florida Institute of Technol	4/12/2001
lane snapper	<i>Lutjanus synagris</i>	38.1	Trap	Big Mud Creek	8/3/2001

COMMON NAME	SPECIES	LENGTH	METHOD	LOCATION	DATE
lane snapper	<i>Lutjanus synagris</i>	10.2	Trap	FPL Touch Tank	10/18/2001
lane snapper	<i>Lutjanus synagris</i>	12.7	Trap	FPL Touch Tank	10/18/2001
lane snapper	<i>Lutjanus synagris</i>	10.2	Trap	FPL Touch Tank	10/18/2001
lane snapper	<i>Lutjanus synagris</i>	7.6	Trap	FPL Touch Tank	10/18/2001
lane snapper	<i>Lutjanus synagris</i>	25.4	Trap	Big Mud Creek	10/18/2001
lane snapper	<i>Lutjanus synagris</i>	20.3	Trap	Big Mud Creek	10/18/2001
lane snapper	<i>Lutjanus synagris</i>	25.4	Trap	Big Mud Creek	10/18/2001
lane snapper	<i>Lutjanus synagris</i>	25.4	Trap	Big Mud Creek	8/3/2001
lane snapper	<i>Lutjanus synagris</i>	30.5	Trap	Big Mud Creek	8/3/2001
lane snapper	<i>Lutjanus synagris</i>	30.5	Trap	FPL Touch Tank	8/3/2001
lane snapper	<i>Lutjanus synagris</i>	35.6	Trap	Big Mud Creek	8/3/2001
lane snapper	<i>Lutjanus synagris</i>	25.4	Trap	Big Mud Creek	10/5/2001
lane snapper	<i>Lutjanus synagris</i>	25.4	Trap	Big Mud Creek	8/3/2001
lane snapper	<i>Lutjanus synagris</i>	15.2	Trap	Big Mud Creek	8/3/2001
lane snapper	<i>Lutjanus synagris</i>	7.6	Trap	Big Mud Creek	8/3/2001
lane snapper	<i>Lutjanus synagris</i>	27.9	Trap	FPL Touch Tank	8/3/2001
lane snapper	<i>Lutjanus synagris</i>	30.5	Trap	FPL Touch Tank	8/3/2001
lane snapper	<i>Lutjanus synagris</i>	25.4	Trap	FPL Touch Tank	8/3/2001
lane snapper	<i>Lutjanus synagris</i>	33.0	Trap	FPL Touch Tank	8/3/2001
lane snapper	<i>Lutjanus synagris</i>	27.9	Trap	FPL Touch Tank	8/3/2001

COMMON NAME	SPECIES	LENGTH	METHOD	LOCATION	DATE
lane snapper	<i>Lutjanus synagris</i>	25.4	Trap	FPL Touch Tank	8/3/2001
lane snapper	<i>Lutjanus synagris</i>	30.5	Trap	Big Mud Creek	8/3/2001
lane snapper	<i>Lutjanus synagris</i>	27.9	Trap	Big Mud Creek	10/5/2001
lane snapper	<i>Lutjanus synagris</i>	20.3	Trap	FPL Touch Tank	6/21/2001
lane snapper	<i>Lutjanus synagris</i>	24.5	Trap	Big Mud Creek	6/21/2001
lane snapper	<i>Lutjanus synagris</i>	25.4	Trap	Big Mud Creek	10/5/2001
lane snapper	<i>Lutjanus synagris</i>	30.5	Trap	Big Mud Creek	10/5/2001
lane snapper	<i>Lutjanus synagris</i>	30.5	Trap	Big Mud Creek	10/5/2001
lane snapper	<i>Lutjanus synagris</i>	25.4	Trap	Big Mud Creek	10/5/2001
lane snapper	<i>Lutjanus synagris</i>	30.5	Trap	Big Mud Creek	10/5/2001
lane snapper	<i>Lutjanus synagris</i>	30.5	Trap	Big Mud Creek	10/5/2001
lane snapper	<i>Lutjanus synagris</i>	35.6	Trap	Big Mud Creek	10/5/2001
lane snapper	<i>Lutjanus synagris</i>	24.5	Trap	FPL Touch Tank	10/5/2001
lane snapper	<i>Lutjanus synagris</i>	30.5	Trap	Big Mud Creek	10/5/2001
lane snapper	<i>Lutjanus synagris</i>	20.3	Trap	FPL Touch Tank	10/5/2001
lane snapper	<i>Lutjanus synagris</i>	25.4	Trap	Big Mud Creek	10/5/2001
lane snapper	<i>Lutjanus synagris</i>	27.9	Trap	Big Mud Creek	10/5/2001
lane snapper	<i>Lutjanus synagris</i>	30.5	Trap	Big Mud Creek	10/5/2001
lane snapper	<i>Lutjanus synagris</i>	25.4	Trap	Big Mud Creek	10/5/2001
lane snapper	<i>Lutjanus synagris</i>	33.0	Trap	Big Mud Creek	10/5/2001

COMMON NAME	SPECIES	LENGTH	METHOD	LOCATION	DATE
lane snapper	<i>Lutjanus synagris</i>	27.9	Trap	Big Mud Creek	10/5/2001
lane snapper	<i>Lutjanus synagris</i>	25.4	Trap	Big Mud Creek	10/5/2001
lane snapper	<i>Lutjanus synagris</i>	30.5	Trap	Big Mud Creek	10/5/2001
lane snapper	<i>Lutjanus synagris</i>	38.1	Trap	Big Mud Creek	10/5/2001
lane snapper	<i>Lutjanus synagris</i>	30.5	Trap	FPL Touch Tank	10/5/2001
lane snapper	<i>Lutjanus synagris</i>	25.4	Trap	Big Mud Creek	10/5/2001
lane snapper	<i>Lutjanus synagris</i>	17.8	Trap	FPL Touch Tank	6/21/2001
lane snapper	<i>Lutjanus synagris</i>	27.9	Trap	Big Mud Creek	6/21/2001
lane snapper	<i>Lutjanus synagris</i>	30.5	Trap	Big Mud Creek	6/21/2001
lane snapper	<i>Lutjanus synagris</i>	27.9	Trap	Big Mud Creek	6/21/2001
lane snapper	<i>Lutjanus synagris</i>	27.9	Trap	Big Mud Creek	6/21/2001
lane snapper	<i>Lutjanus synagris</i>	7.6	Trap	Big Mud Creek	6/21/2001
lane snapper	<i>Lutjanus synagris</i>	25.4	Trap	Big Mud Creek	6/21/2001
lane snapper	<i>Lutjanus synagris</i>	25.4	Trap	Big Mud Creek	6/21/2001
lane snapper	<i>Lutjanus synagris</i>	25.4	Trap	Big Mud Creek	6/21/2001
lane snapper	<i>Lutjanus synagris</i>	25.4	Trap	Big Mud Creek	6/21/2001
lane snapper	<i>Lutjanus synagris</i>	22.9	Trap	Big Mud Creek	6/21/2001
lane snapper	<i>Lutjanus synagris</i>	25.4	Trap	Big Mud Creek	6/21/2001
lane snapper	<i>Lutjanus synagris</i>	25.4	Trap	Big Mud Creek	6/21/2001
lane snapper	<i>Lutjanus synagris</i>	20.3	Trap	FPL Touch Tank	6/21/2001

COMMON NAME	SPECIES	LENGTH	METHOD	LOCATION	DATE
lane snapper	<i>Lutjanus synagris</i>	15.2	Trap	Big Mud Creek	6/21/2001
lane snapper	<i>Lutjanus synagris</i>	15.2	Trap	FPL Touch Tank	6/21/2001
lane snapper	<i>Lutjanus synagris</i>	25.4	Trap	Big Mud Creek	6/21/2001
lane snapper	<i>Lutjanus synagris</i>	30.5	Trap	Big Mud Creek	6/21/2001
lane snapper	<i>Lutjanus synagris</i>	17.8	Trap	FPL Touch Tank	6/21/2001
lane snapper	<i>Lutjanus synagris</i>	22.9	Trap	FPL Touch Tank	6/21/2001
lane snapper	<i>Lutjanus synagris</i>	38.1	Trap	FPL Touch Tank	8/3/2001
lane snapper	<i>Lutjanus synagris</i>	25.4	Trap	Big Mud Creek	6/21/2001
lane snapper	<i>Lutjanus synagris</i>	38.1	Trap	FPL Touch Tank	10/5/2001
lane snapper	<i>Lutjanus synagris</i>	30.5	Trap	Big Mud Creek	6/21/2001
lane snapper	<i>Lutjanus synagris</i>	35.6	Trap	Big Mud Creek	6/21/2001
lane snapper	<i>Lutjanus synagris</i>	22.9	Trap	Big Mud Creek	6/21/2001
lane snapper	<i>Lutjanus synagris</i>	30.5	Trap	FPL Touch Tank	8/3/2001
lane snapper	<i>Lutjanus synagris</i>	30.5	Trap	Big Mud Creek	6/21/2001
lane snapper	<i>Lutjanus synagris</i>	25.4	Trap	FPL Touch Tank	8/3/2001
lane snapper	<i>Lutjanus synagris</i>	12.7	Trap	FPL Touch Tank	8/3/2001
lane snapper	<i>Lutjanus synagris</i>	20.3	Trap	FPL Touch Tank	8/3/2001
lane snapper	<i>Lutjanus synagris</i>	25.4	Trap	FPL Touch Tank	8/3/2001
lane snapper	<i>Lutjanus synagris</i>	34.0	Line	FIT (Florida Institute of Technol	7/11/2001
lane snapper	<i>Lutjanus synagris</i>	32.7	Line	FIT (Florida Institute of Technol	7/11/2001

COMMON NAME	SPECIES	LENGTH	METHOD	LOCATION	DATE
lane snapper	<i>Lutjanus synagris</i>	30.7	Line	FIT (Florida Institute of Technol	7/11/2001
lane snapper	<i>Lutjanus synagris</i>	24.3	Line	FIT (Florida Institute of Technol	7/11/2001
lane snapper	<i>Lutjanus synagris</i>	24.0	Line	FIT (Florida Institute of Technol	7/11/2001
lane snapper	<i>Lutjanus synagris</i>	21.2	Line	FIT (Florida Institute of Technol	7/11/2001
lane snapper	<i>Lutjanus synagris</i>	20.5	Line	FIT (Florida Institute of Technol	7/11/2001
lane snapper	<i>Lutjanus synagris</i>	27.9	Trap	Big Mud Creek	6/21/2001
lane snapper	<i>Lutjanus synagris</i>	25.4	Trap	Big Mud Creek	6/21/2001
lane snapper	<i>Lutjanus synagris</i>	25.4	Trap	Big Mud Creek	6/21/2001
lane snapper	<i>Lutjanus synagris</i>	20.3	Trap	Big Mud Creek	6/21/2001
lane snapper	<i>Lutjanus synagris</i>	22.9	Trap	Big Mud Creek	6/21/2001
lane snapper	<i>Lutjanus synagris</i>	20.3	Trap	Big Mud Creek	6/21/2001
lane snapper	<i>Lutjanus synagris</i>	17.8	Trap	Big Mud Creek	6/21/2001
lane snapper	<i>Lutjanus synagris</i>	17.8	Trap	Big Mud Creek	6/21/2001
sea urchin	<i>Moiria atropos</i>	2.5	Net	The Florida Aquarium	12/13/2000
white mullet	<i>Mugil curema</i>	10.0	Cast Net	The Florida Aquarium	12/13/2000
white mullet	<i>Mugil curema</i>	14.0	Cast Net	The Florida Aquarium	12/13/2000
white mullet	<i>Mugil curema</i>	12.0	Cast Net	The Florida Aquarium	12/13/2000
white mullet	<i>Mugil curema</i>	13.0	Cast Net	The Florida Aquarium	12/13/2000
white mullet	<i>Mugil curema</i>	13.0	Cast Net	The Florida Aquarium	12/13/2000
white mullet	<i>Mugil curema</i>	11.0	Cast Net	The Florida Aquarium	12/13/2000

COMMON NAME	SPECIES	LENGTH	METHOD	LOCATION	DATE
white mullet	<i>Mugil curema</i>	15.0	Cast Net	The Florida Aquarium	12/13/2000
white mullet	<i>Mugil curema</i>	10.0	Cast Net	The Florida Aquarium	12/13/2000
white mullet	<i>Mugil curema</i>	15.0	Cast Net	The Florida Aquarium	12/13/2000
white mullet	<i>Mugil curema</i>	15.0	Cast Net	The Florida Aquarium	12/13/2000
white mullet	<i>Mugil curema</i>	10.0	Cast Net	The Florida Aquarium	12/13/2000
white mullet	<i>Mugil curema</i>	10.0	Cast Net	The Florida Aquarium	12/13/2000
white mullet	<i>Mugil curema</i>	12.0	Cast Net	The Florida Aquarium	12/13/2000
white mullet	<i>Mugil curema</i>	11.0	Cast Net	The Florida Aquarium	12/13/2000
white mullet	<i>Mugil curema</i>	14.0	Cast Net	The Florida Aquarium	12/13/2000
white mullet	<i>Mugil curema</i>	15.0	Cast Net	The Florida Aquarium	12/13/2000
white mullet	<i>Mugil curema</i>	12.0	Cast Net	The Florida Aquarium	12/13/2000
white mullet	<i>Mugil curema</i>	10.0	Cast Net	The Florida Aquarium	12/13/2000
white mullet	<i>Mugil curema</i>	10.0	Cast Net	The Florida Aquarium	12/13/2000
white mullet	<i>Mugil curema</i>	11.0	Cast Net	The Florida Aquarium	12/13/2000
white mullet	<i>Mugil curema</i>	11.0	Cast Net	The Florida Aquarium	12/13/2000
white mullet	<i>Mugil curema</i>	12.0	Cast Net	The Florida Aquarium	12/13/2000
white mullet	<i>Mugil curema</i>	12.0	Cast Net	The Florida Aquarium	12/13/2000
white mullet	<i>Mugil curema</i>	10.0	Cast Net	The Florida Aquarium	12/13/2000
white mullet	<i>Mugil curema</i>	12.0	Cast Net	The Florida Aquarium	12/13/2000
white mullet	<i>Mugil curema</i>	15.0	Cast Net	The Florida Aquarium	12/13/2000

COMMON NAME	SPECIES	LENGTH	METHOD	LOCATION	DATE
white mullet	<i>Mugil curema</i>	15.0	Cast Net	The Florida Aquarium	12/13/2000
white mullet	<i>Mugil curema</i>	12.0	Cast Net	The Florida Aquarium	12/13/2000
white mullet	<i>Mugil curema</i>	15.0	Cast Net	The Florida Aquarium	12/13/2000
white mullet	<i>Mugil curema</i>	10.0	Cast Net	The Florida Aquarium	12/13/2000
white mullet	<i>Mugil curema</i>	12.0	Cast Net	The Florida Aquarium	12/13/2000
white mullet	<i>Mugil curema</i>	15.0	Cast Net	The Florida Aquarium	12/13/2000
white mullet	<i>Mugil curema</i>	12.0	Cast Net	The Florida Aquarium	12/13/2001
white mullet	<i>Mugil curema</i>	15.0	Cast Net	The Florida Aquarium	12/13/2001
white mullet	<i>Mugil curema</i>	15.0	Cast Net	The Florida Aquarium	12/13/2000
white mullet	<i>Mugil curema</i>	12.0	Cast Net	The Florida Aquarium	12/13/2000
white mullet	<i>Mugil curema</i>	10.0	Cast Net	The Florida Aquarium	12/13/2000
white mullet	<i>Mugil curema</i>	15.0	Cast Net	The Florida Aquarium	12/13/2000
white mullet	<i>Mugil curema</i>	12.0	Cast Net	The Florida Aquarium	12/13/2000
white mullet	<i>Mugil curema</i>	10.0	Cast Net	The Florida Aquarium	12/13/2001
white mullet	<i>Mugil curema</i>	15.0	Cast Net	The Florida Aquarium	12/13/2000
white mullet	<i>Mugil curema</i>	15.0	Cast Net	The Florida Aquarium	12/13/2000
white mullet	<i>Mugil curema</i>	15.0	Cast Net	The Florida Aquarium	12/13/2000
white mullet	<i>Mugil curema</i>	10.0	Cast Net	The Florida Aquarium	12/13/2000
white mullet	<i>Mugil curema</i>	15.0	Cast Net	The Florida Aquarium	12/13/2000
white mullet	<i>Mugil curema</i>	12.0	Cast Net	The Florida Aquarium	12/13/2000

COMMON NAME	SPECIES	LENGTH	METHOD	LOCATION	DATE
white mullet	<i>Mugil curema</i>	10.0	Cast Net	The Florida Aquarium	12/13/2000
white mullet	<i>Mugil curema</i>	10.0	Cast Net	The Florida Aquarium	12/13/2000
white mullet	<i>Mugil curema</i>	10.0	Cast Net	The Florida Aquarium	12/13/2000
white mullet	<i>Mugil curema</i>	12.0	Cast Net	The Florida Aquarium	12/13/2000
white mullet	<i>Mugil curema</i>	10.0	Cast Net	The Florida Aquarium	12/13/2000
white mullet	<i>Mugil curema</i>	15.0	Cast Net	The Florida Aquarium	12/13/2000
white mullet	<i>Mugil curema</i>	15.0	Cast Net	The Florida Aquarium	12/13/2000
white mullet	<i>Mugil curema</i>	10.0	Cast Net	The Florida Aquarium	12/13/2000
white mullet	<i>Mugil curema</i>	10.0	Cast Net	The Florida Aquarium	12/13/2000
white mullet	<i>Mugil curema</i>	12.0	Cast Net	The Florida Aquarium	12/13/2000
white mullet	<i>Mugil curema</i>	10.0	Cast Net	The Florida Aquarium	12/30/2000
white mullet	<i>Mugil curema</i>	14.0	Cast Net	The Florida Aquarium	12/13/2000
white mullet	<i>Mugil curema</i>	10.0	Cast Net	The Florida Aquarium	12/13/2000
white mullet	<i>Mugil curema</i>	10.0	Cast Net	The Florida Aquarium	12/13/2000
white mullet	<i>Mugil curema</i>	12.0	Cast Net	The Florida Aquarium	12/13/2000
white mullet	<i>Mugil curema</i>	10.0	Cast Net	The Florida Aquarium	12/13/2000
white mullet	<i>Mugil curema</i>	10.0	Cast Net	The Florida Aquarium	12/13/2000
white mullet	<i>Mugil curema</i>	12.0	Cast Net	The Florida Aquarium	12/13/2000
white mullet	<i>Mugil curema</i>	15.0	Cast Net	The Florida Aquarium	12/13/2000
white mullet	<i>Mugil curema</i>	10.0	Cast Net	The Florida Aquarium	12/13/2000

COMMON NAME	SPECIES	LENGTH	METHOD	LOCATION	DATE
white mullet	<i>Mugil curema</i>	10.0	Cast Net	The Florida Aquarium	12/13/2000
white mullet	<i>Mugil curema</i>	13.0	Cast Net	The Florida Aquarium	12/13/2000
white mullet	<i>Mugil curema</i>	12.0	Cast Net	The Florida Aquarium	12/13/2000
white mullet	<i>Mugil curema</i>	14.0	Cast Net	The Florida Aquarium	12/13/2000
white mullet	<i>Mugil curema</i>	12.0	Cast Net	The Florida Aquarium	12/13/2000
white mullet	<i>Mugil curema</i>	10.0	Cast Net	The Florida Aquarium	12/13/2000
white mullet	<i>Mugil curema</i>	12.0	Cast Net	The Florida Aquarium	12/13/2000
white mullet	<i>Mugil curema</i>	12.0	Cast Net	The Florida Aquarium	12/13/2000
white mullet	<i>Mugil curema</i>	14.0	Cast Net	The Florida Aquarium	12/13/2000
white mullet	<i>Mugil curema</i>	15.0	Cast Net	The Florida Aquarium	12/13/2000
white mullet	<i>Mugil curema</i>	10.0	Cast Net	The Florida Aquarium	12/13/2000
white mullet	<i>Mugil curema</i>	13.0	Cast Net	The Florida Aquarium	12/13/2000
white mullet	<i>Mugil curema</i>	15.0	Cast Net	The Florida Aquarium	12/13/2000
white mullet	<i>Mugil curema</i>	10.0	Cast Net	The Florida Aquarium	12/13/2000
white mullet	<i>Mugil curema</i>	12.0	Cast Net	The Florida Aquarium	12/13/2000
white mullet	<i>Mugil curema</i>	15.0	Cast Net	The Florida Aquarium	12/13/2000
white mullet	<i>Mugil curema</i>	15.0	Cast Net	The Florida Aquarium	12/13/2000
white mullet	<i>Mugil curema</i>	11.0	Cast Net	The Florida Aquarium	12/13/2000
white mullet	<i>Mugil curema</i>	13.0	Cast Net	The Florida Aquarium	12/13/2000
white mullet	<i>Mugil curema</i>	11.0	Cast Net	The Florida Aquarium	12/13/2000

COMMON NAME	SPECIES	LENGTH	METHOD	LOCATION	DATE
white mullet	<i>Mugil curema</i>	14.0	Cast Net	The Florida Aquarium	12/13/2000
white mullet	<i>Mugil curema</i>	10.0	Cast Net	The Florida Aquarium	12/13/2000
white mullet	<i>Mugil curema</i>	12.0	Cast Net	The Florida Aquarium	12/13/2000
white mullet	<i>Mugil curema</i>	11.0	Cast Net	The Florida Aquarium	12/13/2000
white mullet	<i>Mugil curema</i>	12.0	Cast Net	The Florida Aquarium	12/13/2000
white mullet	<i>Mugil curema</i>	11.0	Cast Net	The Florida Aquarium	12/13/2000
white mullet	<i>Mugil curema</i>	13.0	Cast Net	The Florida Aquarium	12/13/2000
white mullet	<i>Mugil curema</i>	12.0	Cast Net	The Florida Aquarium	12/13/2000
white mullet	<i>Mugil curema</i>	10.0	Cast Net	The Florida Aquarium	12/13/2000
white mullet	<i>Mugil curema</i>	15.0	Cast Net	The Florida Aquarium	12/13/2000
white mullet	<i>Mugil curema</i>	13.0	Cast Net	The Florida Aquarium	12/13/2000
white mullet	<i>Mugil curema</i>	12.0	Cast Net	The Florida Aquarium	12/13/2000
white mullet	<i>Mugil curema</i>	11.0	Cast Net	The Florida Aquarium	12/13/2000
white mullet	<i>Mugil curema</i>	10.0	Cast Net	The Florida Aquarium	12/13/2000
white mullet	<i>Mugil curema</i>	15.0	Cast Net	The Florida Aquarium	12/13/2000
white mullet	<i>Mugil curema</i>	14.0	Cast Net	The Florida Aquarium	12/13/2000
white mullet	<i>Mugil curema</i>	13.0	Cast Net	The Florida Aquarium	12/13/2000
white mullet	<i>Mugil curema</i>	12.0	Cast Net	The Florida Aquarium	12/13/2000
white mullet	<i>Mugil curema</i>	12.0	Cast Net	The Florida Aquarium	12/13/2000
white mullet	<i>Mugil curema</i>	14.0	Cast Net	The Florida Aquarium	12/13/2000

COMMON NAME	SPECIES	LENGTH	METHOD	LOCATION	DATE
winter flounder	<i>Pleuronectes americanus</i>	15.2	Seine	FPL Touch Tank	10/5/2001
remora	<i>Remora remora</i>	32.0	Line	FIT (Florida Institute of Technol	11/6/2001
redfish	<i>Sciaenops ocellatus</i>	65.9	Line	FIT (Florida Institute of Technol	12/6/2001
redfish	<i>Sciaenops ocellatus</i>	60.3	Line	FIT (Florida Institute of Technol	12/6/2001
redfish	<i>Sciaenops ocellatus</i>	71.7	Line	FIT (Florida Institute of Technol	3/13/2001
barracuda	<i>Sphyraena barracuda</i>	122.0	Line	FIT (Florida Institute of Technol	11/6/2001