



UNITED STATES
NUCLEAR REGULATORY COMMISSION
REGION IV
611 RYAN PLAZA DRIVE, SUITE 400
ARLINGTON, TEXAS 76011-8064

APR 17 2002

Paul D. Hinnenkamp, Vice President - Operations
River Bend Station
Entergy Operations, Inc.
P.O. Box 220
St. Francisville, Louisiana 70775

SUBJECT: RIVER BEND STATION END OF CYCLE MEETING

Dear Mr. Hinnenkamp:

This refers to the end-of-cycle performance assessment meeting conducted at the Best Western St. Francis Hotel on the Lake, in St. Francisville, Louisiana, on April 9, 2002. As you are aware, the purpose of this public meeting between the NRC and Entergy Operations was to present and discuss performance results of the River Bend Station for the period of April 1 through December 29, 2001. The attendance list and the NRC's presentation are enclosed (Enclosures 1 and 2, respectively).

In accordance with 10 CFR 2.790 of the NRC's "Rules of Practice," a copy of this letter and its enclosures will be available electronically for public inspection in the NRC Public Document Room or from the Publicly Available Records (PARS) component of NRC's document system (ADAMS). ADAMS is accessible from the NRC Web site at <http://www.nrc.gov/reading-rm/adams.html> (the Public Electronic Reading Room).

Should you have any questions concerning this matter, we will be pleased to discuss them with you.

Sincerely,

A handwritten signature in black ink, appearing to read "David N. Graves".

David N. Graves, Chief
Projects Branch B
Division of Reactor Projects

Docket: 50-458
License: NPF-47

Enclosures:
1. Attendance List
2. NRC Presentation

Entergy Operations, Inc.

-2-

cc w/enclosures:

Executive Vice President and
Chief Operating Officer
Entergy Operations, Inc.
P.O. Box 31995
Jackson, Mississippi 39286-1995

Vice President
Operations Support
Entergy Operations, Inc.
P.O. Box 31995
Jackson, Mississippi 39286-1995

General Manager
Plant Operations
River Bend Station
Entergy Operations, Inc.
P.O. Box 220
St. Francisville, Louisiana 70775

Director - Nuclear Safety
River Bend Station
Entergy Operations, Inc.
P.O. Box 220
St. Francisville, Louisiana 70775

Wise, Carter, Child & Caraway
P.O. Box 651
Jackson, Mississippi 39205

Mark J. Wetterhahn, Esq.
Winston & Strawn
1401 L Street, N.W.
Washington, DC 20005-3502

Manager - Licensing
River Bend Station
Entergy Operations, Inc.
P.O. Box 220
St. Francisville, Louisiana 70775

The Honorable Richard P. Ieyoub
Attorney General
Department of Justice
State of Louisiana
P.O. Box 94005
Baton Rouge, Louisiana 70804-9005

H. Anne Plettinger
3456 Villa Rose Drive
Baton Rouge, Louisiana 70806

President
West Feliciana Parish Police Jury
P.O. Box 1921
St. Francisville, Louisiana 70775

Michael E. Henry, State Liaison Officer
Department of Environmental Quality
P.O. Box 82135
Baton Rouge, Louisiana 70884-2135

Brian Almon
Public Utility Commission
William B. Travis Building
P.O. Box 13326
1701 North Congress Avenue
Austin, Texas 78701-3326

Jimmy Bello, President
Pointe Coupe Parish Police Jury
P.O. Box 290
New Roads, Louisiana 70760

James Hunt, President
East Feliciana Parish Police Jury
P.O. Box 427
Clinton, Louisiana 70722

Ted Denstel, Parish President
West Baton Rouge Parish Counsel
P.O. Box 757
Port Allen, Louisiana 70767

Burt Babers, President
West Feliciana Parish Police Jury
P.O. Box 1921
St. Francisville, Louisiana 70775

Entergy Operations, Inc.

-4-

Bobby Simpson, Mayor-President
Office of the Mayor-President
P.O. Box 1471
Baton Rouge, Louisiana 70821

Federal Emergency Management
Ron Castleman, Regional Director
Region VI, Federal Center
800 North Loop 288
Denton, Texas 76201-3698

Jim Brewer
Asst. Chief Administrative Officer
P.O. Box 1471
Baton Rouge, LA 70821

Joanne Moreau, Director
Dept. of Emergency Management
East Baton Rouge Parish
P.O. Box 1471
Baton Rouge, LA 70821

Charles LeBlanc, Director
Dept. of Emergency Management
West Baton Rouge Parish
P.O. Box 757
Port Allen, LA 70767

Don Ewing, Director
Dept. of Emergency Management
Pointe Coupee Parish
P.O. Box 248
New Roads, LA 70760

Col. Michael L. Brown
Assistant Director
Military Department
Louisiana Office of Emergency Preparedness
P.O. Box 44217
Baton Rouge, LA 70804

Tara Wicker
Asst. Chief Administrative Officer
P.O. Box 1471
Baton Rouge, LA 70821

Entergy Operations, Inc.

-5-

Jesse Means, Director
Dept. of Emergency Management
West Feliciana Parish
P.O. Box 1927
St. Francisville, LA 70775

T. W. Prewitt, Director
Dept. of Emergency Management
East Feliciana Parish
P.O. Box 640
Jackson, LA 70748

END-OF-CYCLE MEETING ATTENDANCE

LICENSEE/FACILITY	Entergy Operations, Inc. - River Bend Station
DATE/TIME	April 9, 2002; 7:00 p.m.
LOCATION	Best Western St. Francisville Inn
NAME (PLEASE PRINT)	ORGANIZATION
Robert Biggs	EOI / NSA
Joe Leavines	EOI / NSA
Marie Miller	
W.D. Johnson	NRC
PETER ALTER	NRC
DAVID GRAVES	NRC
Dwight Mims	EOI / RBS
Barry Allen	EOI / RBS
Kathy Beachamp	EOI / RBS
DAVID BEACHAMP	EOI / RBS
Michael O. Miller	NRC
Norman E. Tison	EOI / RBS
Hucky Purpera	LOEP

END-OF-CYCLE MEETING ATTENDANCE

LICENSEE/FACILITY	Entergy Operations, Inc. - River Bend Station
DATE/TIME	April 9, 2002; 7:00 p.m.
LOCATION	Best Western St. Francisville Inn
NAME (PLEASE PRINT)	ORGANIZATION
CHUCK FLETCHER	MP&C EOI
George Williams	Operations Support, EOI
Diane Park	Entergy
MIKE BARNETT	ENTERGY
Anne Plettinger	Public
Roger Tobe	Entergy
Stephen Crawford	Coach Stage's Civics class
HOLLY SMITH	Civics class
MICHAEL HENRY	LADEQ
PROSANTA CHOWDHURY	LADEQ
Jesse Means	WFP/OED
Irma Terrance	O Entergy
Lea Williams	Public

END-OF-CYCLE MEETING ATTENDANCE

LICENSEE/FACILITY	Entergy Operations, Inc. - River Bend Station
DATE/TIME	April 9, 2002; 7:00 p.m.
LOCATION	Best Western St. Francisville Inn
NAME (PLEASE PRINT)	ORGANIZATION
PAUL HINNENKAMP	RBS VP
DAVEY WELLS	RBS RADIATION PROTECTION
Amy Wells	EST- River Bend Station
Rick King	EOI - River Bend Station, Director
Russ BRIAN	EOI - River Bend Director Engineering
JOHN STANDRIDGE	ST. FRANCISVILLE RESIDENT
KEVIN P. SWEENEY	LDEQ
Mike Williams	Entergy RBS

ENCLOSURE 2

ANNUAL ASSESSMENT MEETING



**Nuclear Regulatory Commission
Region IV**

NRC PERFORMANCE GOALS

- **Maintain public safety and protect the environment**
- **Enhance public confidence**
- **Improve:**
 - Effectiveness
 - Efficiency
 - Realism of processes and decision making
- **Reduce unnecessary regulatory burden**



NRC Meeting Guidelines

- **Registration Table**
- **Questions and Answers**
- **Handouts**
- **Feedback Forms**



NRC Meeting Guidelines

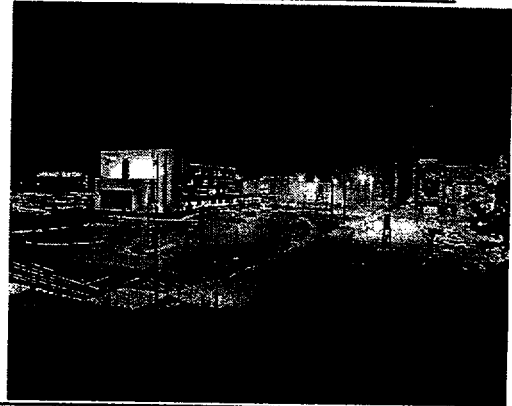
- **Meeting with Licensee and Public**
- **Inform Public of Plant Performance**





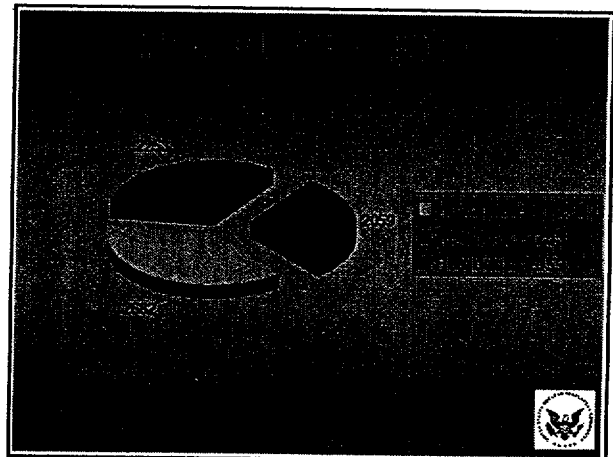
**Nuclear Regulatory Commission
Region IV**

River Bend Station



Meeting Agenda

- **REGULATORY OVERSIGHT**
- **FINDINGS AND ASSESSMENTS**
- **ADDITIONAL FOCUS AREAS**
- **QUESTIONS AND ANSWERS**



Resident Inspectors

- Stationed at the plant
- Over 2000 hours of oversight
- Prompt response capability

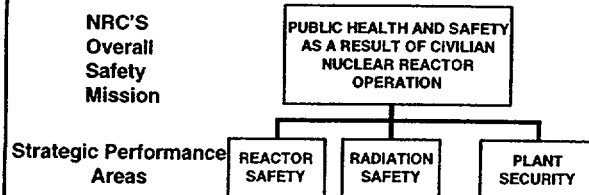


Regional Inspectors

- Over 2200 hours of oversight
- Specialized
- Inspection teams



Comprehensive Oversight Program

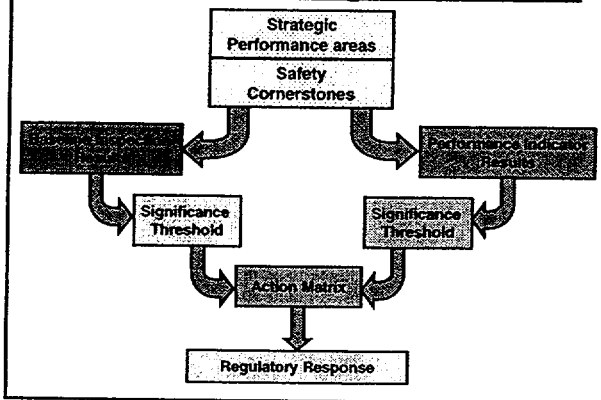


NRC Oversight Activities

- Provide assurance plants are:
 - Operating safely
 - Complying with regulations
- Based on a logical and sound framework
- Inspections focused on key safety areas
- Objective indicators of performance
- Assessment program triggers regulatory actions



Reactor Oversight Process



Baseline Inspection Program

- **Gathers objective evidence of plant safety**
- **Conducted at all plants**
- **Focuses on safety-significant:**
 - systems
 - components
 - activities
 - events



Baseline Inspection Program

- **Inspection reports describe significant findings and non-compliance**
- **Inspection reports are publicly accessible**



Event Follow-up and Supplemental Inspections

- **Review events for significance**
- **Follow-up significant inspection findings**
- **Determine causes of performance declines**
- **Provide for graduated response**



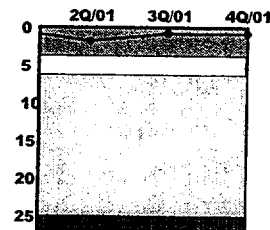
Reactor Oversight Process

SAFETY SIGNIFICANCE

GREEN	- very low
WHITE	- low to moderate
YELLOW	- substantial
RED	- high

Performance Indicators

Unplanned Scrams per 7000 critical hours



Thresholds:

White >3.0,

Yellow >6.0,

Red >25.0

Unplanned scrams per 7000 critical hours	2Q/01	3Q/01	4Q/01
Actual scrams	1.0	0	0
Critical hours	2288.2	2036.0	1915.6
Indicator value	1.6	0.8	0.8

Key Aspects of the Assessment Program

- Objective review of licensee performance
- "Action Matrix" to determine agency response in three areas:
 - Inspection
 - Management Involvement
 - Regulatory Actions
- Plant specific assessment letters
- Information on NRC public web site



Inspection Program

- Inspection reports describe more than minor findings and non-compliance
- Inspection reports are publicly accessible

www.NRC.gov/reading-rm/adams.html



Performance Indicators

- **Performance indicator results and other assessment information available on the NRC's public web site:**

www.NRC.gov/NRR/OVERSIGHT/ASSESS/RBS1/rbs1_chart.html



Plant Performance Summary



Inspection Results

NRC and Licensee identified inspection findings were of very low safety significance

No special or supplemental inspections necessary



Performance Indicator Results

All performance indicators within the Licensee Control Band



Assessment Conclusion

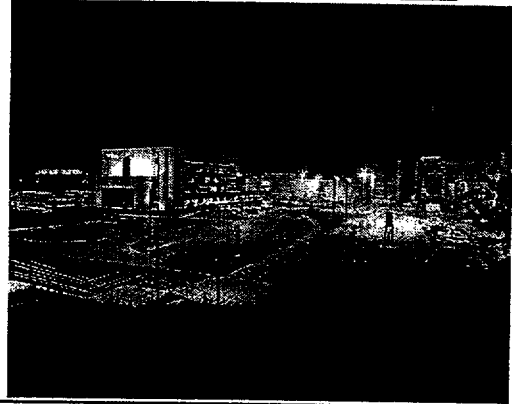
Licensee effectively managed:

- Reactor safety
- Radiation safety
- Plant security

River Bend Station operated in a manner that protected the health and safety of the public



River Bend Station



Additional Focus Areas

- NRC Responds as needed
- Mandated Licensee Actions
- Implemented Emergency Preparedness



Bulletin 2001-01

- Small leaks were discovered
- Mandated Licensee Actions
- Identified larger problem



Reaction to September 11

- **Activated Facilities**
- **Issued Advisories**
- **Verified Implementation**



Reaction to September 11

- **Coordinated with other agencies**
- **Updated advisories as terrorist threat changed**
- **Verified Implementation**



Reaction to September 11

- **Ordered Increase in minimum security requirements**
- **Reviewing security regulations considering our changed environment**



Conclusions

- **Assured Public Safety**
- **Flexible/Predictable Response**
- **Risk-informed Programs**



Contacting the NRC

- **Report a Safety Concern:**
(800) 695-7403 or Allegation@nrc.gov
- **General Information or questions:**
www.nrc.gov
- **Report an Emergency:**
(301) 816-5100 (collect)

Select "What we do" for Public Affairs