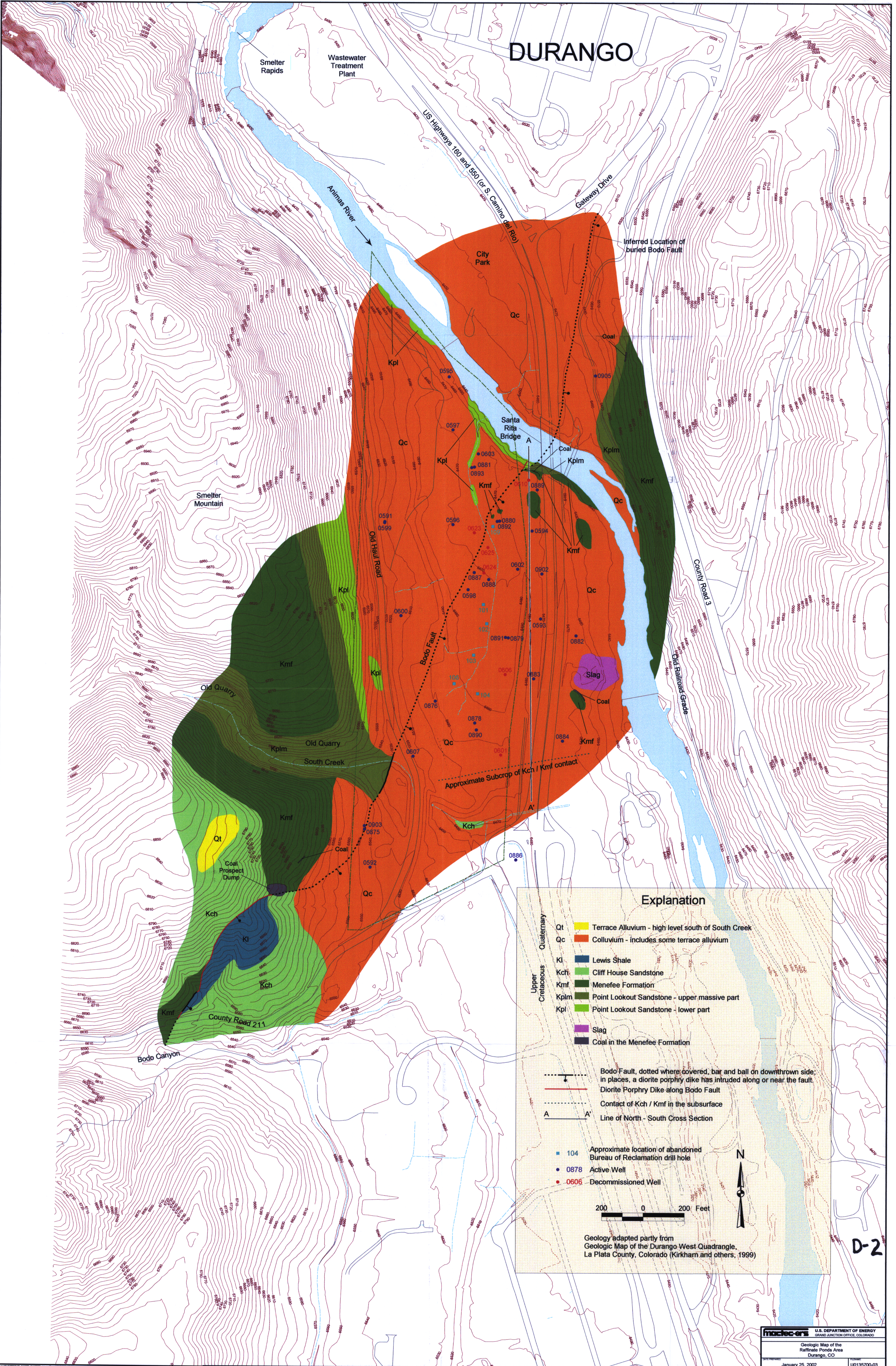


DURANGO



**Explanation**

**Quaternary**

- Qt Terrace Alluvium - high level south of South Creek
- Qc Colluvium - includes some terrace alluvium

**Upper Cretaceous**

- Kl Lewis Shale
- Kch Cliff House Sandstone
- Kmf Menefee Formation
- Kplm Point Lookout Sandstone - upper massive part
- Kpl Point Lookout Sandstone - lower part

**Other Features**

- Slag
- Coal in the Menefee Formation

**Geological Features**

- Bodo Fault, dotted where covered, bar and ball on downthrown side; in places, a diorite porphyry dike has intruded along or near the fault.
- Diorite Porphyry Dike along Bodo Fault
- Contact of Kch / Kmf in the subsurface
- Line of North - South Cross Section

**Drill Holes**

- 104 Approximate location of abandoned Bureau of Reclamation drill hole
- 0878 Active Well
- 0606 Decommissioned Well

**Scale and Orientation**

200 0 200 Feet

Geology adapted partly from  
Geologic Map of the Durango West Quadrangle,  
La Plata County, Colorado (Kirkham and others, 1999)

**D-2**