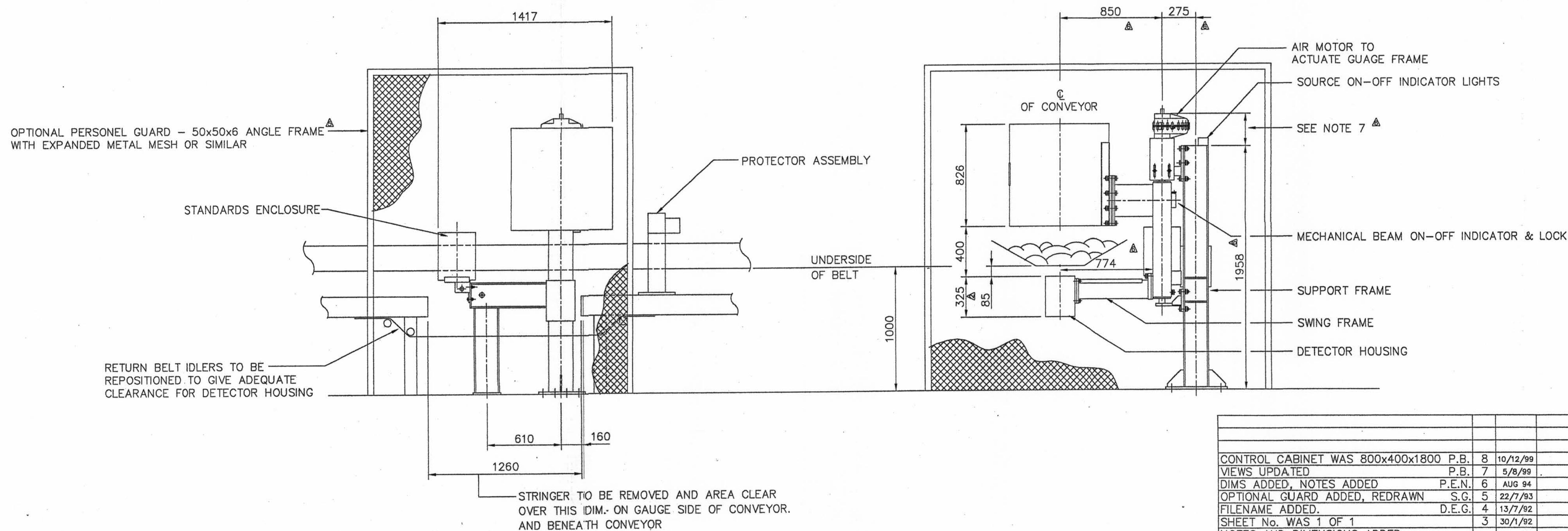
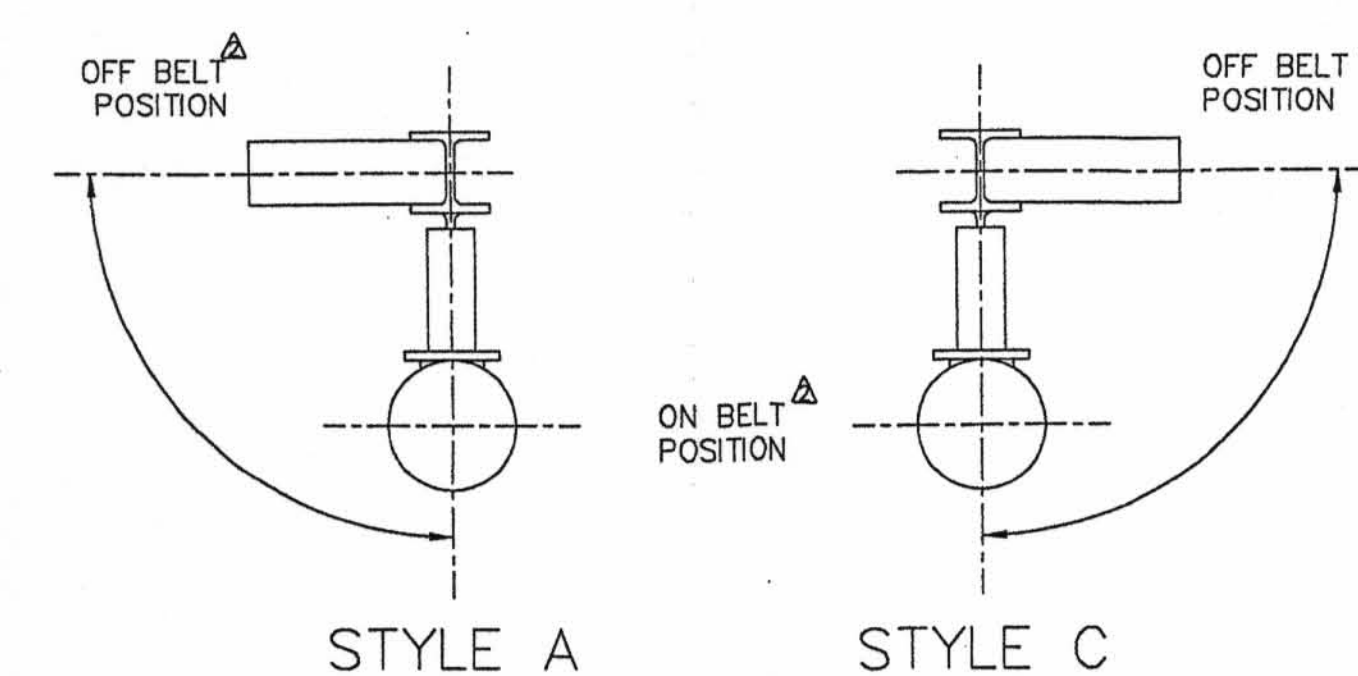


- NOTE : CLIENT TO SUPPLY THE FOLLOWING DATA TO ENABLE DESIGN OF SUPPORT FRAME AND PROTECTOR
1. DISTANCE OVER OUTSIDE OF STRINGERS
 2. BELT WIDTH AND ANGLE
 3. A GENERAL ARRANGEMENT FOR THE CONVEYOR SYSTEM BE SUPPLIED TO SCANTECH INCORPORATING THE ABOVE DIMENSIONS
 4. WHICH SIDE OF CONVEYOR UNIT IS TO BE INSTALLED AS DETAILED OR OPPOSITE SIDE?
 5. STYLE REQUIRED
 6. CONTROL CABINET TO BE 1000mm TO 5000mm FROM MACHINE.
 7. THIS DIMENSION VARIES DEPENDING ON THE MODEL ACTUATOR AND THE ADJUSTMENT OF THE GAUGE FRAME. THE MAXIMUM DIMENSIONS ARE : -MODEL 14 ACTUATOR 350
:-MODEL 16 ACTUATOR 475
 8. FOR FURTHER ESSENTIAL INFORMATION ON THE CORRECT INSTALLATION OF THIS ANALYSER PLEASE REFER TO THE SPECIFICATION, INSTALLATION AND OPERATION MANUALS.



				Scantech				PO BOX 64 UNLEY SOUTH AUSTRALIA 5061			
				INSTALLATION - CM100							
CONTROL CABINET WAS 800x400x1800				P.B.	8	10/12/99					
VIEWS UPDATED				P.B.	7	5/8/99					
DIMS ADDED, NOTES ADDED				P.E.N.	6	AUG 94					
OPTIONAL GUARD ADDED, REDRAWN				S.G.	5	22/7/93					
FILENAME ADDED				D.E.G.	4	13/7/92					
SHEET No. WAS 1 OF 1					3	30/1/92					
NOTES AND DIMENSIONS ADDED					2	26/4/91					
85 WAS 35, 800 WAS 600											
CHANGE				REV No.	DATE	CHANGE NOTICE No.	GENERAL TOLERANCE	±1 LINEAR ±1° ANGULAR ±0.5 HOLE CRS.	SCALE: 1:20	SHEET: 1 OF 2	REV No. 8
				DRAWN J.M.D. 23/2/90				DRAWING No. 9560-00-0010			
				USED ON CM100				DIMENSIONS IN MILLIMETRES UNLESS OTHERWISE STATED			