

15X

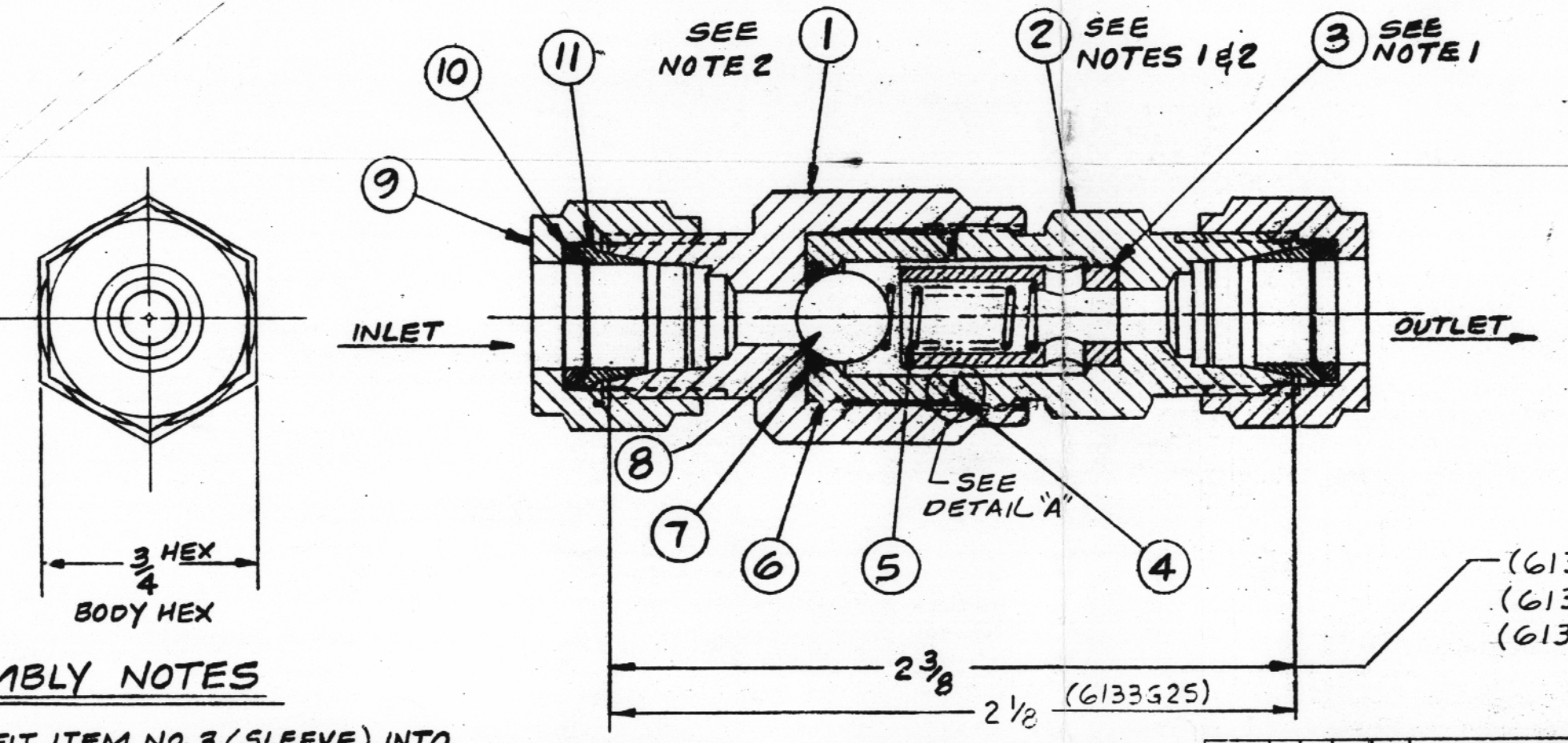
The image contained on this frame was made in the
normal and regular course of business by CP&L on
the date stated below. It is an accurate repro-
duction of the document submitted for microfilming.
Date: 3-21-91



FULL SIZE VIEW OF 6133G45

ROLL STAMP ASSEMBLY NO. 5000 PSI
5/64 HIGH CHARACTERS - CENTRAL

A	SEE ECN 2310	1-20-70	JE	WPM
B	SEE ECN 10465	11-4-80	JE	WPM
C	SEE ECN 13144	CP 4-21-87	WPM	
D	SEE ECN 13515 (1-2)	CP 8-31-88	WPM	
E	SEE ECN 13967	RMB 12-28-89	WPM	



IVSW-70-98

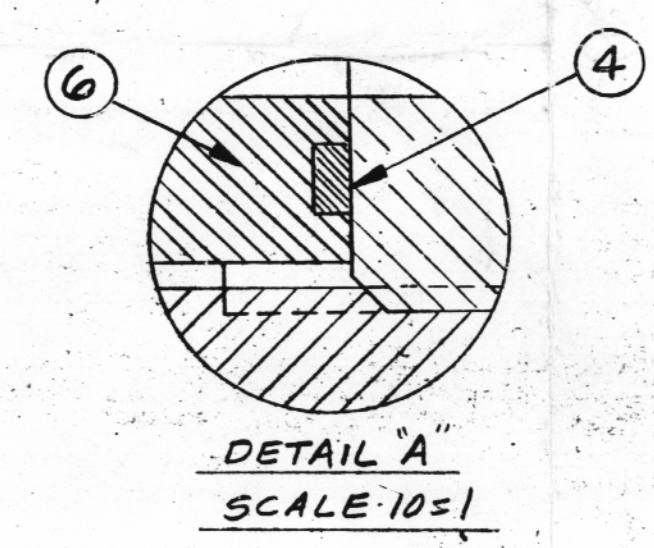
ASSEMBLY NOTES

1. PRESS FIT ITEM NO. 3 (SLEEVE) INTO ITEM NO. 2 (PLUG) TO BOTTOM
2. ASSEMBLE ITEM NO. 1 (BODY) TO ITEM NO. 2 (PLUG) USING 20 FT. LBS TORQUE

SHOWN- ASSY NO. 6133G45
SCALE-2=1

TECH DATA	
MAX OPERATING PRESS (PSIG)	5000
PROOF PRESS (PSIG)	10000
MIN BURST PRESS (PSIG)	20000
MAX OPERATING TEMP (°F)	-20° to +350°
LEAKAGE	0/1 MIN
FLUID	WOG
CV FACTOR	.45
CRACKING PRESS (PSI)	2
FLOW @ 10 PSI TO ATMOS. (SCFM)	7
FLOW @ 160 PSI TO ATMOS. (SCFM)	50
BASIC MATERIAL	SST 303
WEIGHT (OZ)	

SPECIFICATION	
CLEANING	HPS-1
ASSEMBLY & TEST	HPT-31



DETAIL "A"
SCALE-10=1

CP & L Dwg. No. H822-11073	
CP & L P.O. No. CP-220	
DWG. REV.	FIELD VERIFIED BY
0	JWP HOK
1	QLO QLO
2	3/19/91

QTY / ASSY	ITEM	PART NO.	TITLE	MATERIAL	MATERIAL SPEC	FINISH	FINISH SPEC
2	11 B	5FF-316	2 FERRULE, FRONT	SST 316			
2	11 B	6FF-316	2 FERRULE, FRONT	SST 316			
2	11 B	4FF-316	2 FERRULE, FRONT	SST 316			
2	11 B	2FF-316	2 FERRULE, FRONT	SST 316			
2	10	5FR-316	2 FERRULE, REAR	SST 316			
2	10 B	6FR-316	2 FERRULE, REAR	SST 316			
2	10 B	4FR-316	2 FERRULE, REAR	SST 316			
2	10 B	2FR-316	2 FERRULE, REAR	SST 316			
2	9 B	5N-316	2 NUT	SST 316			
2	9 B	6N-316	2 NUT	SST 316			
2	9 B	4N-316	2 NUT	SST 316			
2	9 B	2N-316	2 NUT	SST 316			
1	11 B	5106 A	2 BALL - 5/16 DIA	SST 302			
1	11 B	58-010-50	2 O-RING	FLUORO-ELASTOMER			
1	11 B	90548-2	2 SEAT RETAINER	SST 303			
1	11 B	90792-3	2 SPRING	SST 316			
1	11 B	90547-5	2 GASKET	TEFLON			
1	11 B	90021-3	2 SLEEVE	SST 316			
1	2 B	95188-100	2 PLUG	SST 303			
1	2 B	91509-2	2 PLUG	SST 303			
1	2 B	90820-2	2 PLUG	SST 303			
1	2 B	91511-2	2 PLUG	SST 303			
1	1 B	95187-100	2 BODY	SST 303			
1	1 B	91508-2	2 BODY	SST 303			
1	1 B	90850-2	2 BODY	SST 303			
1	1 B	91510-2	2 BODY	SST 303			

UNLESS OTHERWISE SPECIFIED:		DR	12-28-66
1. DIMENSIONS ARE IN INCHES	CHKD	WPM	1-10-67
2. TOLERANCES:	APPD	E	1-17-67
DECIMALS .0000 ± .0005			
.000 ± .005			
.00 ± .01			
ANGLES ± .5°			
3. MACHINED SURFACE FIN. 63			
4. GEOMETRIC TOLERANCES AND POSITIONING DETAIL AND FIN.			
5. STRENGTH AS PER SPEC.			
6. SPECIAL TREATMENT			

LIST OF MATERIAL	
VALVE, CHECK, BALL - GYROLOK CONN 2 PSI CRACKING PRESS SST 303	
6133G45	

D-3