

Table NDE-Partial-2-2
North Anna Unit 1
Examination Scan Coverage Estimates (Boron Injection Tank)
Weld 1

Beam Angle (degrees)	Exam Area	Scan Direction	Scan %
0	Base and Weld	0	82
45 and 60	Base	2	96
45 and 60	Base	5	97
45	Weld	2	58
45	Weld	5	76
45	Weld	7 & 8	77
60	Weld	2	61
60	Weld	5	76
60	Weld	7 & 8	77
			Avg. 78

Table NDE-Partial-2-3
North Anna Unit 1
Examination Scan Coverage Estimates (1-CH-279)
Weld 11

Scan Direction	Scan %
2	75
5	75
7	100
8	100
	Avg. 87

UT Scan Direction Definitions

- 2 - Axial scan, 180 degrees from isometric flow direction.
- 5 - Axial scan, the same direction as the isometric flow direction.
- 7 - Circumferential scan, clockwise rotation when viewing in the direction of isometric flow.
- 8 - Circumferential scan, counterclockwise rotation when viewing in the direction of isometric flow.

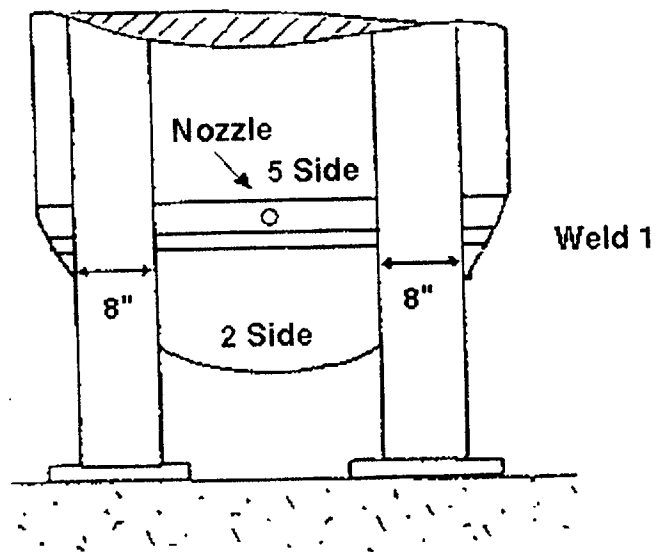
Table NDE-Partial-2-4
North Anna Unit 1
Examination Scan Coverage Estimates (1-RH-1)
Weld 64

Scan Direction	Scan %
2	45.5
5	40.5
7	100
8	100
Average	71.5

UT Scan Direction Definitions

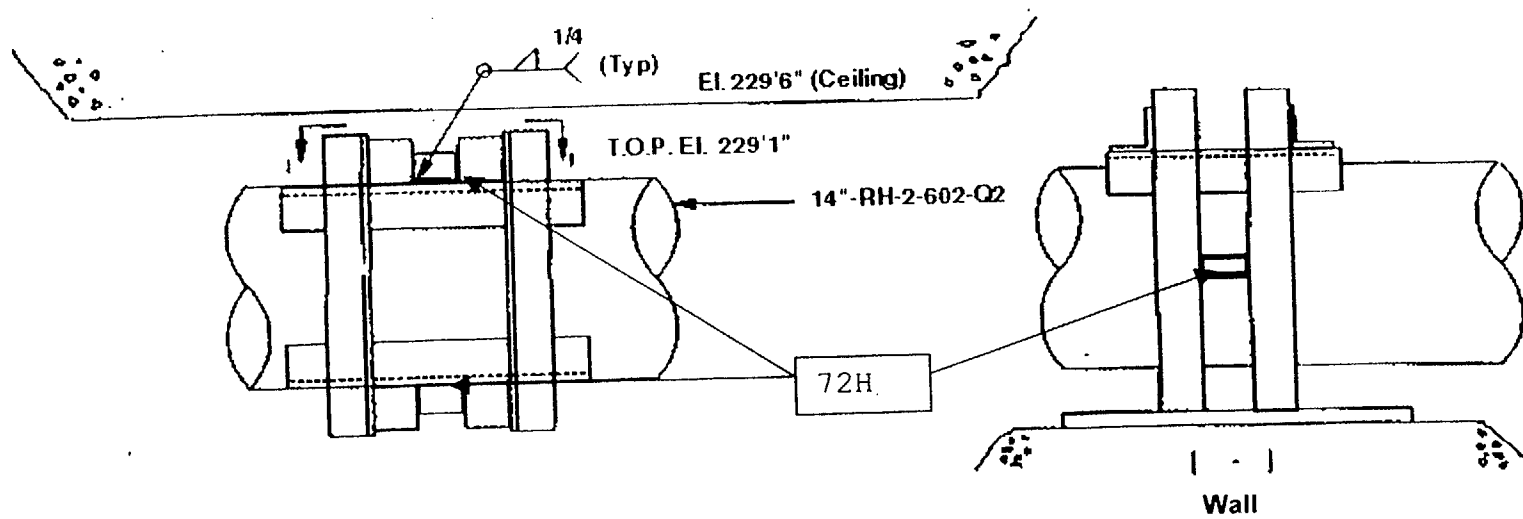
- 2 - Axial scan, 180 degrees from isometric flow direction.
- 5 - Axial scan, the same direction as the isometric flow direction.
- 7 - Circumferential scan, clockwise rotation when viewing in the direction of isometric flow.
- 8 - Circumferential scan, counterclockwise rotation when viewing in the direction of isometric flow.

Sketch NDE-Partial-2-1
North Anna Unit 1
1-SI-TK-2
Weld 1

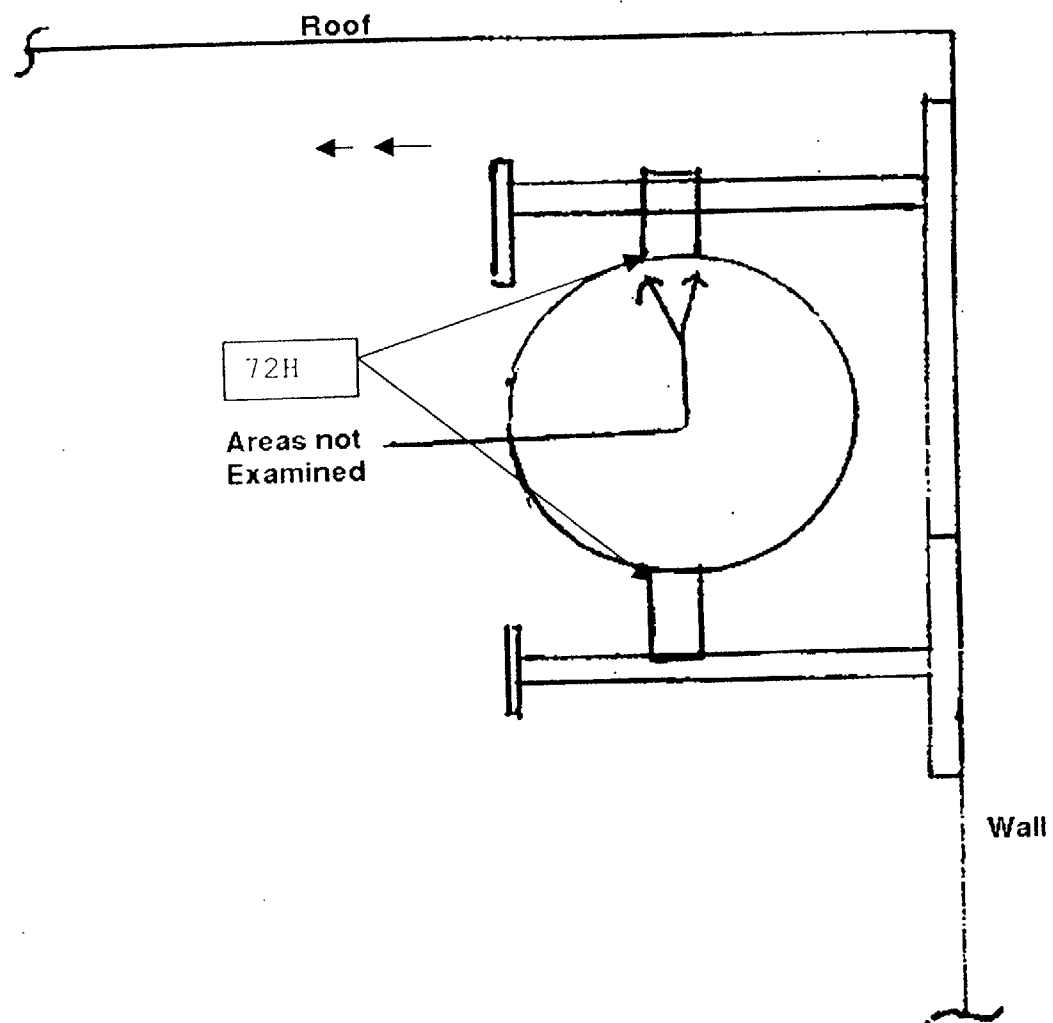


Sketch NDE-Partial-2-2
North Anna Unit 1
14"-RH-2-602-Q2
Weld 72H

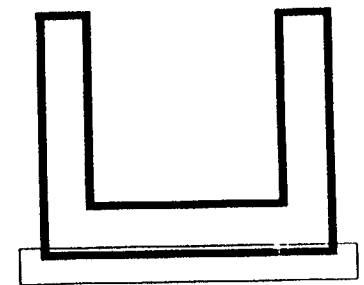
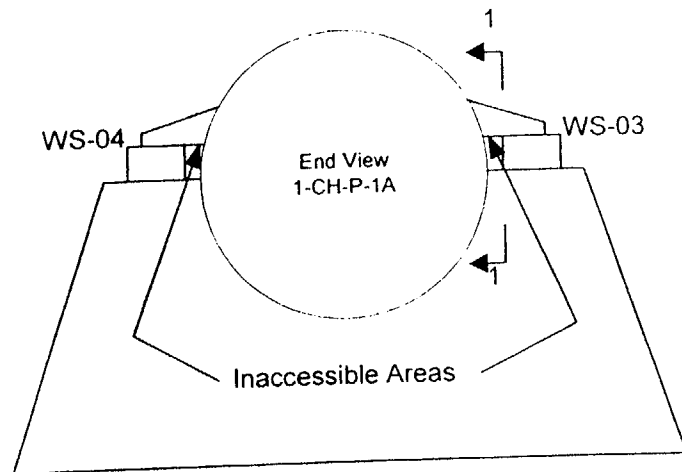
Top Lug of Integral Attachment is
Inaccessible for PT Examination



Sketch NDE-Partial-2-3
North Anna Unit 1
Weld 72H



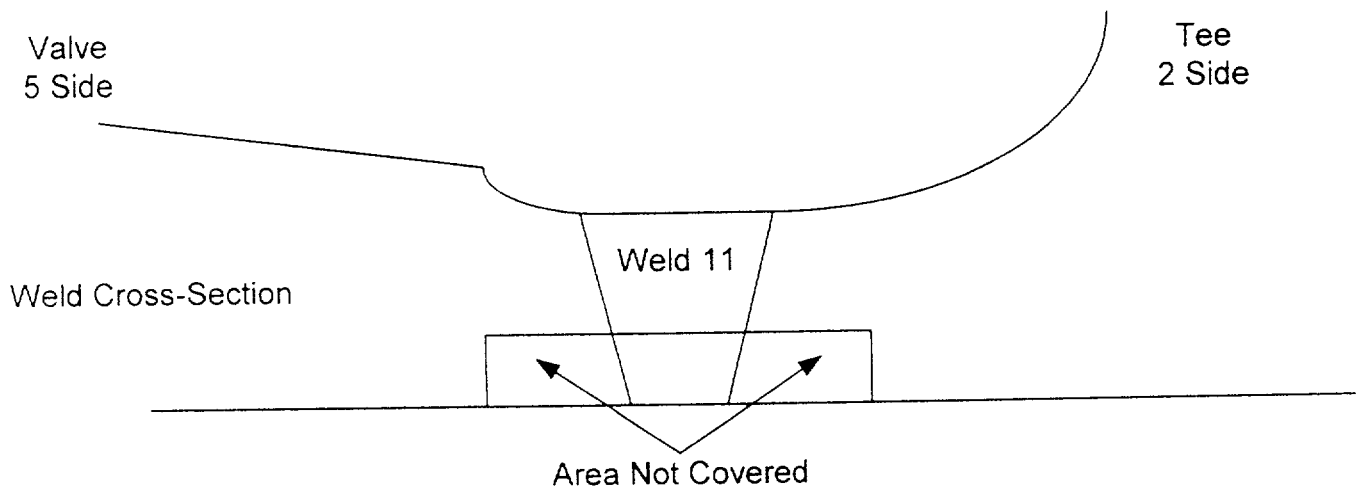
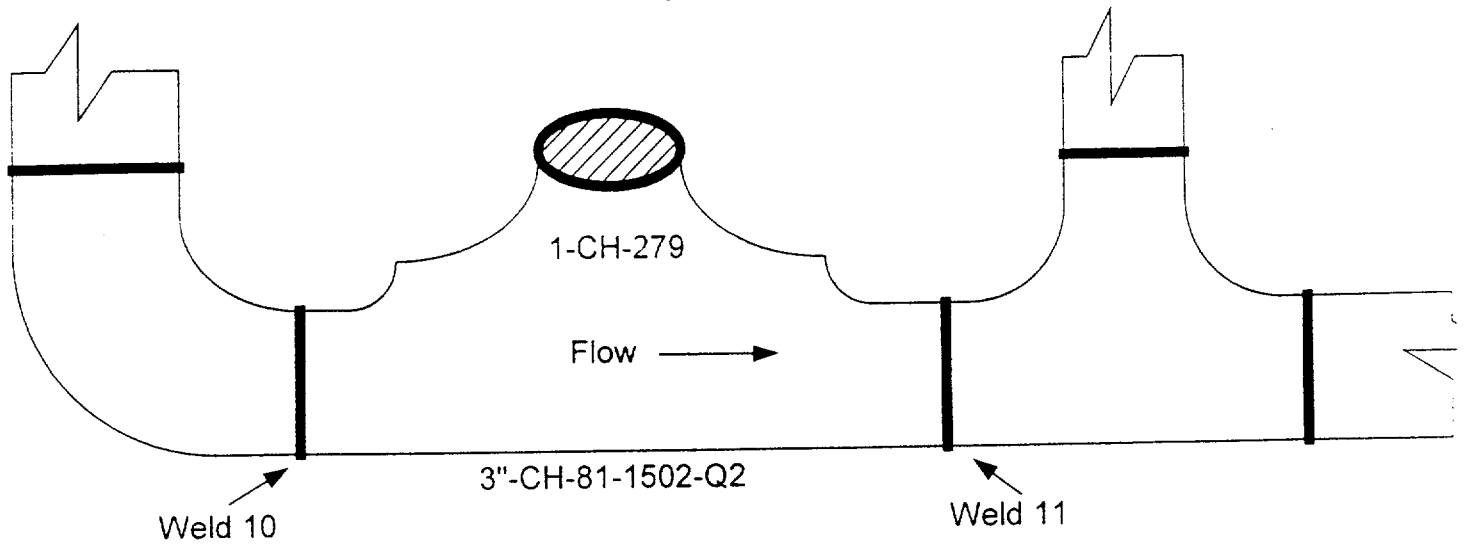
Sketch NDE-Partial-2-4
North Anna Unit 1
1-CH-P-1A
WS-03 and WS-04



Inaccessible Area is the area
inside the box

1 - 1

Sketch NDE-Partial-2-5
North Anna Unit 1
1-CH-279
Weld 11



Sketch NDE-Partial-2-6
North Anna Unit 1
14-RH-3-602-Q2
Weld 64

Valve

Elbow

Typical configuration
45° to 135° (Extradose)
100% Coverage

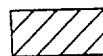
45°

Flow →

Typical configuration
225° to 315° (Intradose)
Scan 2 - 14%
Scan 5 - 12%

Typical configuration
315° to 0° to 45°
135° to 225°
Scan 2 - 68%
Scan 5 - 50%

Weld Cross-Sections



Areas not examined (not to scale)

Mr. David A. Christian
Senior Vice President
and Chief Nuclear Officer
Virginia Electric and Power Company
Innsbrook Technical Center
5000 Dominion Blvd.
Glen Allen, Virginia 23060-6711

SUBJECT: NORTH ANNA POWER STATION, UNIT 1 - ASME SECTION XI INSERVICE
INSPECTION (ISI) PROGRAM RELIEF REQUEST NDE-PARTIAL-2 (TAC NO.
MB1129)

Dear Mr. Christian:

The purpose of this letter is to grant you the relief you requested by NDE-Partial-2 for North Anna Power Station, Unit 1.

By letter dated January 29, 2001, as supplemented by a letter dated November 26, 2001, the Virginia Electric and Power Company requested relief from the requirements of the American Society of Mechanical Engineers (ASME) Boiler and Pressure Vessel Code, Section XI.

Our evaluation and conclusion are contained in the enclosed Safety Evaluation. The staff has concluded that the requirements of Section XI of the ASME Code are impractical to perform, and the examinations that have been performed provide reasonable assurance of structural integrity of the subject welds. The relief you requested is authorized pursuant to Title 10 of the Code of Federal Regulations Section 50.55a(g)(6)(i) for the third 10-year ISI interval.

The staff has completed its evaluation of this matter; therefore, we are closing TAC No. MB1129.

Sincerely,

Richard J. Laufer, Acting Chief, Section 1
Project Directorate II
Division of Licensing Project Management
Office of Nuclear Reactor Regulation

Docket No. 50-338

Enclosure: As stated

cc w/encl: See next page

Distribution:

TMcLellan	RidsNrrPMSMonarque (paper copy)	PDII-1 R/F
RidsNrrDlpmLpdii	RidsNrrLAEDunnington (paper copy)	GHill (2)
RidsOgcRp	RidsAcrcAcnwMailCenter	PUBLIC
RidsRgn2MailCenter	TMarsh	

Document Name: G:\PDII-1\NOANNA\north anna 1 nde partial 2.wpd
ADAMS ACCESSION NUMBER ML

*No major changes made to the SE

subject to required changes

OFFICE	PM:PDII/S1	LA:PDII/S2	DE:EMCB*	OGC NLO	SC/PDII/S1
NAME	SMonarque	EDunnington	TChan	A Fernandez	RLaufer
DATE	01/23/02	01/23/02	01/16/02	2 / 6 / 02	/ / 02

OFFICIAL RECORD COPY