

~~SECRET~~  
~~Do Not Remove From Office~~

CONDENSATE POT  
 (NORTH & SOUTH)

CONDENSATE POT  
 (NORTH & SOUTH)

RECEIVED

1979 MAY 15 AM 9 41

U.S. NUCLEAR REG. COMM.  
 ADVISORY COMMITTEE ON  
 REACTOR SAFEGUARDS

NORMAL  
 LEVEL

LO  
 LEVEL

LO LO  
 LEVEL

LO LO LO  
 LEVEL

TOP OF ACTIVE FUEL

161"

137"

87"

55"

H L  
 ELECTRIC  
 LEVEL  
 (ONE PER RACK)

H L  
 TRIPLE LOW  
 LEVEL  
 (TWO PER RACK)

L H  
 -100  
 -0

"YARWAY"  
 (TYPICAL OF 4 PER RACK)  
 RK01 & RK02

*Oyster Creek*

*Oyster Creek 20M H2O LEVEL  
 11:50 a.m.*

*02806*

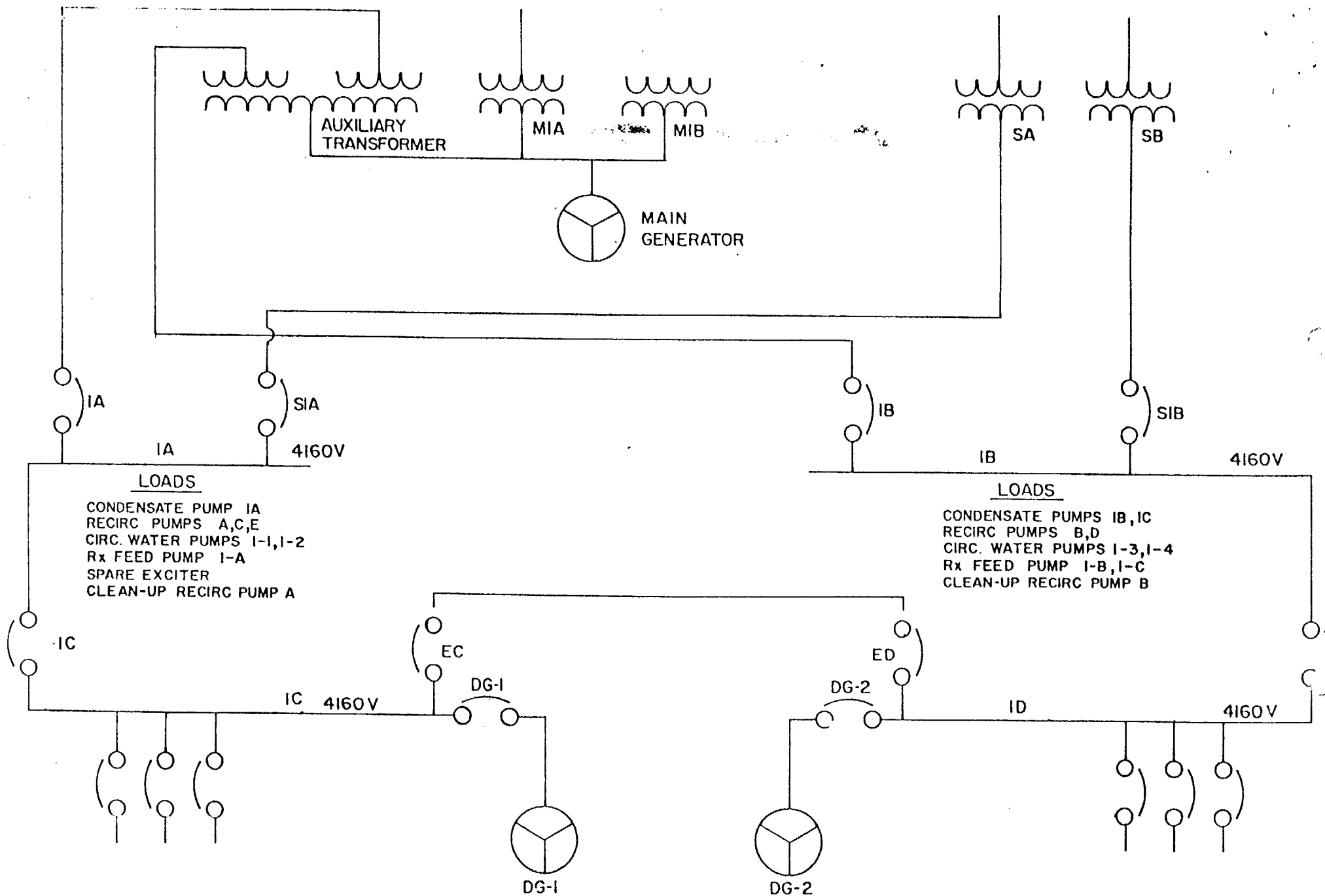
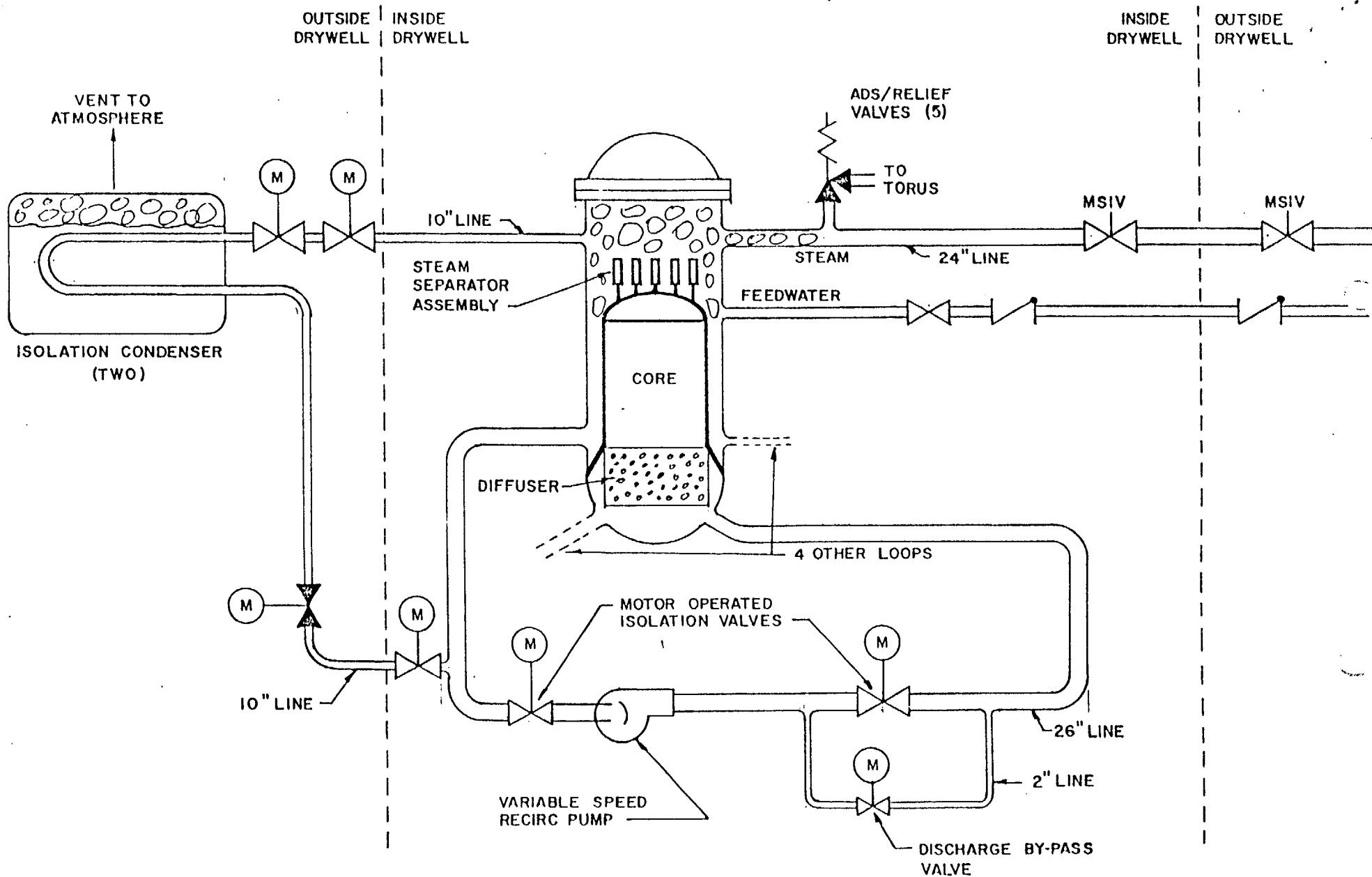


FIGURE 3



# SEQUENCE OF EVENTS

<u>TIME (SEC.)</u>	<u>EVENT</u>
0	REACTOR SCRAM/RECIRC. PUMP TRIP
13	TURBINE TRIP/LOSS OF FEEDWATER/CONDENSATE PUMPS
13.6	LOW WATER LEVEL SCRAM POINT
16.8	#2 RPS MOTOR GEN. SET TRIP
31	#2 DIESEL GENERATOR BREAKER CLOSED
43	MSIV CLOSED
76	B ISO. CONDENSER IN SERVICE
90	LOW WATER LEVEL ALARM CLEARED
172	LOW LOW LOW WATER LEVEL TRIP POINT
186	RECIRC. LOOP DISCHARGE VALVES NOTED CLOSED
1914	C RECIRC. PUMP STARTED THEN TRIPPED
2208	FEEDWATER PUMP STARTED
2340	RECIRC. PUMP STARTED
2700	RPS #2 RESTARTED/SCRAM RESET
3600	STARTUP TRANSFORMER SB RETURNED TO SERVICE