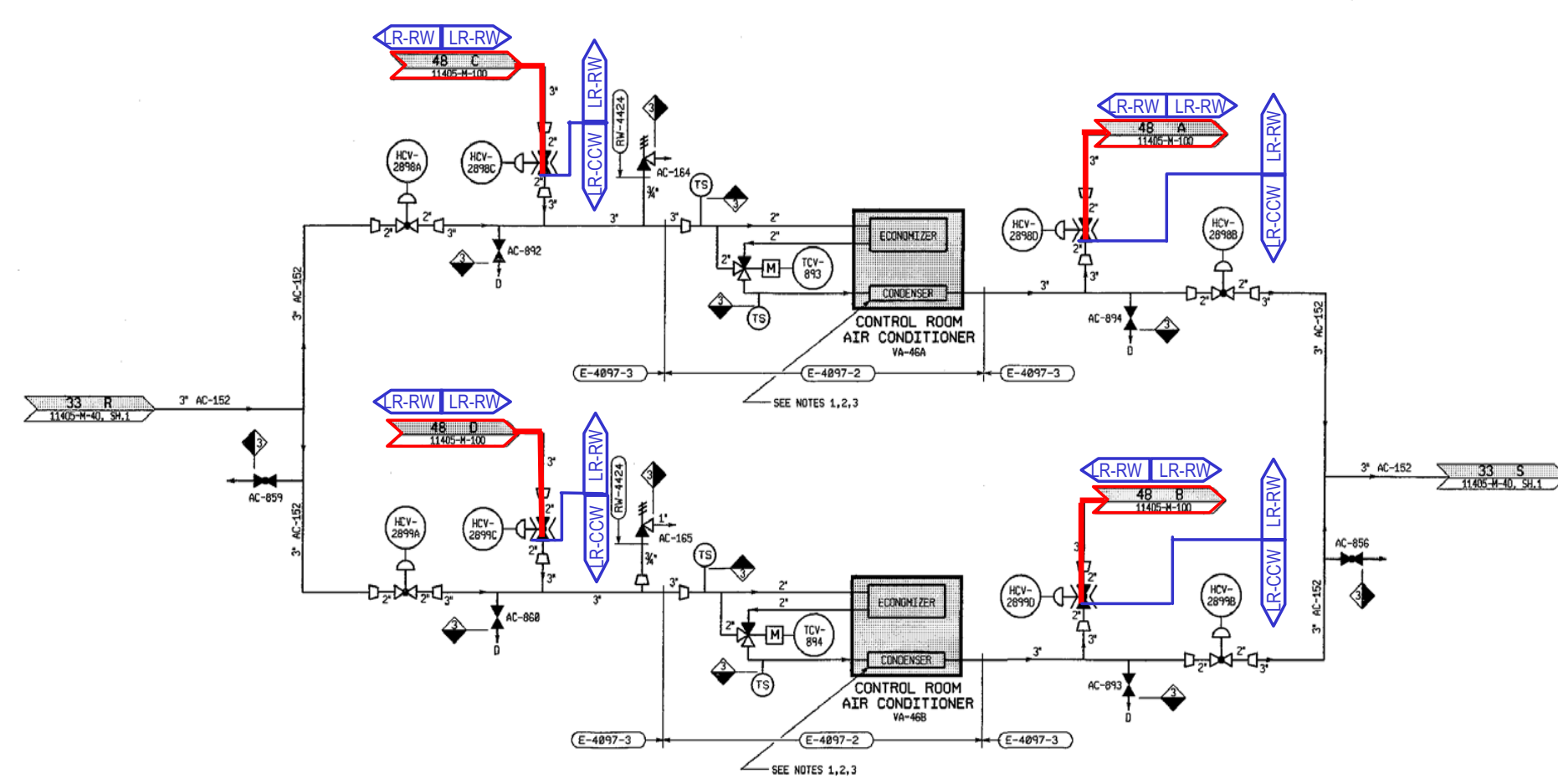


8 7 6 5 4 3 2 1

F  
E  
D  
C  
B  
A



- PORTIONS OF SYSTEM WITHIN LICENSE RENEWAL SCOPE ARE BOUNDED BY LR FLAGS.
- UNLESS OTHERWISE INDICATED, VENTS, DRAINS AND TEST CONNECTIONS THAT ARE WITHIN LICENSE RENEWAL BOUNDARIES ARE INCLUDED IN LR SCOPE TO THE DISCHARGE OF THE VALVE.
- ALL INSTRUMENTATION LINES NORMALLY OPEN TO THE PROCESS SYSTEM, THROUGH AND INCLUDING THE INSTRUMENT, ARE INCLUDED IN LR SCOPE.
- IN GENERAL, LR FLAGS ARE NOT SHOWN FOR VENTS, DRAINS, TEST CONNECTIONS OR INSTRUMENT LINES EXCEPT FOR CONTAINMENT PENETRATIONS.
- THE LICENSE RENEWAL BOUNDARY INCLUDES THE PIPING AND SUPPORTS UP TO THE FIRST SEISMIC SUPPORT PAST THE BLUE BOUNDARY FLAG.

- NOTES:
1. WATER COOLED CONDENSER IS NO LONGER REQUIRED FOR THE CONTROL ROOM AIR REFRIGERANT SYSTEM. MR-FC-M-828 INSTALLED AIR COOLED CONDENSERS TO REJECT THE CONTROL ROOM HEAT GAIN. SEE DRAWING D-4169, CONTROL ROOM HVAC REFRIGERANT LINE PIPING ISOMETRICS.
  2. THE CCW SYSTEM IS STILL REQUIRED FOR THE WATER SIDE ECONOMIZER.
  3. THE CCW STILL FLOWS THROUGH THE WATER-COOLED CONDENSER, THEREFORE, THE CCW FLOW RATE DOES NOT CHANGE.

EA-FC-00-100 DF 12/01

**FORT CALHOUN STATION**

**AUXILIARY COOLANT  
COMPONENT COOLING  
SYSTEM FLOW DIAGRAM  
P & ID**

DWG. 11405-M-10, SH.1	
REV. SH. 244	APVD 3/11/95
FILE 10440	REV 65

FOR INFORMATION ONLY

NOTE: THIS PRINT IS TO BE USED FOR THE FCS LICENSE RENEWAL PROJECT ONLY.  
IT MAY NOT REFLECT THE MOST CURRENT REVISION OF THIS DRAWING.