

10. HOLE LOCATIONS ARE IDENTICAL AT ALL ELEVATIONS EXCEPT FOR 'X' HOLES WHOSE LOCATIONS ALTERNATE AS SHOWN & ARE IN ALL CASES LOCATED IN A COUNTER CLOCKWISE DIRECTION FROM NEAREST Ø

6. MATERIAL: ASTM A-240 SP-1 TP-304 HRAP.

7. ALL MACHINED DIAMETERS ON A COMMON AXIS MUST BE (Ø) 0.007 IN UNLESS OTHERWISE NOTED.

8. STOCK: MILL TOLERANCE PER SECTION II OF THE ASME BOILER & PRESSURE VESSEL CODE.

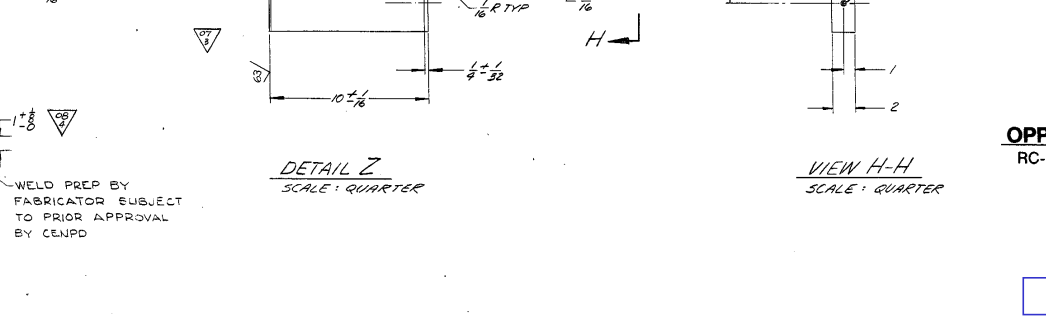
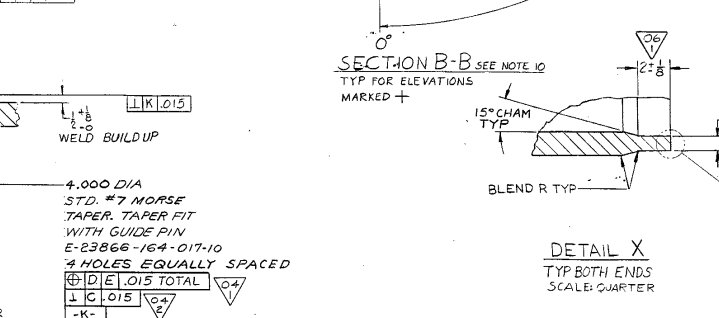
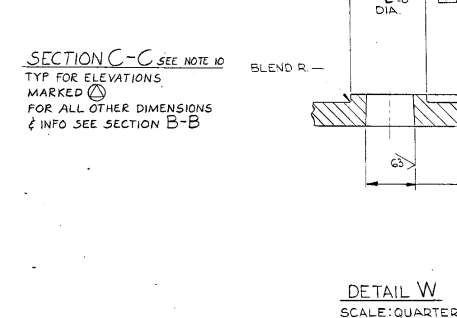
9. ALL DIMENSIONS SHOWN ARE FINISHED DIMENSIONS AND DO NOT INCLUDE ALLOWANCES FOR MACHINING, WELDING, AND SUBSEQUENT ASSEMBLY.

4. DIMENSIONING AND TOLERANCING PER ASME Y14.5-1994.

3. \* INDICATES AS BUILT DIMENSIONS ARE TO BE RECORDED PER CENPD SPEC. 23866-16-40-1.

2. PRODUCT TO BE IN ACCORDANCE WITH CENPD SPEC. 23866-16-40-1.

1. CENTERLINE (—C—) IS DEFINED AS PASSING THRU THE TRUE CENTERS OF DIAS (A), (B), DATUMS (D), (E) ARE PERPENDICULAR PLANES WHOSE POINT OF INTERSECTION PASSES THRU (C).



ALL ITEMS DEPICTED ON THIS DRAWING ARE WITHIN LICENSE RENEWAL SCOPE.

BILL OF MATERIALS				
QUANTITIES ARE FOR				
GROUP NO. & QUANTITY	ITEM	NAME	PIECE NO.	MATERIAL
6 5 4 3 2 1	1	CORE SUPPORT BARREL CENTER SECTION E-23866-164-016	SEE NOTE 6	

OPPD TAG NUMBER RC-7A E-23866-164-015

EA-FC-00-134 DF 12/01

FILE 21411

OMAHA PUBLIC POWER DISTRICT			
FORT CALHOUN UNIT NO. 1			
REV.	DESCRIPTION	DATE	BY
1	TO 1/8" DIA. DETAIL Z REMOVED 4 MM. (A) ADDED 1/16" DIA. ADDED 1/16" DIA. PER REV REQ. 23866-173.	12/01/01	WJ
2	ADDED ACCELEROMETER INSTAL. HOLES IN SECTION A-A. (A) ADDED SECTION D-D. (A) ADDED SECTION E-E. PER REV REQ. 23866-345.	12/01/01	WJ
3	DETAIL X, WAS 1/8". PER REV REQ. 23866-354.	12/01/01	WJ
4	GENERAL REVISED PER REV REQ. 23866-75.	12/01/01	WJ
5	GENERAL REVISED PER REV REQ. 23866-77.	12/01/01	WJ
6	GENERAL REVISED PER REV REQ. 23866-79.	12/01/01	WJ
7	GENERAL REVISED PER REV REQ. 23866-81.	12/01/01	WJ
8	GENERAL REVISED PER REV REQ. 23866-83.	12/01/01	WJ
9	GENERAL REVISED PER REV REQ. 23866-85.	12/01/01	WJ
10	GENERAL REVISED PER REV REQ. 23866-87.	12/01/01	WJ
11	GENERAL REVISED PER REV REQ. 23866-89.	12/01/01	WJ
12	GENERAL REVISED PER REV REQ. 23866-91.	12/01/01	WJ
13	GENERAL REVISED PER REV REQ. 23866-93.	12/01/01	WJ
14	GENERAL REVISED PER REV REQ. 23866-95.	12/01/01	WJ
15	GENERAL REVISED PER REV REQ. 23866-97.	12/01/01	WJ
16	GENERAL REVISED PER REV REQ. 23866-99.	12/01/01	WJ
17	GENERAL REVISED PER REV REQ. 23866-101.	12/01/01	WJ
18	GENERAL REVISED PER REV REQ. 23866-103.	12/01/01	WJ
19	GENERAL REVISED PER REV REQ. 23866-105.	12/01/01	WJ
20	GENERAL REVISED PER REV REQ. 23866-107.	12/01/01	WJ
21	GENERAL REVISED PER REV REQ. 23866-109.	12/01/01	WJ
22	GENERAL REVISED PER REV REQ. 23866-111.	12/01/01	WJ
23	GENERAL REVISED PER REV REQ. 23866-113.	12/01/01	WJ
24	GENERAL REVISED PER REV REQ. 23866-115.	12/01/01	WJ
25	GENERAL REVISED PER REV REQ. 23866-117.	12/01/01	WJ
26	GENERAL REVISED PER REV REQ. 23866-119.	12/01/01	WJ
27	GENERAL REVISED PER REV REQ. 23866-121.	12/01/01	WJ
28	GENERAL REVISED PER REV REQ. 23866-123.	12/01/01	WJ
29	GENERAL REVISED PER REV REQ. 23866-125.	12/01/01	WJ
30	GENERAL REVISED PER REV REQ. 23866-127.	12/01/01	WJ
31	GENERAL REVISED PER REV REQ. 23866-129.	12/01/01	WJ
32	GENERAL REVISED PER REV REQ. 23866-131.	12/01/01	WJ
33	GENERAL REVISED PER REV REQ. 23866-133.	12/01/01	WJ
34	GENERAL REVISED PER REV REQ. 23866-135.	12/01/01	WJ
35	GENERAL REVISED PER REV REQ. 23866-137.	12/01/01	WJ
36	GENERAL REVISED PER REV REQ. 23866-139.	12/01/01	WJ
37	GENERAL REVISED PER REV REQ. 23866-141.	12/01/01	WJ
38	GENERAL REVISED PER REV REQ. 23866-143.	12/01/01	WJ
39	GENERAL REVISED PER REV REQ. 23866-145.	12/01/01	WJ
40	GENERAL REVISED PER REV REQ. 23866-147.	12/01/01	WJ
41	GENERAL REVISED PER REV REQ. 23866-149.	12/01/01	WJ
42	GENERAL REVISED PER REV REQ. 23866-151.	12/01/01	WJ
43	GENERAL REVISED PER REV REQ. 23866-153.	12/01/01	WJ
44	GENERAL REVISED PER REV REQ. 23866-155.	12/01/01	WJ
45	GENERAL REVISED PER REV REQ. 23866-157.	12/01/01	WJ
46	GENERAL REVISED PER REV REQ. 23866-159.	12/01/01	WJ
47	GENERAL REVISED PER REV REQ. 23866-161.	12/01/01	WJ
48	GENERAL REVISED PER REV REQ. 23866-163.	12/01/01	WJ
49	GENERAL REVISED PER REV REQ. 23866-165.	12/01/01	WJ
50	GENERAL REVISED PER REV REQ. 23866-167.	12/01/01	WJ
51	GENERAL REVISED PER REV REQ. 23866-169.	12/01/01	WJ
52	GENERAL REVISED PER REV REQ. 23866-171.	12/01/01	WJ
53	GENERAL REVISED PER REV REQ. 23866-173.	12/01/01	WJ
54	GENERAL REVISED PER REV REQ. 23866-175.	12/01/01	WJ
55	GENERAL REVISED PER REV REQ. 23866-177.	12/01/01	WJ
56	GENERAL REVISED PER REV REQ. 23866-179.	12/01/01	WJ
57	GENERAL REVISED PER REV REQ. 23866-181.	12/01/01	WJ
58	GENERAL REVISED PER REV REQ. 23866-183.	12/01/01	WJ
59	GENERAL REVISED PER REV REQ. 23866-185.	12/01/01	WJ
60	GENERAL REVISED PER REV REQ. 23866-187.	12/01/01	WJ
61	GENERAL REVISED PER REV REQ. 23866-189.	12/01/01	WJ
62	GENERAL REVISED PER REV REQ. 23866-191.	12/01/01	WJ
63	GENERAL REVISED PER REV REQ. 23866-193.	12/01/01	WJ
64	GENERAL REVISED PER REV REQ. 23866-195.	12/01/01	WJ
65	GENERAL REVISED PER REV REQ. 23866-197.	12/01/01	WJ
66	GENERAL REVISED PER REV REQ. 23866-199.	12/01/01	WJ
67	GENERAL REVISED PER REV REQ. 23866-201.	12/01/01	WJ
68	GENERAL REVISED PER REV REQ. 23866-203.	12/01/01	WJ
69	GENERAL REVISED PER REV REQ. 23866-205.	12/01/01	WJ
70	GENERAL REVISED PER REV REQ. 23866-207.	12/01/01	WJ
71	GENERAL REVISED PER REV REQ. 23866-209.	12/01/01	WJ
72	GENERAL REVISED PER REV REQ. 23866-211.	12/01/01	WJ
73	GENERAL REVISED PER REV REQ. 23866-213.	12/01/01	WJ
74	GENERAL REVISED PER REV REQ. 23866-215.	12/01/01	WJ
75	GENERAL REVISED PER REV REQ. 23866-217.	12/01/01	WJ
76	GENERAL REVISED PER REV REQ. 23866-219.	12/01/01	WJ
77	GENERAL REVISED PER REV REQ. 23866-221.	12/01/01	WJ
78	GENERAL REVISED PER REV REQ. 23866-223.	12/01/01	WJ
79	GENERAL REVISED PER REV REQ. 23866-225.	12/01/01	WJ
80	GENERAL REVISED PER REV REQ. 23866-227.	12/01/01	WJ
81	GENERAL REVISED PER REV REQ. 23866-229.	12/01/01	WJ
82	GENERAL REVISED PER REV REQ. 23866-231.	12/01/01	WJ
83	GENERAL REVISED PER REV REQ. 23866-233.	12/01/01	WJ
84	GENERAL REVISED PER REV REQ. 23866-235.	12/01/01	WJ
85	GENERAL REVISED PER REV REQ. 23866-237.	12/01/01	WJ
86	GENERAL REVISED PER REV REQ. 23866-239.	12/01/01	WJ
87	GENERAL REVISED PER REV REQ. 23866-241.	12/01/01	WJ
88	GENERAL REVISED PER REV REQ. 23866-243.	12/01/01	WJ
89	GENERAL REVISED PER REV REQ. 23866-245.	12/01/01	WJ
90	GENERAL REVISED PER REV REQ. 23866-247.	12/01/01	WJ
91	GENERAL REVISED PER REV REQ. 23866-249.	12/01/01	WJ
92	GENERAL REVISED PER REV REQ. 23866-251.	12/01/01	WJ
93	GENERAL REVISED PER REV REQ. 23866-253.	12/01/01	WJ
94	GENERAL REVISED PER REV REQ. 23866-255.	12/01/01	WJ
95	GENERAL REVISED PER REV REQ. 23866-257.	12/01/01	WJ
96	GENERAL REVISED PER REV REQ. 23866-259.	12/01/01	WJ
97	GENERAL REVISED PER REV REQ. 23866-261.	12/01/01	WJ
98	GENERAL REVISED PER REV REQ. 23866-263.	12/01/01	WJ
99	GENERAL REVISED PER REV REQ. 23866-265.	12/01/01	WJ
100	GENERAL REVISED PER REV REQ. 23866-267.	12/01/01	WJ

FOR INFORMATION ONLY

NOTE: THIS PRINT IS TO BE USED FOR THE FCS LICENSE RENEWAL PROJECT ONLY. IT MAY NOT REFLECT THE MOST CURRENT REVISION OF THIS DRAWING.