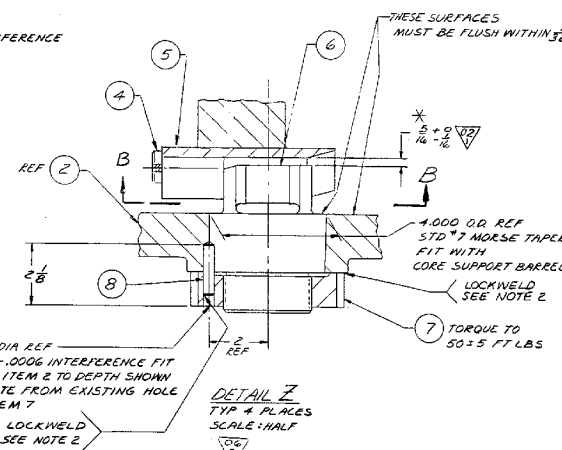
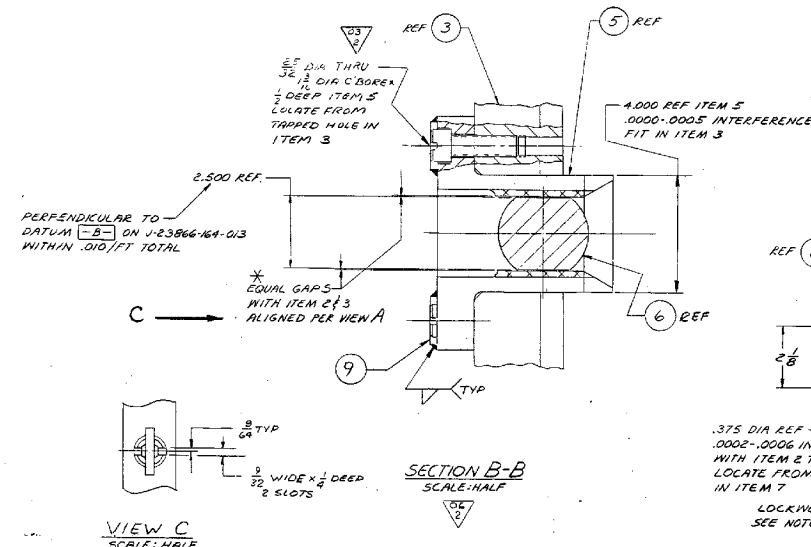
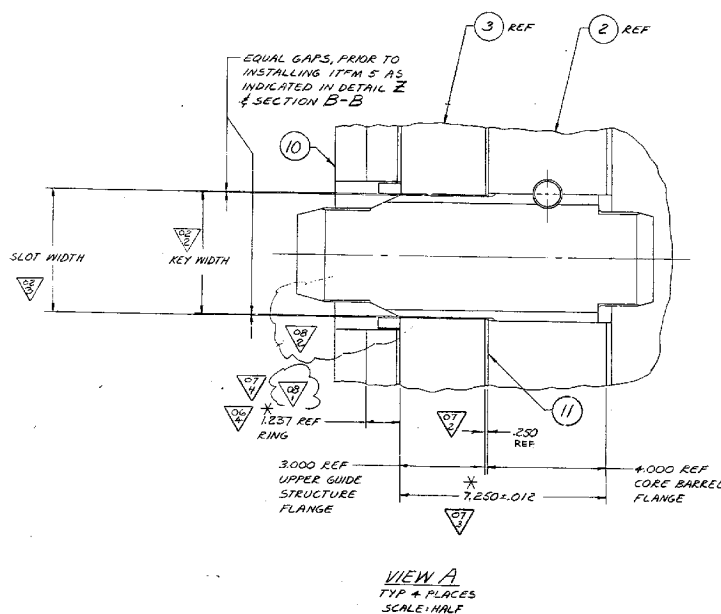


1 INTERNALS ASSEMBLY



OPPD TAG NUMBER  
RC-1

EA-FC-00-134 DF 12/01

OMAHA PUBLIC POWER DISTRICT  
FORT CALHOUN UNIT NO. 1

GROUP NO. & QUANTITY	ITEM NO.	NAME	PIECE NO.	MATERIAL	REMARKS
1	1	INTERNALS ASSY	J-23866-164-003		
2	2	CORE SUPPORT ASSY	J-23866-164-001		
3	3	UPPER GUIDE STRUCTURE ASSY	J-23866-164-001		
4	4	SOCKET HEAD CAP SCREW	J-23866-164-001	SEE NOTE 2 1/4" DIA X 1/2" LG	
5	5	ALIGNMENT LUG	J-23866-164-001		
6	6	GUIDE PIN	J-23866-164-001		
7	7	PIN	J-23866-164-001		
8	8	DONUT PIN	J-23866-164-001	SEE NOTE 2 3/8" DIA X 1/2" LG	
9	9	LOCKING BAR	J-23866-164-001	1/2" DIA X 1/2" LG	
10	10	HOLD DOWN RING	J-23866-164-001	1/2" DIA X 1/2" LG	
11	11	RING SHIM	J-23866-164-001		

3. MATERIAL ASTM A-193-66, SPI-1
4. MATERIAL ASTM A-276-65, SPI-2
- WITH ITEMS 4 & 3 ALIGNED AS SHOWN BY VIEW A INSPECT & RECORD DISPLACEMENT OF CENTERLINES OF FUEL ALIGNMENT PLATE AND CORE SUPPORT PLATE
6. MACHINE BOTTOM SURFACE AT EDGE OF CORE SUPPORT PLATE, IF NECESSARY, TO OBTAIN THIS DIMENSION DO NOT MACHINE MORE THAN 3/8" FROM THE EDGE OR REDUCE PLATE EDGE THICKNESS TO LESS THAN 1.750
- SLIGHTLY COAT THREADS WITH NEOLUBE PRIOR TO TORQUING
- \* INDICATES AS BUILT DIMENSIONS TO BE RECORDED PER CENPD SPEC 23866-16-40-1
2. PRODUCT TO BE IN ACCORDANCE WITH CENPD SPEC 23866-16-40-1
1. DIMENSIONING & TOLERANCING PER USAS1 1/4-5-1966

ALL ITEMS DEPICTED ON THIS DRAWING ARE WITHIN LICENSE RENEWAL SCOPE.

FOR INFORMATION ONLY

NOTE: THIS PRINT IS TO BE USED FOR THE FCS LICENSE RENEWAL PROJECT ONLY. IT MAY NOT REFLECT THE MOST CURRENT REVISION OF THIS DRAWING.