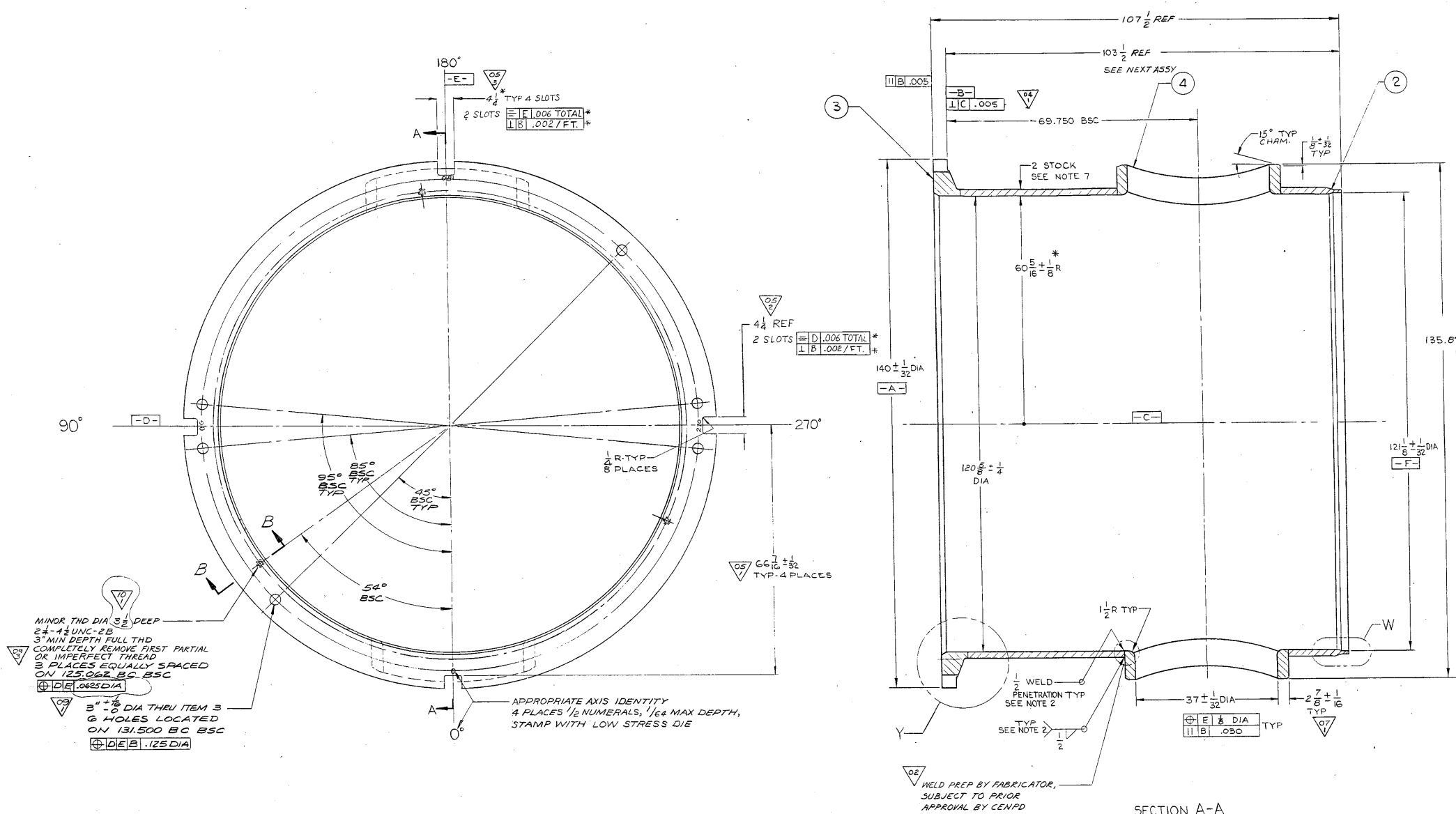


BILL OF MATERIALS				
QUANTITIES ARE FOR				
GROUP NO. & QUANTITY	ITEM NO.	NAME	PIECE NO.	MATERIAL
6 5 4 3 2 1	1	CORE SUPPORT BARREL UPPER SECTION	E-23866-164-014	
	2	UPPER CYLINDER		SEE NOTE 9
	3	FLANGE		SEE NOTE 8
	4	NOZZLE		SEE NOTE 7



9. MATERIAL: ASTM A-240 SPI-1 TP-304 HRAP.
8. MATERIAL: ASTM-A182 SPI-1 F-304.08 COBALT MAX, 04 CARBON MIN. U.T. TESTED PER SECTION II, AS ME BOILER & PRESSURE VESSEL CODE.
7. STOCK WILL TOLERANCE PER SECT II, AS ME BOILER & PRESSURE VESSEL CODE.
6. ALL DIMENSIONS SHOWN ARE FINISHED DIMENSIONS, AND DO NOT INCLUDE ALLOWANCES FOR MACHINING, WELDING, OR SUBSEQUENT ASSEMBLY.
5. DIMENSIONING AND TOLERANCING PER USAS1 Y14.5-1994.
4. ALL MACHINED DIAS. ON A COMMON AXIS MUST BE $\pm .010$ TIR UNLESS OTHERWISE NOTED.
3. * INDICATES AS BUILT DIMENSIONS ARE TO BE RECORDED PER CNPD SPEC 23866-16-40-1.
2. PRODUCT TO BE IN ACCORDANCE WITH CNPD SPEC 23866-16-40-1.
1. CENTERLINE $\overline{C-C}$ IS DEFINED AS PASSING THRU THE TRUE CENTERS OF DIAMETERS $\overline{A-A}$ & $\overline{F-F}$. DATUMS $\overline{D-D}$ & $\overline{E-E}$ ARE DEFINED AS PERPENDICULAR PLANES WHOSE POINT OF INTERSECTION PASSES THRU $\overline{C-C}$.

OPPD TAG NUMBER
RC-1
RC-7A

E-23866-164-014
10

EA-FC-00-XXX DF 12/01

OMAHA PUBLIC POWER DISTRICT FORT CALHOUN UNIT NO. 1		PREPARED UNDER AEC CONTRACT 23866	CENP CONTRACT 23866
NEXT ASSY: J-23866-164-013 FINAL ASSY: SUPERSEDED: DO NOT SCALE D'WG. (CALC. WT.) SCALE: 1" = 4" (ACT. WT.) THE DRAWING IS THE PROPERTY OF COMBINATION ENGINEERING, INC. AND IS NOT TO BE REPRODUCED, OR USED FOR ANY PURPOSES, WITHOUT THE WRITTEN PERMISSION OF SAID COMPANY.		CORE SUPPORT BARREL UPPER SECTION E-23866-164-014 10	

REV.	DESCRIPTION	REV.	DESCRIPTION	REV.	DESCRIPTION	REV.	DESCRIPTION
1	ZONE C-B WAS 3/4 DEEP & TIVE POSITION TOL. WAS .125 DIA. (2) SECT. B-D WAS DIA. PER REV REQ 23866-384	2	IN PLAN VIEW: ADDED THREE 5/16" ROUNDED HOLES & 5/16" DIA HOLES & RELATED DIMENSIONS PER REV REQ 23866-256	3	ZONE C-B WAS 3/4 DEEP & TIVE POSITION TOL. WAS .125 DIA. (2) SECT. B-D WAS DIA. PER REV REQ 23866-384	4	ZONE C-B WAS 3/4 DEEP & TIVE POSITION TOL. WAS .125 DIA. (2) SECT. B-D WAS DIA. PER REV REQ 23866-384
5	ADDED 1/4 DIA HOLES PER SECTION B-B 3) ZONE C-B: ADDED REF TO TIVE REMOVAL & REMOVED REF TO CAV PER REV REQ 23866-242	6	ZONE C-B WAS 3/4 DEEP & TIVE POSITION TOL. WAS .125 DIA. (2) SECT. B-D WAS DIA. PER REV REQ 23866-384	7	ZONE C-B WAS 3/4 DEEP & TIVE POSITION TOL. WAS .125 DIA. (2) SECT. B-D WAS DIA. PER REV REQ 23866-384	8	ZONE C-B WAS 3/4 DEEP & TIVE POSITION TOL. WAS .125 DIA. (2) SECT. B-D WAS DIA. PER REV REQ 23866-384
9	ZONE C-B WAS 3/4 DEEP & TIVE POSITION TOL. WAS .125 DIA. (2) SECT. B-D WAS DIA. PER REV REQ 23866-384	10	ZONE C-B WAS 3/4 DEEP & TIVE POSITION TOL. WAS .125 DIA. (2) SECT. B-D WAS DIA. PER REV REQ 23866-384	11	ZONE C-B WAS 3/4 DEEP & TIVE POSITION TOL. WAS .125 DIA. (2) SECT. B-D WAS DIA. PER REV REQ 23866-384	12	ZONE C-B WAS 3/4 DEEP & TIVE POSITION TOL. WAS .125 DIA. (2) SECT. B-D WAS DIA. PER REV REQ 23866-384

ALL ITEMS DEPICTED ON THIS DRAWING ARE WITHIN LICENSE RENEWAL SCOPE.

FOR INFORMATION ONLY

NOTE: THIS PRINT IS TO BE USED FOR THE FCS LICENSE RENEWAL PROJECT ONLY. IT MAY NOT REFLECT THE MOST CURRENT REVISION OF THIS DRAWING.