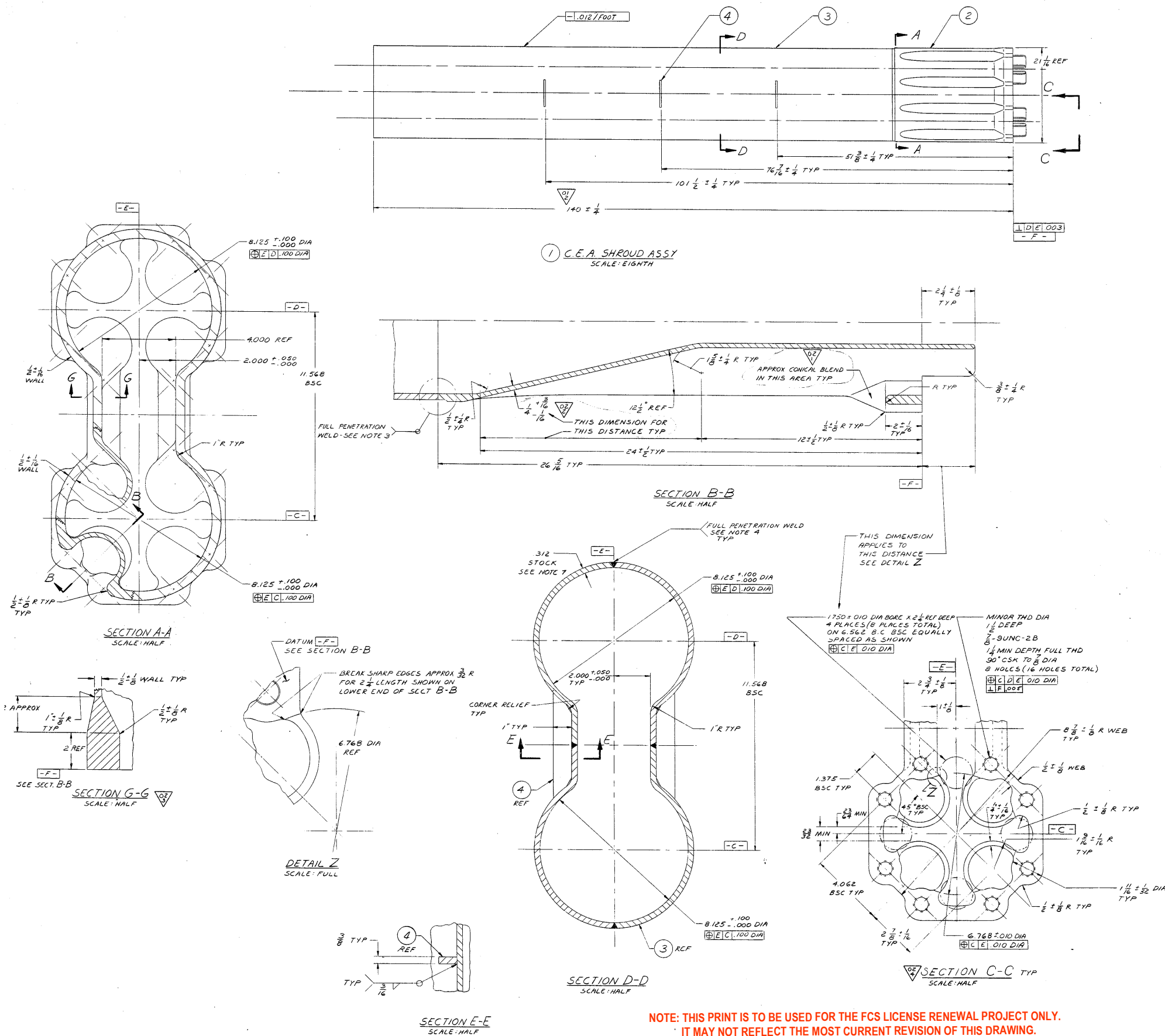


BILL OF MATERIALS				QUANTITIES AND FOR			
GROUP NO.	QUANTITY	UNIT	NAME	PRICE NO.	UNIT PRICE	TOTAL	REMARKS
1	1	EA	C.E.A. SHROUD ASSY (DUAL)	E-23866-164-00			
2	2	EA	BASE				
3	3	EA	TUBE				
4	4	EA	BRACE				



7. STOCK MILL TOLERANCE PER SECT. II OF THE ASME BOILER & PRESSURE VESSEL CODE
6. DATUM PLANES  $\square$   $\square$   $\square$  ARE PERPENDICULAR TO DATUM PLANE  $\square$
5. CASTING SURFACES SHALL BE R50
4. ITEM 3 MAY BE FABRICATED FROM 1/2 OR 4 SEGMENTS AND WELDED AT INDICATED LOCATION
3. WELD PREP SUBJECT TO APPROVAL BY CNPD. NO DISCONTINUITIES WILL BE PERMITTED AT WELD JUNCTION I.D. & O.D.
2. PRODUCT TO BE IN ACCORDANCE WITH CNPD SPEC E3866-16-40-1
1. DIMENSIONING & TOLERANCING PER USAS 114.5-1-1966

**CERTIFIED FOR CONSTRUCTION**

OMAHA PUBLIC POWER DISTRICT  
FORT CALHOUN UNIT NO. 1

11534

PREPARED UNDER AEC CONTRACT E-23866-164-040

CEND CONTRACT E-23866-164-040

11534

DRAWN BY: J. SWAN

CHECKED BY: J. SWAN

APPROVED BY: J. SWAN

DATE: 11/15/84

SCALE: AS NOTED

DO NOT SCALE DWG. CALC. WT.

THIS DRAWING IS THE PROPERTY OF CONSTRUCTION ENGINEERING, INC.

WINDING, CONDUCTOR

AND IS NOT TO BE REPRODUCED OR USED TO FURNISH ANY INFORMATION FOR MAKING OF DRAWINGS OR APPARATUS EXCEPT BY THE VIDEO FOR BY AGREEMENT WITH SAID COMPANY.

SHEET OF REV

11534

11534

11534

11534

11534

11534

11534

11534

11534

ALL ITEMS DEPICTED ON THIS DRAWING ARE WITHIN LICENSE RENEWAL SCOPE.

FOR INFORMATION ONLY

NOTE: THIS PRINT IS TO BE USED FOR THE FCS LICENSE RENEWAL PROJECT ONLY. IT MAY NOT REFLECT THE MOST CURRENT REVISION OF THIS DRAWING.

REV.	DESCRIPTION	BY	DATE	APP.	REV.	DESCRIPTION	BY	DATE	APP.
1	PER REV. REQ. E3866-164-005	AW	11/15/84	AW	1	1) ZONE G-6-1 HAS 158 ± .000 DIM PER REV. REQ. E3866-164-005	AW	11/15/84	AW
2					2	2) ZONE G-6-1 HAS 158 ± .000 DIM PER REV. REQ. E3866-164-005	AW	11/15/84	AW
3					3	3) ZONE G-6-1 HAS 158 ± .000 DIM PER REV. REQ. E3866-164-005	AW	11/15/84	AW
4					4	4) ZONE G-6-1 HAS 158 ± .000 DIM PER REV. REQ. E3866-164-005	AW	11/15/84	AW
5					5	5) ZONE G-6-1 HAS 158 ± .000 DIM PER REV. REQ. E3866-164-005	AW	11/15/84	AW
6					6	6) ZONE G-6-1 HAS 158 ± .000 DIM PER REV. REQ. E3866-164-005	AW	11/15/84	AW
7					7	7) ZONE G-6-1 HAS 158 ± .000 DIM PER REV. REQ. E3866-164-005	AW	11/15/84	AW
8					8	8) ZONE G-6-1 HAS 158 ± .000 DIM PER REV. REQ. E3866-164-005	AW	11/15/84	AW
9					9	9) ZONE G-6-1 HAS 158 ± .000 DIM PER REV. REQ. E3866-164-005	AW	11/15/84	AW
10					10	10) ZONE G-6-1 HAS 158 ± .000 DIM PER REV. REQ. E3866-164-005	AW	11/15/84	AW