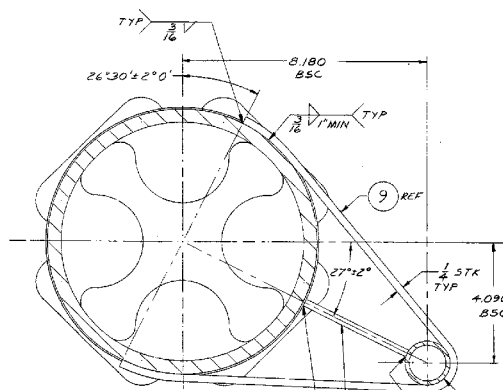
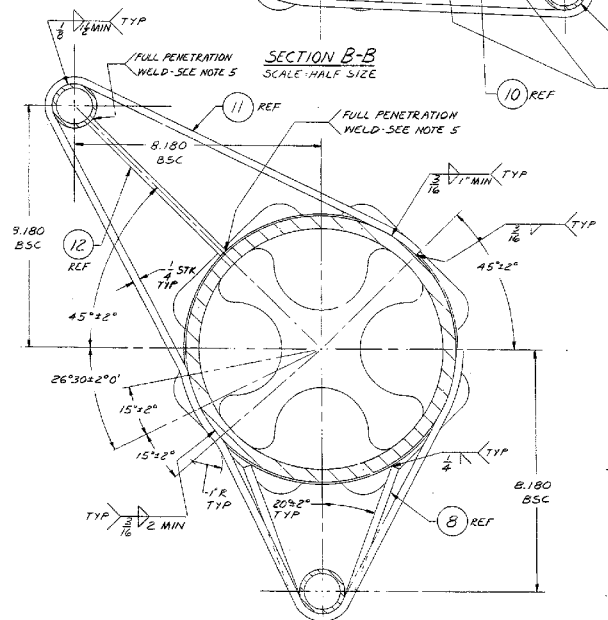


SECTION A-A
SCALE: HALF SIZE



SECTION B-B
SCALE: HALF SIZE



SECTION C-C
SCALE: HALF SIZE

SECTION G-G
SCALE: HALF SIZE

SECTION F-F
SCALE: HALF SIZE

SECTION E-E
SCALE: HALF SIZE

SECTION D-D
SCALE: HALF SIZE

SECTION C-C
SCALE: HALF SIZE

SECTION B-B
SCALE: HALF SIZE

SECTION A-A
SCALE: HALF SIZE

SECTION G-G
SCALE: HALF SIZE

SECTION F-F
SCALE: HALF SIZE

SECTION E-E
SCALE: HALF SIZE

SECTION D-D
SCALE: HALF SIZE

SECTION C-C
SCALE: HALF SIZE

SECTION B-B
SCALE: HALF SIZE

SECTION A-A
SCALE: HALF SIZE

SECTION G-G
SCALE: HALF SIZE

SECTION F-F
SCALE: HALF SIZE

SECTION E-E
SCALE: HALF SIZE

SECTION D-D
SCALE: HALF SIZE

SECTION C-C
SCALE: HALF SIZE

SECTION B-B
SCALE: HALF SIZE

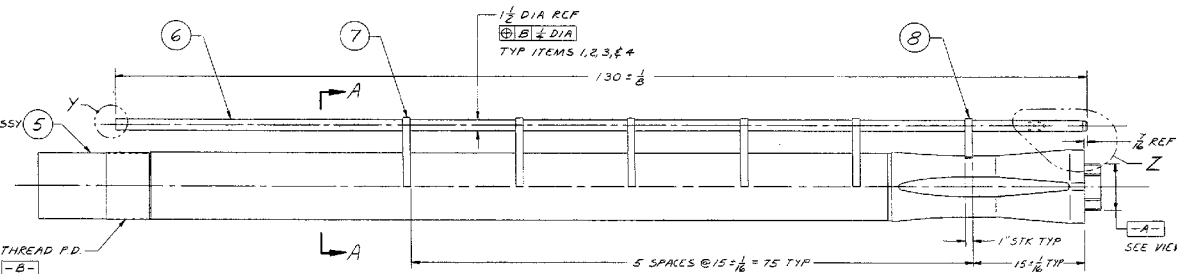
SECTION A-A
SCALE: HALF SIZE

SECTION G-G
SCALE: HALF SIZE

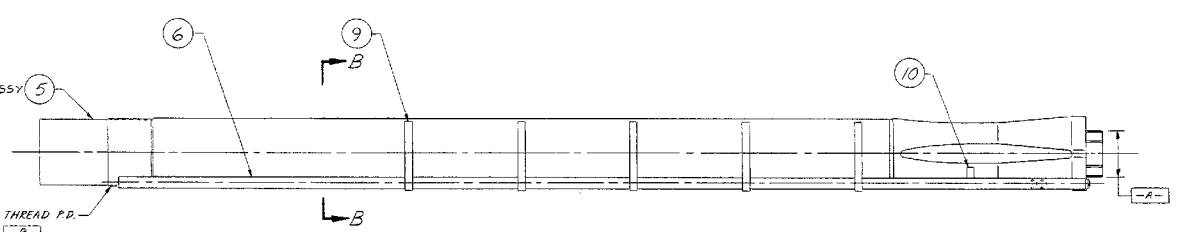
SECTION F-F
SCALE: HALF SIZE

SECTION E-E
SCALE: HALF SIZE

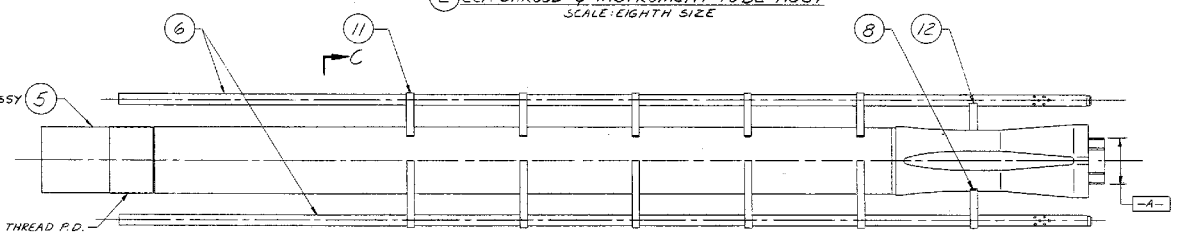
SECTION D-D
SCALE: HALF SIZE



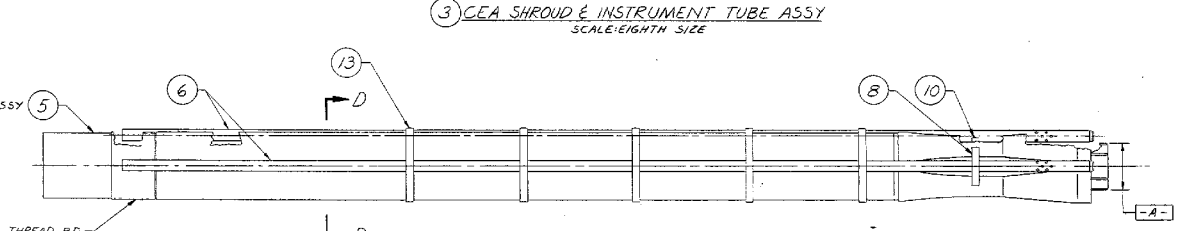
1 CEA SHROUD & INSTRUMENT TUBE ASSY
SCALE: EIGHTH SIZE



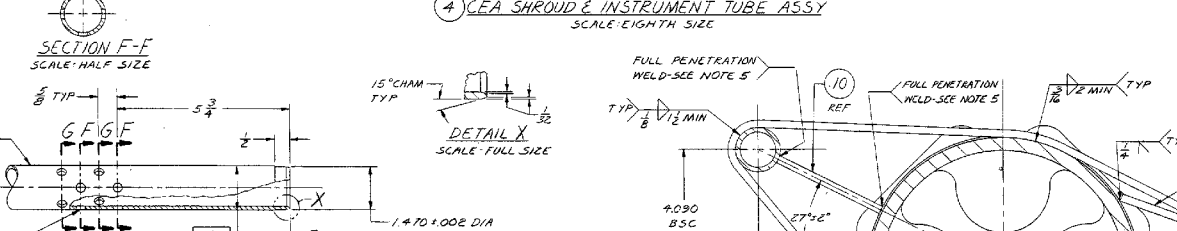
2 CEA SHROUD & INSTRUMENT TUBE ASSY
SCALE: EIGHTH SIZE



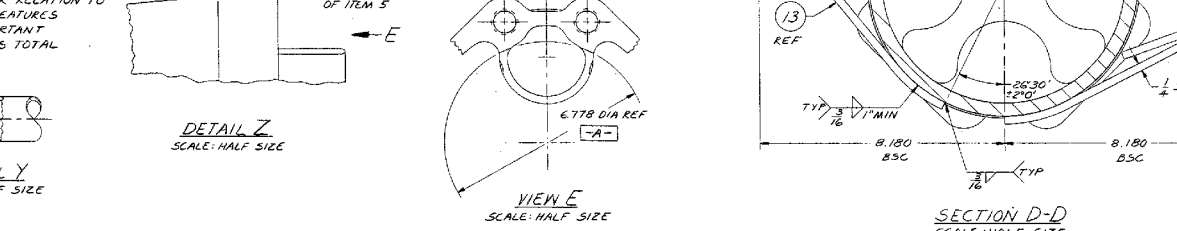
3 CEA SHROUD & INSTRUMENT TUBE ASSY
SCALE: EIGHTH SIZE



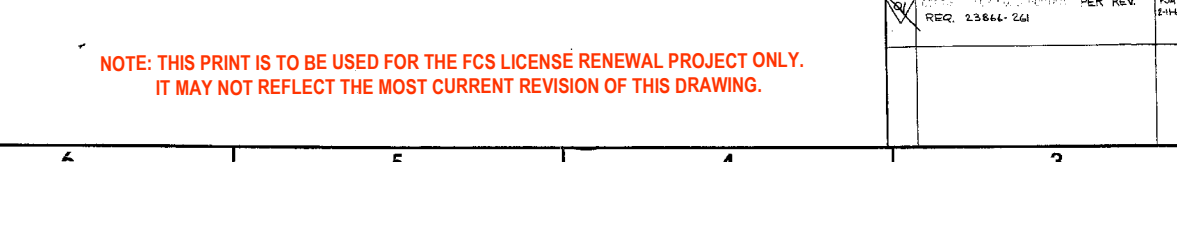
4 CEA SHROUD & INSTRUMENT TUBE ASSY
SCALE: EIGHTH SIZE



5 CEA SHROUD & INSTRUMENT TUBE ASSY
SCALE: EIGHTH SIZE



6 CEA SHROUD & INSTRUMENT TUBE ASSY
SCALE: EIGHTH SIZE



7 CEA SHROUD & INSTRUMENT TUBE ASSY
SCALE: EIGHTH SIZE



8 CEA SHROUD & INSTRUMENT TUBE ASSY
SCALE: EIGHTH SIZE

BILL OF MATERIALS				
QUANTITIES ARE FOR				
GROUP NO. & QUANTITY	ITEM NO.	NAME	PIECE NO.	REMARKS
6 5 4 3 2 1	1	CEA SHROUD & INSTRUMENT TUBE ASSY	1	
	2	CEA SHROUD & INSTRUMENT TUBE ASSY	2	
	3	CEA SHROUD & INSTRUMENT TUBE ASSY	3	
	4	CEA SHROUD & INSTRUMENT TUBE ASSY	4	
	5	CEA SHROUD (SINGLE)	5	
	6	INSTRUMENT TUBE	6	
	7	SUPPORT	7	
	8	SUPPORT	8	
	9	SUPPORT	9	
	10	SUPPORT	10	
	11	SUPPORT	11	
	12	SUPPORT	12	
	13	SUPPORT	13	

- 6 MIN ID OF ITEM 6 AFTER WELDING MUST NOT BE LESS THAN 1/8 DIA AND MUST PASS A BALL GAGE OF THIS DIA.
- WELD PREP BY FABRICATOR SUBJECT TO APPROVAL BY CNPD.
- STOCK MILL TOLERANCE PER SECT. II OF THE ASME BOILER & PRESSURE VESSEL CODE.
- NO RADIOGRAPHIC INSPECTION REQUIRED ON WELDS.
- PRODUCT TO BE IN ACCORDANCE WITH CNPD SPEC 23866-16-40-1.
- DIMENSIONING & TOLERANCING PER USAS 114.5-1966.

C-23866-164-031
E-23866-164-031

CERTIFIED FOR
CONSTRUCTION

EAFC-88-134 OF 1281

ALL ITEMS DEPICTED ON THIS
DRAWING ARE WITHIN LICENSE
RENEWAL SCOPE.

NOTE: THIS PRINT IS TO BE USED FOR THE FCS LICENSE RENEWAL PROJECT ONLY.
IT MAY NOT REFLECT THE MOST CURRENT REVISION OF THIS DRAWING.

OMAHA PUBLIC POWER DISTRICT FORT CALHOUN UNIT NO. 1		PREPARED UNDER REC. CONTRACT 23866	11520
REV.	DESCRIPTION	DATE	BY
1	REVISION 1/1/64 PER REV.	1/1/64	W. J. SPARK
2	REVISION 2/1/64 PER REV.	2/1/64	W. J. SPARK
3	REVISION 3/1/64 PER REV.	3/1/64	W. J. SPARK
4	REVISION 4/1/64 PER REV.	4/1/64	W. J. SPARK
5	REVISION 5/1/64 PER REV.	5/1/64	W. J. SPARK
6	REVISION 6/1/64 PER REV.	6/1/64	W. J. SPARK
7	REVISION 7/1/64 PER REV.	7/1/64	W. J. SPARK
8	REVISION 8/1/64 PER REV.	8/1/64	W. J. SPARK
9	REVISION 9/1/64 PER REV.	9/1/64	W. J. SPARK
10	REVISION 10/1/64 PER REV.	10/1/64	W. J. SPARK
11	REVISION 11/1/64 PER REV.	11/1/64	W. J. SPARK
12	REVISION 12/1/64 PER REV.	12/1/64	W. J. SPARK
13	REVISION 1/1/65 PER REV.	1/1/65	W. J. SPARK
14	REVISION 2/1/65 PER REV.	2/1/65	W. J. SPARK
15	REVISION 3/1/65 PER REV.	3/1/65	W. J. SPARK
16	REVISION 4/1/65 PER REV.	4/1/65	W. J. SPARK
17	REVISION 5/1/65 PER REV.	5/1/65	W. J. SPARK
18	REVISION 6/1/65 PER REV.	6/1/65	W. J. SPARK
19	REVISION 7/1/65 PER REV.	7/1/65	W. J. SPARK
20	REVISION 8/1/65 PER REV.	8/1/65	W. J. SPARK
21	REVISION 9/1/65 PER REV.	9/1/65	W. J. SPARK
22	REVISION 10/1/65 PER REV.	10/1/65	W. J. SPARK
23	REVISION 11/1/65 PER REV.	11/1/65	W. J. SPARK
24	REVISION 12/1/65 PER REV.	12/1/65	W. J. SPARK
25	REVISION 1/1/66 PER REV.	1/1/66	W. J. SPARK
26	REVISION 2/1/66 PER REV.	2/1/66	W. J. SPARK
27	REVISION 3/1/66 PER REV.	3/1/66	W. J. SPARK
28	REVISION 4/1/66 PER REV.	4/1/66	W. J. SPARK
29	REVISION 5/1/66 PER REV.	5/1/66	W. J. SPARK
30	REVISION 6/1/66 PER REV.	6/1/66	W. J. SPARK
31	REVISION 7/1/66 PER REV.	7/1/66	W. J. SPARK
32	REVISION 8/1/66 PER REV.	8/1/66	W. J. SPARK
33	REVISION 9/1/66 PER REV.	9/1/66	W. J. SPARK
34	REVISION 10/1/66 PER REV.	10/1/66	W. J. SPARK
35	REVISION 11/1/66 PER REV.	11/1/66	W. J. SPARK
36	REVISION 12/1/66 PER REV.	12/1/66	W. J. SPARK
37	REVISION 1/1/67 PER REV.	1/1/67	W. J. SPARK
38	REVISION 2/1/67 PER REV.	2/1/67	W. J. SPARK
39	REVISION 3/1/67 PER REV.	3/1/67	W. J. SPARK
40	REVISION 4/1/67 PER REV.	4/1/67	W. J. SPARK
41	REVISION 5/1/67 PER REV.	5/1/67	W. J. SPARK
42	REVISION 6/1/67 PER REV.	6/1/67	W. J. SPARK
43	REVISION 7/1/67 PER REV.	7/1/67	W. J. SPARK
44	REVISION 8/1/67 PER REV.	8/1/67	W. J. SPARK
45	REVISION 9/1/67 PER REV.	9/1/67	W. J. SPARK
46	REVISION 10/1/67 PER REV.	10/1/67	W. J. SPARK
47	REVISION 11/1/67 PER REV.	11/1/67	W. J. SPARK
48	REVISION 12/1/67 PER REV.	12/1/67	W. J. SPARK
49	REVISION 1/1/68 PER REV.	1/1/68	W. J. SPARK
50	REVISION 2/1/68 PER REV.	2/1/68	W. J. SPARK
51	REVISION 3/1/68 PER REV.	3/1/68	W. J. SPARK
52	REVISION 4/1/68 PER REV.	4/1/68	W. J. SPARK
53	REVISION 5/1/68 PER REV.	5/1/68	W. J. SPARK
54	REVISION 6/1/68 PER REV.	6/1/68	W. J. SPARK
55	REVISION 7/1/68 PER REV.	7/1/68	W. J. SPARK
56	REVISION 8/1/68 PER REV.	8/1/68	W. J. SPARK
57	REVISION 9/1/68 PER REV.	9/1/68	W. J. SPARK
58	REVISION 10/1/68 PER REV.	10/1/68	W. J. SPARK
59	REVISION 11/1/68 PER REV.	11/1/68	W. J. SPARK
60	REVISION 12/1/68 PER REV.	12/1/68	W. J. SPARK
61	REVISION 1/1/69 PER REV.	1/1/69	W. J. SPARK
62	REVISION 2/1/69 PER REV.	2/1/69	W. J. SPARK
63	REVISION 3/1/69 PER REV.	3/1/69	W. J. SPARK
64	REVISION 4/1/69 PER REV.	4/1/69	W. J. SPARK
65	REVISION 5/1/69 PER REV.	5/1/69	W. J. SPARK
66	REVISION 6/1/69 PER REV.	6/1/69	W. J. SPARK
67	REVISION 7/1/69 PER REV.	7/1/69	W. J. SPARK
68	REVISION 8/1/69 PER REV.	8/1/69	W. J. SPARK
69	REVISION 9/1/69 PER REV.	9/1/69	W. J. SPARK
70	REVISION 10/1/69 PER REV.	10/1/69	W. J. SPARK
71	REVISION 11/1/69 PER REV.	11/1/69	W. J. SPARK
72	REVISION 12/1/69 PER REV.	12/1/69	W. J. SPARK
73	REVISION 1/1/70 PER REV.	1/1/70	W. J. SPARK
74	REVISION 2/1/70 PER REV.	2/1/70	W. J. SPARK
75	REVISION 3/1/70 PER REV.	3/1/70	W. J. SPARK
76	REVISION 4/1/70 PER REV.	4/1/70	W. J. SPARK
77	REVISION 5/1/70 PER REV.	5/1/70	W. J. SPARK
78	REVISION 6/1/70 PER REV.	6/1/70	W. J. SPARK
79	REVISION 7/1/70 PER REV.	7/1/70	W. J. SPARK
80	REVISION 8/1/70 PER REV.	8/1/70	W. J. SPARK
81	REVISION 9/1/70 PER REV.	9/1/70	W. J. SPARK
82	REVISION 10/1/70 PER REV.	10/1/70	W. J. SPARK
83	REVISION 11/1/70 PER REV.	11/1/70	W. J. SPARK
84	REVISION 12/1/70 PER REV.	12/1/70	W. J. SPARK
85	REVISION 1/1/71 PER REV.	1/1/71	W. J. SPARK
86	REVISION 2/1/71 PER REV.	2/1/71	W. J. SPARK
87	REVISION 3/1/71 PER REV.	3/1/71	W. J. SPARK
88	REVISION 4/1/71 PER REV.	4/1/71	W. J. SPARK
89	REVISION 5/1/71 PER REV.	5/1/71	W. J. SPARK
90	REVISION 6/1/71 PER REV.	6/1/71	W. J. SPARK
91	REVISION 7/1/71 PER REV.	7/1/71	W. J. SPARK
92	REVISION 8/1/71 PER REV.	8/1/71	W. J. SPARK
93	REVISION 9/1/71 PER REV.	9/1/71	W. J. SPARK
94	REVISION 10/1/71 PER REV.	10/1/71	W. J. SPARK
95	REVISION 11/1/71 PER REV.	11/1/71	W. J. SPARK
96	REVISION 12/1/71 PER REV.	12/1/71	W. J. SPARK
97	REVISION 1/1/72 PER REV.	1/1/72	W. J. SPARK
98	REVISION 2/1/72 PER REV.	2/1/72	W. J. SPARK
99	REVISION 3/1/72 PER REV.	3/1/72	W. J. SPARK
100	REVISION 4/1/72 PER REV.	4/1/72	W. J. SPARK
101	REVISION 5/1/72 PER REV.	5/1/72	W. J. SPARK
102	REVISION 6/1/72 PER REV.	6/1/72	W. J. SPARK
103	REVISION 7/1/72 PER REV.	7/1/72	W. J. SPARK
104	REVISION 8/1/72 PER REV.	8/1/72	W. J. SPARK
105	REVISION 9/1/72 PER REV.	9/1/72	W. J. SPARK
106	REVISION 10/1/72 PER REV.	10/1/72	W. J. SPARK
107	REVISION 11/1/72 PER REV.	11/1/72	W. J. SPARK
108	REVISION 12/1/72 PER REV.	12/1/72	W. J. SPARK
109	REVISION 1/1/73 PER REV.	1/1/73	W. J. SPARK
110	REVISION 2/1/73 PER REV.	2/1/73	W. J. SPARK
111	REVISION 3/1/73 PER REV.	3/1/73	W. J. SPARK
112	REVISION 4/1/73 PER REV.	4/1/73	W. J. SPARK
113	REVISION 5/1/73 PER REV.	5/1/73	W. J. SPARK
114	REVISION 6/1/73 PER REV.	6/1/73	W. J. SPARK
115	REVISION 7/1/73 PER REV.	7/1/73	W. J. SPARK
116	REVISION 8/1/73 PER REV.	8/1/73	W. J. SPARK
117	REVISION 9/1/73 PER REV.	9/1/73	W. J. SPARK
118	REVISION 10/1/73 PER REV.	10/1/73	W. J. SPARK
119	REVISION 11/1/73 PER REV.	11/1/73	W. J. SPARK
120	REVISION 12/1/73 PER REV.	12/1/73	W. J. SPARK
121	REVISION 1/1/74 PER REV.	1/1/74	W. J. SPARK
122	REVISION 2/1/74 PER REV.	2/1/74	W. J. SPARK
123	REVISION 3/1/74 PER REV.	3/1/74	W. J. SPARK
124	REVISION 4/1/74 PER REV.	4/1/74	W. J. SPARK
125	REVISION 5/1/74 PER REV.	5/1/74	W. J. SPARK
126	REVISION 6/1/74 PER REV.	6/1/74	W. J. SPARK
127	REVISION 7/1/74 PER REV.	7/1/74	W. J. SPARK
128	REVISION 8/1/74 PER REV.	8/1/74	W. J. SPARK
129	REVISION 9/1/74 PER REV.	9/1/74	W. J. SPARK
130	REVISION 10/1/74 PER REV.	10/1/74	W. J. SPARK
131	REVISION 11/1/74 PER REV.	11/1/74	W. J. SPARK
132	REVISION 12/1/74 PER REV.	12/1/74	W. J. SPARK
133	REVISION 1/1/75 PER REV.	1/1/75	W. J. SPARK
134	REVISION 2/1/75 PER REV.	2/1/75	W. J. SPARK
135	REVISION 3/1/75 PER REV.	3/1/75	W. J. SPARK