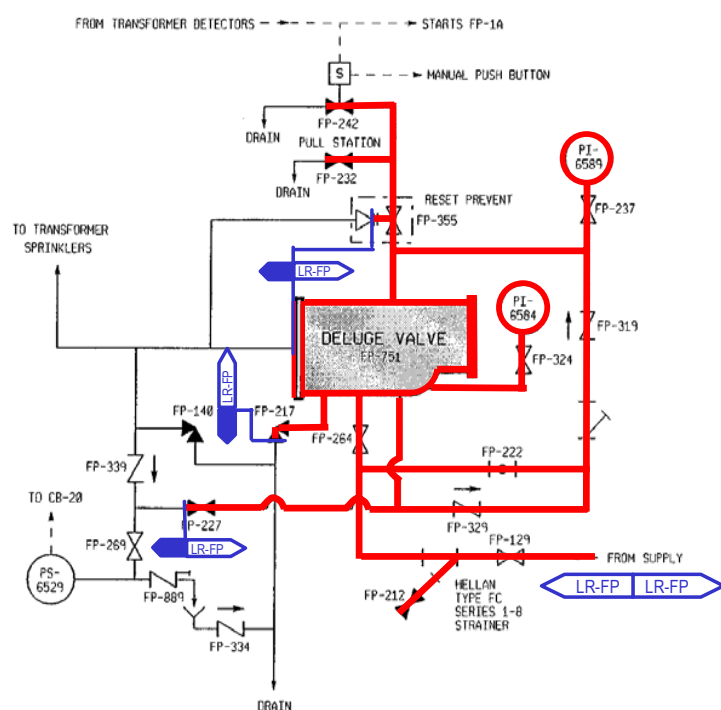
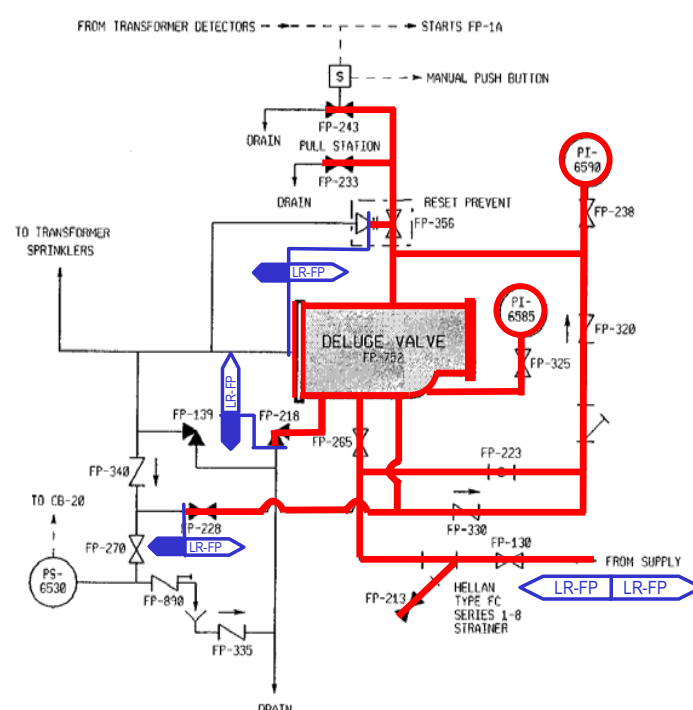


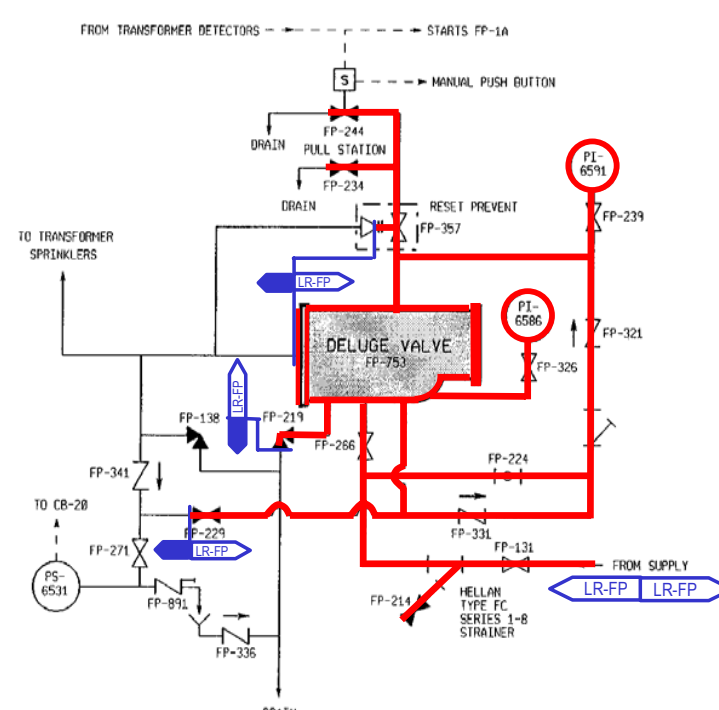
8 7 6 5 4 3 2 1



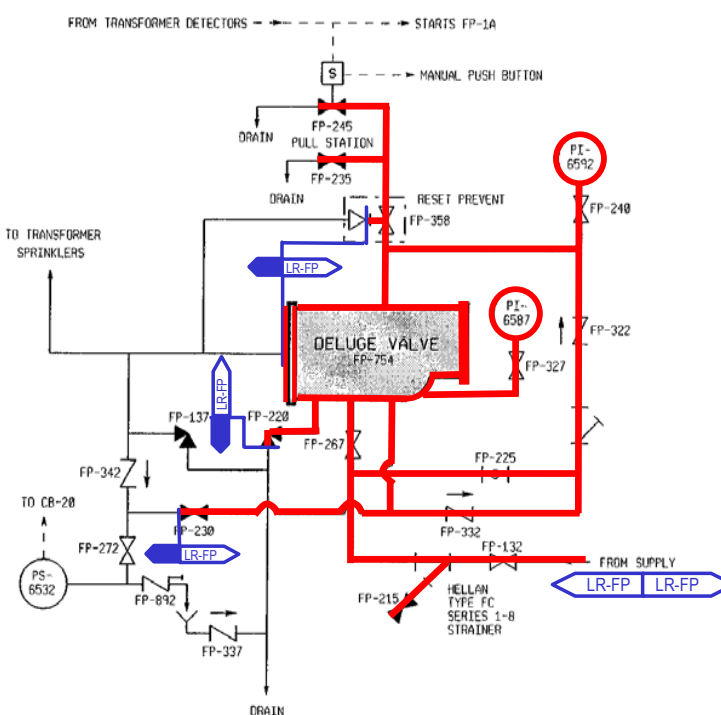
T1 TRANSFORMER DELUGE SYSTEM



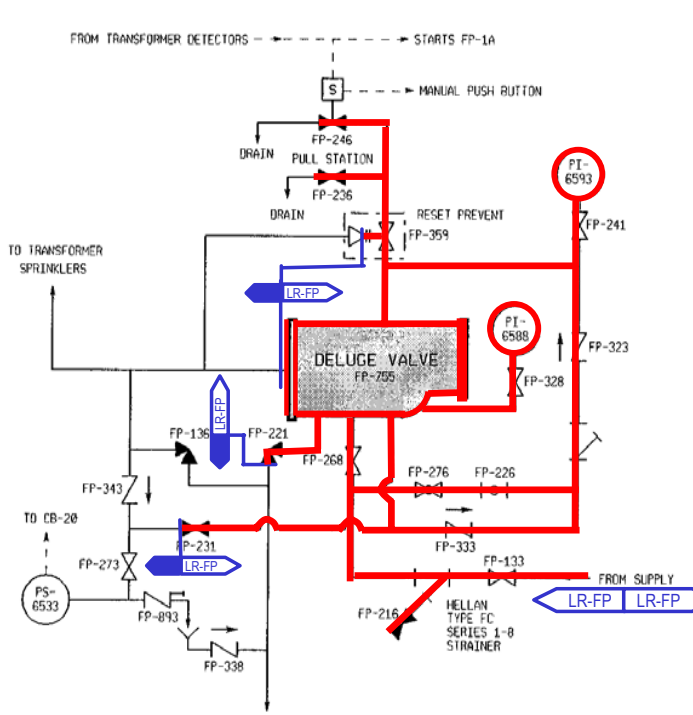
T1A-1 TRANSFORMER DELUGE SYSTEM



T1A-2 TRANSFORMER DELUGE SYSTEM



T1A-3 TRANSFORMER DELUGE SYSTEM



T1A-4 TRANSFORMER DELUGE SYSTEM

- PORTIONS OF SYSTEM WITHIN LICENSE RENEWAL SCOPE ARE BOUNDED BY LR FLAGS.
- UNLESS OTHERWISE INDICATED, VENTS, DRAINS AND TEST CONNECTIONS THAT ARE WITHIN LICENSE RENEWAL BOUNDARIES ARE INCLUDED IN LR SCOPE TO THE DISCHARGE OF THE VALVE.
- ALL INSTRUMENTATION LINES NORMALLY OPEN TO THE PROCESS SYSTEM, THROUGH AND INCLUDING THE INSTRUMENT, ARE INCLUDED IN LR SCOPE.
- IN GENERAL, LR FLAGS ARE NOT SHOWN FOR VENTS, DRAINS, TEST CONNECTIONS OR INSTRUMENT LINES EXCEPT FOR CONTAINMENT PENETRATIONS.
- THE LICENSE RENEWAL BOUNDARY INCLUDES THE PIPING AND SUPPORTS UP TO THE FIRST SEISMIC SUPPORT PAST THE BLUE BOUNDARY FLAG.

FORT CALHOUN STATION		
EA-FC-00-095 DF 12/01		
FIRE PROTECTION		
DELUGE SYSTEM DETAILS		
P & ID		
DWG. 11405-M-266, SH. 8A	APVD	REV
REV. SH. -----	7/19/09	0
FILE 49069	PKadden	

FOR INFORMATION ONLY

NOTE: THIS PRINT IS TO BE USED FOR THE FCS LICENSE RENEWAL PROJECT ONLY.
IT MAY NOT REFLECT THE MOST CURRENT REVISION OF THIS DRAWING.

110A