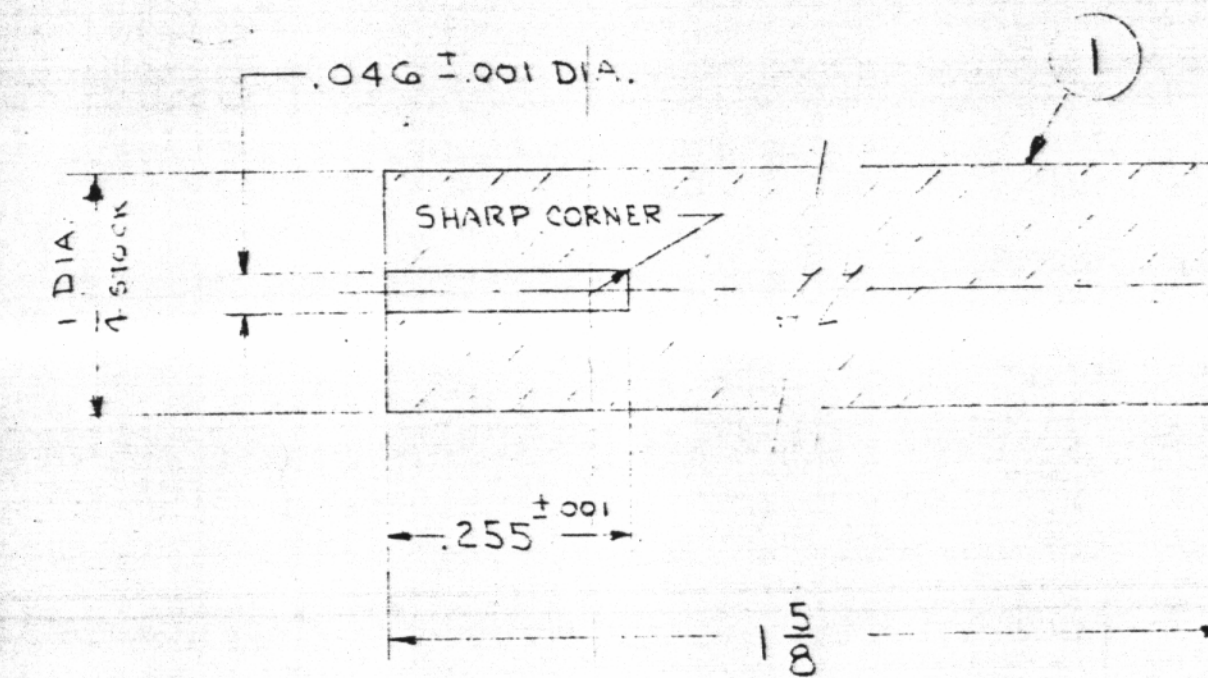
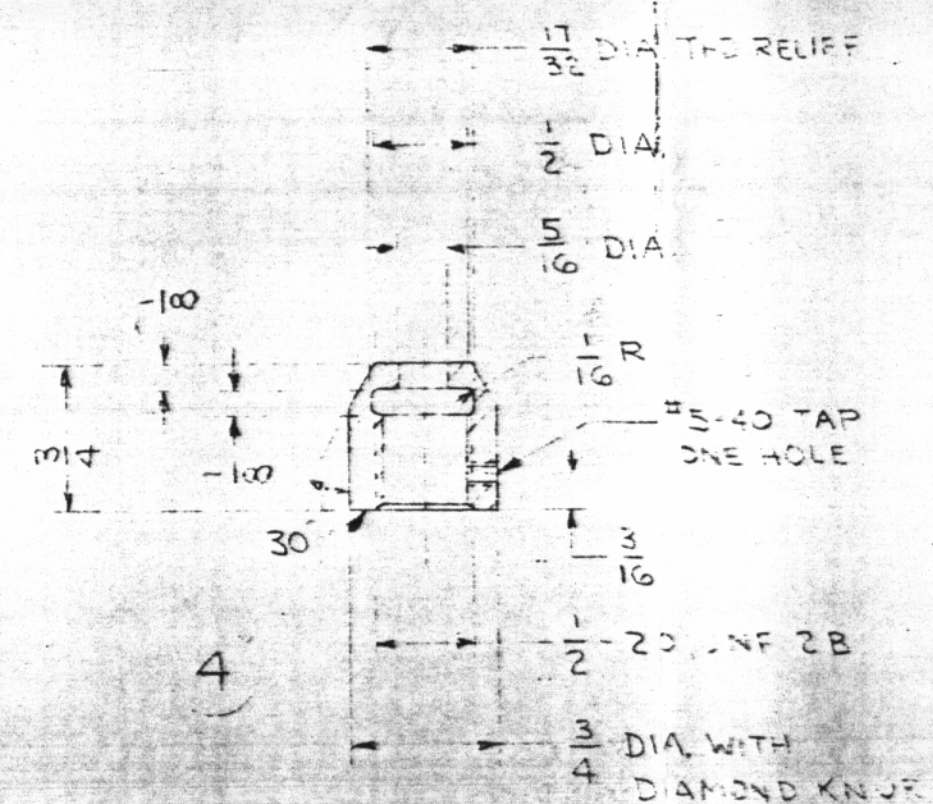
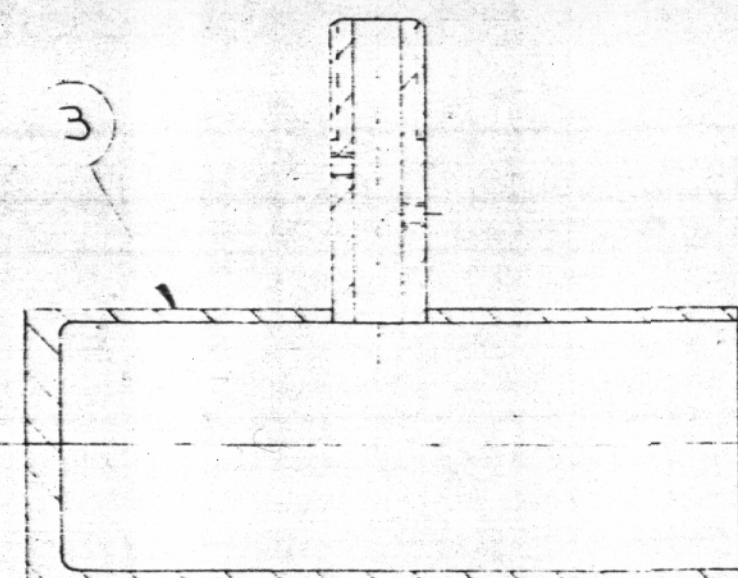


GROUP-2



CEMENT TO N
POSITION WITH
EASTMAN CEMENT

GROUP-1



C- VINYL COVERED PLASTIC INSULATED CABLE 12 CONDUCTORS OF
#22 STRANDED WIRES.

B-B O FR. MINN. MINNGE MFG. ST. PAUL MINN.

A-B O SEMI-ELEMENTS SANDHUR F.A.

10	SCINTILLATOR ASSY. GRITHSDW	
9	AMPHENOL AN MS. 1 PIN PLUG 24-20	
C	B CABLE 7 FT LONG	
8	TUBE SOCKET & CABLE CONNECTOR	TI-MIP-116 3-24
7	PHOTOMULTIPLIER TUBE	RCA IP21
5	SET SCR. #5-40 1/4 LONG	STEEL
4	ADJUSTING NUT	ALUMINUM
3	TUBE HOUSING GRIFED SK-307981-B	
B	2 SOURCE HOLDER PERED SK-308080-A	
A	1 PLASTIC SCINTILLATOR	

ASTROFUEL PLASTIC SYNTILLATOR											
SYM	ITEM	NOMENCLATURE OR DESCRIPTION			MATERIAL	REMARKS	GR	1	2	3	UNIT
LIST OF MATERIALS						SUB. 1					
GEOMETRIC SYMBOLS (SEE FIG. 10-											