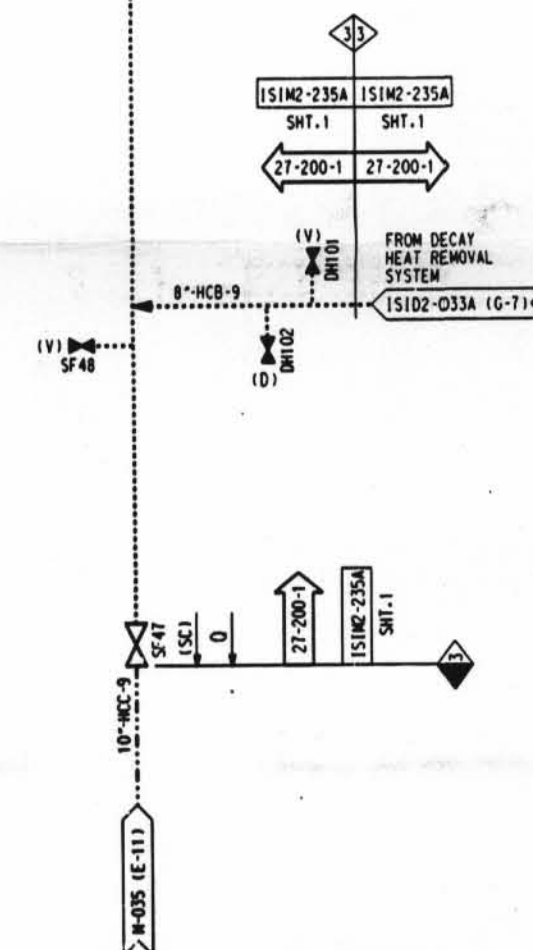


INFO. NOTE:
(REMOVE AT NEXT UPDATE)
REVISION CHANGE IN THE CLOUDED
AREA WAS FOR COLORIZING THE
SPENT FUEL POOL AS GREEN

- ISIM2- REFERENCE TO THE PIPING ISOMETRIC DRAWING FOR DETAILS ON THE PIPING CONFIGURATION, AND THE LOCATION AND IDENTIFICATION OF WELDS AND SUPPORTS.
- RESERVED FOR SPECIAL ISI REQUIREMENTS. (MAY BE) ACCOMPANIED BY SPECIFIC NOTES.
- REFERENCE TO THE ISI ITEM NUMBER DESIGNATION USED IN THE FIRST YEAR INSERVICE INSPECTION INTERVAL.
- ASME SECTION XI CLASS CHANGE
- ISI PROGRAM BOUNDARY

NOTES:

1. DELETED
2. FOR ISI BOUNDARY DIAGRAM INDEX SHEET AND GENERAL NOTES, SEE ISID2-001.
3. FOR PIPING SYMBOLS AND P & ID INDEX, SEE DRAWING M-001.
4. UNLESS OTHERWISE NOTED, ALL VENT CONNECTIONS ARE 1/4\"/>



D-26

1	INC DCN ISID2-35-4 PER DCR 01-1685	SBV	
2	INC DCN ISID2-35-2 PER DCR 00-1786	"INITIALS ON FILE"	
3	INC DCN ISID2-35-1 FOR DCR 91-0011	"INITIALS ON FILE"	
4	ISSUED FOR SECOND 10 YEAR ISI PROGRAM	"INITIALS ON FILE"	
DATE	REVISION	BY	CHK'D
DAVIS-BESSE NUCLEAR POWER STATION UNIT NO. 1			
INSERVICE INSPECTION DIAGRAM SPENT FUEL POOL COOLING SYSTEM			
ISID2-035		3	