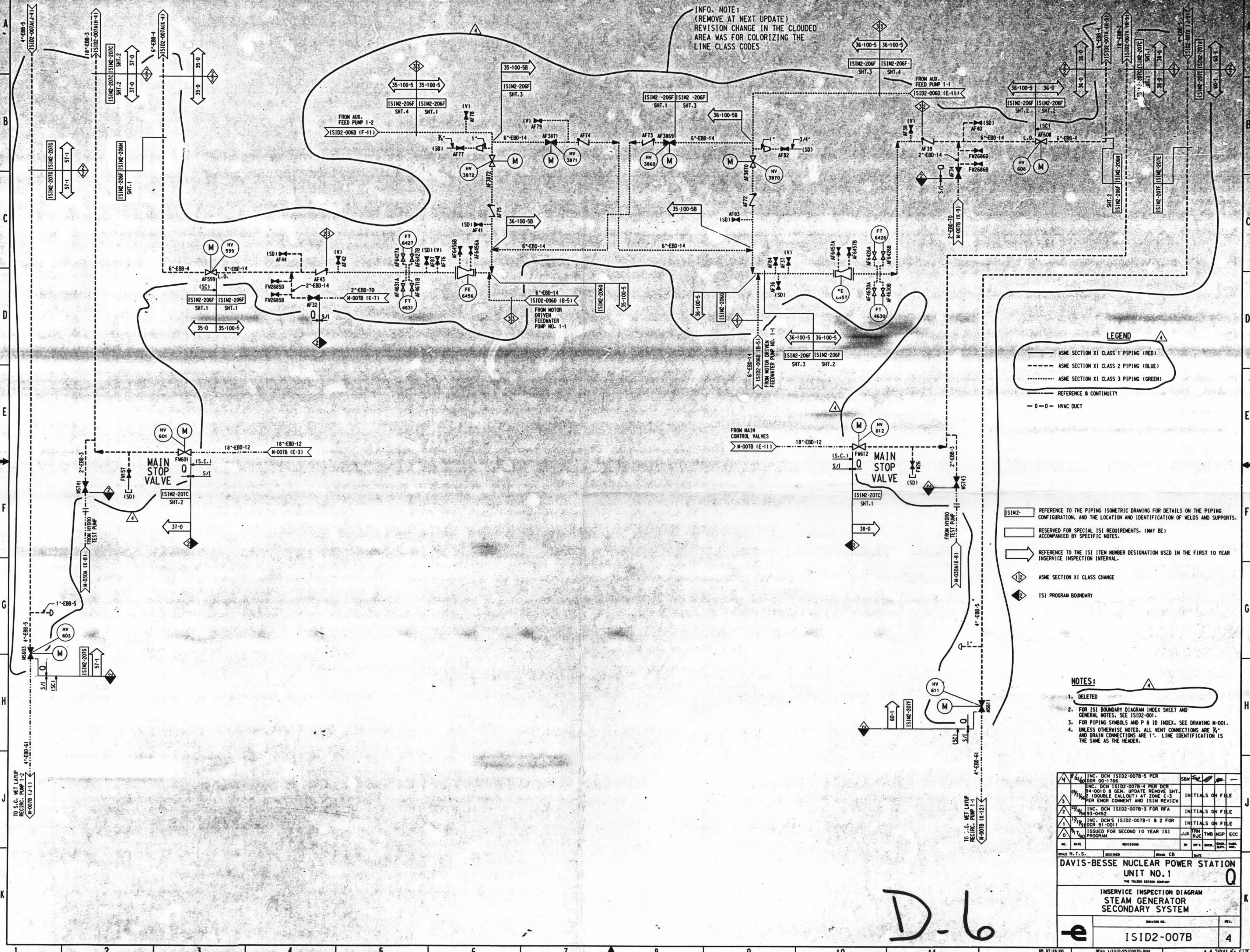


INFO. NOTE:
(REMOVE AT NEXT UPDATE)
REVISION CHANGE IN THE CLOUDED
AREA WAS FOR COLORIZING THE
LINE CLASS CODES



LEGEND

- ASME SECTION XI CLASS 1 PIPING (RED)
- ASME SECTION XI CLASS 2 PIPING (BLUE)
- ASME SECTION XI CLASS 3 PIPING (GREEN)
- REFERENCE & CONTINUITY
- D-D-HYAC DUCT

- ISIM2- REFERENCE TO THE PIPING ISOMETRIC DRAWING FOR DETAILS ON THE PIPING CONFIGURATION, AND THE LOCATION AND IDENTIFICATION OF WELDS AND SUPPORTS.
- RESERVED FOR SPECIAL ISI REQUIREMENTS. (MAY BE) ACCOMPANIED BY SPECIFIC NOTES.
- REFERENCE TO THE ISI ITEM NUMBER DESIGNATION USED IN THE FIRST 10 YEAR INSERVICE INSPECTION INTERVAL.
- ASME SECTION XI CLASS CHANGE
- ISI PROGRAM BOUNDARY

- NOTES:**
- DELETED
 - FOR ISI BOUNDARY DIAGRAM INDEX SHEET AND GENERAL NOTES, SEE ISID2-001.
 - FOR PIPING SYMBOLS AND P & ID INDEX, SEE DRAWING M-001.
 - UNLESS OTHERWISE NOTED, ALL VENT CONNECTIONS ARE 3/4" AND DRAIN CONNECTIONS ARE 1". LINE IDENTIFICATION IS THE SAME AS THE HEADER.

4	INC. DCN ISID2-007B-5 PER DCR 00-1766	SDW	
5	INC. DCN ISID2-007B-4 PER DCR 04-0010 & GEN. UPDATE REMOVE SHT. 2 (DOUBLE CALLOUT) AT ZONE C-3 PER ENGR COMMENT AND ISIM REVIEW		INITIALS ON FILE
6	INC. DCN ISID2-007B-3 FOR RFA 93-0482		INITIALS ON FILE
7	INC. DCN'S ISID2-007B-1 & 2 FOR DCR 91-001		INITIALS ON FILE
8	ISSUED FOR SECOND 10 YEAR ISI PROGRAM	JJK	FIN TMB MCP ECC
NO.	DATE	REVISIONS	BY
SCALE N.T.S. DESIGNED: [] DRAWN: CB DATE: []			
DAVIS-BESSE NUCLEAR POWER STATION UNIT NO. 1			
INSERVICE INSPECTION DIAGRAM STEAM GENERATOR SECONDARY SYSTEM			
DRAWING NO. ISID2-007B		REV. 4	

D-6