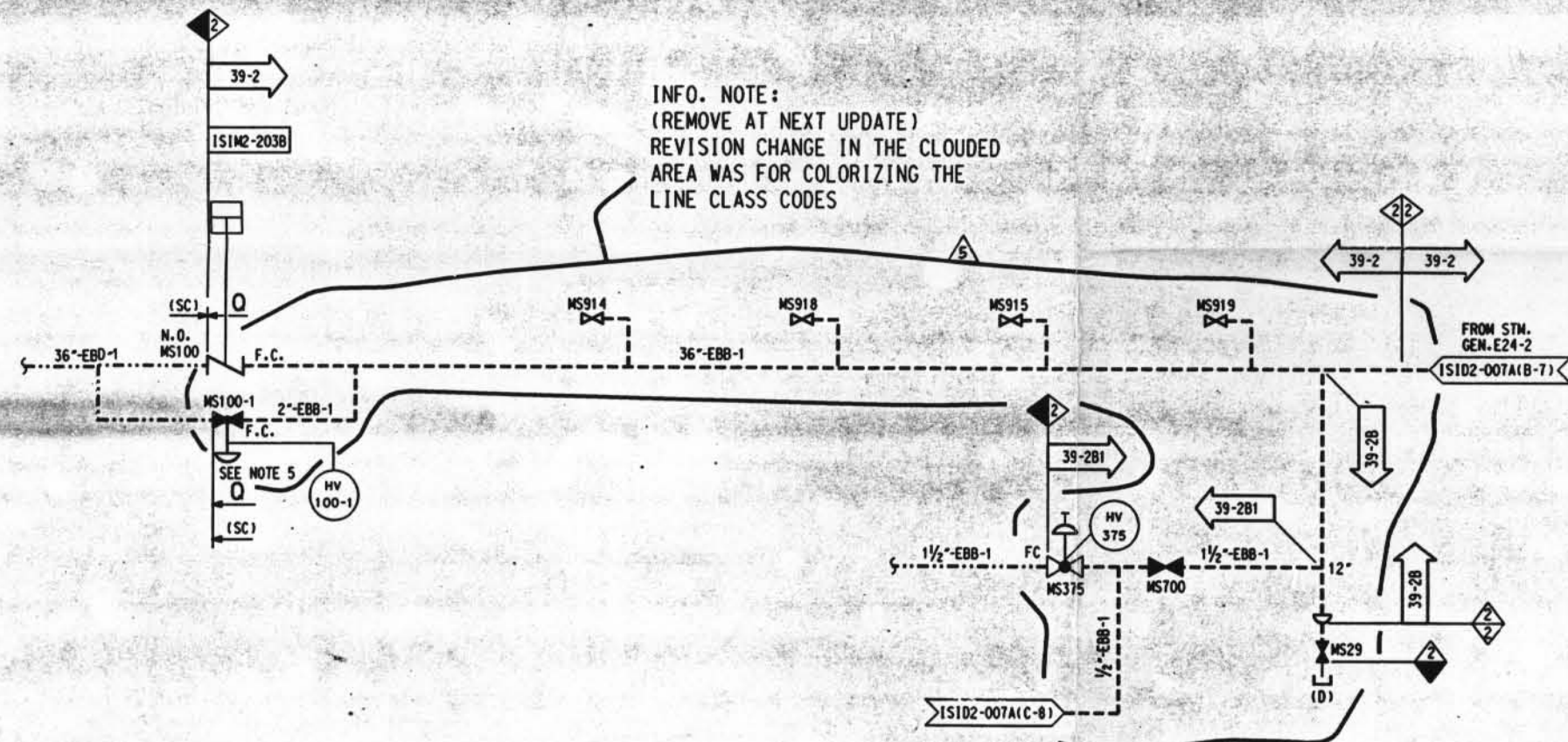


- REFERENCE TO THE PIPING ISOMETRIC DRAWING FOR DETAILS ON THE PIPING CONFIGURATION, AND THE LOCATION AND IDENTIFICATION OF WELDS AND SUPPORTS.
- RESERVED FOR SPECIAL ISI REQUIREMENTS. (MAY BE ACCOMPANIED BY SPECIFIC NOTES.)
- REFERENCE TO THE ISI ITEM NUMBER DESIGNATION USED IN THE FIRST 10 YEAR INSERVICE INSPECTION INTERVAL.
- ASME SECTION XI CLASS CHANGE
- ISI PROGRAM BOUNDARY

- NOTES:
- DELETED
 - FOR ISI BOUNDARY DIAGRAM INDEX SHEET AND GENERAL NOTES, SEE IS102-001.
 - FOR PIPING SYMBOLS AND P & ID INDEX, SEE DRAWING N-001.
 - UNLESS OTHERWISE NOTED, ALL VENT CONNECTIONS ARE 3/4" AND DRAIN CONNECTIONS ARE 1". LINE IDENTIFICATION IS THE SAME AS THE HEADER.
 - VALVE NS101-1 WAS FORMERLY NUMBERED AS NS101A. VALVE NS100-1 WAS FORMERLY NUMBERED AS NS100A.



INC. DCH IS102-003A-6 PER DCH 00-1766	SDW	INTIALS ON FILE
INC. DCH'S IS102-003A-4 AND 5 PER MOD 92-0008 SUP. 00	INTIALS ON FILE	
INC. DCH IS102-003A-3 FOR DCH 94-0030	INTIALS ON FILE	
INC. DCH IS102-003A-2 FOR DCH 93-0068	INTIALS ON FILE	
INC. DCH IS102-003A-1 FOR DCH 91-0011	INTIALS ON FILE	
ISSUED FOR SECOND 10 YEAR ISI PROGRAM	CB	WTF JDE MOP ECC
DATE	REVISION	BY
DATE	DESIGNED	DATE
DATE	DESIGNED	DATE
DAVIS-BESSE NUCLEAR POWER STATION UNIT NO. 1		
INSERVICE INSPECTION DIAGRAM MAIN STEAM AND REHEAT SYSTEM SHEET 1		
DRAWING NO.	REV.	
IS102-003A	5	

D-2

I CERTIFY THAT THE NAME CONTAINED ON THIS FRAME WAS MADE IN THE NORMAL AND ORDINARY COURSE OF BUSINESS FOR THE STATE OF ILLINOIS AND THAT I AM AN ACCURATE AND PRESENTLY VALID AND IN GOOD STANDING RECORDS MANAGEMENT DAVIS-BESSE NUCLEAR POWER STATION

30X

14 3044 E- SIZE