

50-277/278

From: Faye L. Stocum <fstocum@state.de.us>
To: <Peach_Bottom_EIS@nrc.gov>
Date: Fri, Oct 26, 2001 9:52 AM
Subject: NRC: Keeney Transmission Line Photos

Duke-

I want to send along photos of the area where the Keeney Transmission line bisected the National Register eligible C & D Feeder Canal. Some of the photos were taken this summer while others were taken when we visited the project area on Oct. 15th. Since I can only attach 7 photographs at a time and I have a total of 15 photos, there will be a total of three (3) transmissions of 6-6-3.

Once you receive them, if you have any questions regarding what you're viewing, please let me know.

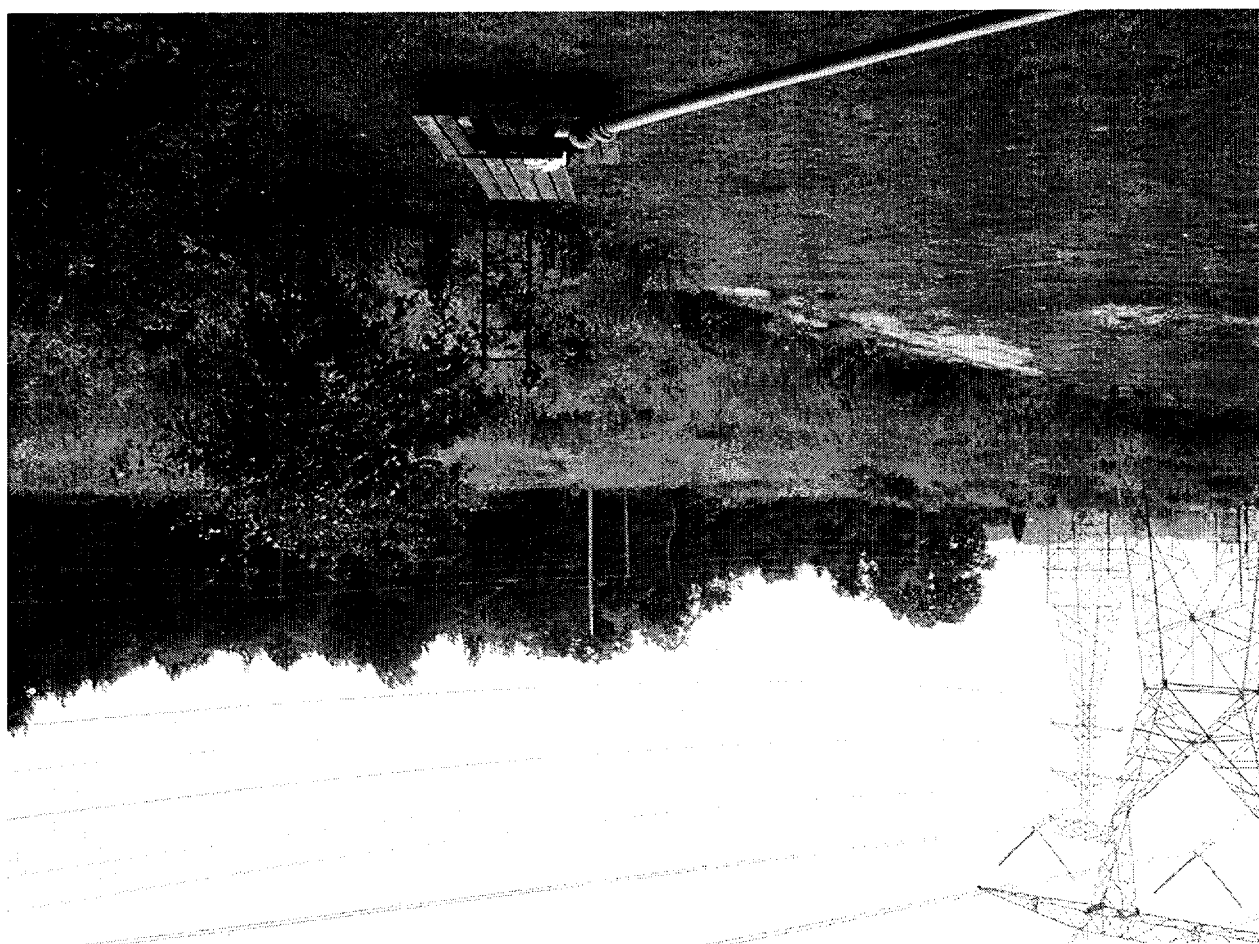
Here is a run down of the photo descriptions: (North Side = north of transmission line corridor; South Side= south of transmission line corridor. I consider the transmission line running east-west.)

- #1: North Side: looking north of the concrete bridge
- #2: North Side: looking south from the rear deck of Casapulla residence
- #3: South Side: looking north towards cleared transmission line; toe path to left; canal center-right
- #4: North Side: looking south from the concrete bridge
- #5: North Side: looking south from the concrete bridge
- #6: North Side: looking northerly-back borrow area and edge of canal; note poorly drained environment contrasted against well drained environment of south side.
- #7: Transmission Line: old maintenance road crossing feeder canal along south side of transmission line; now used by dirt bikes and ATVs. (Fall) Note Erosion problem.
- #8: Transmission Line: old maintenance road crossing feeder canal along south side of transmission line; now used by dirt bikes and ATVs. (Spring) Note Erosion problem.
- #9: Transmission Line: looking north from center of feeder canal where dirt bikes transgress on south side of transmission line. Note how canal is choked with vegetation.
- #10: Transmission Line: looking north from center of feeder canal where current maintenance access road crosses canal. Note how canal is choked with vegetation. (Spring)
- #11: Transmission Line: looking north from center of feeder canal where current maintenance access road crosses canal. Note how canal is choked with vegetation. (Fall)
- #12: Transmission Line: looking north from southern edge of transmission line. (Fall)
- #13: Transmission Line: looking north from southerly side of transmission line. (Spring)
- #14: Transmission Line: looking easterly along current access maintenance road. Note this is area of former bridge crossing.
- #15: South Side: looking north from inside woods. Note the back borrow area in center and toe path to the right. Canal to the right of toe path.

A001

1/23/02

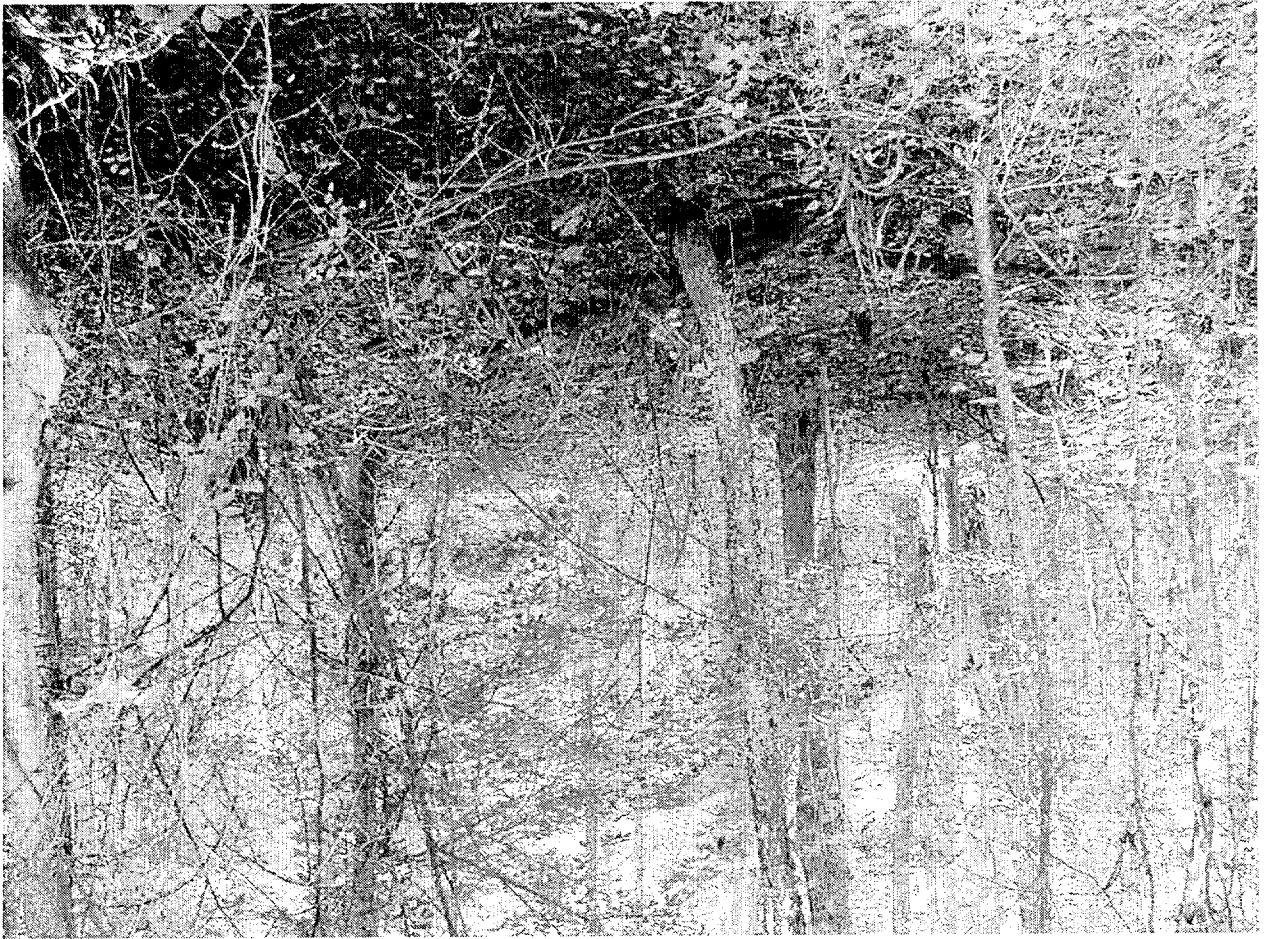










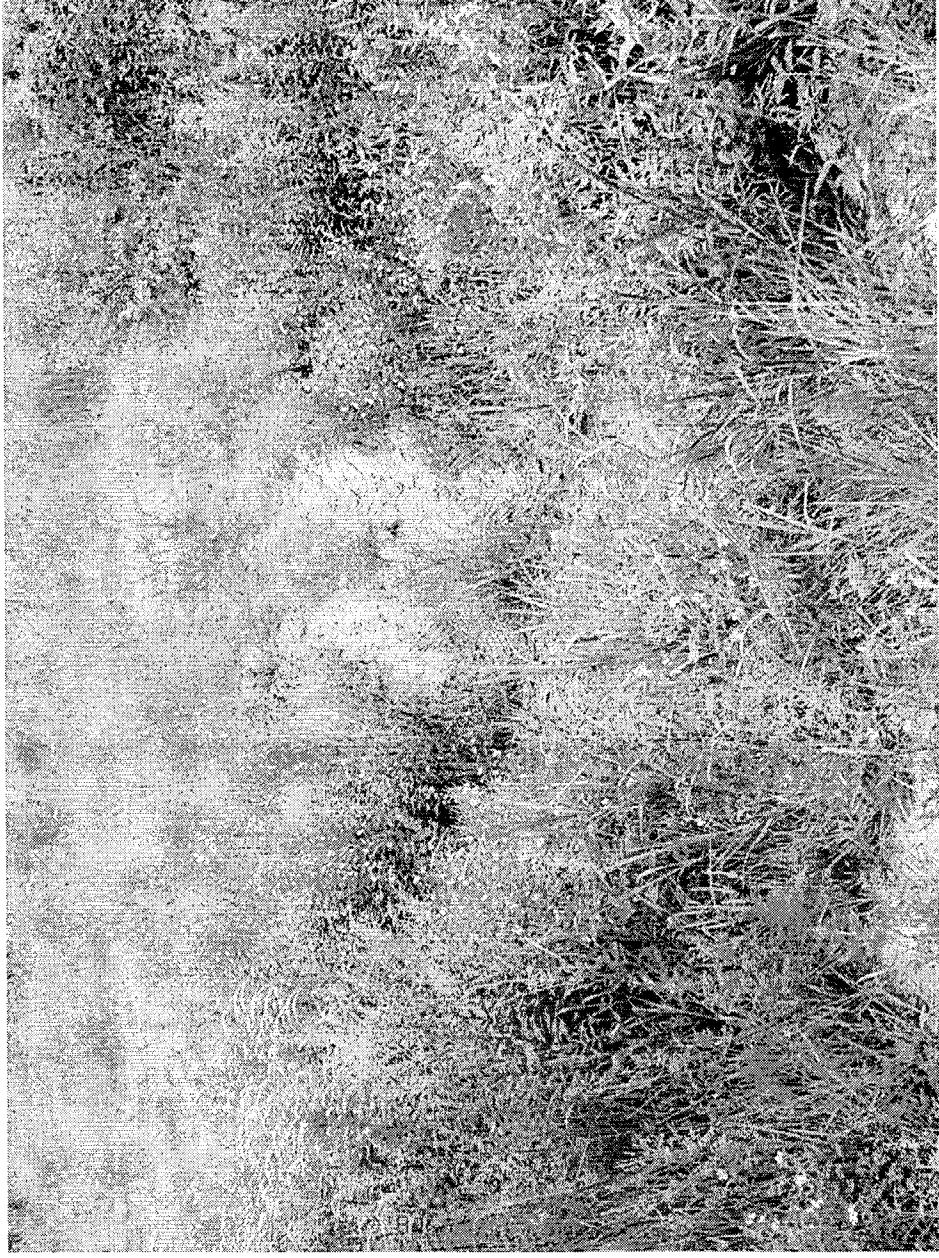


From: Faye L. Stocum <fstocum@state.de.us>
To: <Peach_Bottom_EIS@nrc.gov>
Date: Fri, Oct 26, 2001 9:52 AM
Subject: NRC: Keeney Transmission Line- 2nd set of photos (6)

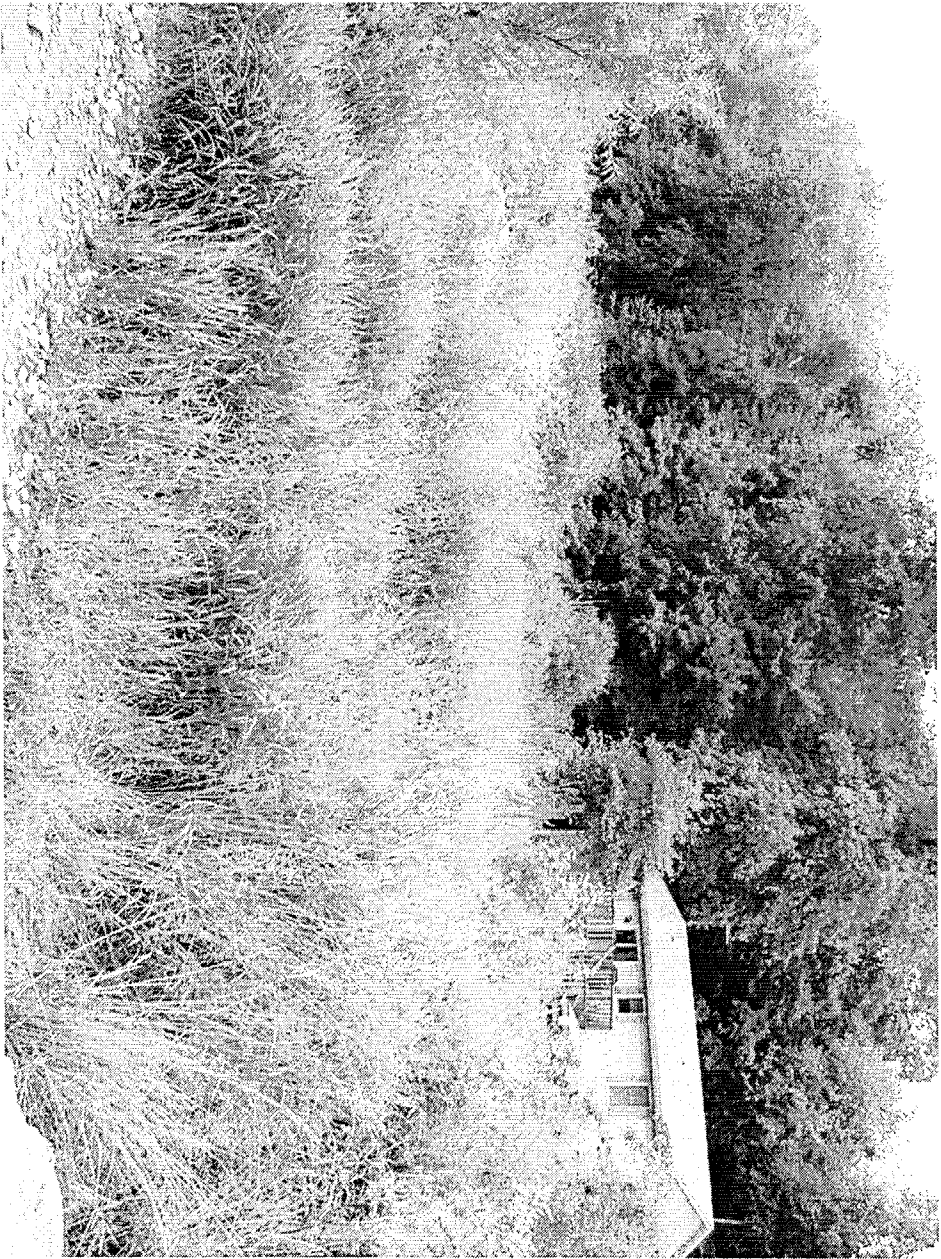
Duke-

Here is the 2nd set of photos.

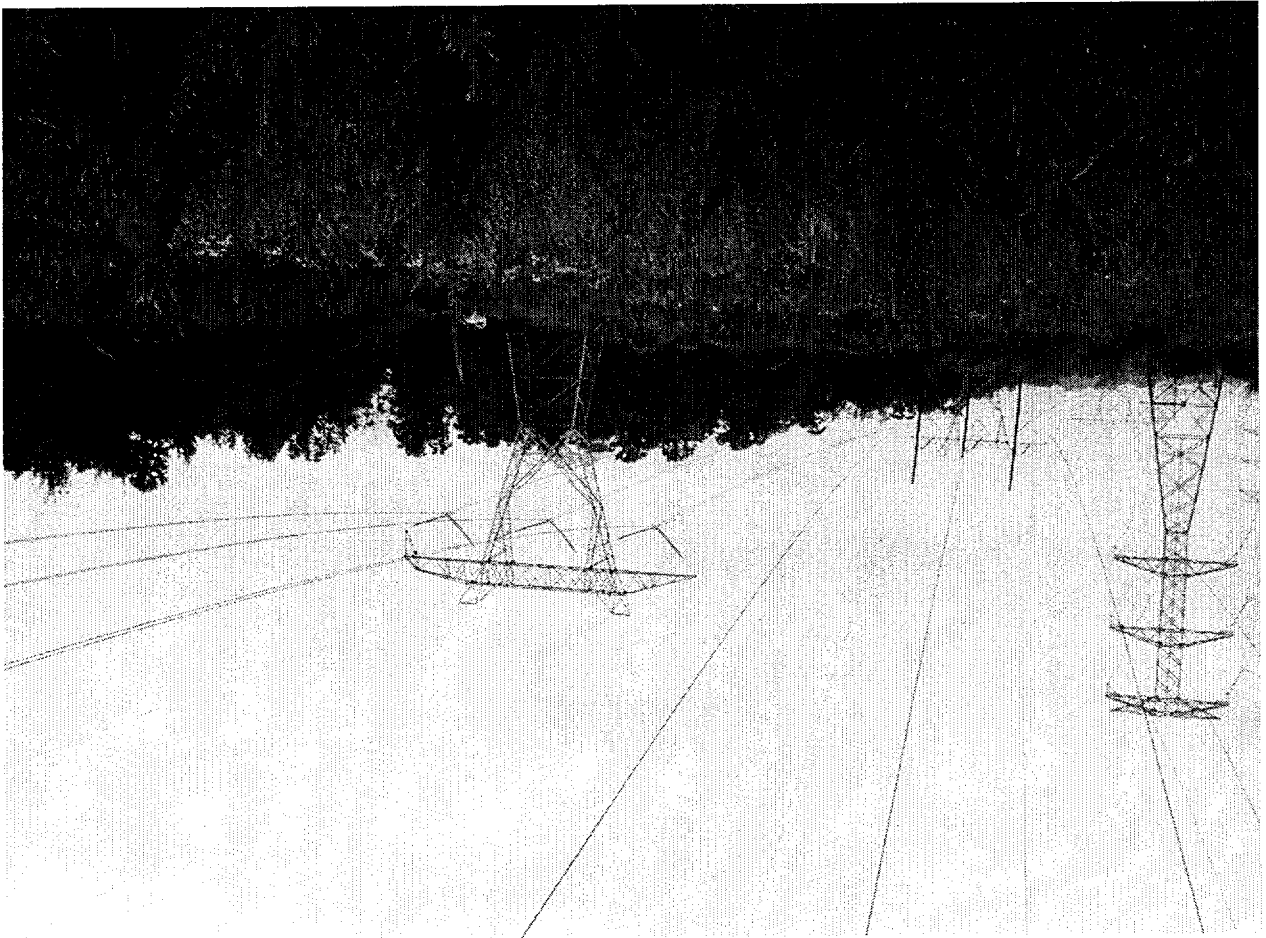












From: Faye L. Stocum <fstocum@state.de.us>
To: <Peach_Bottom_EIS@nrc.gov>
Date: Fri, Oct 26, 2001 10:10 AM
Subject: NRC: Keeney Transmission Line- 3rd set of photos (3)

Duke-

Here are the last three photos.

Faye





