

4/00
9-4

Comparison of tube scans before and after pressure testing

Scans were made on the three leaking tubes in Steam Generator 24 after the pressure tests. These scans revealed a considerable change in the eddy-current response. Of most interest is the scan

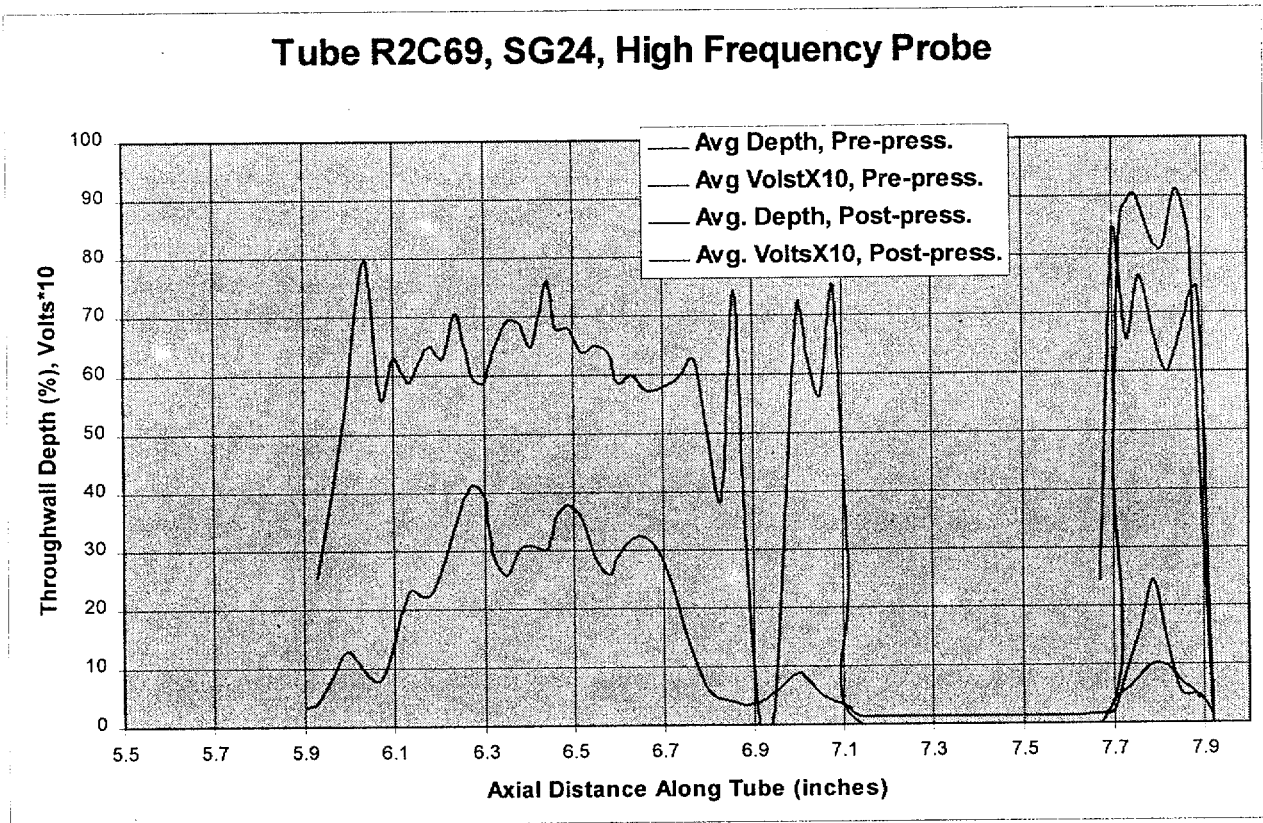


Figure 1 Profile of tube R2C69 of steam generator 24 showing the effects of pressure testing.

of 2-69. In Figure 1 we show the pre-pressure test scan of this tube, with the post-pressure test of the tube superimposed. The region on the left has only the pre-pressure test scan, since the probe would not run through the tube after the test. The

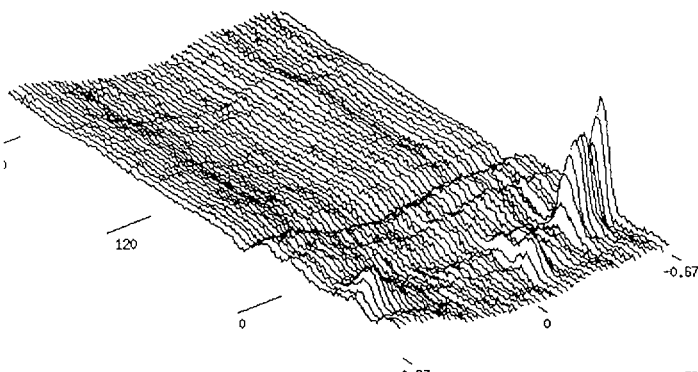


Figure 2 Pre-scan of R2C69 of SG 24

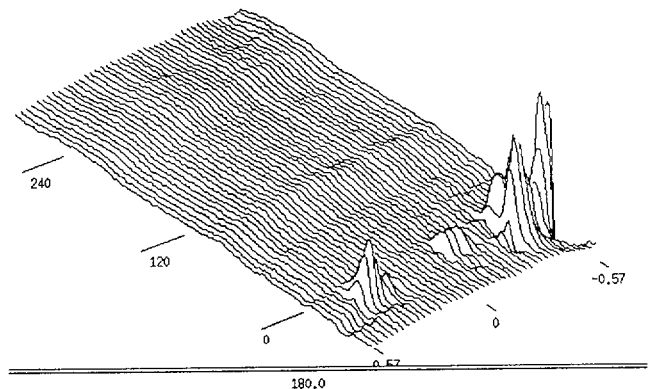


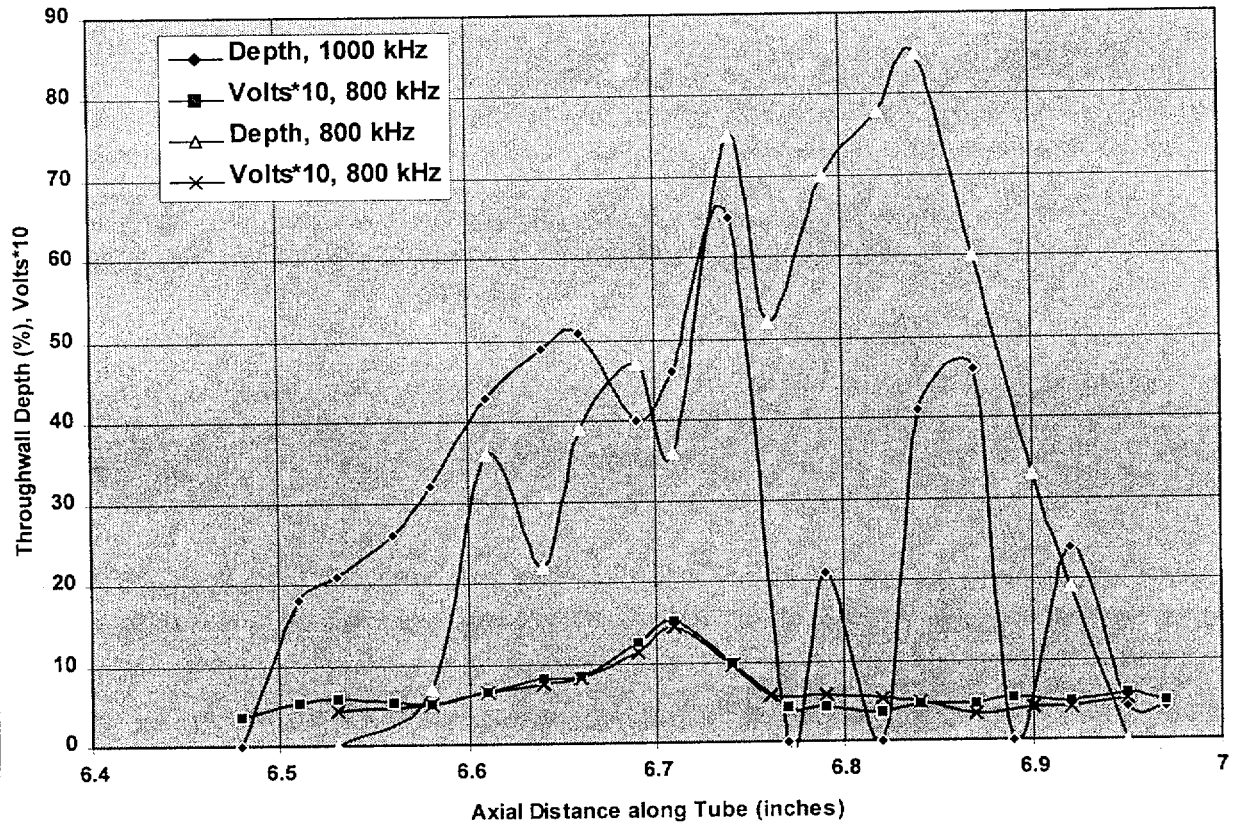
Figure 3 Post-scan of R2C69 of SG24

amplitude of the scan is large enough to be more accurately measured. Figure 2 has the pre-scan graphics and Figure 3 has the post-scan graphics.

J/159

The defect on the left was not included in the profile of this tube, but it was reported on the data sheets.

Tube R2C74, SG24, High Frequency Probe



Tube R2C71, SG24, High Frequency Probe

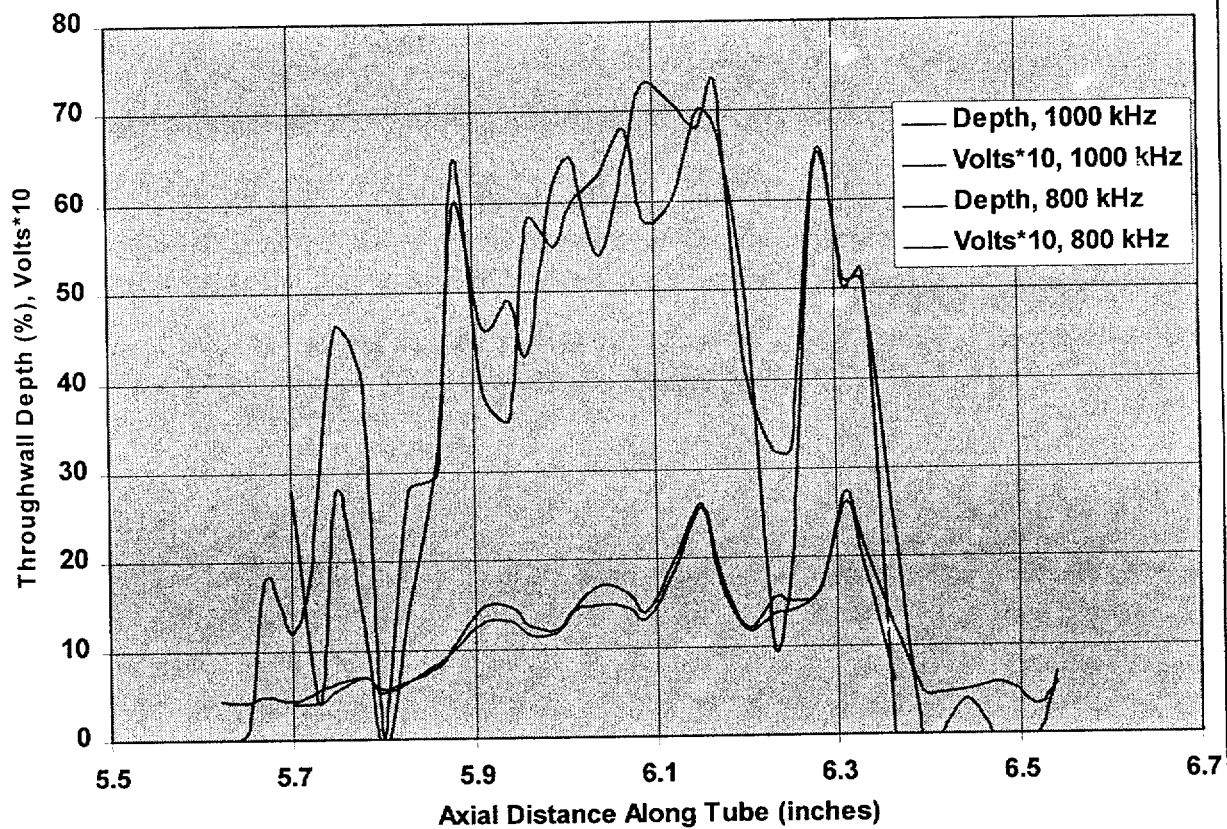


Figure 5 Profile of the defect in tube R2C71 in steam generator 24 as measured with the high-frequency plus-point at 1000 kHz and 800 kHz.