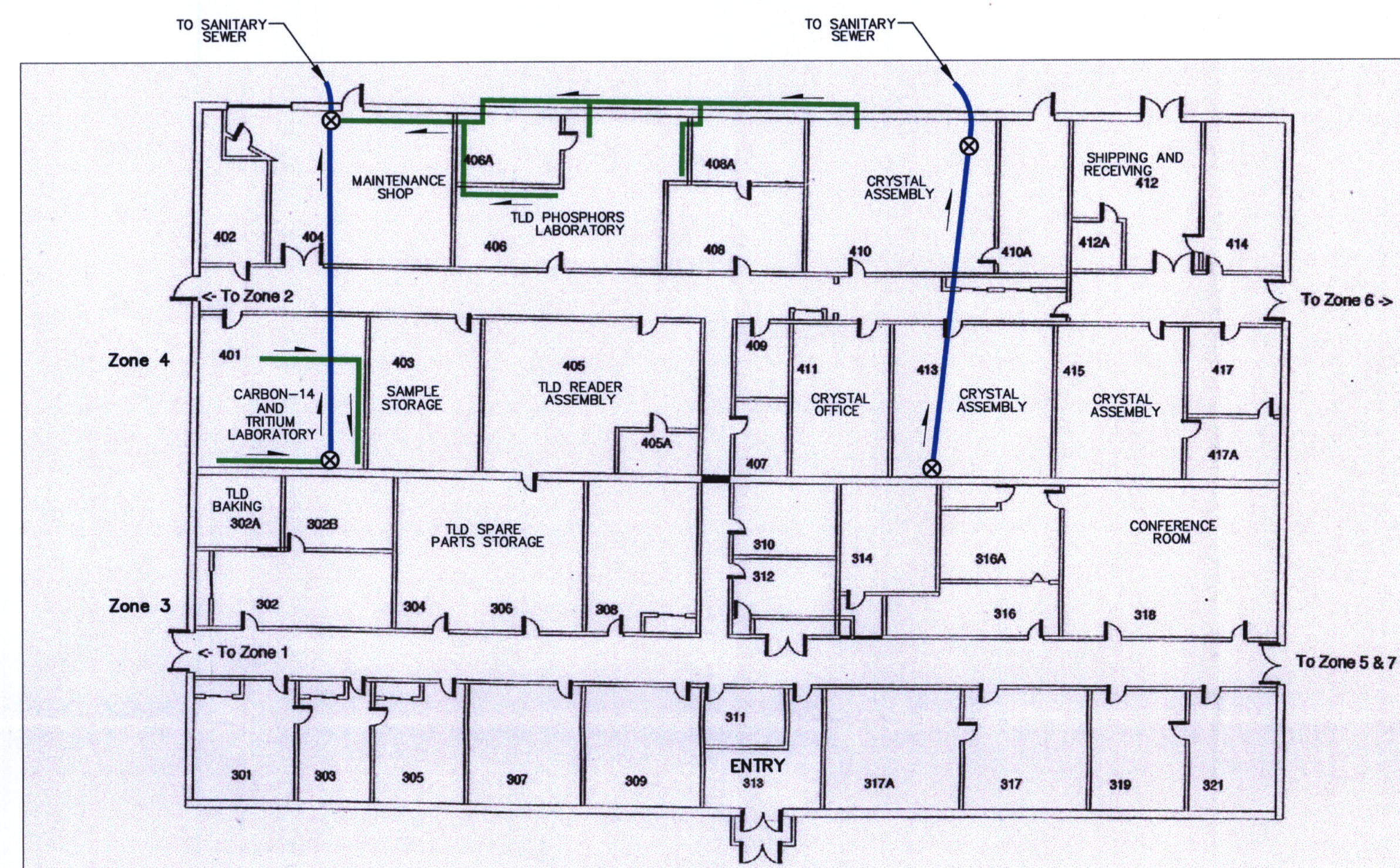
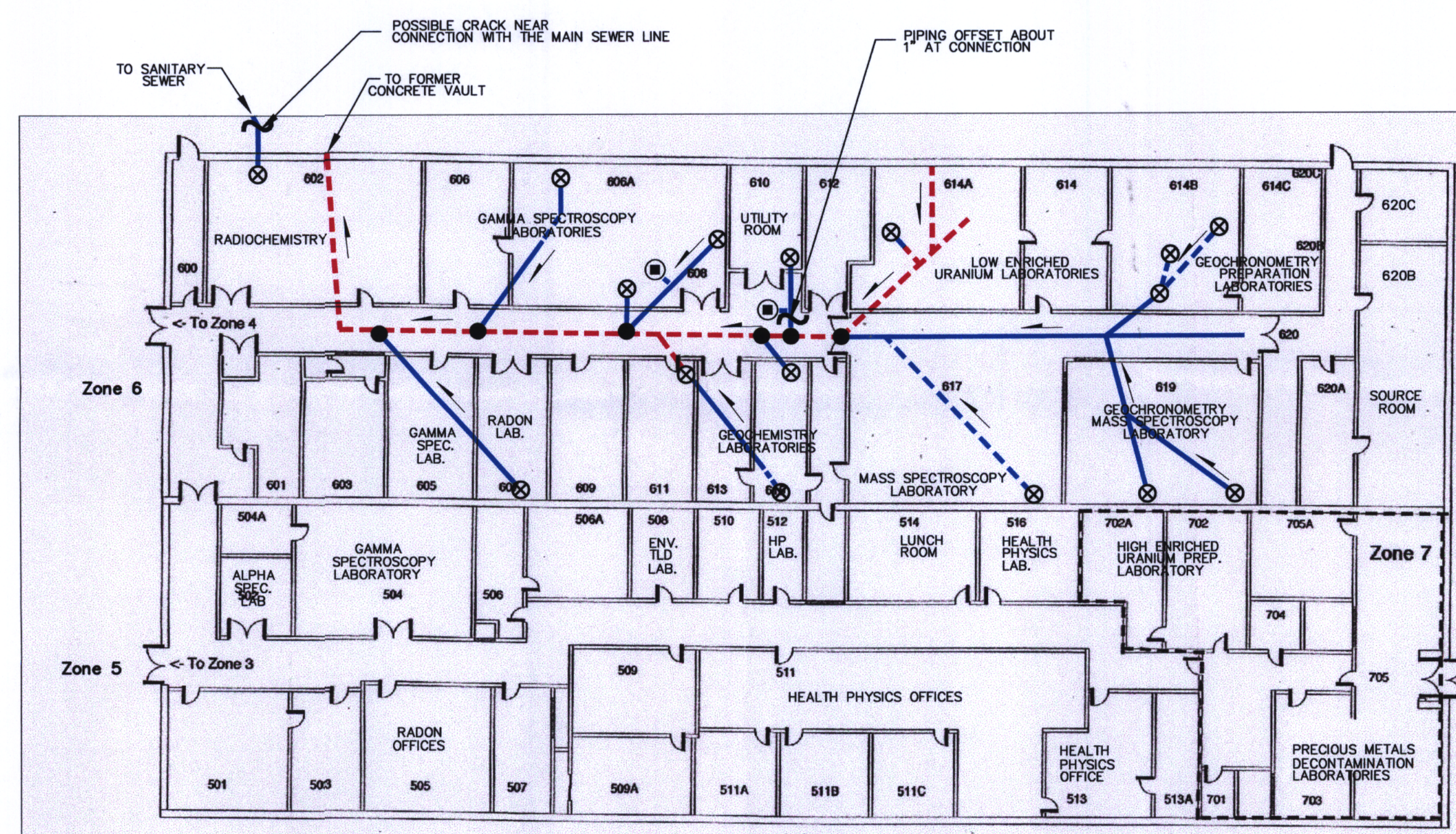


ZONES 1 AND 2



ZONES 3 AND 4



ZONES 5, 6, AND 7

LEGEND

- FLOOR DRAIN
- ⊗ LOCATION OF DISCHARGE TO UNDERGROUND COLLECTION SYSTEM FROM ABOVEGROUND COLLECTION SYSTEM
- EXPOSED UNDERGROUND PIPE IN EXCAVATION TRENCH USED AS ACCESS FOR VIDEO TAPING THE UNDERGROUND COLLECTION SYSTEM
- EXCAVATION TRENCH FROM REMOVED UNDERGROUND PIPING
- UNDERGROUND COLLECTION SYSTEM VIDEO INSPECTED AND LOCATED
- APPROXIMATE LOCATION OF UNDERGROUND COLLECTION SYSTEM UNABLE TO BE VIDEO INSPECTED DUE TO OBSTRUCTION
- ABOVEGROUND PROCESS-LINE COLLECTION SYSTEM (PVC)
- FLOW DIRECTION OF COLLECTION SYSTEM

APPROXIMATE SCALE - FEET
0 15 30 45

REVISION	DATE	DESCRIPTION
----------	------	-------------

FIGURE 6
LAYOUT OF WASTEWATER
COLLECTION SYSTEM
TELEDYNE BROWN ENGINEERING FACILITY
WESTWOOD, NEW JERSEY

PREPARED FOR
TELEDYNE BROWN ENGINEERING
HUNTSVILLE, ALABAMA

APPROVED *[Signature]*
CHECKED *[Signature]*
DRAWN *[Signature]*
DRAWING NUMBER
5892401

Earth Sciences Consultants, Inc.

DOO1