

LEGEND

- ASME SECTION XI CLASS 1 PIPING
- ASME SECTION XI CLASS 2 PIPING
- ASME SECTION XI CLASS 3 PIPING
- NON-151 NUCLEAR CLASS AND HSC CLASS
- PRESSURE BOUNDARY EXTENSION
- REFERENCE BOUNDARY EXTENSION
- HYAC DUCT
- ANCHOR
- CONSTANT SPRING HANGER
- VARIABLE SPRING HANGER
- HYDRAULIC SNUBBER
- MECHANICAL SNUBBER
- NON-WELDED SUPPORT ATTACHMENT
- WELDED INTEGRAL SUPPORT ATTACHMENT
- RIGID SUPPORT
- SWAY STRUT
- SHOP WELD
- FIELD WELD
- LONGITUDINAL WELD
- WELD JOINT
- 151 ITEM NUMBER DESIGNATION USED IN THE FIRST 10 YEAR INSERVICE INSPECTION INTERVAL

NOTES:

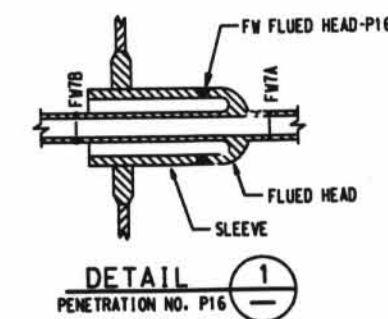
- MULTIPLE SWAY STRUTS, SPRING SUPPORTS OR SNUBBERS IN A SINGLE PIPING SUPPORT ARE SHOWN BY A NUMBER BEFORE THE SUPPORT TYPE. (EXAMPLE: 2NWS - TWO HYDRAULIC TYPE SNUBBERS THAT ARE NOT WELDED INTEGRAL TO THE PIPE).
- THE REACTOR COOLANT DRAIN LINE 3"-HCB-33 WELDS AND SUPPORTS ARE EXEMPT FROM INSERVICE EXAMINATION REQUIREMENTS PER 10 CFR 50.61. THE WELDS AND SUPPORTS SHOWN MAY NOT REPRESENT THE ACTUAL AS-BUILT CONDITION.
- PIPING SYSTEMS ON THIS DRAWING WHICH ARE OUTSIDE OF THE 151 BOUNDARY, ARE SHOWN FOR REFERENCE AND CONTINUITY PURPOSES ONLY. THE CONFIGURATION SHOWN MAY NOT REPRESENT THE ACTUAL AS-BUILT CONDITION.

GENERAL NOTE

DIMENSIONS SHOWN ON THIS DRAWING ARE TO BE USED FOR APPROXIMATE LOCATION ONLY. USE DESIGN DRAWINGS FOR DIMENSIONAL VERIFICATION.

REFERENCE DRAWINGS:

15102-040A REACTOR COOLANT SYSTEM DETAILS



NO.	DATE	BY	CHKD	APP'D	REV.
1	10/1/80	CB	CB	CB	1
DAVIS-BESSE NUCLEAR POWER STATION UNIT NO. 1 INSERVICE INSPECTION ISOMETRIC REACTOR COOLANT SYSTEM DETAILS CTMT. BLDG.					
151M2-240D					

D-131